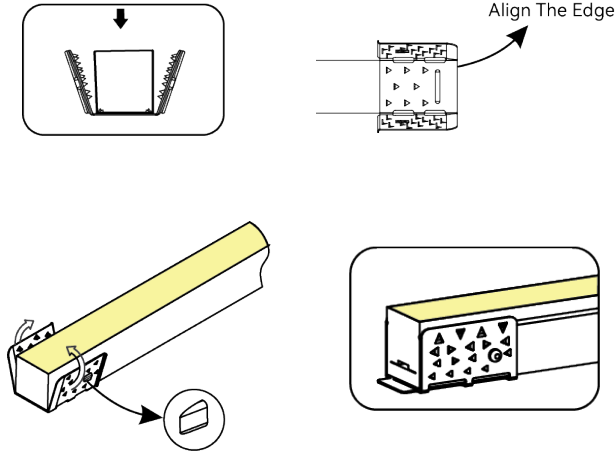


DIY CLICK CONNECTOR

Installation: End Exit

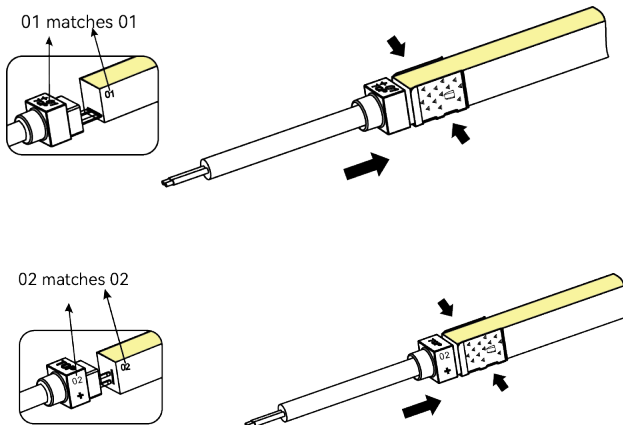
STEP 1:

Wrap the fixture tightly by anti-skidding clip.



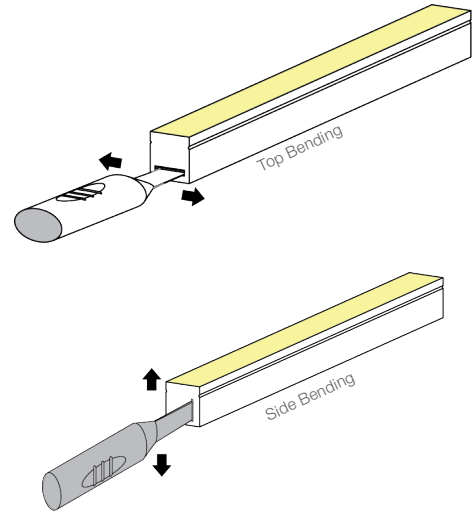
STEP 3:

For both top and side bending fixtures, insert the pins of the feed connector into the space created by the inducer at the back of the PCB and push them to the end.



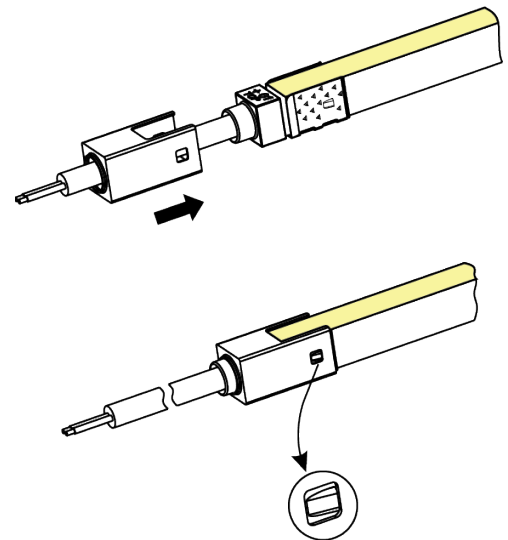
STEP 2:

For top bending fixtures, insert the inducer into the back of the PCB and slide it left and right. For side bending fixtures, insert the inducer into the back of the PCB and move it vertically.



STEP 4:

Slide the metal cover until it makes a “click” sound indicating that it is securely in place.

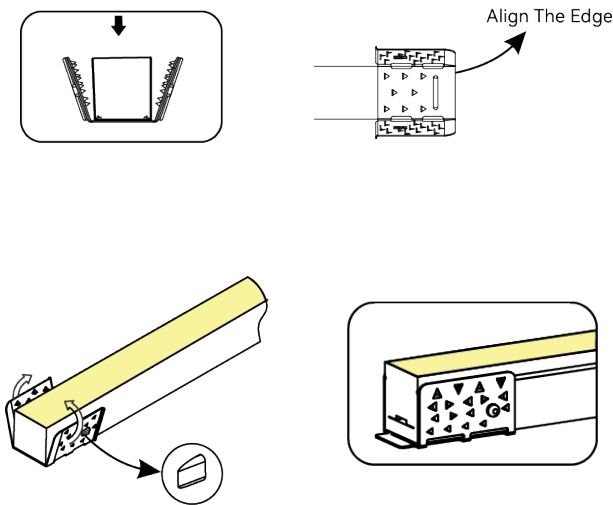


DIY CLICK CONNECTOR

Installation: End Cap

STEP 1:

Wrap the fixture tightly by anti-skidding clip.



STEP 2:

Slide the metal cover until it makes a “click” sound.

