

STANDARD LED LIGHT GUIDE PANEL

Indoor Dry Rated - 0.31in (8mm) Thick Profile - RGB, Mono & Bi-Color



TEMPERATURES

WORKING TEMPERATURE:

-22°F (-30°C) ~ 104°F (+40°C)

OUTPUT

LED Light	Samsung High CRI
Light Engine Type	Samsung LED Light Engine
Power Consumption	4W/ft (12W/m)
LED Configuration	One (1), two (2), three (3) or four (4) edges
LED Intervals	0.65in (16.66mm)

ELECTRICAL

Power Cord Size	26 AWG, 4 Conductors
Power Cord Length	Standard 59.06in (1500mm) Optional 118.11in (3000mm)
Power Supply	UL Class 2 or LPS DC 12 Volt: Max 4.86 Amp / 58.5 Watt DC 24 Volt: Max 3.77 Amp / 90.9 Watt or CE approved
Barrel Connector	2.1mm Male connector on power supply 5.5mm Female connector on LED Light Panel or Open Cable

FEATURES

Color Temperature	RGB, Mono or Bi-Color
Controller	DMX or controller by others
Heat Sinking	By aluminum channel
Safety Design	Plastic corner pieces for sharp corners and cable protection
Dimming	By external dimmer (optional)
Light Guide Panel	0.24in (6mm) Acrylic with V cut

PHYSICAL

Thickness	0.31in (8mm) Single-sided
Minimum Size	2in x 2in (51mm x 51mm)
Maximum Size	60in x 118in (1524mm x 2997mm)
Weight	1.65lbs / sq ft (7.64Kg / sq meter)
Mounting	By double sided tape, standoffs, z clips, or others

DEPENDABILITY

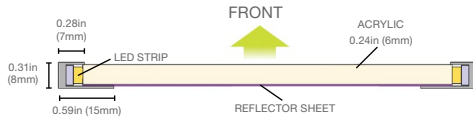
Lumen Maintenance	(L70) 50,000hrs
-------------------	-----------------

CERTIFICATIONS & FEATURES

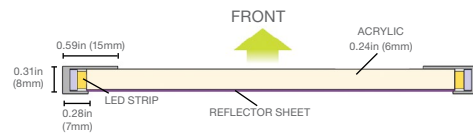


CONSTRUCTION OPTIONS

OPEN FACE - LED HOT SPOT VISIBLE



CLOSED FACE - LED HOT SPOT COVERED



DIMENSION (IN)	DIMENSION (MM)	LED	SURFACE BRIGHTNESS (LUX)	POWER CONSUMPTION (W)
6x12	152x304	1 long side	7,000	3.0
12x12	304x304	1 long side	3,500	3.0
18x24	457x609	2 long sides	5,000	13.2
24x36	609x914	2 long sides	3,600	20.4
36x72	914x1828	2 long sides	2,500	43.3
48x96	1219x2438	2 long sides	2,000	56.4
60x118	1500x3000	4 sides	2,000	98.0

CONFIGURATION OPTIONS

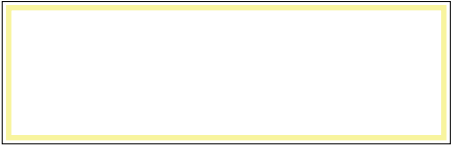
Standard LED Light Panel



SINGLE EDGE - Great for small format panels 533 millimeters/ 21 inches or less.

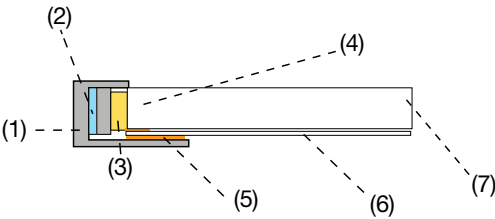


DOUBLE EDGE - Panels over 533 millimeters/ 21 inches wide require a double edge of LEDs for consistent light output.



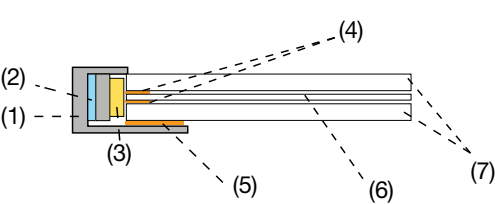
QUADRUPLE EDGE - Necessary when more light output is required. Maximum length 2997 millimeters/ 118 inches.

SINGLE SIDED

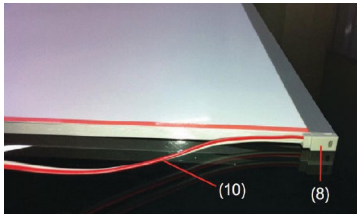
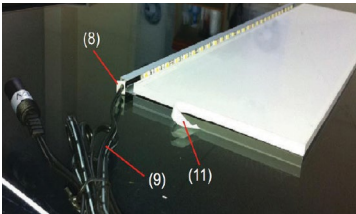


1. Heat Sink and LED Channel
2. 3M Thermal Tape
3. Samsung LED Light Engine
4. Reflective Sheet Bonding
5. Heat Sink and LED Channel Bonding
6. Reflective Polymer Film
7. Cast Acrylic Light Guide Plate (PMMA)

DOUBLE SIDED



1. Heat Sink and LED Channel
2. 3M Thermal Tape
3. Samsung LED Light Engine
4. Reflective Sheet Bonding
5. Heat Sink and LED Channel Bonding
6. Reflective Polymer Film
7. Cast Acrylic Light Guide Plate (PMMA)
8. Plastic Gormet to Protect the Wire & Provide a Clean Professional Finish
9. Power Cable with Barrel Connector, Fly Leads Optional
10. Interconnect Wire for Double Edge-Lit Panels.
11. Reflective Polymer Finish Tape



GALLERY SAMPLES
Standard LED Light Panel

