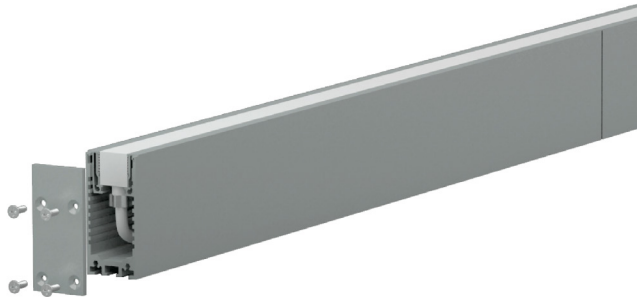


ALUMINUM RACEWAY

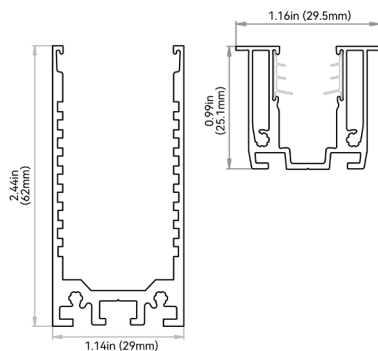
Installation Manual



Expanded serrated aluminum profile made from high-quality 6063 thin-wall aluminum, featuring a lightweight structure with concealed cable routing. Raceway space is up to 570mm², providing sufficient room to conceal injection-moulded bottom-feed connectors as well as standard male/female connectors. Suitable for facades where tidiness is required and for installations with limited wiring space.

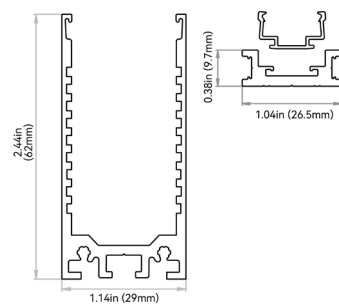
DIMENSIONS & COMPONENTS

FOR S160 / S270



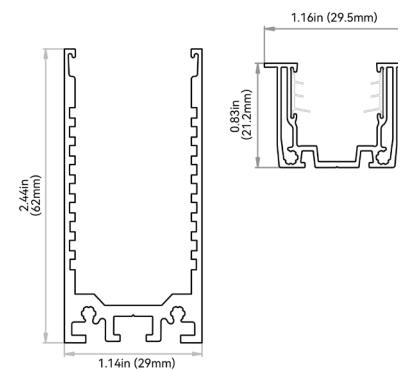
Tolerance: ± 0.01in (0.3mm)

FOR LIGHT STRIP



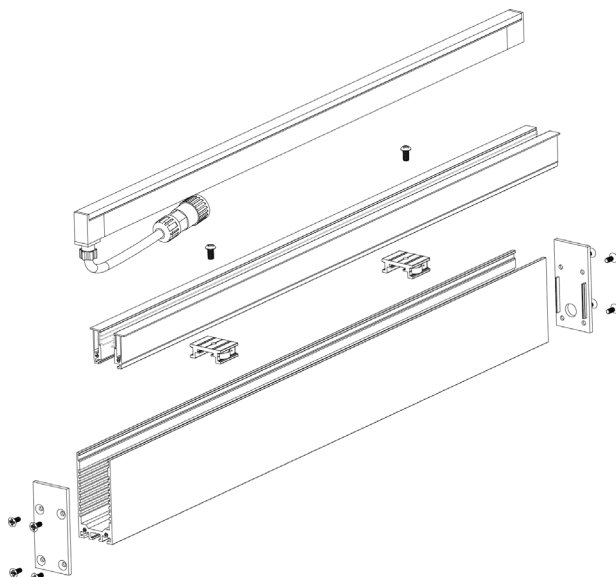
Tolerance: ± 0.01in (0.3mm)

FOR WAVE

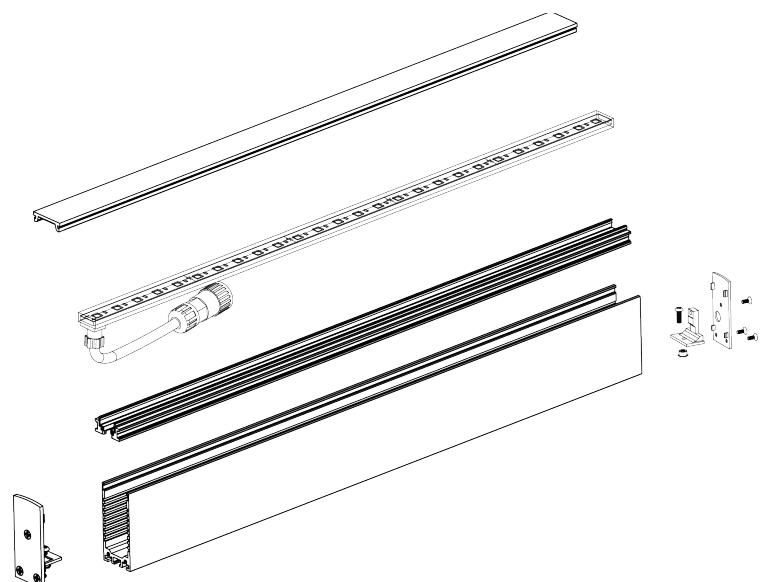


Tolerance: ± 0.01in (0.3mm)

APPLICABLE TO LIGHTSTRIP



APPLICABLE TO S160 / S270 / WAVE

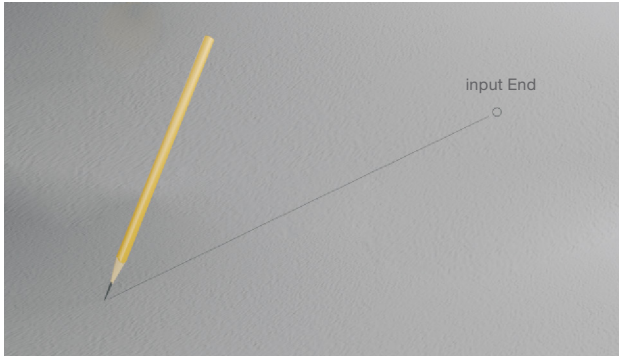


ALUMINUM RACEWAY

Installation

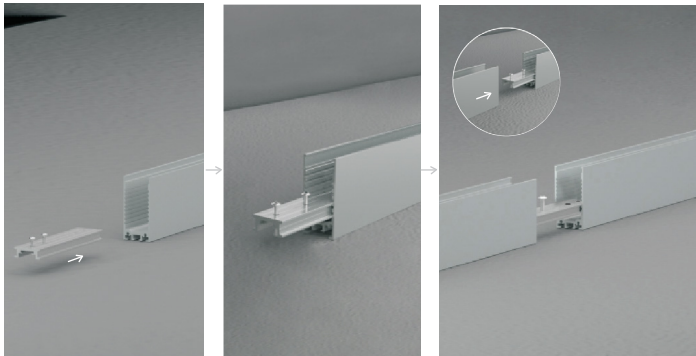
STEP 1:

Mark the mounting position and identify the input end.



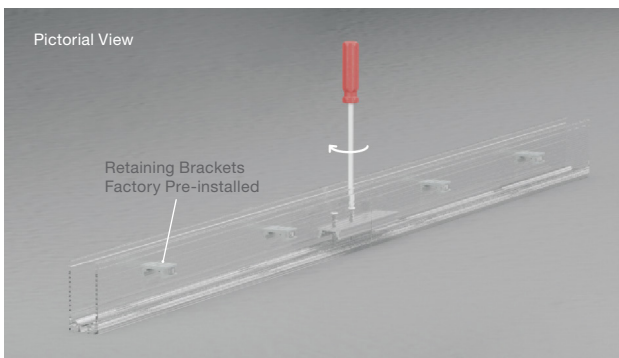
STEP 3:

Insert one end of the joint bracket into the bottom slot of one outer profile. Then insert the other end of the joint bracket into the bottom slot of the other outer profile.



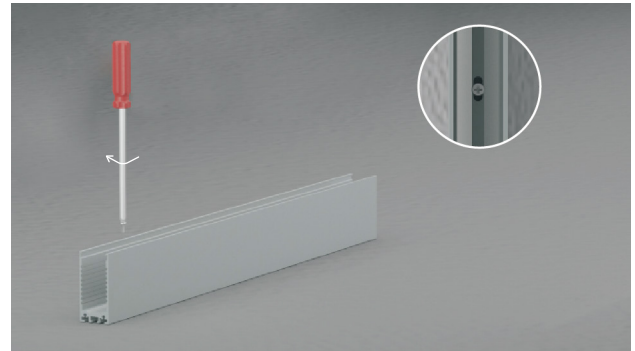
STEP 5:

Tighten the screws toward the bottom of the outer aluminum profile until fully locked.



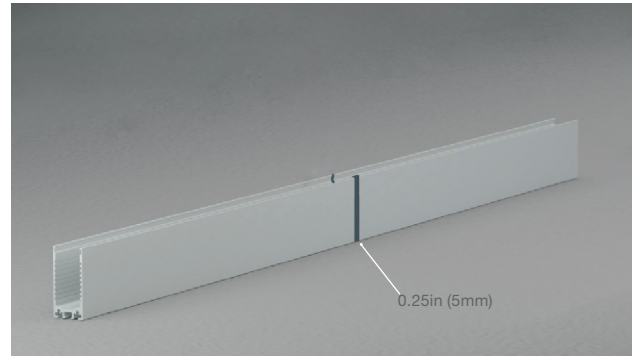
STEP 2:

Fix the outer aluminum profile in place.



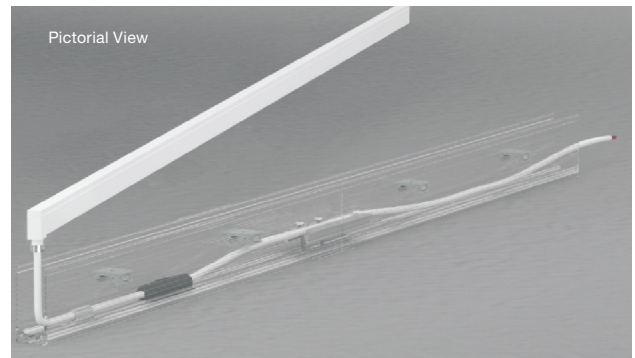
STEP 4:

Leave a 0.25in (5mm) gap between the two profiles.



STEP 6:

Route the wire under the retaining bracket and over the joining bracket.

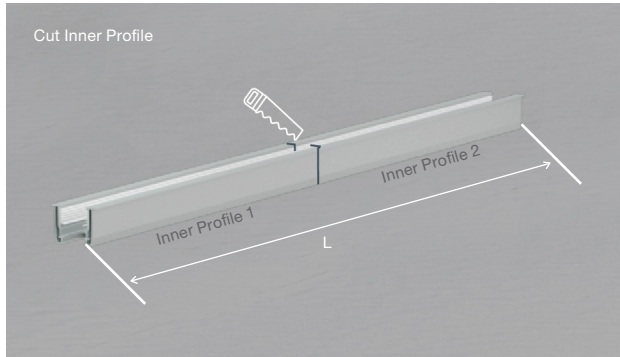


ALUMINUM RACEWAY

Installation Continued

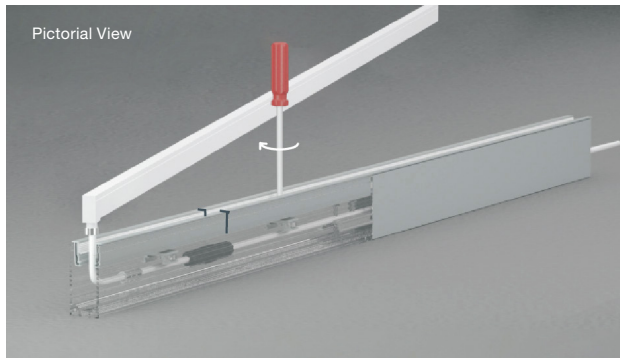
STEP 7:

Cut one inner profile into two equal halves. These two pieces are used to ensure the joints of the inner profiles do not align with the joints of the outer profiles. Use the two cut pieces to install the inner profiles.



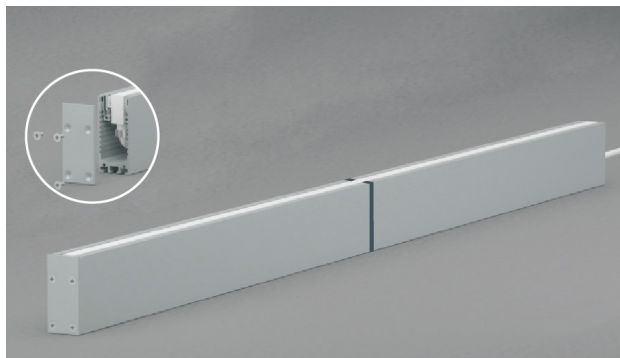
STEP 9:

Tighten the screws through the retaining bracket to lock the inner aluminum profile in place.



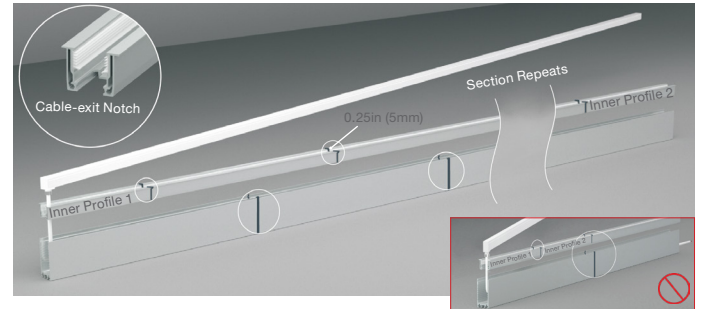
STEP 11:

Seal the front connector using the end cover (without a cable hole) and tighten the screws.



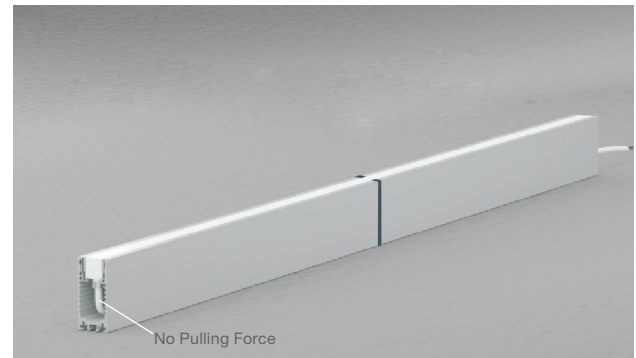
STEP 8:

Install the two cut inner profile pieces at each end of the outer profile. Leave a 0.25in (5mm) gap between the two inner profile pieces. Ensure the joint of the inner profiles does not line up with the joint of the outer profiles. This provides clearance for structural movement and thermal expansion/contraction.



STEP 10:

Press the light into position by hand and neatly arrange any excess cable. (Do not apply pulling force to the cable.)



STEP 12:

Thread the cable through the hole in the end cover and repeat Step 9 to seal the other end.

