

WHAT IS A VECTOR FILE AND WHY DO I NEED ONE?

To understand a vector file, it helps to start with what most people already know: a raster file.

A raster image is made up of a grid of pixels — tiny colored squares that, when grouped together, form an image. Every photo taken with a digital camera is a raster file. Zoom in far enough and you'll see those individual pixels. No matter the resolution, a raster image will eventually look pixelated.

A vector file works differently. Instead of pixels, it stores mathematical formulas that define points, lines, curves, line weights, colors, and fills. Because the image is defined by math rather than a fixed grid, it scales to any size without any loss of quality. Vector files are the standard in graphic design, signage, cut vinyl, embroidery, and CNC fabrication. They are natively readable by CNC machines and CAD software, and are created in programs like Adobe Illustrator, CorelDRAW, or AutoCAD.

For engineering your lighting solution, we require either the original vector file or a properly exported file from one of those programs. **PLEASE NOTE: VALIS MANUFACTURING CANNOT COMMENCE ON ANY SIGN OR LIGHTING PROJECT UNTIL A VALID VECTOR FILE HAS BEEN RECEIVED AND APPROVED.**

REQUIRED FILE TYPES FOR VALIS MANUFACTURING:

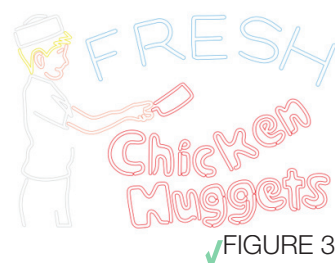
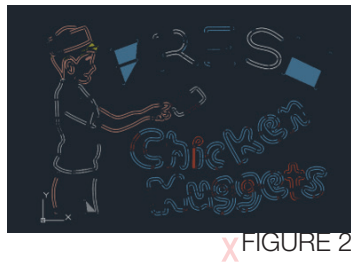
.pdf - Exported from AutoCAD, Adobe Illustrator or Corel Draw	.svg - Exported from AutoCAD, Adobe Illustrator or Corel Draw	.eps - Exported from AutoCAD, Adobe Illustrator or Corel Draw
.dwg - Exported from AutoCAD, Adobe Illustrator or Corel Draw	.dxf - Exported from AutoCAD, Adobe Illustrator or Corel Draw	.ai - Original Adobe Illustrator File

DRAWING SPECIFICATIONS:

Keep drawings simple — line-work only. Important: Due to machining limitations, the minimum stroke width for Valis: Faux Neon is 10mm (0.39in).

Adding a color fill to the drawing (as in Figure 1) will result in broken and missing lines when the file is imported into AutoCAD (Figure 2).

You can include color in the drawing if it is applied only to the lines themselves. Figure 3 shows an example of a PDF with correct line-work that imports cleanly into AutoCAD (Figure 4).



WHAT IF I CAN'T PROVIDE THE REQUIRED FILE TYPE?

No problem. GLLS has an in-house graphic designer who can take your concept and build a CNC-ready file from scratch. Provide a description, a raster image, or a reference — something that shows us what you're going for. Once a design is approved, we'll provide a quote for your project. Custom design services are offered at \$150/hour. To get started, reach out to sales@glls.com.