



Double Effect,
Double Safety



NEW TECHNOLOGY

WORLD'S FIRST
SYNERGY DOTTING TECHNOLOGY

MFU & RF SYNERGY

Achieving
amazing
therapeutic
effects

by fusion of the two
world's most famous
lifting treatments
in one technology.

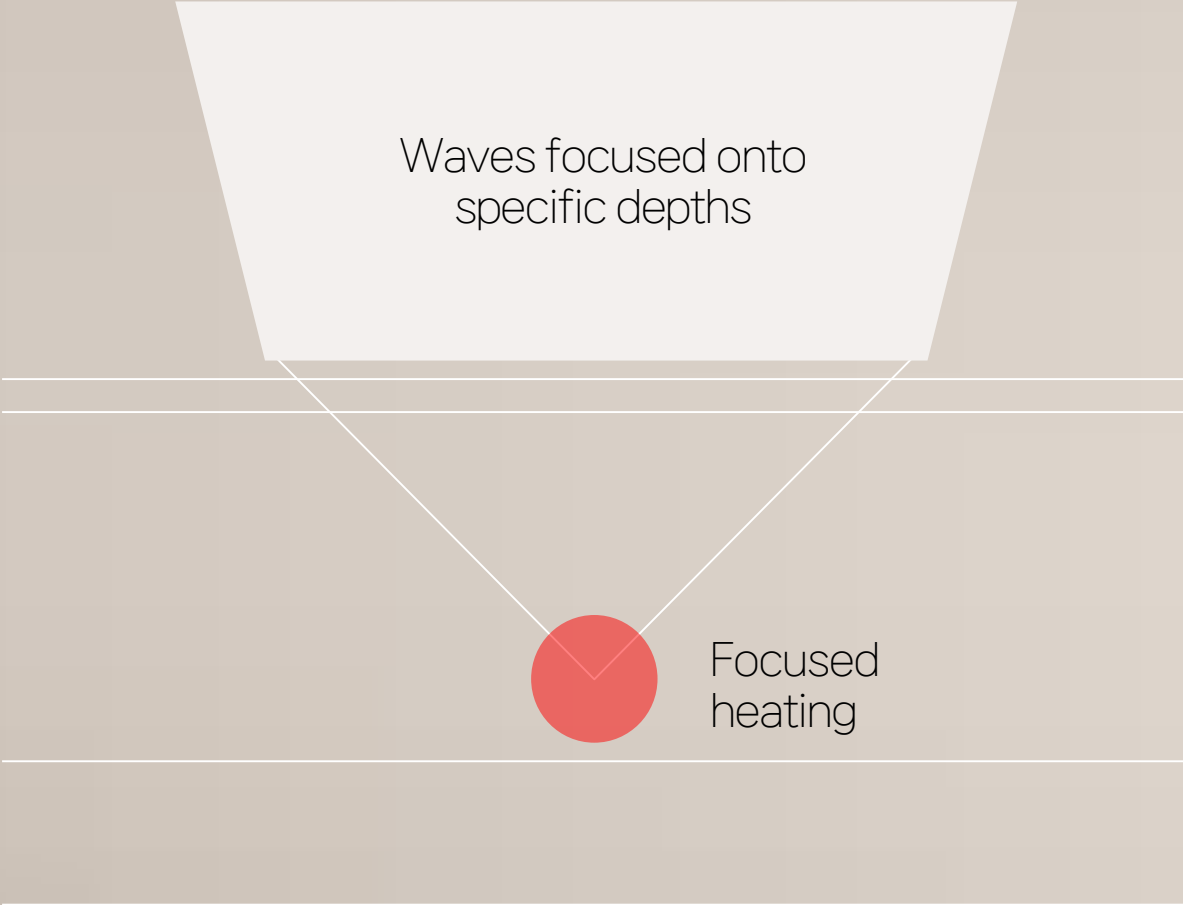
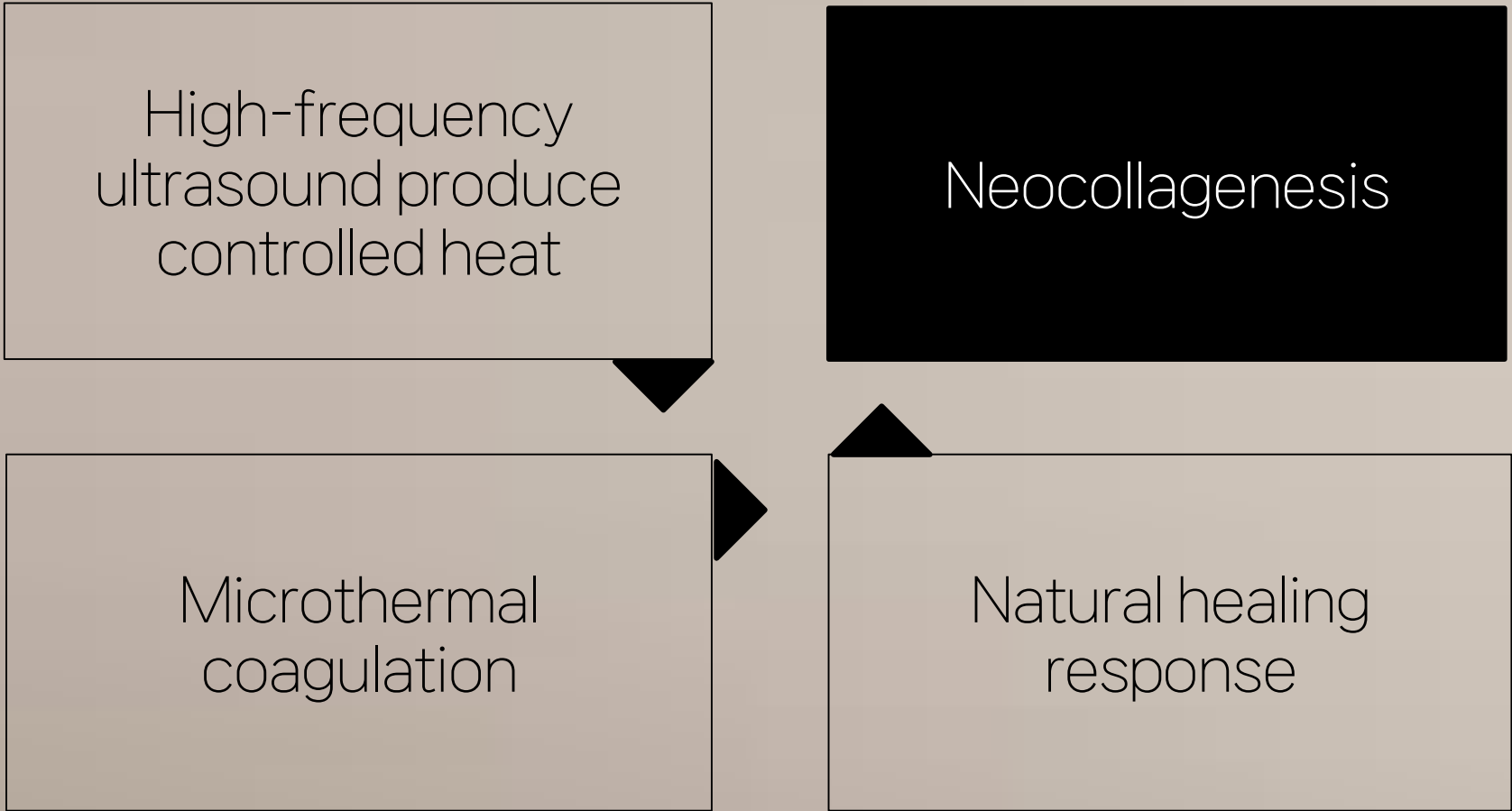
ONE MULTIPLE

TREATMENT

SKIN GOALS

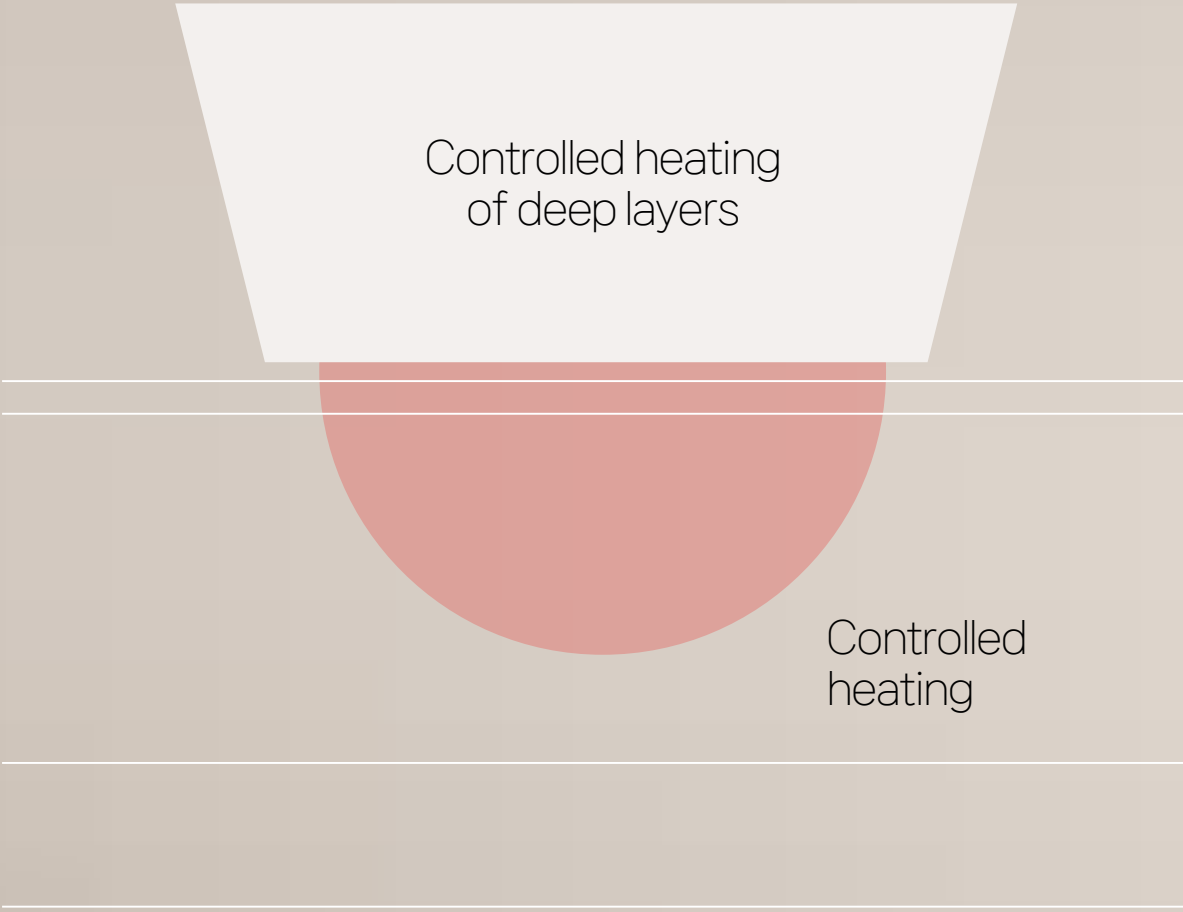
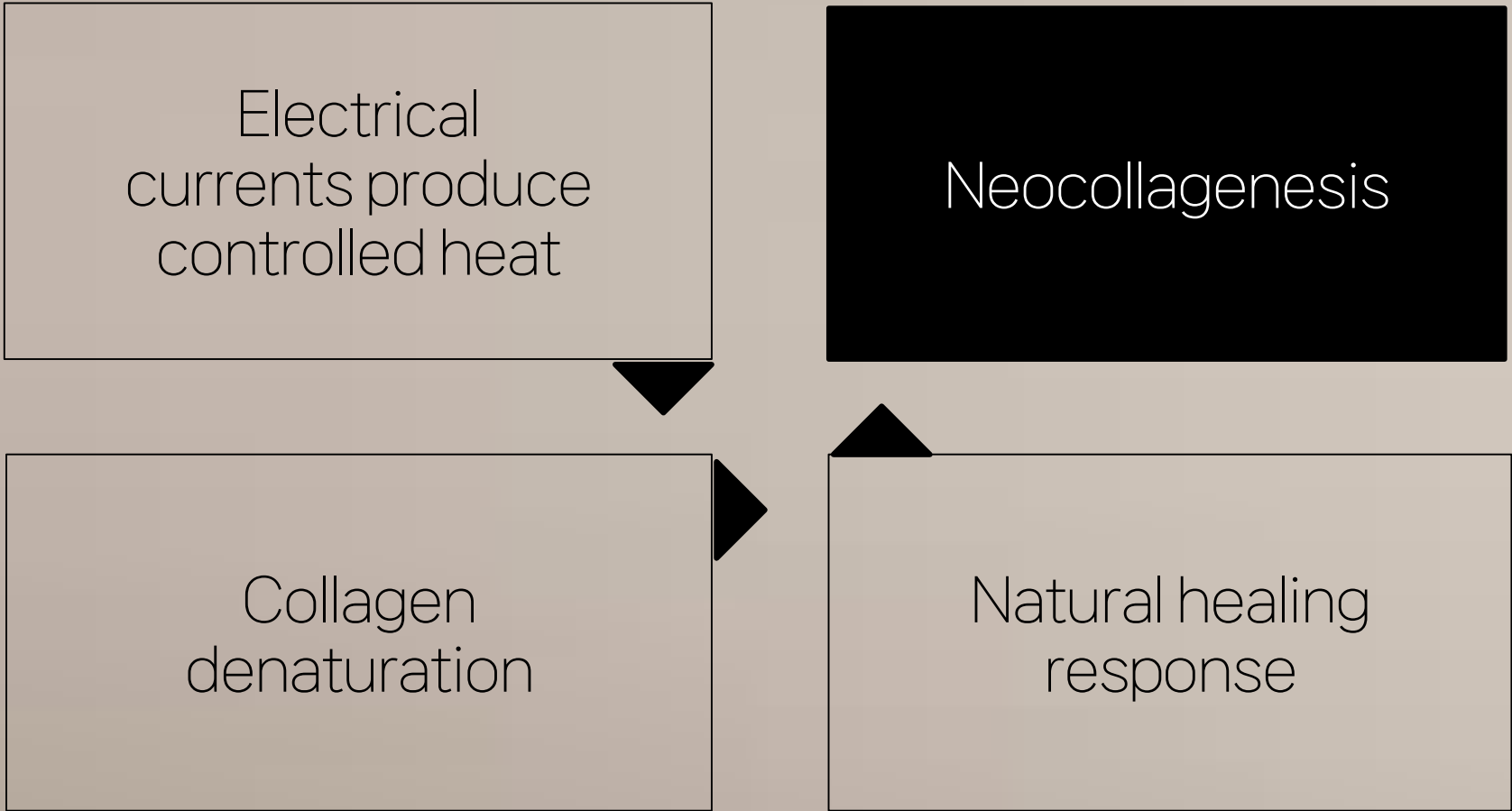
Tightening
Contouring
Elasticity
Texture
Moisturizing

MFU



*MFU : Microfocused Ultrasound

RF

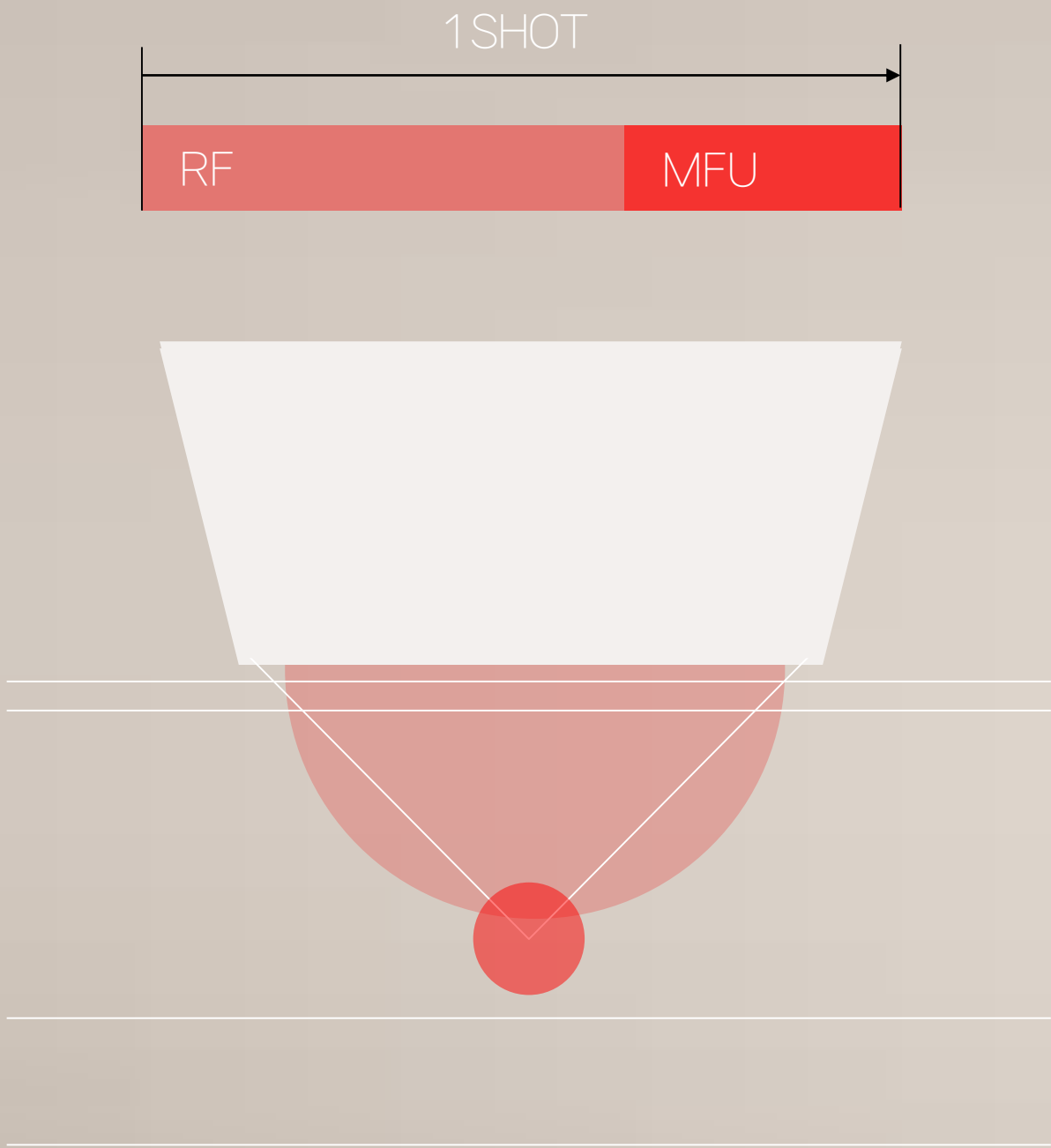


*MFU : Microfocused Ultrasound

WORLD'S FIRST
SYNERGY DOTTING TECHNOLOGY

MFU & RF SYNERGY

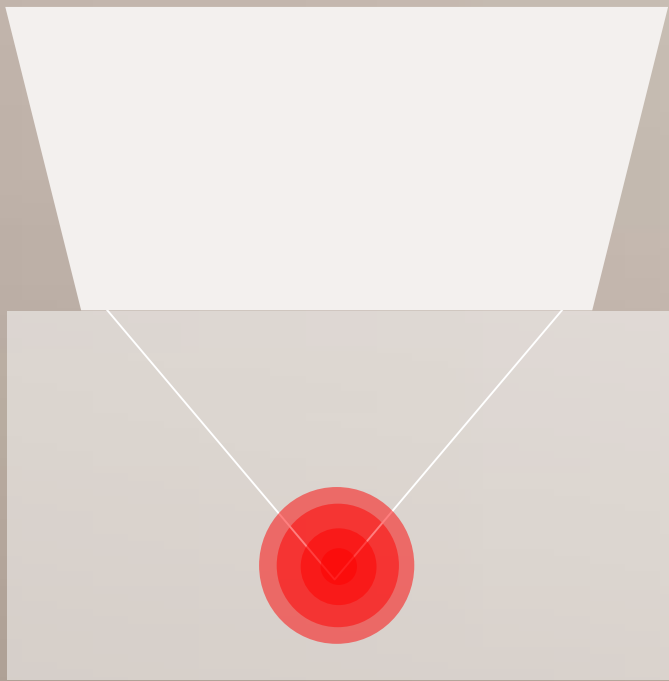
One hand piece for cross-irradiation of MFU and RF



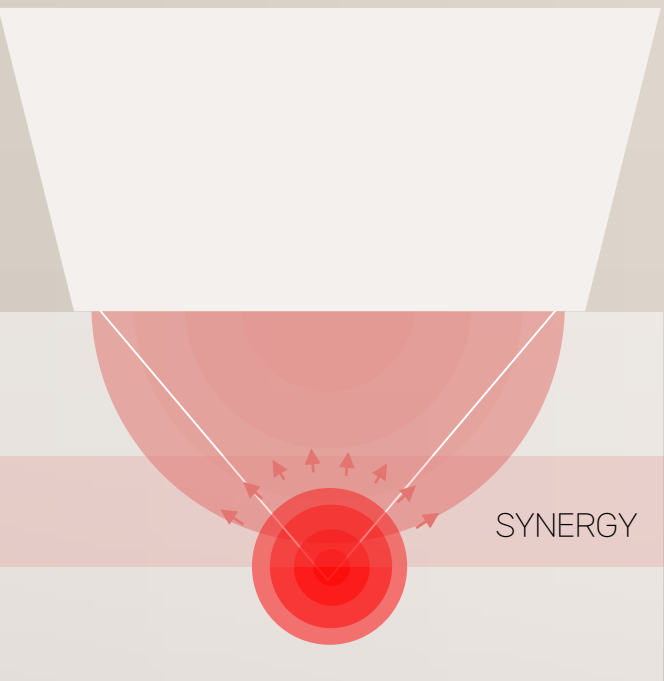
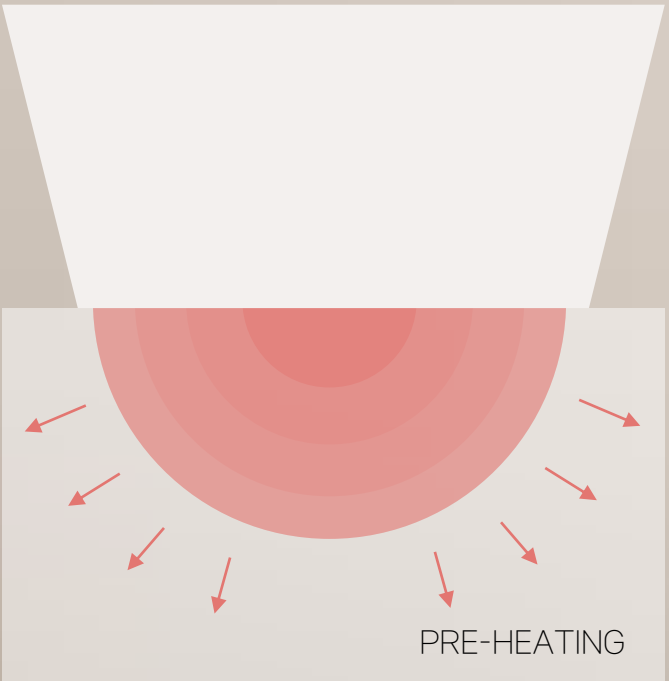
*MFU : Microfocused Ultrasound

MFU & RF

WORLD'S FIRST SYNERGY
DOTTING SYSTEM



PRE-HEATING EFFECT



*MFU : Microfocused Ultrasound

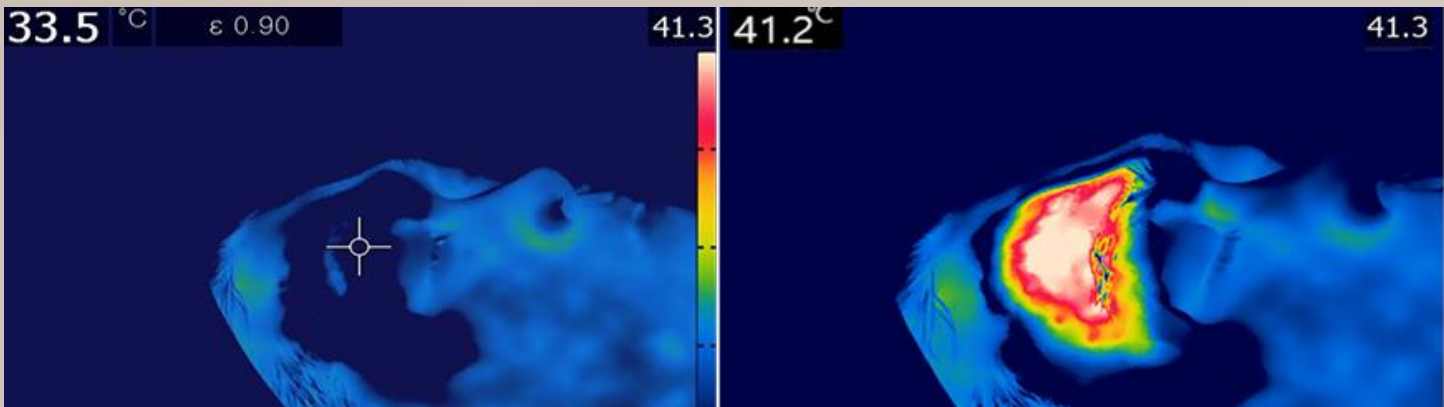
MFU & RF

WORLD'S FIRST SYNERGY
DOTTING SYSTEM

BEFORE

AV.+7.7°C

AFTER

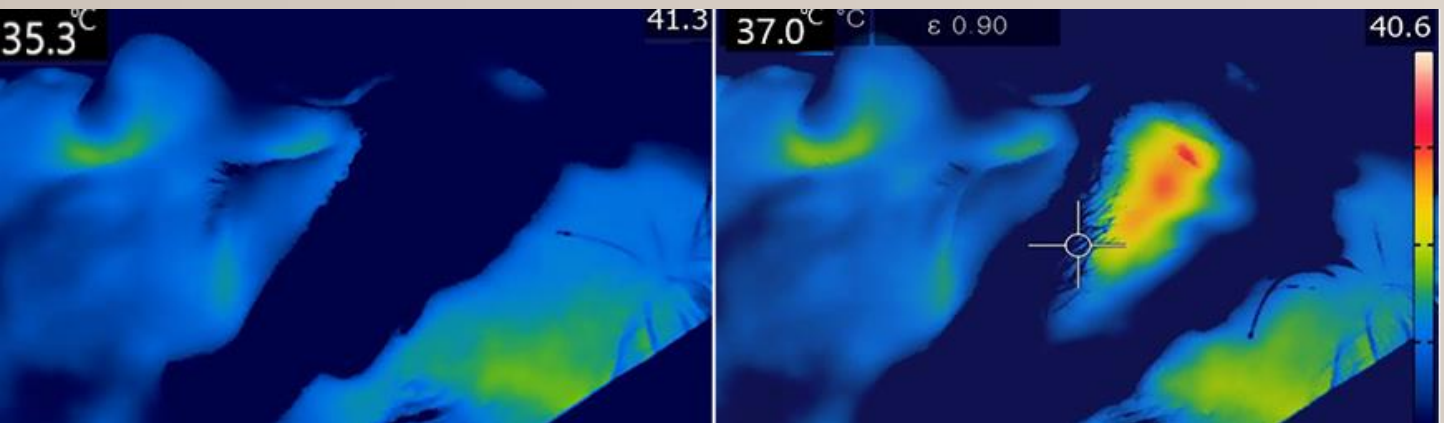


HIGHER
HEATING
EFFECT

BEFORE

AV.+1.7°C

AFTER



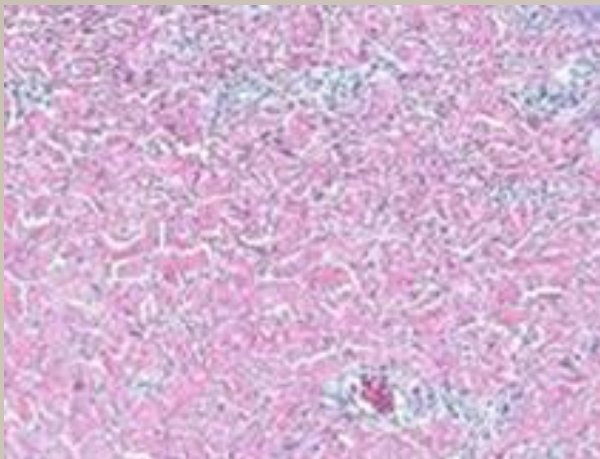
VS. MFU
ONLY

*MFU : Microfocused Ultrasound

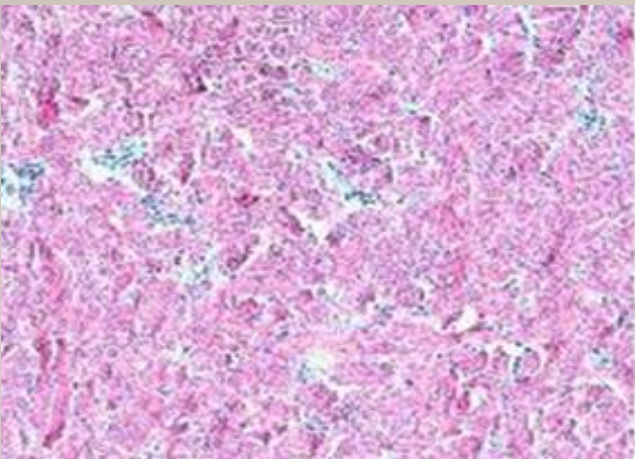
MFU & RF

WORLD'S FIRST SYNERGY
DOTTING SYSTEM

BEFORE

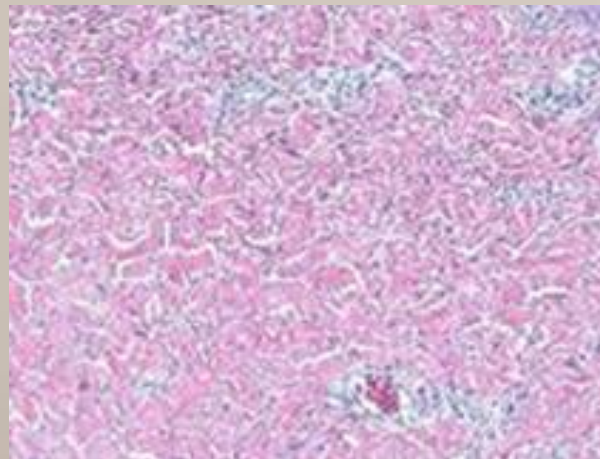


AFTER

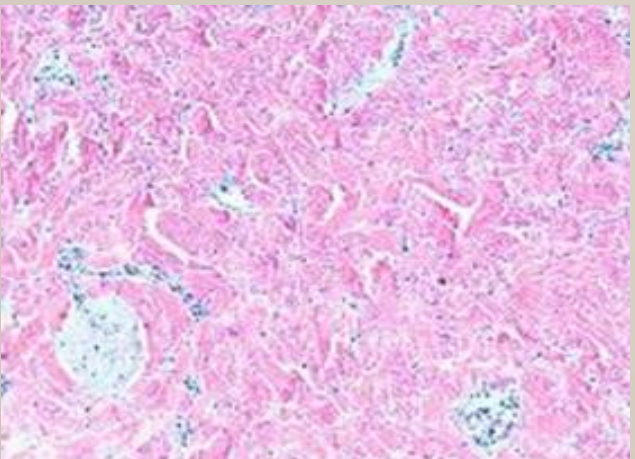


HIGHER
COLLAGEN
ACTIVITY

BEFORE



AFTER



VS. **MFU
ONLY**

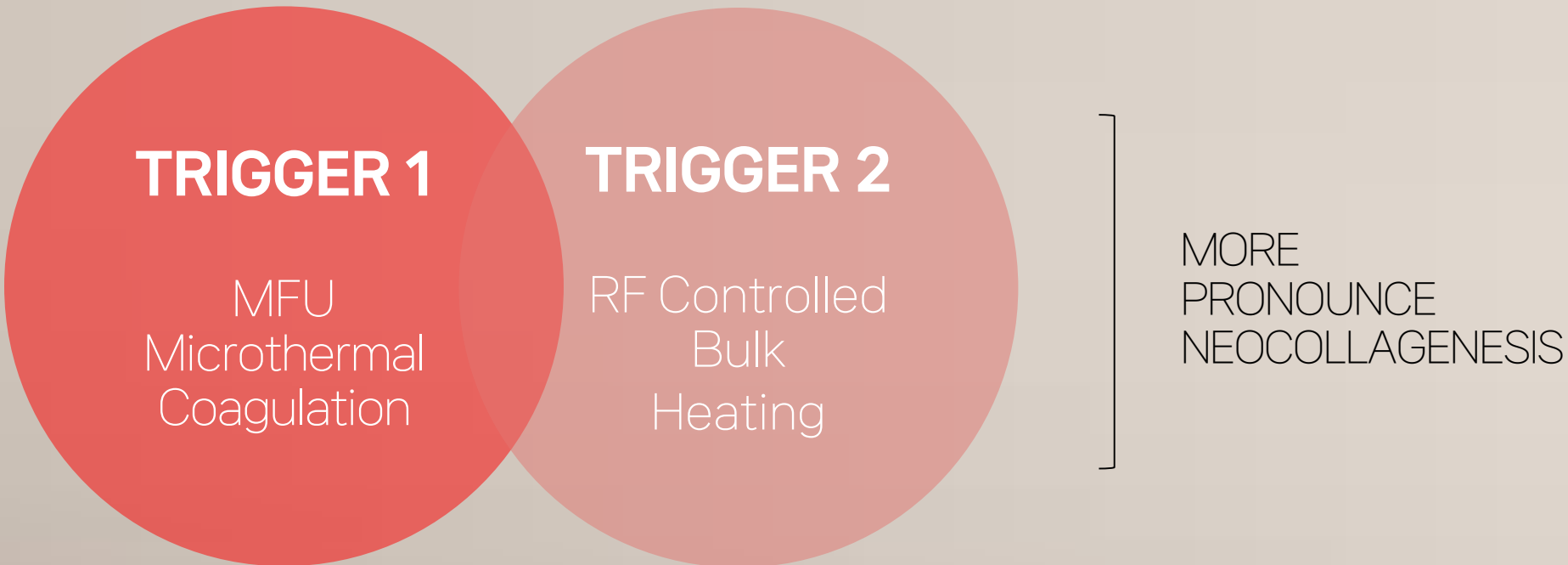
Preclinical Performance and Safety Evaluation Tests for Focused
Ultrasound Stimulator System (Model: NEW DOUBLO / V-RO).
Seoul National University Bundang Hospital. 2021.

*MFU : Microfocused Ultrasound

MFU & RF

WORLD'S FIRST SYNERGY
DOTTING SYSTEM

TRIGGERING HEALING RESPONSE X2



*MFU : Microfocused Ultrasound

MFU & RF

WORLD'S FIRST SYNERGY
DOTTING SYSTEM

ENHANCING HEALING PROCESS X2

The heat generated during RF treatments can lead to vasodilation, which is the widening of blood vessels. This dilation can enhance blood flow to the treated area, improving oxygen and nutrient delivery to the cells.

1

Blood
Circulation
Improvement

2

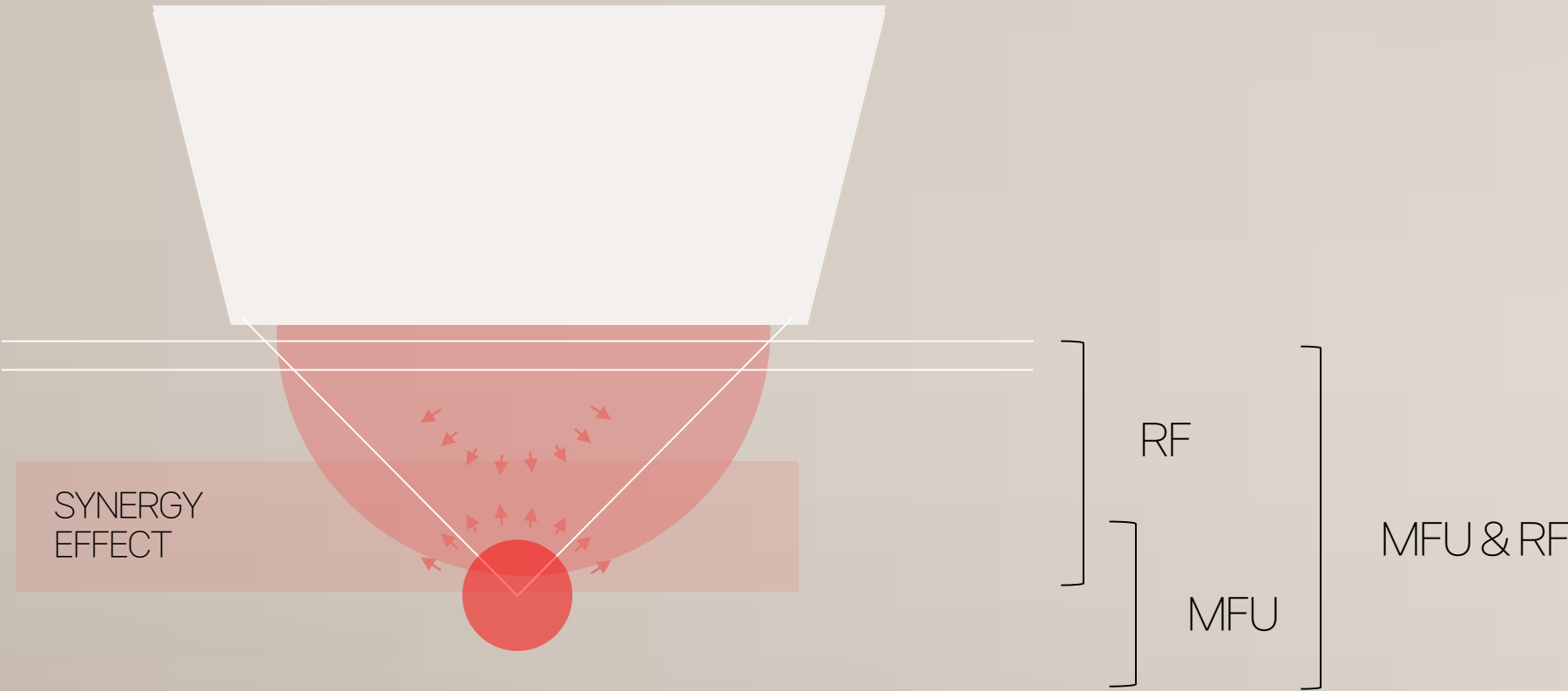
Cells
Metabolism
Enhancement

The increase in temperature within the targeted skin tissue can stimulate cellular metabolic activity. As cells become more active, they may require more oxygen for their functions.

MFU & RF

WORLD'S FIRST SYNERGY
DOTTING SYSTEM

EFFECT EXPANSION X2



*MFU : Microfocused Ultrasound

“Combining HIFU with bipolar RF SYNERGISTICALLY IMPROVES SKIN REJUVENATION, including pore reduction, periorbital wrinkle improvement, skin elasticity, and skin moisturization.”

*MFU : Microfocused Ultrasound

Received: 24 June 2023 | Accepted: 19 August 2023

DOI: 10.1111/srt.13452

ORIGINAL ARTICLE

WILEY

Efficacy of radiofrequency combined with single-dot ultrasound efficacy for skin rejuvenation: A non-randomized split-face trial with blinded response evaluation

Ji Won Byun¹ | Yoo Ri Kang² | Soojung Park³ | Wonkyu Hong⁴

¹Department of Dermatology, INHA University School of Medicine, Incheon, South Korea

²Clinical Trial Division, Human Co., Ltd. Skin Clinical Trial Center, Seoul, South Korea

³Department of Dermatology, Human Dermatology Clinic, Gangseo, Seoul, South Korea

⁴Department of Dermatology, Human Dermatology Clinic, Cheong-la, Incheon, South Korea

Correspondence

Wonkyu Hong, Department of Dermatology, Human Dermatology Clinic, Cheong-la, 594, Jungbong-daero, Seo-gu, Incheon, Republic of Korea.
Email: hwk0417@gmail.com

Funding information

the Human Co., Ltd. Skin Clinical Trial Center

Abstract

Background: High-intensity focused ultrasound (HIFU) and radiofrequency (RF) are non-invasive modalities for skin rejuvenation, but their combined effects have not been evaluated.

Objective: We evaluated and compared the efficacy of HIFU alone and combined HIFU and bipolar RF using a newly designed probe.

Methods: Twenty-two Korean adults with facial wrinkles and aging underwent treatment on both sides of their face: HIFU-only on the left and HIFU combined with RF on the right. Skin parameters were measured at different time points to evaluate the improvement in skin rejuvenation.

Results: HIFU treatment significantly improved skin parameters, including pore volume and number, skin elasticity, depth of eye wrinkles, degree of sagging in the eye area, nasolabial folds and cheeks, volume of the jawline, skin density, and permittivity. Furthermore, combining bipolar RF with HIFU treatment enhanced efficacy in reducing pore number, improving skin elasticity, diminishing eye wrinkle depth, and increasing skin moisturization. These findings indicate that bipolar RF can synergistically improve skin rejuvenation by providing a thermal effect to the upper papillary dermis, which is more superficial than the target area of HIFU.

Conclusion: Combining HIFU with bipolar RF synergistically improves skin rejuvenation, including pore reduction, periorbital wrinkle improvement, skin elasticity, and skin moisturization.

KEYWORDS

bipolar radiofrequency, facial lifting, high intensity focused ultrasound, skin rejuvenation

INTRODUCTION

Various non-ablative modalities have been developed for skin rejuvenation, including High-intensity focused ultrasound (HIFU) and

radiofrequency (RF) are non-invasive modalities for skin rejuvenation that selectively induce thermal injury in the dermis while sparing the overlying epidermis.^{1,2} These techniques target dermal collagen for remodeling and have been used for lifting eyebrows, nasolabial folds,

This is an open access article under the terms of the [Creative Commons Attribution-NonCommercial-NoDerivs License](#), which permits use and distribution in any medium, provided the original work is properly cited, the use is non-commercial and no modifications or adaptations are made.

© 2023 The Authors. *Skin Research and Technology* published by John Wiley & Sons Ltd.

Skin Res Technol. 2023;29:e13452.
<https://doi.org/10.1111/srt.13452>

wileyonlinelibrary.com/journal/srt | 1 of 8



AMAZING RESULTS

MFU & RF

WORLD'S FIRST SYNERGY
DOTTING SYSTEM

VS. MFU
ONLY

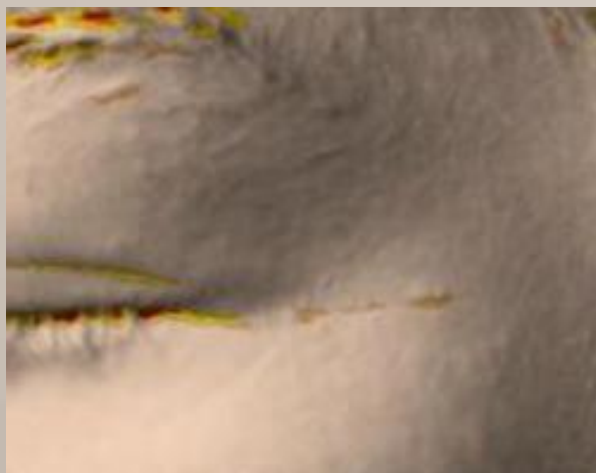
BEFORE



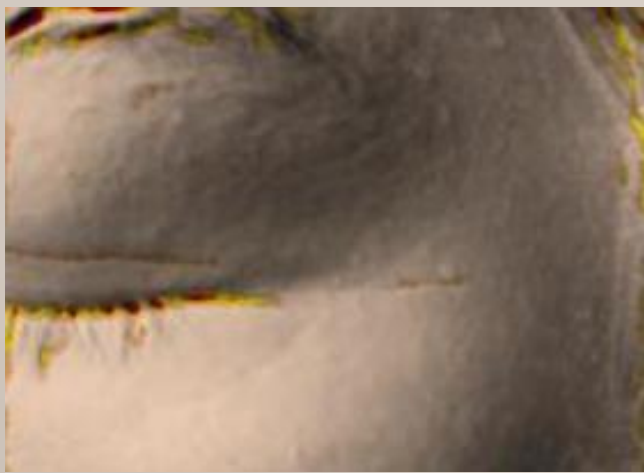
AFTER



BEFORE



AFTER



62%
MORE
EFFECTIVE
EYE
WRINKLES
IMPROVEMENT

***8 WEEKS**

Superiority of HIFU + RF Synergy compared to HIFU. Human body application test results from Human Skin Clinical Trial Center. August 2022.

MFU & RF

WORLD'S FIRST SYNERGY
DOTTING SYSTEM

VS. MFU
ONLY

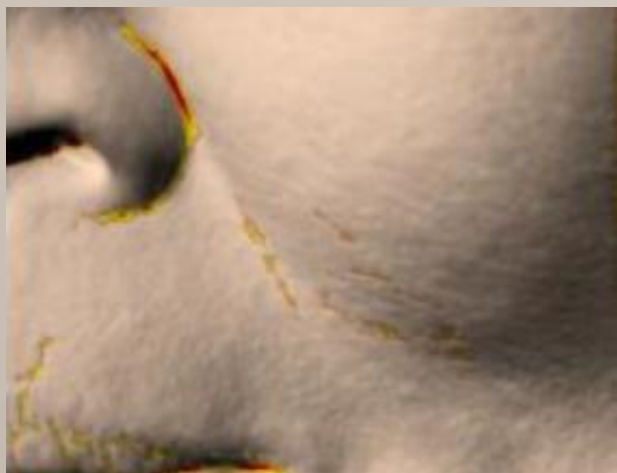
BEFORE



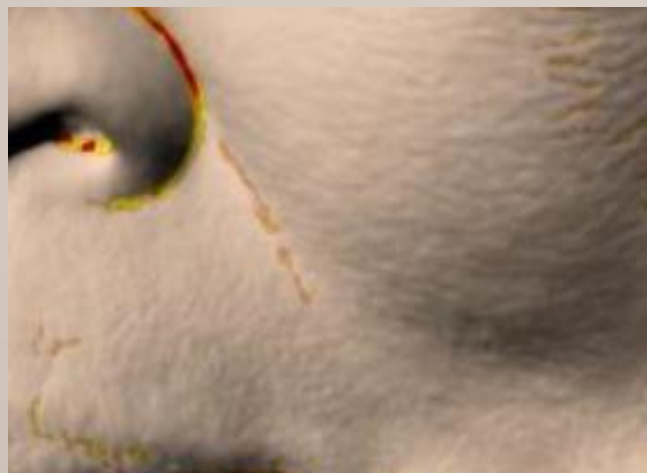
AFTER



BEFORE



AFTER



27%
MORE
EFFECTIVE
SMILE
LINES
IMPROVEMENT

***8 WEEKS**

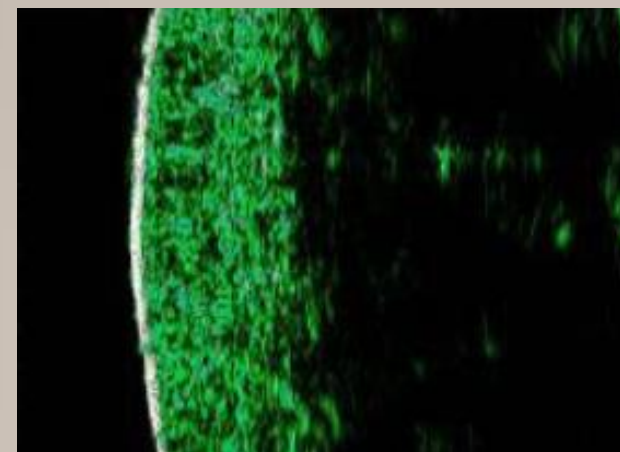
Superiority of HIFU + RF Synergy compared to HIFU. Human body application test results from Human Skin Clinical Trial Center. August 2022.

MFU & RF

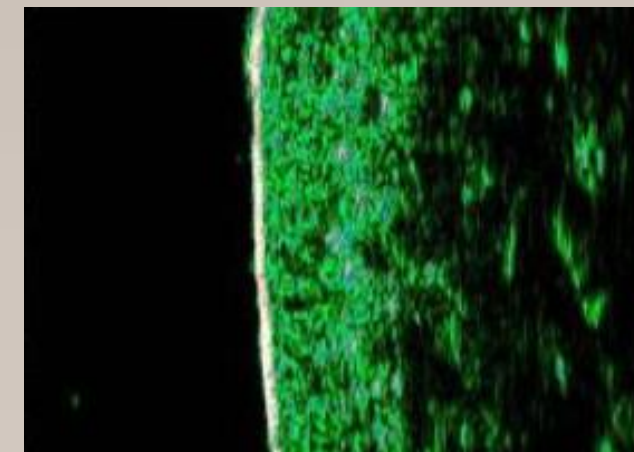
WORLD'S FIRST SYNERGY
DOTTING SYSTEM

VS. MFU
ONLY

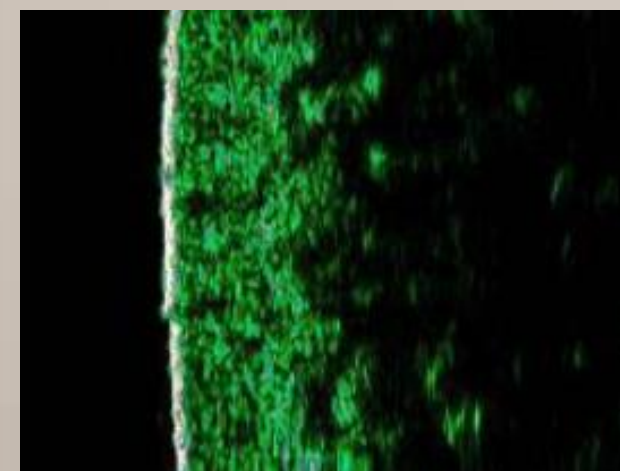
BEFORE



AFTER



BEFORE



AFTER



43%
MORE
EFFECTIVE
INNER SKIN
DENSITY
IMPROVEMENT

*8 WEEKS

Superiority of HIFU + RF Synergy compared to HIFU. Human body application test results from Human Skin Clinical Trial Center. August 2022.

MFU & RF

WORLD'S FIRST SYNERGY
DOTTING SYSTEM

VS. MFU
ONLY

BEFORE



AFTER



BEFORE



AFTER



31%
MORE
EFFECTIVE
JAWLINE
LIFTING
EFFECT

*8 WEEKS

Superiority of HIFU + RF Synergy compared to HIFU. Human body application test results from Human Skin Clinical Trial Center. August 2022.

MFU & RF

WORLD'S FIRST SYNERGY
DOTTING SYSTEM

Average comparative
advantage of Synergy
Dotting (MFU&RF)
of the New Doublo to
MFU treatment in terms
of effects

Superiority of HIFU + RF Synergy compared to HIFU.
Human body application test results from Human
Skin Clinical Trial Center. August 2022.

Category	Parameter	MFU	MFU & RF Synergy
Skin Tightening & Contouring	Eye Wrinkle Improvement	x 1	x 1.6
	Smile Lines Improvement	x 1	x 1.3
	Inner Skin Density	x 1	x 1.8
	Jawline Improvement	x 1	x 1.4
Elasticity	Elasticity of Outer Skin	x 1	x 1.4
	Elasticity of Inner Skin	x 1	x 1.3
	Elasticity Recovery	x 1	x 1.2
Skin Texture	Pores Density	x 1	x 1.8
	Pores Count	x 1	x 2.0
	Pores Depth	x 1	x 1.6
	Pores Volume	x 1	x 1.2
	Skin Irregularity	x 1	x 1.7
Skin Moisturizing	Outer Skin	x 1	x 1.7
	Inner Skin	x 1	x 4.8

MFU & RF

WORLD'S FIRST SYNERGY
DOTTING SYSTEM

EYE WRINKLES
SMILE LINES
JAWLINE

BEFORE



AFTER



Woman
40s

MFU & RF

WORLD'S FIRST SYNERGY
DOTTING SYSTEM

EYE WRINKLES
SMILE LINES
JAWLINE

BEFORE



AFTER



Woman
40s



ULTIMATE SOLUTION

NEW DOUBLO 2.0 MAIN ADVANCE POINTS



VERSATILITY

Tailor treatments to each patient's unique needs.

4:1

4 HANDPIECES CONNECTION

2 Synergy Dotting Handpieces,
2 Focused Linear Handpieces

20

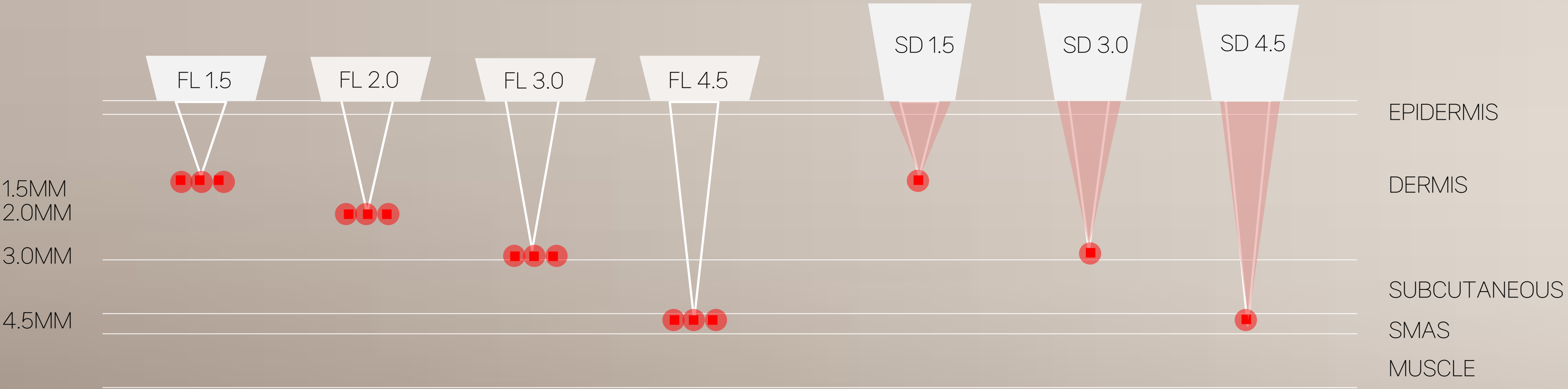
20 TYPES OF CARTRIDGES FOR FACE AND BODY

- 4 SD 1.5, 3.0, 4.5, 9.0
- 4 SD Long 1.5, 3.0, 4.5, 9.0
- 6 FL 1.5, 2.0, 3.0, 4.5, 6.0, 9.0
- 6 FL Advanced 1.5, 2.0, 3.0, 4.5, 6.0, 9.0

NEW DOUBLO 2.0 MAIN ADVANCE POINTS

Targeted treatments require precision to avoid affecting surrounding healthy tissue. Cartridges with adjustable penetration depth settings can help practitioners tailor the treatment to the specific area they want to address.

PRECISION IN TARGETING



NEW DOUBLO 2.0
MAIN ADVANCE POINTS

Tailor treatments to suit individual needs, ensuring a more personalized and patient-centered approach to care.


LAYERED TREATMENTS

Layered treatments with cartridges of different penetration depths may be employed. This approach allows for comprehensive and multi-level treatment for complex conditions.

ULTIMATE
CUSTOMIZATION

Choose between advanced and standard cartridges, switch between LINE and DOT modes, layer your treatments, adjust power, spacing, frequency, offer your patients ultimate customization

ON  **MAXIMUM EFFECT**

 OFF **DOWNTIME**

ON  **CUSTOMIZED EXPERIENCE**

NEW DOUBLO 2.0 MAIN ADVANCE POINTS

EFFECTIVENESS PROVED BY CLINICAL STUDIES

Superiority of HIFU + RF Synergy compared to HIFU.
Human body application test results from Human
Skin Clinical Trial Center. August 2022.

+83%

SMILE LINES
IMPROVEMENT

+25%

DENSITY OF
INNER SKIN

+29%

JAWLINE
IMPROVEMENT

+10%

EYE WRINKLES
IMPROVEMENT

NEW DOUBLO 2.0 MAIN ADVANCE POINTS

EFFECTIVENESS PROVED BY CLINICAL STUDIES

Superiority of HIFU + RF Synergy compared to HIFU.
Human body application test results from Human
Skin Clinical Trial Center. August 2022.

+22%

SKIN ELASTICITY
IMPROVEMENT

+35%

MOISTURIZING
OF OUTER SKIN

+24%

SKIN PORES
IMPROVEMENT

+6%

SKIN TEXTURE
IMPROVEMENT

NEW DOUBLO 2.0
MAIN ADVANCE POINTS

new 2.0 **dōublo™**

FULL-BODY MFU SCULPTING & SKIN TIGHTENING

The 4 cartridges for body application allow to offer your customers ultimate body sculpting treatments.

IMMEDIATE RESULTS

NO DOWNTIME

NO PAIN

- Abdomen
- Flanks
- Bra Line
- Neck
- Decolletage
- Arms
- Underarms
- Back
- Buttocks
- Hips
- Thighs
- Knees
- Calves
- Ankles



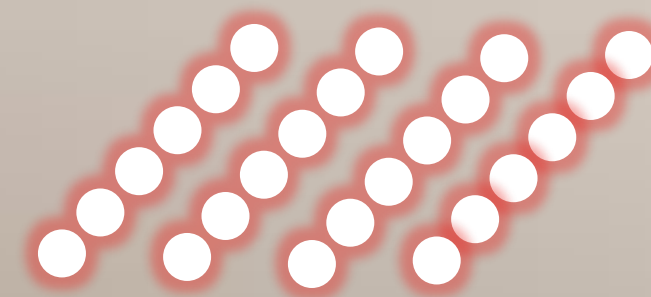
For export

NEW DOUBLO 2.0 MAIN ADVANCE POINTS

100% COVERAGE WITH LINE MODE

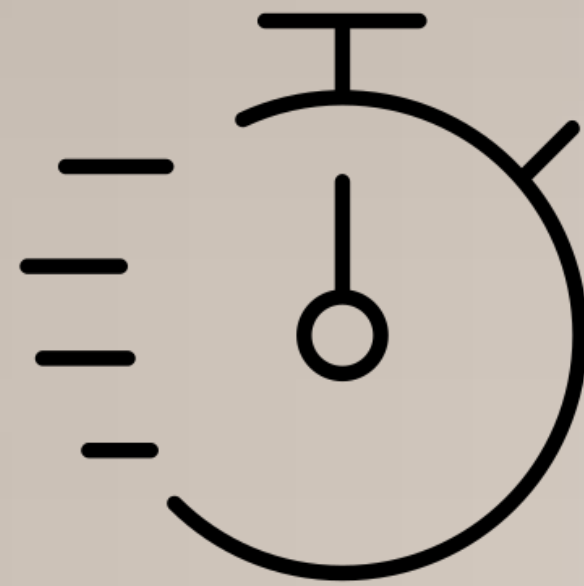
Line mode offers uniform, faster treatments for larger areas and may be less uncomfortable, while dot mode allows for precise, customizable treatments with less risk of overheating.

* One-touch switch between modes



NEW DOUBLO 2.0 MAIN ADVANCE POINTS

EXTREMELY FAST TREATMENT



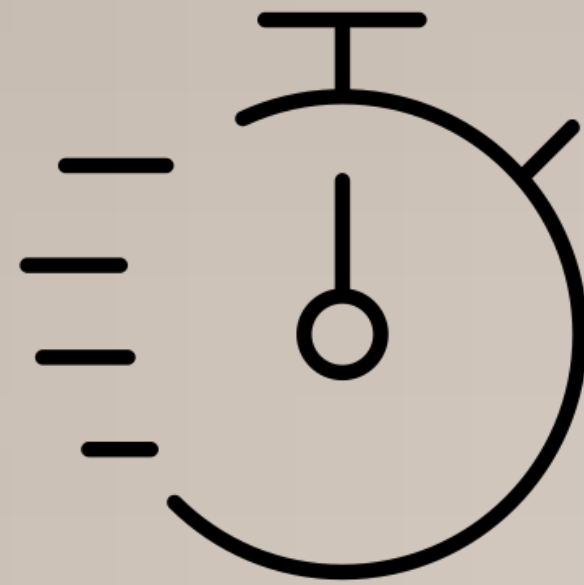
Standard 300 shots treatment for facial skin, depending on parameters settings, starting from

3 MINUTES

Treating the face for facial skin tightening and lifting, a basic MFU treatment might involve around 300 to 400 individual ultrasound shots. On the other hand, when treating larger areas or areas with more significant laxity, such as the neck or décolletage, the number of shots may increase to 500 or more.

NEW DOUBLO 2.0 MAIN ADVANCE POINTS

EXTREMELY FAST TREATMENT



TIME SAVING SOLUTIONS

- ☒ ON 4 HANPIECES CONNECTED
NO NEED TO SWITCH CARTRIDGES
- ☒ ON AUTOMATIC RECOGNITION
OF HANDPIECE
- ☒ ON EASY POWER ADJUSTMENT
VIA SUB LCD DISPLAY
ON THE HANDPIECE

NEW DOUBLO 2.0
MAIN ADVANCE POINTS

SAFETY

CONTACT
SENSOR

The cartridge will stop operating
when it is not contacted with the skin

PATENTED



MOVEMENT
SENSOR

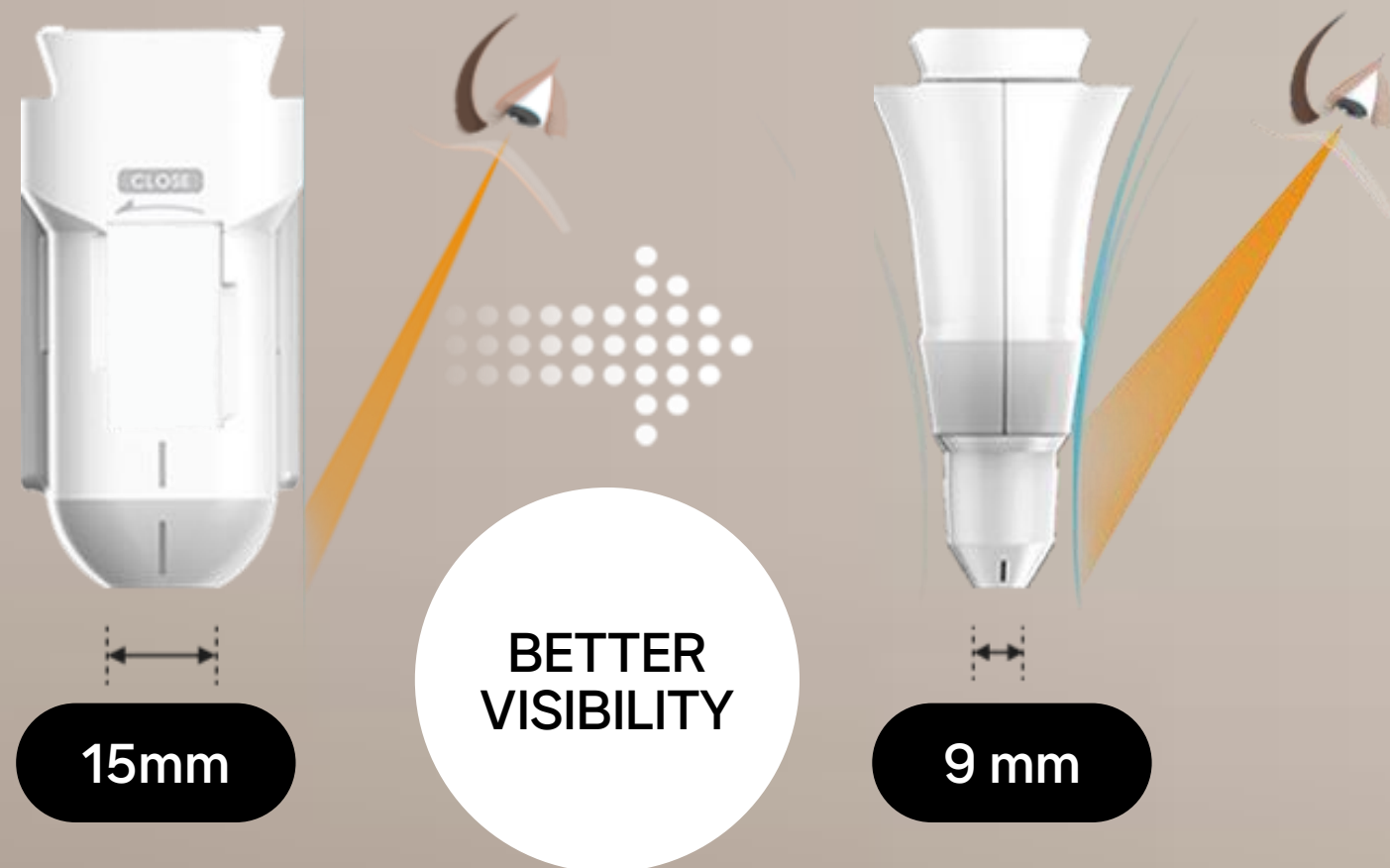
The movement sensor prevents
consecutive shots in one place

PATENTED



NEW DOUBLO 2.0 MAIN ADVANCE POINTS

SAFETY



Earlier versions
of devices in
Doublo Series

new 2.0 **dōublo™**

SLIMMER AND LIGHTER CARTRIDGES

GREATER MANEUVERABILITY, PRECISION, AND OBSERVATION ANGLE

make it easier to target specific areas accurately, reducing the risk of unintended treatment in surrounding regions and minimize the potential for injury or discomfort to the patient.

REDUCED WEIGHT AND SIZE

of cartridges can lead to less fatigue for practitioners during extended procedures, helping maintain consistent treatment quality and safety.



DEVICE SPECIFICATIONS

NEW DOUBLO 2.0 SPECIFICATIONS



2:1

2 TYPES OF HANDPIECES

Synergy Dotting HP – MFU & RF Synergy Dotting
Focused Liner HP – Classic MFU

4:1

QUATTRO HANDPIECES

2 Synergy Dotting HP,
2 Focused Linear HP

20

20 TYPES OF CARTRIDGES FOR FACE AND BODY

- 4 SD 1.5, 3.0, 4.5, 9.0
- 4 SD Long 1.5, 3.0, 4.5, 9.0
- 6 FL 1.5, 2.0, 3.0, 4.5, 6.0, 9.0
- 6 FL Advanced 1.5, 2.0, 3.0, 4.5, 6.0, 9.0

NEW DOUBLO 2.0 SPECIFICATIONS

new 2.0 **dōublo**



SD
x2

SYNERGY DOTTING HANDPIECE

The handpiece for application of the synergy of MFU and RF, MFU only and RF only modes available



1 DOT MFU
MULTIPOLAR RF

FL
x2

FOCUSED LINEAR HANDPIECE

The handpiece for application of the classis MFU, DOTs and LINE modes available



NEW DOUBLO 2.0 SPECIFICATIONS

CARTRIDGES

SD
x8



APPLICATION	FACE			BODY
DEPTH	1.5 mm	3.0 mm	4.5 mm	9.0 mm
P – PEN TYPE				
L – LONG TYPE				

NEW DOUBLO 2.0 SPECIFICATIONS

CARTRIDGES



APPLICATION	FACE				BODY	
DEPTH	1.5 mm	2.0 mm	3.0 mm	4.5 mm	6.0 mm	9.0 mm
CURVATURE	SLIM		NORMAL		WIDE	
CARTRIDGES						
	ADVANCED					
						

NEW DOUBLO 2.0 SPECIFICATIONS

CONVENIENCE SYSTEM

12.1" WIDE DISPLAY

1. Easy and intuitive GUI
2. Easy parameter setting

HANDPIECE SUB LCD DISPLAY

1. Check parameters
2. Check shots count
3. Regulate power
4. Intuitive GUI



2-WAY SHOOTING METHOD









1. Foot switch
2. Handpiece Sub LCD Display



NEW DOUBLO 2.0

SPECIFICATIONS

Type	Depth, Frequency	Model Name				DOT Mode	LINE Mode	Spacing	Length
FL (MFU)	1.5mm, 7MHz	S1.5		A1.5		0.1J - 0.5J	0.1J - 0.5J	1.0 - 5.0mm	5.0 - 25mm
	2.0mm, 7MHz	S2.0		A2.0		0.1J - 1.0J	0.1J - 0.8J		
	3.0mm, 7MHz	N3.0		A3.0		0.1J - 1.0J	0.1J - 1.0J		
	4.5mm, 4MHz	N4.5		A4.5		0.1J - 1.5J	0.1J - 1.0J		
	6.0mm, 2MHz	W6.0		A6.0		0.1J - 3.0J	0.1J - 2.0J		
	9.0mm, 2MHz	W9.0		A9.0		0.1J - 3.0J	0.1J - 2.0J		

Type	Depth, Frequency	RF Frequency	Model Name				Power	Hz
SD (MFU+ RF)	1.5mm, 7MHz	2MHz Bipolar RF	P1.5		L1.5		Lv 1 - 10	Max. 10Hz*
	3.0mm, 7MHz	2MHz Bipolar RF	P3.0		L3.0			
	4.5mm, 4MHz	2MHz Bipolar RF	P4.5		L4.5			
	9.0mm, 2MHz	2MHz Bipolar RF	W9.0		L9.0			

* 7 - 10 Hz depending on power level



ABOUT HIRONIC

HIRONIC is an medical aesthetics equipment manufacturer from South Korea, an industry leader, known for our innovative, high-tech medical and aesthetic energy-based devices, such as New Doublo, Silkro, PICOHI, and others. We prioritize research and development to create cutting-edge solutions that deliver safe and effective treatments, benefiting both practitioners and patients.

**FIND
OUT
MORE**

www.hironic.com

**GIVE
US A
CALL**

+82 31 525 7000

**SEND
YOUR
REQUEST**

info@hironic.com



Double Effect,
Double Safety