

## PROJECT STATUS

Phase 1 RERA Approved  
RERA No.: PRM/KA/RERA/1251/308/PR/280324/006756

### Project Approved by:

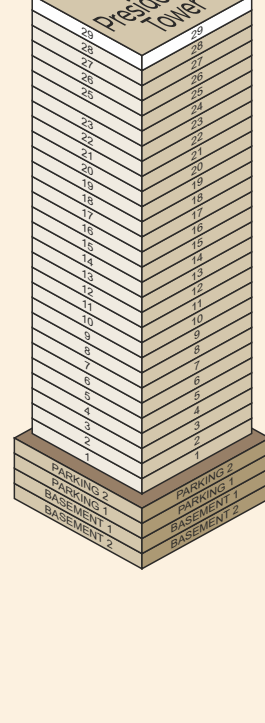


### Clubhouse Approval Received

## ONSITE STATUS

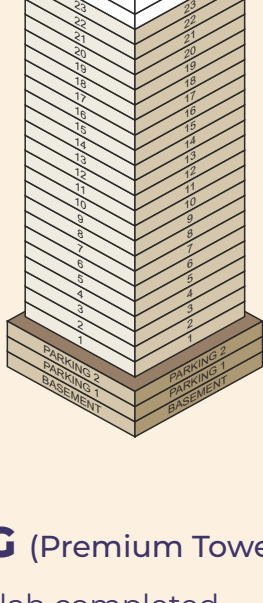
### TOWER E (Presidential Tower)

- 30th Floor slab completed
- 2nd to 22nd Floor second coat coarse putty application completed
- 2nd to 24th Floor balcony railing completed (1 series & 4 series living balcony pending due to passenger hoist & debris shoot respectively)
- 2nd to 20th Floor bathroom waterproofing completed
- 2nd to 8th Floor balcony & utility waterproofing completed
- 2nd to 28th Floor GI wire-pulling completed
- 2nd to 24th Floor plumbing core-cutting completed
- 2nd to 13th Floor bathroom plumbing pipe fixing completed. 14th to 18th Floor in progress
- 2nd to 23rd Floor fire-fighting pipe work in progress
- 2nd & 3rd Floor tiling in progress



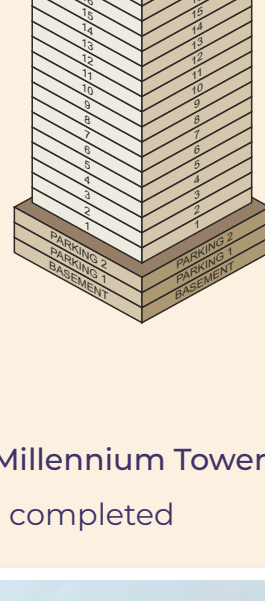
### TOWER F (Premium Tower)

- 25th Floor slab completed
- 2nd to 17th Floor second coat coarse putty application completed
- 2nd to 18th Floor balcony railing completed
- 2nd to 12th Floor bathroom waterproofing completed
- 2nd to 8th Floor balcony waterproofing completed
- 2nd to 17th Floor GI wire-pulling completed
- 2nd to 20th Floor plumbing core-cutting completed
- 2nd to 11th Floor plumbing pipe fixing completed. 12th Floor work in progress
- 2nd to 17th Floor fire-fighting pipe work in progress



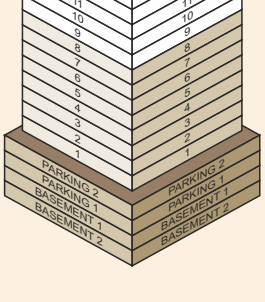
### TOWER G (Premium Tower)

- 25th Floor slab completed
- 2nd to 20th Floor second coat coarse putty application completed
- 2nd to 20th Floor balcony railing in progress
- 2nd to 14th Floor bathroom waterproofing completed
- 2nd to 7th Floor balcony waterproofing completed
- 2nd to 17th Floor GI wire-pulling completed
- 2nd to 21st Floor plumbing core-cutting completed
- 2nd Floor tiling work completed. 3rd & 4th Floor tiling in progress
- 2nd to 16th Floor fire-fighting pipe work in progress



### TOWER C (Millennium Tower)

- 10th Floor slab completed



## VILLAS

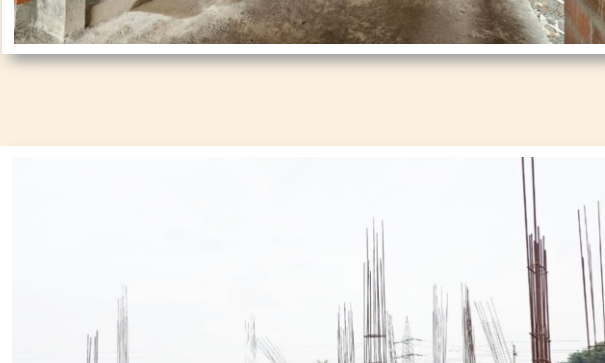


### R1 East-facing 4 BHK

- Villas 3, 4, 5, 6, 7, 8: 2nd Floor slab completed
- Villas 5, 6, 7, 8: Block work in progress

### R2 East-facing 5BHK

- Villas 9 to 17: 2nd Floor slab completed. Block work completed
- Villas 14, 15, 16: Electrical conduit work in progress
- Villa 17: Internal plastering completed. Putty work in progress. External plastering in progress.

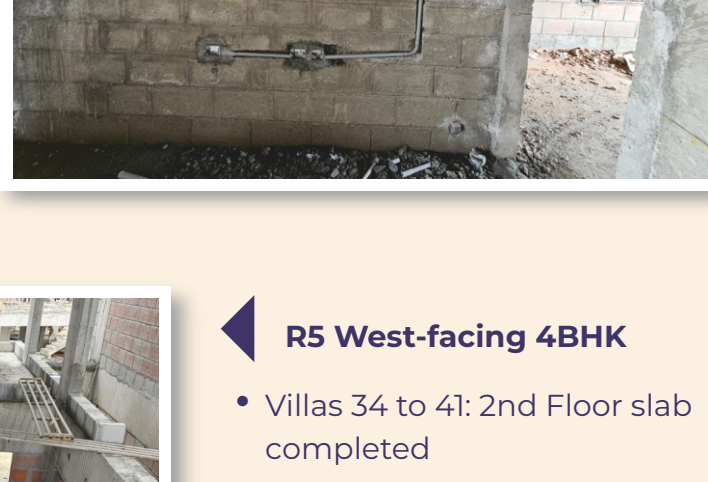


### R3 North-facing 5BHK

- Villas 18, 19, 20, 21, 22: Plinth completed

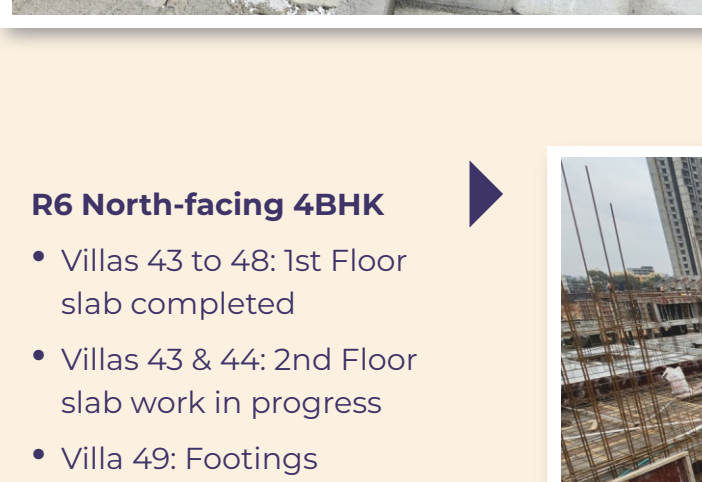
### R4 West-facing 5BHK

- Villas 23 to 33: 2nd Floor slab completed
- Villas 23 to 29: Block work completed
- Villas 30, 31, 32, 33: Ground floor & 1st Floor block work in progress
- Villa 23: Internal plastering in progress
- Villas 24, 25, 26: Electrical conduit work in progress



### R5 West-facing 4BHK

- Villas 34 to 41: 2nd Floor slab completed
- Villa 42: 2nd Floor slab completed. Terrace slab in progress
- Villas 34 to 42: Ground Floor block work in progress
- Villas 34 to 39: 1st Floor block work in progress



### R6 North-facing 4BHK

- Villas 43 to 48: 1st Floor slab completed
- Villas 43 & 44: 2nd Floor slab work in progress
- Villa 49: Footings completed



### R7 North-facing 4BHK

- Villas 50 to 55: 1st Floor slab completed
- Villas 50 & 51: 2nd Floor slab completed

### R8 North-facing 5BHK

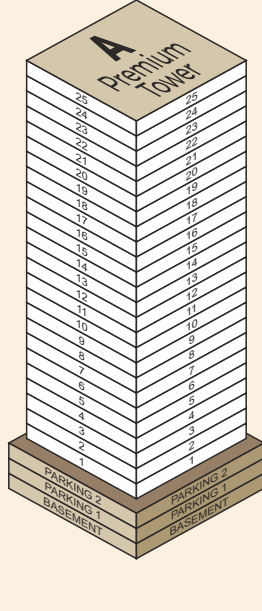
- Villas 58, 59, 60: 2nd Floor slab completed
- Villa 57: 1st Floor slab completed
- Villa 59: 2nd Floor slab completed
- Villa 60: Terrace slab completed





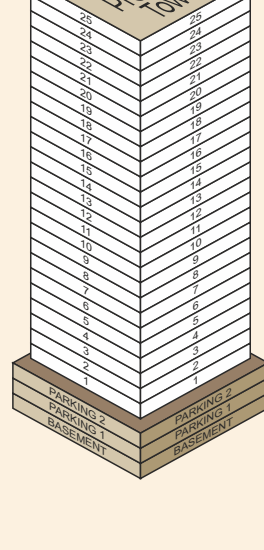
### TOWER A (Premium Tower)

- 1st Floor slab completed



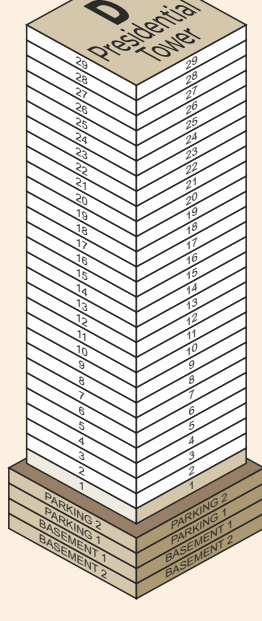
### TOWER B (Premium Tower)

- 1st Floor slab completed



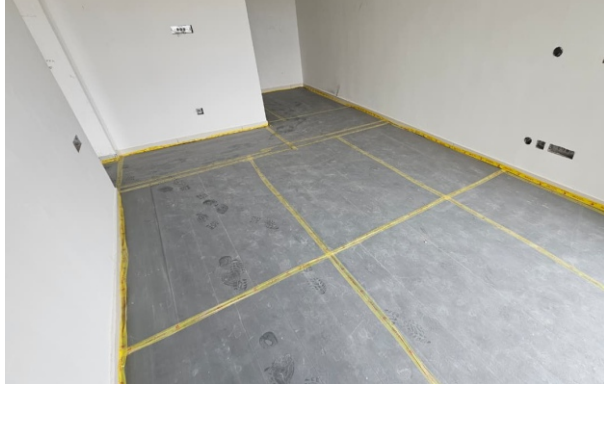
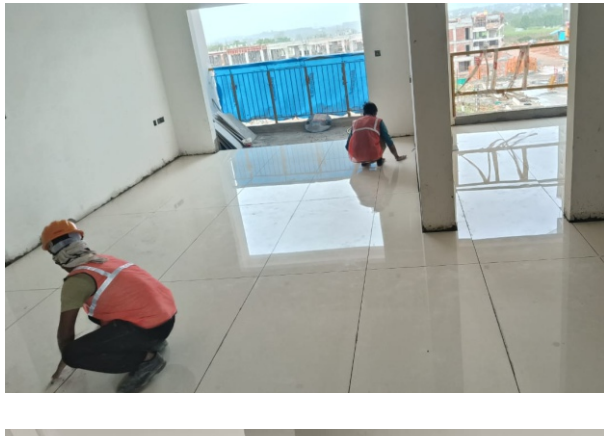
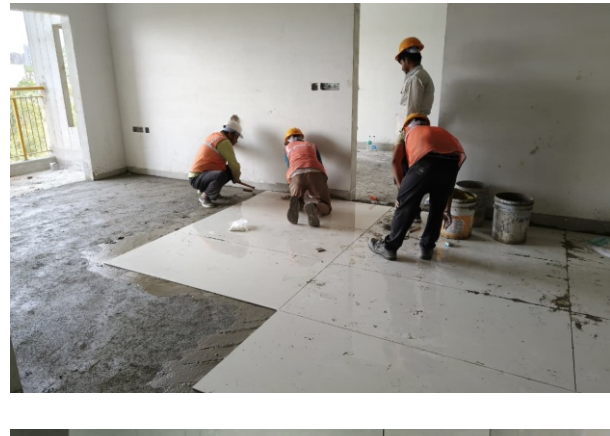
### TOWER D (Presidential Tower)

- 2nd Floor slab completed



Construction yet to begin for **CLUBHOUSE**

## Compliance, Maintenance & Protection



#### Tiling & Protection

Post laying, the tiles are first covered with 250-micron laminate sheets. Then, an overlay of 3mm Sunboard Protection sheets are spread across to seal them. These protective layers are retained until completion of all finishes, as a safeguard against scratches, damages, chipping and any kind of spillages.



#### Plumbing lines pressure testing



#### 2nd Coat Coarse putty Application



#### Fire fighting piping

## Recharge Wells Update



#### Recharge Well #4: excavation in progress



#### Recharge Well #5 : work in progress



#### Recharge Well #5 : work in progress

## CURRENT PRICE STRUCTURE @ Disha Pursuit of the Elements

Premium & Presidential Homes : ₹10,499/- (per sq. ft.) + 5% GST

Millennium Homes : ₹69,00,000/- (all inclusive)

Villas: **SOLD OUT**

**PLEASE NOTE:** We are working on the customer portal.

Watch out for email updates.

**WE WILL BE BACK WITH NEW UPDATES IN JANUARY 2026**