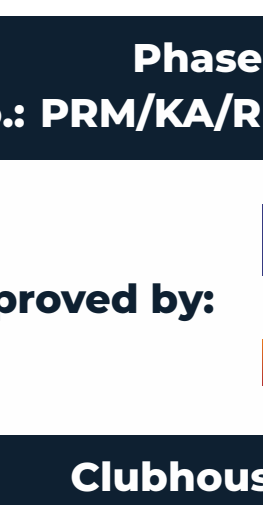


come home
to a
Happy New Year 2026



DISHA PURSUIT OF THE ELEMENTS

PROJECT STATUS

Phase 1 RERA Approved

RERA No.: PRM/KA/RERA/1251/308/PR/280324/006756

Project Approved by:

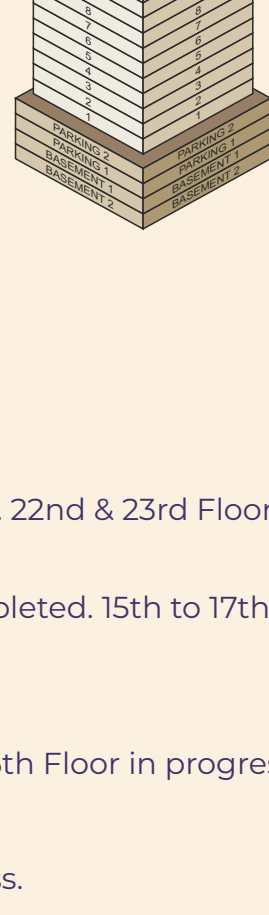


Clubhouse Approval Received

ONSITE STATUS

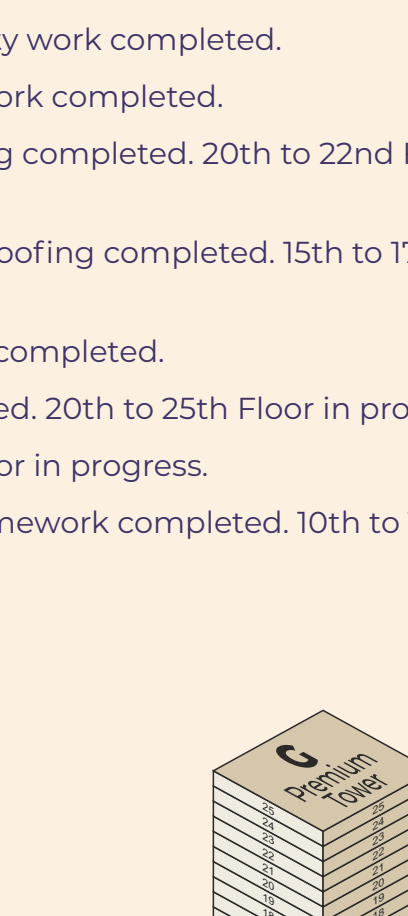
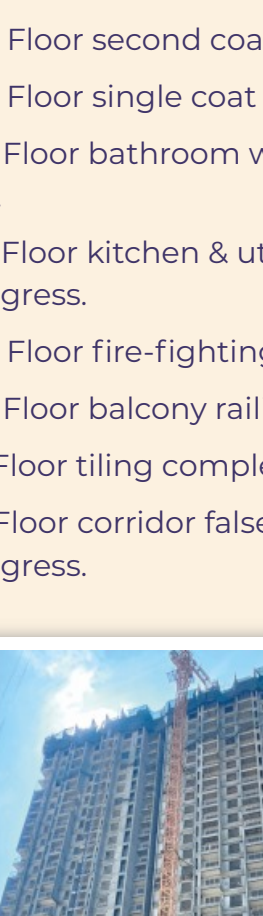
TOWER E (Presidential Tower)

- Terrace parapet wall & pergola work in progress.
- Basement 1: VDF flooring 50% completed.
- GI wire-pulling 100% completed.
- 2nd to 27th Floor coarse putty work completed. 28th Floor in progress.
- 2nd to 26th Floor bathroom waterproofing completed.
- 2nd to 16th Floor kitchen & utility waterproofing completed.
- 2nd to 28th Floor fire-fighting pipe work completed.
- 2nd to 26th Floor balcony railings completed.
- 2nd to 6th Floor tiling completed. 7th Floor in progress.
- 2nd to 4th Floor granite coping for balcony ledge completed. 5th Floor in progress.
- 2nd to 10th Floor corridor false-ceiling framework completed



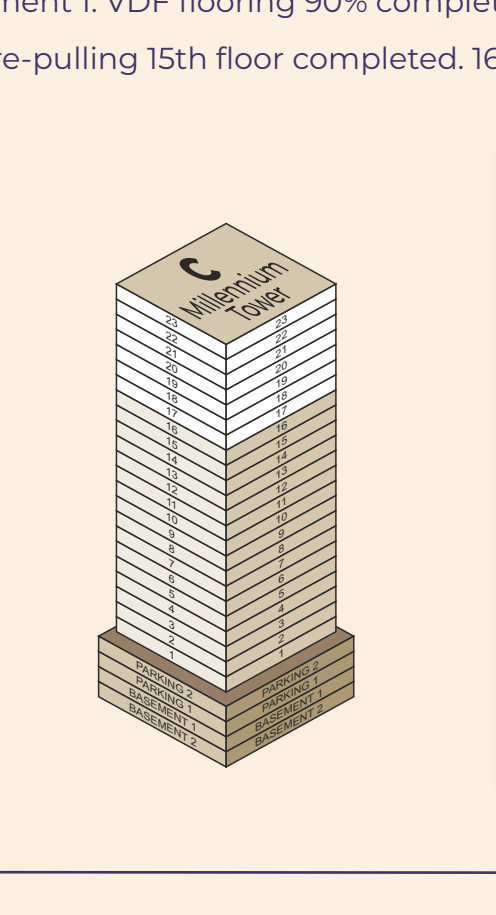
TOWER F (Premium Tower)

- Terrace parapet wall & pergola work in progress.
- 2nd to 23rd Floor coarse putty work completed.
- 2nd to 21st Floor bathroom waterproofing completed. 22nd & 23rd Floor in progress.
- 2nd to 14th Floor kitchen & utility waterproofing completed. 15th to 17th Floor in progress.
- 2nd to 23rd Floor fire-fighting pipe work completed.
- 2nd to 15th Floor balcony railing completed. 16th to 25th Floor in progress.
- 2nd to 25th Floor GI wire-pulling completed.
- 2nd to 5th Floor tiling completed. 6th Floor in progress.
- 2nd to 4th Floor granite coping for balcony ledge completed. 5th Floor in progress.
- 2nd Floor corridor false-ceiling framework in progress.



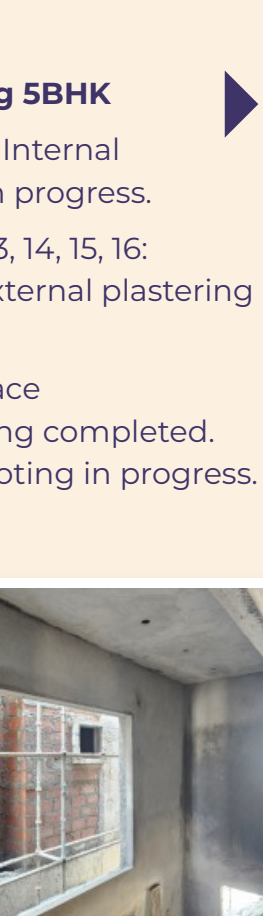
TOWER G (Premium Tower)

- Terrace parapet wall & pergola work in progress.
- GI wire-pulling 100% completed.
- 2nd to 23rd Floor second coat coarse putty work completed.
- 2nd to 23rd Floor single coat fine putty work completed.
- 2nd to 19th Floor bathroom waterproofing completed. 20th to 22nd Floor in progress.
- 2nd to 15th Floor kitchen & utility waterproofing completed. 15th to 17th Floor in progress.
- 2nd to 23rd Floor fire-fighting pipe work completed.
- 2nd to 19th Floor balcony railing completed. 20th to 25th Floor in progress.
- 2nd to 5th Floor tiling completed. 6th Floor in progress.
- 2nd to 9th Floor corridor false-ceiling framework completed. 10th to 12th Floor in progress.



TOWER C (Millennium Tower)

- 18th Floor slab completed.
- Basement 1: VDF flooring 90% completed.
- GI wire-pulling 15th floor completed. 16th floor in progress.



VILLAS

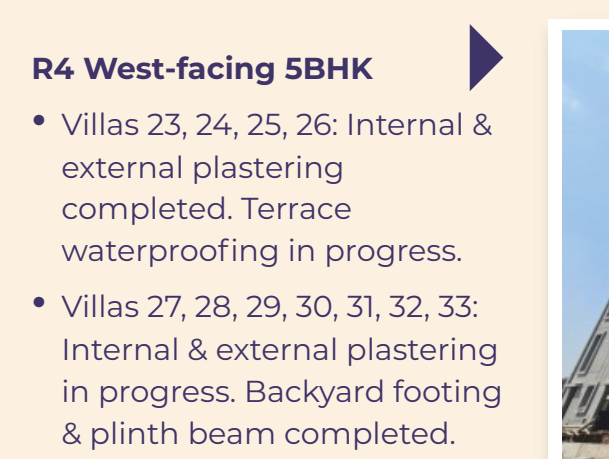


R1 East-facing 4 BHK

- Villa 1: 1st Floor slab completed.
- Villa 2: 2nd Floor slab completed.
- Villas 3, 4, 5, 6, 7, 8: Brick work completed.
- Villa 8: Marking for electrical conduiting completed. Backyard footing in progress.

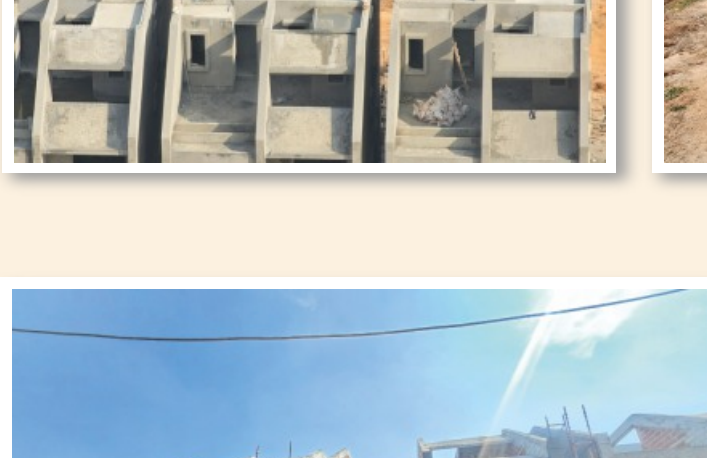
R2 East-facing 5BHK

- Villas 9 & 10: Internal plastering in progress.
- Villas 11, 12, 13, 14, 15, 16: Internal & external plastering in progress.
- Villa 17: Terrace waterproofing completed. Backyard footing in progress.



R3 North-facing 5BHK

- Villa 18: Structure work 100% completed. Ground Floor work in progress.
- Villas 19, 20, 21, 22: Structure work 100% completed. Backyard footing completed.



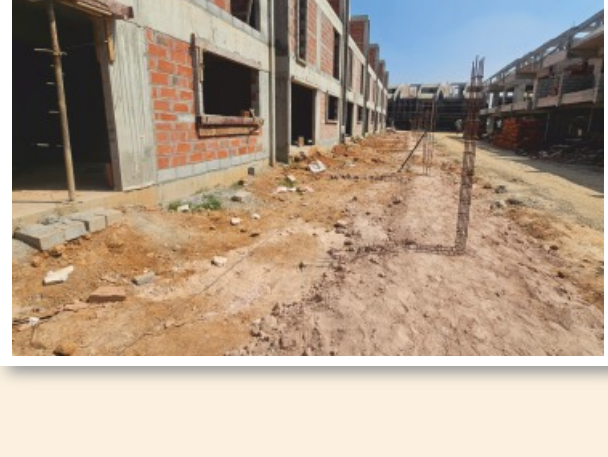
R4 West-facing 5BHK

- Villas 23, 24, 25, 26: Internal & external plastering completed. Terrace waterproofing in progress.
- Villas 27, 28, 29, 30, 31, 32, 33: Internal & external plastering in progress. Backyard footing & plinth beam completed.



R5 West-facing 4BHK

- Villas 34, 35, 36: Internal & external plastering in progress.
- Villa 37, 38, 39, 40: Electrical conduiting work & modular box-leveling in progress.
- Villas 41 & 42: Brick work completed. Backyard footing & plinth beam completed.



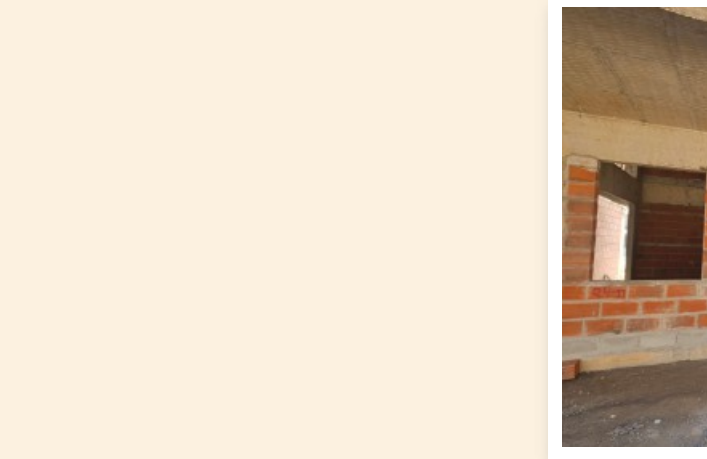
R6 North-facing 4BHK

- Villas 43, 44, 45, 46: Brick work completed.
- Villas 47, 48, 49: Brick work in progress. Backyard footing & pedestal work completed.



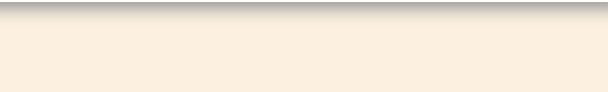
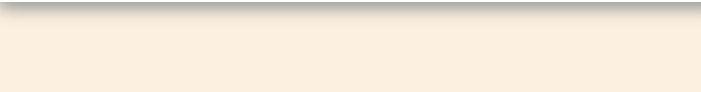
R7 North-facing 4BHK

- Villas 50, 51, 52, 53: Brick work in progress.
- Villas 54 & 55: Structure work 100% completed. Backyard footing & pedestal completed.



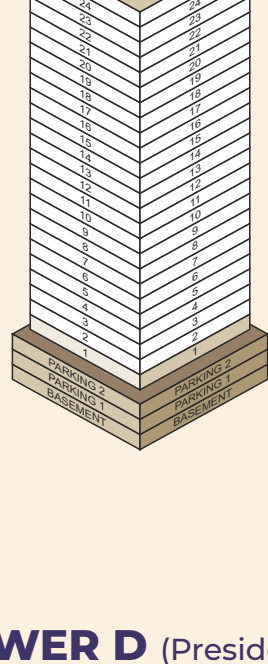
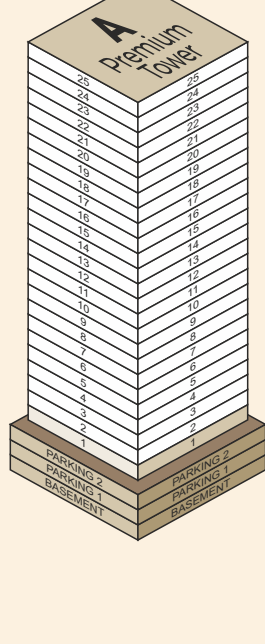
R8 North-facing 5BHK

- Villa 56: Brick work in progress. Backyard footing & pedestal completed.
- Villas 57, 58, 59, 60: Brick work completed.



TOWER A (Premium Tower)

- 2nd Floor slab completed.



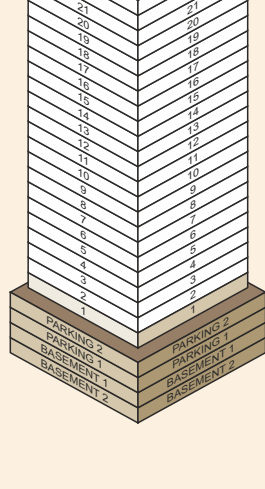
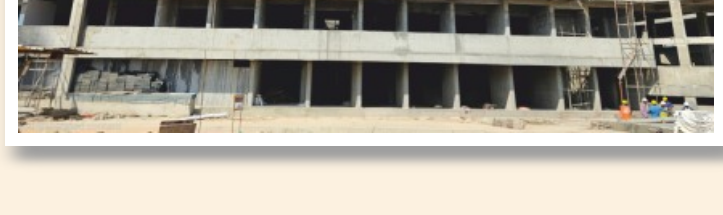
TOWER B (Premium Tower)

- 2nd Floor slab completed.



TOWER D (Presidential Tower)

- 2nd Floor slab completed.



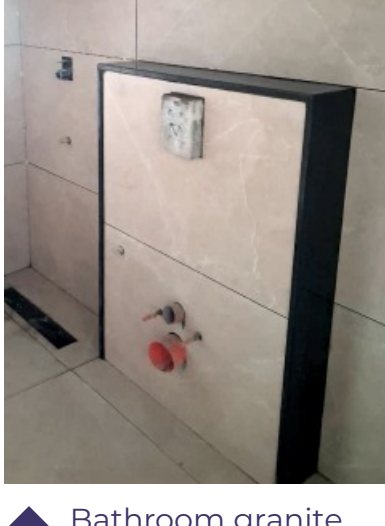
Construction yet to begin for **CLUBHOUSE**

UTILITIES

TOWERS



Flush tank installation



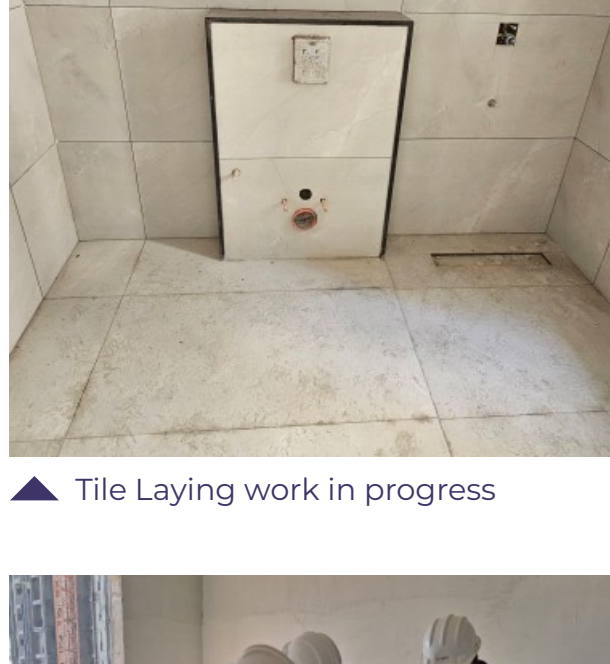
Bathroom granite ledge work



Pressure testing for pipelines



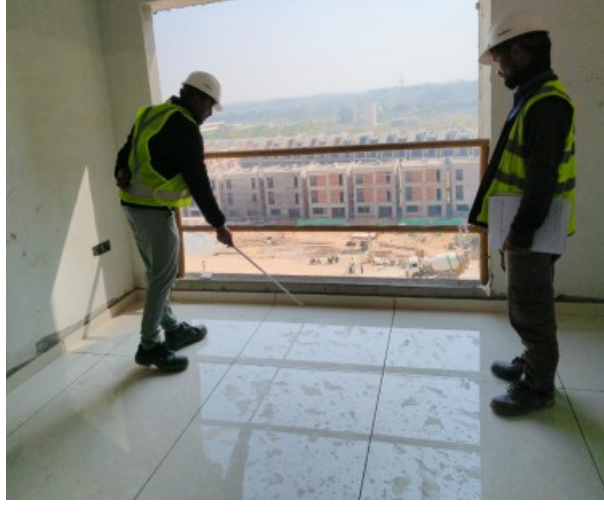
Terrace parapet & pergola work in progress



Tile Laying work in progress



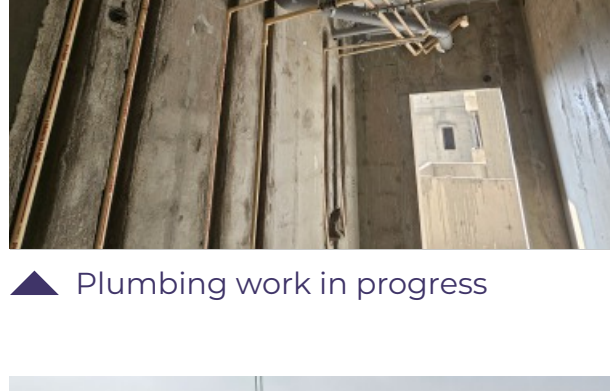
Quality checking for tiling



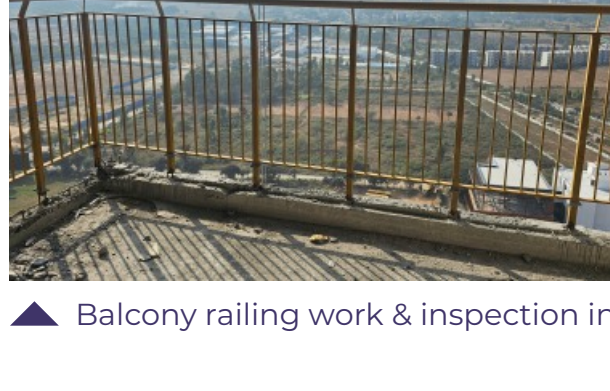
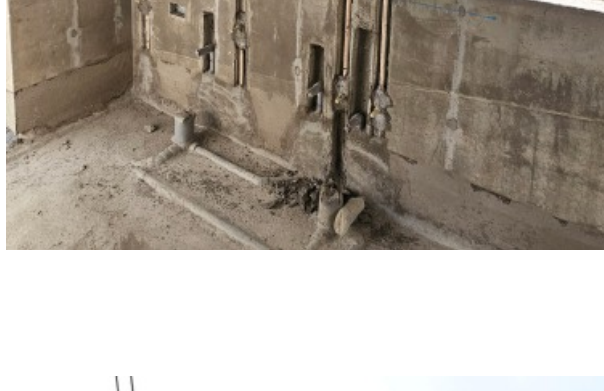
Corridor false-ceiling framework



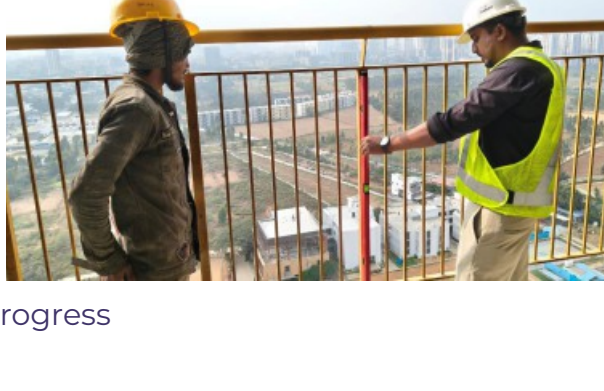
Wall putty work in progress



Plumbing work in progress



Balcony railing work & inspection in progress



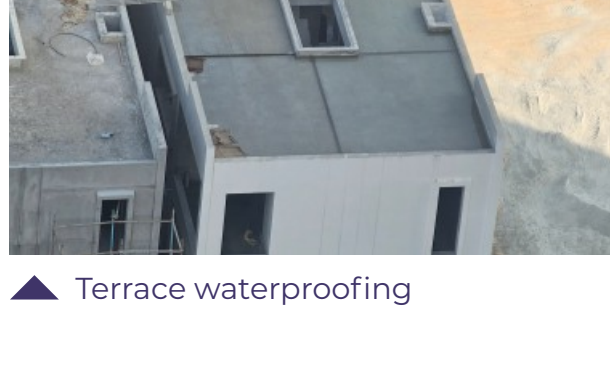
VILLAS



Internal plastering



External plastering



Terrace waterproofing



Electrical conduiting work

COMMON UTILITIES



Recharge Wells No. 4 & No. 5: Structure work 100% completed.

CURRENT PRICE STRUCTURE

@ Disha Pursuit of the Elements

Premium & Presidential Homes : ₹10,499/- (per sq. ft.) + 5% GST

Millennium Homes : ₹69,00,000/- (all inclusive)

Villas: **SOLD OUT**

Watch out for email updates on the Customer Portal

WE WILL BE BACK WITH NEW UPDATES IN APRIL 2026