

An aerial photograph of a white Sunseeker Predator 84 yacht sailing on a deep blue ocean. The yacht is moving from the bottom left towards the top right, leaving a white wake. The name 'P'OCEAN' is visible on the stern. The yacht features a large cockpit with a table and chairs, a helm station with a radar dome, and a cabin with large windows. A red flag is flying from the bow.

P'OCEAN | Sunseeker Predator 84 | 2009 | 26.48 M
€1,750,000 (Incl.VAT)

YACHT MASTERS
MONACO

SUNSEKER PREDATOR 84 | 2009

SPECIFICATIONS

Length	26.48m
Width	6.41m
Draft	1.50m
Dry Weight	74,690kg
Cruising / Max. speed	24 kts / 34 kts
Range	350nm @ 26 kts

Flag	JERSEY
Location	Monaco
Class	CE
Exterior Design	Sunseeker Yachts
Interior Design	Sunseeker Yachts
Construction	GRP

Propulsion	Shaft Drive
Crew	3
Passengers	Sleeping 8 Max 12
Cabins/Heads	4 / 4
Engines / Hours	2x MTU 16V 2000 M93 (2,400 HP)
Generators / Hours	tbc

MAINTENANCE & REFIT OVERVIEW



**Jet Ski and Seabob NOT included in the sale

- Replaced Teak (2023)
- Extensive interior and upholstery refit (2021)*
- Very well maintained by current owner
- 24 Knots Cruising speed & Top Speed of 34 Knots
- Large garage for full size tender, jet-ski and Seabobs**
- Bow and Stern Thrusters

REFIT DETAILS 2024/2025

- Antifouling, Propspeed & Anode Replacement
- Hull & Super Structure Polish
- Inspection & Service of Windlasses, Safety Equipment, Tender & Autopilot
- Inspection & Service of Engines, Generators (End of June 2025)
- New Stabiliser Control Unit (End of June 2025)
- Interior Deep Clean (End of June 2025)

More information on request.

*REFIT DETAILS 2021

- **Main Salon:** Removed Dining Table to expand the lounge. New carpets
- **Outdoor Upholstery:** All new exterior upholstery (foam & fabric). New leather seats on Fly Bridge.
- **Outdoor Carpentry:** Replaced bow and stern tables, incl. stainless steel inlays. New dining chairs.
- **Domestic Appliances:** Replaced icemaker & fridge in aft lounge.

More information on request.

SUNSEKER PREDATOR 84 | 2009

EXTERIOR CRUISING



High Speed Cruising at 22kts



Cruising with Sun Awnings at up to 12 kts



Comfortable & sheltered al Fresco Cruising

SUNSEKER PREDATOR 84 | 2009

EXTERIOR PROFILE



Vast amounts of Lounge Space



Large Garage for Tenders & Toys

Sleek and Sporty Lines

SUNSEKER PREDATOR 84 | 2009

DECK AREAS



Walk around Main Deck providing easy access to the Bow Lounge



Aft Sunpad and Alfresco Dining for up to 8 Guests



Fly Bridge and Retractable Salon Roof

SUNSEKER PREDATOR 84 | 2009

AFT, FLY AND BOW SUNPADS



Aft Sunpad with easy access to the submergible swimming platform]



Convertible Bow Lounge

SUNSEKER PREDATOR 84 | 2009

EXTERNAL LOUNGE AREAS



Aft Lounge



AI Fresco Dining



Fly Bridge with Sunpad



Full Size Convertible Bow Lounge with lowering Table

SUNSEKER PREDATOR 84 | 2009

MAIN SALON



Main Salon

SUNSEKER PREDATOR 84 | 2009

MAIN SALON



Main Salon - Lounge



Main Salon - Lose Furniture



Main Salon - Overview

SUNSEKER PREDATOR 84 | 2009

MASTER CABIN



Master Cabin with Walk in Wardrobe and Ensuite Bathroom

Master Bedroom - Vanity Station

SUNSEKER PREDATOR 84 | 2009

VIP CABIN



VIP Bow Cabin



Ensuite Bathroom



[Description]

SUNSEKER PREDATOR 84 | 2009

TWIN CABINS



Two Mirrored Twin Cabins

Ensuite Bathroom for each Twin Room

SUNSEKER PREDATOR 84 | 2009

AFT DECK AL FRESCO DINING AREA



Aft Al Fresco Dining for up to 8 Guests

SUNSEKER PREDATOR 84 | 2009

GALLEY & CREW MESS



Integrated Crew Mess



Large Double Door Fridge

Main Galley situated in the Crew Area

SUNSEKER PREDATOR 84 | 2009

TENDER GARAGE



Easy Garage Access with Twin Staircase

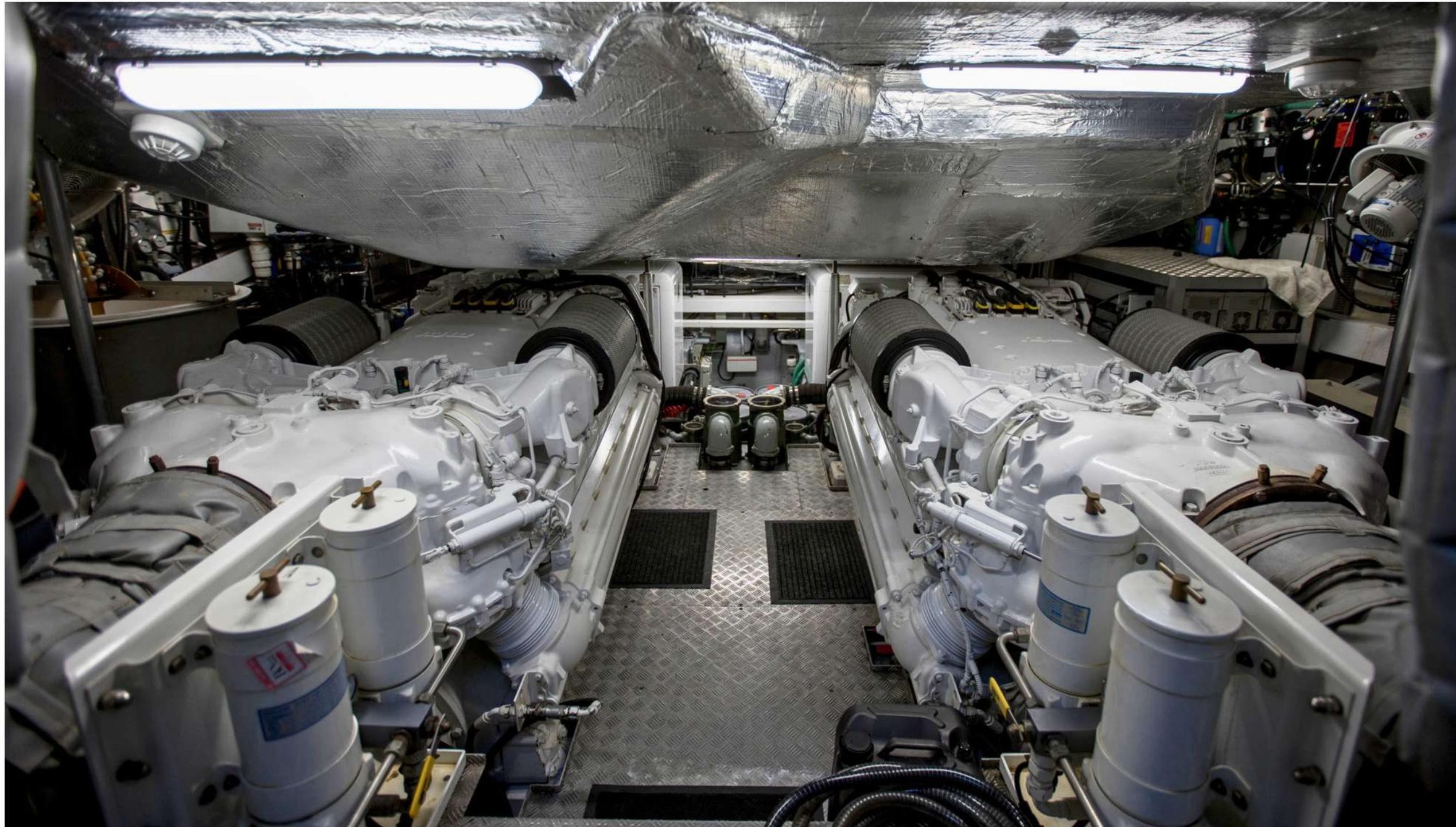


Hydraulic Swimming Platform

Large Garage for a Williams Jet Tender, a full size Jet Ski and two SeaBobs

SUNSEKER PREDATOR 84 | 2009

ENGINE ROOM



SUNSEKER PREDATOR 84 | 2009

MAIN HELM STATION



SUNSEKER PREDATOR 84 | 2009

ARIAL VIEW AND TOYS



SUNSEKER PREDATOR 84 | 2009

DETAILS



SUNSEKER PREDATOR 84 | 2009

EXPERIENCE P'OCEAN



Watch video on YouTube

Error 153

Video player configuration error



<https://youtu.be/F2UJb4eNAIE>

YACHT MASTERS
MONACO

DETAILED SPECS

Quick Specs

Shipyard	Sunseeker
Model	Predator 84
Year	2009
Flag	Jersey
Hull Color	White
LoA	26.48m
LwL	19.86m
Beam	6.41m
Gross Tonnage	74 GT
Max. Speed	37 kts
Cruise Speed	26 Kts
Range	300 Nm @ 26 Kts / 580 Nm @ 12 Kts
Fuel Capacity	7500 L
Fresh Water Capacity	1200 L
Black Water Capacity	900 L

Accommodation

Guests	8 in 4 Cabins
Crew	3 in 2 Cabins

Engines & Machinery

Engines	2x MTU 16V 2000 (1790 Kw) @ 2450 RPM
Engine Hours	2016h each
Fuel Type	Diesel
Air Condition	Marineair System
Bowthruster	TRAC
Sternthruster	TRAC
Generators	2x 50Hz 28KVA Kohler (Stb 5419h / Port 5539h)
Oil Change System	Reverse Pump
Watermaker	Idromar 1MC3J

DETAILED SPECS

Galley

Stove	NEFF Induction Hob (4 zones)
Oven	Bosch
Microwave	Sharp
Dishwascher	Bosch SRV4
Washing Machine	Thomson
Dryer	Thomson

Entertainment

Saloon	Wincooler - Vittrifico
	TV Samsung - 110cm
	BOSE Sound System
Aft Deck	Mini Fridge - Dometic
	Ice Maker - Raritan
Sun Deck	BOSE Soundsystem
Twin Cabins	TV Sharp (44cm)
VIP Cabin	TV Panasonic (100cm)
Master Cabin	TV Panasonic (107cm)

Other Machinery

Fin Stabilizers	TRAC Digital Stabilizer by American Bow Thruster
Anchorwindlass - Lewmar	2
Ancho Chain - Stainless Steel 120	2
Passarelle	Benenzoni Hydraulig Gangway
Hydraulic Swimming Platform	1
Search Light HR1012	2

Navigation

Magnetic Compass	1
Autopilot	Simrad
Speed & Depth	Raymarine
Radar	Raymarine
Chartplotter	Raymarine

UPPER DECK LAYOUT



Main Deck

LOWER DECK LAYOUT





YOUR BROKER

STEVE L.R. KAMER

SALES BROKER

sk@yachtmastersmonaco.com

16 Quai Jean-Charles Rey - MC 98000 Monaco

T +377 99 99 22 29 M +33 6 43 91 54 80

www.yachtmastersmonaco.com

Disclaimer: As yacht brokers, we provide the information in this brochure for general guidance only. While we strive for accuracy, the details regarding availability, specifications, and pricing are subject to change and depend on negotiations with yacht owners, among other considerations. We do not make any warranties, expressed or implied, concerning the completeness, reliability, or suitability of the information provided. The yacht specifications and features may vary, and all images are for illustrative purposes only. This brochure does not constitute a contractual offer. All terms must be confirmed in writing. Actual terms, availability, and conditions may vary. Prospective buyers are advised to conduct their own due diligence and seek professional advice before making any decisions based on this information.