



**It's time
to have your
Dream Home**



Estela is a spanish word for leaving a trace and that is exactly what we are trying to achieve.

At Estela we do things differently, building each house as if it were our own and carefully selecting every detail to make sure our customers are proud to call their new place home. We include a lot of upgrades as part of our standard offering to make sure you have a better home-buying experience. A beautiful house without the hidden costs, that is what we are about.





Our mission

Estela is a homebuilding company like no other. We are on a mission to build homes that challenge the status quo set by traditional builders. Our lifestyles have drastically changed and there is no reason why our homes should not be better suited to meet today's needs. We are a customer focused homebuilding company centered around design, functionality and affordability.





Location

Palm Coast, FL

Palm Coast is a popular coastal town located in Flagler County, known for its beautiful beaches, scenic waterfront, and outdoor recreational activities.

The town offers a variety of amenities, including restaurants, shops, and cultural events.

Palm Coast is also home to several parks and nature preserves, such as the Bulow Creek State Park and the Palm Coast Nature Trail.

Come visit us our Model Home:

159 Birds of Paradise,
Palm Coast FL 32137
United States



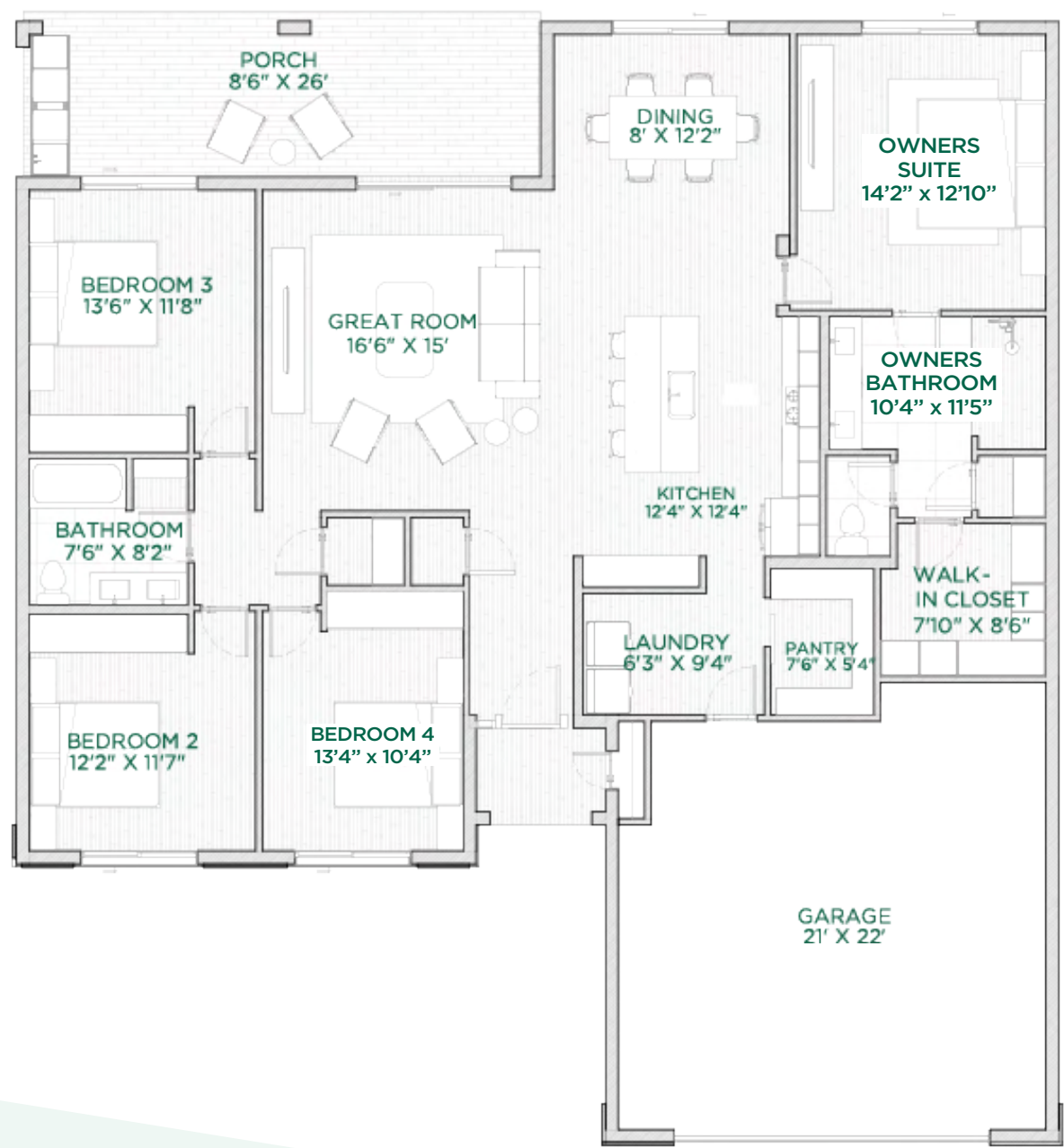


Heron Model

Heron



Floor Plan | Heron



Area Tabulation

LIVING	1873
GARAGE	524
ENTRY PORCH	33
COVERED REAR PORCH	216
TOTAL COVERED	2646



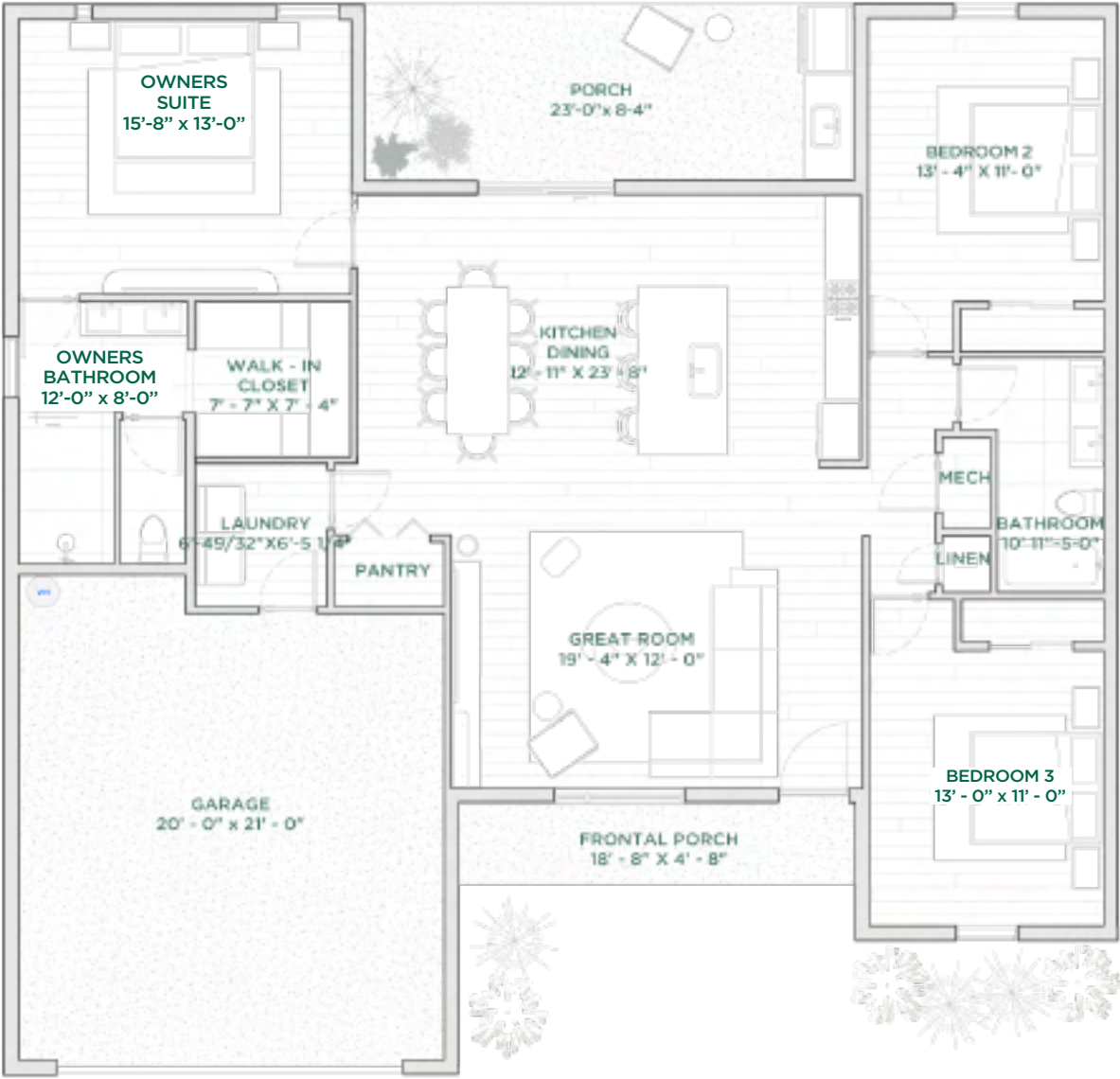


Bimini Model

bimini



Floor Plan | Bimini



Area Tabulation

LIVING	1655
GARAGE	473
ENTRY PORCH	93
COVERED REAR PORCH	192
TOTAL COVERED	2413





Exuma Model

Exuma



Floor Plan | Exuma



Area Tabulation

LIVING	2337
GARAGE	503
ENTRY PORCH	98
COVERED REAR PORCH	161
TOTAL COVERED	3099



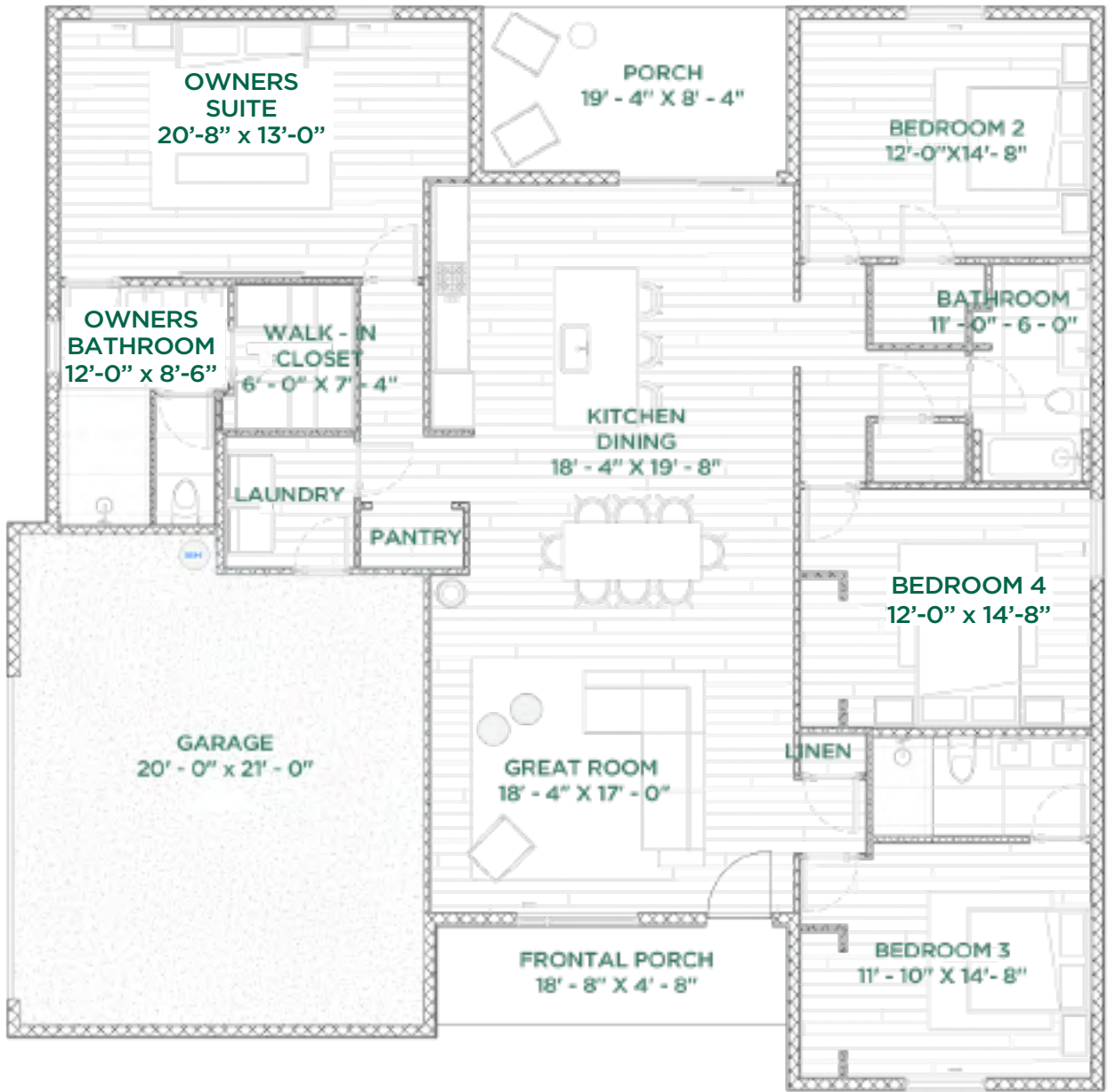


Abaco Model

Abaco



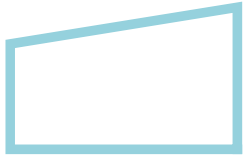
Floor Plan | Abaco



Area Tabulation

LIVING	2124
GARAGE	516
ENTRY PORCH	88
COVERED REAR PORCH	128
TOTAL COVERED	2856





Design, Functionality, Affordability.

We believe home designs have remained largely unchanged while customer preferences, habits and needs have rapidly evolved. In order to exceed our customer's expectations when purchasing their home we have assembled a team with years of experience that allows us to align our efforts from start to finish





Estela's Locations

Estela is actively building in the **Palm Coast and Ocala markets**. We currently have availability of quick move in homes but also offer buyers the opportunity to select from a list of potential lots, features and colors.

Please ask our sales manager for an updated inventory and price list:

(386) 500-2661

contactus@estelaliving.com





estelaliving.com

**It's time
to have your
Dream Home**

Contact

2601 S. Bayshore Dr 18th Floor,
Coconut Grove, FL 33133
United States

(386) 500-2661
contactus@estelaliving.com

ESTELA LIVING CANNOT BE RELIED UPON AS CORRECTLY STATING THE REPRESENTATIONS OF THE DEVELOPER. FOR CORRECT REPRESENTATIONS, MAKE REFERENCE TO THE BROCHURE AND TO THE DOCUMENTS REQUIRED BY SECTION 718.503, FLORIDA STATUTES, TO BE FURNISHED BY A DEVELOPER TO A BUYER OR LESSEE. FEATURES, AMENITIES, FLOOR PLANS, ELEVATIONS, AND DESIGNS VARY AND ARE SUBJECT TO CHANGES OR SUBSTITUTION WITHOUT NOTICE. ITEMS SHOWN ARE ARTIST'S RENDERINGS AND MAY CONTAIN OPTIONS THAT ARE NOT STANDARD ON ALL MODELS OR NOT INCLUDED IN THE PURCHASE PRICE. AVAILABILITY MAY VARY. PLEASE SEE YOUR NEW COMMUNITY SPECIALISTS AND/OR HOME PURCHASE AGREEMENT FOR ACTUAL INCLUDED FEATURES. PRICES DO NOT INCLUDE CLOSING COSTS AND OTHER FEES TO BE PAID BY BUYER (INCLUDING A BUILDER FEE AS DESCRIBED IN THE PURCHASE AGREEMENT) AND ARE SUBJECT TO CHANGE WITHOUT NOTICE. REAL ESTATE AGENTS/BROKERS REPRESENTING THE BUYER, IF ANY, MUST ACCOMPANY A PROSPECTIVE BUYER DURING THE BUYER'S INITIAL TOUR TO BE ELIGIBLE FOR ANY OFFERED COMMISSION. THIS IS NOT AN OFFER IN STATES WHERE PRIOR REGISTRATION IS REQUIRED. VOID WHERE PROHIBITED BY LAW. 2023 ESTELA LIVING. ALL RIGHTS RESERVED.