



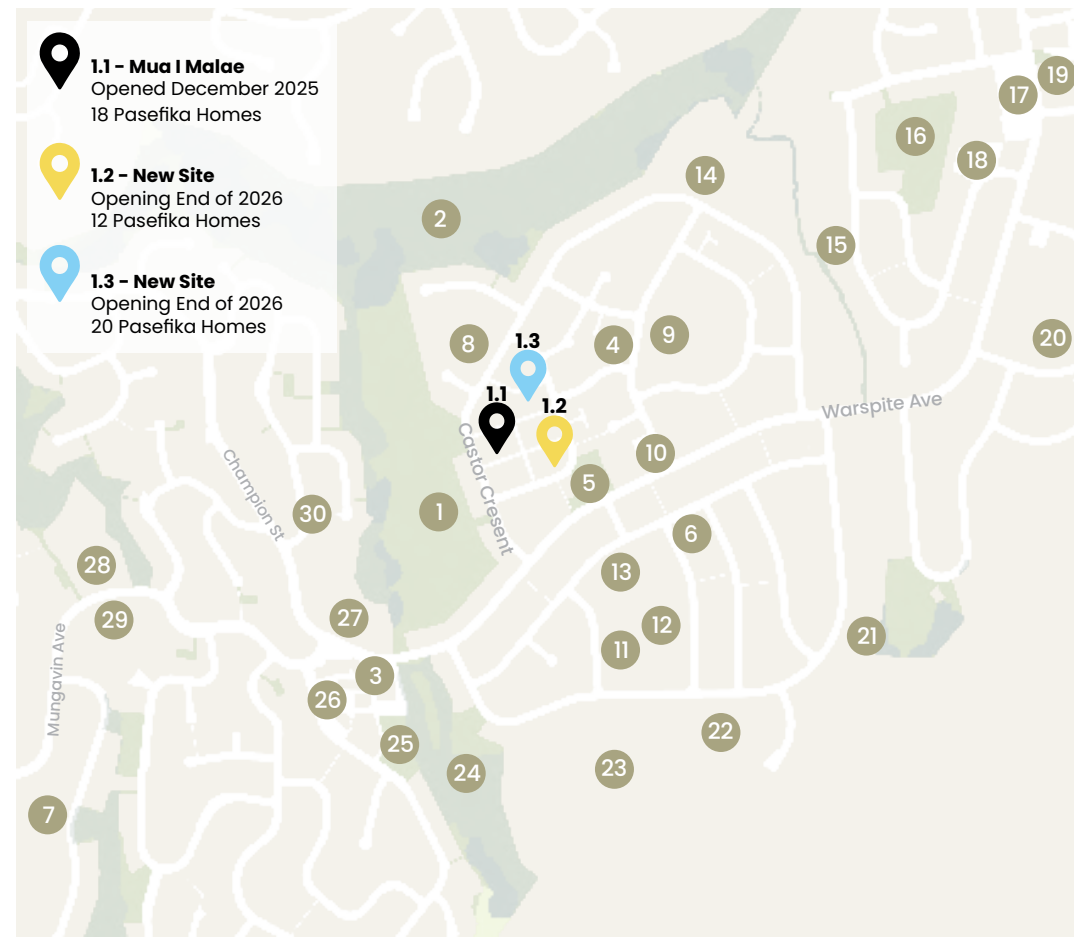
# Our Whare Our Fale

**Our Whare Our Fale** is a bold new way of thinking about how we live as Pasefika people in Aotearoa. We're reimagining the Pacific village as we build up to **300 affordable homes** in eastern Porirua over the next ten years. These homes and the shared spaces around them are designed by Pasefika, for Pasefika. That means they reflect who we are, how we live, and what's important to our families, like having space for grandparents, parents, and kids under one roof, and staying connected with our neighbours and wider community.

We know home ownership can be tough, so we're offering different ways to help Pasefika families get into your own homes, including shared home ownership options.

**Our Whare Our Fale** is made possible because of a strong and respectful partnership between the **Central Pacific Collective** and **Ngāti Toa Rangatira**, the mana whenua of this area. The partnership is built on shared values, kinship ties, and a vision for a better, more inclusive future for all our whānau.





- 1.1 - Mua I Malae**  
Opened December 2025  
18 Pasefika Homes
- 1.2 - New Site**  
Opening End of 2026  
12 Pasefika Homes
- 1.3 - New Site**  
Opening End of 2026  
20 Pasefika Homes

## Location

Your new home will be in the heart of Cannons Creek, right between Porirua City Centre and Waitangirua Mall. It's a perfect spot where the Pasefika community already thrives. Schools, churches, parks, and shops are all nearby, everything your aiga needs is just a short walk away.

This new neighbourhood is more than just houses, it's a place where our culture, families, and friendships can grow stronger. It's a place where you'll feel at home, every single day.

## Amenities

- |  |  |
|--|--|
| 1. Cannons Creek Park                  | 17. Waitangirua Mall   |
| 2. Bothamly Park                       | 18. Natone Park School                                       |
| 3. Cannons Creek Community Center      | 19. Maraeroa Marae   |
| 4. Fantame Shops                       | 20. Corinna School   |
| 5. Matahourua Park                     | 21. O Le Ekalesia a Iesu Keriso o le Au Paia o Aso e Gata Ai |
| 6. Astrolabe St Shops                  | 22. Porirua College  |
| 7. Porirua Park                        | 23. Brandon Intermediate                                     |
| 8. Assembly of God Church of Samoa     | 24. Cannons Creek Lake Reserve                               |
| 9. Russel Kura                         | 25. Cannons Creek Pool                                       |
| 10. Porirua Samoan Assembly of God     | 26. Porirua Union & Community Health Service                 |
| 11. Maraeroa School                    | 27. Cannons Creek School                                     |
| 12. Toru Fetu Tama Iki Kindergarden    | 28. Holy Family Church & School                              |
| 13. Maraeroa Kindergarden              | 29. Windley School   |
| 14. Kanona o Tusitusiga Pa'ia Hall     | 30. Porirua Gospel Chapel                                    |
| 15. Samoan Methodist Church in Porirua |  |
| 16. Natone Park                        |  |



# WELCOME TO Site 1.2

Site 1.2 includes 12 homes specially designed for Pasefika families who often live with grandparents, parents, kids, and sometimes even cousins under one roof.

At the centre is a community fale and malae, a shared space where we can come together for cultural events, family gatherings, and community celebrations, just like back home in the islands.



# Site 1.2

Within the Site 1.2 village, 12 new Pasefika homes have been thoughtfully designed to support modern family living. These homes offer comfort, flexibility, and suitability for multi generational households.

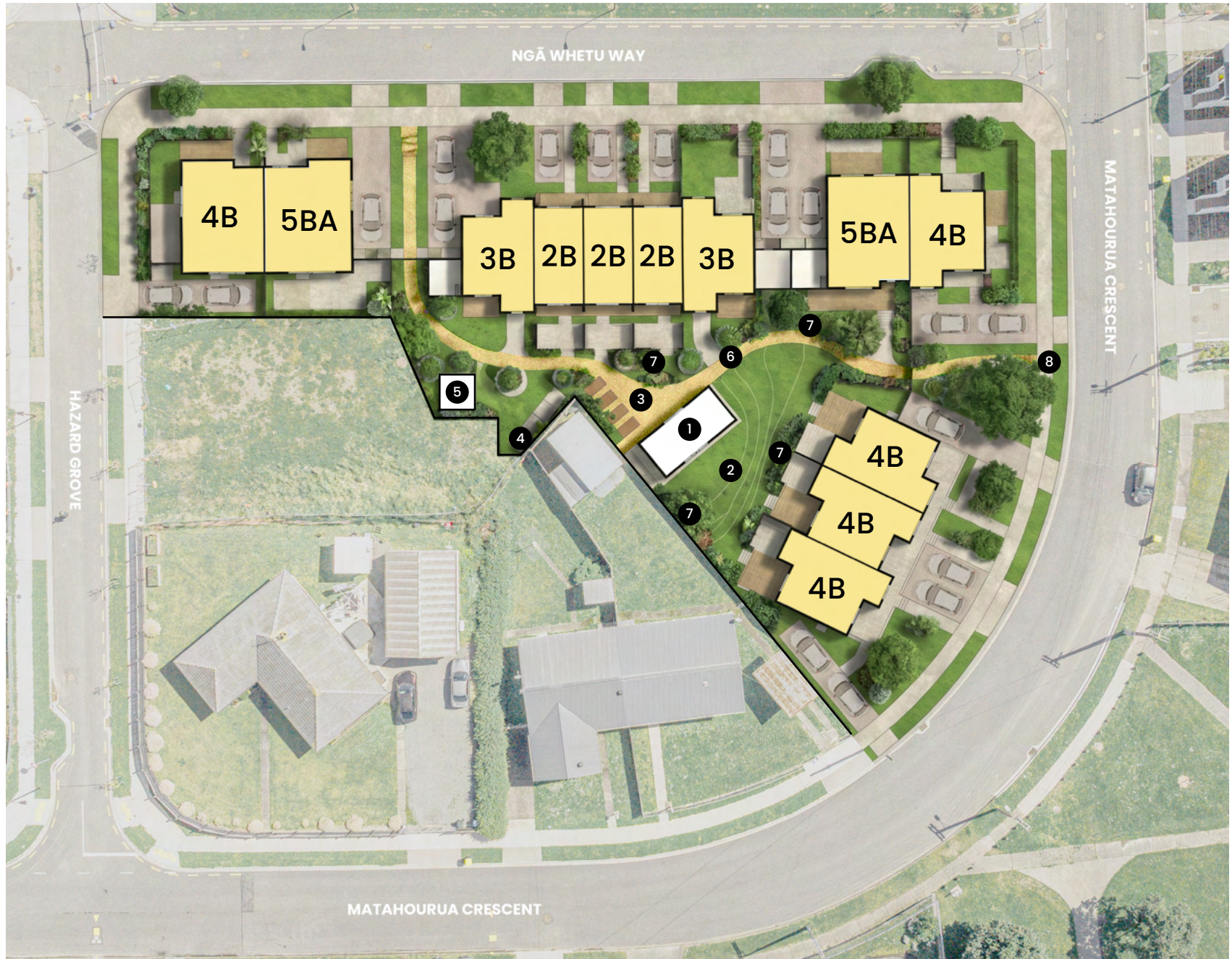
Alongside your new home for your family, you will also have access to a range of shared communal facilities for you, your family, and neighbouring residents to enjoy together.

### Homes in the village:

- 3 x 2B** 2-Bedroom Homes
- 2 x 3B** 3-Bedroom Homes
- 5 x 4B** 4-Bedroom Homes
- 2 x 5BA** 5-Bedroom Homes  
*Accessible Friendly*

### Communal Facilities

1. Shared Fale - Communal Building
2. Malae - Open Green Space
3. Garden Boxes
4. Communal Shed
5. Solar Power Shed
6. Main Common Path
7. Common Gardens
8. Main Entry from Matahourua Cres
9. Secondary Entry from Ngā Whetu Way





## WELCOME TO Site 1.3

Site 1.3 provides 20 homes designed for Pasefika families, reflecting the reality of multi-generational living where grandparents, parents, children, and wider family often share one home.

At the centre of the development is a community fale and malae, offering shared spaces for cultural gatherings, family events, and community celebrations - supporting connection, belonging, and the rhythms of life carried from the islands.



# Site 1.3



Within the Site 1.3 village, 20 new Pasefika homes have been carefully designed to meet the needs of modern family living. These homes support comfort, adaptability, and multi generational households.

In addition to your brand new home to share with your family, you will also have access to a range of communal village facilities for you, your family, and neighbouring residents to enjoy together.

### Homes in the village:

- 2 x 2BA** 2-Bedroom Homes  
*Accessible Friendly*
- 6 x 3B** 3-Bedroom Homes
- 4 x 4B** 4-Bedroom Homes
- 5 x 4BA** 4-Bedroom Homes  
*Accessible Friendly*
- 3 x 5BA** 5-Bedroom Homes  
*Accessible Friendly*

### Communal Facilities

1. Shared Fale - Communal Building
2. Malae - Open Green Space
3. Garden Boxes
4. Communal Shed
5. Playscape Space
6. Solar Power Shed
7. Main Common Path
8. Common Gardens
9. Main Entry from Matahourua Cres
10. Entry from Wairere Way
11. Entry from Karera Grove



# Village Features



We're building homes that care for our families and the planet, inspired by our ancestors. With solar power, water-saving systems, and shared green spaces, everything is guided by Pasefika values - caring for the land, each other, and our future. It's about creating a strong, connected community where culture and knowledge are passed on.



## 01 - Solar for Families: Sun-powered Savings

Our shared solar system helps lower power bills and reduce stress from rising costs. The solar panels are installed and maintained by the Central Pacific Collective for all families to benefit.



## 02 - High-Standard Living: Warm, Dry & Homestar Certified

You'll be living in a high-quality home designed for Pasefika families, warm, healthy, and built to last. With strong insulation, fresh air systems, and smart design, your home stays comfortable year-round. It's a home designed to care for your family, now and into the future.



## 03 - Water Collection: Resilient Living

Our village water systems support resilience, self-sufficiency, and care for one another. A shared emergency water tank by the fale supports the community in times of need.



## 04 - Roof Design: More than a Shelter

Our unique roof design is inspired by the traditional fale. More than just shelter, it reflects our roots, stories, and ancestors. The design also helps keep homes warmer in winter and cooler in summer, combining cultural identity with practical living for modern Pasefika life in Porirua.



## 05 - Shared Fale & Malae: The Heart of the Village

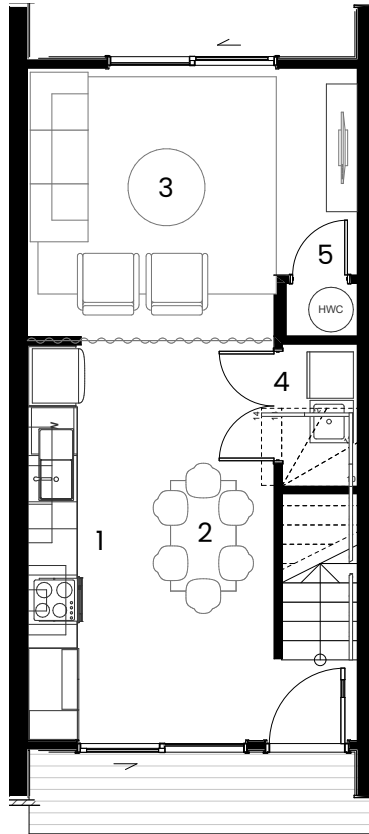
At the heart of the village is a shared fale and malae, a space for culture, learning, health, and connection. Like the village square in the islands, it's a place where families gather, children play, elders are honoured, and community life flourishes.



## 06 - Garden & Nursery: Plant, Nurture, Harvest

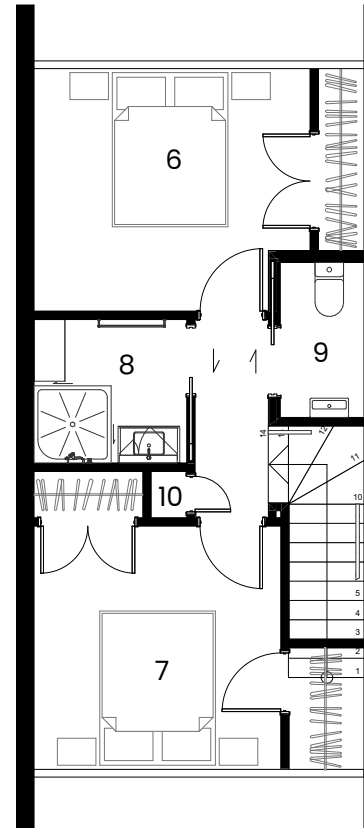
We've created a shared garden and nursery where families can grow food, plant native trees, and learn together. It's about teaching our children to grow, care, and share, while bringing healthy food to our tables, restoring the land, and honouring our ancestors.

# 2 Bedroom 2 Storey



**GROUND FLOOR**

- 1. Kitchen
- 2. Dining
- 3. Living
- 4. Laundry
- 5. HWC

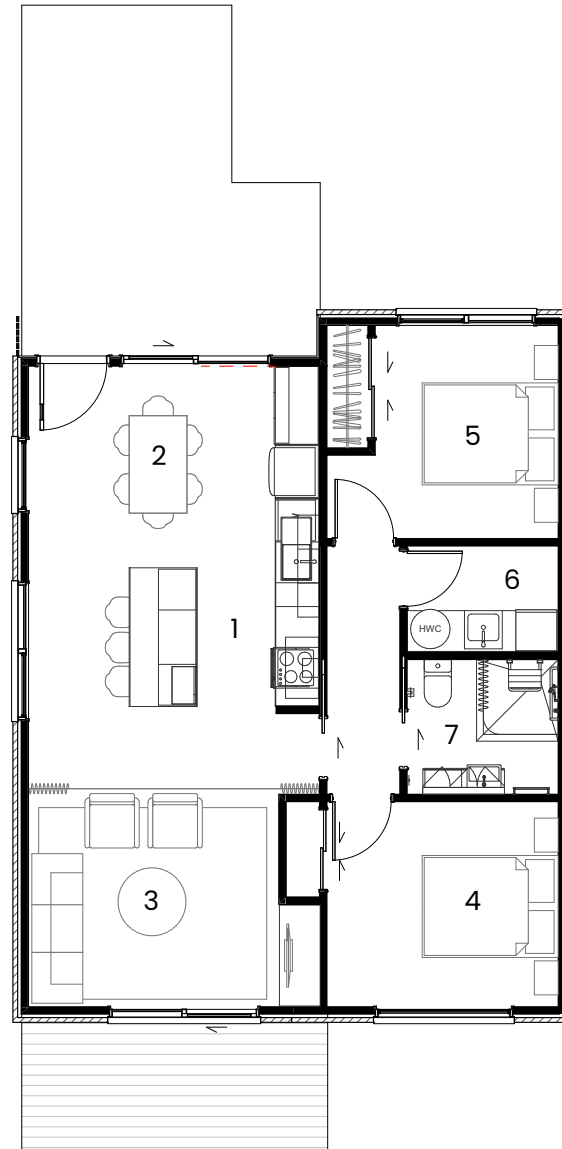


**FIRST FLOOR**

- 6. Bedroom 1 (With Wardrobe)
- 7. Bedroom 2 (With Wardrobe)
- 8. Bathroom
- 9. Bathroom
- 10. Linen Cupboard

# Accessible Friendly

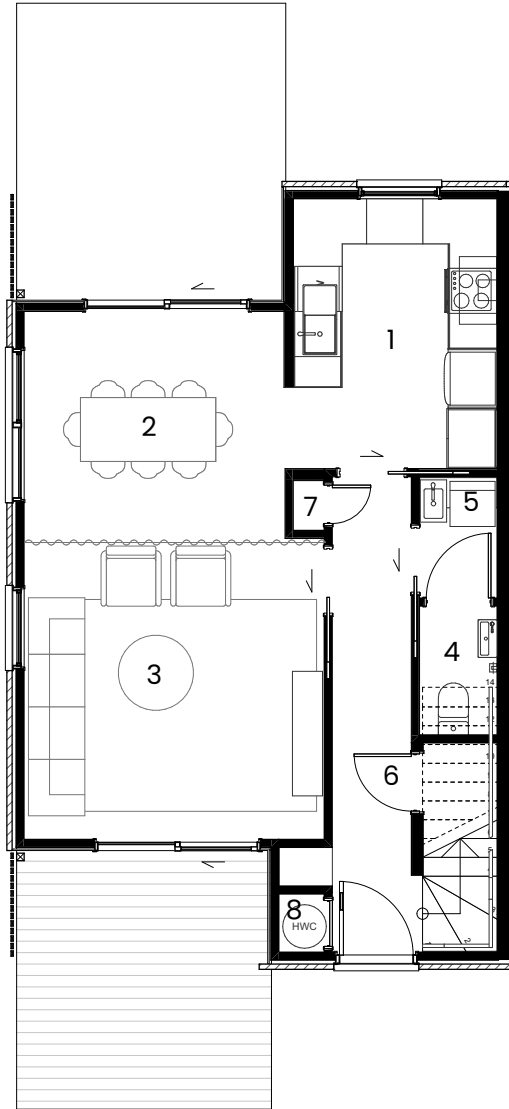
## 2 Bedroom 2 Storey



### GROUND FLOOR

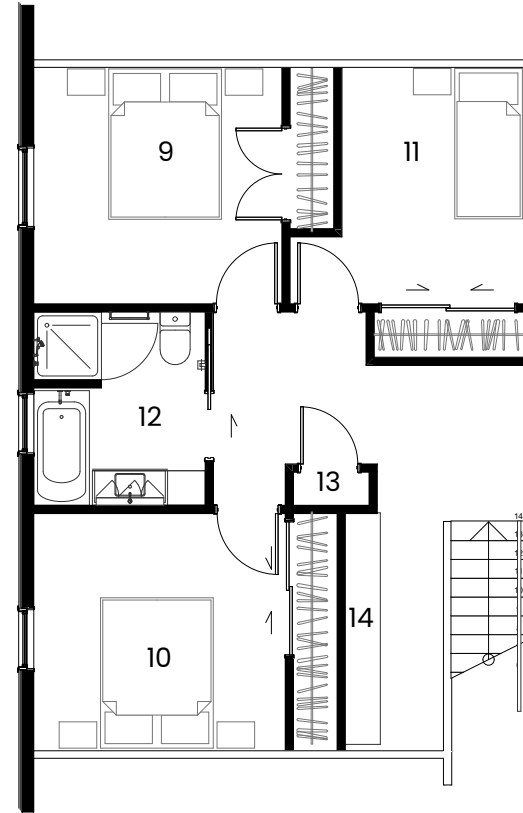
1. Kitchen
2. Dining
3. Living
4. Bedroom 1 (With Wardrobe)
5. Bedroom 2 (With Wardrobe)
6. Laundry with HWC
7. Accessible Friendly Bathroom

# 3 Bedroom 2 Storey



**GROUND FLOOR**

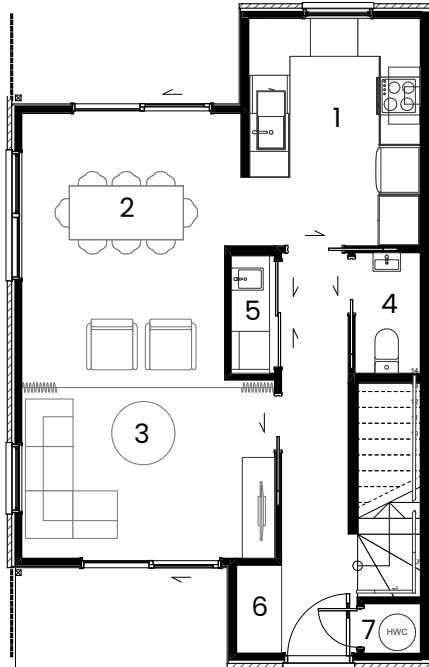
- 1. Kitchen
- 2. Dining
- 3. Living
- 4. Bathroom
- 5. Laundry
- 6. Storage (under stairs)
- 7. Storage
- 8. HWC



**FIRST FLOOR**

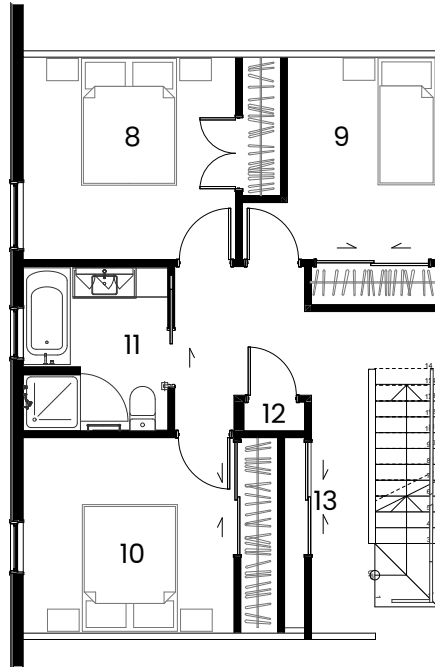
- 9. Bedroom 1 (With Wardrobe)
- 10. Bedroom 2 (With Wardrobe)
- 11. Bedroom 3 (With Wardrobe)
- 12. Main Bathroom
- 13. Linen Cupboard
- 14. Study nook

# 4 Bedroom 3 Storey



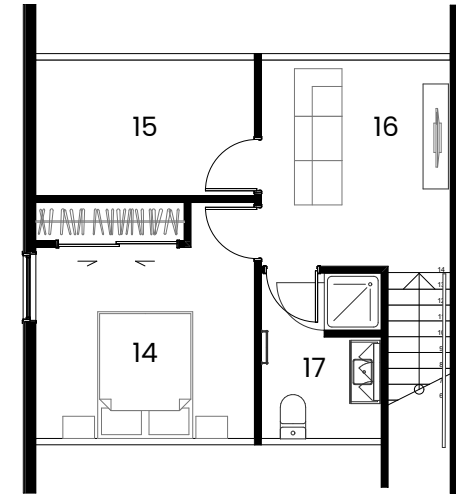
## GROUND FLOOR

- 1. Kitchen
- 2. Dining
- 3. Living
- 4. Bathroom
- 5. Laundry
- 6. Storage
- 7. HWC



## FIRST FLOOR

- 8. Bedroom 1 (With Wardrobe)
- 9. Bedroom 2 (With Wardrobe)
- 10. Bedroom 3 (With Wardrobe)
- 11. Main Bathroom
- 12. Linen Cupboard 1
- 13. Linen Cupboard 2

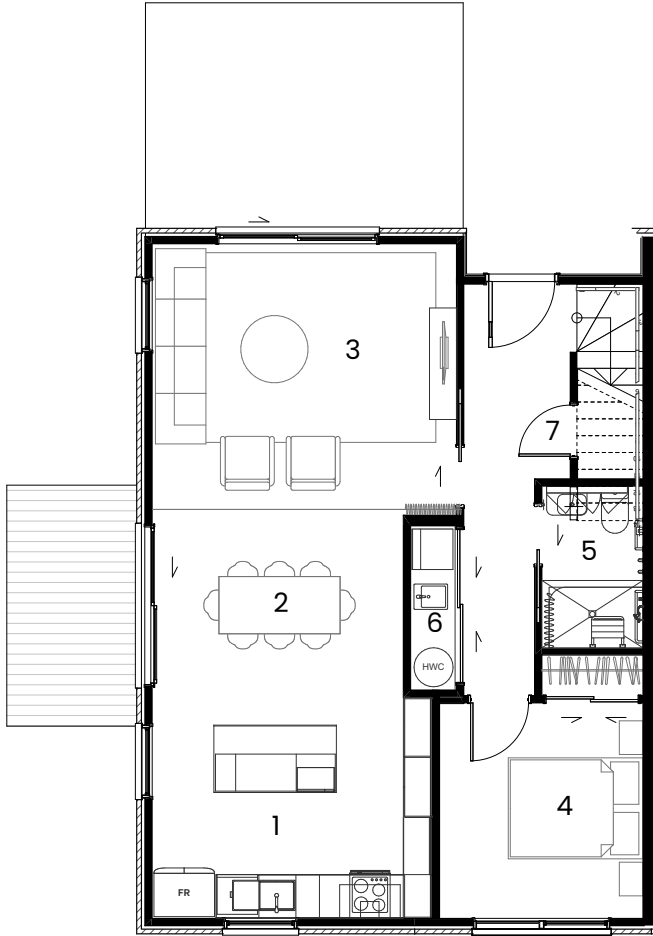


## SECOND FLOOR

- 14. Bedroom 4 (With Wardrobe)
- 15. Study Room
- 16. Flexi Space
- 17. Bathroom

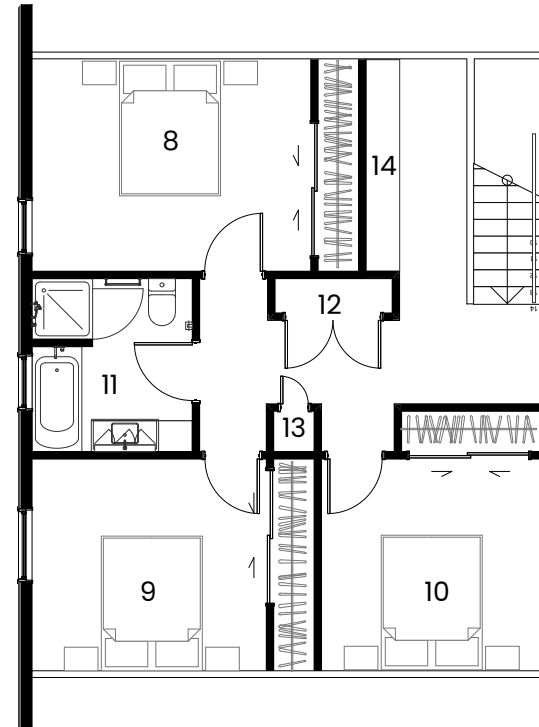
# Type 01 - Accessible Friendly

4 Bedroom 2 Storey



GROUND FLOOR

1. Kitchen
2. Dining
3. Living
4. Bedroom 01 (With Wardrobe)
5. Accessible Friendly Bathroom
6. Laundry & HW
7. Storage (under stairs)

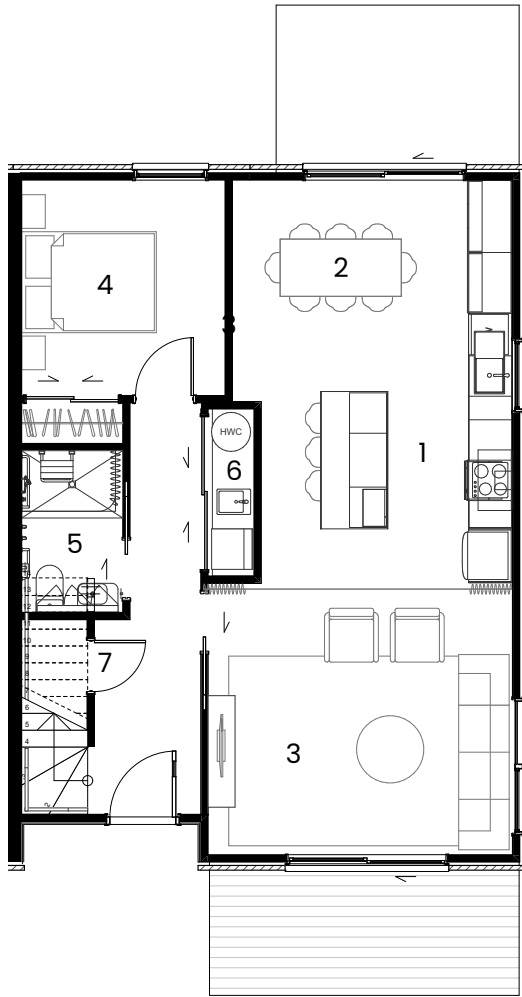


FIRST FLOOR

8. Bedroom 2 (With Wardrobe)
9. Bedroom 3 (With Wardrobe)
10. Bedroom 4 (With Wardrobe)
11. Main Bathroom
12. Linen Cupboard 1
13. Linen Cupboard 2
14. Study Nook

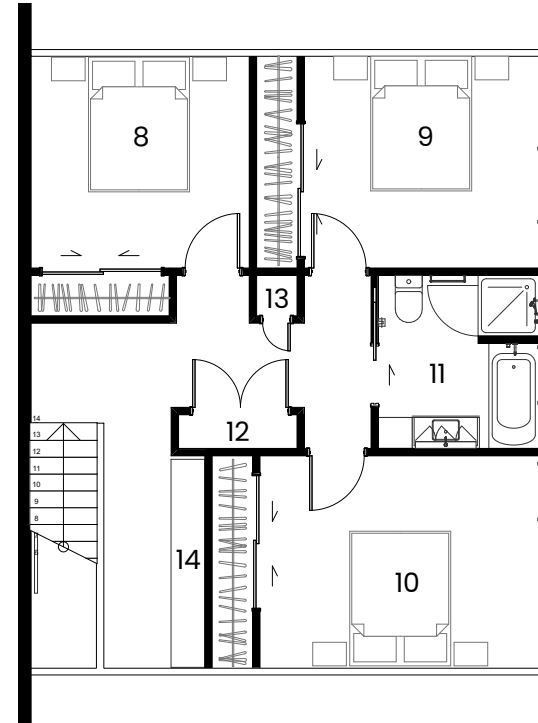
# Type 02 - Accessible Friendly

4 Bedroom 2 Storey



GROUND FLOOR

1. Kitchen
2. Dining
3. Living
4. Bedroom 01 (With Wardrobe)
5. Accessible Friendly Bathroom
6. Laundry & HW
7. Storage (under stairs)

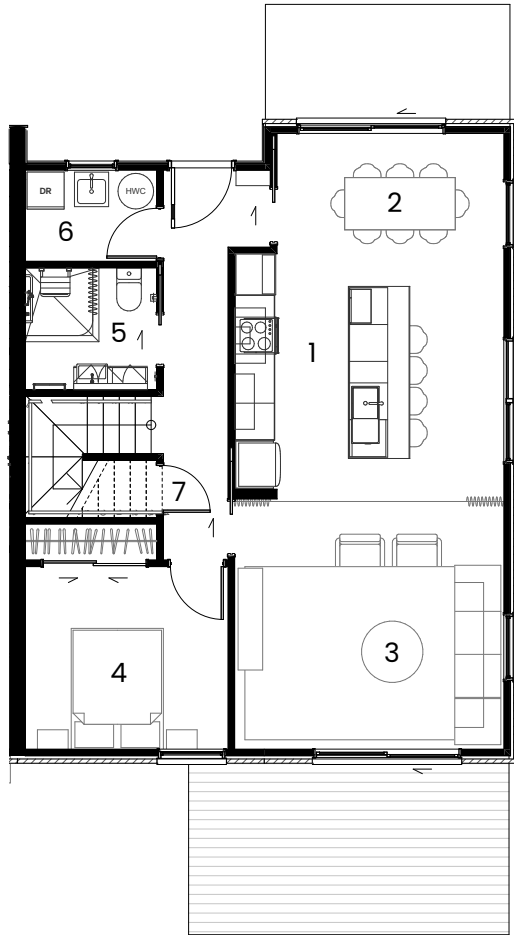


FIRST FLOOR

8. Bedroom 2 (With Wardrobe)
9. Bedroom 3 (With Wardrobe)
10. Bedroom 4 (With Wardrobe)
11. Main Bathroom
12. Linen Cupboard 1
13. Linen Cupboard 2
14. Study Nook

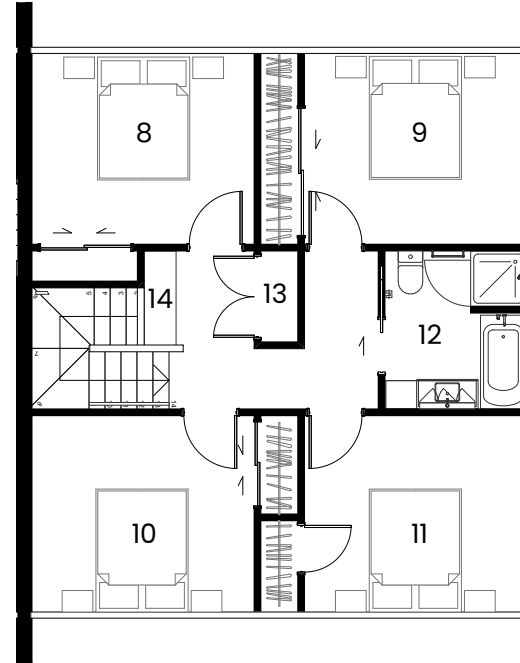
# Accessible Friendly

## 5 Bedroom 2 Storey



### GROUND FLOOR

1. Kitchen
2. Dining
3. Living
4. Bedroom 01 (With Wardrobe)
5. Accessible Friendly Bathroom
6. Laundry & HW
7. Storage (under stairs)

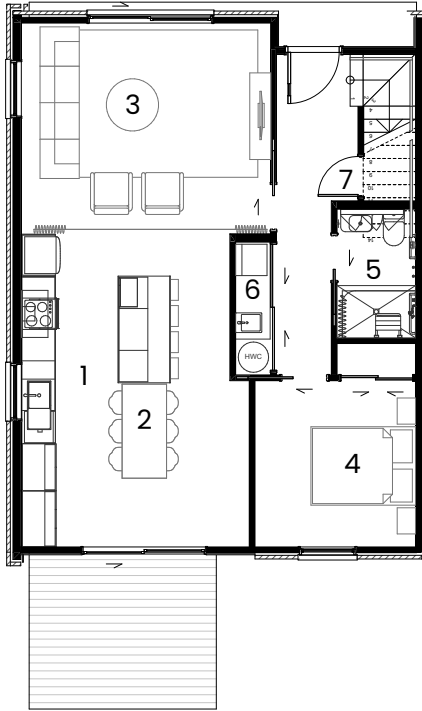


### FIRST FLOOR

8. Bedroom 2 (With Wardrobe)
9. Bedroom 3 (With Wardrobe)
10. Bedroom 4 (With Wardrobe)
11. Bedroom 5 (With Wardrobe)
12. Main Bathroom
13. Linen Cupboard
14. Study Nook

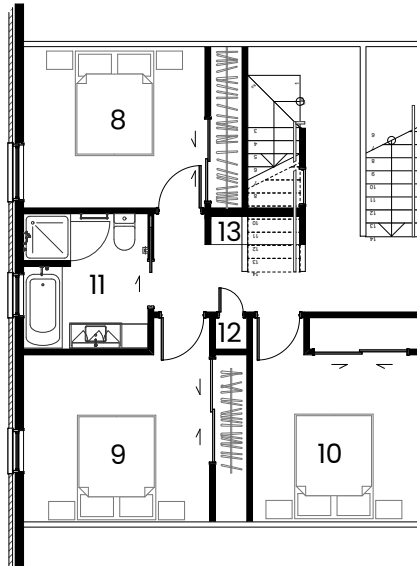
# Accessible Friendly

## 5 Bedroom 3 Storey



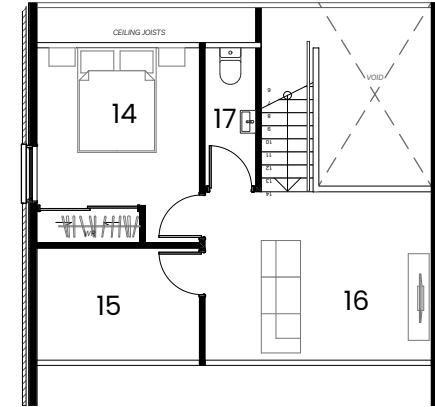
### GROUND FLOOR

1. Kitchen
2. Dining
3. Living
4. Bedroom 01 (With Wardrobe)
5. Accessible Friendly Bathroom
6. Laundry & HW
7. Storage (under stairs)



### FIRST FLOOR

8. Bedroom 2 (With Wardrobe)
9. Bedroom 3 (With Wardrobe)
10. Bedroom 4 (With Wardrobe)
11. Main Bathroom
12. Linen Cupboard
13. Study Nook



### SECOND FLOOR

14. Bedroom 5 (With Wardrobe)
15. Study Room
16. Flexi Space
17. Bathroom

## Reach out today



### A home of your own is within reach

For many of our Pasefika families, owning a home has felt like a distant dream. But through Our Whare Our Fale, that dream is a reality.

### Opportunities like this don't come often

Whether you're just starting your journey, growing your family, or building a future for generations to come, this is your chance to step into a home that reflects your aspirations.

### You won't walk this path alone


We're here every step of the way with advice, guidance, and real support tailored for Pasefika families. We'll help you understand your options, navigate shared ownership, and take confident steps toward securing a home in this proud new village.



Let's turn the dream of home ownership into something real for you, your family, and the generations still to come.

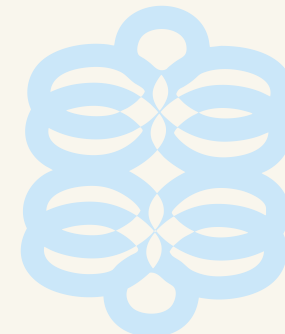
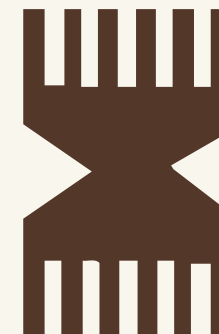
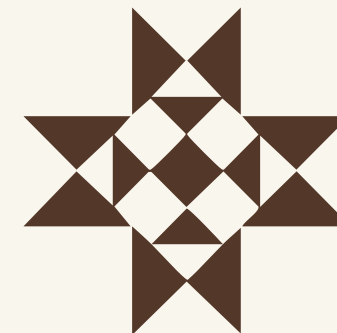
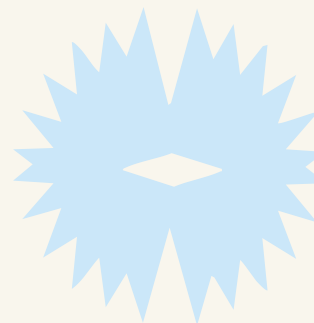
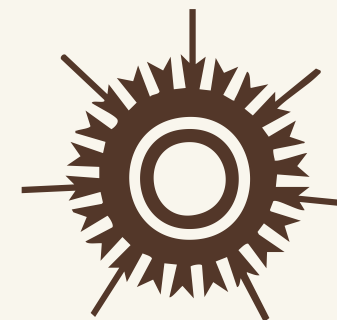
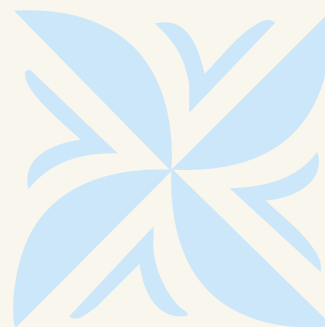
 [housing@cpcollective.org.nz](mailto:housing@cpcollective.org.nz)

 <https://www.cpc-homes.org.nz/>

 0800 226 666

Interested in buying a house through the Our Whare Our Fale scheme? Fill in the form below and we'll be in touch. You can read our [privacy statement here](#):

[Expression of Interest Form](#)





Central Pacific  
Collective



Our Whare  
Our Fale