



WHAKAUAE
Research for Māori Health and Development

Te Pā Raraunga o Whakauae

Constructing a Data Sovereignty Strategy for
Whakauae Research Services

Dr. Amohia Boulton, Dr. Logan Hamley, & Darcy Karaka

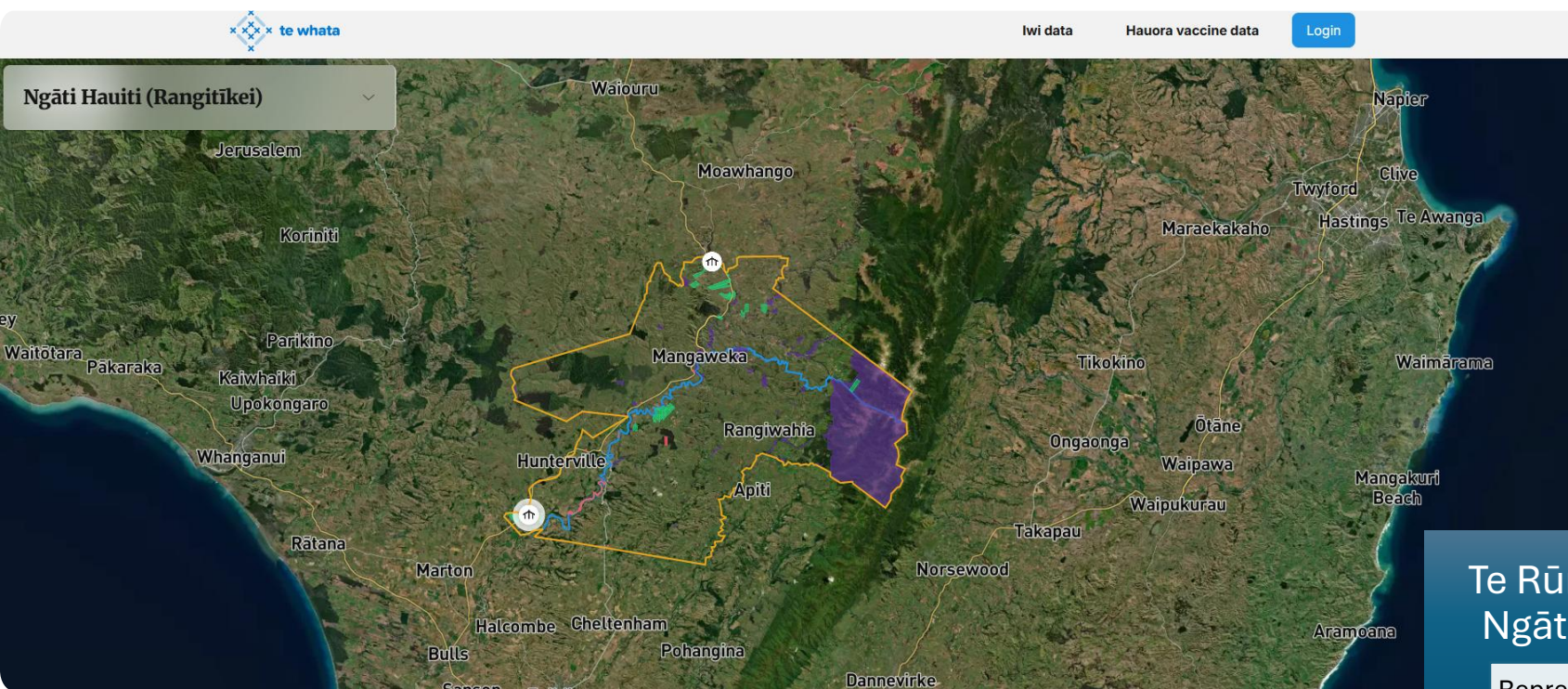


Whakauae Research Services (WRS)

Whakauae Research Services (WRS) was established by Te Rūnanga o Ngāti Hauiti in 2005.

Ngāti Hauiti, based in the Rangitikei district, sought to develop a research team to benefit the iwi but, as work progressed, the team's capability expanded rapidly to include a broad range of kaupapa Māori research services able to be employed all around Aotearoa and beyond.

WRS is unique in its position within Māori health research as the only service directly accountable to and mandated by an iwi entity.



Te Rūnanga o
Ngāti Hauiti

Represented tribal body

Te Maru o
Ruahine Trust

Social wellbeing
Cultural Affirmation
Environmental Health

Whakauae
Research
Services

Māori Health Research and
Development

Te Pātiki Trust
Board

Mandated organisation for fisheries
Economic prosperity

Te Pātiki Holdings
Ltd.

Commercial ventures (farming)
Securities
Fishing Quota

Rākautāonga
Whenua Tōpū
Trust

Economic Prosperity
Land Ownership
Land Purchase

Data Governance for Ngāti Hauiti & Whakauae Research Services



Data Ecosystem Map & Strategy Development

We sought the insights from staff by conducting a data ecosystem map, which examined three key areas and asked three key questions:

– **DATA LITERACY:** *What is data and how does WRS use data?*

– **DATA MANAGEMENT:** *How do we collect, store, and disseminate data?*

– **DATA GOVERNANCE:** *What policies and practices should/do we employ for data quality, privacy, & security?*

Data Literacy

What is data and how does WRS use data?

Interviews - qualitative data collection.	Oral traditions - Pūrakau, waiata, karakia etc.	Quantitative data
Notes from hui e.g. advisory groups, leadership groups, kaimahi	Videos, photographs, voice recordings	Field notes and observations
Quant: surveys/questionnaires	Logic models/Theory of change	HR files - electronic + hard copy
Data Use - to inform reporting (to iwi, funders, partners)	Data use - to improve the way we do things	Data use - to inform research findings
Data use - vehicle for change	Data is a taonga, we are the kaitiaki	Intellectual property
Personal information Demographic data, Consent forms	Quotes: personify reports, outputs etc	Business - Data is an organisational asset
Stewardship - Data is considered for how it contributes to WRS & the wider data system that WRS operates.	Kaitiakitanga - Data assets are managed to support the organisations responsibilities as a member of the data system.	Whakapapa

Data Management

How do we collect, store, and disseminate data?

Sharepoint & other cloud storage	Publications and artifacts	Individual drives on PC's
Website stories	Conference proceedings, symposiums	e-pānui via email
Collection - interviews, wānanga, symposiums	Hard copies in filing cabinet with destroy dates on - very antiquated system	Dissemination: videos, posters, booklets hui
Sensemaking - taking data back to whanau/participants for validation before disseminating	Vignettes (instead of sending transcripts)	Wānanga and hui
Annual and Board Reports	Iwi events and national events	Partnering with other organisations & agencies
IT support - External contractors	Staff annual hīkoi to historical sites	Fiscal data & HR - outsourced
Stories via LinkedIn, website & other media channels	Community engagement	Library systems at WRS

Data Governance

What policies & procedures should/do we employ for data quality, privacy, & security?

Cybersecurity policy - external contractors	Consent forms & participant information sheets	Two factor authentication (2FA)
Transcriber confidentiality	Deletion of material from personal devices	Mahi-a-roopu to help ensure data quality
Using imagery & material that is ok to share e.g. at international conferences	Seek specific permission from source if unsure	Data sovereignty policy - who owns data, who can use, for what purpose, and for how long
Data governance policy - where is data stored, how is it being safeguarded?	Our relationships with Ngāti Hauiti - i.e. how does this work also support their engagement with MDS and MDG	In 2023 WRS recognised that we needed better data management. Steph was hired to fine tune some of this GPO
Research practice congruent with parameters of ethics approval	Other related policies e.g. Research Policy, Communications Policy, Filing Policy CS	Ngā Pou - Te Kāhui Raraunga Māori data governance model
CARE Principles: Collective Benefit. Authority to control. Responsibility. Ethics	Records & Information Management Strategy - Steph working on CS	Māori data audit tool - Te Mana Raraunga
limit access to interview data/ Personal info: consent forms	WRS Data Sovereignty Statement	Development of a digital pātaka - a pātaka kōrero

Te Pā Raraunga o Whakauae

Pātūtū (Outer Palisades) – Security & Defence

Represents data protection, cybersecurity, and external barriers against unauthorised access.

Pūwhara (Watchtowers) – Oversight & Monitoring

Symbolises data auditing, monitoring, and regulatory compliance.

Pātaka Kai (Storage Houses) – Data Repositories

Represents secure data storage, and structured governance frameworks.

Waharoa (Gateway) – Access Control & Ethics

Controls who can enter and engage with data, reinforcing CARE principles

Rua (Underground Storage) – Archival and Ancestral Knowledge

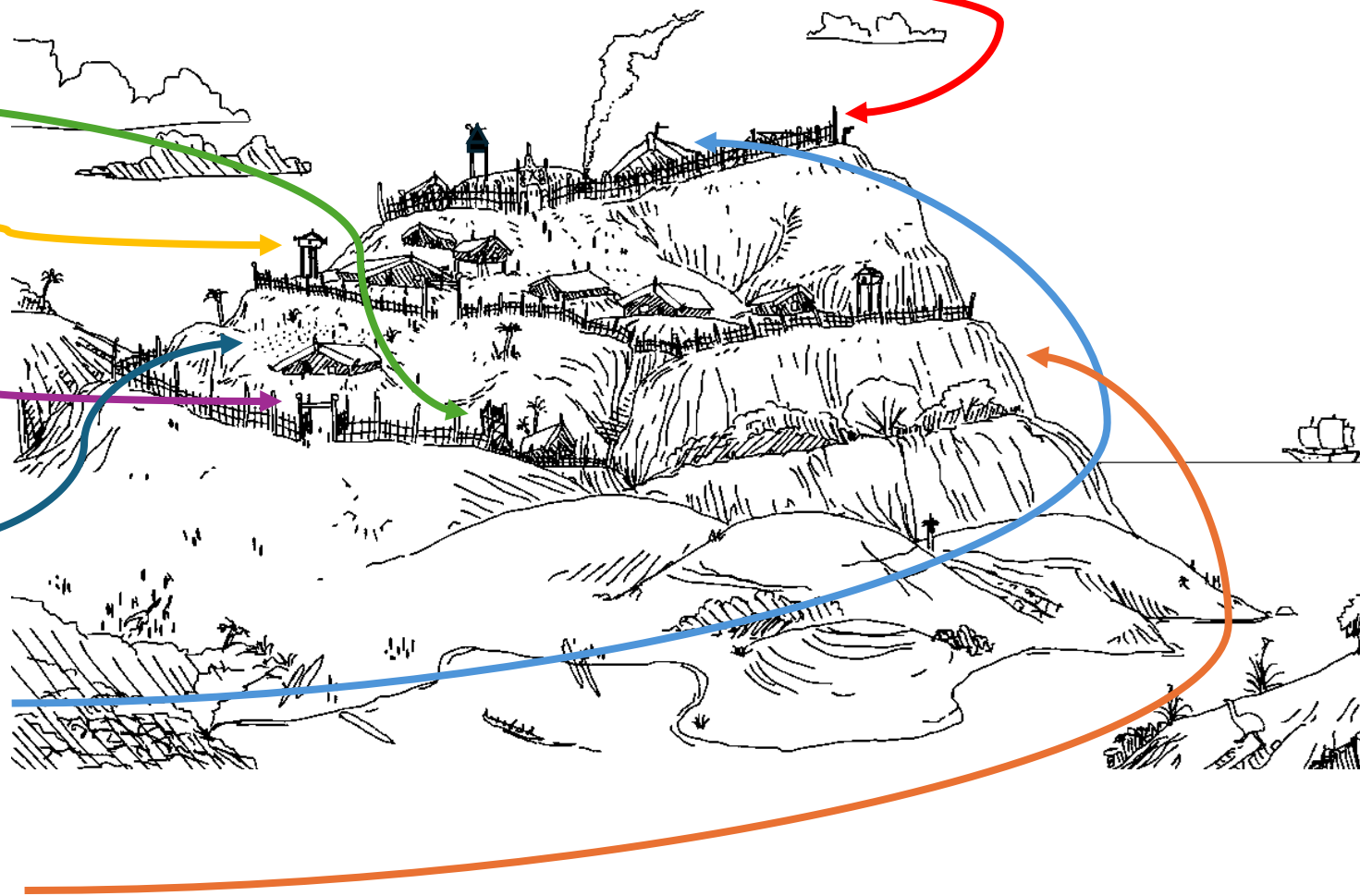
Represents protected repositories for historical data, cultural narratives, and intergenerational knowledge.

Whare Maihi (Carved Meeting House) – Decision-Making & Authority

Represents rangatiratanga (Chieftainship) over data governance, policy development, and iwi-led decision-making structures.

Tuaropari (Defensive Terraces) – Layered Governance Mechanisms

Symbolises different levels of data governance policies, from iwi-level controls to community-based regulations.



Next steps

We are actively looking at initiatives, research, and undertakings in IDSov and IDGov to guide and inform our efforts at WRS.

We are new to the space and want to bring all of our people with us. To do that we need to:

- Continue to gather insights and ideas to inform what, why, and how to implement a DS Strategy for WRS.
- Develop capability and capacity among the team to enhance data literacy and produce data kaitiaki (guardians).
- Continue to develop each part of our Pā



WHAKAUAE

Research for Māori Health and Development

References

Clark, V., Kukutai, T., Kani, H., Teague, V., & Tarapa-Dewes, E. P. (2025). Hapū data sovereignty: Tips for getting started.

Clark, V., Kukutai, T., Teague, V., Kani, H., & Tarapa-Dewes, E. P. (2025). The Māori Data Privacy Framework: How useful is it for hapū?.

Clark, V., & Teague, V. (2025). Protecting hapū data privacy: A Ngāti Tiipa case study of technology considerations.

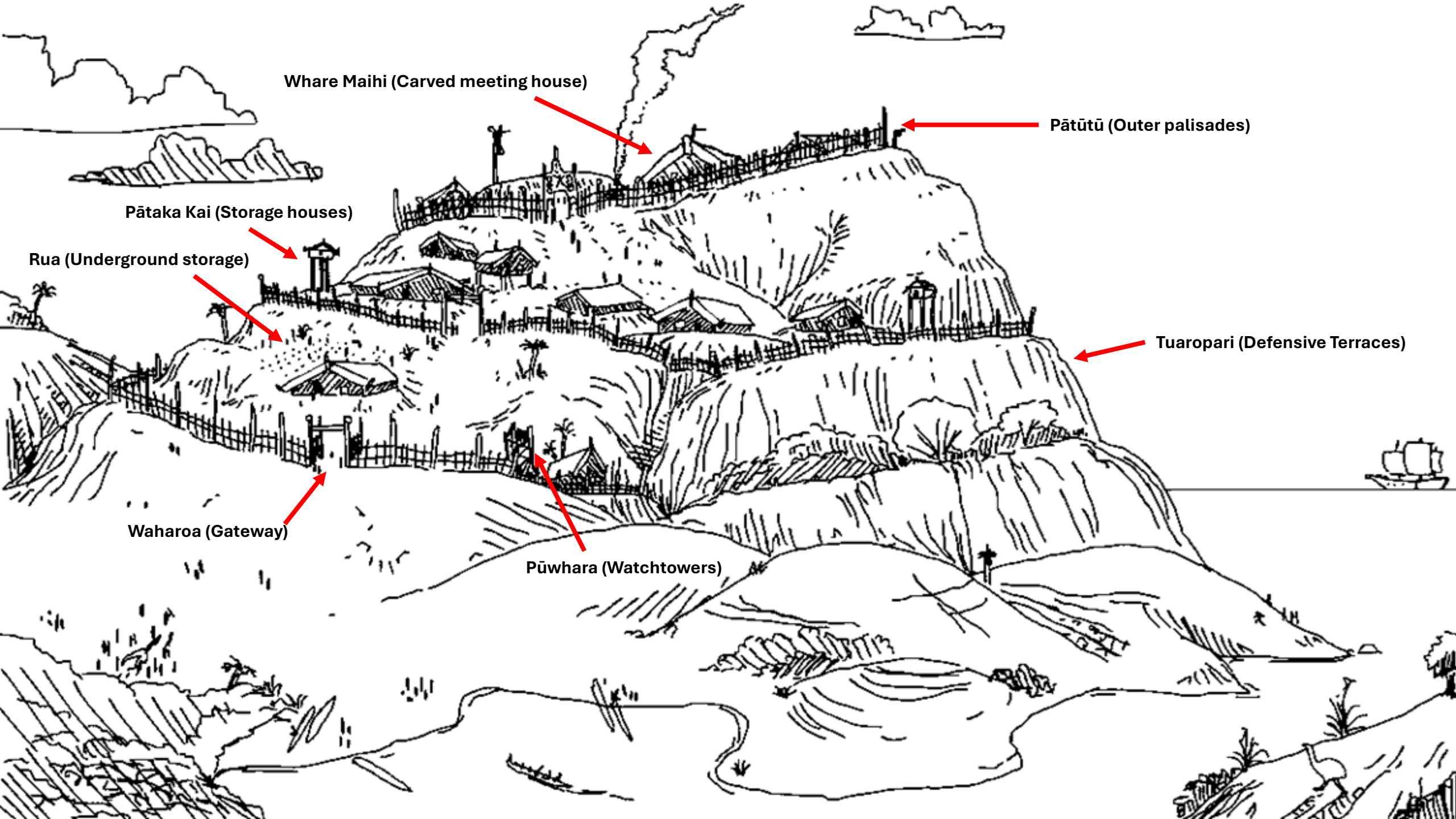
Kukutai, T., Campbell-Kamariera, K., Mead, A., Mikaere, K., Moses, C., Whitehead, J. & Cormack, D. (2023). Māori data governance model. Te Kāhui Raraunga.

Research Data Alliance International Indigenous Data Sovereignty Interest Group. (2019). CARE principles for Indigenous data governance. The Global Indigenous Data Alliance. Retrieved from <http://gida-global.org/>

Te Mana Raraunga. (2018). Māori data sovereignty principles. Te Mana Raraunga Māori Data Sovereignty Network.

Zealandiatherium (2022). Fictional Māori Pā. Retrieved from <https://www.deviantart.com/zealandiatherium/art/Fictional-Maori-Pa-914847109>





Whare Maihi (Carved meeting house)

Pātūtū (Outer palisades)

Pātaka Kai (Storage houses)

Rua (Underground storage)

Tuaropari (Defensive Terraces)

Waharoa (Gateway)

Pūwhara (Watchtowers)