

Capability Statement



The ARCH Artifex Story

Our attitudes and behaviours are centred around our drive to deliver **REAL VALUE** to our clients. We believe value can only be measured by the outcomes achieved. If it doesn't add value, we don't do it.

We are better partners because we have a deep understanding of the development and delivery of projects, the services our clients need, and the role our services play in driving successful outcomes. Our clients prefer working with us because we make it easy. **STRONGER TOGETHER.**

ARCH was founded in 2014 by John Armstrong. John's vision was to provide an alternative consultancy model focussed first and foremost on delivering measurable outcomes for our clients.

From our initial Engineering and Project Management services for projects such as Sydney Light Rail and Sydney Metro, ARCH quickly expanded to provide **Systems Engineering & Safety Assurance** and is now the leading independent provider of SESA in New South Wales.

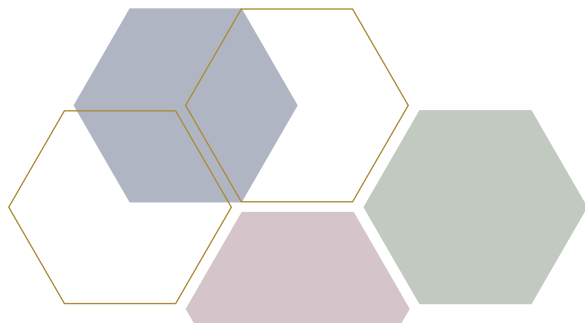
In 2018, John and the leadership welcomed Artifex. Artifex was originally founded in 2005 and has an impressive track record in managing infrastructure projects.

As ARCH Artifex, we created our **Project Services Group** to provide planning and scheduling, constructability, and engineering management.

In 2021, ARCH Artifex took the steps to open offices in Victoria and Queensland. Early projects include the Independent Safety Assessor (ISA) for Melbourne Metro and assisting on the Beerburrum to Nambour Rail Upgrade (B2N).

In 2022, we expanded our services to include environmental management and sustainability. This service has been met with immediate success and has grown to become **Environment, Sustainability, Engagement & Communication.**

Our aspiration is to help our clients to deliver successful projects by providing the services they need in a way that adds real value.



CORE CAPABILITIES



Systems Engineering & Safety Assurance (SESA) is essential to the successful delivery of complex, safety-critical projects.

ARCH Artifex has emerged as a leading specialist provider of SESA services, playing an influential role in the development and delivery of some of Australia's most iconic projects.

Our strength is our people and their combination of specialist expertise and practical knowledge.

Blending the power of SESA with standard industry custom and practice is the key to increasing value and lowering cost and risk.

We also recognise that the assurance world can be confusing, abounding with acronyms and jargon. ARCH Artifex provides a safe pair of hands to guide our clients through the steps necessary to deliver their projects successfully.



3K SAFETY HAZARDS
CONTROLLED

250K REQUIREMENTS
MANAGED

ARCHARTIFEX
STRONGER TOGETHER

CORE CAPABILITIES



Initially providing engineering and project management our Project Services Group has responded to our client's requests to expand our services to give them access to more of the skills and expertise they need to deliver their projects.

Irrespective of the service, we drive value by ensuring our team is amongst the best in the industry. We believe our partners have the right to demand the highest quality of people assisting across their projects, therefore we make it our priority to attract and provide the most experienced and capable resources in the industry.

From inception to completion, we provide a range of services to drive efficient and optimal outcomes for our clients, with the aim of providing certainty and success to your project. Our approach is simple – we are collaborative and flexible – we are part of your team.

We target working with government agencies, private operators, contractors and consultants; this ensures ARCH Artifex understands the needs and drivers of all parties who contribute to successful projects.



150+ PROJECTS
DELIVERED


ARCHARTIFEX
STRONGER TOGETHER

CORE CAPABILITIES

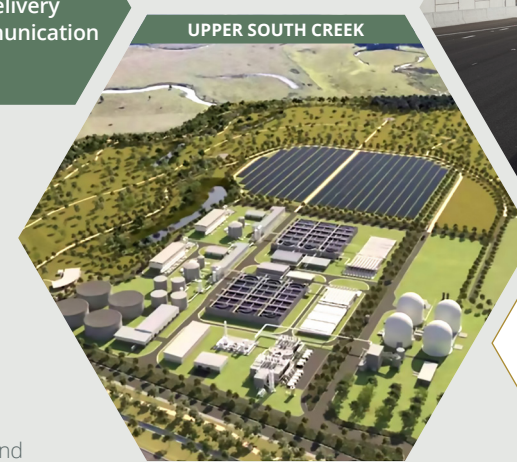


Our strategy for ESE&C has been to blend our teams track record of delivery with contractors, consultants and clients. Using our first-hand knowledge of the challenges our clients face, we are able to provide innovative, pragmatic and first-time right solutions in our delivery. This has driven our reputation and rapid growth within a complex industry.

Environmental planning and management, in addition to engagement and communication, form an integral component of every stage of the project life-cycle. From early project business-case to operational management our team offers a collaborative approach.

With a focus on intelligent solutions, coupled with regulatory compliance, we pride ourselves in the delivery of our environmental planning and management, as well as our engagement and communication services across some of Australia's most complex and iconic projects.

Our Sustainability practice offers cutting-edge and cost-saving solutions to best suit your business. From corporate sustainability to major project delivery our team has developed sustainability strategies at a federal level, through to some of the highest project sustainability ratings awarded in Australia.



ARCH is proud to be the **FIRST** Sustainability Management Consultancy in **NSW** to be managing and delivering an **Infrastructure Sustainability Council (IS) v2.1 Design & Asbuilt rating**.

IF YOU WANT A TEAM WHO HAS DONE IT BEFORE, ARCH CAN HELP.

ARCHARTIFEX
STRONGER TOGETHER

Our sectors

As ARCH has grown we have expanded to deliver projects across multiple sectors including Rail, Road, Renewables & Power, Water and Buildings.

ARCH started in the rail sector on iconic projects such as Sydney Light Rail and Sydney Metro and rapidly expanded to include road projects with early involvement in WestConnex and Rail and Roads remain as key sectors for our SESA services.

The merger with Artifex in 2018 brought substantial experience in the Power sector and ARCH Artifex has now moved decisively into Renewables to assist the upcoming drive towards green energy.

As we have increased the services we provide, many of the services are not sector specific which has seen our reach expand into the water and building sectors and beyond.

ARCH's approach to sectors is to appoint a sector lead to ensure that we understand the latest trends and developments and engage with the pipeline of projects helping ARCH identify where we can add value to our clients.

Safety Assurance
Systems Engineering
Human Factors
Engineering & Project Management
Constructability & Construction Management
Project Planning & Controls
Engagement & Communication
Environment
Sustainability

RAIL



SYDNEY METRO

ROAD



WESTCONNEX

RENEWABLES & POWER



GE WIND FARM, BANGO

BUILDING



CENTRAL PRECINCT

WATER



RICHMOND WASTE WATER SERVICES UPGRADE

For more information, please contact:
Conrad Winter: 0409 790 011
conrad.winter@archservices.com.au

RAIL	Safety Assurance	Systems Engineering	Human Factors	Engineering & Project Management	Constructability & Construction Management	Project Planning & Controls	Engagement & Communication	Environment	Sustainability
Sydney Metro – City & South West	●	●	●	●	●	●	●	●	●
Sydney and Parramatta Light Rail		●		●	●				
Metro Tunnel Project – Melbourne	●								
TfNSW Transport Access Program	●	●		●	●	●	●	●	●
ARTC – Inland Rail (various)	●	●	●		●				
Sydney Metro - Western Sydney Airport	●	●	●		●		●	●	
ROAD	Safety Assurance	Systems Engineering	Human Factors	Engineering & Project Management	Constructability & Construction Management	Project Planning & Controls	Engagement & Communication	Environment	Sustainability
Coffs Harbour Bypass	●	●	●						
Heathcote Road				●		●	●	●	
TfNSW Sydney Gateway									●
TfNSW Great Western Highway			●			●	●	●	●
M5 & M8 Tunnels		●		●	●				
North-East Link	●								●
BUILDING	Safety Assurance	Systems Engineering	Human Factors	Engineering & Project Management	Constructability & Construction Management	Project Planning & Controls	Engagement & Communication	Environment	Sustainability
Central Barangaroo	●	●		●	●	●		●	●
Western Sydney Airport – Terminal & Buildings	●	●							●
Atlassian Central	●	●		●	●	●		●	
Sydney Football Stadium								●	
Brookfield Place	●	●		●	●	●			
Waterloo Station ISD (Syd Metro)				●	●	●		●	
RENEWABLES & POWER	Safety Assurance	Systems Engineering	Human Factors	Engineering & Project Management	Constructability & Construction Management	Project Planning & Controls	Engagement & Communication	Environment	Sustainability
Central West Orana – Renewable Energy Zone				●	●			●	
Bango Windfarm				●	●				
Elecnor – Project Energy Connect								●	
Global Switch Feeder Cables				●	●				
Taihan Feeder Cables				●	●				
Hunter Renewable Energy Zone									●
Baldon Windfarm								●	
WATER	Safety Assurance	Systems Engineering	Human Factors	Engineering & Project Management	Constructability & Construction Management	Project Planning & Controls	Engagement & Communication	Environment	Sustainability
Rouse Hill Water Resource Recovery Facility					●				
Springvale MPWS Water Treatment Project				●	●				
PROMAC (Prospect to Macarthur) Water Pipeline					●				
Upper South Creek Waste Water Recycling Facility					●	●			●
Richmond Waste Water Services Upgrade					●			●	
Hobsons Bay Water Main Upgrade Project					●				

Our team

Under the leadership of our executive, we have carefully grown our team of high-quality people, and with each project we strive to keep on improving.



John Armstrong
0452 544 149



MANAGING DIRECTOR

John has over 25 years' experience in developing and delivering road and rail infrastructure projects across Australia and Internationally. John's experience as a client, contractor and consultant gives him an excellent insight into what each organisation needs and how best ARCH Artifex can help them.



Steve Naumovski
0400 300 246



ADVISORY BOARD MEMBER

Steve has 25 years' experience in developing and delivering rail, road and power infrastructure projects. Steve brings our clients a broad technical capability to complex multidisciplinary projects with particular expertise in constructability and interface management.



Tom Castor
0488 083 606



DIRECTOR REGIONAL MANAGER – VIC

Tom has over 30 years in engineering management in both Australia and the United Kingdom including the electrification of Adelaide's passenger rail network and traction power system upgrades in Queensland's coal rail systems. Tom joins ARCH Artifex from Metro Trains Melbourne, where he was the Engineering Manager for the Metro Tunnels Project and the Level Crossing Removal Program.



Craig Flood
0436 622 227



DIRECTOR MARKETING & BUSINESS DEVELOPMENT

With over two decades of experience in infrastructure, engineering, and major project environments across Australia, the UK, and broader international markets, Craig brings a wealth of industry knowledge and commercial insight. His background spans strategy, stakeholder engagement, business growth, and market positioning – all underpinned by a strong understanding of complex project lifecycles.



Jonathan Luey
0409 688 709



DIRECTOR SYSTEMS ENGINEERING & SAFETY ASSURANCE

Jonathan is an Engineering Manager with over 20 years' experience. He leads our SESA team nationally and brings to the table his extensive experience in implementing best practice Engineering Assurance within client organisations to help ARCH Artifex support contractors, developers and consultants during project delivery.



Andy Petrie
0410 969 945



DIRECTOR SYSTEMS & SAFETY ASSURANCE

Andy has 25 years of experience and is ARCH Artifex's national lead for Safety Assurance. Andy's knowledge and experience with Government Agencies and Head of Safety roles with rail infrastructure managers ensure that ARCH provides the best in class rail Safety Assurance services nationally.



Tharan Karunakaran
0412 616 499



TECHNICAL DIRECTOR SYSTEMS ENGINEERING & SAFETY ASSURANCE

Tharan is a Chartered Engineer with 20 years' professional, multidisciplinary engineering experience. He has expert Systems Engineering & Safety Assurance (SESA) knowledge and skills gained from working on both the contractor and client side within the Rail, Defence, Airports, and ICT sectors.



Raza Rizwan
0433 414 613



SENIOR CONSULTANT SYSTEMS ENGINEERING & SAFETY ASSURANCE

Raza has over 10 years of experience in Victoria and was an IRSE Finalist – Systems Engineer of the Year in 2018. Raza's Victorian experience includes Melbourne Metro, High Capacity Metro Trains, Melbourne Airport Rail and Yarra Trams and he is currently assisting with our Independent Safety Assessor (ISA) role for MTM.



Sameera Bandara
0412 409 882



ASSOCIATE DIRECTOR SYSTEMS ENGINEERING & SAFETY ASSURANCE

Sameera is an experienced Systems and Safety Engineer with over 22 years of experience working across Rail and Defence Aviation sectors. In the last 5 years, he has worked exclusively on Major Rail Projects including the Metro Tunnel Project (MTP) and the Melbourne Airport Rail (MAR) Project, supporting the delivery and integration of novel technology across the Melbourne Rail Network.



Ray Misa
0425 671 718



ASSOCIATE DIRECTOR NATIONAL HUMAN FACTORS LEAD

As a Human Factors (HF) expert, Ray has supported transport, infrastructure, and safety projects across Australia and New Zealand for over 17 years. With diverse experience in consulting, design, and assurance, he has an intricate understanding of HF integration across the entire project lifecycle.

Our team



Gareth O'Brien
0428 194 445



DIRECTOR ENVIRONMENT, SUSTAINABILITY, ENGAGEMENT & COMMUNICATION

An experienced environment and sustainability leader on major infrastructure projects, Gareth has 10+ years' experience across all phases of the project lifecycle. Gareth brings expertise in environment and sustainability management in design and planning approvals, construction delivery, assurance and leading sustainability ratings.



Mark Turner
0412 432 488



ASSOCIATE DIRECTOR ENVIRONMENT

Mark has over 15 years of experience in operational leadership, pre-contract and delivery roles across environmental management, approvals and sustainability within various sectors in Australia. Having held positions with Tier 1 Contractors and as a regulator in State and Local Government, he understands approval and compliance requirements, which he can translate into a construction setting to ensure ongoing compliance during the Project lifecycle.



Rosie Dutton
0415 597 887



PRINCIPAL SUSTAINABILITY LEAD

Rosie has a history of delivering sustainability excellence across a range of major infrastructure projects. She is outcomes oriented; an analytical thinker; and passionate about sustainable development and education. She has demonstrated exceptional leadership and skills to engage, motivate and manage multi-disciplinary teams to deliver tangible sustainability outcomes from design through to operation.



Byron Davy
0411 988 802



ASSOCIATE DIRECTOR SUSTAINABILITY – VIC

An accomplished sustainability leader with 15+ years of expertise across major infrastructure and commercial projects, Byron excels in developing and implementing sustainable strategies throughout the design and delivery phases. Passionate about helping organisations develop their sustainability capacity and has led and managed the delivery of 50+ sustainable rating outcomes, Byron brings a wealth of practical and strategic experience, insight to projects, corporate and group level sustainability.



Patrick Costello
0478 076 818



SENIOR ENVIRONMENTAL CONSULTANT/ECOLOGIST

Patrick is an experienced Environmental consultant and Regulator in the environment impact assessment, environmental management and ecology disciplines. He has worked across a range of sectors in NSW and Qld including transport, water, future energy, energy and resources, and regulatory advisory. Recently, Patrick has been supporting the management and coordination of EIS documents and associated approvals for projects in Metro and Regional NSW & QLD.



David Jones
0417 314 537



DIRECTOR PROJECT SERVICES

David has 20 years of engineering management experience in transport infrastructure, waste-water, and power projects. Prior to joining ARCH Artifex as a Director in 2020, David was Downer's NSW Engineering Manager, responsible for the design, Systems Engineering & Safety Assurance, construction quality and commissioning management across all NSW rail and road projects.



Mark Hughes
0447 017 187



DIRECTOR PROJECT SERVICES

Mark has 30+ years of international experience within the transport and broader infrastructure market across operations, engineering and projects. He has spent the last 20 years in the consulting and professional services market in the UK and Australia, working with operators, manufacturers, contractors and public bodies, as a consultant, Regional Director, Country Manager and Managing Director. Mark is passionate about building teams and capability to deliver exceptional outcomes for clients.



Josh Boyd
0417 111 321



ASSOCIATE DIRECTOR CONSTRUCTABILITY

Josh has 15+ years' experience in managing major rail infrastructure design, construction, and commissioning projects. Josh leads ARCH's constructability service and is responsible for the delivery of construction methodology and planning on major infrastructure projects with a particular expertise in brownfield rail environments.



Richard Wulff
0414 699 370



ASSOCIATE DIRECTOR PROJECT PLANNING & CONTROLS

Richard brings over 17 years of international experience in delivering major programs and projects across the energy, water, transport, and broader infrastructure sectors. His expertise spans development, engineering, delivery, and operations. Over the past decade, he has provided consulting and transformational services in the the delivery and control of infrastructure programmes across the US, UK, UAE, and ANZ.



Damian Perera
0452 211 328



SENIOR CONSULTANT PROJECT MANAGEMENT & CONSTRUCTABILITY

With 14+ years' experience, in the delivery and leadership of multi-sector projects Damian provides a technical understanding of constructability and the logistics required to deliver successful project outcomes. His ability to integrate his hands on experience with design experience allows him to collaborate with clients and project teams to develop constructability plans integrated with design and procurement strategies to achieve practical and safe construction solutions.

What our clients say

Our aim as a company and as people is to help clients we like and respect, do work we enjoy and are good at, and deliver worthwhile projects.

"I am pleased to provide an endorsement for ARCH's work on Sydney Gateway Stages 1 & 3, a complex major infrastructure project which showcases an exceptional commitment to sustainability. ARCH's team demonstrated extensive knowledge and understanding of sustainability risks and opportunities and ensured that they were appropriately tracked and recognised within the project. Arch also facilitated comprehensive training to upskill the internal project team, giving them the skills to deliver future projects. ARCH's input and dedication enabled effective implementation and recognition of the significant effort to deliver sustainable outcomes across the project. Driving recognition for the integration of community and Aboriginal artworks throughout the project, an Australian first innovative pavement design tool and implementation of active transport links and the emphasis on reducing embodied carbon emissions demonstrate the Project's dedication to a greener future and a thriving, interconnected community. Thank you to the entire team for their commitment and dedication."

Alex Major, Environment, Sustainability and Approvals Manager, JOHN HOLLAND GROUP

"I am writing to thank you for the quality of service provided by your company. We sincerely appreciate your efficient, timely service, the level of detail and accountability you have demonstrated on Ertech's - Heathcote Road Upgrade Project over the last year, and the way you conduct business as a whole."

Fraser Turnbull, Project Manager, ERTECH

"ZHACOX selected ARCH Artifex due to their deep experience and competence in a range of assurance activities. The team blended seamlessly with our design team, carefully integrating the design thinking to achieve brief compliance."

Satvir Mand, Director, COX Architecture

"The team are exceptionally skilled at providing support across the project lifecycle, including Systems Engineering and Safety Assurance. ARCH Artifex people are of the highest standard who consistently demonstrate a high performing attitude and a commitment to best project outcomes."

Rob Wallace, Project Director, GEORGIU GROUP

"ARCH Artifex are the consummate professionals, always meeting timelines and providing effective client engagement. The team are a highly engaged workforce and the business displays an impressive organisational culture."

Tony Lennon, National Rail Technical Lead,
AUSTRALIA PACIFIC - ARCADIS

www.archservices.com.au

Client + Contractor + Consultant



EnergyCo

GLOBAL
SWITCH



QueenslandRail



TransGrid



Transport
for NSW



Western
Sydney
Airport



AW EDWARDS



BESIX Watpac



Built.



DEGNAN



ERTECH

ferrovial
construcción



Georgiou

HASLIN

HYUNDAI MOVEX

JOHN
HOLLAND



MARTINUS

MCCONNELL
DOWELL
CREATIVE CONSTRUCTION™

MULTIPLEX
Built to outperform.

SIEMENS



Stephen
Edwards
CONSTRUCTIONS

UGL

webuild

ARCADIS

ARUP

aurecon

COX

edp
an RSK company

HATCH

Jacobs

WSP

For more information:

email: contactus@archservices.com.au

phone: 1300 082 607

ARCHARTIFEX
STRONGER TOGETHER