

# Changing the Story

Irish charities supporting communities through sharing surplus food



# Contents Page

<b>Limerick Island Community Partners</b>	<b>04</b>
<b>Building trust through partnerships for a stronger community</b>	<b>04</b>
<b>Key impacts of Limerick Island Community Partners</b>	<b>06</b>
<b>Challenges for Limerick Island Community Partners</b>	<b>10</b>
<b>Taking steps – what you can learn from Limerick Island Community Partners</b>	<b>11</b>



<b>Key words (a-z)</b>	<b>Explanation</b>
<b>Empower</b>	To give someone more control and power over their situation.
<b>Food sharing</b>	Sharing good food for free or low cost, instead of wasting it.
<b>Foodbank</b>	A non-profit, charitable organisation that shares donated or surplus food with people in need.
<b>Social enterprise</b>	Businesses that work to improve the lives of people.
<b>Social supermarket</b>	A shop that sells food more cheaply than retailers to those who are living on low-incomes or experiencing poverty.
<b>Surplus food</b>	Good food that, if not used soon, will go to waste.
<b>Sustainable</b>	Something that can continue for a long time without having a harmful impact.
<b>Wrap-around services</b>	Additional services to support a person's wellbeing like counselling and financial advice.

# Limerick Island Community Partners

Building trust through partnerships for a stronger community

Through its food-sharing services, Limerick Island Community Partners works to build community trust and increase members' skills and confidence.



## Overview

Limerick Island Community Partners' vision is to be the one-stop-shop community voluntary organisation within the King's Island community in Limerick City. It aims to improve lives through personal and community development, for example, by providing community education courses and work experience.

It aims to do this within a safe, healthy and sustainable environment. The organisation works with a wide range of local community groups to connect people with services. This includes its own community café and meals-on-wheels service, which both use surplus food. The organisation is open Monday to Friday 9am to 4pm.



## Limerick Island Community Partners connects with the entire community

Limerick Island Community Partners links up with local:



Limerick Island Community Partners advertises available community supports and aims to get the community involved. It also works with a large community food bank to provide food support to people in their community.

# Key impacts of Limerick Island Community Partners

The group is actively connecting with the community across a range of services and this builds trust in the organisation and improves the community's involvement.

## Grouping services in one place puts the organisation at heart of the community

Limerick Island Community Partners work with:



**meals-on-wheels service**



**a community café with breakfast programmes**



**upskilling & training opportunities**



**bee keeping & honey production**



**providers of art classes**



**counselling services**

Members of the local community often volunteer to support many of these services and take pride in the programmes they offer.

## Group has secured the support of the community

The sense of pride and belonging created by the Limerick Island Community Partners' centre helps to ensure community support for the centre's:



**Food services**



**Work with Surplus Food**



## Flexible and wide-ranging approach builds confidence and opportunities

The broad range of services available in the centre gives members of the local community the opportunity to try new things and learn new skills.

## Schemes give community members confidence to expand their lives

The group:

- gives members of the community confidence to view their own lives in different ways
- helps to highlight surplus food as a pathway to new opportunities.



# Limerick Island Community Partners

Creating long-lasting services and building trust



## Provides wide range of services

Limerick Island Community Partners provides a wide variety of services, from buses to legal advice. This helps to build trust in the organisation, within the local community and supports a sense of belonging.

## Makes food accessible to all

For those who cannot use the community café service, Limerick Island Community Partners offers a meals-on-wheels service. This means everyone can access a food service and helps make sure that good food does not go to waste.



## Sustainability – planning for the long term

Sustainability is at the heart of Limerick Island Community Partners' vision. Partnerships with a wide variety of groups and organisations help to provide support to the local community over the long term.



## Growing through partnerships

Limerick Island Community Partners aims to provide for the local community's needs by creating links with many services and organisations, from schools to boat clubs. These links make sure the organisation is able to provide advice and support to members of the local community on areas such as social welfare entitlements and employment opportunities.



## Making food sharing a gateway to other services

The food sharing service brings many people to the centre. Limerick Island Community Partners uses this as a gateway to offer additional support and services to the community. Local community members are able to build their confidence and skills through volunteering or community projects, like beekeeping.



## One-to-one guidance

The centre has a social-inclusion programme. This offers people guidance on pathways for a better life through: **education, employment, involvement in the community.**



## Funding

Funding is provided through a mix of public funding streams and social enterprise income.

# Challenges for Limerick Island Community Partners

**“The biggest challenge is trust, getting the community on board, keeping the community on board”**

Limerick Island Community Partners has built its vision around the community – programmes and projects for the community, by the community. For this to work, the community needs to believe in what the organisation does. It is important that people:



**support its projects in their community.**



**use the organisation's services**



**get involved**

**Trust is essential for success**

This is a community that has experienced hardship. Some members of the community are fearful of outsiders or official organisations. It is vital that Limerick Island Community Partners demonstrates that its work is helping the community and providing support.



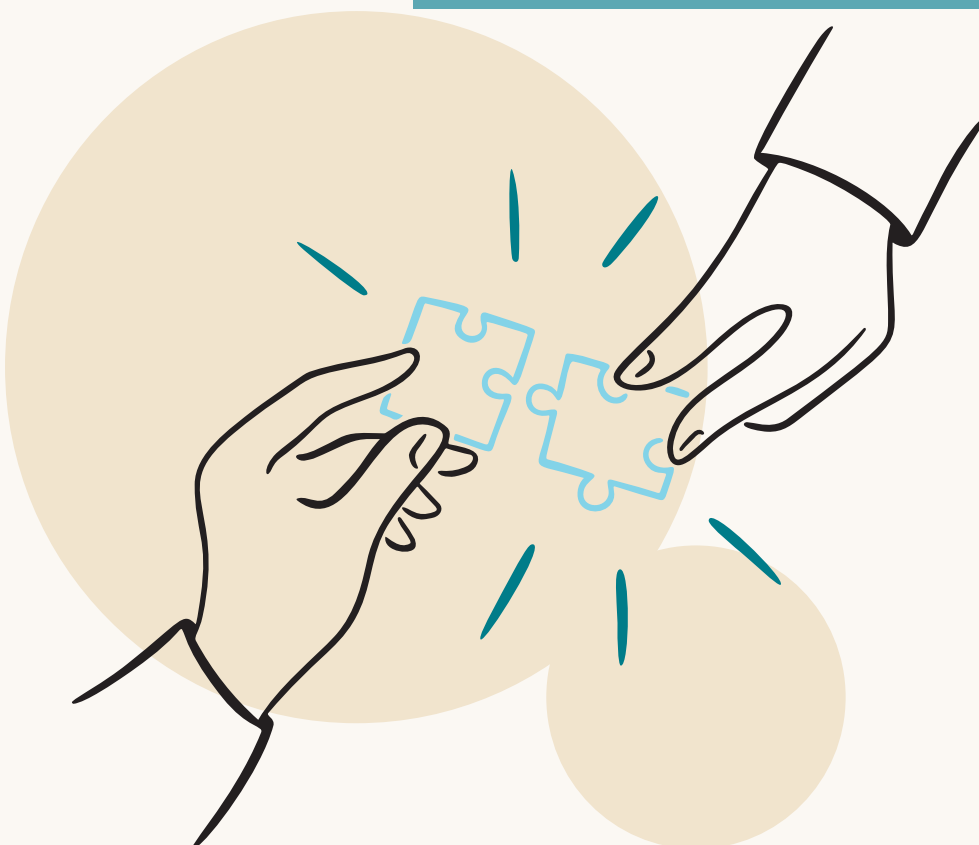
# Taking steps – what you can learn from Clonmany

## Get in contact with FoodCloud

As a charity partner to FoodCloud, FoodCloud can support you to:

- **Organise and collect good food that otherwise would be wasted**
- **Connect you with other local organisations involved in food sharing.**

We can also provide resources and education tools to help you start your food sharing project. We will make sure your project includes everyone in the community working together for a world where no good food goes to waste.



# Limerick Island Community Partners

Further information and resources:



[foodcloud](#) ↗

[ildn.ie/directory](#) ↗

[licp.ie](#) ↗

[mealsonwheelsnetwork.ie/directory-meals\\_on\\_wheels/listing/limerick-island-community-partners](#) ↗

[www.volunteer.ie](#) ↗

[www.midwestsimon.ie/foodbank-food-support/](#) ↗