

Changing the Story

Irish charities supporting
communities through
sharing surplus food



Contents Page

Clonmany Community Pantry, Co Donegal	04
Building a community around food waste education	04
Key impacts of Clonmany Community Pantry	07
Impact on environment and community	08
Challenges for Clonmany	12
Taking steps – what you can learn from Clonmany	14

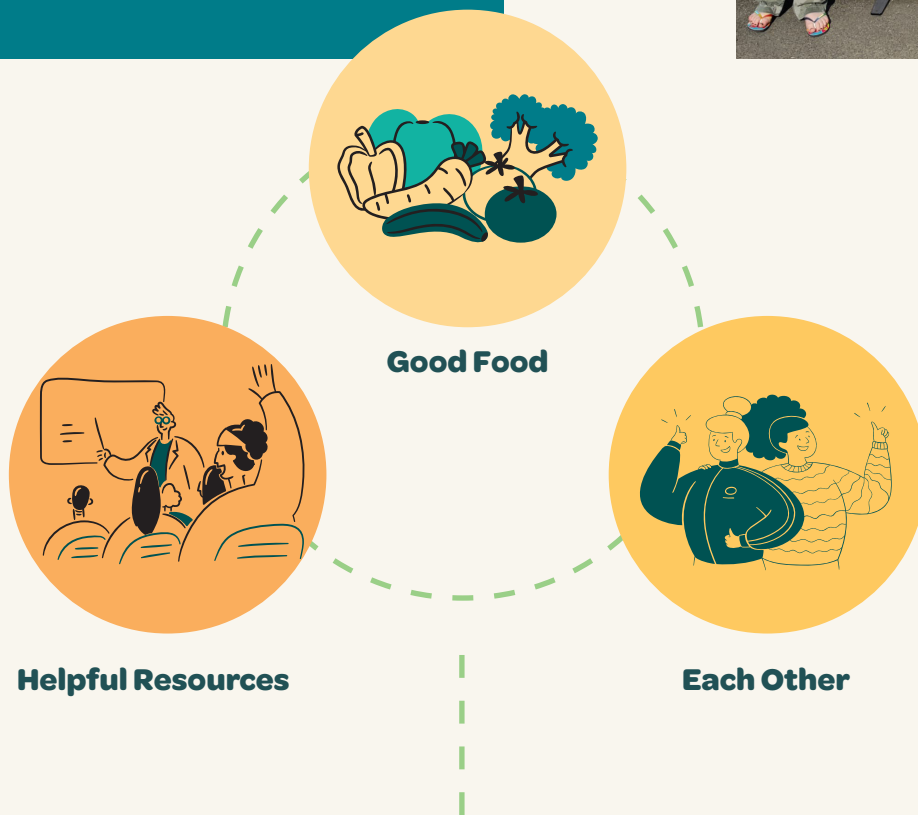


Key words (a-z)	Explanation
Empower	To give someone more control and power over their situation.
Food sharing	Sharing good food for free or low cost, instead of wasting it.
Foodbank	A non-profit, charitable organisation that shares donated or surplus food with people in need.
Social enterprise	Businesses that work to improve the lives of people.
Social supermarket	A shop that sells food more cheaply than retailers to those who are living on low-incomes or experiencing poverty.
Surplus food	Good food that, if not used soon, will go to waste.
Sustainable	Something that can continue for a long time without having a harmful impact.
Wrap-around services	Additional services to support a person's wellbeing like counselling and financial advice.

Clonmany Community Pantry

Building a community around food waste education

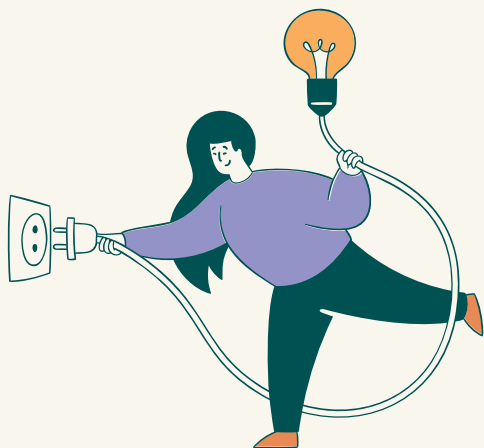
Clonmany Community Pantry aims to connect people to:



The Pantry builds a sense of community and supports people to get involved with food sharing.



Overview



Clonmany Community Centre first had the idea for the Community Pantry in 2018, after learning about FoodCloud.

Working with FoodCloud, Clonmany Community Centre took the first step in a long-term plan to tackle:



food waste



lack of awareness about good usable food



poverty

The staff at Clonmany Community Centre were also inspired by **ChangeMakers Donegal**. This group highlights the United Nations' Sustainable Development Goals. These goals are about all countries, poor, rich and middle-income, coming together to call for action around social and economic equality. While doing this they also aim to protect the planet.



The Community Pantry's vision grew to include improving community:



Health



Well-being



Environment

The Community Pantry connects people with each other and gives them access to good food and helpful resources. The focus is on food sharing, rather than food donations. The Community Pantry introduced practices to reduce food waste and offered the community education on food sharing. It aims to show the positive impact this has on:



Individuals



the community



Climate change

The Pantry is open
Monday - Thursday 10am to 4pm
Friday - Saturday 10am to 2pm



Key Impacts of Clonmany Community Pantry



The project is growing naturally

The community is pushing this project onwards and helping it develop into something more. Clonmany Community Pantry now partners with local farmers who have produce to share like vegetables and extra eggs.



The Pantry also takes vegetables that the farmers cannot use, like wilting lettuce and spinach and gives it to pet owners. Locals meet up, swap seeds, plants and recipe ideas. They share information on how to grow, where to grow and how to look after vegetables and plants.



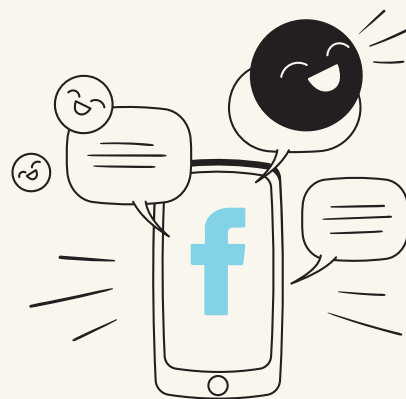
Local people & businesses work together

Clonmany Community Pantry uses FoodCloud services to get food for sharing. It also brings in small local producers to donate surplus food. This shows how important it is for local people and businesses to work together to cut food waste in the community.



Clonmany Community Pantry is open to the entire community

The Clonmany team encourages people to use this service and to tell family and friends about it. The Pantry is stocked weekly and the team puts live posts on Facebook to let the community know what goodies arrive!



Pantry reduces stigma of sharing surplus food

The Pantry is open to the entire community. This changed the donor-recipient charity model. It means that surplus food is for everyone. This reduces the stigma for people who may need more help than others.

Community Pantry: sustainable food for all

The Community Pantry Project is not about people's needs. The project is about giving people sustainable food choices.

The Community Pantry members sign up to the Pantry's vision. The vision is mainly about people using up food as much as possible and protecting our planet. The membership fees are put back into the Pantry. This helps the Pantry to become a more sustainable project for the community.



Impact on environment and community

The main goal of the Pantry's model is to benefit the environment and the community, rather than meeting individual needs.

Clonmany Community Pantry

the pathway to sharing surplus food



Joining Foodcloud in 2019

The first thing Clonmany Community Pantry did was to become a member of FoodCloud and learn how to set up a food sharing project.

26 members in the first year

In Year one, 26 members joined the Pantry. This included:

- families
- individuals
- schools
- organisations



More people started to become interested in the Pantry model. **Donegal Food Response Network** asked the Clonmany team to join their network. This helped to spread the word about the Pantry and what it did. People's interest grew about:

- the Pantry
- its message of food sharing
- helping the environment.

Clonmany became inspired by ChangeMakers Donegal

After talking to a group called ChangeMakers Donegal, the Clonmany team wanted to connect people with healthy food. The aim was to help people learn about food and the value of food sharing. The Pantry model now works on getting people to understand that our habits and the way we think about food and how we use food impacts the environment.

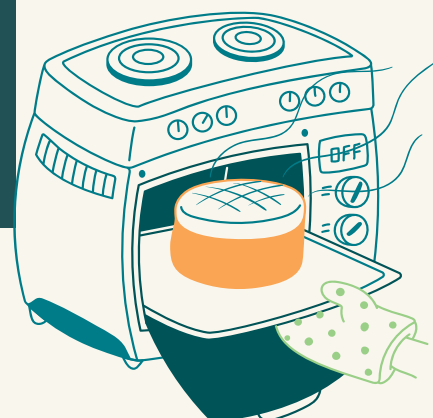


Clonmany connects with local producers

Farmers heard about what Clonmany Community Centre was doing through word of mouth and social media. Local farmers started to feed their animals on vegetables that were available as left-overs in the Pantry. This food was no longer usable for human consumption. This meant there was reduced waste.

People come to the Pantry and swap recipes and seeds

Now when locals meet at the Pantry, they swap jams made from surplus fruit! It has got to this stage naturally. People started baking at home from items they had swapped with others at the Pantry. They then took the baked goods back to the Pantry to share.





People started growing fruit and vegetables with the seeds they got from others. They would bring the fresh fruit and vegetables to the Pantry as well. People wanted to be part of the Pantry by contributing to it as well as getting products from it.

Clonmany Development Committee helped with space and funding

The Clonmany Development Committee helped the Pantry with getting space and funding. This allowed the Pantry to increase its services, especially around food and food sharing, for example:



Community Gardens



Community cafe

They also increased its staff and number of volunteers.



Challenges for Clonmany



“At a time when the focus was on foodbanks, getting the message right has been crucial to the success of the Pantry.”

The Pantry was opened during the COVID-19 pandemic, and social distancing helped this type of model to succeed.

Focus on sharing surplus food

The Clonmany team worked hard to make sure their message of ‘sharing surplus food’ did not get lost. They wanted to avoid people thinking they provided hand-outs or charity. The Pantry offers people positive and hopeful ways to:



Access surplus food



Share food



Offering goods at low cost

The Pantry has always been about creating a positive impact for the community. It was difficult to think about charging people to use the Pantry. The team wanted people to feel part of something and know that they were bringing about positive changes.

They worked on this vision and eventually set up a small yearly membership fee and Pantry brand bag fee. The users welcomed this. It meant they were contributing to the community centre and helping to fund other learning opportunities in the centre like



Cooking Courses



Crafting

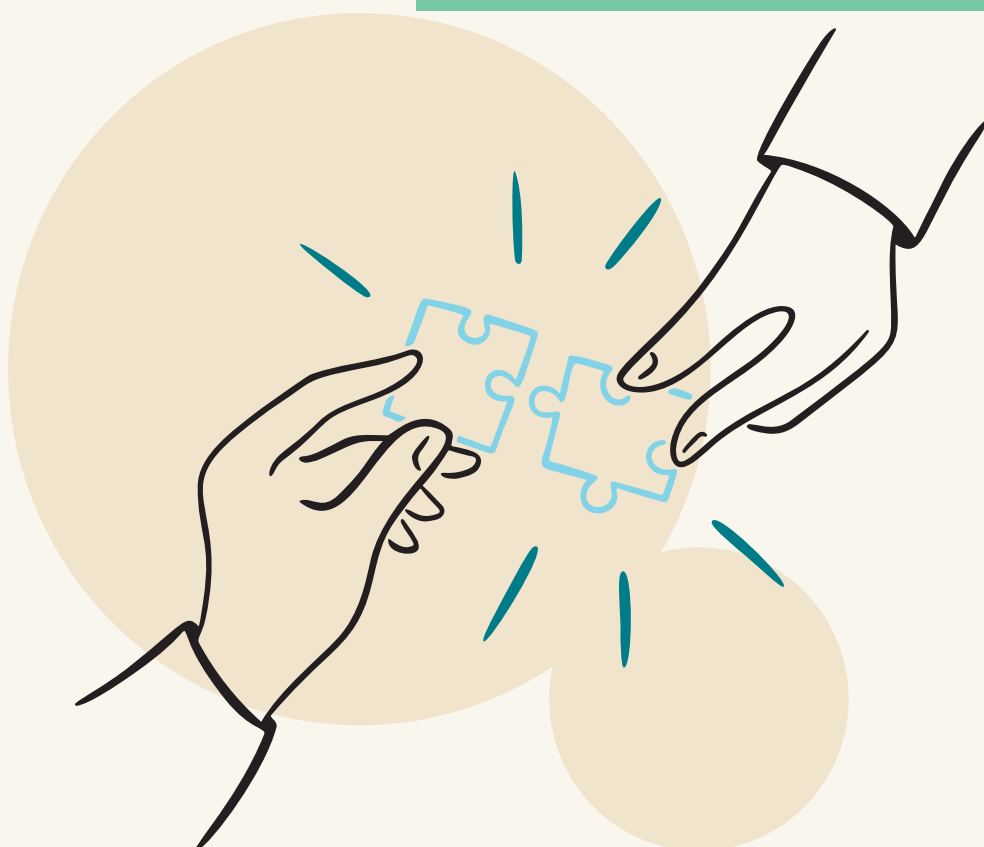
Taking steps – what you can learn from Clonmany

Get in contact with FoodCloud

As a charity partner to FoodCloud, FoodCloud can support you to:

- **Organise and collect good food that otherwise would be wasted**
- **Connect you with other local organisations involved in food sharing.**

We can also provide resources and education tools to help you start your food sharing project. We will make sure your project includes everyone in the community working together for a world where no good food goes to waste.



Clonmany Community Pantry

Further information
and resources:



[foodcloud](#) ↗

[clonmanycommunitycentre.ie](#) ↗

[clonmanycommunitycentrecommunity-pantry](#) ↗

[changemakers.ie](#) ↗

[inishowen.ie/community-food-initiative](#) ↗

[donegalfoodresponse.ie](#) ↗