

Wonderful logistics center™

2902 EXPRESS AVENUE , SHAFTER , CA 93263



FOR LEASE / ±1,016,997 Sq. Ft.

Delivery Q1 2027

For more information, please contact:

Joe Vargas

+1 661.653.3192

joe.vargas@wonderful.com

Jason Gremillion

+1 661.369.5176

jason.gremillion@wonderful.com

Erin Poulson Morris

+1 404.668.0479

erin.poulson.morris@wonderful.com

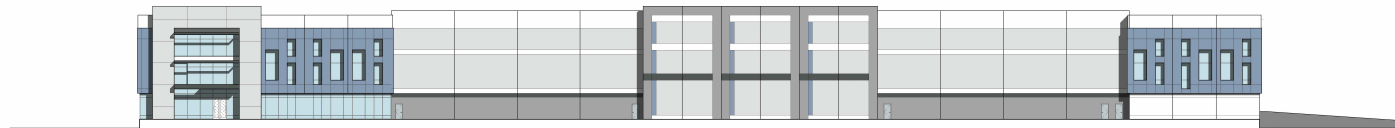
Elevation



1 WEST ELEVATION - EXPRESS WAY
1" = 20'



2 SOUTH ELEVATION
1" = 20'



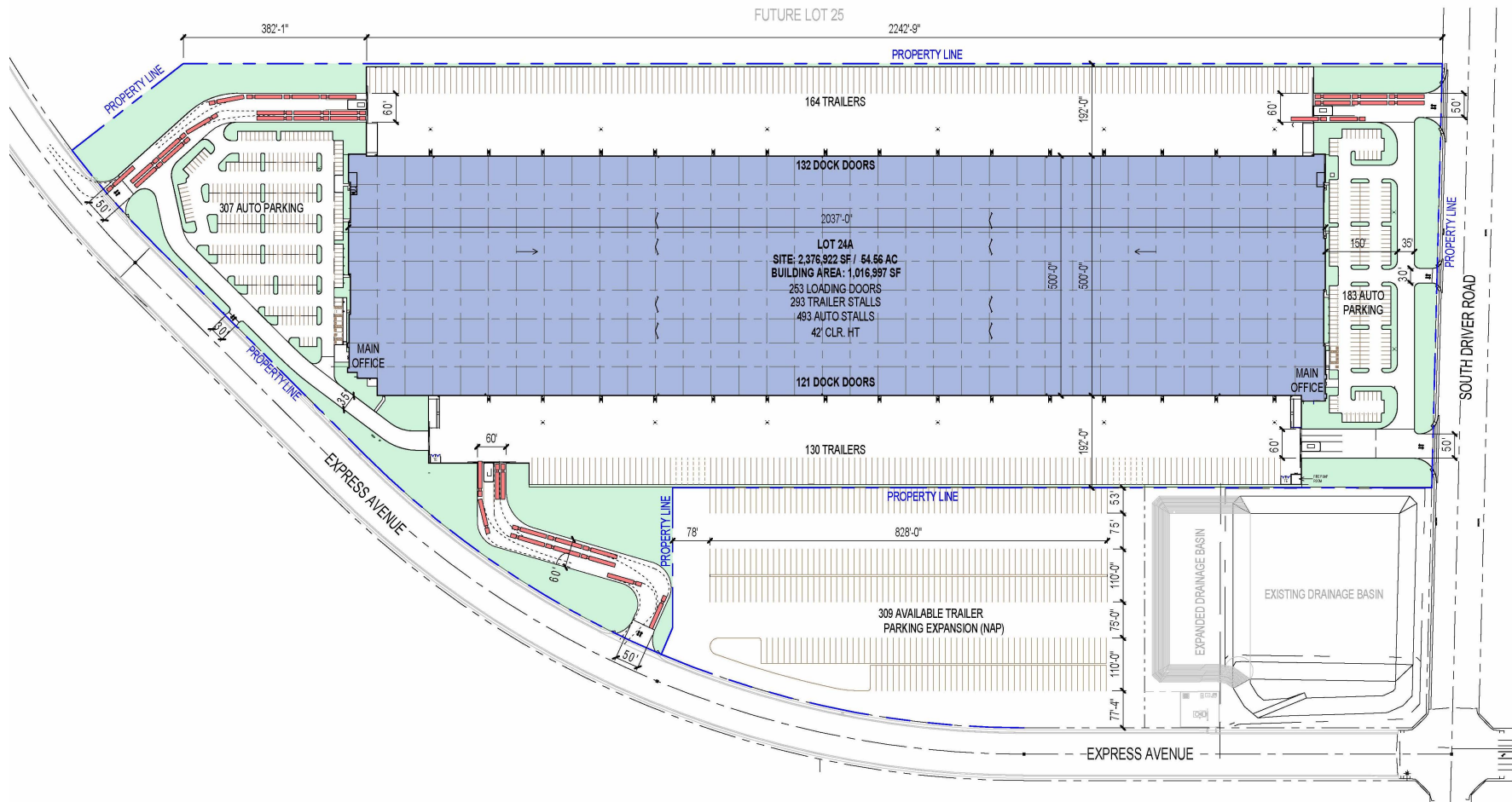
3 EAST ELEVATION - DRIVERS ROAD
1" = 20'



4 NORTH ELEVATION
1" = 20'



Site Plan

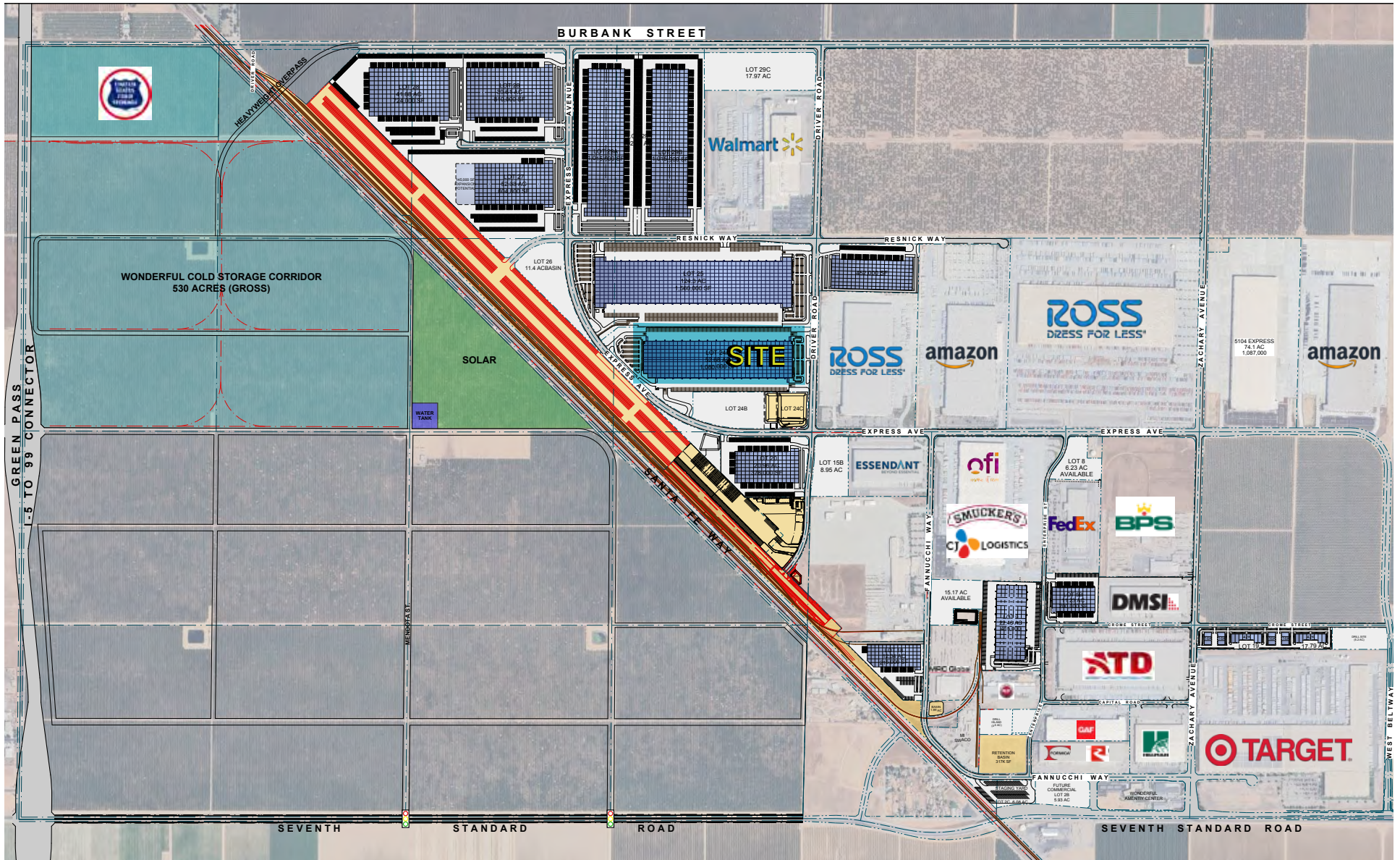


Wonderful logistics center™

2902 EXPRESS AVENUE, SHAFTER, CA 93263

FOR LEASE / ±1,016,997 SQ. FT.
Delivery Q1 2027

Location





Less than 1-day truck service to >60MM customers, 7 states and 3 major ports. 2-day truck service to 11 states.



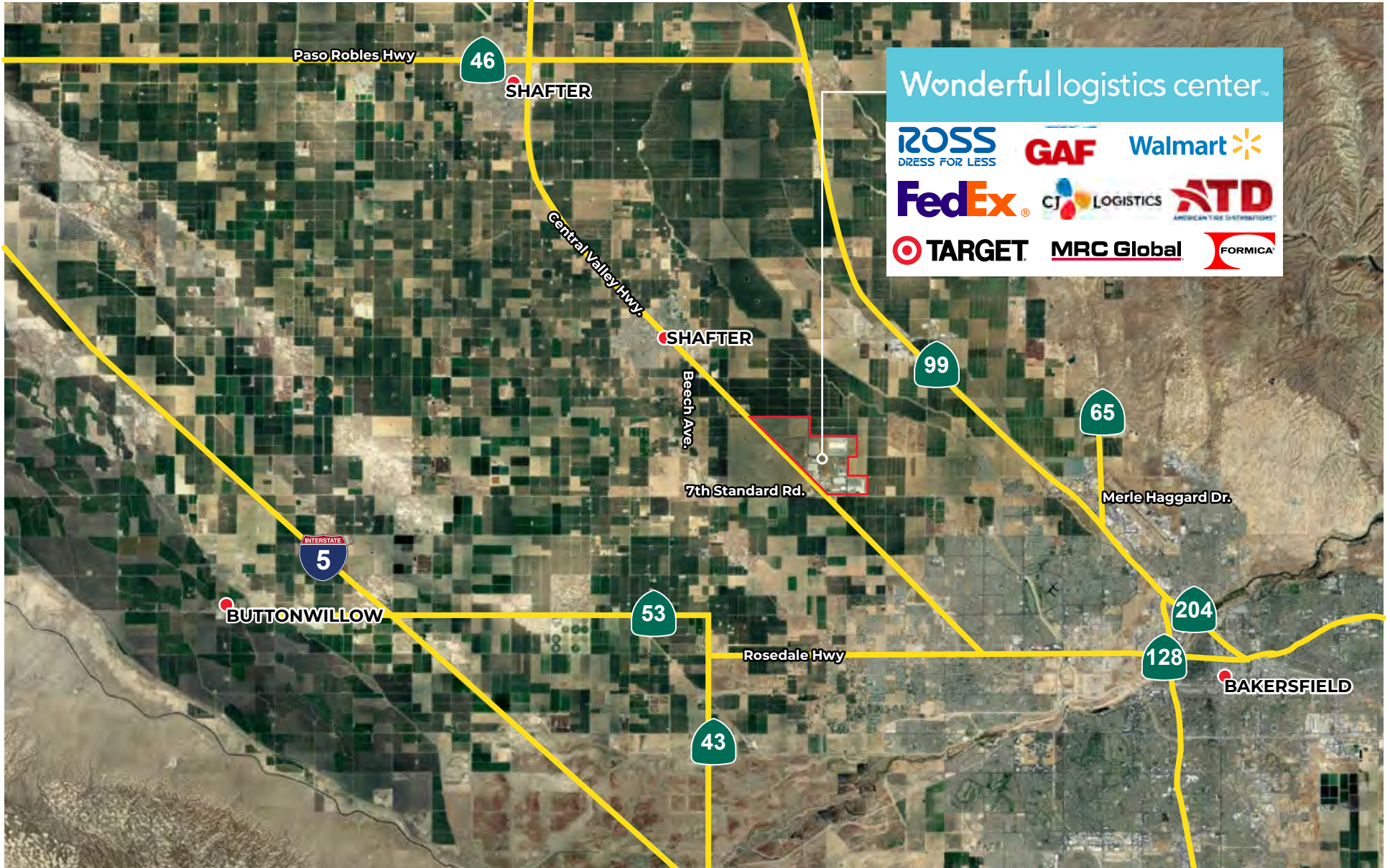
About the County

Kern County's transportation, logistics and advanced manufacturing industry has grown significantly in the past decade, thanks to companies like **Frito-Lay, Amazon, Target, Ross, American Tire Distributors, IKEA** and **Famous Footwear**. The industry employs over 14,000 people in key segments of distribution across 50 different distribution centers. Kern County's location provides for an easy, one-day turnaround trip to California's largest population concentrations, which include San Diego, Los Angeles, Sacramento and the Bay Area, as well as Las Vegas.

Wonderful logistics center™

2902 EXPRESS AVENUE, SHAFTER, CA 93263

FOR LEASE / ±1,016,997 SQ. FT.
Delivery Q1 2027



Wonderful logistics center™

2902 EXPRESS AVENUE , SHAFTER , CA 93263

FOR LEASE / ±1,016,997 Sq. Ft.
NOW COMPLETE

For more information, please contact:

Joe Vargas

+1 661.653.3192

joe.vargas@wonderful.com

Jason Gremillion

+1 661.369.5176

jason.gremillion@wonderful.com

Erin Poulson Morris

+1 404.668.0479

erin.poulson.morris@wonderful.com

Wonderful Real Estate Development | 4050 7th Standard Rd | Shafter, CA 93263 | wonderfullogisticscenter.com

Wonderful real estate
DEVELOPMENT™

WONDERFUL REAL ESTATE DEVELOPMENT

©2025 Wonderful Real Estate Development. All rights reserved. The information contained in this communication is strictly confidential. This information has been obtained from sources believed to be reliable but has not been verified. NO WARRANTY OR REPRESENTATION, EXPRESS OR IMPLIED, IS MADE AS TO THE CONDITION OF THE PROPERTY (OR PROPERTIES) REFERENCED HEREIN OR AS TO THE ACCURACY OR COMPLETENESS OF THE INFORMATION CONTAINED HEREIN, AND SAME IS SUBMITTED SUBJECT TO ERRORS, OMISSIONS, CHANGE OF PRICE, RENTAL OR OTHER CONDITIONS, WITHDRAWAL WITHOUT NOTICE, AND TO ANY SPECIAL LISTING CONDITIONS IMPOSED BY THE PROPERTY OWNER(S). ANY PROJECTIONS, OPINIONS OR ESTIMATES ARE SUBJECT TO UNCERTAINTY AND DO NOT SIGNIFY CURRENT OR FUTURE PROPERTY PERFORMANCE.