

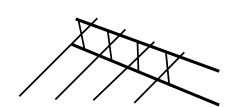
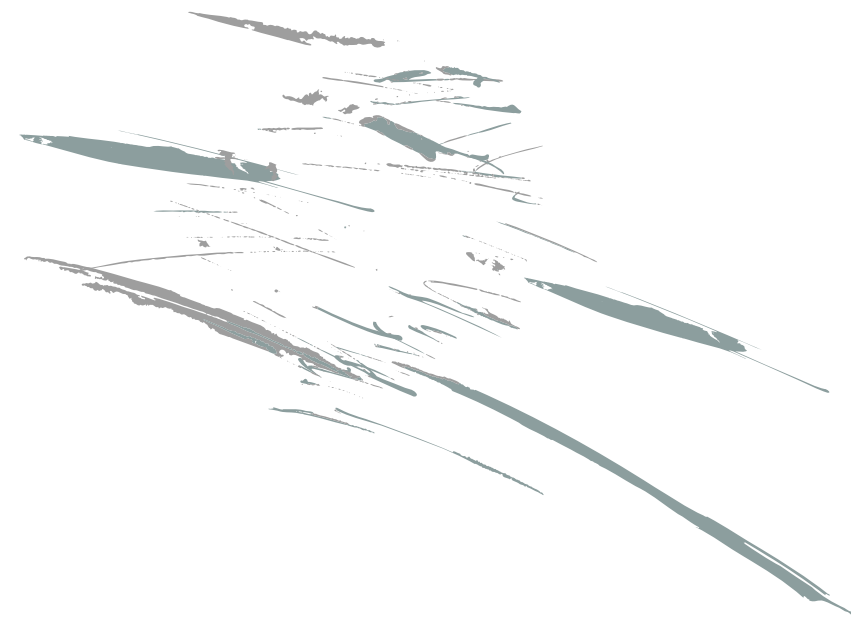
4 authentic parisian spaces for rent in the heart of the city

PHOTO SHOOTING / MOVIE SHOOTING / SHOWROOM / EVENT / SEMINAR



About us

Explore Artefact Paris: Unique Studios in a Stunning Passage Near Bastille. Four distinct studios await, each brimming with its own charm. These atypical spaces, totaling 750 sqm, boast a shared common area. With a majestic glass roof and expansive artistic ambiance, this exclusive venue is perfect for hosting your events, photo shoots, and film productions.



Why choosing Artefact Paris?

Unconventional Studios

Each of Our Three Studios offers a unique identity.
Find the perfect match for your project.

Artistic inspiration

Elevate your project with an artsy touch in our
immersive and exceptional spaces.

In the heart of Paris

Located in the heart of Paris, our space is easily
reachable for your clients, event participants and co-
workers.

Partner's network

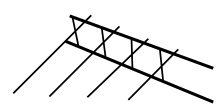
Enhance your project with our curated network of
diverse service providers.

Versatility

Our spaces are tailored to your vision, allowing you
to transform them into a unique decor for your
project.

Cozy & Connected

Each studio features wiFi and heating.



Our versatile spaces

Artefact Paris offers an extraordinary 750 sqm venue near Bastille, featuring four distinct studios, each with its own unique ambiance, along with a central studio and common areas.



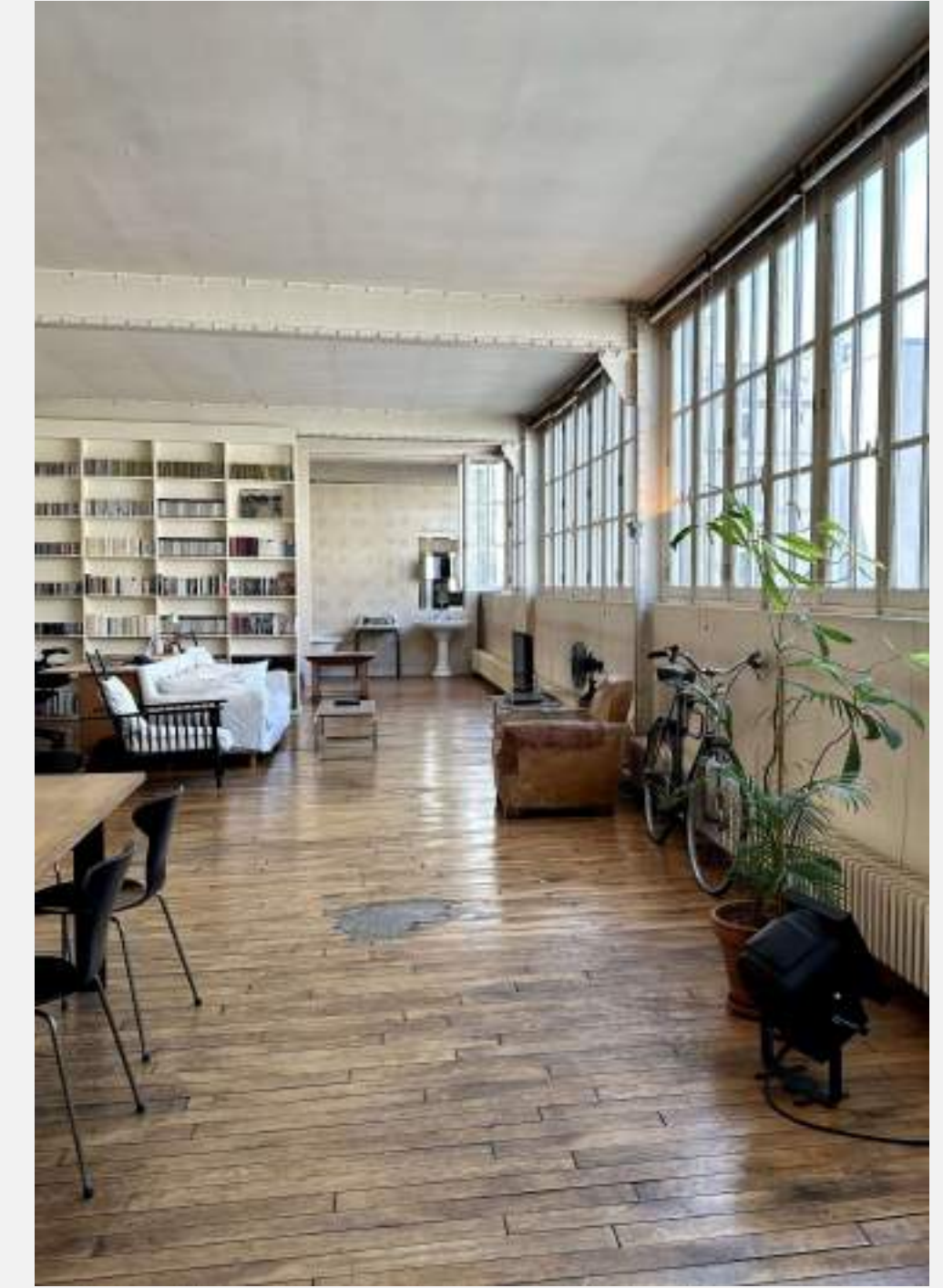
LUMIÈRES STUDIO



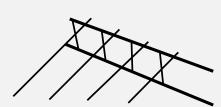
AUTHENTIQUE EIFFEL STUDIO



SUR COUR STUDIO



LOFT STUDIO



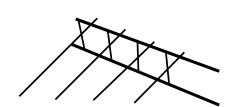

STUDIO 1

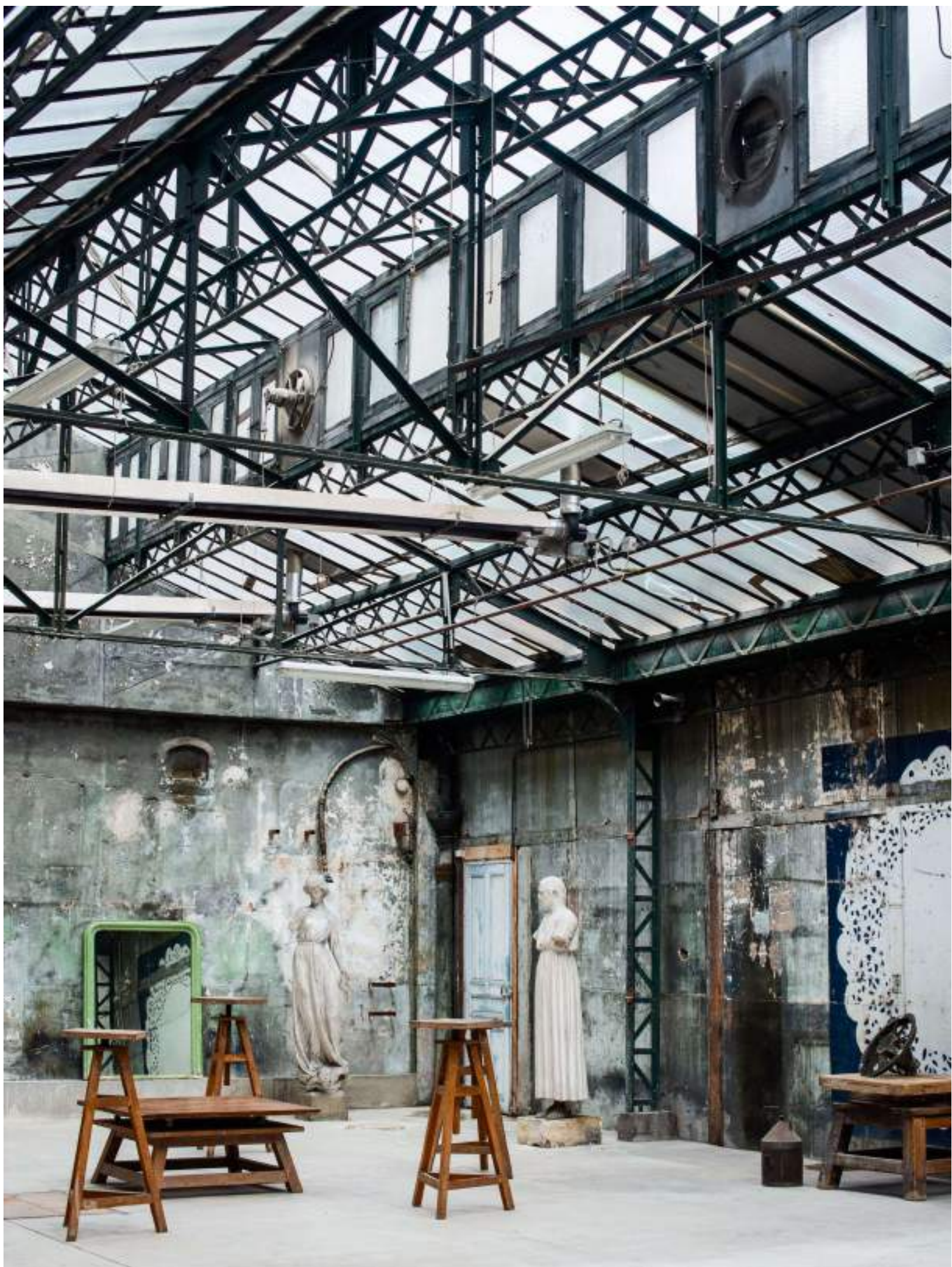
Authentic Eiffel

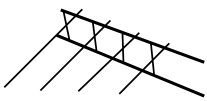
The authentic Eiffel studio stands out as the masterpiece, exuding a unique aura that captivates. This space is a relic of industrial history, constructed in 1850, concealing a stunning glass roof designed by Gustave Eiffel



280 sqm
Ground Floor

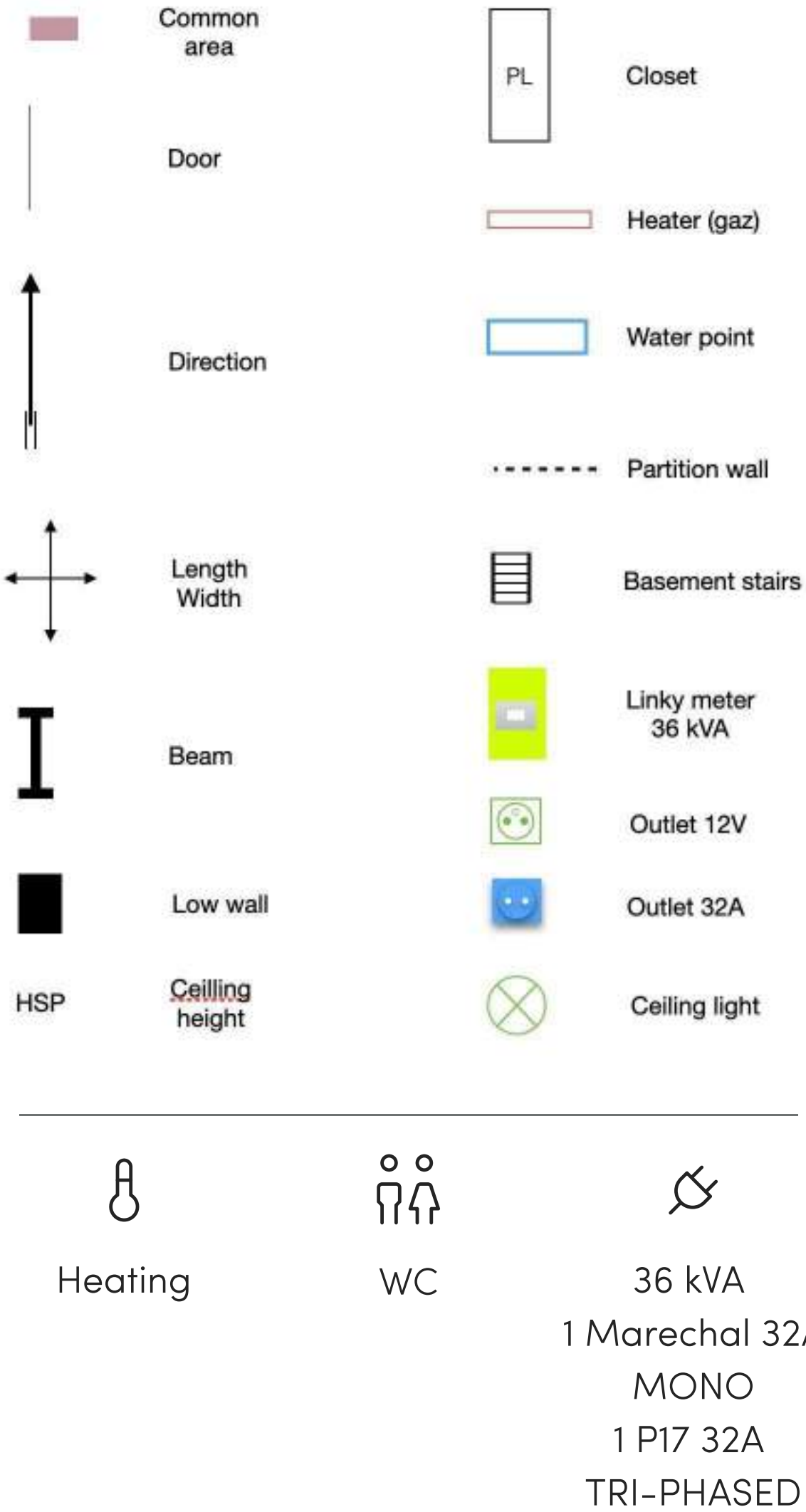








Minimum Height : 3m30
Maximum Height : 6m30



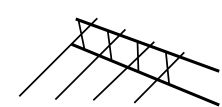

STUDIO 3

Cour

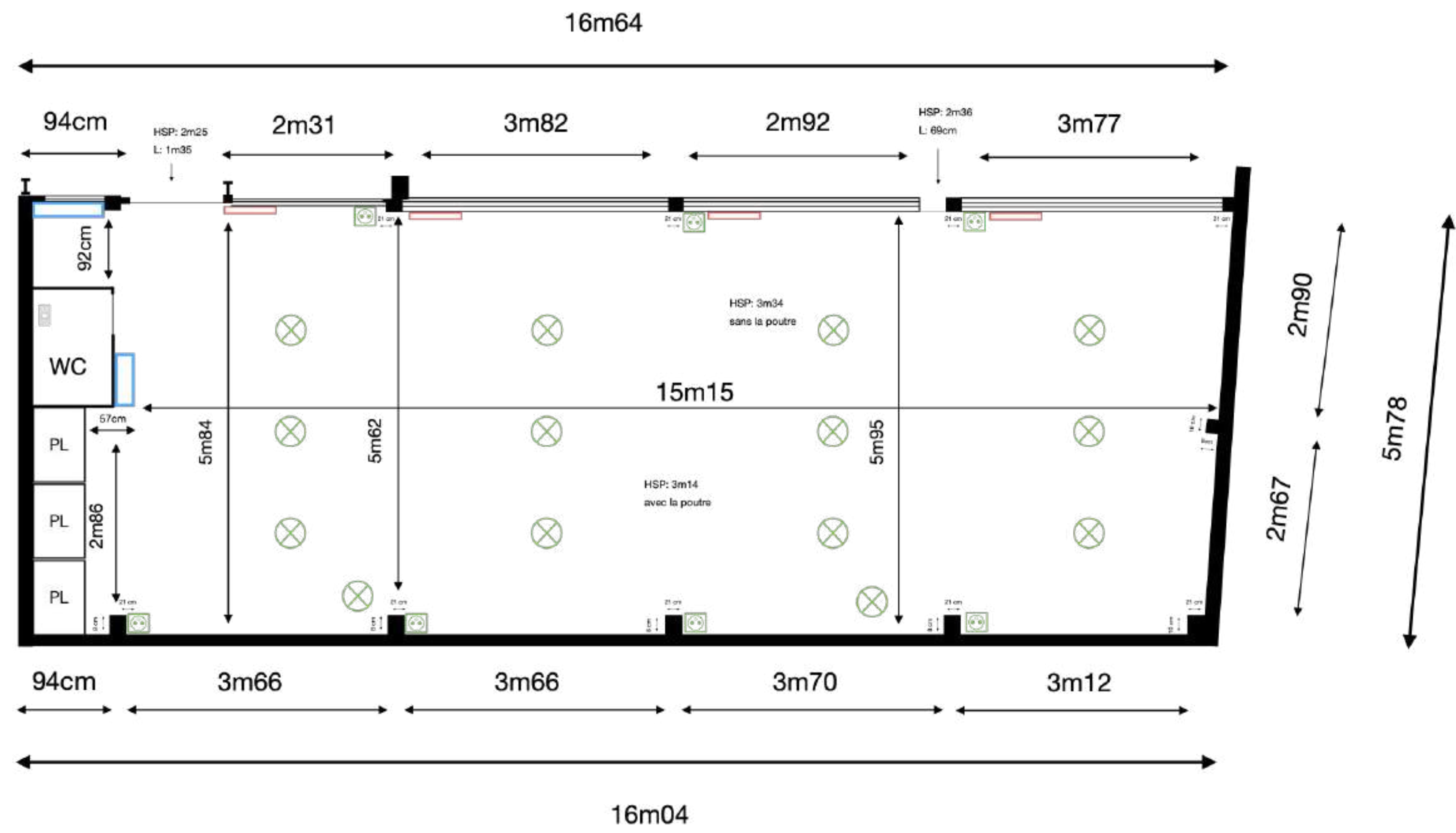
This artistic haven, steeped in craftsmanship and artistry, stands out with its serene atmosphere, sleek white walls, and a picturesque view of a tree-lined courtyard. Nestled on the ground floor, it exudes a tranquil charm



100 sqm
Ground floor







Minimum height : 5m62
Maximum height : 5m95

Door

Length
Width

Beam

Low wall

Prise 12V

Ceiling light

Heater

Water point

Disjumper

Window

HSP

Heating

WC

60 amps

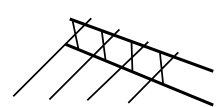

STUDIO 2

Lumières

This inviting space, bathed in natural light, boasts period parquet flooring and offers a panoramic view of the authentic Eiffel Room's glass roof through expansive windows. Once occupied by craftsmen of the Faubourg Saint-Antoine, and most recently, artists.

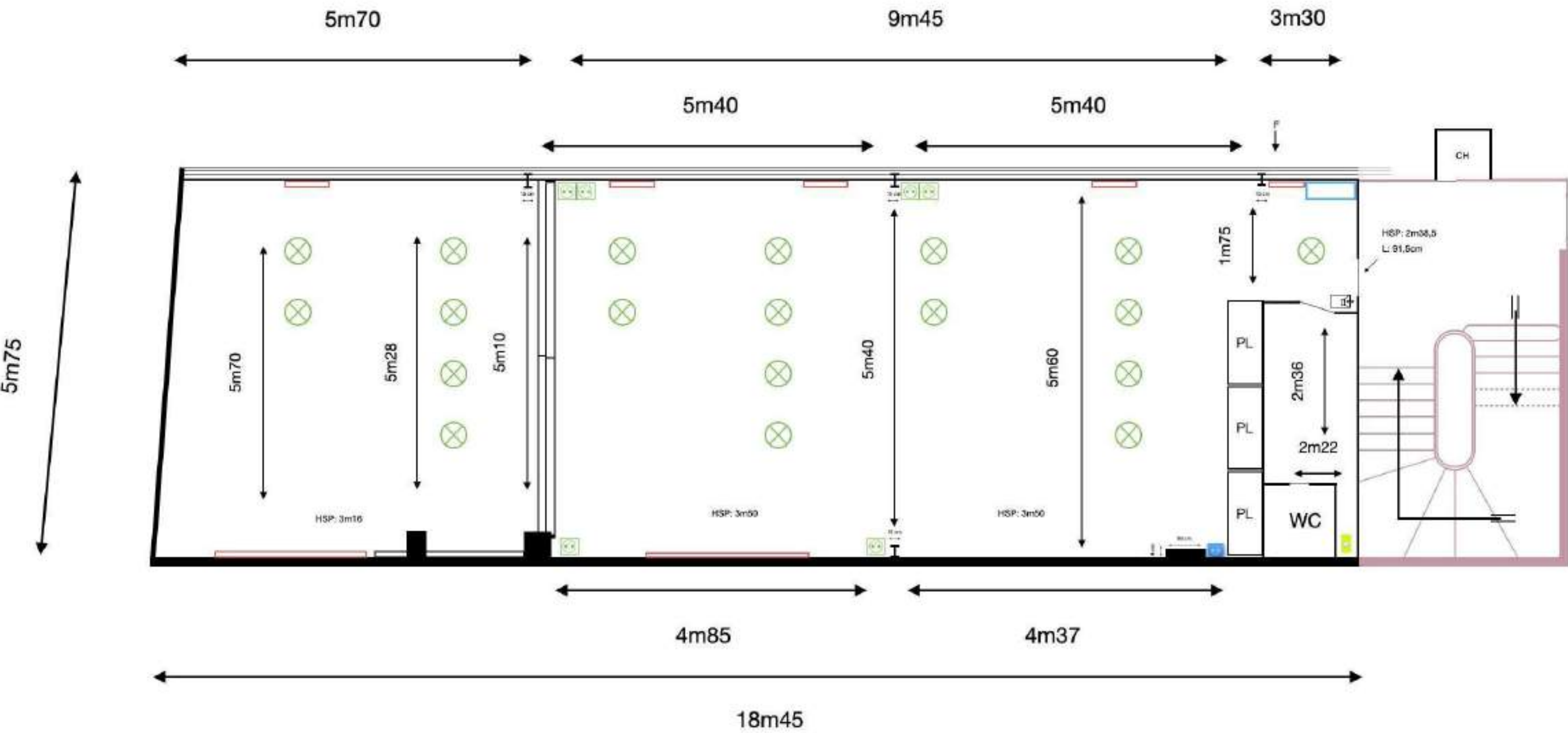


110 sqm
1st Floor









Minimum Height : 3m
Maximal Height : 3m45

	Common area		Closet
	Door		Heater
	Direction		Water point
	Length Width		Interphone
	Beam		Boiler
	Low wall		Ceiling height
	Window		Linky meter 45 amps
			Outlet 12V
			Outlet P17 32A
			Ceiling light

Heating

WC

45 amps
1 P17 32A
MONO

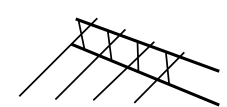

STUDIO 4

Loft

Experience the transformation of a former craftsman's workshop into a stunning living space. This luminous loft merges industrial charm with modern elegance, creating a truly unique atmosphere. Enjoy breathtaking views of the iconic Eiffel workshop's glass roof and the historic industrial chimney, relics that whisper the passageway's storied past. A perfect blend of history and contemporary design, this exceptional space offers an unparalleled living environment.

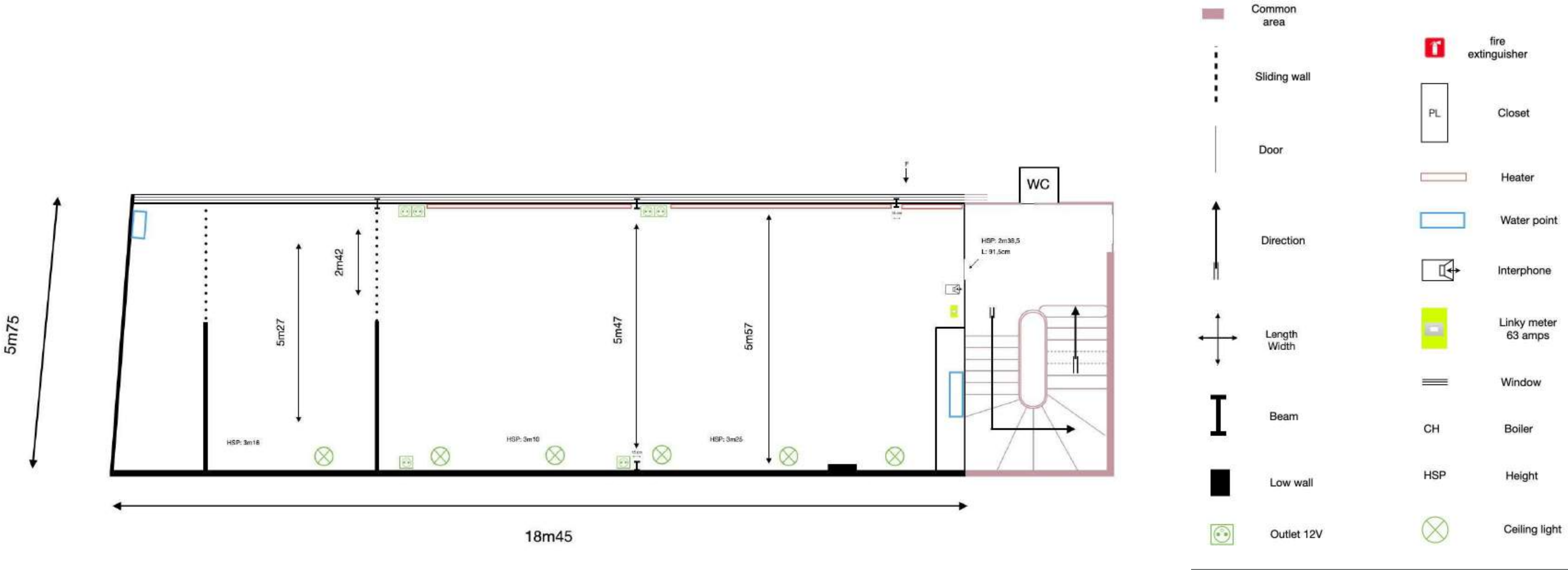


105 sqm
2nd Floor









Minimum Height : 3m10
Maximum Height : 3m25

Heating

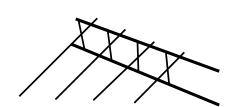
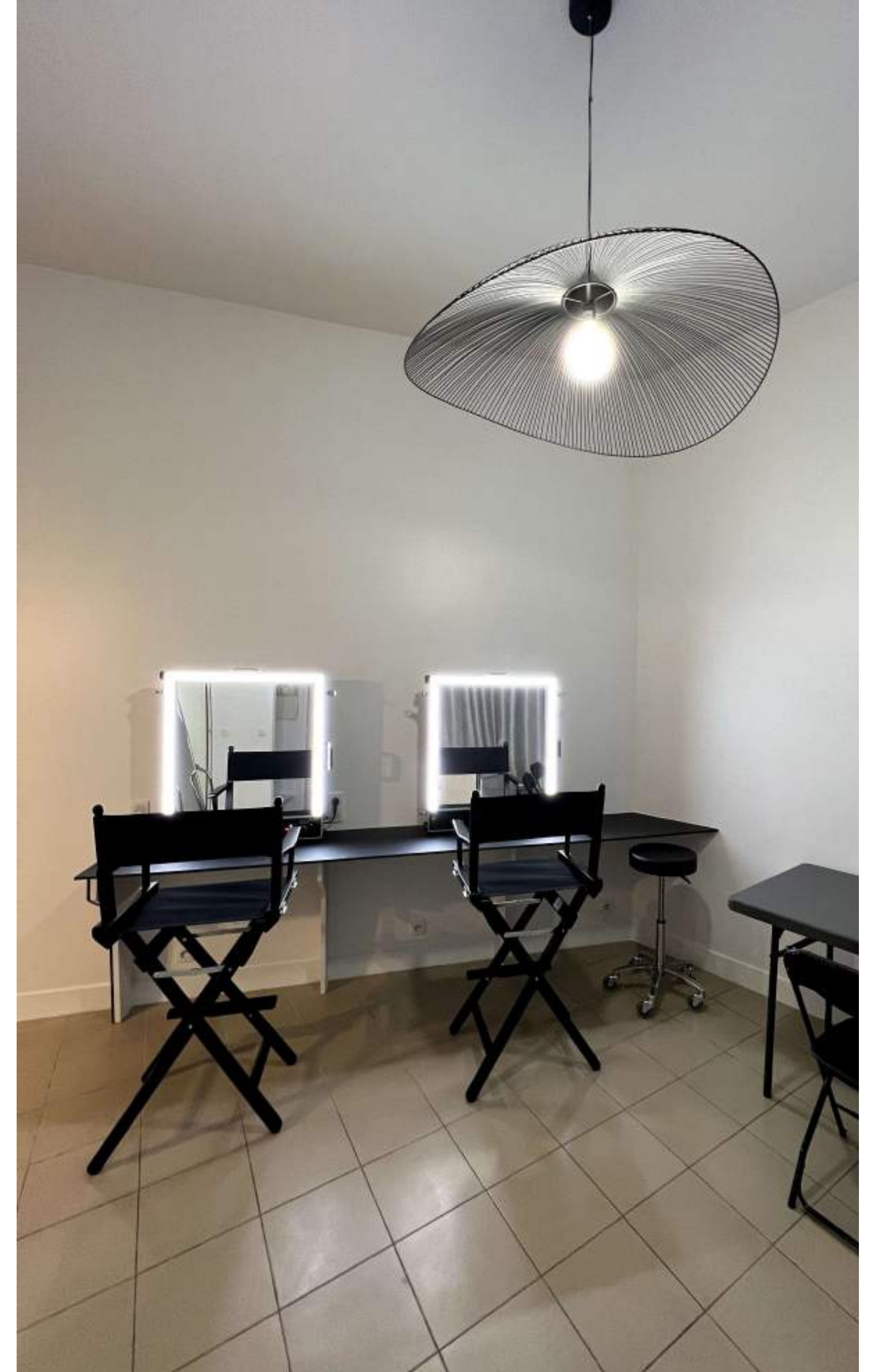
WC

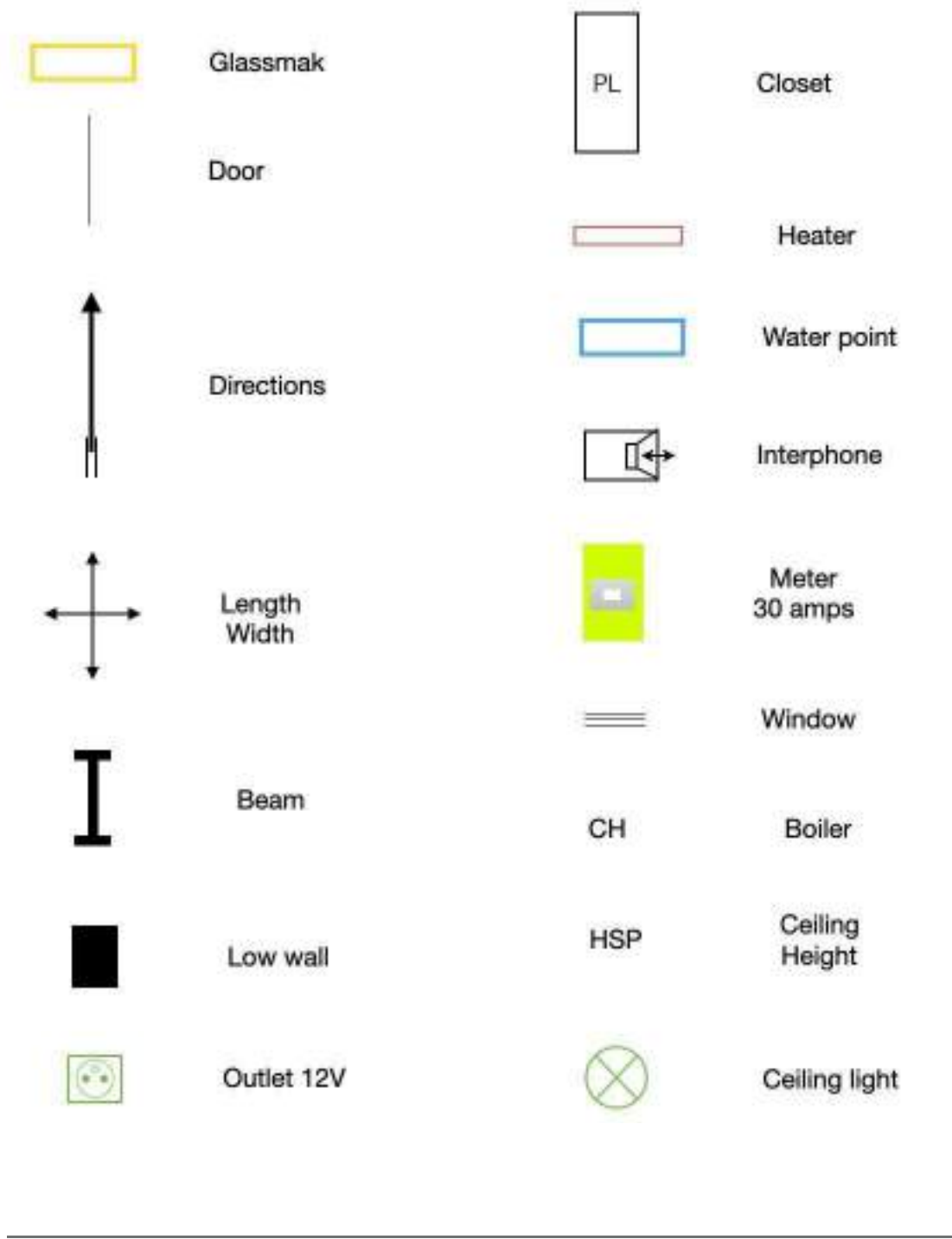
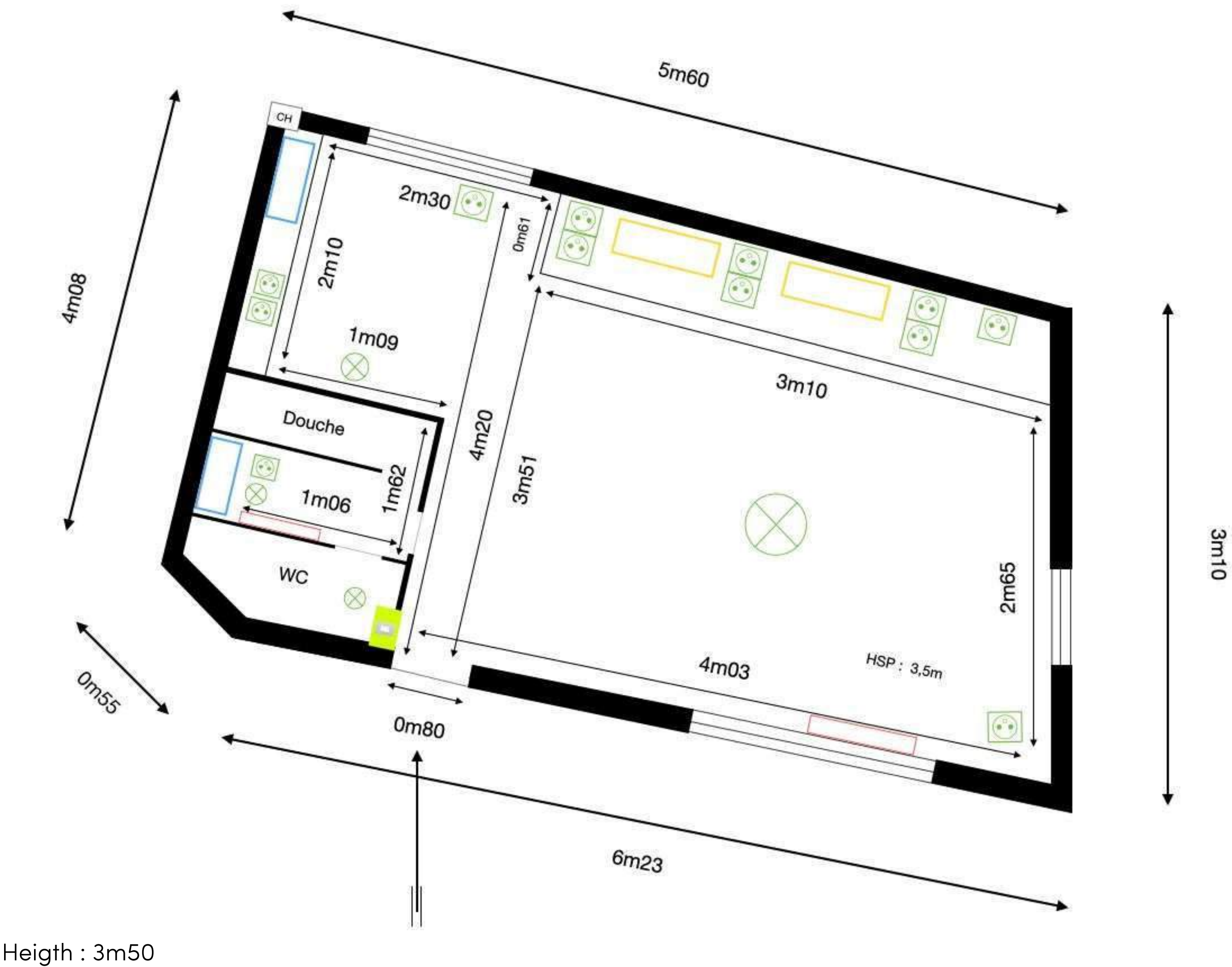
63 amps

Equipped Loge

25 sqm ground-floor

Fully equipped with two GlassMaks, this dressing room is ideal for make-up and to accommodate your muses.





Heating

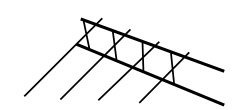
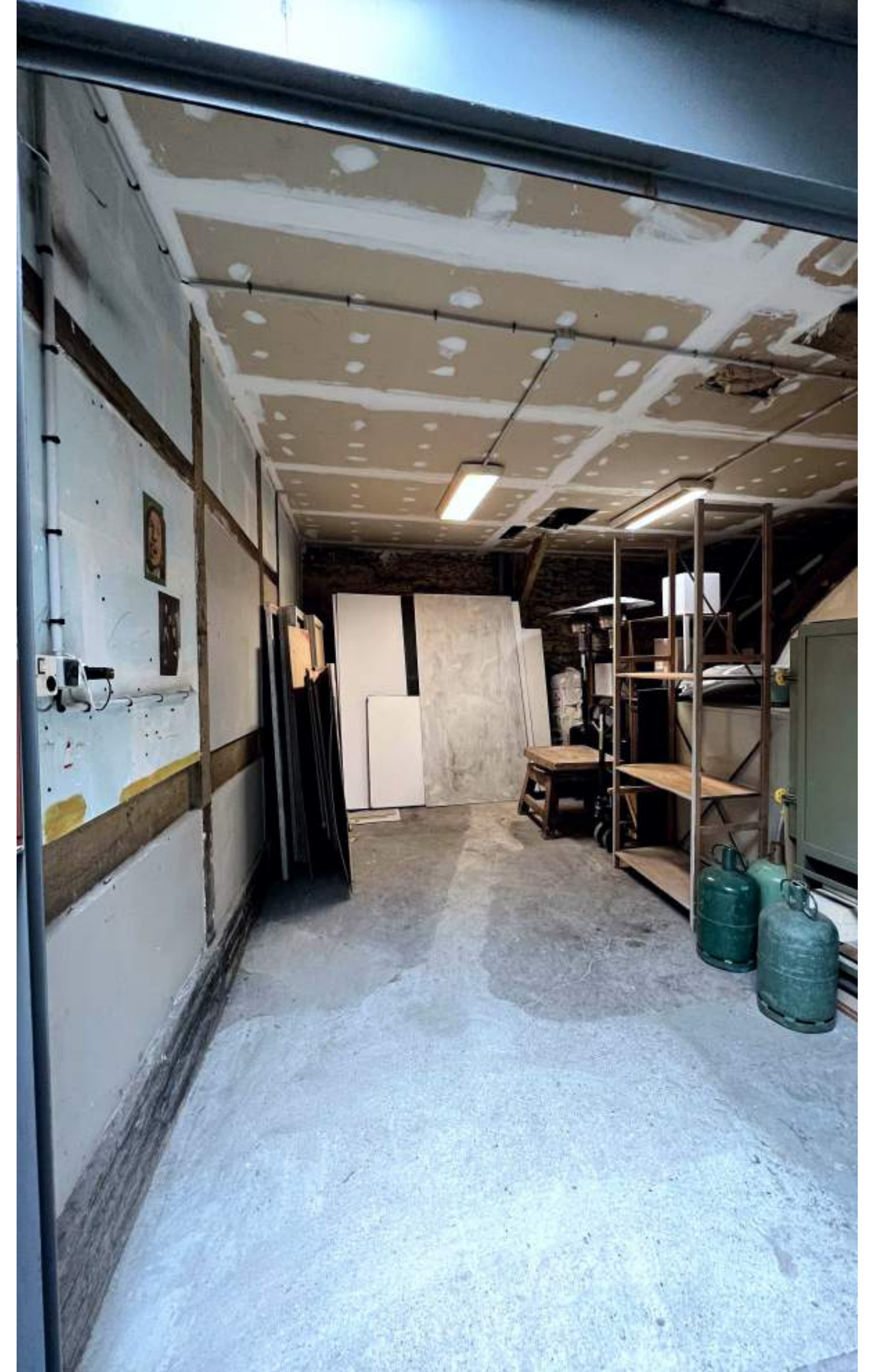
WC

30 amps

Storage Room

40 sqm ground-floor

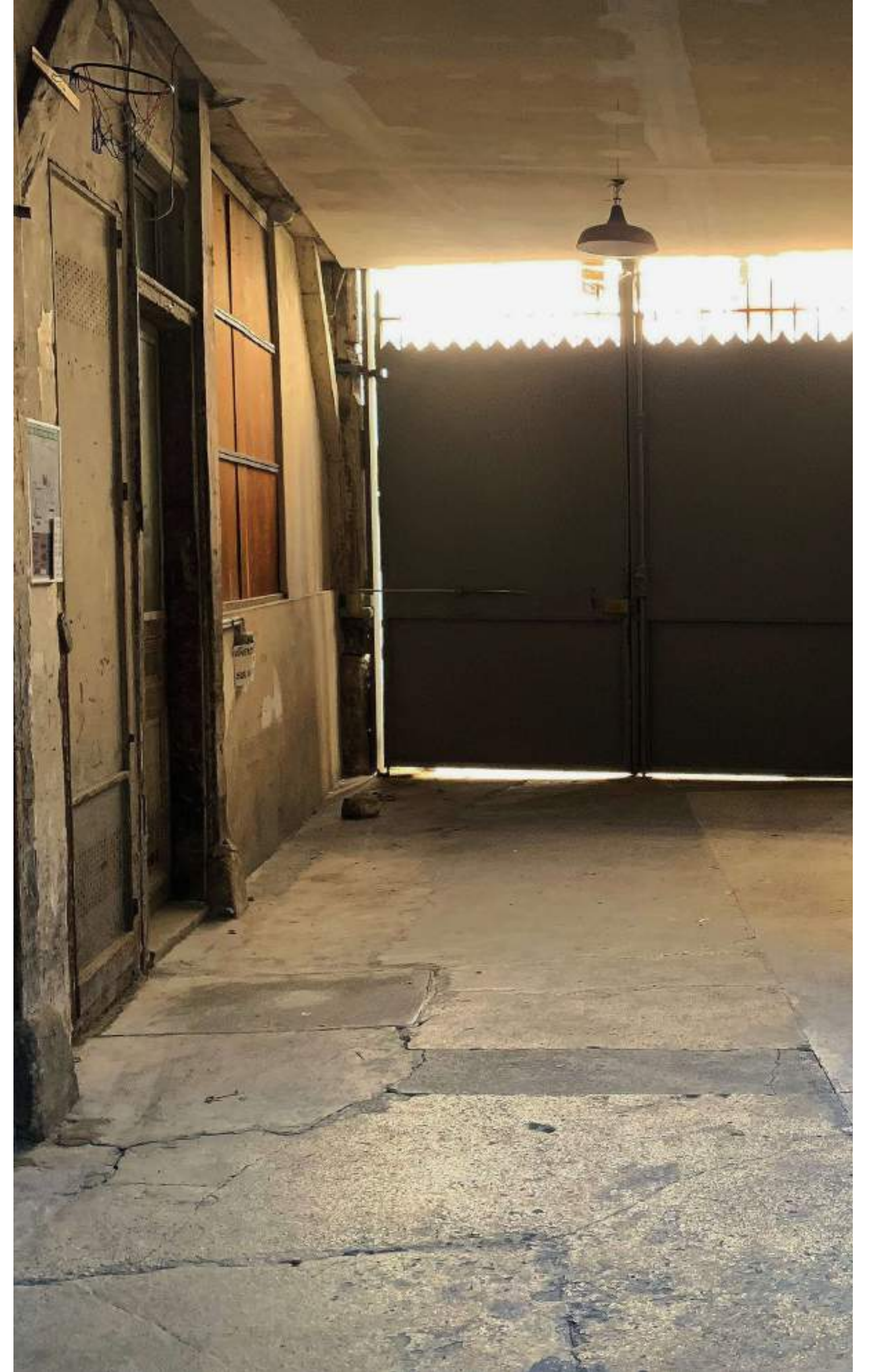
This space is ideal for storing your equipment.



Common Area

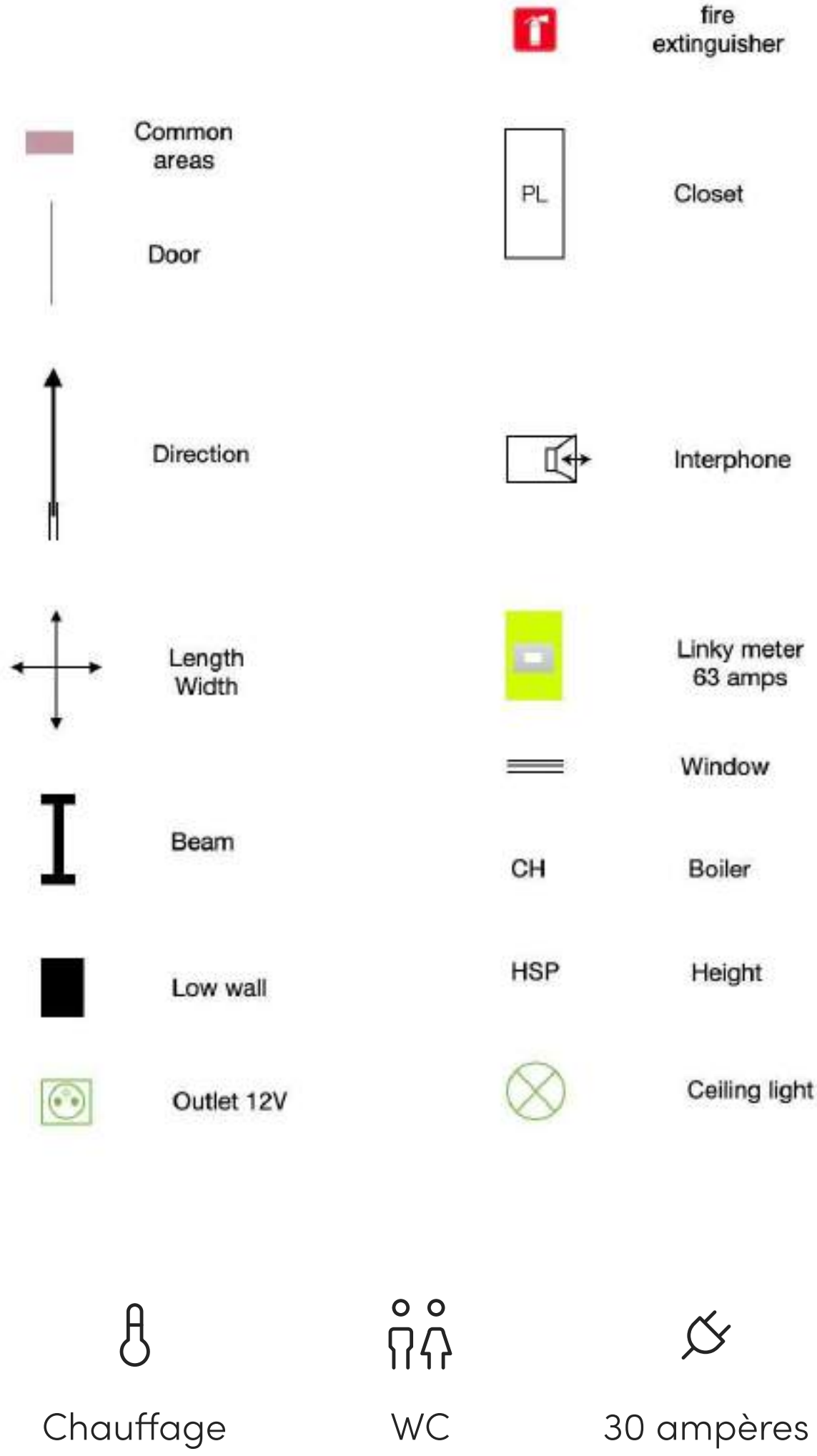
Parties communes RDC (95m²)

Sous autorisation de la copropriété





Minimum height: 3m39
Maximum height: 4m32



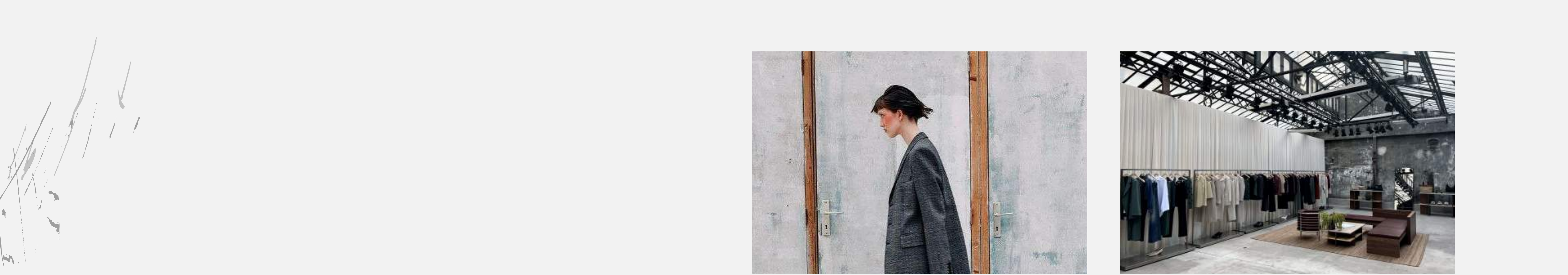


Photo Shooting

Photo studio / Portrait / Fashion photo /
Beauty photo / Product photo

Showrooms

Fashion / Design / Tech



Filming

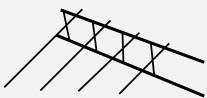
Movies / Series / Documentaries / Clips /
Commercials / Interview

Event

Product launch / Press event / Performance
/ Exhibition / Team building / Seminar /
Lunch & atypical dinner

Exceptional spaces to enhance your events

Artefact Paris stands out as an atypical space, offering a total surface area of 670m² divided into four studios, each with its own personality and unique ambience, as well as a studio and common areas.



14 Passage Lhomme, 75011, Paris

Location

METRO

FAUBOURG SAINT-ANTOINE

8

BASTILLE

8 5 1

BUS

FAUBOURG SAINT-ANTOINE

86

AVENUE LEDRU-ROLLINS

61 76

BASTILLE

91

PARKING

5 PARKINGS NEARBY

Possibility to park one car in
the passage



The 14

In this place steeped in history, a former mirror factory built in 1850, you'll experience an event rich in emotion. Nestled in the Passage Lhomme, between Rue de Charonne and Passage Josset, this address with its industrial and artistic past offers a bucolic atmosphere and a haven of peace in the heart of the capital. We provide parking for one vehicles directly in front of our space.



The passage Lhomme & faubourg St-Antoine

In the heart of Paris's 11th arrondissement, the Passage Lhomme and the Faubourg St-Antoine have long been the stronghold of craftsmen since the 15th century. Until about twenty years ago, the area was home to numerous craftsmen, including upholsterers and stamp varnishers, creating a warm, village-like atmosphere.





Louis Le Cacheux

OWNER & FOUNDER

+33 (0)7 69 58 57 80

contact@artefactparis.com

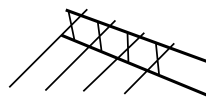


Paul Le Cacheux

CO-OWNER

+33 (0)7 67 06 85 90

paul@artefactparis.com





www.artefactparis.com