



OSHKI-WENJACK

OSHKI-PIMACHE-O-WIN
THE WENJACK EDUCATION INSTITUTE

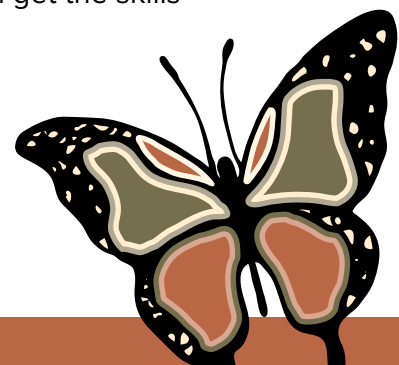
Personal Support Worker Certificate



New Beginnings

Become a Vital Part of the Health Care Team

Do you have the care, compassion, and drive to help people in your community who need help with day-to-day activities? Personal Support Workers (PSWs) are important members of the health care team. They help people with daily tasks such as personal care, home management, and social activities. You'll work with other health professionals to help your clients do what they may not be able to do on their own. Oshki-Wenjack offers this certificate program through a blended delivery model of online courses, in-person lab training skills, and in-person clinical placements in Thunder Bay. You'll get the skills you need for a successful PSW career.



Personal Support Worker Certificate



Program:

1-Year Certificate Program (2 semesters)

Academic Requirements:

- Ontario Secondary School Diploma (OSSD) or equivalent, including Grade 12 English (C/U)
- Successful completion of the Mature Student Assessment
- Successful completion of the General Education Development (GED) Test
- Appropriate credits from the Academic and Career Entrance (ACE) program

Health Requirements:

- Must be fully vaccinated against COVID-19 (2 doses)

Courses:

First Semester

- CS 050 College Writing
- PN 128 Therapeutic Nurse Client Relationships
- PW 100 Fundamental Skills for PSW Practice
- PW 110 Fundamental Knowledge of PSW Practice
- PW 120 PSW Roles and Responsibilities
- PW 130 Anatomy & Physiology

Second Semester

- PW 200 PSW Clinical Practice I
- PW 208 Clinical Preceptorship
- PW 220 Advanced Fundamental Knowledge of PSW Practice
- PW 233 PSW Care Across the Lifespan

Employment Opportunities:

Graduates may find employment in:

- Community home-care settings
- Private agencies
- Retirement homes
- Nursing homes
- Hospices
- Long-term care facilities
- Hospitals
- Health clinics

Are You Looking for a New Pathway?

Oshki-Wenjack provides college, university and trades programs to Nishnawbe Aski Nation and other learners in a safe, inclusive, supportive and culturally enriched learning environment. Most programs blend some in-person learning in Thunder Bay with more online learning in your home community. Personalized supports help improve student learning – and student success.

The Oshki-Wenjack campus is located in Thunder Bay, Ontario. The campus includes a cultural room, kitchen amenities, a computer lab and a variety of additional student supports. It is centrally located in the downtown south core Fort William Business District and is close to bus transportation.

For information, please contact our Recruitment Office:

Toll Free: 1-866-636-7454 | Phone: 1-807-626-1880 | recruitment@oshki.ca

oshki-wenjack.ca/programs/personal-support-worker/

