



THE UNIVERSITY OF AUCKLAND ENGLISH LANGUAGE ACADEMY WELCOMES YOU

Each year students from all around the world come together to develop their English skills at the University of Auckland's English Language Academy (ELA).

As New Zealand's foremost university operated language centre, the ELA has a proven track record for enhancing students' success at the University of Auckland. By choosing to study here, you will be starting an exciting new academic life which will allow you to be a part of one of the world's top 100 universities.

The ELA's programmes are carefully designed to develop your language, communication skills, and academic literacy to prepare you for success at the University of Auckland and your future career. The teaching team of experienced and qualified professionals prides itself on their ability to develop your individual language learning needs and your understanding of learning in a New Zealand tertiary setting.

The ELA's pastoral care services will provide you with all the support you need to thrive during your time with here.

While studying at the ELA, you will have wonderful opportunities to engage in a range of learning interactions and activities, experience new cultures and develop lifelong friendships, and I encourage you to embrace these wholeheartedly.

We look forward to welcoming you.

Dawn Freshwater

Vice-Chancellor

The University of Auckland





CONTENTS

New Zealand	2
Auckland	3
The University of Auckland	4
Why study at the ELA?	5
Timetable	6
English course levels	7

Courses

Undergraduate Pathway Programmes	8
Postgraduate Pathway Programmes	10
Academic English	12
General English	13
Cambridge CELTA	14
English for Teaching - TESOL (TKT)	14
Group courses	15

Tests

IELTS testing & preparation courses	16
Pearson testing	17

Student support

Support for students	18
Accommodation	19
Student social activities	19
Working in New Zealand	20
Essential information	20
Need help?	21

NEW ZEALAND

New Zealand is a modern, English-speaking country with a rich culture, known internationally for its beautiful natural landscapes and the culture of its native Māori people.

Located in the South Pacific Ocean about 2,200km east of Australia, New Zealand has two main islands – the North Island and the South Island. Similar in size and shape to the United Kingdom or Japan, New Zealand has a relatively small population of around 5 million people, making it one of the least crowded countries in the world.

New Zealand has been strongly influenced by Māori culture, its historic links as a British colony and by more recent migration mainly from Asia and Pacific Island nations. New Zealand people have a reputation for being warm, welcoming and friendly to visitors.

#1 WORLDWIDE for ease of doing business¹



¹Economist Intelligence Unit – Worldwide Educating for the Future Index

POPULATION:
Approximately

5 million

**NEW ZEALAND IS ONE OF THE MOST
PEACEFUL COUNTRIES IN THE WORLD**

4th out of 163 countries worldwide²

²Global Peace Index 2023

OFFICIAL LANGUAGES:

**Hi! English
& Māori** **Kia Ora!**

CURRENCY:

New Zealand dollar

Exchange rates: \$US 0.60 (August 2023)

Quick facts

LARGEST CITY:

Auckland (population 1.67 million)

DIVERSE PEOPLE:

Auckland is New Zealand's most multicultural region, with people of European, Asian, Pacific, and Māori descent.

CAPITAL:

Wellington

CLIMATE:

New Zealand has four seasons but extremes of temperature are unusual. Temperatures in Auckland range from an average of 20°C in summer (December to March) to 11°C in winter (June to August).



AUCKLAND

The ELA is located in a modern building on the University of Auckland's City Campus, in the centre of Auckland city.

Auckland's location next to two harbours means you can enjoy living in a large, cosmopolitan city, but still be close to beautiful beaches, nature walks and peaceful islands. You can go kayaking on the harbour in the morning and hike through green forests in the afternoon. Auckland boasts a variety of great cafés, restaurants and bars, excellent theatres, galleries and museums, great shopping and colourful Pacific and Asian cultural influences.



Top 10 MOST LIVEABLE CITY IN THE WORLD³

³Economist Intelligence Unit (EIU) 2023

NEW ZEALAND'S Largest City and ECONOMIC CENTRE

POPULATION:
Approximately

1.67 million



THE UNIVERSITY OF AUCKLAND

RANKED #1
The University of Auckland is the highest ranked university in New Zealand¹

¹Times Higher Education and QS rankings for 2024.

HIGHEST RANKED
New Zealand University for
Graduate Employability²

²QS Graduate Employability Rankings 2024

NEW ZEALAND'S
Most Innovative University³

³Reuters top 75 universities

Ranked among the world's top 100 universities⁴, the University of Auckland offers you the opportunity to gain an internationally recognised qualification at New Zealand's leading university.

Range of programmes

The University offers 160 programmes from Bachelor's level to PhD, including both research and course-work based Master's programmes, and short-term Study Abroad programmes.

Careers, English and Student Support

The University provides a comprehensive range of support services, including a dedicated team of international student

support advisors and an award-winning career development and employment service to help you prepare for your future career. You can also continue to work on your English skills through the University's English Language Enrichment service, with free access to online and on-campus English language resources, advice, and language learning groups.

Employment prospects

With a reputation for being open minded, real-world thinkers, University of Auckland graduates are highly regarded by employers around the world.⁵

⁴QS World University Rankings 2024

⁵QS Graduate Employability Rankings

Quick facts

- Established: 1883
- Ranking: 68th in the world⁴
- Students: approximately 40,000
- International Students: approximately 7,000

Faculties:

- Arts (Humanities and Social Sciences)
- Business
- Creative Arts and Industries
- Education and Social Work
- Engineering
- Law
- Medical and Health Sciences
- Science



WHY STUDY AT THE ELA?

Global reputation

Choose to study at the English language school of the University of Auckland, a world top 100 university and the leading university in New Zealand.¹

The University of Auckland's English Language Academy (ELA) was established over 20 years ago by world-renowned linguist Professor Emeritus Rod Ellis. Since then, ELA has guided tens of thousands of students on their journey to becoming globally competent communicators.

Teaching excellence

Learn from highly qualified and experienced teachers.

The ELA employs experienced teachers with degrees and TESOL qualifications, who are all dedicated to helping you reach your goals.

ELA teachers use a communicative language teaching approach, where interaction and communication are the main aims of study.

Lessons involve active learning through pair and group work, in which teachers facilitate communication and provide you with every opportunity to practice your language skills.

Facilities and support

- Dedicated student services team offering pastoral care and accommodation support
- Study Centre
- Computing facilities equipped with learning technology
- Help with arriving in Auckland and finding accommodation
- Exciting social, sporting, and cultural activities

International connections

Meet, make friends and learn English with people from around the world.

Each year the ELA welcomes students from over 35 countries into our English language courses.

Direct pathways into New Zealand's top tertiary institutions

Meet the English language requirements for entry to programmes at the University of Auckland and some other New Zealand tertiary institutions.

¹QS World University Rankings 2024



TIMETABLE

You will be placed in either the Morning Session or Afternoon Session depending on your level of English. All students receive 20 hours of tuition per week. Students at higher levels of General English and Academic English have two hours of elective classes per day, while students at lower levels focus on building their key language foundations in the second class. Students choose their elective classes upon arrival at the ELA. Maximum class size for Academic English and University Pathway Programmes is 18, and the only exception is the additional input sessions in Summer School which are delivered in lecture format to groups of fewer than 40. For CELTA, maximum class size is 12, and for other programmes, it is 20.

MORNING SESSION (8.15am–12.30pm)				
Monday	Tuesday	Wednesday	Thursday	Friday
CLASS 8.15-10.15am	CLASS 8.15-10.15am	CLASS 8.15-10.15am	CLASS 8.15-10.15am	CLASS 8.15-10.15am
Break				
ELECTIVE 10.30am-12.30pm	ELECTIVE 10.30am-12.30pm	ELECTIVE 10.30am-12.30pm	ELECTIVE 10.30am-12.30pm	ELECTIVE 10.30am-12.30pm
AFTERNOON SESSION (1–5.15pm)				
Monday	Tuesday	Wednesday	Thursday	Friday
CLASS 1-3pm	CLASS 1-3pm	CLASS 1-3pm	CLASS 1-3pm	CLASS 1-3pm
Break				
ELECTIVE 3.15-5.15pm	ELECTIVE 3.15-5.15pm	ELECTIVE 3.15-5.15pm	ELECTIVE 3.15-5.15pm	ELECTIVE 3.15-5.15pm



ENGLISH COURSE LEVELS

If you are applying to study at university in New Zealand, you will need to provide evidence of your English language proficiency. You can demonstrate this by achieving the required score in an approved English language test, such as IELTS or PTE Academic, or successfully completing an ELA pathway course.

The table below shows the equivalent IELTS scores for ELA courses. For admission to a university programme, please note that some undergraduate and postgraduate degrees have higher requirements.

ENGLISH LANGUAGE PATHWAYS TO UNIVERSITY							
Entry IELTS equivalent	Exit IELTS equivalent	UNDERGRADUATE UNIVERSITY PATHWAYS		POSTGRADUATE UNIVERSITY PATHWAYS			COURSE LEVEL
6.0	6.5			30 weeks FCertEAP (Extended)	20 weeks FCertEAP (Standard)	10 weeks FCertEAP (Accelerated)	Academic English EAP3 (10weeks)
5.5	6.0	10 weeks FCertEAP (Accelearted)	Academic English EAP2 (10weeks)				
5.0	5.5	20 weeks FCertEAP (Standard)	Academic English EAP1 (10weeks)				
4.5	5.0	Academic English EAP Intro (10weeks)					

Minimum entry requirements

On your first day at the ELA, we will assess your skills and place you at the right level.

The chart below shows each course's approximate entry point based on your English ability.

IELTS	PTE Academic	TOEFL iBT	CEFR	General English	Academic English	TESOL (TKT)
6.0	50	80	B2+	Advanced	EAP 3	
5.5	42	70	B2	Upper Intermediate	EAP 2	TESOL (TKT)
5.0	36	60	B1+	Intermediate	EAP 1	
4.5	29	50	B1	Intermediate	Intro to EAP	
4.0		30	A2	Pre-Intermediate		
3.5		20	A1+	Elementary		

UNDERGRADUATE PATHWAY PROGRAMMES

ELA's undergraduate pathway programmes are designed to prepare you for your university studies through English.

These are direct entry programmes. This means that when you successfully complete them with the required grade, you will meet the English language requirements for entry to the University of Auckland and a range of other tertiary institutions in New Zealand.¹

There are three programmes available to choose from. The most suitable programme for you will depend on your current level of English.

- **FCertEAP Plus for Undergraduate Studies** (Foundation Certificate in English for Academic Purposes Plus): 30 weeks/600 hours
- **FCertEAP for Undergraduate Studies** (Foundation Certificate in English for Academic Purposes): 20 weeks/400 hours
- **EPUS** (English Pathway for Undergraduate Studies): 10 weeks/200 hours.



"The academic writing skills I learnt at the ELA will be very important for my studies at the University of Auckland. Carrying out research projects, writing essays and giving presentations have all been very useful university preparation experiences. Not only have my English language skills improved, but I have also developed my critical thinking skills and ability to study independently."

Alice Zhang,
China

FCertEAP PLUS

FCertEAP Plus for Undergraduate Studies (30 weeks) is for students:

- who hold a conditional offer for undergraduate study at the University of Auckland or other New Zealand tertiary institutions,¹ and
- who do not meet the English language requirements for their university study

Students who successfully complete this programme with the required grade, will meet the English language requirements for university study.

This extended programme (Academic English + FCertEAP) will help students develop the most important skills needed to succeed in their undergraduate studies through English.

Course length

30 weeks (27-week² courses commence in June, September, and November)

Total hours

600 hours

ENTRY REQUIREMENTS

	IELTS	PTE-A	TOEFL iBT	ELA Test
Overall	4.5	29	34	Minimum CEFR B1
Writing	4.5	29	11	
Other bands	4.0	23	6	

Students who do not meet the above requirements can still apply and will receive an offer of place for three blocks (30 weeks) of Academic English. They can be accepted into FCertEAP Plus if they gain an acceptable score in a formal ELA placement test. Students who do not reach the required level in the ELA placement test can join FCertEAP Plus after successfully completing General English to an appropriate level.

¹ More information on the New Zealand tertiary institutions that recognise the FCertEAP Plus is available on request.

² Due to the Christmas break, the FCertEAP Plus course commencing in June, September, and November is typically 27 weeks long, but the course hours remain 600 hours in total.

FCertEAP

FCertEAP for Undergraduate Studies (20 weeks) is for students:

- who hold a conditional offer for undergraduate study at the University of Auckland or other New Zealand tertiary institutions¹, and
- who do not meet the English language requirements for their university study

Students who successfully complete this programme with the required grade, will meet the English language requirements for university study.

Students in this pathway programme will build on their current level of academic English and be well prepared for their undergraduate studies.

Course length

20 weeks (17-week² courses commence in September and November)

Total hours

400 hours

ENTRY REQUIREMENTS				
	IELTS	PTE-A	TOEFL iBT	ELA Test
Overall	5.0	36	60	Minimum CEFR B1+
Writing	5.0	36	18	
Other bands	4.5	29	12	

Students who do not meet the above requirements (writing 5.0/PTE 36/TOEFL 18, other bands 4.5/PTE 29/TOEFL 12) but have an overall IELTS score of 5.0 (PTE 36 or TOEFL 60) can apply for taking a formal ELA placement test if they hold a conditional offer for an undergraduate programme from the University of Auckland. They can be accepted into FCertEAP if they gain an acceptable score in the ELA placement test.

Students who do not reach the required level in the ELA placement test for FCertEAP but meet the entry requirement for FCertEAP Plus can apply for FCertEAP Plus for Undergraduate Studies.

EPUS

EPUS (10 weeks) is for students:

- who hold a conditional offer for undergraduate study at the University of Auckland or other New Zealand tertiary institutions³, and,
- who have narrowly missed the English language requirements

Students who successfully complete this programme with the required grade, will meet the English language requirements for university study.

This short intensive programme focuses on developing the language proficiency and academic literacy needed for undergraduate studies through English.

Course length

10 weeks (an accelerated 7-week⁴ EPUS is available in November)

Total hours

200 hours

UNIVERSITY ENTRY REQUIREMENTS			
Academic IELTS Score Required For Undergraduate Programmes	7.0 with no band less than 6.5	6.5 with no band less than 6.0	6.0 with no band less than 5.5
EPUS IELTS Score Requirements			
Overall	6.5	6.0	5.5
Writing	6.5	6.0	5.5
Other bands	6.0	5.5	5.0
PTE Academic Score Requirements			
Overall	58	50	42
Writing	58	50	42
Other bands	50	42	36
TOEFL iBT Score Requirements			
Overall	90	80	70
Writing	24	21	21
Other bands	18	16	14

¹ More information on the New Zealand tertiary institutions that recognise the FCertEAP is available on request.

² Due to the Christmas break, the FCertEAP course commencing in September, and November is typically 17 weeks long, but the course hours remain 400 hours in total.

³ More information on the New Zealand tertiary institutions that recognise the EPUS is available on request.

⁴ Due to the Christmas break, the EPUS course commencing in November is typically 7 weeks long, but the course hours remain 200 hours in total.

POSTGRADUATE PATHWAY PROGRAMMES

ELA's postgraduate pathway programmes have been designed to prepare you for the next step in your university journey.

These programmes will help you develop the language proficiency and academic literacy needed for postgraduate studies through English.

These are direct entry programmes: successful completion with the required grade will meet the English language requirements for entry to the University of Auckland and a range of other tertiary institutions in New Zealand.¹

There are three programmes available to choose from.

The most suitable programme for you will depend on your current level of English.

- **FCertEAP Plus for Postgraduate Studies (Foundation Certificate in English for Academic Purposes Plus):** 30 weeks/600 hours
- **FCertEAP for Postgraduate Studies (Foundation Certificate in English for Academic Purposes):** 20 weeks/400 hours
- **EPPS (English Pathway for Postgraduate Studies):** 10 weeks/200 hours.



"The most beneficial part of the ELA pathway course was learning not only the use of academic English but also skills that are relevant to university courses, e.g., how to find and understand academic sources, and how to write a proper academic essay. I was able to interact with my teachers and classmates in full English every day, which made me increasingly confident to speak English. At the ELA, we can feel a strong sense of kindness and support."

**Phoebe,
China**

FCertEAP PLUS

FCertEAP Plus for Postgraduate Studies (30 weeks) is for students:

- who hold a conditional offer for postgraduate study at the University of Auckland or other New Zealand tertiary institutions¹, and,
- who do not meet the English language requirements for their university study

Students who successfully complete this programme with the required grade will meet the English language requirements for postgraduate university study.

This extended programme (Academic English + FCertEAP) will help students develop the most important skills needed to succeed in their postgraduate studies through English.

Course length

30 weeks (27-week² courses commence in June, September, and November)

Total hours

600 hours

ENTRY REQUIREMENTS

	IELTS	PTE-A	TOEFL iBT	ELA Test
Overall	5.0	36	60	Minimum CEFR B1+
Writing	5.0	36	18	
Other bands	4.5	29	12	

Students who do not meet the above requirements can still apply and will receive an offer of place for three blocks (30 weeks) of Academic English. They can be accepted into FCertEAP Plus if they gain an acceptable score in a formal ELA placement test. Students who do not reach the required level in the ELA placement test can join FCertEAP Plus after successfully completing EAP Intro.

¹ More information on the New Zealand tertiary institutions that recognise the FCertEAP Plus is available on request.

² Due to the Christmas break, the FCertEAP Plus course commencing in June, September, and November is typically 27 weeks long, but the course hours remain 600 hours in total.

FCertEAP

FCertEAP for Postgraduate Studies (20 weeks) is for students:

- who hold a conditional offer for postgraduate study at the University of Auckland or other New Zealand tertiary institutions¹, and,
- who do not meet the English language requirements for their university study

Students who successfully complete this programme with the required grade will meet the English language requirements for university study.

Students in this pathway programme will build on their current level of academic English and be well prepared for their postgraduate studies through English.

Course length

20 weeks (17-week² courses commence in September and November)

Total hours

400 hours

ENTRY REQUIREMENTS				
	IELTS	PTE-A	TOEFL iBT	ELA Test
Overall	5.5	42	70	Minimum CEFR B2-
Writing	5.5	42	21	
Other bands	5.0	36	14	

Students who do not meet the above requirements (writing 5.5/PTE 42/TOEFL 21, other bands 5.0/PTE 36/TOEFL 14) but have an overall IELTS score of 5.5 (PTE 42 or TOEFL 70) can apply for taking a formal ELA placement test if they hold a conditional offer for a postgraduate programme from the University of Auckland. They can be accepted into FCertEAP if they gain an acceptable score in the ELA placement test.

Students who do not reach the required level in the ELA placement test but meet the entry requirement for FCertEAP Plus can apply for FCertEAP Plus for Postgraduate Studies.

EPPS

EPPS (10 weeks) is for students:

- who hold a conditional offer for postgraduate study at the University of Auckland or other New Zealand tertiary institutions³, and,
- who have narrowly missed the English language requirements
- Students who successfully complete this programme with the required grade, will meet the English language requirements for university study.

This short intensive programme focuses on developing the language proficiency and academic literacy needed for postgraduate studies through English.

Course length

10 weeks (an accelerated 7-week⁴ EPPS is available in November, and the EPPS for Business Masters runs in June)

Total hours

200 hours

UNIVERSITY ENTRY REQUIREMENTS		
Academic IELTS Score Required For Postgraduate Programmes	7.0 with no band less than 6.5	6.5 with no band less than 6.0
EPPS IELTS Score Requirements		
Overall	6.5	6.0
Writing	6.5	6.0
Other bands	6.0	5.5
PTE Academic Score Requirements		
Overall	58	50
Writing	58	50
Other bands	50	42
TOEFL iBT Score Requirements		
Overall	90	80
Writing	24	21
Other bands	18	16

¹ More information on the New Zealand tertiary institutions that recognise the FCertEAP is available on request.

² Due to the Christmas break, the FCertEAP course commencing in September, and November is typically 17 weeks long, but the course hours remain 400 hours in total.

³ More information on the New Zealand tertiary institutions that recognise the EPPS is available on request.

⁴ Due to the Christmas break, the EPPS course commencing in November is typically 7 weeks long, but the course hours remain 200 hours in total.

ACADEMIC ENGLISH

Academic English will help you improve your English language skills to prepare you for study success at university. This course provides you with opportunities to develop your independent learning strategies and individual needs in listening, speaking, reading and writing.

If you wish to improve your IELTS band score, you may choose to tailor your Academic English course with a preparation elective class. Students can take an IELTS test upon completion of the course at the ELA's test centre.

If you wish to improve your English for future tertiary studies, you may choose to tailor your Academic English course with a university preparation skills elective class.

Course length

Students can take more than one block of 10 weeks depending on their needs. Each block is 10 weeks; except Summer School, which is 7 weeks. 200 hours.

Entry requirements

You will be tested on your first day to determine your class level. There are four levels of English for Academic Purposes (EAP) offered:

ACADEMIC ENGLISH LEVELS				
Course	IELTS	PTE ACADEMIC	TOEFL iBT	CEFR
EAP 3	6.0	50	80	B2+
EAP 2	5.5	42	70	B2
EAP 1	5.0	36	60	B1+
Intro to EAP	4.5	29	50	B1

A recent IELTS, PTE Academic, or TOEFL score may be given as evidence of level, but if there is a significant difference between this and the placement test score, the Academic English manager will determine the appropriate level for the student.

If you are below the level required for Introduction to English for Academic Purposes, your enrolment will be changed to the General English course to build your language foundations.



"At the ELA, I have felt a real progression in my level of English. My fluency has improved and I receive constant feedback on my pronunciation from the teachers."

A really nice part of this experience is that I have made a lot of international friends – after I finish at the ELA I have my friends from Brazil!"

**Pierre Montel,
France**



GENERAL ENGLISH

General English will help you improve your ability to communicate in English in social and work situations and progress to other ELA courses.

The course focuses on the development of communication skills with a balance of speaking, listening, reading and writing tasks. You will learn through class activities, individual, pair and small group work.

From Intermediate level, you can choose an elective to focus on a particular subject or skills in order to tailor your course to meet your learning goals. The elective classes are dependent on level and student demand. They may include: Communication Skills, Business English and IELTS preparation.

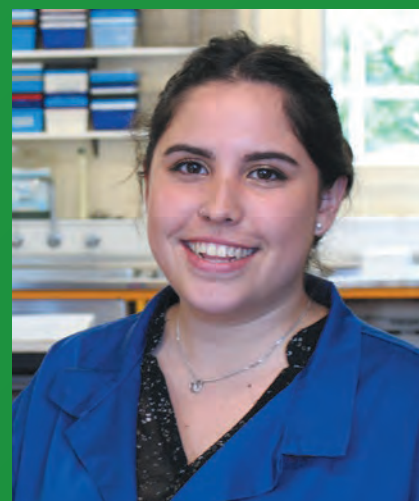
Course length

Flexible; minimum enrolment of 3 weeks. 20 hours per week.

Entry requirements

Students are tested on their first day to determine their class level. Please note that we only have General English classes at the levels in the table below.

GENERAL ENGLISH LEVELS	
Course	CEFR LEVEL
Advanced	B2+
Upper Intermediate	B2
Intermediate	B1
Pre-Intermediate	A2
Elementary	A1+



"I'm really grateful to the ELA as the teachers gave me the grammar and communicative English needed for my profession. I improved my confidence at the ELA and it was so important I studied there, as my teachers always encouraged me. I feel that if this wasn't part of my journey, I wouldn't be working here at the University in the kind of career I studied for in my home country."

**Victoria Bravo,
Chile**



CAMBRIDGE CELTA

The Cambridge Certificate in Teaching English to Speakers of Other Languages (CELTA) is the most widely recognised qualification for those entering the field of teaching English as a foreign language. It is recognised by language schools around the world.

This qualification provides the skills needed to begin a career teaching English as a foreign language and makes finding work in a language school easier.

Course length

Online Course: 5 weeks (full time)

Face-to-Face Course: 4 weeks (full time); 10 weeks (part time)

Entry requirements

A native or near-native level of English is required for entry onto this course. Applicants need to successfully complete a language awareness task and interview.



“We did a lot of in-classroom teaching. That really helped consolidate what I learnt during the input sessions at the ELA. Although all teaching practices were in-person, we also got to do some online. That really helped me become more flexible.

The highlight of the course was getting into the classroom and teaching students. The course was really fast-paced, and it pushed you to improve your teaching and try to apply what you learnt during the input sessions.”

**Dylan,
New Zealand**



“This course was perfect for me as it was an introduction to the teaching world. They provide you with teaching techniques so you can develop your own skills. By doing a lot of classroom activities, I learnt how to create my own lesson plans and developed my classroom management skills, which was very important. The teaching practice is really rewarding when you can give a good class, and you feel that your students are able to improve their English. If you really want to become a teacher one day this is the first step.”

**Ignacio Nunez
Norambuena, Chile**

ENGLISH FOR TEACHING – TESOL (TKT)

English for Teaching - TESOL (TKT) is designed to enhance your English language ability and provide the teaching skills required to become a communicative teacher of English. It is ideal if you want to prove your teaching knowledge with a globally recognised certificate.

With TKT, you show employers that you:

- are familiar with different teaching methodologies
- know how to use teaching resources effectively
- understand key aspects of lesson planning
- can use different classroom management methods for different needs

Entry requirements

No prior teaching experience is required. To be eligible for English for Teaching – TESOL (TKT), applicants need to meet the following English language entry requirements:

- **ELA:** Minimum Upper Intermediate level (CEFR level B2) as determined by an ELA test or
- **IELTS:** An Academic IELTS test result with the following band score: 5.5 overall, with no less than 5.5 in writing

GROUP COURSES

Each year the ELA welcomes groups of students from around the world, usually coming from a university, organisation or government body. Group courses can be catered to the institution's needs and can include integrating students into a General English course or a closed group course or a combination of both.

General English Group Courses

Students are integrated into different classes according to their English level. They are given the opportunity to meet and study with other students from a range of backgrounds.

Closed Group Courses

Closed group courses only contain members of the participating university or organisation. They have an intensive focus on English for Specific Purposes. Examples of closed group courses include:

- General English
- ELA & Study Abroad at the University of Auckland
- English plus New Zealand Culture
- Business English
- Teacher Development
- English for Academic Staff

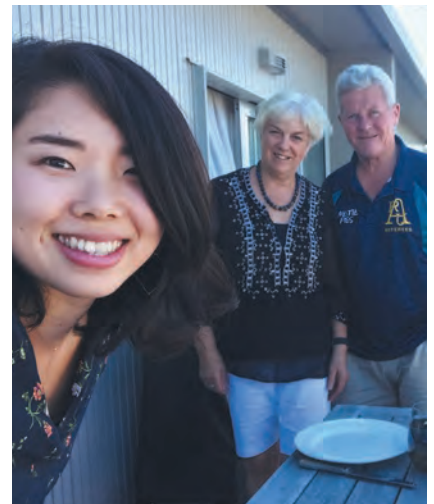
Proposals for group courses can be provided on request.

Activities

Optional afternoon or weekend excursions are available and can be booked in advance and included in the quotation.

Options include:

- Hobbiton (Lord of the Rings) movie set tour
- Kayaking on Waiheke Island
- Beach horse-riding and cultural activities
- Weekend trip to Rotorua and Waitomo
- Whale & dolphin watching



"The time I spent studying at the ELA in Auckland was life-changing. It was my first experience studying away from home and after ten months, I not only felt more confident, but also more curious about the world. Being able to live with a homestay family was an invaluable experience. They treated me as a real member of the family and taught me about Kiwi culture. Communicating with them allowed me to practice my everyday spoken English outside of the classroom."

Auckland has a great multicultural urban atmosphere and is surrounded by beautiful beaches and bush. It's well located for weekend and day trips, and during my time here I went jet boating, kayaking, bungee jumping in Taupo, and caught ferries to nearby islands such as Rangitoto and Waiheke."

Kurumi Uraji,
Japan





IELTS TESTING

The International English Language Testing System (IELTS) is one of the most widely recognised English tests in the world.

IELTS testing

The IELTS test is accepted by all universities in New Zealand and Australia as a measure of English proficiency to enter academic study programmes. Immigration authorities and professional organisations also accept IELTS as the benchmark language proficiency test.

IELTS testing in New Zealand

The IELTS Centre at the ELA is New Zealand's largest and most established test centre. This award winning IELTS administration centre offers candidates the flexibility of 35 test dates per year. Candidates have the comfort of taking the test in a well-equipped environment. The IELTS team strive to provide candidates with the best possible organisational support.

IELTS testing in the Pacific

The IELTS Centre at the ELA conducts tests in ten countries in the Pacific and partners with aid organisations as part of scholarship programmes leading to university entry.

PEARSON TESTING

PTE Academic testing

The Pearson Test of English Academic (PTE Academic) is an internationally leading computer based English test recognised for study abroad, pathways to universities and immigration.

Why take a PTE Academic test?

Fast

- Book your test in as little as 24 hours in advance
- Delivers online results in approximately five business days

Flexible

- Tests are held throughout the year, so choose a time that suits you

Approved

- Approved by New Zealand and Australian Governments for visa applications
- Accepted by University of Auckland and numerous organisations in New Zealand, Australia, UK, USA, Canada and Ireland

Secure

- Candidate test answers are highly secure with Pearson's palm vein scanning, randomised test forms and data forensics technology

Why take a PTE Academic test at the ELA?

- Largest official Pearson test centre in Auckland with 12 stations available
- Central location close to public transport lines and parking facilities
- Highly experienced test administrators
- Safe and secure testing technology to ensure candidate confidentiality and integrity of answers

Official Pearson VUE test centre

Pearson VUE is the international leader in delivering secure computer based testing for professional licencing and certification. In partnership with over 450 credential owners globally, Pearson VUE tests are offered to candidates in nearly every industry including finance, IT, education, engineering and healthcare. Candidates can take a Pearson VUE test at the ELA's official Pearson test centre. As the largest test centre in Auckland, candidates can book and sit their test in confidence with ELA's secure examination technology and highly experienced test facilitators.



SUPPORT FOR STUDENTS

There are many support services available to you during your time at the ELA.

Orientation

On your first day, our friendly team will provide an orientation programme to help you with your studies and your life in Auckland. They can assist you with public transport, banking, mobile phone connection and all you need to start your experience in New Zealand.

Pastoral care

Our Student Services team can help you with any issues you may face while studying at the ELA.

The ELA has agreed to observe and be bound by the New Zealand Government's Code of Practice for the Care of International Students. For more information on the

Code or student support services, please contact us at ela@auckland.ac.nz

Academic support

You can always make an appointment to meet a senior teacher to talk about your study and your progress. Our senior teachers are highly qualified English language professionals with postgraduate teaching qualifications and will be happy to support your study goals.

Online support

For online courses, an online orientation and an online IT workshop takes place before each course. During the course, students can access both academic and pastoral support services.



FACILITIES

Study Centre

Our Study Centre is open 5 days a week and provides a place to practice your English. The Study Centre is staffed on weekdays by the Study Centre Coordinator, who is experienced in helping students with their study goals.

Resources include: IELTS textbooks and practice tests, PTE Academic textbooks, graded readers, DVDs (with English subtitles), reference books, English language audio and video files and practice lectures.

Student Lounge

We have a large Student Lounge where you can relax, eat your lunch, play board games or just sit and chat!

The lounge is equipped with tea, coffee, snack machines and microwaves to heat your food.

Computers

Wireless internet is available at the ELA and computers are available for students to use.

Access to the University of Auckland

As a student of the ELA, you are able to access the University's Recreation Centre at a discounted price. You also have the option to join one of the University's many student clubs during your time at the ELA. Along with the pastoral care provided by the ELA, you can also access the Student Health and Counselling services at the University's City Campus.

ACCOMMODATION

Homestay

Homestay accommodation is a great way to learn about New Zealand culture and to practise your English in a friendly and relaxed environment. Many students choose to stay in a homestay for the duration of their course. Others choose to stay for the first few weeks and then find alternative accommodation when they are more familiar with living in Auckland.

In a homestay you live with a family, have your own room, and main meals are provided. Most homestays are within 30-60 minutes from the ELA by public transport

Apartment accommodation

If living in a homestay isn't for you, our Accommodation team can help you find an apartment close to the ELA. Information on these services is available on the ELA website: www.ela.auckland.ac.nz/accommodation

For more information about ELA organised accommodation, please visit our website.



Airport transfers

The ELA airport transfer service can help make your arrival as smooth and stress-free as possible. You will be met at the airport and taken to your accommodation. This can be booked with your enrolment.

Living costs

Generally you should allow approximately NZ\$450 - \$650 per week for living costs, including accommodation, food and transport.

EXPENSES PER WEEK ¹		
	HOMESTAY	ROOM IN RENTED ACCOMMODATION
Accommodation	\$378	\$275 - \$475
Food	\$75	\$125-\$200
Transport (2-3 zones) ²	\$39	\$150-\$250
Entertainment	\$50-\$150	\$50-\$150

¹ Costs are in NZD and are approximate for 2023/2024 ² Based on bus/train fare over two zones.

STUDENT SOCIAL ACTIVITIES

ELA students are encouraged to join the weekly social activities and special events, organised by our Activities Coordinator. These are a great chance to practice English and meet other students outside class hours. The activities are weather dependent and vary by time of year but can include BBQs, football games, zoo trips, indoor rock climbing, horse riding and even bungee jumping!

To see some examples of our exciting student activities, check out our Facebook page: www.facebook.com/uoaela

Weekend Trips

We also work closely with local tour companies who offer students a wide range of weekend activities and sightseeing options around New Zealand. Popular destinations include the Hobbiton (Lord of the Rings) Movie Set, the Bay of Islands and Rotorua.



WORKING IN NEW ZEALAND

While studying

When you are studying at the ELA, you may also be able to work part-time. This will depend on the conditions of your visa.

Our Student Services team are happy to advise you about finding part-time work in New Zealand.

You can also look on Student Job Search, which is an online job board that matches students with employers: www.sjs.co.nz

Workshops

Our Work Ready Workshops are designed to assist you in looking for and preparing for work, both in New Zealand and in a wider context. They are one-hour weekly sessions available to all ELA students, and are offered at

both higher and lower language levels. The aim of these sessions is to provide a 'hands-on', practical approach to work readiness, and includes themes such as:

- Writing Effective CVs and Cover Letters
- Job Interview Skills and Mock-Interview Practice
- Work Rights in New Zealand
- Finding a Job in New Zealand
- Coping in the Workplace: Communication, Team Work & Problem Solving
- Employability Skills

As well as equipping you with work-related skills and knowledge, these workshops give you the opportunity to further practice your English language skills through speaking, listening, reading and writing.



ESSENTIAL INFORMATION

Student visas

Depending on your nationality and length of study, you may need to apply for a student visa before entering New Zealand. Full details on the necessary reporting requirements are available through Immigration New Zealand, and can be viewed at:

www.immigration.govt.nz

Visa renewal assistance

The ELA Enrolments team can assist you with visa extensions and any queries.

Travel and health insurance

All international students are required to have insurance while studying in New Zealand. The ELA uses Allianz Global Assistance NZ Ltd as its preferred insurance provider. Enrolled students will be charged Allianz's Studentsafe University insurance premium when enrolment is completed.

The Allianz Studentsafe University insurance fee must be paid unless the ELA approves the use of an alternative insurance provider. You are required to have approved insurance for the duration of your study, regardless



of the type of visa you have. Your insurance cover is automatically renewed when you re-enrol in a course.

If you have an insurance policy that is compliant with the requirements of the New Zealand Government's Code of Practice for the Pastoral Care of International Students, you will need to submit evidence of compliant insurance cover to qualify for an insurance fee waiver. For a list of compliant policies and further information, please see the ELA website:

www.ela.auckland.ac.nz/insurance

NEED HELP?

Marketing

Email: ela.marketing@auckland.ac.nz

Enrolments

Email: enrolment@ela.auckland.ac.nz

Accommodation

Email: accommodation@ela.auckland.ac.nz

IELTS

Email: ielts@auckland.ac.nz

Phone: +64 9 923 6547

Representatives overseas

The ELA has a number of official representatives in overseas offices. These organisations can provide you with information on the ELA and may offer you assistance in submitting an application. For a list of our official representatives, please refer to:

www.ela.auckland.ac.nz/registered-agents

Follow us on Social Media!

 Facebook
[uoaela](https://www.facebook.com/uoaela)



 Instagram
[uoaela](https://www.instagram.com/uoaela)



 Line
[uoa_ela](https://www.line.me/tw/uoa_ela)



 LinkedIn
[uoaela](https://www.linkedin.com/company/uoaela)



 WeChat
[uoa_ela](https://www.wechat.com/qrcode?qr_code_id=uoa_ela)



 Weibo
[nzela](https://www.weibo.com/nzela)



Disclaimer

Although every reasonable effort is made to ensure accuracy, the information in this document is provided as a general guide only for students and is subject to alteration. All students enrolling at the ELA must consult our Terms and Conditions to ensure they are aware of and comply with all regulations, requirements and policies. This is supplied with your Offer of Place and can be found on the ELA website at: www.ela.auckland.ac.nz





ENGLISH LANGUAGE ACADEMY



English Language Academy

Level 5, 67 Symonds Street
Auckland 1010

Postal Address

Bag #163, Private Bag 92019
Auckland 1142, New Zealand

Email: ela@auckland.ac.nz

Phone: +64 9 919 7695

ela.auckland.ac.nz