



WASHINGTON  
HOME BUILDERS  
FOUNDATION

# Annual Report

## Opportunity You Can Build On

We work to empower and inspire the next generation of builders by advancing building-related education, unlocking academic opportunities and career possibilities while fostering a culture of innovation, enthusiasm, and excellence in the building industry.



2025

## About Us

The Washington Home Builders Foundation (WHBF) was founded in 2012 by the Building Industry Association of Washington (BIAW) as a way to address educational and workforce needs within the building industry through charitable activities. Since its inception, WHBF has awarded nearly \$1M in scholarships and grants.

Over the past three years, the Washington Home Builders Foundation has intentionally developed, launched, and worked to sustain the Construction Trades Training Academy as a hands-on workforce solution to Washington's growing construction labor shortage.

Built in close partnership with home builders, workforce agencies, and community organizations, the Academy delivers free, eight-week pre-apprenticeship cohorts that combine foundational construction and carpentry training with industry-recognized certifications and wraparound supports. This multi-year effort reflects a long-term commitment to equitable access to well-paying careers, direct connections to employment and apprenticeship pathways, and a durable talent pipeline that strengthens both the residential building industry and the communities it serves.



## Message from the Executive Vice President



Greg Lane

As we look ahead in 2026, we are proud of the steady progress the Washington Home Builders Foundation has made through years of intentional growth, partnership, and investment in workforce development and education. What began as a vision has become a durable platform for preparing the next generation of builders and industry professionals. With continued support from our members, partners, and community, we enter the coming year focused on strengthening and sustaining these efforts—expanding access to opportunity, deepening employer engagement, and ensuring our industry has the skilled workforce it needs to thrive for years to come.

## Purpose

We exist to educate, train, and grow the construction workforce to establish careers, build more homes, and foster hope for generations to come.

## Mission

We open doors to construction careers by providing hands-on training, industry-recognized credentials, and direct connections to employers.

## Vision

A thriving construction workforce where opportunity is expanded, skilled professionals are in high demand, and communities are built stronger through meaningful careers.

**IN 2026, THE U.S. NEEDS**

**499,000**

**new construction workers to meet labor demand.**

*Data sources include: U.S. Bureau of Labor Statistics, Associated General Contractors of America, National Association of Home Builders, and Associated Builders and Contractors*



## 2026 Washington Home Builders Foundation Board of Directors



**Corey Condron, President**

Condron Homes, LLC



**Bob Camp, Vice President**

Camp Corporation



**Matt Willard, BIAW 1st Vice President**

Town & Country Homes



**Troy Schmeil, Director**

Callidus Development, Inc.



**Aaron Logue, Director**

Moss & Madder Builders



**Curtis Banta, Director**

Yonkman Construction, Inc



## Scholarships

The Washington Home Builders Foundation Scholarship Program supports Washington students pursuing careers in the building trades by reducing financial barriers to education and training. Scholarships assist with tuition, books, and program-related expenses while also connecting students to mentorship, industry guidance, and career placement support. By investing directly in students, the program helps cultivate a skilled, motivated pipeline of future construction professionals across a wide range of trades.



## Grants

Through its Career and Technical Education (CTE) Grant Program, the Foundation strengthens building-related education programs across the state. Grants provide both financial resources and strategic support—such as SWOT analysis, goal setting, and marketing assistance—to help programs expand capacity, modernize equipment, and improve outcomes. This approach ensures CTE programs are better positioned to meet industry needs while increasing access to high-quality training opportunities in their communities.



## Construction Trades Training Academy

The Construction Trades Training Academy delivers free, hands-on pre-apprenticeship training for individuals seeking entry into the construction industry. Eight-week cohorts combine classroom instruction with practical skills development, safety training, and industry-recognized certifications. Supported by strong partnerships with builders, workforce organizations, and community nonprofits, the Academy connects graduates directly to employment and apprenticeship pathways—helping address workforce shortages while creating equitable access to family-wage careers.

## WHBF Staff

**Greg Lane**  
Executive Vice President

**Al Audette**  
Foundation Director

**Steve Hyer**  
Vice President of Operations

**Megan Fiess**  
Strategic Partner Manager

**Cole Estrada**  
Academy Operations and  
Student Success Coordinator

**Randy Miller**  
Training and Instruction Manager



### Meet Diane

Diane joined the Summer 2025 BuildStrong Academy cohort, looking for a change. Construction seemed intriguing. Diane joined us with some barriers. During her cohort, she was the lead in our project handcrafting a business card holder for a local representative. Diane is now registered with CITC earning a prevailing wage as a painter.

TOTAL AWARDED SINCE INCPETION

**\$898,000+**

2025 SCHOLARSHIPS & GRANTS

Scholarships Awarded

**\$30,000**

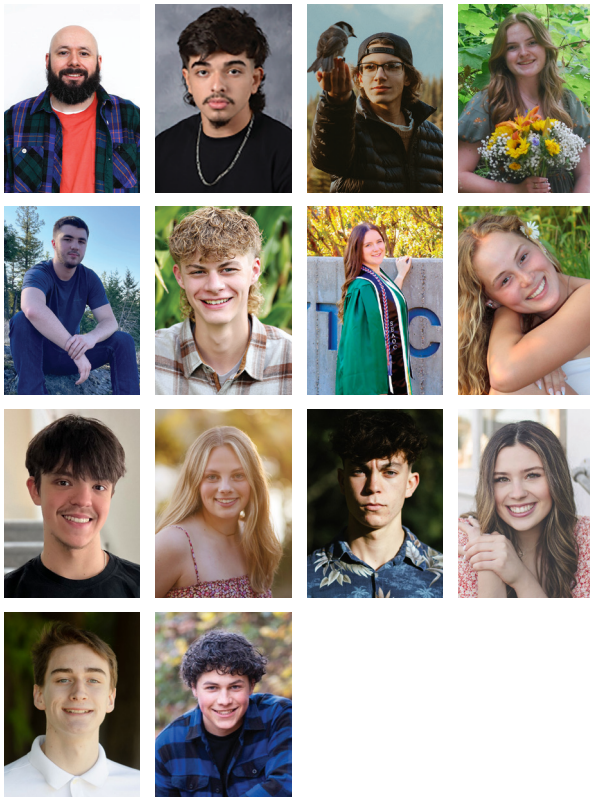
16 students entering construction trade education and training programs

CTE Program Grants Awarded

**\$38,462**

to 8 CTE programs and entities

### 2025 SCHOLARSHIPS RECIPIENTS



### BUILDSTRONG ACADEMY

**44**

Pre-Apprentices  
Trained

**79**

Credentials  
Awarded

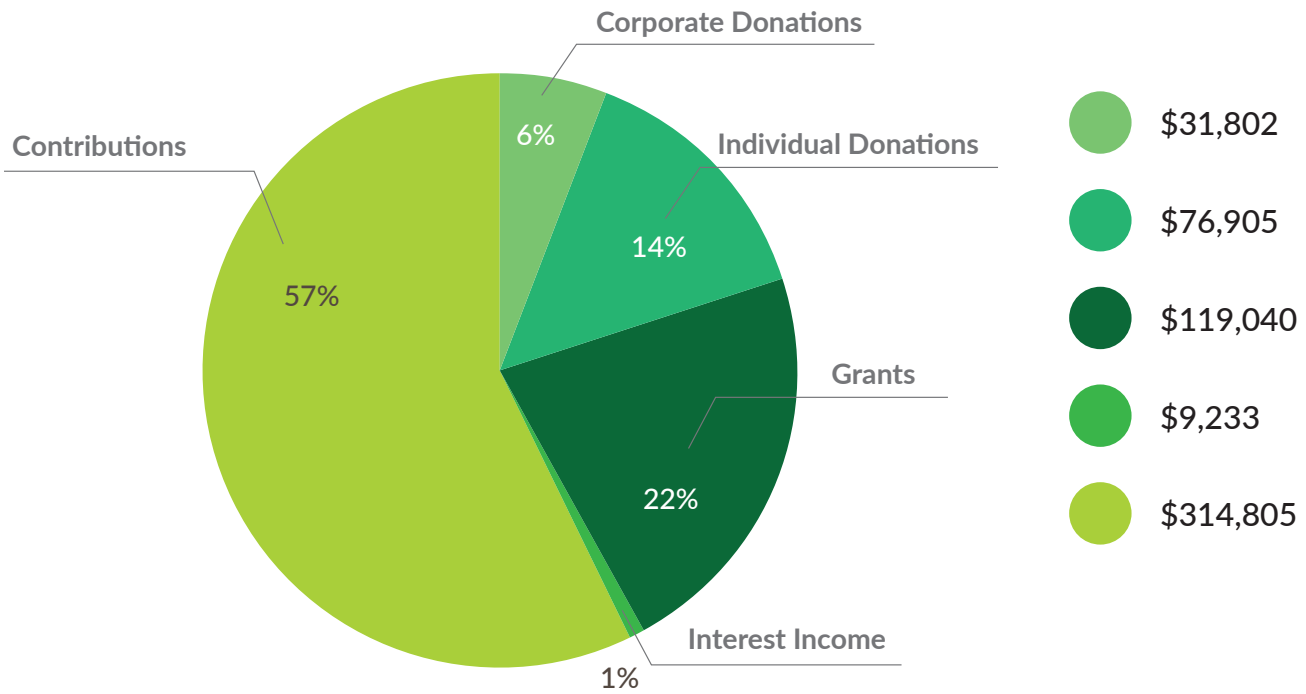
**136**

Certifications  
Awarded

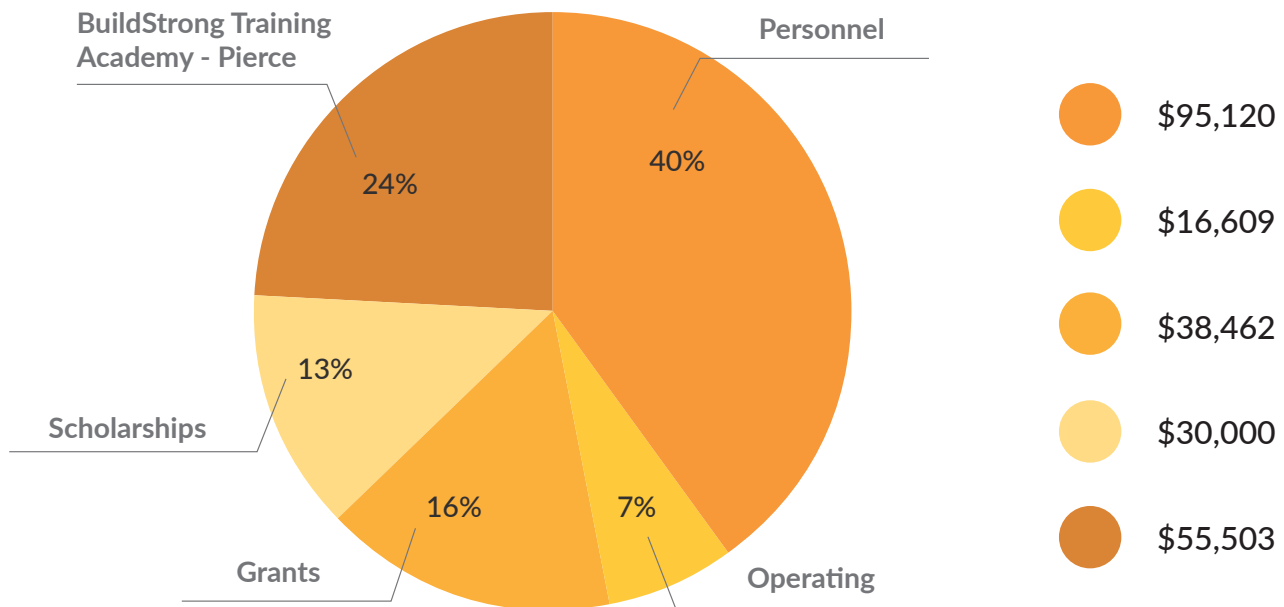
**\$24.37**

Avg. wage per hour  
upon job placement

**TOTAL REVENUE \$551,785**



**TOTAL EXPENSES: \$235,694**



**NET INCOME: \$316,091**



THANK YOU TO OUR DONORS

**Buildstrong Circle: \$100,000+**

Building Industry Association of Washington

**Blueprint Partners: \$50,000-\$99,999**

Anonymous Donor

**Workforce Benefactors: \$20,000 - \$49,999**

Camp Corporation

Truist Foundation

**Trade Champion: \$5,000-\$19,999**

Douglass Properties

MBA of King and Snohomish Counties

National Housing Endowment

Saphire Homes Inc

The Norcliffe Foundation

Timberland Bank

**Academy Friends: Up to \$4,999**

A.C.T Builders

Al Audette

Alexander H. Collins &

Daniel A. Himebaugh

David LaRiviere

Dick Rokes

Evergreen Building Products

Greg Lane

Meyers Floor Covering

Mighty Cause Foundation

National Housing Endowment

Nutter Family Foundation

Steve Hyer

Sue Elkin

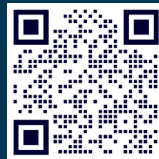
Trotter & Morton Facility Services Inc

Weyerhaeuser Giving Fund

Yonkman Construction

## Show Your Support

The Washington Home Builders Foundation is a 501(c)3 charitable organization as classified by the Internal Revenue Code. Your donations may be eligible for charitable contribution tax deductions. Check with your tax professional. EIN: 46-0667648



## Contact Us

Washington Home Builders Foundation  
300 Deschutes Way SW, Suite 300  
Tumwater, WA98501

(369) 352-7800  
meganf@biaw.com  
biaw.com/donate



**WASHINGTON  
HOME BUILDERS  
FOUNDATION**