



**MAILING ADDRESS**

11925 6300 ROAD  
MONTROSE, CO 81401

**OFFICES**

**MONTROSE HEADQUARTERS**

11925 6300 ROAD  
MONTROSE, CO 81401  
HOURS: MON/TUES/THURS/FRI 8AM - 5PM  
WED 8AM - 6PM

**DELTA OFFICE**

21191 H75 ROAD  
DELTA, CO 81416  
HOURS: MONDAY - FRIDAY 8AM - 5PM

**DMEA.COM | 877-687-3632**  
**ELEVATEINTERNET.COM | 844-386-8744**



**YOUR COOPERATIVE**

**SUPERPOWER**

**2025 ANNUAL REPORT**



**INSIDE THIS ISSUE!**

**CEO MESSAGE & LEADERSHIP TEAM** ..... 1 - 2

**DMEA BOARD & PRESIDENT'S MESSAGE** ..... 3 - 4

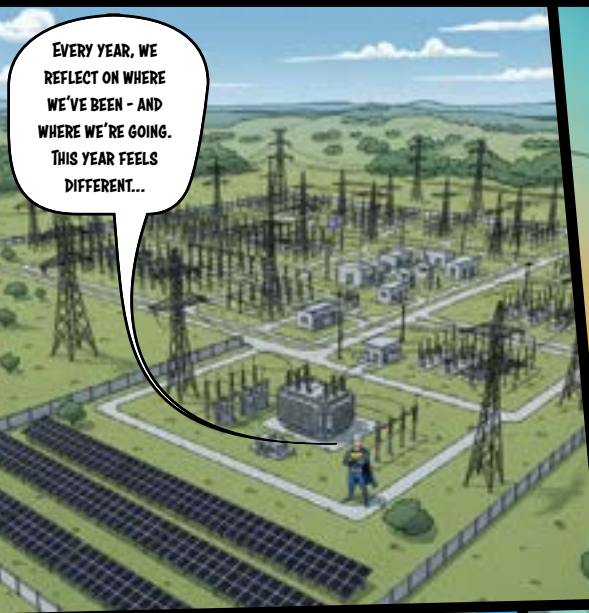
**OPERATIONS & ENGINEERING** .. 5 - 6

**TIMELINE & MAP** ..... 7 - 8

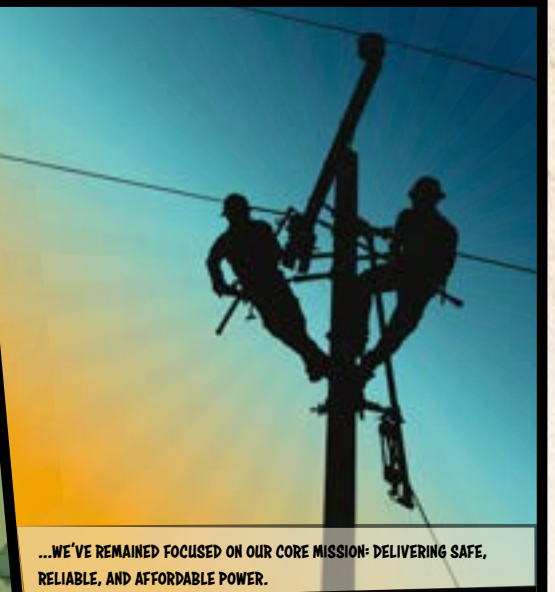
**FINANCE & ACCOUNTING** .. 9 - 10

**COMMUNITY RELATIONS** ... 11 - 12

**ELEVATE INTERNET** .... 13 - 14



EVERY YEAR, WE REFLECT ON WHERE WE'VE BEEN - AND WHERE WE'RE GOING. THIS YEAR FEELS DIFFERENT...

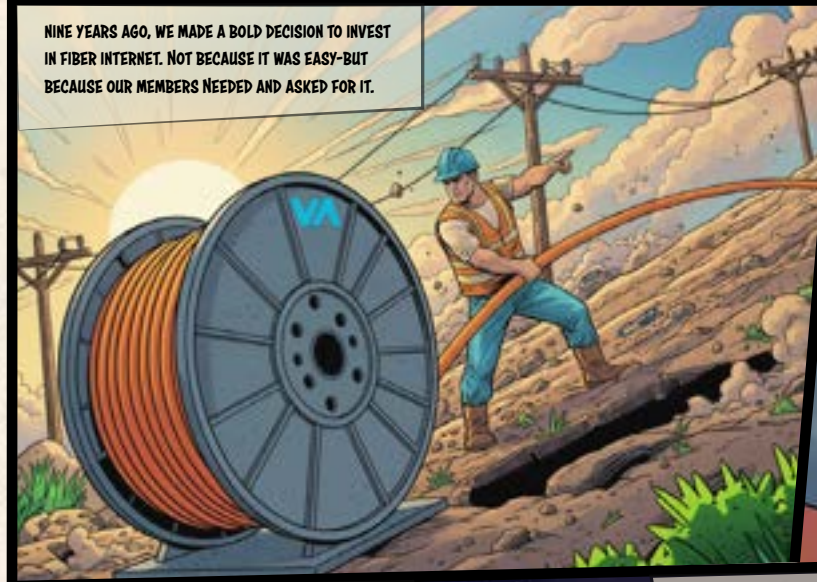


...WE'VE REMAINED FOCUSED ON OUR CORE MISSION: DELIVERING SAFE, RELIABLE, AND AFFORDABLE POWER.

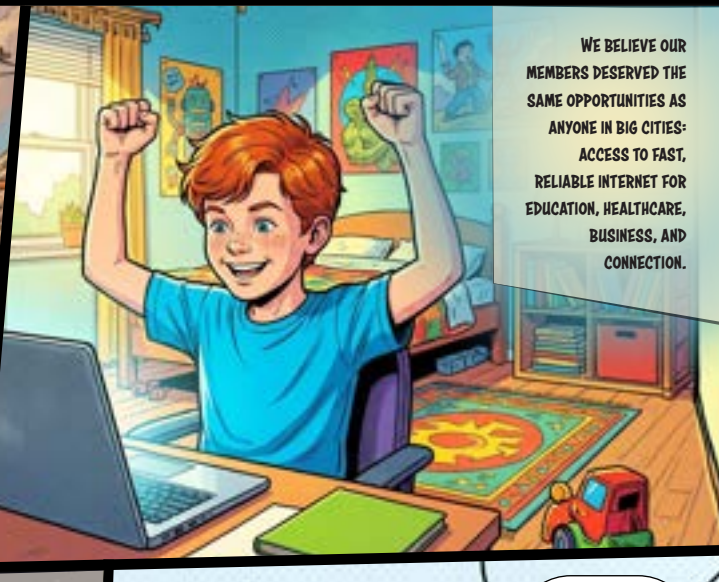
OUR EMPLOYEES CONTINUE TO GO ABOVE AND BEYOND—KEEPING THE LIGHTS ON, MAINTAINING OUR SYSTEM, AND SERVING OUR MEMBERS WITH DEDICATION. ONGOING EMPLOYEE TRAINING AND SAFETY PROGRAMS REINFORCE A STRONG CULTURE OF SAFETY.



LOOKING OUT FOR EACH OTHER MAKES POWERFULLY GOOD SENSE. THAT'S WHY WE CREATED A SHARP-EYED FEATHERED FRIEND, SAFETY CROW, THE ONLY BIRD WE KNOW WHO READS WARNING LABELS FOR FUN. HE PROUDLY REPRESENTS DMEA, WHERE SAFETY ISN'T JUST A SUGGESTION, IT'S OUR MOST IMPORTANT CORE VALUE.



NINE YEARS AGO, WE MADE A BOLD DECISION TO INVEST IN FIBER INTERNET. NOT BECAUSE IT WAS EASY—BUT BECAUSE OUR MEMBERS NEEDED AND ASKED FOR IT.



WE BELIEVE OUR MEMBERS DESERVED THE SAME OPPORTUNITIES AS ANYONE IN BIG CITIES: ACCESS TO FAST, RELIABLE INTERNET FOR EDUCATION, HEALTHCARE, BUSINESS, AND CONNECTION.



TODAY, ELEVATE IS NEARLY COMPLETED WITH ITS FIBER NETWORK BUILD OUT, PROVIDING FIBER-FAST SPEEDS ACROSS OUR SERVICE TERRITORY AND BEYOND. THAT'S NOT JUST INFRASTRUCTURE—IT'S OPPORTUNITY.

THIS REPORT IS A SNAPSHOT OF THAT WORK. BEHIND EVERY NUMBER IS A STORY—OF SERVICE, RESILIENCE, AND COMMUNITY.



AND MAYBE... A FEW MYSTERIES FINALLY REVEALED...



... THANK YOU FOR BEING PART OF THIS ADVENTURE. READ ON TO DISCOVER THE EPIC YEAR WE'VE HAD AND JOIN US FOR THE JOURNEY AHEAD!

*Jack*

**JACK JOHNSTON,**  
CHIEF EXECUTIVE OFFICER

ALONG WITH SAFETY CROW, OUR SENIOR STAFF ARE LEADING THE CHARGE...



**BOB FARMER**  
CHIEF FINANCIAL OFFICER



**MATEUSZ PENA**  
CHIEF TECHNICAL OFFICER



**SARAH ABBOTT**  
CHIEF RELATIONS OFFICER

...ENSURING WE'RE SAFE AND KEEPING OUR MEMBERS POWERED & CONNECTED.



**CODY CARVER**  
CHIEF OPERATIONS OFFICER



**JAY SUCKEY**  
CHIEF SERVICE OFFICER



**AMY GAVELL**  
CHIEF OF STAFF



**CHAD STICKLER**  
CHIEF SAFETY OFFICER

# THE YEAR BEHIND, THE YEAR AHEAD

A MESSAGE FROM THE BOARD PRESIDENT STACIA CANNON

## SOLAR PARTNERSHIP

One of the most exciting achievements this year was Garnet Mesa Solar coming online in Delta County. This large-scale, 380-acre project stands as one of Colorado's leading agrivoltaics installations, pairing renewable energy production with agricultural use. The site is expected to generate more than 200,000 MWh annually, with over a third supporting DMEA members through our power agreement. It also serves as winter grazing land for 1,300 sheep—demonstrating how energy innovation and local heritage can work hand in hand.

**DEAR MEMBERS,**  
As we reflect on the past year, we are reminded of the super-strength of our cooperative and the communities we serve. Together, we have navigated challenges, celebrated milestones, and continued to invest in the systems and services that power daily life across our region. Your support and engagement make this progress possible. As we look ahead to 2026, we remain focused on delivering safe, reliable, affordable energy and expanding opportunities that benefit our members for years to come...



**STACIA CANNON**  
NORTH REGION,  
BOARD PRESIDENT

This milestone reflects the superpower of collaboration, made possible through partnerships with Alluvial Power, Guzman Energy, and Delta County. This is a meaningful step forward in increasing locally sourced renewable energy.

## IN 2025

Last year, we strengthened safety and system reliability through proactive maintenance, technology upgrades, and wildfire mitigation. We expanded the use of advanced grid monitoring tools and enhanced seasonal operating practices to reduce wildfire ignition potential.



## IN THE FUTURE

In 2026, we'll expand these efforts to harden against outages during extreme weather, protect members' investments, and fortify the safety of members and employees.

With Appreciation & Anticipation,

*Stacia Cannon*

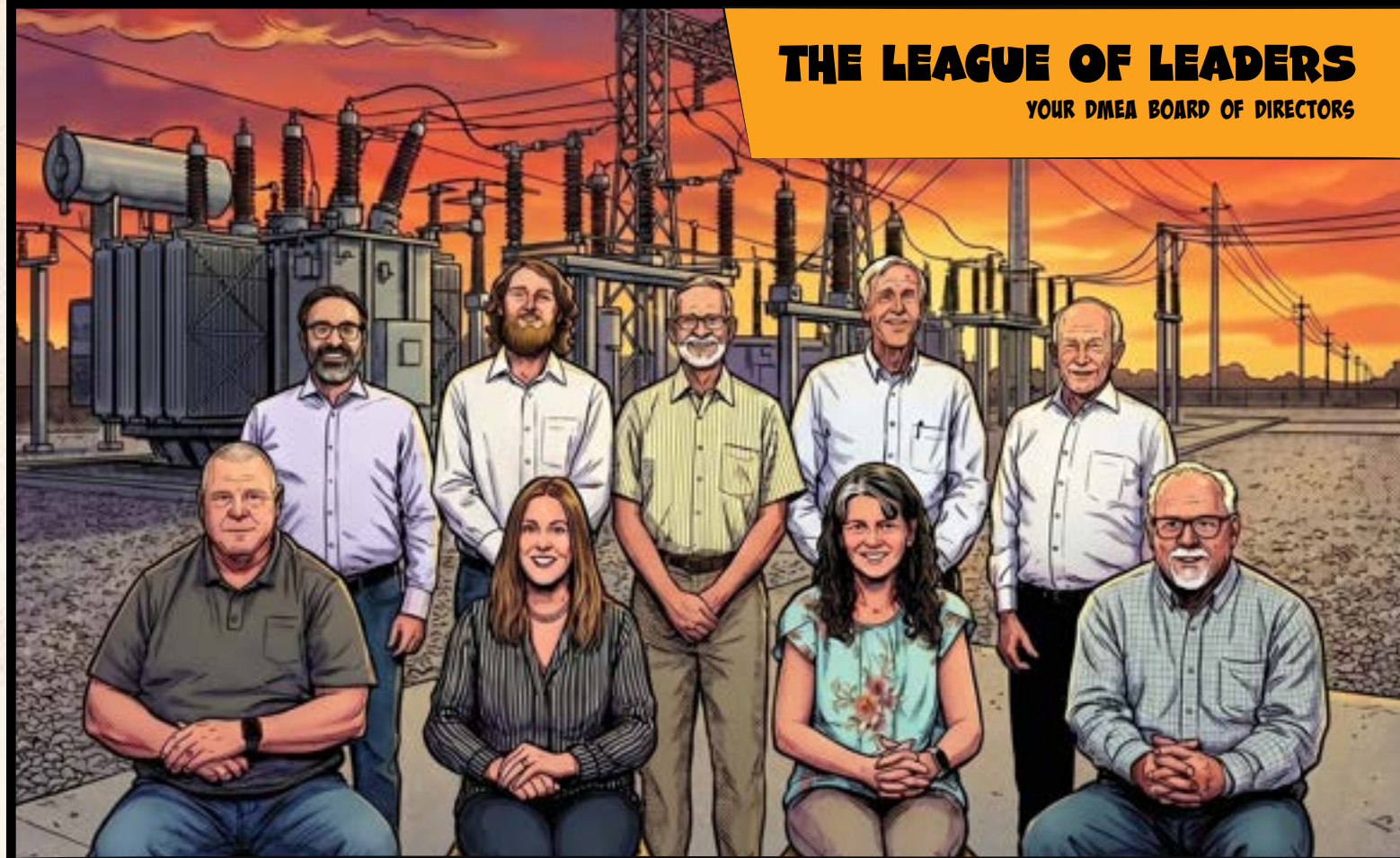
## FISCAL GUARDIANSHIP

Providing safe and reliable electric service requires thoughtful financial stewardship. This year, DMEA made the difficult but necessary decision to adjust rates in response to rising costs for materials, infrastructure, and ongoing system maintenance.



# THE LEAGUE OF LEADERS

YOUR DMEA BOARD OF DIRECTORS



<b>BACK ROW:</b>	<b>RYAN SEDGELEY</b> DISTRICT 1	<b>JACOB GRAY</b> DISTRICT 3, SECRETARY/TREASURER	<b>KEVIN WILLIAMS</b> DISTRICT 5, VICE-PRESIDENT	<b>KEN NORRIS</b> SOUTH REGION	<b>ENNO HEUSCHER</b> DISTRICT 7
<b>FRONT ROW:</b>	<b>DAMON LOCKHART</b> DISTRICT 6	<b>STACIA CANNON</b> NORTH REGION, BOARD PRESIDENT	<b>EMILY SANCHEZ</b> DISTRICT 4	<b>STEVE METHENY</b> DISTRICT 2, ASSISTANT SECRETARY/TREASURER	



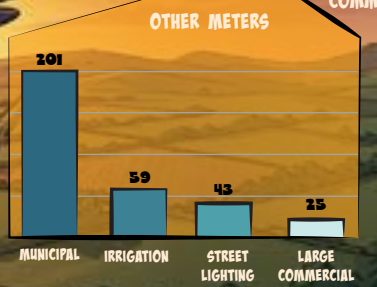
# GUARDIANS OF THE GRID

OPERATIONS & ENGINEERING

KEEPING THE POWER ON ISN'T MAGIC...

IT'S MONITORING PLANNING... AND A LOT OF MAINTENANCE.

## METER BREAKDOWN



**TOTAL METERS:**  
37,445

**NEW METERS:**  
321

## POLES

**41,016 TOTAL POLES**

EVERY SINGLE POLE NEEDS ATTENTION. NO EXCEPTIONS.

**5,138 POLES INSPECTED**

**709 POLES SET**

## VEGETATION

**3,530 TREES TRIMMED**

TREES ARE GREAT. I LIVE IN ONE! BUT IF THEY GROW THROUGH LINES, THEY THREATEN RELIABILITY AND SAFETY.

**BZZZZZZ!**

**7,840 FEET OF BRUSH REMOVED**

**3,415 TREES REMOVED**

**552,034 MW SOLD**

**108,794 KW PEAK DEMAND**

### ENERGY MIX

**LOCAL HYDRO GENERATION**  
38,727,388 KWH

**LOCAL SOLAR GENERATION**  
48,061,312 KWH

**TOTAL NET METERED ACCOUNTS:**  
2,253

**NEW NET METERED ACCOUNTS:**  
123

**TOTAL NET METERED CAPACITY:**  
16,832 KW

**NEW NET METERED CAPACITY:**  
1,113 KW

# SAFETY & RELIABILITY

STORMS HAPPEN. OUTAGES HAPPEN. BUT WE ARE GETTING YOUR POWER ON QUICKLY AND SAFELY.

**CRACK!**

**LOST TIME INJURIES:** 1

**AVERAGE ANNUAL MINUTES WITHOUT POWER:**  
115.5 MINUTES/MEMBER

MEANWHILE IN A NEIGHBORHOOD NEARBY...

**NEW SYSTEM DESIGNS:**  
574

## SYSTEM SCALE

I'M LUCKY TO HAVE A BIRDS-EYE-VIEW OF THIS SYSTEM. IT'S BIGGER THAN IT LOOKS!

**3,473 TOTAL MILES OF LINE**

**1,732 MILES OF OVERHEAD**

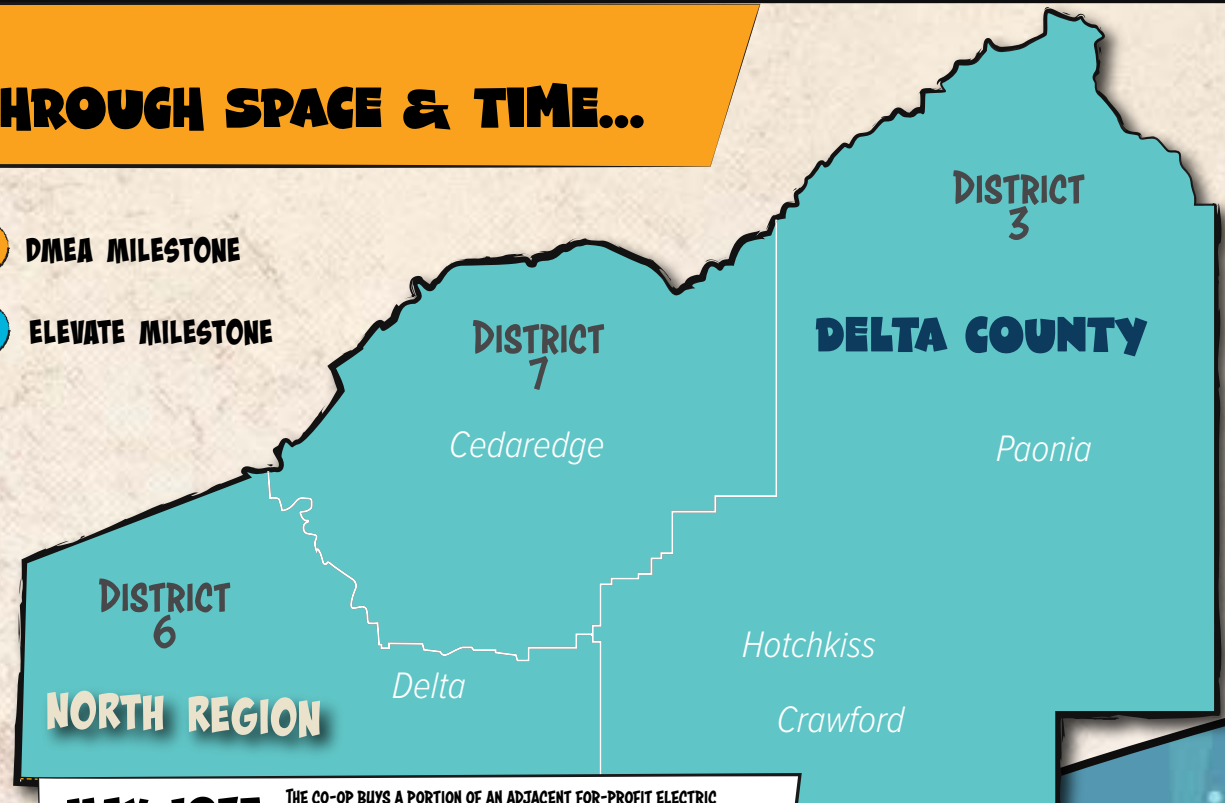
**1,588 MILES OF UNDERGROUND**

**153 MILES OF TRANSMISSION LINES**

# THROUGH SPACE & TIME...

 DMEA MILESTONE

 ELEVATE MILESTONE



**1992**  
TRI-STATE ACQUIRES COLORADO UTE'S ASSETS AND DMEA BECOMES A MEMBER OF THE GENERATION AND TRANSMISSION COOPERATIVE.

**2010**  
DMEA INVESTS IN ADVANCED METERS TO IMPROVE OPERATIONAL EFFICIENCY.

**2015**  
DMEA BOARD VOTES UNANIMOUSLY TO BUILD A FIBER INTERNET COMPANY, LATER TO BE NAMED ELEVATE.

**JULY 2020**  
DMEA EXITS TRI-STATE & INKS NEW WHOLESALE POWER SUPPLY CONTRACT WITH GUZMAN ENERGY TO REDUCE COSTS, STABILIZE RATES, AND INCREASE LOCAL RENEWABLE ENERGY.

**2025**  
ALLUVIAL POWER'S GARNET MESA SOLAR ARRAY COMES ONLINE, BRINGING MORE LOCAL, RENEWABLE GENERATION.

**MAY 1975**  
THE CO-OP BUYS A PORTION OF AN ADJACENT FOR-PROFIT ELECTRIC COMPANY'S TERRITORY AND ADDS 10,000 MEMBERS AND 730 MILES OF LINE. NAME CHANGES TO DELTA-MONTROSE ELECTRIC ASSOCIATION (DMEA).

**1975**  
WESTERN COLORADO POWER COMPANY IS BOUGHT BY THREE RURAL ELECTRIC CO-OPS: DELTA-MONTROSE ELECTRIC ASSOCIATION, SAN MIGUEL POWER, AND LAPLATA ELECTRIC. ELECTRICITY IS SUPPLIED BY THE COLORADO-UTE ELECTRIC ASSOCIATION BASED IN MONTROSE.

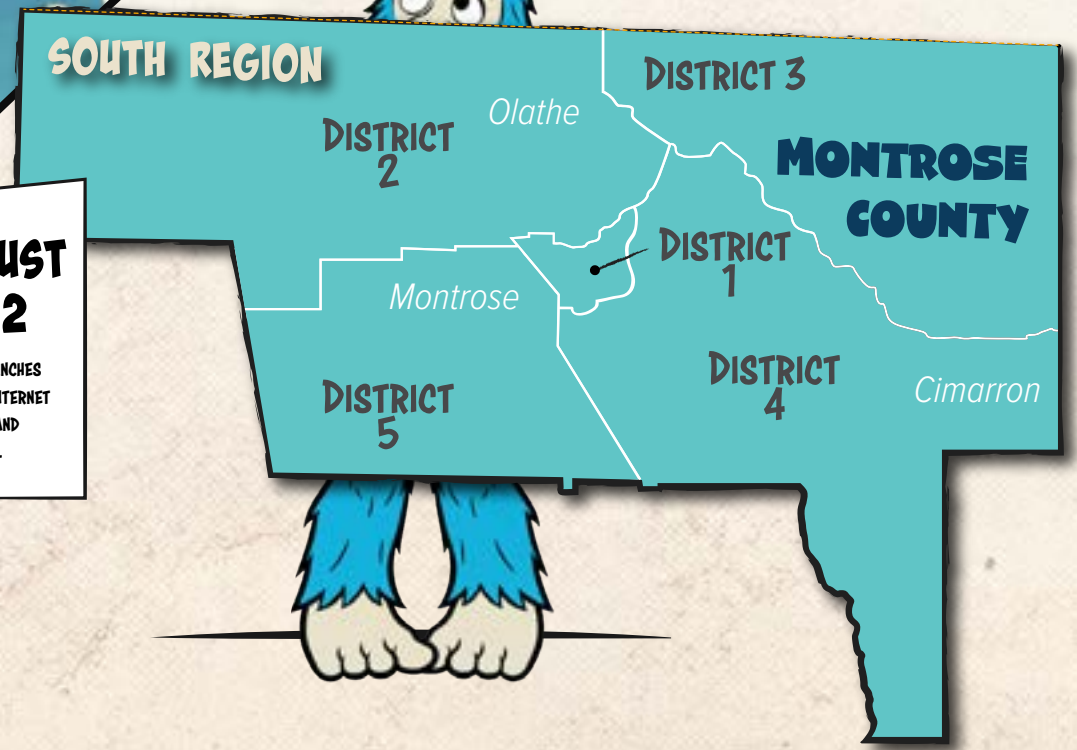
**1941**  
COLORADO-UTE ELECTRIC ASSOCIATION'S FIRST-GENERATION PLANT BEGINS PRODUCING POWER FOR RURAL CO-OPS.

**1939**  
THE CO-OP PROVIDES ENERGY TO ITS FIRST MEMBERS, 250 HOMES NEAR PEA GREEN, CO.

**1938**  
DELTA-MONTROSE RURAL POWER LINES ASSOCIATION IS INCORPORATED.

**JULY 2024**  
ELEVATE CONNECTS ITS 15,000TH CUSTOMER.

**APRIL 2025**  
TDS CUSTOMERS JOIN THE ELEVATE FAMILY THROUGH ACQUISITION.



**AUGUST 2022**  
ELEVATE LAUNCHES MULTI-GIG INTERNET FOR HOMES AND BUSINESSES.

**MARCH 2020**  
COVID-19 PANDEMIC CLOSES SCHOOLS AND BUSINESSES; ELEVATE CONNECTS 300+ STUDENTS TO 1 GIG INTERNET FOR REMOTE LEARNING.

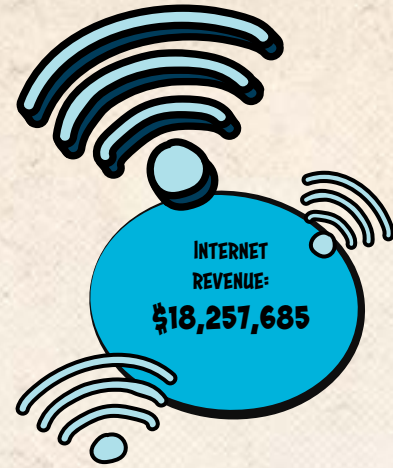
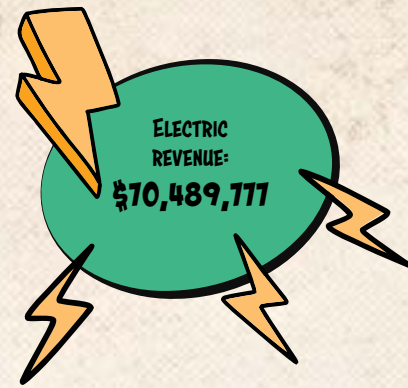
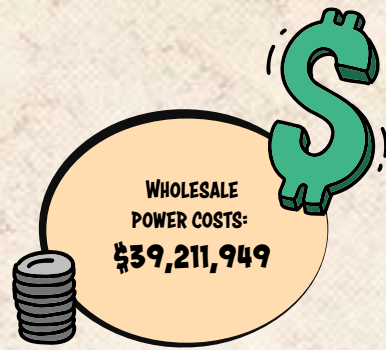
**SEPTEMBER 2016**  
ELEVATE CONNECTS ITS FIRST CUSTOMER.

**JUNE 2016**  
ELEVATE IS ESTABLISHED.



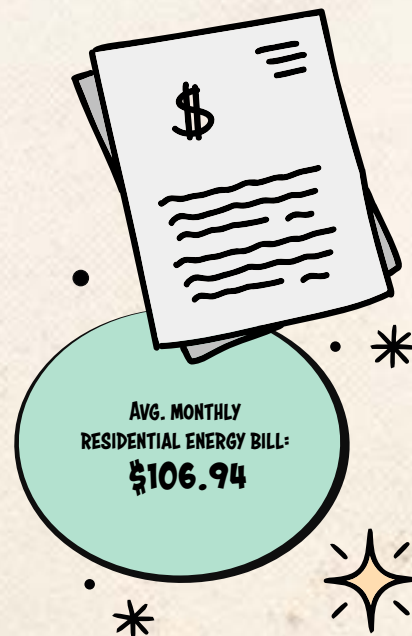
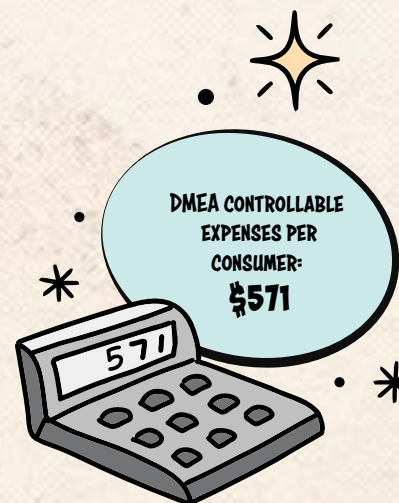
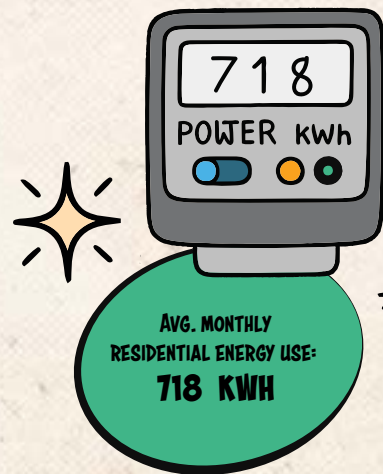
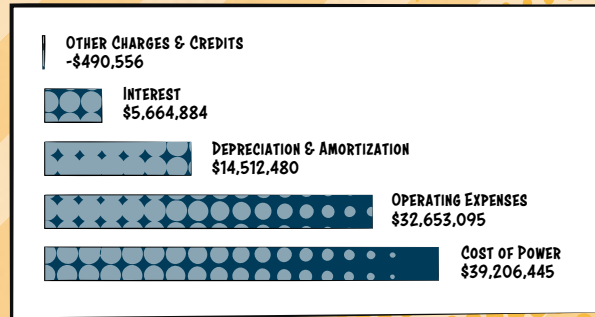
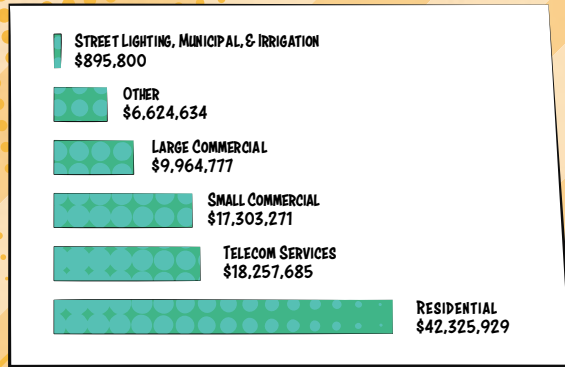
# THE MONEY MISSION

FINANCE AND ACCOUNTING



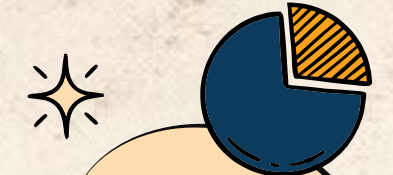
**INCOME**  
**\$95,372,096**

**EXPENSES**  
**\$91,546,348**



## CONSOLIDATED BALANCE SHEET

DESCRIPTION	AMOUNT
<b>ASSETS</b>	
TOTAL UTILITY PLANT .....	\$407,747,639
ACCUMULATED DEPRECIATION .....	(150,131,062)
NET UTILITY PLANT .....	257,616,577
INVESTMENTS IN ASSOCIATED ORGANIZATIONS .....	7,274,184
CASH AND TEMPORARY INVESTMENTS .....	7,015,896
TOTAL CASH AND INVESTMENTS .....	14,290,080
ACCOUNTS RECEIVABLE, NET .....	14,666,770
MATERIAL AND SUPPLIES .....	7,569,279
OTHER CURRENT ASSETS AND DEFERRED DEBITS .....	1,521,021
OTHER ASSETS .....	815,227
TOTAL OTHER ASSETS .....	24,572,297
<b>TOTAL ASSETS .....</b>	<b>\$296,478,954</b>
<b>LIABILITIES</b>	
ACCOUNTS PAYABLE .....	\$8,819,558
ACCRUED TAXES AND OTHER LIABILITIES .....	5,857,808
OTHER DEFERRED CREDITS .....	58,409,695
LINE OF CREDIT .....	4,000,000
CURRENT MATURITIES OF LONG-TERM DEBT .....	8,123,918
TOTAL CURRENT AND OTHER LIABILITIES .....	85,210,979
LONG-TERM DEBT .....	138,039,241
<b>MEMBERS' EQUITY</b>	
PATRONAGE CAPITAL .....	\$68,065,488
OTHER EQUITIES .....	5,163,246
TOTAL MEMBERS' EQUITY .....	73,228,734
<b>TOTAL LIABILITIES AND MEMBERS' EQUITY .....</b>	<b>\$296,478,954</b>



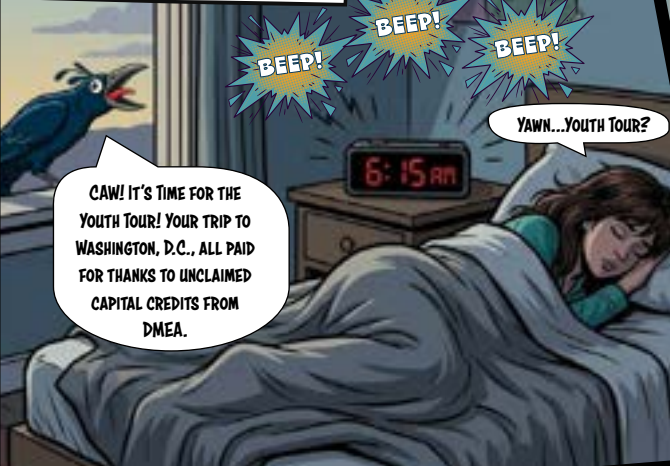
GIGFOOT? CAW!  
WE HAVE CAPITAL CREDITS FOR YOU.  
I KNOW YOU'RE OUT THERE!



# TODAY'S BRIGHTER TOMORROW

## COMMUNITY RELATIONS

FROM WESTERN COLORADO TO THE CAPITOL...



CAW! IT'S TIME FOR THE YOUTH TOUR! YOUR TRIP TO WASHINGTON, D.C., ALL PAID FOR THANKS TO UNCLAIMED CAPITAL CREDITS FROM DMEA.

YAWN... YOUTH TOUR?



OH, THAT'S TODAY!

PLANES. AIRPORTS. BUS RIDES...



...THEN--BOOM! I'M LAUGHING AND MEETING NEW FRIENDS.



WHOOA! WASHINGTON, D.C. MONUMENTS. HISTORY. EVERYWHERE.

IT FELT LIKE A FIELD TRIP ON STEROIDS. WE MET THE PEOPLE BEHIND THE CO-OPS. THE POLICY-MAKERS. THE COOPERATIVES HELPING COOPERATIVES. THEY HELP CO-OPS LIKE DMEA WHO SERVE THEIR COMMUNITIES.



SUDDENLY, IT CLICKED. CO-OPS AREN'T JUST ABOUT ELECTRICITY--THEY'RE ABOUT PEOPLE. THOSE UNCLAIMED CAPITAL CREDITS? THEY COME BACK INTO COMMUNITIES. INTO OPPORTUNITIES. TO STUDENTS LIKE ME.



THIS ISN'T JUST SIGHTSEEING. IT'S INSPIRATION. IT'S A CHANCE TO DISCOVER A PATH WE NEVER IMAGINED AND MEET NEW FRIENDS--FOR LIFE!

AND TO THINK, I COULD'VE SLEPT THROUGH MY ALARM AND MISSED IT!

**29,975**  
SMARTHUB ACCOUNTS

**13**  
CUSTOMER SERVICE  
TEAM MEMBERS

**55,080**  
PHONE CALLS  
ANSWERED

**14,514**  
EMAIL RESPONSES

**\$46,280**  
DMEA COMMUNITY GIVING

**\$46,900**  
ELEVATE COMMUNITY GIVING

**21**  
SCHOLARSHIP  
RECIPIENTS

**\$100,000**  
IN SCHOLARSHIPS

**\$50,466**  
OPERATION ROUND UP  
DISTRIBUTIONS

**6,700**  
MEMBERS ENROLLED IN  
OPERATION ROUND  
UP

**81**  
ACSI SCORE

AMERICAN  
CUSTOMER  
SATISFACTION INDEX  
(AVERAGE CO-OP  
SCORE= 78)

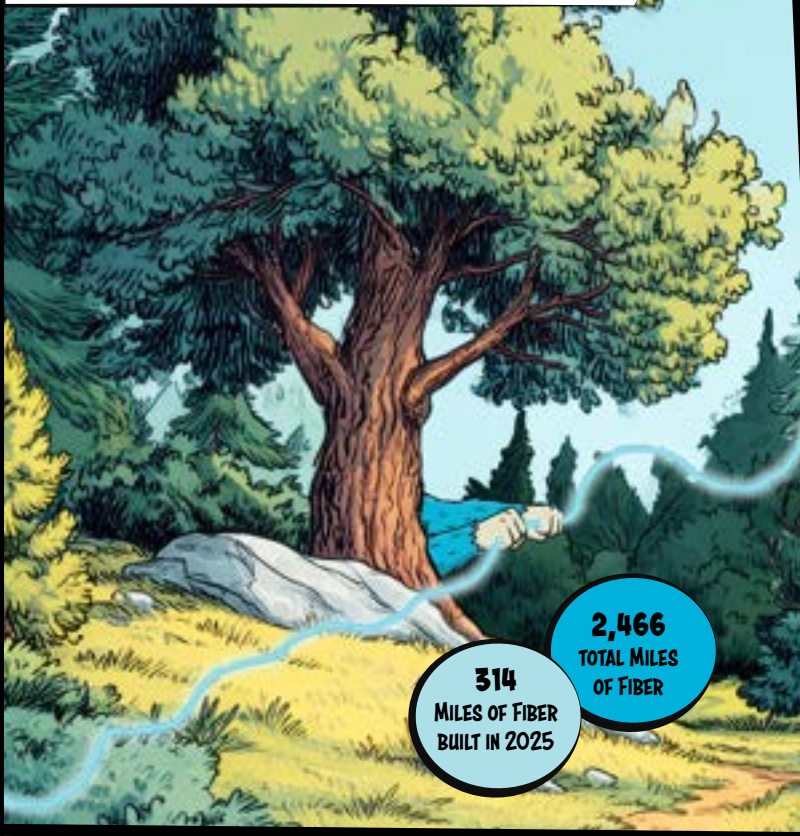
**\$9,265**  
CRISIS FUND  
DISTRIBUTIONS

**\$129,430**  
UNCLAIMED CAPITAL  
CREDIT DISTRIBUTIONS

# GIGFOOT REVEALED!

ELEVATE INTERNET

A MYSTERIOUS CREATURE HAS BEEN SPOTTED AROUND FIBER CONSTRUCTION SITES.

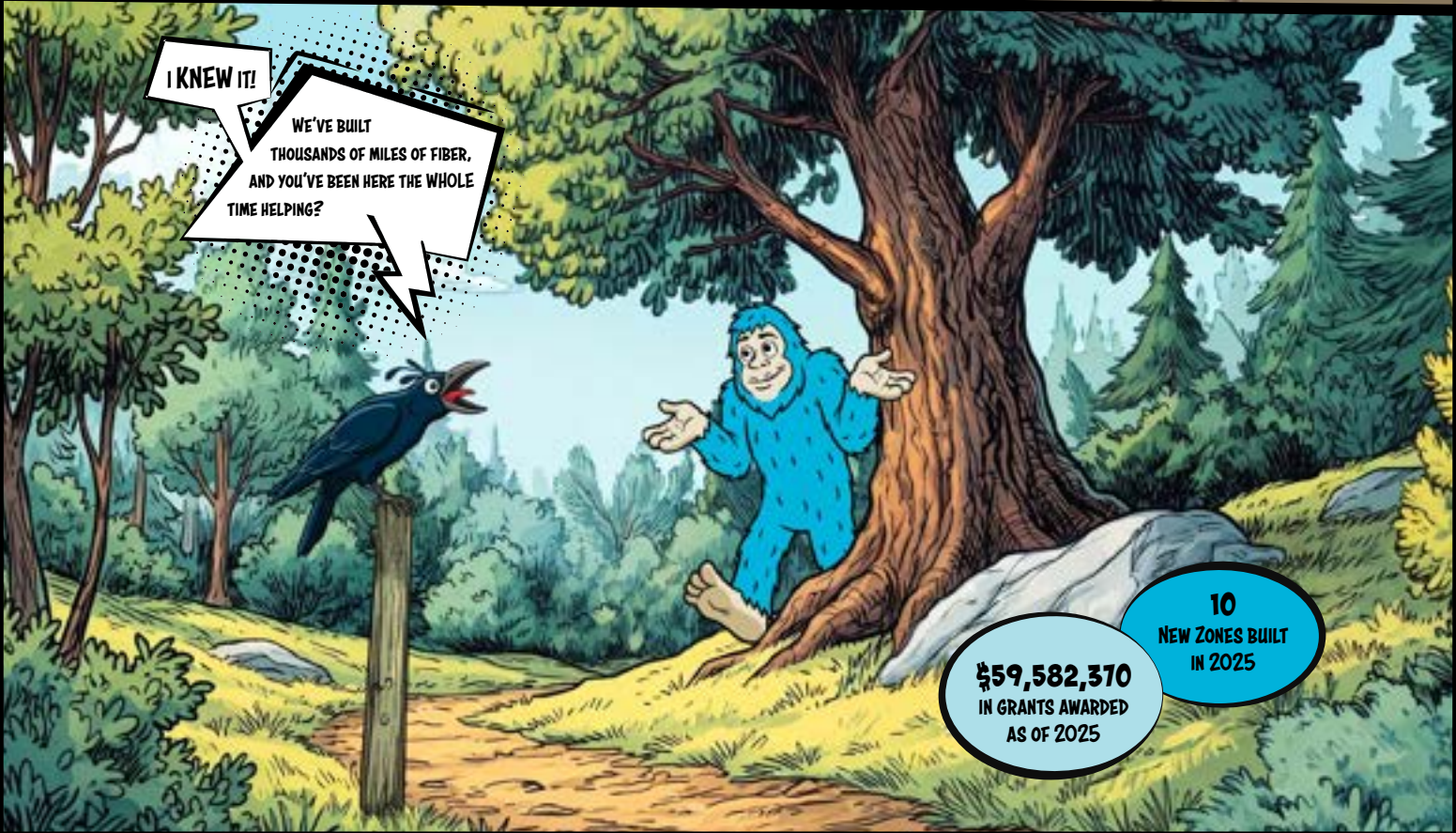


**314**  
MILES OF FIBER BUILT IN 2025

**2,466**  
TOTAL MILES OF FIBER



EVERY TIME WE FINISH A FIBER ZONE... SOMEONE LEAVES GIANT FOOTPRINTS.



I KNEW IT!  
WE'VE BUILT THOUSANDS OF MILES OF FIBER, AND YOU'VE BEEN HERE THE WHOLE TIME HELPING?

**10**  
NEW ZONES BUILT IN 2025

**\$59,582,370**  
IN GRANTS AWARDED AS OF 2025

**3,604**  
ELEVATE IQ USERS (APP ADOPTION)

**72**  
NET PROMOTER SCORE

NET PROMOTER SCORES RANGE FROM -100 TO 100, WITH LARGE NATIONAL INTERNET COMPANIES AVERAGING A SCORE OF -30.

**APRIL 2025**  
TDS CUSTOMERS JOIN THE ELEVATE FAMILY THROUGH ACQUISITION

**18,000+**  
INTERNET CUSTOMERS

**4**  
YEARS VOTED BEST IN THE VALLEY & BEST IN DELTA COUNTY

Wow!  
YOU'VE WORKED HARD FOR A LONG TIME BEHIND THE SCENES, BUDDY! NOW IT'S TIME FOR SOME RECOGNITION.

**GRUNT**

## MEET GIGFOOT:

LONGTIME LOCAL LEGEND SEEKING MEANINGFUL CONNECTION... PREFERABLY FIBER-POWERED.

FOR YEARS, HE WAS THE MYSTERIOUS BLUR IN YOUR TRAIL CAM, THE FUZZY PHOTOBOMB IN YOUR FAMILY HIKE SELFIES, AND THE REASON YOUR DOG BARKED AT THE TREES. NOW, HE'S READY TO MEET YOU!

<p><b>HOBBIES:</b></p> <ul style="list-style-type: none"> <li>• LONG HIKES IN THE WOODS</li> <li>• HIDING IN CAVES</li> <li>• GAMING LIKE A SMURF</li> </ul>	<p><b>FAVORITE FOOD:</b></p> <ul style="list-style-type: none"> <li>• CHEESE BALLS (CAN CONSUME OVER 100 IN ONE SITTING!)</li> </ul>
<p><b>STRENGTHS:</b></p> <ul style="list-style-type: none"> <li>• FAST. JUST... FAST.</li> <li>• RELIABLE AND COMMITTED TO ELEVATE CUSTOMERS</li> </ul>	<p><b>DISLIKES:</b></p> <ul style="list-style-type: none"> <li>• LAG AND BUFFERING</li> <li>• BLURRY PHOTOS (WE CAN DO BETTER NOW, PEOPLE)</li> </ul>