

# totem

The Friend-Finding Compass



USER MANUAL



Totem is dedicated to making live events **safer**,  
more **immersive**, and more **beautiful**.

**Please read this manual**  
before using your Totem Compass,  
and keep it for future reference.

**Scan the QR code** on the back of your Totem  
Compass to register your device and update your  
software.

# FCC Compliance

This device complies with part 15 of the FCC Rules.

**Operation is subject to the following two conditions:**

- (1) This device may not cause harmful interference, and
- (2) this device must accept any interference received, including interference that may cause undesired operation.

Changes or modifications not expressly approved by Totem could void the user's authority to operate this equipment.



FCC ID: 2BMQS-1

# This Package Contains:

One (1) **Totem Compass**

Two (2) elastic **Lanyards**

One (1) **USB-C Cable**



# NOW AVAILABLE:

## The Totem Compass App



Manage Bonds, update software with one click, view real-time maps, unlock new features, and more!



[Download for iOS](#)



[Download for Android](#)

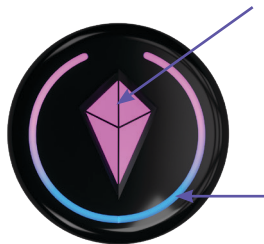
# Table of **Content**

<b><u>Your Totem Compass</u></b> .....	<b>6-9</b>
<u>Touch Crystal &amp; Halo</u> .....	6
<u>Buttons &amp; Ports</u> .....	7
<u>Vibe Mode</u> .....	8
<u>Compass Mode</u> .....	9
<b><u>Get Started</u></b> .....	<b>10-19</b>
<u>Power On &amp; Off</u> .....	10-11
<u>Your Totem on Power Up</u> .....	12-13
<u>Establish Satellite Connection</u> .....	14-15
<u>Bond your Totems</u> .....	16-17
<u>Navigate</u> .....	18-19
<b><u>Additional Features</u></b> .....	<b>20-31</b>
<u>Send an SOS Alert</u> .....	20-21
<u>Bond Lights &amp; Colors</u> .....	22-23
<u>Remove Bonds</u> .....	24-25

# Table of **Content**

<u>Additional Features (cont.)</u> .....	20-31
<u>Brightness Settings</u> .....	26-27
<u>Touch Crystal Colors</u> .....	28-29
★ <u>Software Updates</u> .....	30
<u>Support &amp; Troubleshooting</u> .....	31
<u>Care &amp; Maintenance</u> .....	32-33
<u>Conditions for Use</u> .....	34
<u>Battery Life &amp; Range</u> .....	35
<u>Performance Variables</u> .....	36-37
<u>Technical Specifications</u> .....	38-39
<u>Warranty Information</u> .....	40
<u>Return Policy</u> .....	41

## Touch Crystal & Halo



### Touch Crystal

#### Functions:

- **Add Bonds**  
(press + hold)
- **Remove Bonds**  
(triple-tap)
- **Change Colors**  
(single-tap)

### Halo

#### Displays:

- **Vibe Mode**  
(vertical orientation)
- **Bond Lights**  
(horizontal orientation)
- **Searching for Satellite**  
(horizontal orientation)

\*Touch Crystal can **only** be used in **horizontal orientation**



## Buttons & Ports

### SOS Button

#### *Functions:*

- **SOS Alerts**  
(press + hold)
- **Software Updates**  
(triple-click)



### Power Button

#### *Functions:*

- **Power On**  
(single-click)
- **Power Off**  
(press + hold)
- **Adjust Brightness**  
(single-click)

### USB-C Port

#### *Functions:*

- **Charging**



## Vibe Mode

*(vertical orientation)*

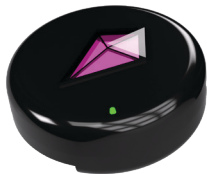


### *Available Features:*

- Vibe
- Send SOS Alerts
- Receive SOS Alerts
- Adjust Brightness

## Compass Mode

*(horizontal orientation)*



### ***Available Features:***

- Bonding
- Navigation
- Send SOS Alerts
- Receive SOS Alerts
- Bond Removal
- Adjust Brightness
- Change Crystal Color

## 1) Power On & Off

### **To Power On:**

1. Click Power Button once

### **To Power Off:**

1. Press and hold Power Button while device is powered on

## Power On



## Power Off



## 2) Your Totem on Power Up

When your Totem powers on, the Halo displays a **Battery Level Indicator**:

- **Full Green Halo = 100%**
- **Yellow Half-Filled Halo = 50%**
- **Yellow Quarter-Filled Halo = 25%**
- **Red, Flashing Touch Crystal = Low Battery**

**Note:** When battery level is at 25% or below, Touch Crystal functionality is disabled

**100% Charged**



**50% Charged**



**25% Charged**



**Low Battery**



## 3) Establish Satellite Connection

1. **Go outside** and make sure you have a clear view of the sky overhead with horizon in view
2. **Step away from roofs**, walls, and other large structures
3. **Wait 10-15 minutes** for your Totem to establish Satellite Connection\*

*\*Enable Eco Mode to speed up satellite connection process*





searching for  
satellite connection



satellite connection  
nearby



satellite connection  
successful



satellite connection  
successful with Bond  
established

## 4) Bond your Totems

1. Hold two Totems **together in Compass Mode.**
2. Press and hold both Touch Crystals **simultaneously.**

### **When Bonding is successful:**

1. The blue light on your Totem's Halo will change to the color of your new Bond.
2. The Halo will collapse into a single LED and jump into your Touch Crystal

**Note:** Your Totem Compass will always remember Bonds unless you remove them

### How to Bond



### Bonding Success



### Already Bonded



### Max. Bonds Reached



## 5) Navigate

1. Establish **Satellite Connection**  
(see page 14)
2. Move **20 meters away** from Bonded peer
3. Hold Totem in Compass Mode and **spin in a circle once** to calibrate
4. Follow the **direction of Bond Light** on Halo
5. As you move toward Bonded peer, Bond Light will spread then collect into Touch Crystal



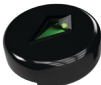
Calibration Success



Bonded peer is >100  
meters away



Bonded peer is 50-20  
meters away



Bonded peer is <10  
meters away

**Note:** If you or a Bonded peer are out of peer-to-peer range, your Bond Light will begin to “**breathe**”, indicating **stale location data**.

## Send an SOS Alert

### To send SOS Alert:

1. **Press and hold SOS Button** until red light behind button begins to blink

### When Bonded peer receives SOS Alert:

1. Their **Touch Crystal will blink** “SOS” in morse code; **Bond Light will blink rapidly** when Totem is in Compass Mode

### To disable SOS Alert:

1. **Press and hold SOS Button** until red light stops blinking

..... additional features

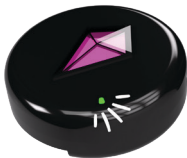
Send SOS



Disable SOS



Receive SOS



## Bond Lights & Colors

Bond Light colors are **automatically assigned** to peers based on **Bonding order**:

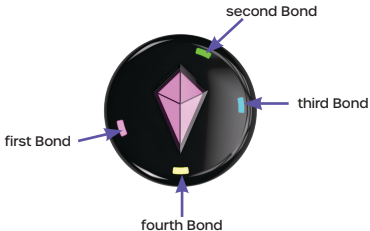
- First Bond = **pink**
- Second Bond: **green**
- Third Bond = **blue**
- Fourth Bond = **yellow**

**To check colors of Bonded peers:**

1. Move Totems **together**
2. **Touch Crystal will display color of**  
Bonded peer



## additional features



### Bonded Peer Check



## Remove Bonds

1. **Triple-tap** Touch Crystal while Totem is in Compass Mode
2. **Single-tap** Touch Crystal to cycle between Bonded peers
3. **Press and hold** Touch Crystal to remove selected Bond

**Note:** Bonded peers that you remove will **no longer be able to track you in real-time.**

Enter Bond Removal



Cycle Bonded Peers



Remove Bond

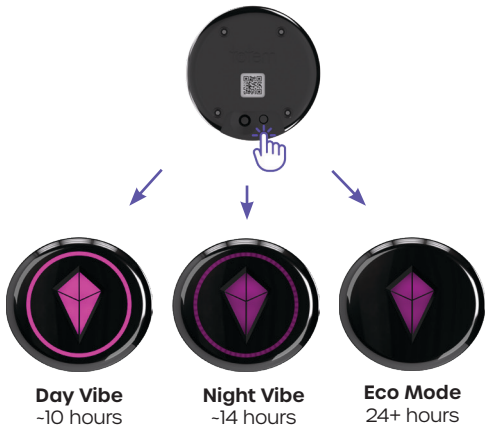


## Brightness Settings

Your Totem has **3 brightness settings** that impact battery life:

1. **Day Vibe** (~10 hours)
2. **Night Vibe** (~14 hours)
3. **Eco Mode** (24+ hours)

To toggle between brightness settings, **click the Power Button once** while your Totem is powered on.



## Touch Crystal Colors

Touch Crystal colors are for **aesthetic purposes only** and **do not correlate** to Bond Light colors.

### To change your Touch Crystal color:

1. Enter **Compass Mode**
2. **Single-tap** Touch Crystal to change color
3. **Continue tapping** Touch Crystal to cycle through twelve different colors

## Available Crystal Colors



Blue



Indigo



Magenta



Hot Pink



Orange



Yellow



Yellow-Green



Green



Blue-Green



Teal



White



Aqua

## Software Updates

Totem releases **periodic, free Software Updates** downloadable straight to your device.

Remember to update your Totem Compass **before** you leave for any outdoor event.



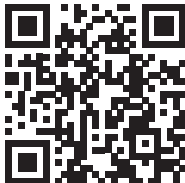
scan or [click here](#) to  
download software



## Support & Troubleshooting

If you encounter an issue with your Totem Compass, ensure you have updated your device to the **latest software version**.

For all Totem Compass Resources & Support,  
**scan the QR code below:**



scan or [click here](#) for  
Totem Support

# Care & Maintenance

## Handling & Storage

- Handle with care and store in a soft pouch or case when not in use.
- Avoid placing the device in pockets or bags with sharp objects.

## Water Resistance

- The Totem Compass can withstand light rain and splashes but should not be submerged in water.
- Dry immediately if exposed to moisture.

## Charging

- Ensure the charging port is free of dirt or moisture before connecting.

## **Cleaning**

- Fingerprints and smudges may appear on the surface. Use a soft, dry microfiber cloth to gently wipe the device.
- For deeper cleaning, use a slightly damp cloth with water or mild soap. Avoid harsh chemicals or abrasive materials.

## **Environmental Care**

- Prolonged exposure to direct sunlight or extreme temperatures may affect battery performance and device longevity.
- Keep the device away from excessive dust, sand, or debris, especially in outdoor environments.

# Conditions for Use

- Use the device **outdoors in open areas** with a clear view of the horizon to maintain a reliable Satellite Connection.
- Keep the device at least **one foot away** from **smart phones, iron-based objects** or **heavy metal structures**, as these can interfere with accuracy and satellite connection.
- **Protect from shock** or hard impact.
- **Do not** modify or disassemble.
- **Do not** expose to open flames, submerge in water, or use underwater.

# Battery Life & Range

## Maximum Battery Playtime\*:

- Day Vibe: ~10 hours
- Night Vibe: ~14 hours
- Eco Mode: 20+ hours

## Charging Time:

- Charges in ~45 minutes via standard USB-C
- Charging Light turns green on full charge

## Range:

Peer-to-peer range is **~1 kilometer**, but Unity Mesh Network™ extends that range for all Totems in the network.

*\*Battery Playtime may vary based on environmental conditions and usage. Battery life is subject to continued improvement.*

# Performance Variables

The Totem Compass leverages **Global Navigation Satellite Systems** (GNSS) to provide accurate positioning and navigation. However, several factors can influence its performance:

**Environmental Obstructions:** Physical obstructions such as dense foliage, tall buildings, or mountainous terrain can cause signal reflection or blockage, leading to multipath errors and decreased positional accuracy.

**Atmospheric Conditions:** Variations in the Earth's ionosphere, particularly during solar flares and geomagnetic storms, can disrupt GNSS signals.

**Solar Activity:** Elevated solar activity can induce scintillation events in the ionosphere, degrading the quality of satellite signals. In standard GNSS receivers, mild scintillation can reduce position accuracy by several meters, while severe scintillation can cause signal loss.

**Weather Conditions:** Adverse weather can have minor effects on the strength and quality of GNSS signals, potentially impacting the device's performance.

**Electromagnetic Interference:** Proximity to strong electromagnetic sources or environments with high radio frequency interference can disrupt GNSS signal reception, leading to potential inaccuracies.

# Technical Specifications

**Model:** Totem Compass Gen 1

**Power Adapter Charging Voltage:** 5V

**Max Charging Current:** 1A

**Battery Type:** LiPo ion

**Battery Capacity:** 1000 mAh

**Wireless Frequency/Protocol:** 2.4GHz

**Charging Port:** USB type C

**Operating Temperature:** -10°-60°C / 14°-140°F

**Housing Material:** MABS

**Size:** 58x58x24 mm/ 2.28x2.28x0.95 in

**Weight:** 54.17g/0.119lb



**Safety Features:** Over-voltage and under-voltage protection to ensure safe operation within the specified voltage range.

- Thermal shutdown prevents the device from overheating during high-stress conditions
- Designed with safeguards to prevent damage from short circuits

**Lanyard Material:** 100% polyester braided around a core of 10 natural latex threads

**Lanyard Relaxed Size:** 360 x 2.5 mm

**Lanyard Stretched Size:** 620 x 2.5 mm

**USB-C Cable Type:** Type A to C

**USB-C Max Input:** Max 2A

# Warranty Information

Your limited warranty starts on the date of your purchase and lasts for **one (1) year**. The Warranty Period is not extended if we repair or replace a warranted product. We may change the availability of this limited warranty at our discretion, but any changes will not be retroactive.

This limited warranty covers defects in materials and workmanship in products purchased from the Website. **For more information:**



scan or [click here](#) to  
view Terms of Sale

# Return Policy

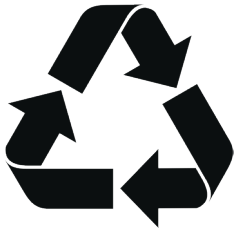
Except for any products designated on the Website as non-returnable, we will accept a return of **undamaged products for a refund of your purchase price**, less the original shipping and handling costs, provided such return is made **within sixty (60) days of delivery\*** and provided such products are returned in their **original condition and packaging**.

**For more information:**



scan or [click here](#) to  
view Terms of Sale

*\*Return window subject to extend based on reason for return*



This package contains **recyclable materials**.

Please dispose of it **responsibly** by recycling  
where facilities exist.



**©Totem, Inc.**

**All Rights Reserved.**

**Designed in Tennessee**

**Made in China**

