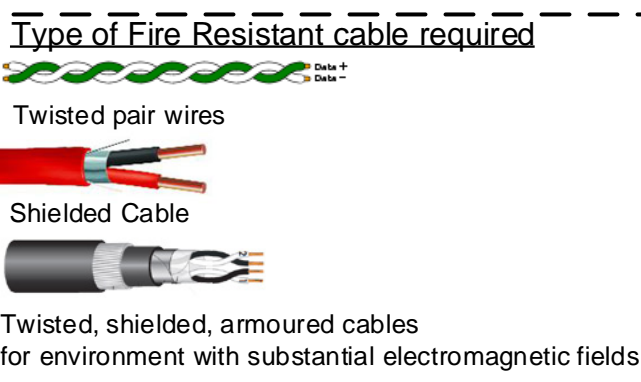
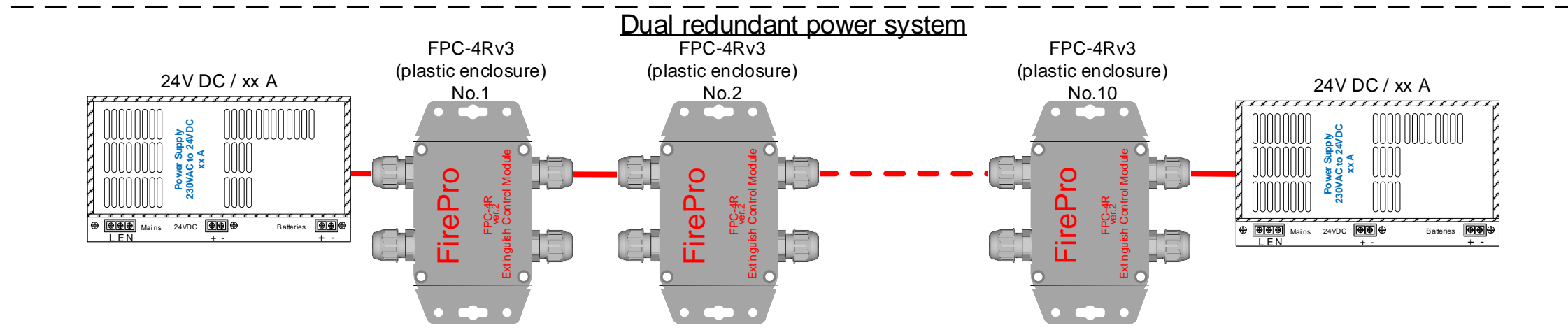
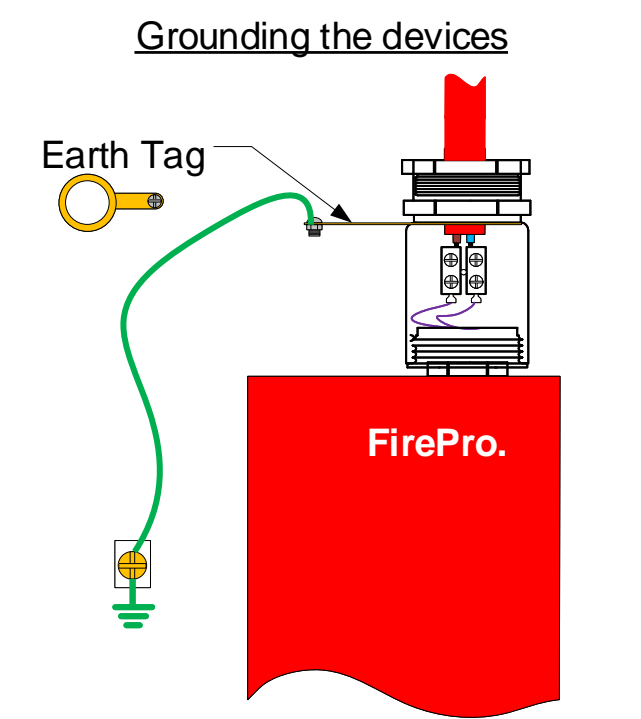
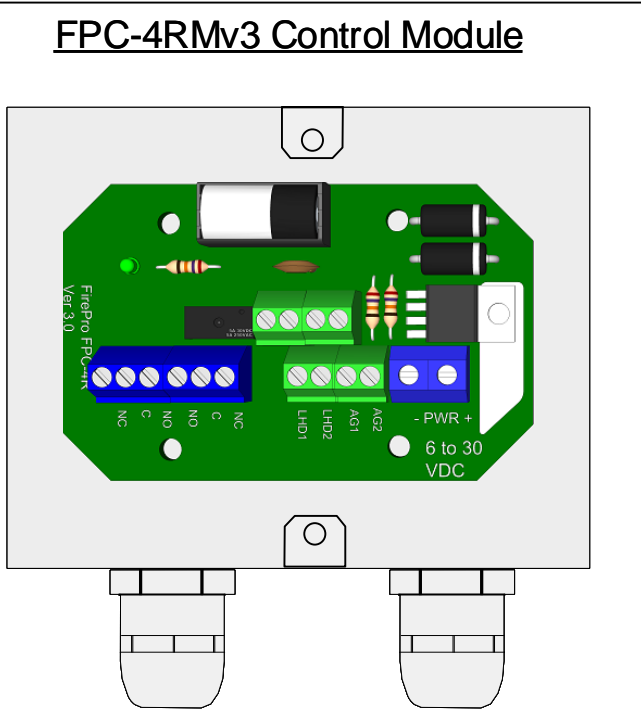
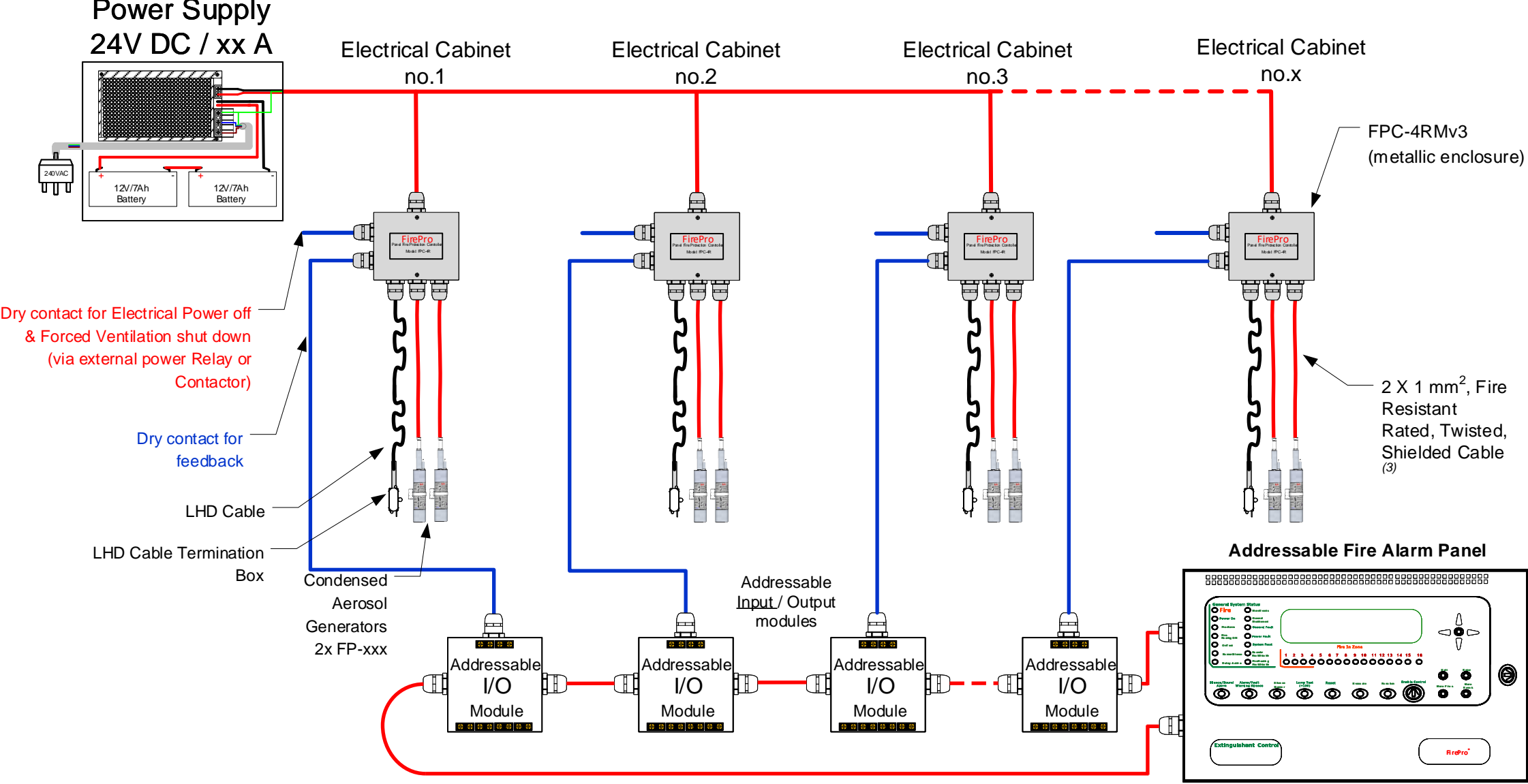


Designing an extinguishing system

With **FirePro** Aerosol Generators

Indicative System Diagram

Electrical Panel Protection (Feedback to Addressable panel)



NOTES - DISCLAIMER:

- Any information provided by FirePro Systems, relevant to the design and application of the project is solely for guidance purposes and can be considered as such only.
- The responsibility to produce the actual design documentation, such as construction and as-built drawings, circuit diagrams, specifications etc., falls within the scope of the contractor responsible for the installation and commissioning (and certification if applicable) of the project. It is therefore, the contractor's sole responsibility to ensure that all applicable National, International and local standards, laws and regulations are followed and applied.
- Any cable sizes shown on FirePro documentation are purely indicative, since actual cable sizes can vary, depending on actual cable lengths (project specific) and respective voltage drop calculations, which do not fall within scope of FirePro Systems.