

LIVE WITHOUT LIMITS

Introducing CORE, Fountain Life's essential longevity experience, offering comprehensive, AI-Guided Diagnostics, expert physician insights, and Zori AI, your personalized medical assistant on call, anywhere, anytime.

A longevity experience that's proactive and preventative at its core.



AI-Guided
Diagnostics



Physician Review
of Results



Member App +
Zori AI Medical
Assistant



A CORE Experience is an investment you make today that fuels your healthspan and longevity tomorrow.

With the world's best AI-Guided Diagnostics suite, physician-led insights, and a personalized optimization plan, this essential longevity membership empowers you to detect risks early, prevent the preventable, and take proactive control of your healthspan. Because at the CORE of living without limits is the choice to begin today.

CORE Experience includes

- AI-guided diagnostics that detect hidden risks and optimize prevention.
- One-on-one physician review of results & health optimization plan.
- Member App + Zori AI medical assistant.



FOUNTAIN LIFE™

(917) 672-9073 | care@fountainlife.com | fountainlife.com

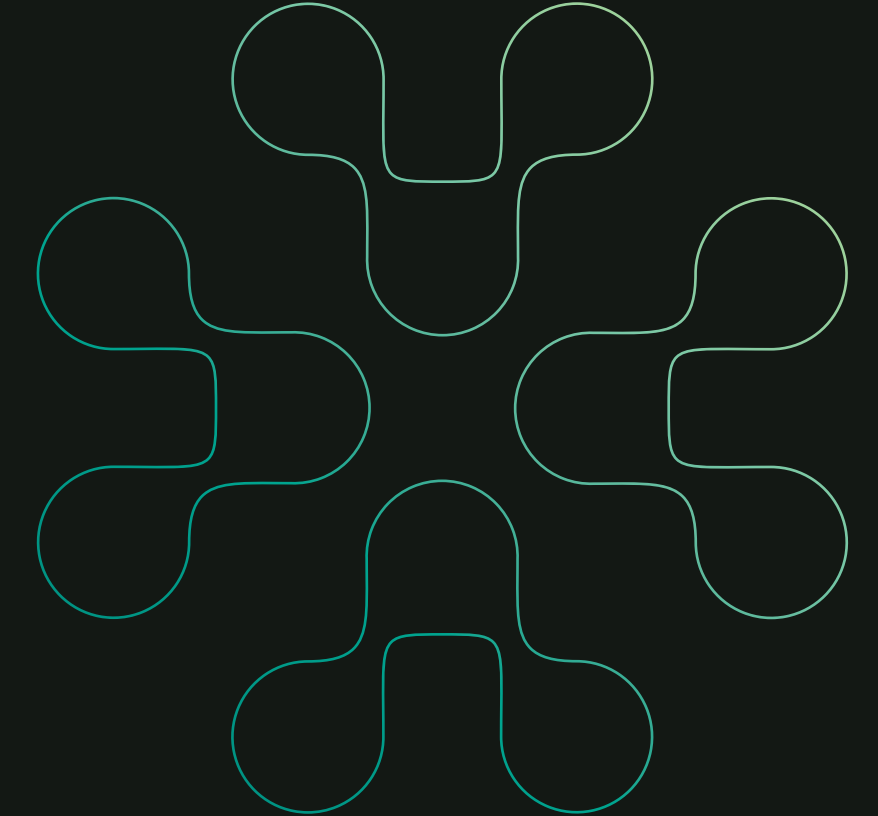
• Dallas • Naples • New York • Orlando

CORE

The Essential
Longevity Experience



FOUNTAIN LIFE™



Welcome to
the future of you

Fountain Life is the world's most advanced longevity experience, exclusively powered by AI. We believe your best years are still ahead, so we combine the most advanced diagnostic technologies, AI-powered insights, and Restorative Therapeutics to help you not only add years to your life—but life to your years.



AI-Guided Diagnostics



Prevention starts with powerful insights. The CORE Experience blends our best-in-class AI-guided precision diagnostic suite with science-led insights into the state of your health. By proactively identifying risks early for early-stage cancer, cardiac disease and metabolic dysfunction, you build the foundations of a vibrant and lasting healthspan.

See what others can't.
Optimize what's ahead.

Early is everything

Whole Genome Sequencing

Maps your complete DNA to uncover genetic risks, optimize prevention, and personalize your longevity strategy.

Comprehensive Blood Biomarker Panel

Analyzes hundreds of critical markers to provide deep insights into your overall health, aging, and disease risk.

AI-Guided Imaging

Advanced MRI and CT scans of your body, heart, and lungs driven by groundbreaking AI technology to detect hidden diseases like early and reduce risks to optimize your healthspan

Bone density & body composition scan

Measures bone strength, muscle, and fat to prevent frailty and track overall health

Electrocardiogram (ECG)

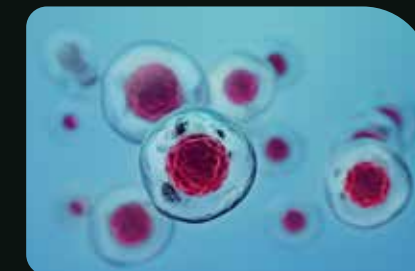
Records your heart's electrical signals and rhythm to spot issues fast and protect long-term heart health.

Optional Early Detection Cancer Test

A blood-based multi-cancer early detection test can help screen for many of the deadliest cancers that don't have recommended screening today.



Physician Review of Results



The clarity to act today becomes *the vitality to live extraordinarily tomorrow.*

Prevent the preventable

Data without direction is just noise. That's why the CORE Experience includes a comprehensive review with a longevity-trained physician who interprets your diagnostic results and delivers a personalized optimization plan tailored to your unique biology. You'll walk away not just informed, but empowered to take proactive control of your healthspan.

Personalized Physician Review on Results

Our longevity expert will walk you through your results, providing an exact and complete picture of your health profile. Unlike traditional medical models, there's no guesswork, no blind spots, just clarity.

Option to update to APEX Membership

After the CORE Experience, you have the option to upgrade to APEX, our premier longevity membership, with continued AI-Guided Diagnostics, life-changing Restorative Therapeutics that reverse aging at the cellular level, and Always on Care access — a personal medical team at your disposal 24/7.



A membership that will change your life

"One out of three people will face cancer, heart disease, or Alzheimer's. And most will never see it coming. A yearly physical? It's a stethoscope, a reflex check, maybe some blood. That's not knowing. That's gambling.

In just one day, Fountain Life can map an exact and complete picture of your health profile. No guesswork. No blind spots. From there, we create a personalized plan that proactively prevents disease and optimizes your healthspan."

Tony Robbins
Co-founder, Fountain Life

Meet Zori, your always-on longevity expert.



The CORE Experience gives you access to our exclusive member app and Zori AI, your personalized AI medical assistant, medically trained to answer any questions about your data and further optimize your health.

Zori is deeply integrated into the CORE Experience, turning your biomarker insights, diagnostics, and treatment options into clear, precise answers and personalized advice.

Zori is always on, always learning, and always aligned with your personalized longevity strategy.

Longevity is a choice
guided by insight