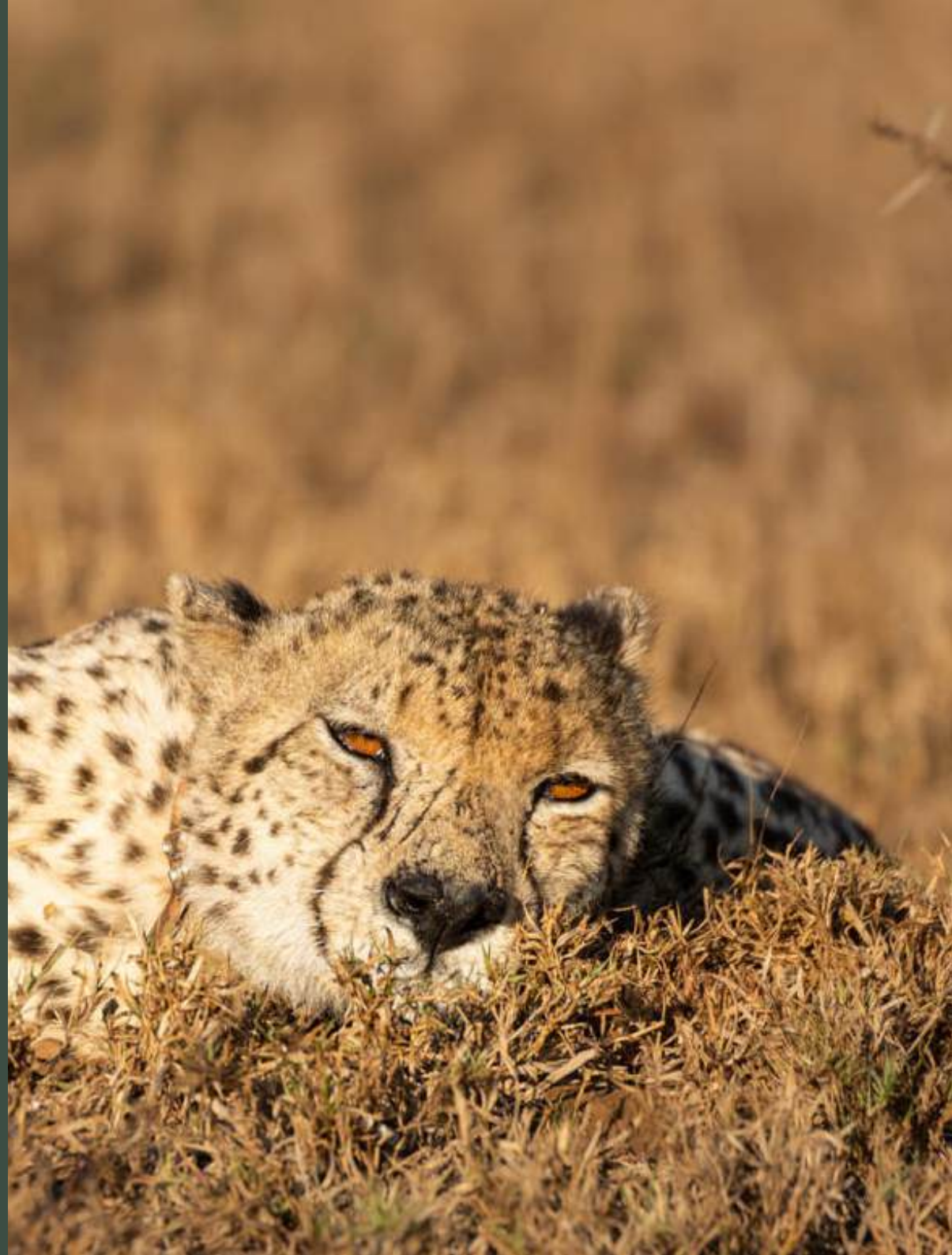


Conservation Focused **SAFARIS**

WITH



Conservation Focused SAFARI



Our Conservation Safari is an opportunity to join the experts in the field, a chance to assist the conservationists who have been performing **award-winning wildlife conservation** work on the frontlines for more than a decade. This experience is unique in that it includes everything that an African safari offers but is also a truly meaningful and valuable experience.

CONTENTS

- OVERVIEW
- CONSERVATION INVOLVEMENT
- ACCOMMODATION
- RATES
- ITINERARIES
- ABOUT WILDLIFE ACT



Overview

This bespoke Conservation Safari is for those who wish to join our professionals on the ground, to participate in and gain an in-depth understanding of what is happening in the field of African wildlife conservation, while simultaneously enjoying the comforts and luxuries that a private game reserve offers.

Conservation Safari activities include:

- Orientation and Conservation Game Drives
 - Participation in a Rhino Dehorning Operation
 - A Camera Trapping Experience
 - Endangered Species Monitoring Sessions
 - Evening sundowners or Dinners to celebrate and discuss the day's activities
-

PLEASE NOTE: activities are adapted to reserve and project requirements at the time and combined with guest interests.



CONSERVATION INVOLVEMENT

Participants in Wildlife ACT's Conservation Safaris will have the privilege of joining active and passionate conservationists in carrying out vital work which forms part of the conservation strategy of our organisation.

This work includes:

- Involvement in the camera trap work, which aligns with the long term **Leopard Survey** of the province.
- **Rhino Conservation** efforts to reduce incentives for poachers to enter protected areas.
- **Endangered Species Monitoring**, which enables management to make informed decisions on crucial conservation actions.





LEOPARD SURVEY

Leopards have been somewhat overlooked from a conservation perspective and recent findings have shown a rapid decline across all of their historic range.

Monitoring has therefore been identified as a key activity in order to better understand this secretive cat.

Camera trapping is one of the most effective ways to monitor Leopards and other elusive, nocturnal species. Wildlife ACT works in partnership with Ezemvelo KZN Wildlife, iSimangaliso Wetland Park and Panthera to carry out an annual provincial Leopard Survey.

The data from camera trap images is used to determine Leopard densities, demographics and population trends at various key sites in KwaZulu-Natal. This information is utilised in provincial and national management planning and decision making. Traditional monitoring techniques, such as direct observation, are somewhat ineffective for Leopards due to their elusive and solitary behaviour, wide home ranges, and ability to move in and out of protected areas.



RHINO DEHORNING

One of the key Rhino Conservation strategies is to dehorn Rhino populations in reserves with smaller populations, which acts as an effective deterrent to poachers. You will participate in the capture operation and witness the team at work over the course of a day. We may have to be flexible on the dates of this work due to weather, so have set it for the first morning to account for this.



ENDANGERED SPECIES MONITORING

Monitoring endangered species is an essential and critical step in their conservation. Wildlife monitoring is essential for keeping track of animal movement patterns, habitat utilisation, population demographics, snaring and poaching incidents and breakouts.

This valuable information, which Wildlife ACT gathers on our various projects, has numerous management applications, including the planning of successful introduction and removal strategies of Africa's wildlife.



ACCOMMODATION



Luxury Conservation Safari



Rhino Sands

 Manyoni Private Game Reserve



Mid - Range Conservation Safari



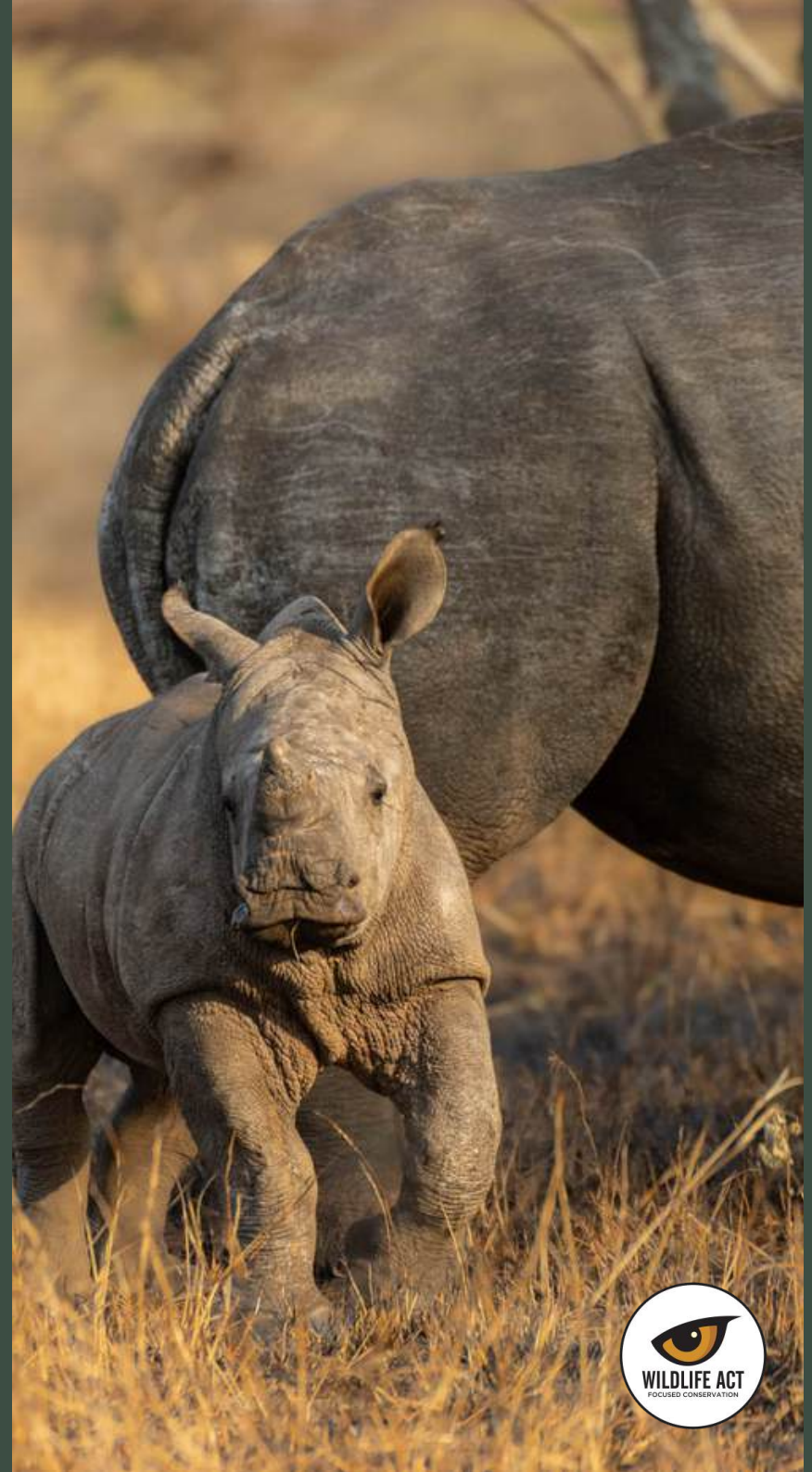
Rhino River Lodge

 Manyoni Private Game Reserve


Manyoni Private Game Reserve

In 2004, 17 private properties in the northern Zululand area dropped their fences forming what is today known as Manyoni Private Game Reserve (formerly Zululand Rhino Reserve). The impetus for forming the reserve was to provide a home to a population of Black Rhinos as part of the WWF Black Rhino Range Expansion Project. The joining of the properties created a 23,000 hectare private game reserve in the heart of Zululand, in one of the most animal-rich and species-diverse areas of South Africa. In addition to Black Rhino, the reserve is now home to all of the Big 5 (Rhino, Elephant, Buffalo, Leopard, Lion) and has seen the re-introduction of two endangered carnivore species, Cheetahs and African Wild Dogs.

Moving from strength to strength, the Zululand Conservation Trust was established in 2011 and has cemented a strong partnership with the local communities through various conservation projects. The Trust also provides the reserve with much-needed support in the fight against wildlife crime. A significant achievement was the proclamation of the reserve as a Nature Reserve under the Protected Areas Act 57 of 2003 (the highest conservation status possible). Manyoni Private Game Reserve is recognised as a site of biodiversity importance and contributes to the provincial conservation targets and endangered species meta-populations. It is one of only a handful of large successful private reserves in Zululand.



RATES

	5 DAY EXPERIENCE	4 DAY EXPERIENCE	3 DAY EXPERIENCE
 Rhino River Lodge	R4600-R6000 pppn (dependent on type of accommodation)	R4600-R6000 pppn (dependent on type of accommodation)	R4600-R6000 pppn (dependent on type of accommodation)
 Rhino Sands	R12 000 pppn	R12 000 pppn	R12 000 pppn
GROUP DONATION	R90 000	R45 000	R 25 000
RHINO DEHORNING EXPERIENCE	Included	R35 000	R35 000

INCLUSIONS & EXCLUSIONS



◆ INCLUDES

- Accommodation
- Teas, Coffees & 3 Meals Daily
- All safari drives and conservation activities as per the itinerary
- Donation to WildlifeACT for associated conservation work

◆ EXCLUDES

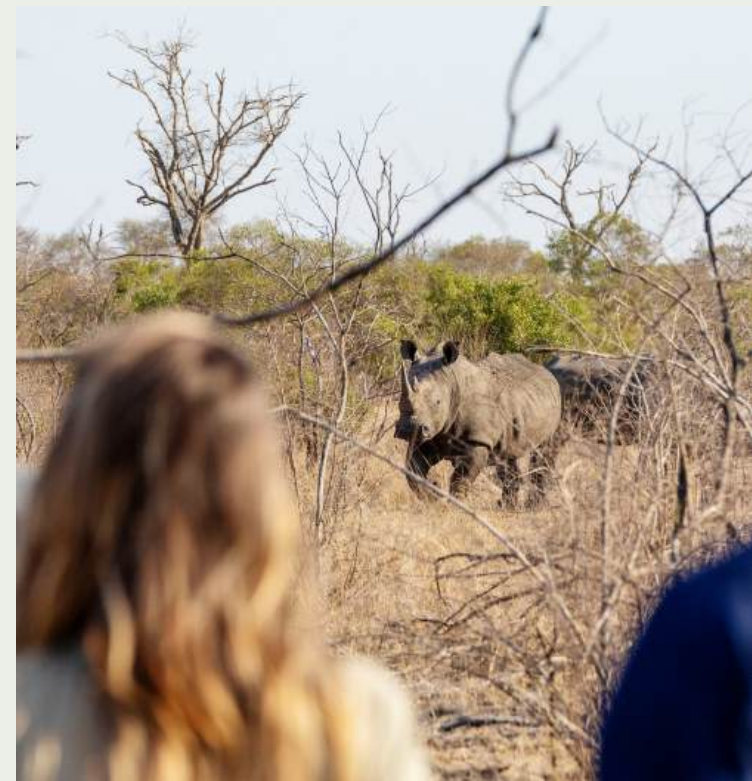
- Flight and transfers
- Premium & Imported Drinks
- Items of a personal nature
- Reserve Conservation Levy

PLEASE NOTE:

- The 4-star accommodation rates vary dependent on accommodation.
- Each Conservation Safari will be comprised of a group of minimum of 2 people, and maximum of 8 people
- All prices are quoted in South African rands due to fluctuating exchange rates.
- All prices are subject to availability at the time of reservation.
- A premium will be added to all groups with less than 4 people.



ITINERARIES



THE 5 DAY CONSERVATION SAFARI EXPERIENCE

DAY 1	MIDDAY AFTERNOON EVENING	Own Transfer to Lodge Orientation and Conservation Game Drives Welcome and Introduction
DAY 2	MORNING AFTERNOON EVENING	Rhino Dehorning Endangered Species Monitoring Session Fireside Discussion: About Wildlife ACT
DAY 3	MORNING AFTERNOON EVENING	Camera Trap Session Endangered Species Monitoring Session Leopard Conservation Discussions over dinner
DAY 4	MORNING AFTERNOON EVENING	Endangered Species Monitoring Session Game Drive and Sundowners in the Bush Final Dinner and Discussion: Community Conservation in Africa
DAY 5	MORNING MIDDAY	Conservation Closure Drive Pack up and Departure

PLEASE NOTE:

Itineraries are liable to change based on weather conditions & animal movements



THE 4 DAY CONSERVATION SAFARI EXPERIENCE

DAY 1	MIDDAY AFTERNOON EVENING	Own Transfer to Lodge Orientation and Conservation Game Drives Welcome and Introduction
DAY 2	MORNING AFTERNOON EVENING	Rhino Dehorning Endangered Species Monitoring Session Fireside Discussion: Wildlife ACT
DAY 3	MORNING AFTERNOON EVENING	Camera Trap Session Endangered Species Monitoring Session and Sundowners in the Bush Leopard Conservation discussion over dinner
DAY 4	MORNING MIDDAY	Conservation Closure Drive Pack up and Departure

PLEASE NOTE:

Itineraries are liable to change based on weather conditions & animal movements



THE 3 DAY CONSERVATION SAFARI EXPERIENCE

DAY 1	MIDDAY AFTERNOON EVENING	Own Transfer to Lodge Orientation and Conservation Game Drives Welcome and Introduction
DAY 2	MORNING AFTERNOON EVENING	Rhino Dehorning Endangered Species Monitoring Session and Sundowners in the Bush Fireside Discussion: About Wildlife ACT
DAY 4	MORNING MIDDAY	Conservation Closure Drive Pack up and Departure

PLEASE NOTE:

Itineraries are liable to change based on weather conditions & animal movements



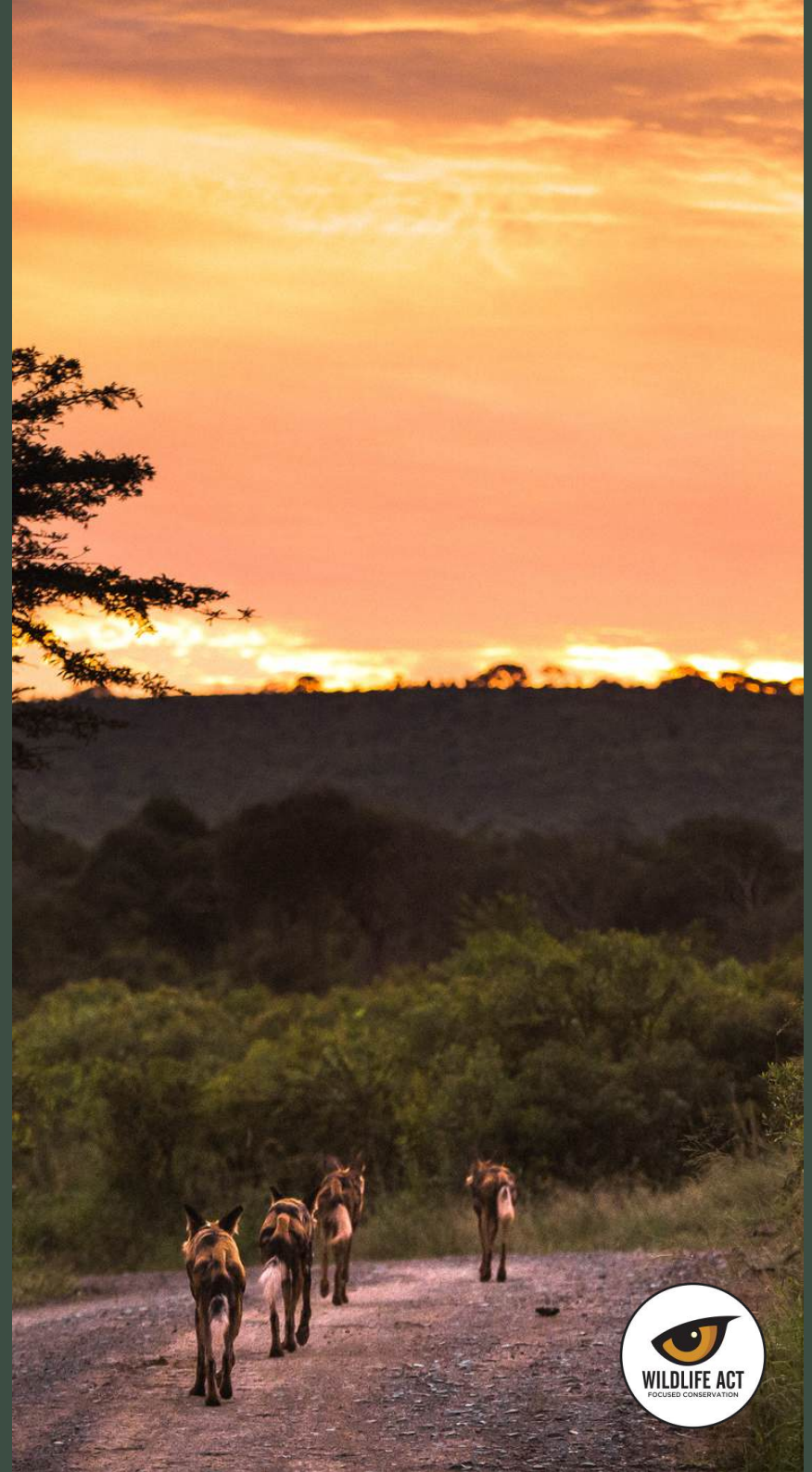
ABOUT WILDLIFE ACT

Wildlife ACT was established in South Africa in 2008 with a vision to save Africa's iconic and endangered species from extinction, thereby enabling broad-scale biodiversity conservation. Through strategic partnerships and sustainable funding models, our mission is to:

1. Implement professional and strategic monitoring and research to enable and inform effective conservation management of wildlife.
2. Identify and develop programmes within surrounding communities to support wildlife conservation.
3. Secure existing protected areas and support range expansion of African wildlife.

Wildlife ACT is pleased to enable their supporters to come and join them in the field and have a meaningful and impactful experience.

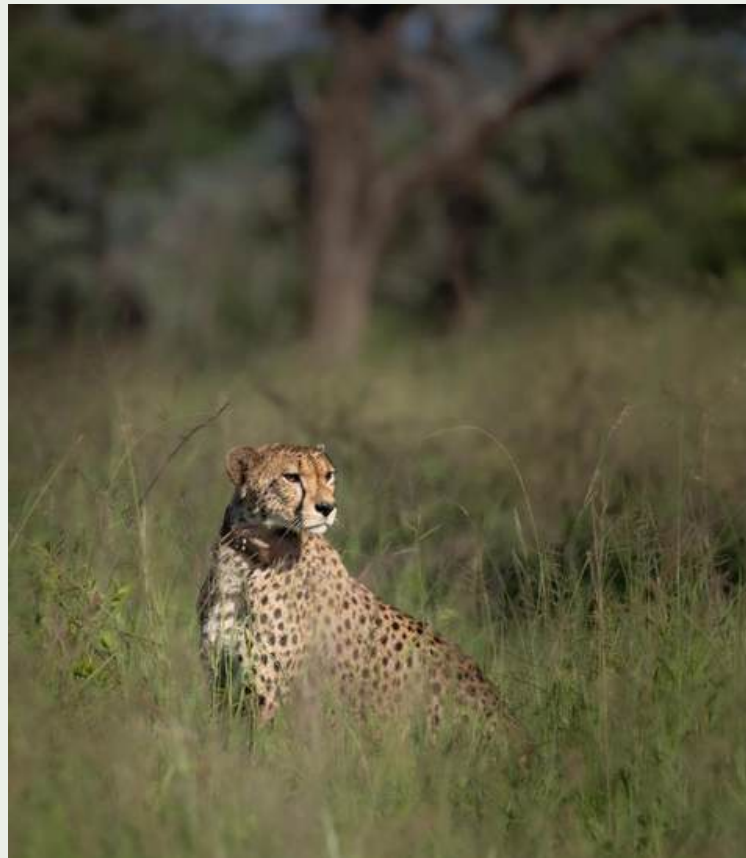
Enquire to join this experience [here](#).



THE WILDLIFE ACT EXPERIENCE



Endangered Species Tracking
and Monitoring.



Saving Endangered Species



Monitoring and Tracking Technology

TERMS AND CONDITIONS

Important Notes

- * Conservation fees are subject to change without notice.
- * Bushwalks distances are based on the fitness levels of the guest.
- * There may be a premium on groups smaller than 4 occupants due to the exclusivity of the activities.
 - * We are unable at this time to offer Conservation Safari's over December.
 - * We take a maximum of 8 people in these blocked dates.

Child Policy

- * Please note that children under the age of 12 years are not allowed on bushwalks.

Deposits

- * A 50% Deposit is required immediately on receipt of an invoice to secure your reservation. Failure to do this will result in bookings being automatically cancelled, unless otherwise arranged with WildlifeACT.
- * Once the booking is confirmed and deposits paid, our standard cancellation policy will apply as per the below stipulated periods.
 - * Balance payment is due 90 days prior to arrival date.
 - * All bookings made within 90 days will require 100% immediate payment to secure.
 - * ALL REFUNDS INCUR A NON-NEGOTIABLE R5000.00 ADMINISTRATION FEE.

Standard Cancellation Policy

- * Cancellations will receive penalties at the following levies as well as incur a non-negotiable R5000.00 administration fee for ANY Refunds:
 - 90+ days prior to arrival = refund all fees less R5,000.00
 - 30-90 days prior to arrival = 50% cancellation fee
 - Less than 30 days before = 100% cancellation fee
- * The accommodation booking's policies, procedures and cancellation policy will be determined by the company you have chosen to stay with.





CONTACT DETAILS

+27 (0)87 802 1231 | info@wildlifeact.com
www.wildlifeact.com