



msg Company Presentation



msg is a business success story with a global presence and a strong focus on insurance.



- Founded in **1980**, headquartered in Ismaning/Munich
- **Second generation of the family:** Founder Hans Zehetmaier; CEO Dr Jürgen Zehetmaier



- **35 locations** worldwide, **3,000 global clients**
- **11,000** employees, **€1.5 billion turnover**
- **Global delivery centres**



- **12 sectors**, core focus on **insurance**
- **Market leader in primary insurance** (DACH) and **reinsurance solutions** (global)



- **No external financing since its foundation** in 1980
- msg has been **consistently ranked in the top 25** of the leading industry rankings **since 1998** – only 5 of the current 25 companies can claim the same

Insurance solutions portfolio

Business Consulting

- Customer Experience
- End-to-end digital processes
- Innovation Management
- Payments
- Sales Management
- Artificial Intelligence (AI)

Products & Solutions

- msg.Insurance Suite as a comprehensive solution for insurers
- Product and Lifecycle Management
- Multi-line portfolio management
- Claims Management
- Cross-functional systems (including Commission, Billing, Partners, etc.)
- AI solutions (including msg.ask:it, msg.claim:it)

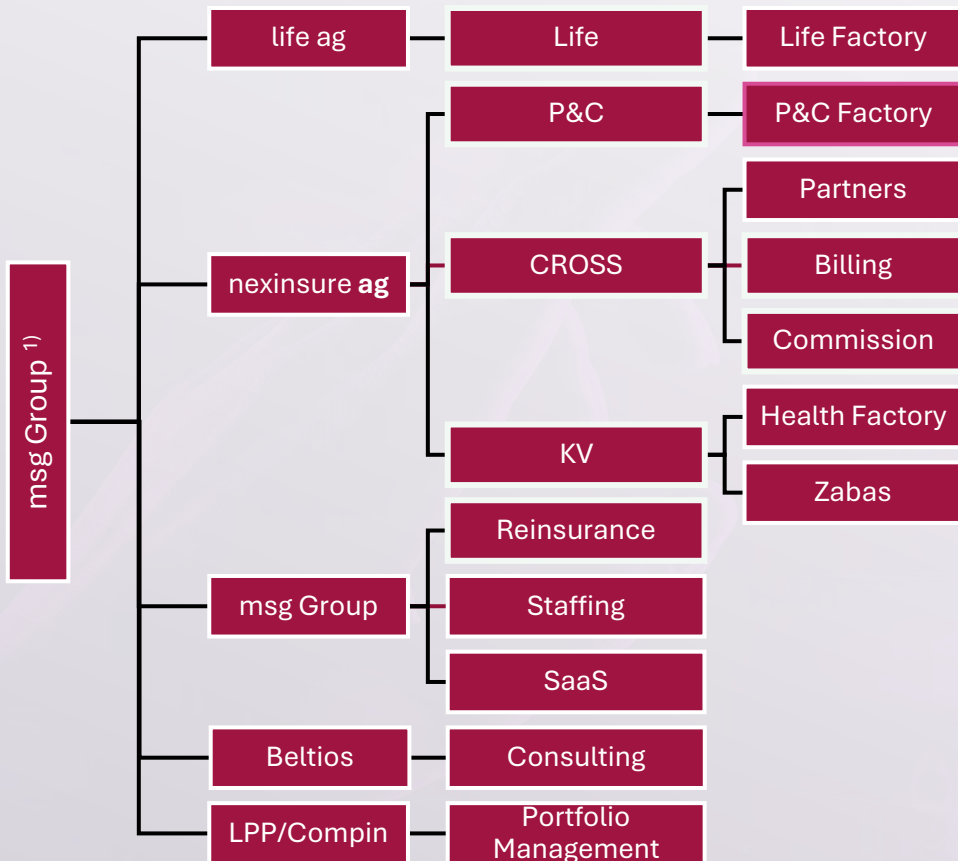
Solution Consulting

- Data migration
- Input Management
- Output Management
- Managed Services
- SAP Consulting for Primary Insurers
- SAP Consulting for Reinsurers
- Custom AI solutions

Cross-Industry

- Business Intelligence & Analytics
- Corporate Performance Management
- Project, Test & Quality Management
- Cloud Centre of Excellence
- Sustainability (ESG) for Insurance

Insurance sector: msg is a corporate success story with a global presence and a strong focus on insurance.



msg is a leading provider of standard software for insurance

- Insurance is a strategic pillar of the msg Group (> 45% of turnover)
- with a track record of over 150 major projects for core insurance solutions, > 4,500 insurance experts, > 60 successful migration projects, > 60 million policies on msg’s core solutions

End-to-end capabilities across the entire value chain

- From strategic consulting through business and IT transformation to core systems, operations and managed services, msg provides integrated coverage of all key functions of a modern insurance organisation.

Broad focus areas – a unified vision

- msg combines core systems & platforms, process and automation excellence (including AI), SAP Insurance solutions, industry-specific consultancy and operational industrialisation into a consistent insurance ecosystem

¹⁾Excerpt from the investment and product structure of the insurance sector

msg.P&C-Factory – the most advanced standard software in the German-speaking world



msg.Insurance Suite P&C

- **The** most advanced and latest **property and casualty platform** on the market
- Development started in 2016, completion in 2026 with fleet solution & co-insurance
- Combines and brings together **all the knowledge and experience gained** from previous P&C core insurance implementations **by the msg Group**
- Consists of **various individual modules** that function both separately and **together as a complete insurance suite** using a best-of-breed approach
- The foundation for success in P&C is a **consistently product-centric solution**
- **A wide variety of installation and operating options are possible** (on-premises, cloud and SaaS)
- Mature and operational **country layers for Germany, Austria and Switzerland**
- **Long-term investment roadmap** and strategic cornerstones of the insurance industry

msg.Insurance Suite P&C – An overview of our three pillars

msg.Insurance Suite



msg.P&C Factory

P&C Sales (TAA)

Quotation management

Sales management
Claims process, FNOL

P&C Portfolio

Policy

Third-party rights,
reporting

P&C Motor
(Motor Insurance Add-On: Retail and Fleet)

Factory Base
(Properties, Framework Agreement, Co-
insurance)

P&C Claims

Claims, Service Providers

Process automation,
AI services

Service Provider
Management

P&C Product (msg.PMQ)

Product Services

Business Rules

Product Server

Pricing &
Calculation

Product Designer

Omni-channel

TAA Client

FNOL client

BiPRO Adapter

Portals

Aggregators

...

Cross-systems

Collection /
Disbursement

Business partner

Commission

Workflow

Text / Print

GDPR