



THE CSA EDGE



Corporate Security Advisors, LLC is a management consulting firm specializing in helping senior executives from Security, Risk, Law, HR and the C-Suite build top-level security programs and teams.

Learn more at: corporatesecurityadvisors.com

OUR PURPOSE

We create strategic value through your security environment – delivering increased trust, stakeholder protection, and business alignment.

We founded Corporate Security Advisors (CSA) with a clear vision: to revolutionize the approach to security programs by combining top-tier expertise with a keen business acumen. Throughout our careers, we've observed that the most effective security initiatives are those that seamlessly align with an organization's goals, culture, and overarching strategy. These programs are invariably led by security professionals who are as adept in the boardroom as they are in the field.

Our mission at CSA is to bridge the gap between security and business. We believe that a well-crafted security strategy should not only protect but also add tangible value to your organization. This means developing detailed security business plans that clearly outline capital and operating expenses, demonstrate return on investment, identify risk mitigation strategies, and define expected outcomes for every security investment.

By partnering with CSA, you're ensuring that your security program is not just an afterthought, but a strategic asset that enhances your overall business performance. We're committed to helping you:

- Implement robust programs that effectively safeguard your most valuable assets - your people
- Develop strategies and plans that align with your business objectives
- Recruit leadership that inspires confidence across all levels of your organization
- Gain a comprehensive understanding of the full potential of your security program

If you're looking to enhance your existing security infrastructure or build a new program from the ground up, whether the scope is a single domestic business unit or an entire global organization, we're excited about the prospect of partnering with you. Together, we can create a security strategy that not only protects but also propels your business forward.

Jeremy & Brad



Jeremy M. Baumann, CPP
Chief Executive Officer
Founder



Brad N. Brekke
Chief Business Officer
Founder

OUR BEGINNINGS

THE ORIGIN OF CSA

Jeremy Baumann and Brad Brekke, CSA's founders, spent decades independently leading, developing, and maintaining security programs for large organizations.

In their corporate roles, both men regularly needed to hire outside vendors to support various security department functions. The good news was the staggering amount of expertise available from an ever-increasing number of third-party providers offering virtually any service they could imagine.

The downside was that most third-party firms were highly specialized, forcing both leaders to hire multiple vendors to address each identified need—one for systems and technology, another for threat assessment, another for business continuity and crisis management, another for travel security, and so on. The overhead and cost of working with so many separate vendors was substantial.

An outside organization that could reliably support all aspects of security with deep strategic expertise simply didn't exist. This realization stuck with both founders, and the idea of resolving it through the creation of a full-service Virtual Security Team™ became a cornerstone of what CSA is today.





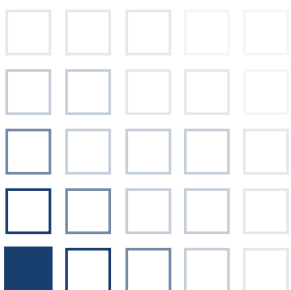
THE BUSINESS OF SECURITY™

WHAT DOES CSA'S TAGLINE, THE BUSINESS OF SECURITY™ MEAN?

You could interpret this as 'CSA is in the business of security,' and while that is accurate, the more important meaning is how CSA assists their clients to develop a business oriented approach, identifying and focusing on needed Security services and enhancements that mitigate risk and also demonstrably contribute to the corporation's business strategy or bottom line, or both.

Executive leaders often think of Security as an operational necessity, like snow removal, landscaping, or food service. These services incur expense but don't necessarily contribute to the organization's business outcomes. From this perspective, every dollar spent on Security is a dollar not available to advance the business goals. Companies therefore often seek base level Security at minimal cost, with no thought of business value and no further investment in the function.

CSA addresses this approach to Security by interacting with senior business leaders, identifying and recommending investment in security mitigation strategies that align with corporate culture and contribute to the companies' overall business goals. In an iterative process, we develop multiple proposal variations with Security leadership and executive officers, seeking to balance the business needs and risk mitigation with a multi-year security business plan that is financially sound and that executive leadership supports.



OUR VALUES

HOW CSA PARTNERS WITH YOU

TRUST

We earn your trust and improve your organization's security environment through reliability, professionalism, honesty and integrity.

EXPERTISE

We share our security expertise to enhance protection of your business and stakeholders and elevate your security organization's strategic value.

TRANSFORMATION

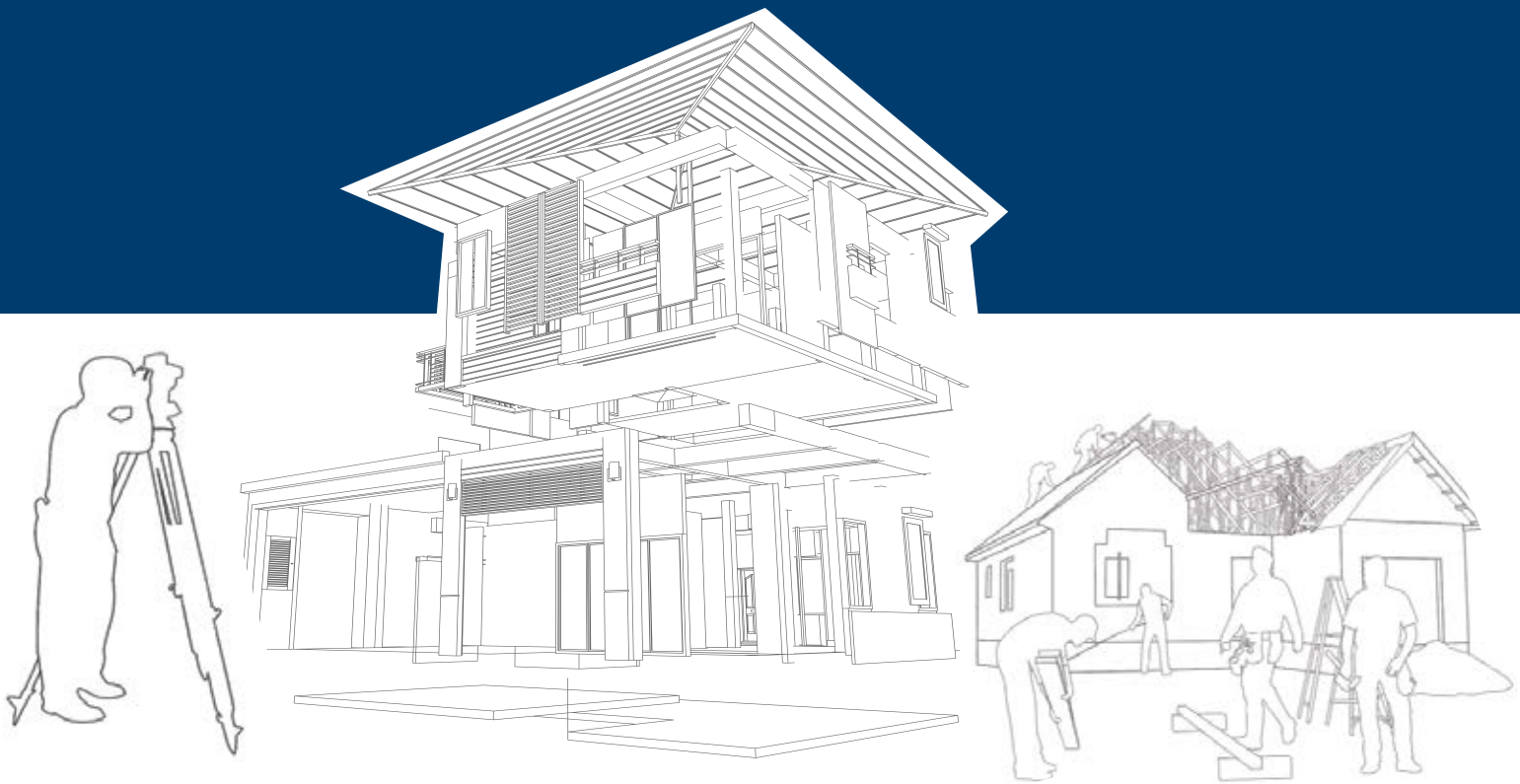
We leverage our years of practical experience and strong commitment to continuous learning to drive transformation of your security capabilities.

PARTNERS

We are true partners, working collaboratively with you and your team to achieve your goals and organizational outcomes.



OUR APPROACH



1 BEFORE YOU START BUILDING

Program Review and Assessment

Like a property survey determines the existing terrain, structures, and boundaries of the lot your building will be constructed on, CSA's Program Review and Assessment appraises security risks, programs, resources, and performance to evaluate strengths and opportunities to map the setting for your security organization.

2 BLUEPRINTS AND SPECIFICATIONS

Strategic Roadmap Development

Next, there's consideration of local regulations, financing, and choosing the right builder for your structure. CSA's Strategic Roadmap determines your security vision, strategy, mission and key milestones which align with the overall organizational strategy. This upfront development is where the construction process really begins.

Business Planning

Blueprints and specifications help bring a construction project to life. CSA creates detailed planning documentation including business cases, long-term financial and budget determinations, organizational design, implementation plans and timelines—all blueprints for your security organization's design.

3 THE CONSTRUCTION PHASE

Recruiting and Coaching

Hiring skilled and experienced tradesmen that will build to the specifications is crucial. We present the best security leaders to an organization and its executives to help them understand the caliber of individuals they expect to run and build a strong foundation for a security program.

Program Implementation

After the rough framing is complete, the work shifts to the finishing touches. CSA builds optimized corporate security programs that maximize business value, enhance your organizational efficiency and effectiveness, meet duty of care obligations, and comply with relevant regulations. We offer tiered implementation specific support tailored to your needs, ranging from interim Chief Security Officer to a full Virtual Security Team™.

Documentation

We create detailed specifications, policies and procedures, so the team is built in a way that makes sense for your organization.

SECURITY MATURITY MODEL

We use an established baseline and security organizational model as a framework to measure security maturity.

A security organizational maturity model assesses and guides an organization's security capabilities and practices. It consists of five levels, each representing a different level of maturity in security practices. These stages range from reactive approaches to optimized strategic security management. The model helps to evaluate your current security posture, identify areas for improvement, and establish a roadmap for advancing to a higher maturity level.

MOST
MATURE



OPTIMIZED LEVEL 5

- Security program is fully integrated into the business at all levels
- Security is fully aligned with organization culture and business goals
- Program is capable of positively impacting organization's financial, operational, or reputational performance

MEASURED LEVEL 4

- Security metrics are regularly reviewed by governance structure
- Performance feedback is incorporated into planning cycle
- Budget requests and resources are aligned to normalized security risk data

DOCUMENTED LEVEL 3

- Security strategy, plans, policies, budgets, and programs are memorialized
- Security governance is integrated into the business
- Data driven approach to security mitigation strategies

MANAGED LEVEL 2

- Defined security organization and roles
- Security actions within specific programs are predictable
- Business has a reliance on Security

REACTIONARY LEVEL 1

- Security program or function doesn't exist or is new
- Security responses driven by incidents or events
- No defined security planning process or cycle

LEAST
MATURE

COMMON SECURITY INITIATIVES IN MATURE ORGANIZATIONS

PROGRAMS

- Event Security
- Security Awareness & Education
- Executive Security
- Workplace Violence Mitigation
- Information Security (Non-Cyber)
- Third Party Vendor Security
- Supply Chain Security
- Liaison with Law Enforcement and Fire
- Security Training

SECURITY OPERATIONS CENTER (SOC)

- Global Event Monitoring
- Reputation Monitoring
- Intelligence Collection & Analysis
- Intelligence Dissemination
- Travel Security
- Travel Medical
- Emergency Notification Systems
- Emergency Communications

PROTECTIVE FUNCTIONS

- Security Force Management
- Medical Staff
- Mail Screening
- Data Center Security
- Perimeter Security
- Key Management
- Visitor Management
- Loss Prevention
- Emergency Response

INVESTIGATIONS & AUDITS

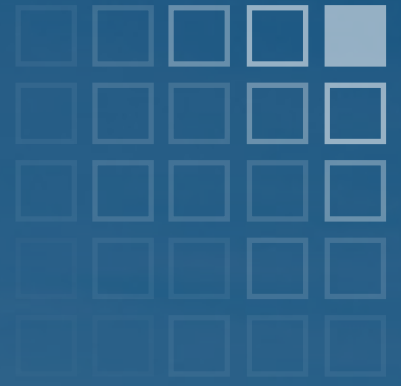
- External Fraud Investigations
- Background Screening
- Incident Reporting
- Threat Assessment
- Security Audits
- Internal Investigations
- Insider Threat

RESILIENCY

- Crisis Management
- Business Continuity
- Crisis Communication
- Emergency Preparedness
- Kidnap Response
- Business Impact Assessment
- Risk Registry
- Risk Assessment
- Metrics & Analytics

TECHNOLOGY

- Access Control Systems
- Video Monitoring
- Intrusion Detection System
- Panic Alarms
- Fire and Life Safety System
- License Plate Recognition
- Weapons Detection
- Technical Surveillance Countermeasures



OUR SERVICES



THE BUSINESS OF SECURITY™

PROGRAM REVIEW

Customized assessment of current security risks, programs, resources, and performance to evaluate strengths and opportunities.

A CSA Program Review is a customized examination of current security risks, programs, resources, and performance to assess department and organizational strengths and opportunities.

A Program Review includes:

- Analysis of existing people, process, and technology
- Assessment of the current risks
- Development of detailed, prioritized recommendations

CSA gathers a clear picture of the organization's security needs and the factors most important to the company's executive leaders through detailed analysis of the client's current state and interviews within Security, of coordinating departments, and of C-Suite officers.

CSA's assessment can identify potential risks, areas for improvement, and possibilities for consolidation and centralization if appropriate.

What is the end product?

Analysis and assessment are combined into a deliverable with recommendations, aligned with the company's culture, mission and corporate goals. The final deliverable provides:

- A clear understanding of the current state of the security function and organization
- A risk profile specific to the organization
- Prioritized recommendations for short-term and long-term enhancements that contribute to the company objectives and organizational culture

Providing a wider field of vision

CSA's focus isn't on a single issue; it is on the entire organization's security concerns, and on determining and communicating how to address those concerns in a manner that supports the overall organizational mission, vision, and goals.

We focus on programs that protect people, assets, reputation, and the business, while driving bottom-line material value for the organization.



STRATEGIC ROADMAP

Security visions, strategies, missions, and key milestones to align with organizational strategy.

The CSA Strategic Roadmap is a detailed, actionable plan defining a Security Department's vision, mission, and strategy, and how these align with the overall organizational strategy and business goals. The Roadmap also determines the key milestones, resources including financial planning, and timeframes required to achieve the objectives defined in the Security Department strategy.

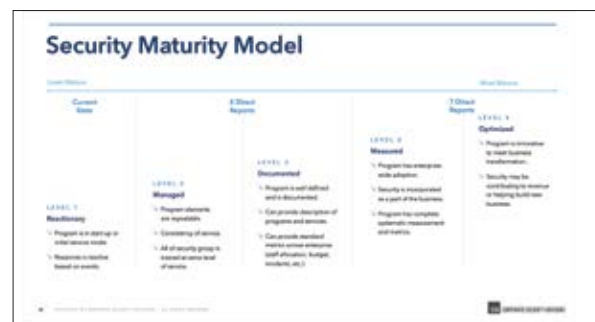
The completed Strategic Roadmap enables the Security Department to present a multi-year business plan to senior leadership for approval and funding. The Roadmap provides a comprehensive and integrated plan for all aspects of the Security department, from organizational design, to technology and systems, to necessary skills and talent.

CSA Security Strategy Components

The Strategy Design outlines the desired future-state vision, mission, objectives, and initiatives. Strategy design focuses on People, Process, and Technology to support a cost efficient, scalable, and sustainable Security organization. The Governance Framework establishes the strategic direction, defines the drivers which determine the governance requirements, and determines the roles, responsibilities, authorities, and decision making flow at the enterprise and business unit levels.

Why do I need a Strategic Roadmap?

Determining how to realize the desired improvements to your corporation's security isn't a simple undertaking. You often can't get the necessary support or identify the resources required without a comprehensive, organizationally focused plan. To reach your goal, it is often best to have a guide who can determine and explain the costs involved; the governance, time, and resource requirements; and the pitfalls along the way to your goal.



BUSINESS PLANNING

Creation of detailed planning documentation including business cases, long-term financials, organizational design, implementation plans and timelines.

A CSA Business Plan is a document that captures the results of a comprehensive budget planning process and outlines the corporate investments required to effectively mitigate security risks.

A business plan is often the next step following completion of a CSA Strategic Roadmap.

CSA works with internal corporate stakeholders as well as external vendors to develop a long-term business plan that aligns security investments with the overall business strategy and culture. The business plan summarizes total investments to allow leaders to make informed decisions with the full mitigation strategy in mind.

The business plan is refined through multiple presentations until executive leadership has a comprehensive budget they can support, and Security has a long-term guidance document for their project.

CSA Business Planning Components

CSA Business Plan development includes:

- Operating expense and capital expense estimates for specific components
- Return on security investment
- Cost avoidance
- Risk mitigation estimates
- Other supporting data relevant to each investment element

Why do I need a Business Plan?

A detailed Business Plan gives executive leadership a clear and compelling picture of the benefits and costs for their Security investment. We want clients to invest appropriately in solutions that mitigate risk, and avoid solutions that may be less effective at true risk mitigation.

When you hire CSA, you are buying an approved budget plan that's right for your organization, rather than a single report with no follow-thru.

CSA CORPORATE SECURITY ADVISORS	
Security Business Plan 2023	
EXECUTIVE SUMMARY	3
SECURITY ORGANIZATION REVIEW	4
SECURITY SYSTEMS AND TECHNOLOGY	4
PROGRAMS	9
Threat Management Program	9
Background Investigations Program	13
Control Monitoring Program	16
Intelligence Program	17
Communication, Education, and Awareness Program	20
Law Enforcement Engagement Program	23
Travel Security Program	24
APPENDIX A	26

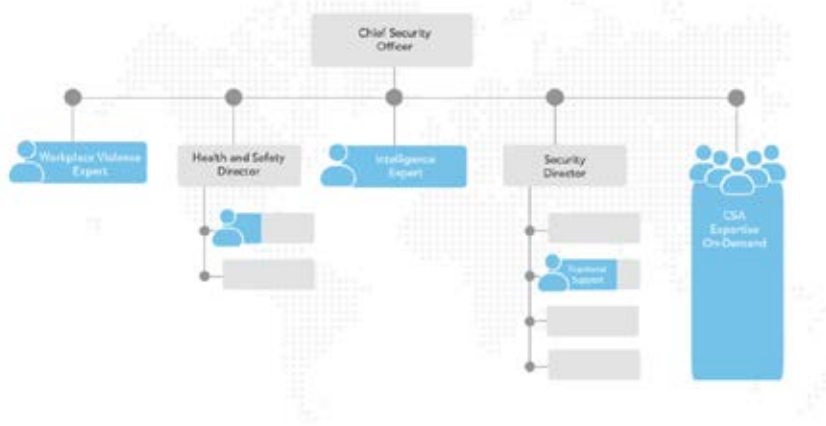
APPENDIX A					
Total Incremental OpEx Cost					
	FY25	FY26	FY27	FY28	FY29
Total	\$384,250	\$545,000	\$364,000	\$347,000	\$368,000
Total Incremental Hours Per Week					
	FY25	FY26	FY27	FY28	FY29
Total	280	320	320	320	320
Total Incremental OpEx by Program					
	FY25	FY26	FY27	FY28	FY29
Organizational Design	\$0	\$40,000	\$0	\$0	\$0
Security Systems & Technology	\$0	\$40,000	\$0	\$0	\$0
Threat Management	\$19,350	\$21,000	\$21,000	\$21,000	\$24,000
Background	\$344,300	\$290,000	\$290,000	\$290,000	\$290,000
Investigations	\$0	\$30,000	\$30,000	\$30,000	\$30,000
Intelligence	\$0	\$25,000	\$10,000	\$10,000	\$10,000
Communication & Awareness	\$0	\$25,000	\$0	\$0	\$0
Law Enforcement Engagement	\$0	\$20,000	\$0	\$0	\$0
Travel Security	\$0	\$14,000	\$14,000	\$14,000	\$14,000
Total	\$384,250	\$545,000	\$364,000	\$347,000	\$368,000
Total Incremental Hours Per Week by Program					
	FY25	FY26	FY27	FY28	FY29
Threat Management	20	40	40	40	40
Background	80	80	80	80	80
Investigations	120	120	140	140	140
Intelligence	20	40	40	40	40
Total	240	280	320	320	320
CSA CORPORATE SECURITY ADVISORS					
					Page 26

VIRTUAL SECURITY TEAM™

Immediate and exceptional support to assist in all aspects of security on a full-time, project, or fractional basis.

Engaging CSA in a Virtual Security Team™ (VST) partnership is a highly effective method of supporting a maturing Security Program. CSA provides exceptional talent and immediate support to assist in all aspects of security on a full-time, project, or fractional basis.

VST partnerships are flexible and customizable, offering not only role-specific support, but the backing of a diverse team of experienced Security professionals. Our entire team remains a resource that can be consulted during the length of the engagement, or engaged to provide project specific needs.



Fractional Support

Support provided by CSA's Fractional Security Team™ involves experienced Security leaders working on a pre-determined basis, contributing their expertise, strategic direction, and guidance without the long-term commitment a full-time position brings.

Fractional support can be compared to the leasing of a vacation home - you may not wish to purchase and maintain a second home. Similarly, your organization may not wish to commit the resources for certain positions. The Fractional Security Team™ solves that problem.

HOW CAN A VST PARTNERSHIP SUPPORT MY ORGANIZATION?

Client organizations use CSA's Virtual Security Team™ capability to:

- Lead Global Security Organizations with Fractional CSO support (Fractional Security Team™)
- Provide immediate interim expertise in specialty areas of Security
- Staff Security organizations at a lower cost than a full time team
- Showcase high caliber talent to help reset Management expectations
- Conduct an annual independent Security Maturity Assessment
- Promote a client's open Security positions to the CSA Network

EXECUTIVE SECURITY

Comprehensive assessments for unmatched security for your organization's top leaders.

In today's complex threat environment, ensuring the safety and readiness of your executive team is vital to organizational resilience and success. We deliver customized executive security services and expert assessments to safeguard your organization's most essential leaders.

What Is Executive Security?

Executive Security encompasses tailored strategies to protect high-profile leaders from physical, digital, and reputational risks. This includes detailed risk assessments, secure travel planning, residential security evaluations, and ongoing monitoring of emerging threats. At CSA, we draw upon our depth of experience and expertise to mitigate risks in all facets of an executive's professional and personal environments.



WHAT WE DELIVER

Executive Risk Assessment (ERA)

A comprehensive evaluation of the risks and threats faced by an organization's key executives, both personally and professionally. The assessment examines physical security vulnerabilities, cyber risks, travel safety, and social media exposure. Its goal is to identify potential threats and recommend tailored protective measures to safeguard executives and their families, ensuring the continuity of business operations and personal well-being.

IRS 132 Compliant Independent Security Study (ISS)

A security analysis assessing the adequacy of protective measures for executives. This study aligns with IRS guidelines under Section 132, which governs the non-taxable treatment of certain fringe benefits, including security services provided for bona fide business reasons. The ISS documents the necessity of security programs, ensuring compliance with IRS regulations while justifying the associated costs as business expenses.

Executive Security Program Review (ESPR)

A systematic examination of an organization's existing executive security program to evaluate its effectiveness, alignment with industry best practices, and ability to address current threats. The review covers policies, procedures, technologies, and personnel, providing actionable recommendations to enhance the program's robustness and adaptability to evolving risks, ensuring the safety of executives and their operations.

EXECUTIVE RECRUITING

Identifying, securing and onboarding exceptional leaders to drive your security strategy.

We present the best security leaders to an organization and its executives to help them understand the caliber of individuals they expect to run their operation.

CSA's Executive Recruiting Approach

Position Evaluation

We work with our clients to evaluate the requirements for each role, starting with a client-provided position profile describing the duties, qualifications, and experience necessary for the position.

CSA uses the profile to initiate the process of identifying candidates, including those known to CSA or to the client, and candidates for similar positions with the client's competitors or vendors.

Candidate Pre-Screening Evaluations

After the identification process, CSA conducts candidate evaluations, which include professional/technical qualifications, job-related interests, compensation packages and objectives, and an assessment of the candidate's cultural fit and overall suitability.

Candidate Selection and Presentation

Candidates who express interest in the position and meet the profile criteria are then introduced to the client. CSA provides written summaries or resumes on each candidate to be interviewed, coordinates timely interviews with appropriate client representatives, and provides references at the client's request.

Offer and Acceptance

Following the completion of all interviews, CSA provides counsel to help the client select the best candidate. CSA also assists the selected candidate with long-term professional growth advice, and other reasonable services as required.

CSA ONBOARDING AND LEADERSHIP ASSESSMENT COMPONENTS

We provide comprehensive onboarding support and leadership assessment services to ensure a seamless transition and sustained success for new and existing leaders.

Our onboarding support focuses on integrating executives into their roles effectively, aligning them with organizational goals, and equipping them with the tools and resources needed to thrive.

Through detailed assessment, we evaluate leadership capabilities, identify development opportunities, and design tailored strategies to enhance performance, drive growth, and foster alignment with the company's culture and vision.

PROGRAM IMPLEMENTATION

Tiered implementation specific support tailored to your security needs, ranging from interim Chief Security Officer to a full Virtual Security Team™.

CSA builds optimized corporate security programs that maximize business value, enhance your organizational efficiency and effectiveness, meet duty of care obligations, and comply with relevant regulations. We offer tiered implementation specific support tailored to your needs.

CSA Program Implementation helps convert disparate, siloed programs into an enterprise-level program for consistency and governance. It provides defensible decision-making within the same parameters across the organization.

Program Implementation can also involve:

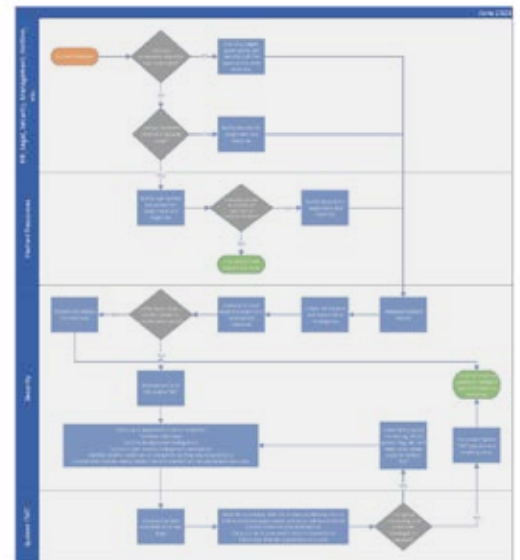
- Designing appropriate program governance
- Building a new program framework
- Developing documentation
- Establishing best practices
- Identifying program-specific talent and skills
- Integrating third-party solutions

Integration with Enterprise Functions

Security initiatives should integrate with overall enterprise learning, development, and communication functions. Program implementation can consolidate disjointed, disparate programs into one enterprise level security program, providing defensible decision making that's consistent and within the same parameters and frameworks across an organization.

Why should I use CSA for Program Implementation?

CSA's program implementation experts can address building new security programs from scratch, redefining/maturing existing programs, or consolidating siloed programs into an enterprise-level approach. It ensures consistency, defensible decision-making, and integration with overall enterprise initiatives, including learning, development, and communication functions.



EXECUTIVE COACHING

Tailored executive coaching and advisory services to assess and develop leadership capabilities, ensuring strategic growth and alignment with organizational goals.

Coaching security leaders is essential to navigating today's rapidly evolving business landscape and ensuring the success of an organization's security strategy. By enhancing executive presence, business acumen, leadership skills, decision-making, and strategic thinking, coaching empowers security leaders to address complex challenges with confidence and agility. It also helps align security priorities with broader business goals, fostering collaboration and resilience.

CSA Executive Coaching

CSA's Executive Coaching and advisory services can be applied to both new and existing leadership. The service includes assessment of personnel, followed by regular mentorship meetings focused on long-term professional growth advice including:

- Leadership development
- Negotiation and internal selling
- Strategic planning
- Executive presence
- Business acumen
- Effective prioritization
- Industry or sector transition



DOCUMENTATION SUPPORT

Technical writing and editing support for all aspects of process documentation, policies, procedures, and job aides.

Changes to a Security program require accurate, compelling, concise, and well-targeted documentation, whether it is intended for Security personnel, company executives, the general public, or all of the above.

Your organization needs clear Policies, Standard Operating Procedures and Work Instructions, customized to match your requirements, to guarantee that new program directions are universally understood and consistently executed. Handouts, reports and other public-facing presentations and documents ensure that new Security postures are communicated to company employees and the community at large.

To help ensure integrity within your document control system, we also design in version control tracking, effective date of release for new versions, and revision history table including revision date, overview of changes, and approving signature blocks.

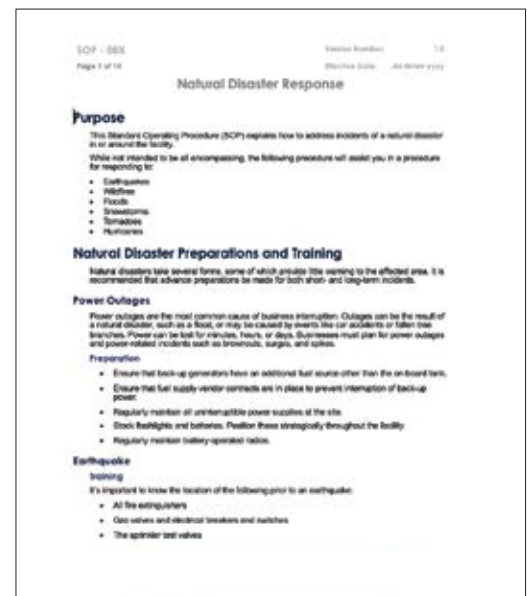
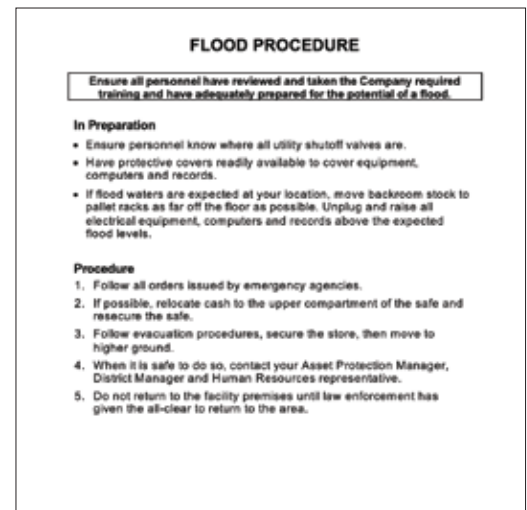
Documentation We Deliver

Documentation Support Services include, but are not limited to, writing and publishing the following:

- Security Policies, Procedures and Work Instructions
- Response plans
- Training materials
- Operating manuals
- Job aides

CSA Technical Writing Expertise

Our documentation support services are staffed by a technical writing team that's accustomed to researching, supporting, and writing documentation to support a wide array of security initiatives. Our team will work with your subject matter experts, business leaders, and Security staff to identify and prioritize your documentation needs. We'll ask the right questions, get clarity on what your exact requirements are, and produce a quality finished product that speaks to the right audience.





OUR TEAM

OUR EXPERIENCE

CSA is comprised exclusively of top professionals who have built world-class security programs.

At Corporate Security Advisors, we bring an unparalleled depth of experience, combining expertise from both the public and private sectors. Our team of seasoned professionals has been instrumental in developing robust security programs for a wide array of industries.

Our advisors have previously served in leadership roles at esteemed Fortune 500 companies, leading healthcare providers, Government agencies, major financial institutions and technology organizations such as:



All product and company names are trademarks™ or registered® trademarks of their respective holders.

HOW OUR EXPERIENCE HELPS OUR CLIENTS

Our extensive experience enables us to offer tailored security solutions that are both strategic and practical. By leveraging our deep industry knowledge and proven methodologies, we help our clients navigate complex security challenges, ensuring their assets are protected and their operations remain resilient.

CSA staff members have an average of 30+ years of strategic security experience. Our many areas of expertise include Security Assessment, Strategic Roadmap development, Risk and Risk Tolerance determination, Program Review, Governance, Business Planning, Executive Recruiting and Coaching, Crisis Management and Business Continuity Program Development, Security Policies and Procedures, and Program Implementation.



JEREMY BAUMANN

Chief Executive Officer
Founder

Chicago, IL

EXPERIENCE

- Over 30 years experience
- Management Consultant
- Health Partners, Interim CSO
- Discover Financial Services, Director, Enterprise Security
- Takeda Pharmaceuticals, Business Resilience and Security, Supply Chain Security and Investigations
- Local Law Enforcement

AREAS OF EXPERTISE

- Corporate Security Strategy and Business Planning
- Brand Protection Technologies
- Crisis Management
- Business Continuity
- Supply Chain Security
- Travel Security

INDUSTRIES

- Financial
- Technology
- Pharmaceutical
- Healthcare
- Law Enforcement



BRAD BREKKE

Chief Business Officer
Founder

Minneapolis, MN

EXPERIENCE

- Over 35 years experience
- Management Consultant
- Target, CSO
- Mayo Clinic, Interim CSO
- FBI, Sr Executive, Director's Office, Special Agent
- Attorney

AREAS OF EXPERTISE

- Corporate Security Strategy and Business Planning
- Risk Assessments and Mitigation
- Strategic Partnerships

INDUSTRIES

- Retail
- Financial
- Healthcare
- Technology
- Aviation
- Federal Law Enforcement



DAVID FLYNN

Chief Administrative Officer
Partner

Chicago, IL

EXPERIENCE

- Over 20 years experience
- Management Consultant
- Glencoe Regional Health, Interim CSO
- Hillard Heintze/Jensen Hughes, Sr. Director Threat Management Consulting
- Discover Financial Services, Sr. Manager Investigations
- Bank of America, SVP, Due Diligence Investigations
- LaSalle Bank/ABN AMRO, Retail Banking Operations

AREAS OF EXPERTISE

- Threat Violence
- Risk Management and Assessment
- Workplace Violence Prevention
- Internal and Background Investigations
- Enterprise Security
- Open Source Intelligence
- KYC Compliance

INDUSTRIES

- Financial
- Technology
- Manufacturing
- Logistics
- Pharmaceutical
- Automotive
- Healthcare



KEN SENSER

Chief Strategy Officer

Partner

Dallas, TX

EXPERIENCE

- Over 40 years experience
- Management Consultant
- Texas Health, Interim CSO
- Walmart, SVP and CSO
- FBI, Assistant Director, Security Division
- CIA

AREAS OF EXPERTISE

- Global Security and Governance
- Crisis Management
- Threat Management
- Incident Response
- Travel Security
- Business Continuity

INDUSTRIES

- Retail
- Financial
- Healthcare
- Aviation
- Federal Law Enforcement



DAVE KOMENDAT

Chief Security Officer

Partner

Seattle, WA

EXPERIENCE

- Over 35 years experience
- Risk Management Consultant
- The Boeing Company, VP and CSO
- Department of Homeland Security, Private Sector Leader for the Critical Manufacturing Sector
- Hostage US Board of Directors, President

AREAS OF EXPERTISE

- Executive Protection
- Supply Chain Management
- Aviation Security and Protection
- Strategic Intelligence
- International Security
- Business Continuity
- Crisis Management
- Risk Management Assessment
- Merger and Acquisition Security

INDUSTRIES

- Technology
- Aviation
- Federal Law Enforcement



JAMES MURPHY

Chief Operations Officer

Partner

Philadelphia, PA

EXPERIENCE

- Over 40 years experience
- Management Consulting
- Pacific Gas and Electric Company, Sr Director Corporate Security
- Kimberly-Clark, VP Global Security
- Lexmark International, Director Global Security
- Scholastic, Director Corporate Security
- Merck, Director of Security
- Motion Picture Association, Supervisor of Investigations
- FBI, Special Agent

AREAS OF EXPERTISE

- Cybersecurity
- Risk Management
- Investigations
- Physical Security
- Executive Protection
- Workplace Violence Prevention
- Enterprise and Brand Protection
- Crisis and Emergency Management
- Supply Chain Security

INDUSTRIES

- Pharmaceuticals
- Public utilities
- Government
- Consumer Products



LEADERSHIP



BETHANY HIITOLA

Chief Marketing Officer

Partner

Milwaukee, WI

EXPERIENCE

- Over 25 years of experience
- CommScope, Global Director of Marketing
- ARRIS, Global Marketing Director
- Motorola, Global Marketing, Consumer Education Manager, Sr Content Developer
- CGI, Management Consulting

AREAS OF EXPERTISE

- Strategic Marketing and Brand Positioning
- Change Management
- Organizational Transformation
- Corporate Communications
- Crisis Messaging
- Global Data Protection and Compliance
- Enterprise-Wide Digital Strategy

INDUSTRIES

- Telecommunication
- Technology
- Media



JOHN LENKART

Chief Information Security Officer

Washington DC

EXPERIENCE

- Over 30 years experience
- Management Consulting
- Cybercrime prevention software company, Founder
- Homeland Protection at the Applied Physics Lab, Johns Hopkins University, Fellow
- Cyber Team Six, Chief Strategy Officer, Managing Partner
- FBI, Senior Executive Service, Counter Intelligence

AREAS OF EXPERTISE

- Risk Management and Assessment
- Supply Chain
- Infrastructure
- Counterintelligence
- Cybercrime

INDUSTRIES

- Education
- Military
- Government
- Law Enforcement

MANAGING DIRECTORS



STEVAN BERNARD

Managing Director

Los Angeles, CA

EXPERIENCE

- Over 40 years of experience
- Sony Pictures Entertainment - Executive VP for Global Protection Services
- Confederations Cup and the FIFA World Cup in Brazil - Global Protection Services
- Metro One - Advisory Board
- 3Com - Director Security, Environment, Health and Safety
- U.S. Department of Energy (DOE) - National Defense Executive Reserve

AREAS OF EXPERTISE

- ACybersecurity
- Global protection services
- Business Continuity Planning
- Crisis Management
- Incident response
- Investigations and forensics
- Threat management
- Information security and data privacy
- Physical security
- Production safety and security
- Environmental, health and safety
- Fire and life safety
- Risk mitigation

INDUSTRIES

- Federal Government
- Law enforcement
- Entertainment
- Energy
- Food and Beverage
- Human resources
- Technology



MANAGING DIRECTORS



RICH DAVIS

Managing Director

Chicago, IL

EXPERIENCE

- Over 35 years of experience
- United Airlines, CSO
- Member of U.S. Department of State Leadership Board – OSAC
- Member of FBI Executive Board – DSAC
- Board of Director - ISMA
- Board of Director – DSP (FBI/DHS)
- FBI Domestic Security Executive Academy (FBI), 2007

AREAS OF EXPERTISE

- Aviation Security
- Travel Security
- Executive Protection
- International Security

INDUSTRIES

- Aviation
- Government
- Federal Law Enforcement
- Public and Private Sector



TED HOGAN

Managing Director

Minneapolis, MN

EXPERIENCE

- Over 25 years of experience
- Hogan & Associates, Partner
- Target, Talent Acquisition Leader
- Tim Richards and Associates, Recruiter, Vice President

AREAS OF EXPERTISE

- Executive Recruiting
- Senior Leadership
- Strategy and Transformation
- Supply Chain and Operations
- Human Resources
- Diversity & Inclusion

INDUSTRIES

- Finance
- Retail
- Food and Beverage
- Healthcare
- Technology
- Sports
- Public, Private, Private Equity
- Media



PAUL McCABE, MBA

Managing Director

Minneapolis, MN

EXPERIENCE

- Over 38 years experience
- Security Consulting
- Target, Sr Director of Global Corporate Security
- FBI, Supervisory Special Agent
- The Aspen Institute Homeland Security Group, Member
- Africa Mission Field, Global Security Advisor

AREAS OF EXPERTISE

- Physical Security and Safety
- Investigations
- Risk Mitigation and Management
- Threat Assessment
- Workplace Violence Prevention
- Crisis Management
- Business Continuity and Resiliency
- Executive Protection
- Travel Security
- Event Security

INDUSTRIES

- Non-profit
- Retail
- Federal Law Enforcement



MANAGING DIRECTORS



JANICE McCARTY

Managing Director

Seattle, WA

EXPERIENCE

- Over 20 years of experience
- SLS Advisors - President
- PHC Global - Vice President, Corporate Security & Intelligence,
- Starbucks - Director, Strategy of Global Security & Resilience
- U.S. Air Force Veteran

AREAS OF EXPERTISE

- Risk Management
- Biosecurity Intelligence
- Physical Security
- Asset Management
- Crisis Response
- Business Resiliency
- Executive Protection

INDUSTRIES

- Pharmaceutical
- Food and Beverage
- Retail



BOB McNANEY

Managing Director

Minneapolis, MN

EXPERIENCE

- Over 30 years experience
- The McNaney Group, Founder & CEO
- Padilla: Public Relations, Marketing and Communications, SVP
- Hubbard Broadcasting, National Emmy Award-winning investigative journalist
- KLAS TV, Reporter / Anchor

AREAS OF EXPERTISE

- Crisis Management and Communication
- Crisis Preparedness
- Reputation Management

INDUSTRIES

- Media
- Healthcare
- Higher education
- Financial
- Retail



ROBERT POCICA

Managing Director

Detroit, MI

EXPERIENCE

- Over 40 years of experience
- Management Consultant
- McKesson, SVP and CSO
- Pfizer Inc, Sr Director, Global Security
- FBI, Supervisory Special Agent
- Travel Research Advisors (TRA), Strategic Advisor and Board Member
- Groupdolists, Security Advisory Council Member

AREAS OF EXPERTISE

- Crisis Management
- Investigations
- Risk Management
- Supply Chain Security
- Emergency Management
- Threat Intelligence
- Cyber Security

INDUSTRIES

- Aviation
- Pharmaceutical
- Government
- Federal Law Enforcement



MANAGING DIRECTORS



STEVEN RICCIARDI

Managing Director
Boston, MA

EXPERIENCE

- Over 30 years experience
- Security Consulting
- Medtronic, Sr Director of Global Security
- Covidien, Chief Security Officer
- United States Secret Service, Special Agent in Charge
- Principal Federal Official, DHS, 2004 Democratic National Convention
- Federal Coordinator, DHS, 2013 Boston 4th of July Celebration

AREAS OF EXPERTISE

- Executive Security
- Investigations
- Event Security
- Risk Mitigation
- Crisis Management
- Global Security Strategies

INDUSTRIES

- Medical
- Government
- Law Enforcement



BRYAN STRAWSER

Managing Director
Minneapolis, MN

EXPERIENCE

- Over 30 years of experience
- Bryghtpath, Principal and CEO
- Auburn University, Center for Cyber & Homeland Security, Senior Fellow
- University of Phoenix, Interim Chief Security Officer
- Target, Global Crisis Management, Business Continuity and Intelligence

AREAS OF EXPERTISE

- Business Continuity
- Business Continuity as a Service
- Crisis Communication
- Crisis Management
- Emergency Planning and Exercises
- IT Disaster Recovery
- Resiliency Diagnosis

INDUSTRIES

- Education
- Finance
- Government and Public Sector
- Healthcare
- Manufacturing
- Non-profit
- Retail
- Media
- Transportation and Logistics



TIM VALKO

Managing Director
Denver, CO

EXPERIENCE

- Over 30 years of experience
- Consulting
- Atara Biotherapeutics, SVP Global Manufacturing and Supply Chain
- Amgen, Executive Director Global Supply Chain
- Pfizer, Supply Chain Director
- US FDA, Asia Pacific Economic Cooperation, European Medicines Agency, Health Canada, Supply Chain Security Advisor

AREAS OF EXPERTISE

- Supply Chain Resilience and Security
- Risk Management
- Illicit Trade
- Counterfeiting

INDUSTRIES

- Pharmaceutical
- Biotechnology
- Healthcare
- Manufacturing



SENIOR ADVISORS



JOHN CHILSON

Senior Advisor

Minneapolis, MN

EXPERIENCE

- Over 20 years of experience
- Park Nicollet Health Services, Employee and Labor Relations
- Regions Hospital, Sr Investigations and Interim Security Director

AREAS OF EXPERTISE

- Employee Relations
- Employment Law
- Labor Relations-Grievances
- Leadership Development
- Talent Management
- Investigations
- Conflict/Dispute Resolution
- EEOC Mediation
- Formal Complaints/Charges and Unemployment Hearings

INDUSTRIES

- Healthcare
- Government
- Public Sector



MICHAEL CLANCY

Senior Advisor

Washington DC

EXPERIENCE

- Over 40 years of experience
- Fannie Mae, Chief Security Officer
- Target, Senior Group Manager, Corporate Compliance and Ethics
- FBI, Deputy Assistant Director
- Attorney

AREAS OF EXPERTISE

- Investigations
- Strategic Risk
- Risk management
- Executive Protection
- Disaster Preparedness
- Physical and technical security platforms

INDUSTRIES

- Financial Services
- Retail
- Government
- Federal Law Enforcement



KEVIN C. DONOVAN

Senior Advisor

Albany, NY

EXPERIENCE

- Over 25 years of experience
- Atlantis Resort & Casino in The Bahamas, SVP of Security & Surveillance
- Naval Nuclear Laboratory, Deputy Director of Security
- FBI, Supervisory Special Agent and Section Chief, Assistant Special Agent in Charge, Legal Attaché to Armenia, Azerbaijan, and Georgia
- Middletown Township, N.J. Police Dept. - Police Officer, Field Training Officer, Undercover Detective

AREAS OF EXPERTISE

- Intelligence
- Physical Security
- Insider Threat Mitigation
- Investigations
- Risk Mitigation
- Surveillance Operations
- International Security and Liaison
- Law Enforcement Training and Development
- Crisis Management
- Executive Protection
- Event Security Planning and Execution

INDUSTRIES

- Hospitality
- Government
- Nuclear Energy and Research
- Law Enforcement



SENIOR ADVISORS



PETE FORD

Senior Advisor

Washington DC

EXPERIENCE

- Over 40 years experience
- Former State Department, Diplomatic Security
- International and domestic
- US American Embassy, Israel, Caracas, Venezuela, Honduras, Lebanon, Security Officer
- Director of Corporate Security, pharmaceutical company
- OSAC, Executive Director; Deputy Executive
- Director of the Office of Hostage Affairs, U.S. Embassy Baghdad

AREAS OF EXPERTISE

- Travel Security
- Executive Protection
- International Security
- Federal LE Relations
- Diplomatic Security Service
- Risk Management
- Workplace Violence
- Security Assessments
- Crisis Management
- Large-event Security

INDUSTRIES

- International
- Federal Law Enforcement
- Government
- Pharmaceutical



LUIS S. FRATICELLI

Senior Advisor

Tampa, FL

EXPERIENCE

- Over 39 years of experience
- Citigroup – Managing Director, Security & Investigations, North and Latin America (Miami, FL)
- Citigroup – Managing Director, Security & Investigations, Latin America (Mexico City, MX)
- FBI – Deputy Assistant Director, Critical Incident Response Group
- FBI – Special Agent in Charge, San Juan Field Office (Puerto Rico)
- FBI – Section Chief, Criminal Investigative Division

AREAS OF EXPERTISE

- Risk Management
- Incident Response
- Insider Threat Mitigation
- Public Corruption & Fraud Investigations
- Executive Protection
- Business Continuity
- Special Event Security Management
- Tactical Operations & Surveillance
- Cross-border & International Law Enforcement Collaboration
- Bilingual – English/Spanish

INDUSTRIES

- Government
- Federal Law Enforcement
- Financial Services
- International Security Operations (Latin America, North America, Caribbean)



ERIK S. GAULL

Senior Advisor

Washington DC

EXPERIENCE

- Office of Mayor Anthony A. Williams, Operational Improvements Division, Washington, D.C., Director
- Samsung, Sr Client Partner
- ARA, Director, Public Safety and Emergency Management Programs
- The World Bank Security and Intelligence Operations Center, Program Manager
- TriData Corporation - Director, Local Government Studies

AREAS OF EXPERTISE

- Crisis Response
- Security Policy Development
- Interagency Coordination
- Enterprise Risk Management
- Emergency Management

INDUSTRIES

- Government
- Federal Agencies
- Public Safety
- Finance



SENIOR ADVISORS



LARISA IVY

Senior Advisor

Bentonville, AR

EXPERIENCE

- Over 25 years of experience
- Management Consultant
- Walmart, Senior Director, Global Security, Facility Security & Workplace Violence
- Walmart, VP, Asia, Investigations
- U.S. Secret Service, Special Agent

AREAS OF EXPERTISE

- Global Security
- Facility Security
- Counter-Insider Threat
- Workplace Violence
- Investigations
- Incident Command
- Strategic Risk

INDUSTRIES

- Retail
- Federal Law Enforcement



KELLY JOHNSTONE

Senior Advisor

Jacksonville, FL

EXPERIENCE

- Over 35 years experience
- Security Consultant
- Coca-Cola, CSO
- International SOS, Advisor
- Federal Law Enforcement, 17 years

AREAS OF EXPERTISE

- Global Security and Governance
- Executive Protection
- Supply Chain Security
- Business Resilience
- Workplace Violence Protection
- Global Intelligence
- Cyber Threat Intelligence
- Cyber Investigations

INDUSTRIES

- Food and Beverage
- Technology
- Aviation
- Federal Law Enforcement



JONESY (SCOTT JONES)

Senior Advisor

Las Vegas, NV

EXPERIENCE

- Over 25 years of experience
- Google, Head of Risk & Crisis Management
- Amazon, Head of Travel, Risk, Intelligence
- Sony PlayStation, Sr. Director, Corporate Security, Director, GSOC
- Southern California Edison, Head of Threat Intelligence and Partnerships
- Target, Lead, Intelligence and Strategic Partnerships
- Department of Homeland Security & United States Air Force

AREAS OF EXPERTISE

- Intelligence
- Business Operations
- Risk Management
- Corporate Travel Programs
- Public-Private Partnerships
- Organizational Development
- Diversity Programs
- Change Management

INDUSTRIES

- Technology
- E-Commerce
- Retail
- Higher Education
- Non-profit
- Military
- Government



SENIOR ADVISORS



JOHN KIRKWOOD

Senior Advisor

Minneapolis, MN

EXPERIENCE

- Over 35 years experience
- Land O'Lakes, Global Security Director
- U.S. Secret Service, Special Agent in Charge
- Ramsey County Sheriff's Office, Chief Deputy Sheriff
- Lincoln Police Department, Police Officer

AREAS OF EXPERTISE

- Executive Protection
- Violence Prevention
- Threat Assessment

INDUSTRIES

- Food and Beverage
- Manufacturing
- Federal and Local Law Enforcement



TIM LEROUX

Senior Advisor

Charlottesville, VA

EXPERIENCE

- Over 25 years of experience
- Kaiser Permanente, Regional Director of Security, Director of Risk Assessment and Mitigation Program
- Sutter Health, Regional Manager for Protective Services
- Better World Collective, Director of Operations
- Local Energy Alliance Program (LEAP) Charlottesville, Director of Operations
- Operations Officer and Chief of Staff, US Army

AREAS OF EXPERTISE

- Workplace Violence
- Risk Assessment and Mitigation
- Emergency and Protective Services
- Domestic and Global Operations
- Strategic and Tactical Planning

INDUSTRIES

- Healthcare
- Nonprofit
- Higher Education
- Military



JAMES W. McJUNKIN

Senior Advisor

Chicago, IL

EXPERIENCE

- CDW Corporation, Vice President
- Global Security Innovative Strategies (GSIS), Principal
- Chicago Cubs Baseball Club, VP, Safety & Security
- Discover Financial Services, VP and CSO
- FBI, Assistant Director in Charge, Washington Field Office
- FBI, Counterterrorism Division, Assistant Director / Deputy Assistant Director

AREAS OF EXPERTISE

- Cybersecurity
- Insider Threat Mitigation
- Crisis Management
- Incident Response
- Risk Assessment
- Threat Mitigation
- Intelligence
- Investigations
- Government Relations
- Executive Protection
- Travel Security
- Crisis Counterterrorism Operations

INDUSTRIES

- Government
- Federal Agencies
- Sports and Entertainment
- Finance



SENIOR ADVISORS



JEN MOBERG

Senior Advisor

Minneapolis, MN

EXPERIENCE

- Over 30 years of experience
- Regions Hospital, Director of Emergency Department
- Abbott Northwestern Hospital, Director of Patient Care for Level 1 and Level 3 Trauma Centers

AREAS OF EXPERTISE

- Patient Safety
- Workforce Safety
- Process Improvement
- Change Management
- Staff engagement and patient experience

INDUSTRIES

- Healthcare



BRIAN MOREFIELD

Senior Advisor

Chicago, IL

EXPERIENCE

- Over 25 years of experience
- Private armed security professional, sports and venue
- Illinois Fire Department - Assistant Fire Chief
- Illinois Joint Task Force - SRT lead medic/operator
- Region 9 technical rescue - Commanding officer
- Physical security provider

AREAS OF EXPERTISE

- Major Event Security
- Tactical Medicine / Medic Operator
- Breaching Techniques and Tactical Training
- Multi-jurisdictional Command Coordination
- Physical Security
- Crisis Management
- Technical Rescue Operations
- Hazmat Operations
- Heavy Rescue / Technical Rescue

INDUSTRIES

- Public Safety
- Private Security
- Professional Sports & Entertainment
- Healthcare & Tactical Medicine
- Physical Fitness / Athletic



ED MORENO

Senior Advisor

Miami, FL

EXPERIENCE

- Over 35 years of experience
- NBCUniversal / Telemundo Enterprises - VP, Security for Latin America
- The Coca-Cola Company - Sr Security Manager
- U.S. Department of State, Diplomatic Security Service - Assistant Director and Special Agent
- Montgomery County, MD Police Department - Police Officer

AREAS OF EXPERTISE

- Global Security
- Facility Security
- Crisis Management
- Executive Protection
- Major Event Security
- International Risk Management
- Diplomatic Security Operations

INDUSTRIES

- Federal Law Enforcement
- Media and Entertainment
- Consumer Goods



SENIOR ADVISORS



CLAUDE NEBEL

Senior Advisor

Boston, MA

EXPERIENCE

- Over 30 years of experience
- Security Consultant
- Cargill, Inc, VP and Chief Security Officer
- U.S. Department of State, Office of Foreign Missions; Deputy Assistant Secretary & Deputy Director; Special Agent in Charge, Boston Field Office
- U.S. Embassy, Berlin, Germany; Regional Security Officer
- Overseas Security Advisory Committee (OSAC); Former Public Sector Co-Chair

AREAS OF EXPERTISE

- Executive Security
- Crisis Management
- Asset Protection
- International Security Operations

INDUSTRIES

- Financial
- Food and Agriculture Industry
- Foreign Service



DAN SCHLEHR

Senior Advisor

Boston, MA

EXPERIENCE

- Over 30 years of experience
- L3Harris - Vice President and Chief Security Officer
- Raytheon - Vice President, Global Security Services
- Philip Morris - Security Leadership
- General Electric - Security Leadership
- U.S. Department of State - Diplomatic Security Service - Special Agent

AREAS OF EXPERTISE

- Physical security programs
- Executive protection and dignitary protection
- Insider threat mitigation
- Counterintelligence programs
- International security operations
- Security risk assessment and mitigation
- Industrial security compliance
- Crisis management

INDUSTRIES

- Defense and Aerospace
- Government
- Industrial / Manufacturing
- Public-private Sector



RICH STANEK

Senior Advisor

Minneapolis, MN

EXPERIENCE

- Over 36 years of experience
- State of Minnesota Public Safety and Director of Homeland Security Commissioner
- Director of National Intelligence, Sr Advisor
- U.S Department of Homeland Security, Sr Advisor
- FBI, Sr Advisor
- Minnesota House of Representatives

AREAS OF EXPERTISE

- Public Safety
- National law enforcement best practices
- Crime Reduction Strategies, Public Policy
- Corporate Security
- Expert Testimony

INDUSTRIES

- Government
- Local and Federal Law Enforcement



SENIOR ADVISORS



NICK TIEMANN

Senior Advisor

Indianapolis, IN

EXPERIENCE

- Over 15 years experience
- Elevance Health, Global Physical Security Technology & Services Director
- Anthem, Security Services & Technology Manager

AREAS OF EXPERTISE

- Security Technology
- Physical Security Technology
- Security Automation
- Global Security

INDUSTRIES

- Technology
- Healthcare



FLORENCE WLODARSKI

Senior Advisor

Los Angeles, CA

EXPERIENCE

- Over 20 years of experience
- AEGIS Response Team, Advisor
- The Hetty Group, Chief Engagement Officer
- Engage Public Safety, Nonprofit Founder
- Target, Security Division, Strategic Partnerships

AREAS OF EXPERTISE

- Public and External Affairs
- Stakeholder Engagement
- Public/Private Partnerships
- Corporate Social Responsibility

INDUSTRIES

- Non-profit
- Law Enforcement



WILLIAM WOODSON

Senior Advisor

Washington D.C.

EXPERIENCE

- Over 30 years of experience
- Arcfield, Systems Integrator
- FBI, Special Agent
- City of Richmond Police Department, Law Enforcement Officer
- United States Army, Military Police Officer

AREAS OF EXPERTISE

- Security Compliance
- Insider Threat
- Background Investigations
- Criminal Investigations
- Strategic Outreach
- International Investigations
- Terrorism
- Cyber-crime

INDUSTRIES

- Government
- Federal Law Enforcement
- Financial
- Higher Education



TECHNICAL COMMUNICATORS



STEVEN OWENS

Chief Editor and
Technical Writer

Chicago, IL

EXPERIENCE

- Over 40 years of experience
- Takeda Pharmaceuticals, Crisis Management and Business Continuity Manager
- Randstad Technologies, Sr Technical Writer
- Siemens, Sr Technical Writer
- 3Com, Principle Sr Technical Writer
- Teradyne, Technical Writer

AREAS OF EXPERTISE

- Regulatory Documentation and Technical Writing
- Crisis and Business Continuity
- Crisis Communication

INDUSTRIES

- Technology
- Telecommunication
- Pharmaceutical



MICHAEL ANDRÉ

Chicago, IL

EXPERIENCE

- Over 30 years of experience
- Amazon Web Services, Programmer Writer
- Cisco Systems, Sr Technical Writer / Sr Staff Technical Writer / Manager
- Ascension Technologies, API Technical Writer
- Follett Campus Resources, Sr Technical Writer
- W.W. Grainger, Sr Technical Writer
- Benu Networks, Director of Technical Communications
- WMS Gaming, Intellectual Property Writer

AREAS OF EXPERTISE

- Technical Writing
- Intellectual Property Writing
- Project Management
- Change Management
- Process Improvement
- Communication Planning

INDUSTRIES

- Technology
- Telecommunication
- Healthcare
- Retail
- Education
- Gaming



BRIAN PIÑON

Chicago, IL

EXPERIENCE

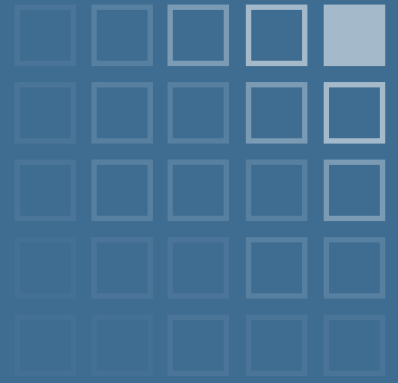
- Over 20 years of experience
- Fleetway Inc., Proposal Manager, Halifax-Class Design Agent Program
- Cisco Systems, Senior Proposal Manager
- American Operations Corporation, Senior Technical Writer & Proposal Manager
- Pinon Consulting, Inc., Senior Technical Writer & Project Manager

AREAS OF EXPERTISE

- Documentation and Technical Writing
- Digital Tools & Communication
- Change Management
- Economic Development

INDUSTRIES

- Telecommunication
- Technology
- Government
- Defense



OUR PARTNERS



AMERICAN HOSPITAL ASSOCIATION

PREFERRED PHYSICAL SECURITY ADVISORY SERVICES PROVIDER

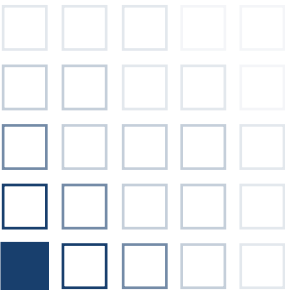


Corporate Security Advisors (CSA) is the American Hospital Association's (AHA) first and only Preferred Physical Security Advisory Services Provider.

The American Hospital Association (AHA) is a national organization that represents and serves more than 6,000 hospitals, healthcare systems, and networks across the United States. They are dedicated to advancing the health of individuals and communities, and provide leadership, advocacy, and resources to support the nation's healthcare organizations.

CSA's exclusive designation as the first and only Preferred Physical Security Advisory Services Provider highlights our expertise and dedication to enhancing safety and security for hospitals and healthcare systems nationwide. We leverage decades of experience with leading institutions such as the Mayo Clinic, Texas Health Resources and Kaiser Permanente, and deliver professional and comprehensive security solutions tailored to the complex challenges of today's healthcare environment.

Through this strategic partnership, CSA empowers healthcare leaders to mitigate risks, protect patients and staff, and ensure world-class care—all while aligning security strategies and services with broader organizational goals.





STRATEGIC PARTNERSHIPS

EXPANDING OUR EXPERTISE FOR YOUR BENEFIT

At Corporate Security Advisors, we believe in providing our clients with a comprehensive approach to security solutions. That's why we've cultivated strategic partnerships with industry-leading experts who seamlessly complement our services. These hand-picked partners enable us to offer a wider range of specialized skills and technologies, ensuring that every aspect of your security needs is met with precision and expertise.

Our partners are chosen based on their proven track record, alignment with our values, and their ability to deliver exceptional results. By collaborating closely with them, we maintain the high standards you expect from CSA while expanding our ability to tackle complex security challenges.

Together with our partners, we deliver an integrated experience that enhances your organization's security posture—whether it's addressing emerging threats, optimizing security protocols, or implementing cutting-edge solutions. When you work with CSA, you're not just benefiting from our team; you're gaining access to a network of trusted professionals with a deep breadth of expertise across the security landscape.





STRATEGIC PARTNERS



BRYGHTPATH NAVIGATING RESILIENCE

Bryghtpath is a recognized leader in crisis management, business continuity, IT disaster recovery and crisis communications, with decades of experience working with the world's leading brands to strategically navigate uncertainty and disruption.

Website: bryghtpath.com

Location: Minneapolis, MN

SPECIALTY AREAS

- Business Continuity
- Crisis Communication
- Crisis, Continuity and Cyber Exercises
- Crisis Management
- Cybersecurity Incident Planning
- IT Disaster Recovery

INDUSTRIES

- Education
- Financial Services
- Government and Public Sector
- Healthcare
- Hospitality and Leisure
- Manufacturing
- Non-Profits
- Power and Utilities
- Retail
- Technology, Media and Communications
- Transportation and Logistics

HOGAN & ASSOCIATES EXECUTIVE SEARCH *Global Search and Leadership Advisory*

Hogan & Associates Executive Search is a boutique firm focusing on global executive and leadership recruitment.

Website: hoganexecutivesearch.com

Location: Minneapolis, MN

SPECIALTY AREAS

- Executive Recruiting
- Senior Leadership
- Strategy and Transformation
- Supply Chain and Operations
- Human Resources
- Diversity & Inclusion

INDUSTRIES

- Finance
- Retail
- Food and Beverage
- Healthcare
- Technology
- Sports
- Public, Private, Private Equity
- Media



Prescient is a global risk management and intelligence services firm. Our team helps corporate stakeholders, law firms, and financial institutions mitigate risk and uncover mission-critical information.

Website: prescient.com

Location: Chicago, IL

SPECIALTY AREAS

- Due Diligence
- Reputation Management
- Cyber Advisory
- Digital Forensics & Independent Response (DFIR)
- Online Threat Monitoring
- Internal & Threat Investigations
- Business Intelligence
- Security Advisory
- Travel Intelligence & Security

INDUSTRIES

- Legal
- Financial
- Corporate



Trenchcoat is the preeminent human-driven risk advisory firm. We look at risk holistically and focus on the role that humans play in creating and responding to it.

Website: trenchcoatadvisors.com

Location: Washington DC

SPECIALTY AREAS

- Incident Response
- Crisis Management
- Investigations
- Risk Assessment and Management
- Intelligence and Security Programs
- Due Diligence
- Executive Guidance

INDUSTRIES

- Government and Public Sector
- Military
- Corporate
- Foreign Governments
- Media
- Sports

THE ART OF STRATEGY

THOSE WHO ARE VICTORIOUS PLAN EFFECTIVELY AND CHANGE DECISIVELY.
THEY ARE LIKE A GREAT RIVER THAT MAINTAINS ITS COURSE BUT ADJUSTS
ITS FLOW... THEY HAVE FORM BUT ARE FORMLESS. THEY ARE SKILLED IN BOTH
PLANNING AND ADAPTING AND NEED NOT FEAR THE RESULT
OF A THOUSAND BATTLES: FOR THEY WIN IN ADVANCE,
DEFEATING THOSE THAT HAVE ALREADY LOST.

—*SUN TZU*

CHINESE WARRIOR, PHILOSOPHER, 100 B.C.



THE BUSINESS OF SECURITY™

Learn more at: corporatesecurityadvisors.com