

black&gold
VENUES+EVENTS

Function Spaces



CONTENTS

Habourside Functions	3
Kumutoto Functions	7
Basin Reserve Functions	11
Public Trust Hall Functions	15
Catering	19
Beverages	20
General Information	21
FAQ's	22

CONTACT US

04 381 2282
events@blackandgold.co.nz
blackandgold.co.nz
4 Taranaki Street, Te Aro, Wellington

Functions at

HARBOURSIDE

FUNCTION VENUE
EST. 1922



HARBOURSIDE

Harbourside is a conference venue created from a historic Wellington wharf warehouse. The former 'Shed 22' has been transformed into three beautiful venue spaces. As a location for corporate events or social gatherings, our function centre with stunning waterfront views can fit the bill in so many ways.

Harbourside used to house wool, wood and flax in one of its working lives, and a brewery in another. Its impressively high stud spaces have been converted into architecturally designed meeting rooms. The brick walls and metal joinery of the saw tooth roof give an industrial, New York loft feel, while the half-moon windows and glass ceilings flood the rooms with natural light.

The venue comprises of three unique rooms across three levels, with additional breakout spaces available, which can be multi-configured to suit large or small groups. All our meeting rooms are air-conditioned, and have high-speed wifi connections. All these spaces also have disabled access.

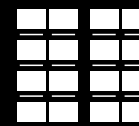
Harbourside is situated in the heart of the world's coolest little capital - a hop, skip and a jump from the Te Papa National Museum, only a few minutes walk from the Wellington CBD and a 20 minute drive from Wellington Airport.



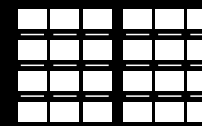
EVENT SPACES

SPACE	CONFERENCE	STANDING	THEATRE
Te Aro	120	450	250
Cable	72	220	190
The Loft	48	80	60
Waterfront Room	50	120	60
Ururangi	60	80	60
Tupuānuku	60	80	60
Te Aro & Waterfront combined	210	650	300

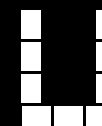
LAYOUT OPTIONS



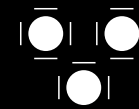
Classroom



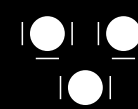
Theatre



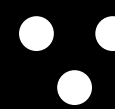
U Shape



Banquet



Cabaret



Cocktail

TE ARO

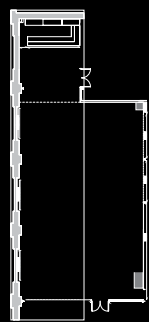


A conference space created from what was a historic Wellington wharf warehouse now accommodates corporate meetings, gala dinners, and social events. The room is open, unobstructed, and accessible, while featuring integrated lighting, private bars and hi-tech built-in AV. The Te Aro room can also be combined with the Waterfront room which can accommodate up to 230 people for a sit-down dinner, or 650 for stand-up cocktails or corporate events.

LAYOUT OPTIONS CAPACITY

- Classroom — 120 max
- Theatre — 250 max
- U Shape — 65 max
- Banquet — 150 max
- Cabaret — 120 max
- Cocktail — 450 max

FLOORPLAN



CABLE ROOM



With wooden floors, character brick decor, stained-timber feature wall and large windows, the Cable room is ideal for many events. Its complete lack of pillars and high ceilings make this large space perfect for meetings, trade shows and larger social occasions. Part of its venue hire includes its own dedicated bar area. This event space is fully air-conditioned and has high-speed wifi. It has a capacity for up to 220 guests, and includes wheelchair access.

LAYOUT OPTIONS CAPACITY

- Classroom — 72 max
- Theatre — 190 max
- U Shape — 50 max
- Banquet — 90 max
- Cabaret — 72 max
- Cocktail — 220 max

FLOORPLAN



THE LOFT

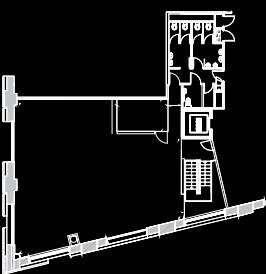


The Loft is a function venue which is great for workshops and interactive meetings. The New York Loft aesthetic, integrated bar and lighting enhance the character of the room and make it equally popular for celebrations and cocktail events. Located on the second level with disabled access, it is fully air-conditioned and connected to high-speed wifi.

LAYOUT OPTIONS CAPACITY

- Classroom — 30 max
- Theatre — 60 max
- U Shape — 30 max
- Banquet — 48 max
- Cabaret — 36 max
- Cocktail — 80 max

FLOORPLAN



THE WATERFRONT ROOM

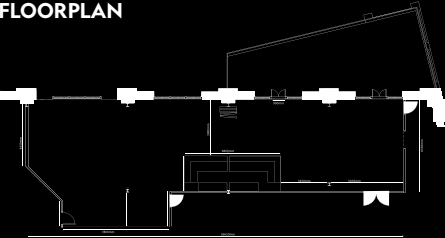


The Waterfront Room has a stunning harbour view which can be enjoyed through ceiling-to-floor windows or out on the large balcony the room offers.

LAYOUT OPTIONS CAPACITY

Theatre	60 max
Banquet	50 max
Cabaret	40 max
Cocktail	120 max

FLOORPLAN



URURANGI (B1)



A fixed boardroom for up to 14 people, and along with harbour views it boasts air-conditioning and high-speed WiFi connectivity.

LAYOUT OPTIONS CAPACITY

Theatre	60 max
Banquet	60 max
Cabaret	36 max
Cocktail	80 max

TUPUĀNUKU (B4)



A versatile boardroom, along with harbour views it boasts air-conditioning and high-speed WiFi connectivity and includes the use of two 65" TV screens for presentations.

LAYOUT OPTIONS CAPACITY

Theatre	60 max
Banquet	60 max
Cabaret	36 max
Cocktail	80 max

THE TE ARO ROOM & WATERFRONT COMBINED



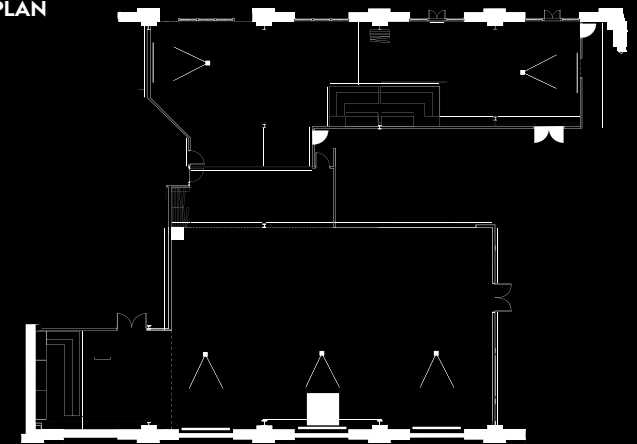
The Te Aro Room is a large open space with no pillars and a New York loft feel. With a high ceiling featuring a stunning saw tooth roof, the room is a space with a difference. Our clients find it an ideal space for larger conferences and events. The Waterfront Room has a stunning harbour view which can be enjoyed through ceiling-to-floor windows or out on the large balcony the room offers.

The Te Aro Room works perfectly when used in conjunction with the Waterfront room for events needing even more space. This is done by simply adjusting movable walls.

LAYOUT OPTIONS CAPACITY

Theatre	300 max
Banquet	210 max
Cabaret	168 max
Cocktail	650 max

FLOORPLAN



Functions at

KUMUTOTO
FUNCTION VENUE EST. 2018

black&gold
VENUES+EVENTS



KUMUTOTO WELLINGTON

Discover Kumutoto, where exceptional meeting rooms and conference venues meet stunning waterfront views in the heart of Wellington. Ideally situated on the edge of the harbour, just minutes from the Beehive, government buildings, and a short walk to the train station.

Kumutoto function venue, located in the PWC Centre, features three versatile meeting rooms. Each room is equipped with air conditioning, high-speed WiFi, and full wheelchair access.

Located on the first floor of the PWC Centre, the Kumutoto entrance is directly accessible from Waterloo Quay. Enjoy panoramic views through floor-to-ceiling windows that offer vistas of the water and the vibrant hustle and bustle of the nearby CBD, with Wellington airport just a 25 minute drive away.



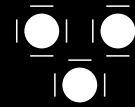
EVENT SPACES

SPACE	CONFERENCE	STANDING	THEATRE
Runanga	16	-	-
Dual Taniwha	58	150	126
Whataitai	40	-	60
Ngake	32	-	40

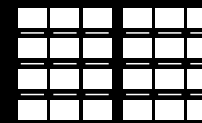
LAYOUT OPTIONS



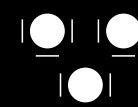
Boardroom



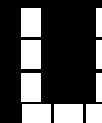
Banquet



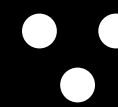
Theatre



Cabaret



U Shape



Cocktail

RUNANGA

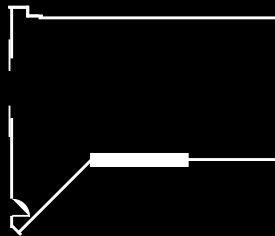


This fixed modern boardroom encased in glass windows with stunning harbour views. Integrated audio-visual equipment, wall-mounted whiteboard and lighting makes this one of the best Boardrooms of its size in Wellington with a capacity of 16.

LAYOUT OPTIONS CAPACITY

Seated ————— 16 max
Boardroom ————— 16 max

FLOORPLAN



DUAL TANIWHA



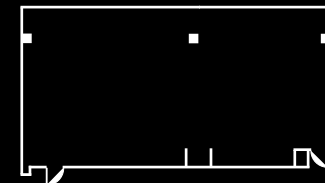
The combined Ngake and Whātaimai meeting rooms make up Dual Taniwha. It can operate as a larger corporate event space with double the magnificent Wellington harbour views. Perfect for any corporate occasion or CBD exhibition space.

Dual Taniwha has high speed wifi, as well as presentation facilities built and managed by our audio visual partner, AV Media.

LAYOUT OPTIONS CAPACITY

Theatre ————— 120 max
Banquet ————— 64 max
Cabaret ————— 48 max
Cocktail ————— 100 max

FLOORPLAN



WHATAITAI



This purpose-built conference and meeting space on the first floor of the conference venue is perfect for small to medium meetings.

LAYOUT OPTIONS CAPACITY

Theatre ————— 60 max
Banquet ————— 40 max
Cabaret ————— 30 max

NGAKE



Ngake is situated next to the Whataitai and is great for smaller corporate meetings and events.

LAYOUT OPTIONS CAPACITY

Theatre ————— 40 max
Banquet ————— 32 max
Cabaret ————— 18 max

Functions at





THE BASIN RESERVE

Welcome to 'The Basin,' one of the world's most iconic and intimate cricket venues, and a unique Wellington offering. As New Zealand's oldest Test cricket ground and the only one with Historic Place status, The Basin combines historic prestige with modern charm.

Our two function spaces provide fantastic views directly onto the wicket, making it one of our most playful venues and ideal for creating memorable and engaging events. Located in the RA Vance Stand, our function rooms offer convenient driveway access for buses and parking for up to 30 cars. Situated just minutes from the CBD, Cuba Street, and Courtney Place, The Basin is easily accessible via major bus routes, with easy access to the motorway and Wellington Airport, just 15 minutes away.

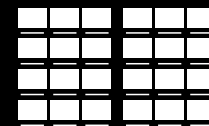
Through our exclusive partnerships with Cricket Wellington and The Basin Reserve Trust, we can elevate your event with unique cricket experiences. Enjoy activities such as practicing in the indoor nets, capturing team photos in front of the scoreboard, ground tours, meeting the Firebirds, and much more!



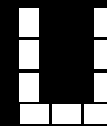
EVENT SPACES

SPACE	STANDING	SEATED
Trish McKelvey Lounge	150	96
The Norwood Room	200	150

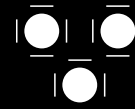
LAYOUT OPTIONS



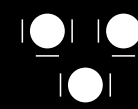
Theatre



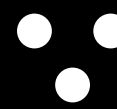
U Shape



Banquet



Cabaret



Cocktail

TRISH MCKELVEY LOUNGE

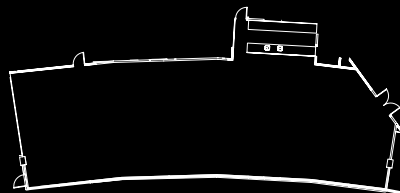


Boasting floor-to-ceiling windows that bathe the space in natural light, this venue is truly a gem in Wellington. Featuring a built-in bar and versatile layout, it is perfect for everything from corporate exhibitions to elegantly styled lunches and dinners looking out onto the cricket ground. With the capacity to host up to 150 guests, The Longroom offers a mixture of tradition and comfort and is a special space that provides an experience unique in New Zealand.

LAYOUT OPTIONS CAPACITY

Theatre	100 max
U Shape	40 max
Banquet	96 max
Cabaret	72 max
Cocktail	150 max

FLOORPLAN



THE NORWOOD ROOM



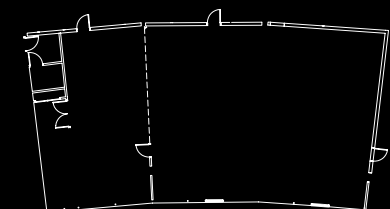
Welcome to The Norwood Room, a distinguished venue steeped in cricketing history. This room boasts a grand honours board, celebrating some of the all time greats in the cricket world.

With fantastic views of the wicket and ground, high ceilings, and generous space, it provides an ideal setting for any event or gathering. Situated conveniently across from Trish McKelvey Lounge, The Norwood Room can be easily adapted to suit your needs - whether you require smaller breakout areas or a conference setup in its largest layout.

LAYOUT OPTIONS CAPACITY

Theatre	150 max
U Shape	40 max
Banquet	120 max
Cabaret	84 max
Cocktail	200 max

FLOORPLAN



Functions at





THE PUBLIC TRUST HALL

Looking for somewhere to host your party, product launch or performance? Or even a big meeting room? Look no further. Public Trust Hall can meet all your event needs.

Situated in the Public Trust Building, this splendid space has been transformed into an iconic heritage venue. As one of New Zealand's finest examples of Edwardian Baroque architecture, The Public Trust Building sits at the heart of our country's culture and heritage.

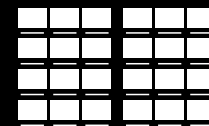
Located on Lambton Quay, Public Trust Hall is the venue of choice for a range of corporate and social functions and events.



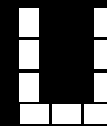
EVENT SPACES

SPACE	STANDING	SEATED
Main Hall	300	200
The 1908 Room	50	50

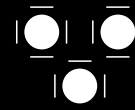
LAYOUT OPTIONS



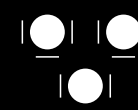
Theatre



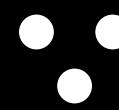
U Shape



Banquet

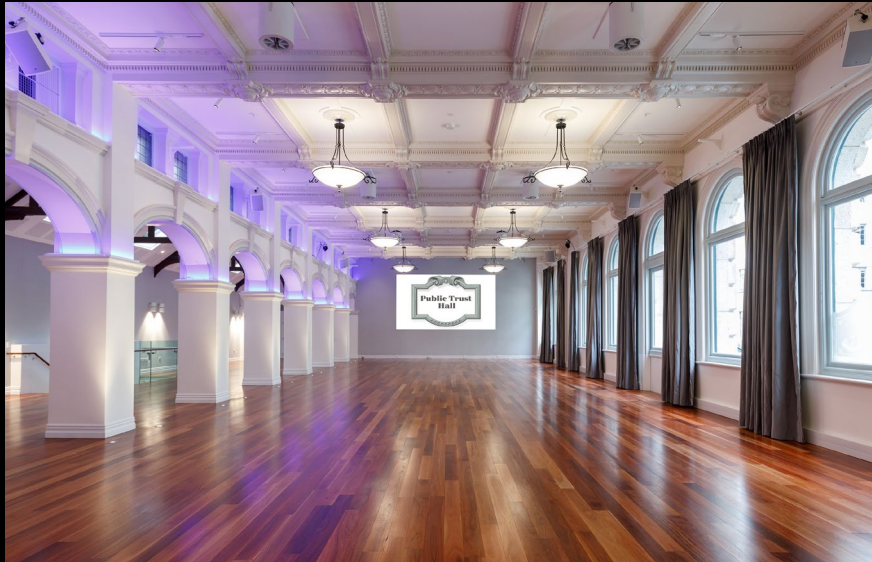


Cabaret



Cocktail

MAIN HALL

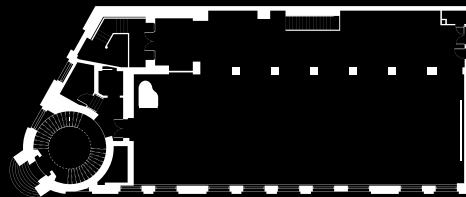


Looking for somewhere to launch your product, host your clients or stage your performance? Public Trust Hall offers the versatility and convenience to meet all your event needs. Our acoustics are perfect for chamber music and the space can be configured in many different ways.

LAYOUT OPTIONS CAPACITY

Cocktail	300
Theatre	250
Cabaret	160
Banquet	200

FLOORPLAN



THE 1908 ROOM



The 1908 Room is an affordable function space located below the Hall. With a capacity of up to 60, it is perfect for smaller meetings, training days, community functions and events. It can also be used as a Green Room for the Hall.

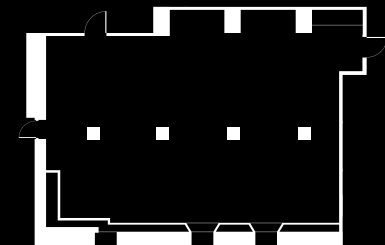
The room is approximately 110m², with pillars that run down the centre.

Access is direct from Lambton Quay.

LAYOUT OPTIONS CAPACITY

Cocktail	50
Theatre	50
Banquet	50

FLOORPLAN





CATERING

We provide dedicated catering for all venue hire spaces.

Our menus have been specifically designed to give you freedom of choice. We use fresh local and seasonal produce where possible, and dishes are made by our team of in-house chefs. To cater for your guests requirements, we have included a large number of gluten free, dairy free, vegetarian and vegan dishes.



BEVERAGES

Our drinks menu includes a wide range of craft beer, as well as a curated list of New Zealand wine and French champagne.

Your events coordinator can help you customise a drinks list to suit your event, with beverages being charged on consumption as a bar tab, subsidised or cash bar.

GENERAL INFORMATION

FOOD

Please ensure that all events and functions order food in advance from the events menu provided.

Menus subject to change based on seasonal availability.

Our culinary experience is crafted by a team of international chefs, each bringing their unique flavors and techniques from around the globe. Whether you're celebrating a special occasion or simply looking to indulge in exceptional cuisine, we promise to elevate your dining experience

BEVERAGE

Cash bar

Guests purchase beverages as they require from our full beverage menu.

Bar tab

You can specify the range of beverages available and a credit limit for the event account. Your guests can then charge drinks onto the account throughout the event. Once the account limit has been reached, you can choose to either increase your account limit, or guests can purchase from a cash bar.

Subsidised bar tab

You may subsidise your bar tab to any amount. Speak with your sales coordinator to discuss the best option for your budget.

FEES

Room hire fee for each room

Includes access to duty manager, floor staff, bar staff, bar, standard furniture, table cloths, dedicated sales coordinator, standard room set-up and cleaning, Wi-Fi, wheelchair access and nearby parking.

Guest numbers and catering details

All event details are to be confirmed 14 days prior to the commencement of your event unless otherwise agreed, including but not limited to: food and beverage catering requirements, dietary requirements, pack in/pack out schedule, payment/invoicing details.

Please note: The number of guests to your function will not exceed the agreed number of guests.

All credit card payments will incur a 2% surcharge.

GENERAL INFORMATION

FAQ'S

Are we allowed a band or DJ? Yes, this can be accommodated for the Cable room, The Loft, Waterfront, Kumutoto, Basin Reserve and Public Trust Hall - Please speak to your sales coordinator to organise this.

For Te Aro room: All music, bands, DJ services and/or other performances held within the Te Aro room at Harbourside Function Venue must be organised and confirmed in writing with your event manager and should not exceed the maximum internal noise limit. All events must adhere to the Harbourside Function Venue, Te Aro Room Noise Management Plan, specifically:

- Amplified events must be always run through the in-house audio system
- Amplified sound meter readings within Te Aro room must remain below 85dB LAeq (15min)
- The venue reserves its right to conduct regular sound meter readings throughout the duration of the event
- If sound meter readings exceed 85 decibels, management reserves its right to decrease the sound output levels
- Event volume during the event is at the sole discretion of the venue manager
- Event volume is not to negatively impact other events being held within Harbourside Function Venue

What time does the bar close? We are licenced until 3am, however the bar will typically do last call 30 minutes prior to the end of the event.

Can we decorate the venue? With our prior written consent, you may provide or arrange for the provision of music, decorations, furnishings, and other such equipment, materials, goods, services, or facilities for your function. Nothing to be hung on any painted walls.

What can I leave in the venue overnight? The venue will grant you reasonable access to the specific area(s) for the purposes of providing, setting up and removing of equipment, materials, goods, services, or facilities of your function. If you require significant pack in, then you will need to hire a pack in period which can be quoted when booking your event.

You will be responsible for the delivery, collection, safety, insurance of, and any damage or loss caused by any equipment, materials, goods, services, or facilities you bring to the venue.

Can we bring our own alcohol or food? Due to the nature of our license, this is not possible.

Do you charge a cakeage fee? You may bring a cake as part of your event at no additional cost. A cakeage fee will apply if the chef is required to prepare the cake for serving (i.e. cutting, plating)

Can you cater to dietary requirements? Yes we can cater to dietary requirements. Our kitchen is also halal-friendly (but not strictly halal).

What ID do you accept? Only a NZ drivers licence, valid passport or Kiwi Access card (all within expiry date) will be accepted as proof of age. We are legally required to ask anyone who looks under 25 to present ID.

Can we bring children? Minors are welcome on the premises, but must be supervised at all times.

Do you provide AV? All AV is provided through AV Media.

CONTACT US

04 381 2282

events@blackandgold.co.nz

blackandgold.co.nz

4 Taranaki Street, Te Aro, Wellington



WANT \$1 BACK FOR EVERY \$10 YOU SPEND?

Join Star Social, the loyalty programme that rewards you with \$1 back for every \$10 you spend, plus access to exclusive member deals and promotions at any of Star Group's 50+ bars, pubs and restaurants across the North Island.

1. Download the Star Social app,
or visit starsocial.co.nz to register
2. Verify your account
3. Scan your ID in the app or provide your phone number
to staff before paying to earn Star Points
4. Redeem Star Points for food or drink at over 50 bars,
pubs & restaurants

View locations and find out more at starsocial.co.nz



*Earn up to a maximum of 1000 Star Points per day. Star Social Terms & Conditions apply at stargroup.nz/starsocial-terms.