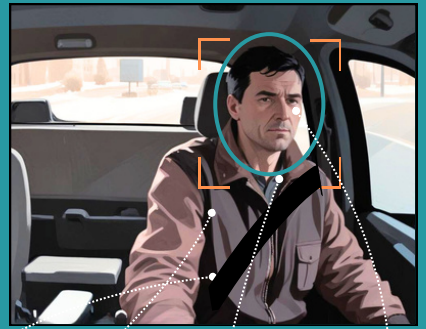


Essential Camera Mounting Guidelines for Fleets: *The Do's and Don'ts*

Proper camera mounting empowers fleets to prioritize safety, compliance, and operational efficiency.

Driver-Facing Camera Setup



Mount the camera closer to the driver than the center

Must have unobstructed driver view, even with sun visor down

Prefer frontal or near frontal view over side view

Ensure both eyes are visible

Mount camera high within wiper sweep area (follow local rules)

Ensure seatbelt visibility

Position the driver's face within the recommended zone



Common Mistakes to Avoid



Camera mounted at or below eye level

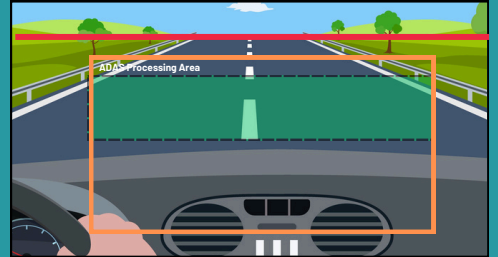
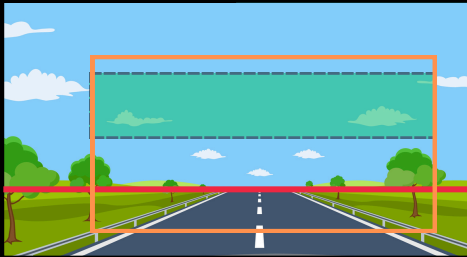
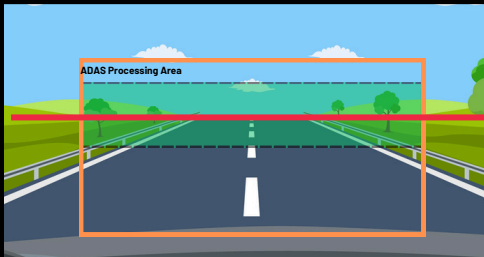


Camera positioned away from the driver, hindering clear eye view



Seatbelt not clearly visible

Road-Facing Camera Setup



Perfectly aligned - horizon line is approximately in the middle of the camera

Camera has too much sky

Camera has too less sky (too much hood)



Reduce hood obstruction; ensure minimum visibility



Center the horizon line in the camera view



Use Companion App for setup and verification, or press panic button for video review



Installation Best Practices



Route wires around windshield as needed



Secure cables and ensure there are no dangling wires



Power on and verify LED status



Provision the device correctly with fleet and asset/vehicle details



Contact support for assistance



Use LightMetrics App wherever possible



Camera should not have any obstructions



Mount camera closer to driver to capture both eyes



Remove the protective film on both lenses



Choose mounting position carefully, clean the surface, and stick securely. Once attached, the camera cannot be removed.