

INSPINIA INS-SCA24

Intercom - Datasheet



Product Side Views



INSPINIA INS-SCA24

Intercom - Datasheet



Product Specifications

Hardware / Software:	Android based system 512 MB RAM / 4GB ROM Front Panel: Plastic Product Dimensions : 303 x 195 x 35 mm
Display:	10.1-inch TFT LCD Screen: Capacitive touch screen
Power Supply:	PoE (802.3af) or DC 12V/2A
Camera and Video:	Resolution: 0.3 MP, CMOS front camera, 1024 x 600 pixels Video Codec: H.264 Supports monitoring of up to 8 IP cameras
Audio Features:	Audio Codec: G.711 Microphone: Built-in Speaker: Built-in with echo cancellation
Connectivity:	Ethernet: 1 x RJ45, 10/100 Mbps adaptive Protocols: SIP, UDP, TCP, RTP, RTSP, NTP, DNS, HTTP, DHCP, IPv4, ARP, ICMP
Access Control:	Message sending and receiving capabilities Alarm and call logs management SIP 2.0 protocol support for easy integration with other SIP devices
Working Temperature	Temperature: -10°C to +55°C Humidity: 10% to 90% (non-condensing)
Certificates:	CE

Order Code(s)

INS-SCA24



INSPINIA INS-SCA24

Intercom - Datasheet



PORTS & CONNECTIONS



1 Camera

2 Power LED

3 Unlocking

 SKY
THINGS

 INSPINIA

Inspiration for your **living space**
www.inspinia.eu

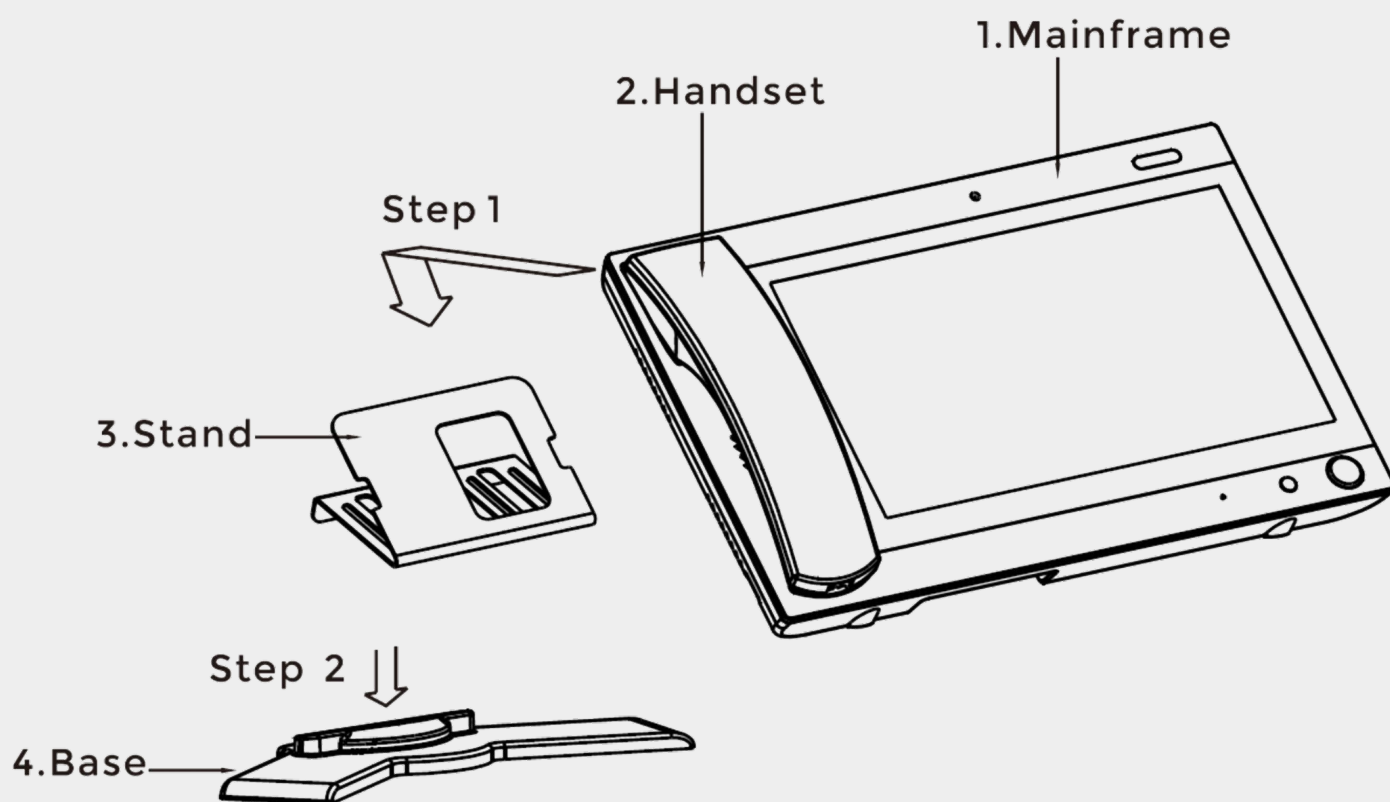
INSPINIA INS-SCA24

Intercom - Datasheet



HOW TO MOUNT YOUR INSPINIA

On Desktop



SKY
THINGS

INSPINIA

Inspiration for your **living space**

www.inspinia.eu