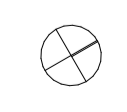


±0.00 = 660.75 m.ü.M = EG Gemeinschaftshaus

2630 REM3

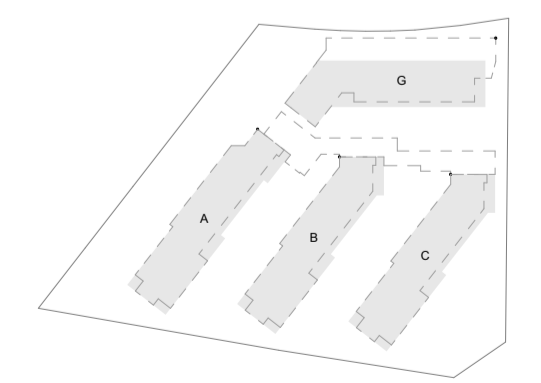
St. Gallen Remishueb 3

S&H Staufe & Hasler Architekten AG RSA SGA
 Industriestrasse 23 8500 Frauenfeld
 T +41 52 723 08 08 www.staufe-haslter.ch



Bauprojekt
 H_ABCG - GRU - HG Sockelgeschoss_HABC Erdgeschoss 1:200

Pl-Nr.	Datum	Gez.	SI	Format	84/60	Rev Dat.
12.01.01	12.12.2025					

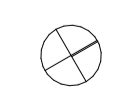


±0.00 = 660.75 m.ü.M = EG Gemeinschaftshaus

2630 REM3

St. Gallen Remishueb 3

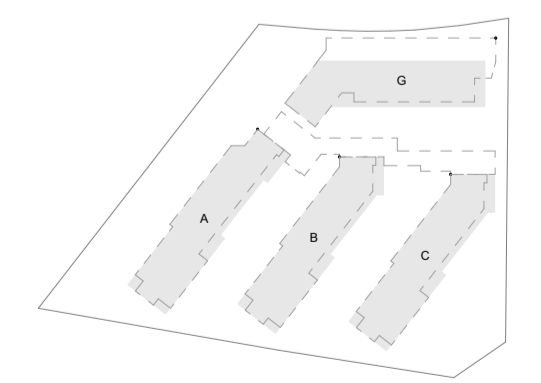
S&H Staufe & Hasler Architekten AG RSA SGA
 Industriestrasse 23 8500 Frauenfeld
 T +41 52 723 08 08 www.staufe-haslter.ch



Bauprojekt
 H_ABCG - GRU - HG Erdgeschoss_HABC 1.Obergeschoss

1:200

Pl-Nr.	Datum	Gez.	SI	Format	84/60	Rev.Dat.
12.01.02	12.12.2025					

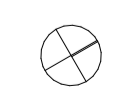


±0.00 = 660.75 m.ü.M = EG Gemeinschaftshaus

2630 REM3

St. Gallen Remishueb 3

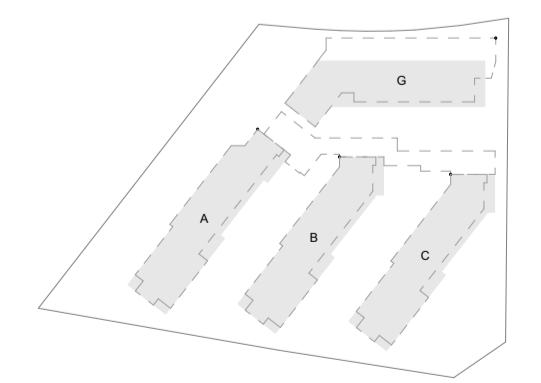
S&H Staufe & Hasler Architekten AG RSA SGA
 Industriestrasse 23 8500 Frauenfeld
 T +41 52 723 08 08 www.staufe-haslter.ch



Bauprojekt
 H_ABCG - GRU - HG 1.Obergeschoss_HABC 2.Obergeschoss

1:200

Pl-Nr.	Datum	Gez.	SI	Format	84/60	Rev.Dat.
12.01.03	12.12.2025					

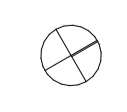


±0.00 = 660.75 m.ü.M = EG Gemeinschaftshaus

2630 REM3

St. Gallen Remishueb 3

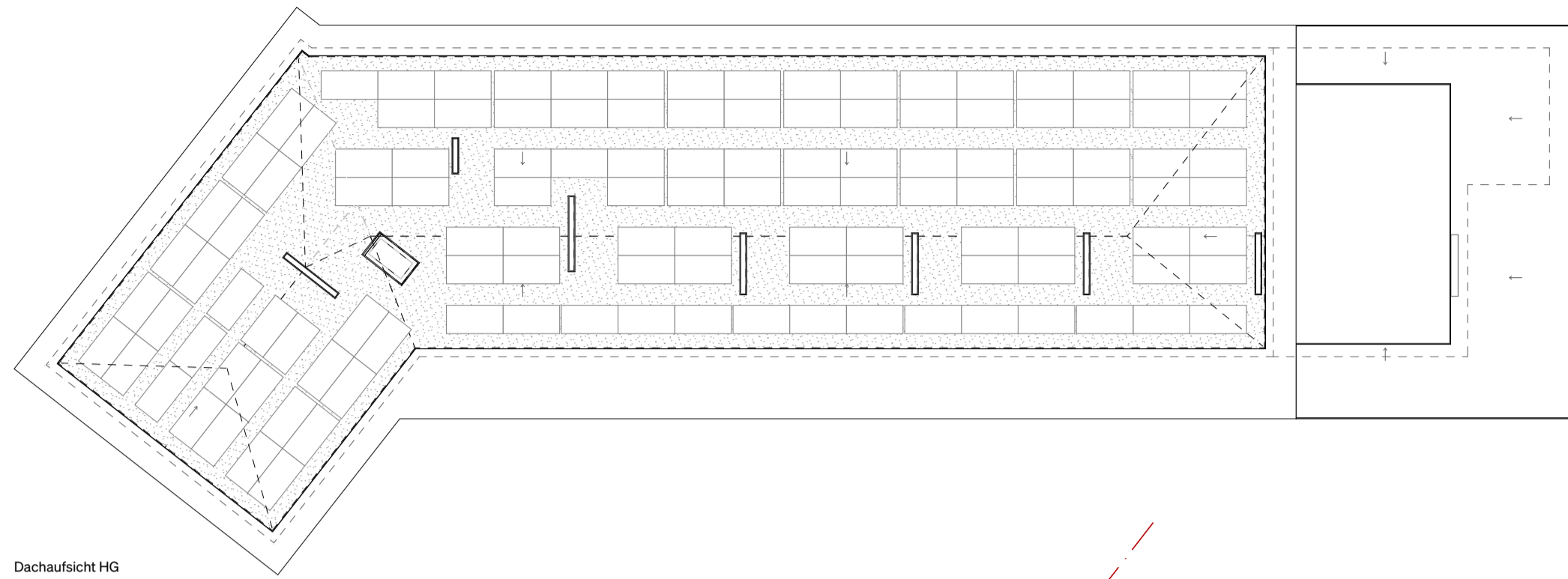
S&H Staufe & Hasler Architekten AG RSA SGA
 Industriestrasse 23 8500 Frauenfeld
 T +41 52 723 08 08 www.staufe-haslter.ch



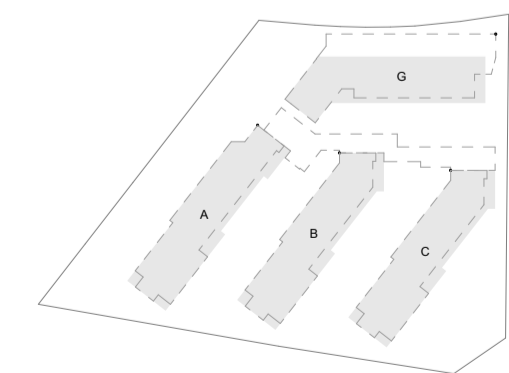
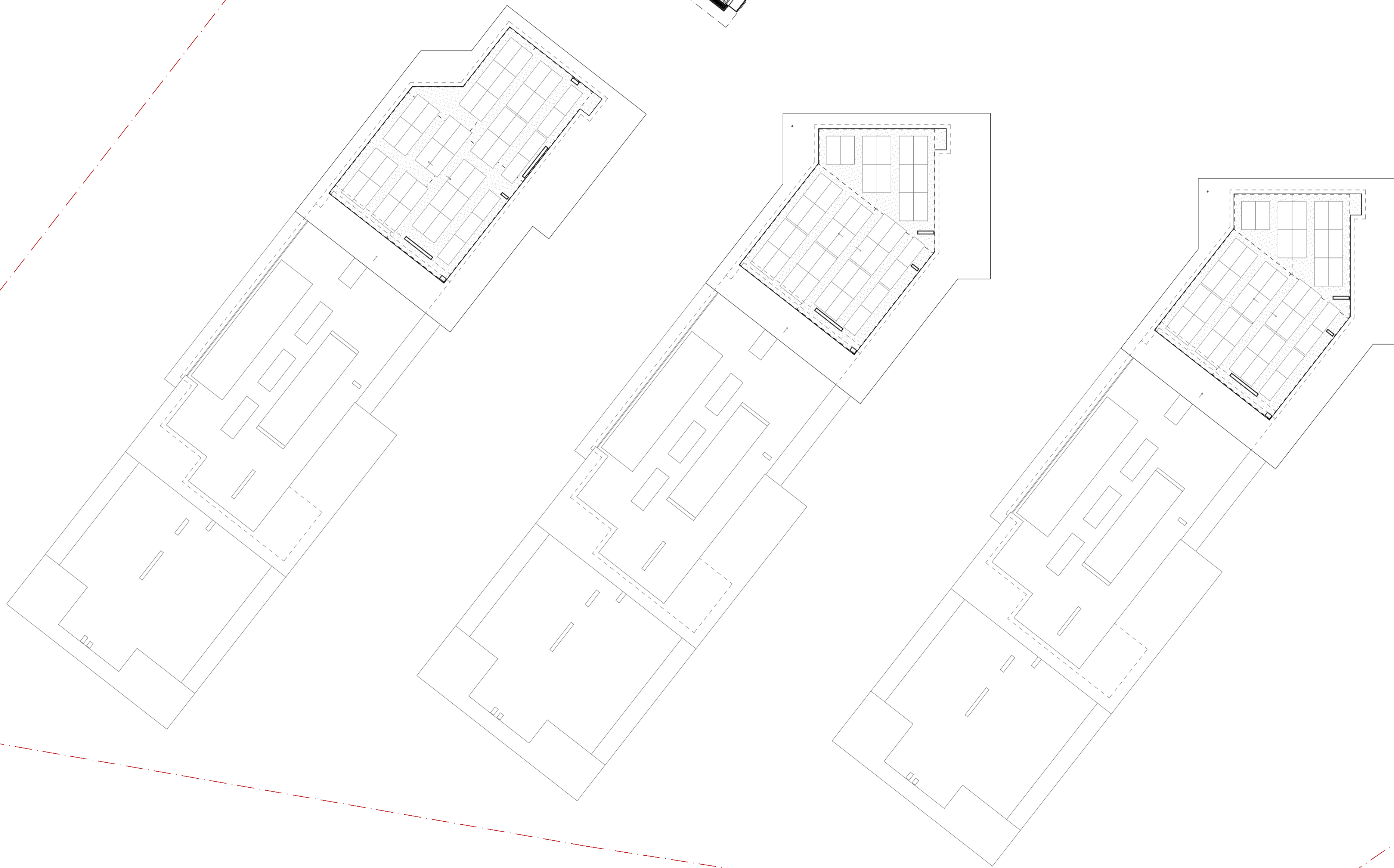
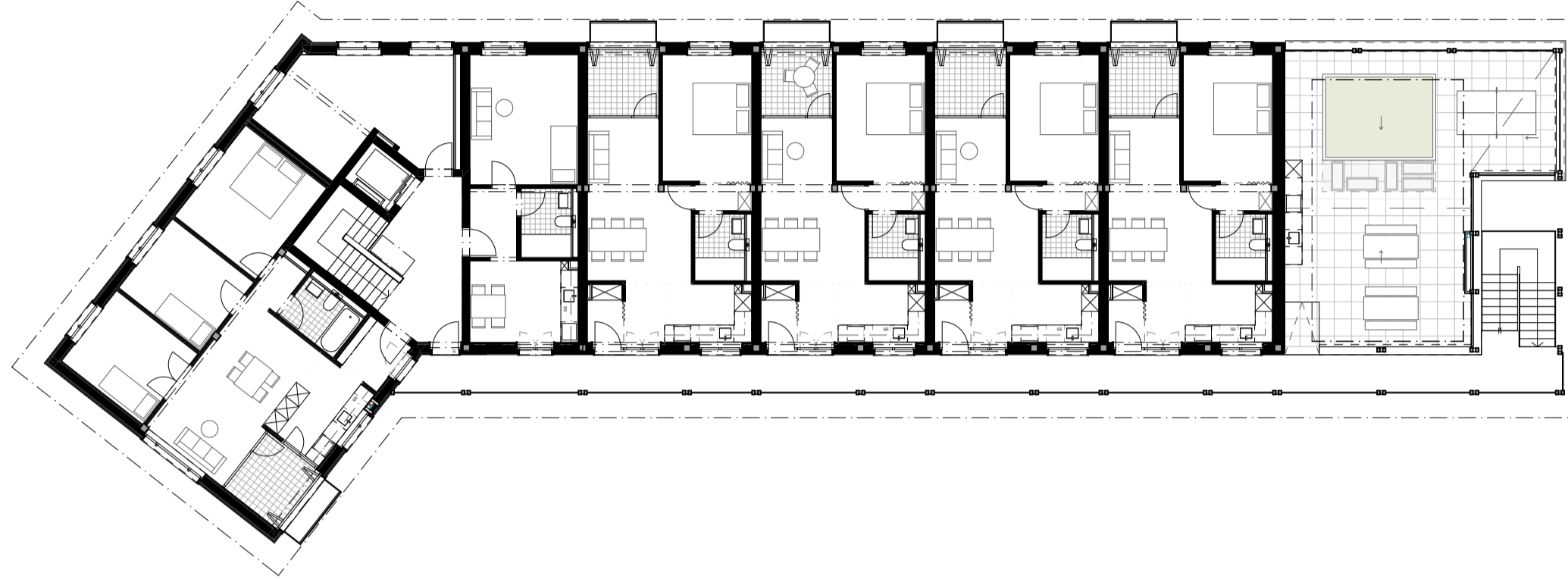
Bauprojekt
 H_ABCG - GRU - HG 2.Obergeschoss_HABC 3.Obergeschoss

1:200

Pl-Nr.	Datum	Gez.	SI	Format	84/60	Rev Dat.
12.0104	12.12.2025					



Dachaufsicht HG



±0.00 = 660.75 m.ü.M = EG Gemeinschaftshaus

2630 REM3

St. Gallen Remishueb 3

S&H Staufe & Hasler Architekten AG RSA SGA
 Industriestrasse 23 8500 Frauenfeld
 T +41 52 723 08 08 www.staufe-haslter.ch



Bauprojekt
 H_ABCG - GRU - HG 3.Obergeschoss_HABC Dachaufsicht

1:200

Pl-Nr.	Datum	Gez.	SI	Format	84/60	Rev Dat.
12.01.05	12.12.2025					