



# Blue<sup>2</sup>Box

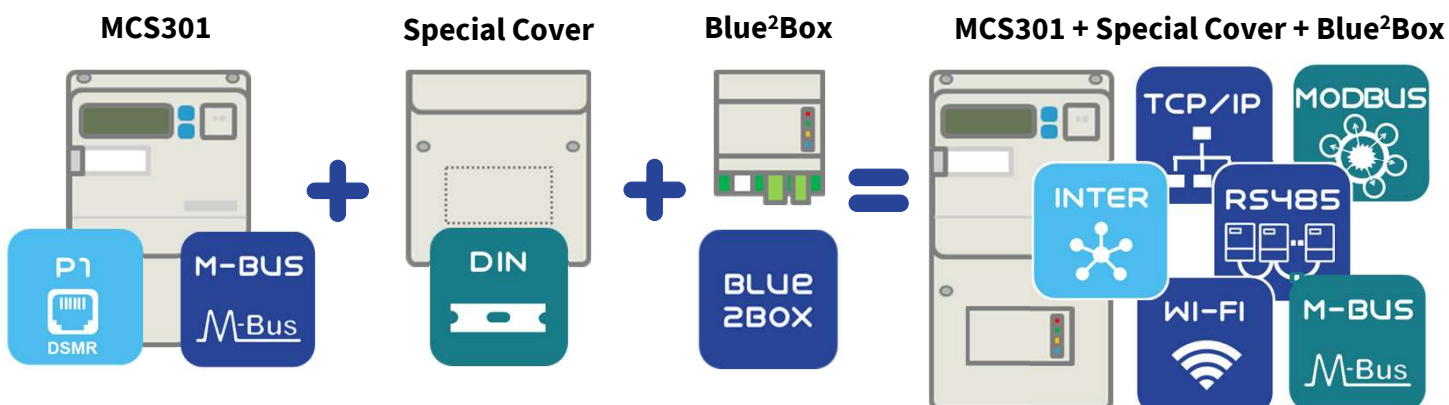


Provides SCADA interfaces and protocols using MCS301 meter's P1/DMSR interface



## BLUE<sup>2</sup>BOX

- ✓ MCS301 meter pushes periodically data via customer interface P1/DMSR to the Blue<sup>2</sup>Box
- ✓ Blue<sup>2</sup>Box reprocesses the data for SCADA
- ✓ Interoperability with interfaces and protocols:
  - ✓ Input: B2B Customer Interface (P1 DMSR: RJ12)
  - ✓ Output: Ethernet: LAN TCP/IP and ModBus TCP, RS485: ModBus RTU, M-Bus: M-Bus Slave
- ✓ 3-Leds for signaling: Comm. from meter, status and Modbus/M-Bus activity
- ✓ Powered from MCS301 or alternative from USB-C
- ✓ Local configuration with button
- ✓ Configuration, diagnosis and current data via web service (LAN TCP/IP or optionally WLAN AP)
- ✓ Prepared for local or remote firmware update



## Technical Specification

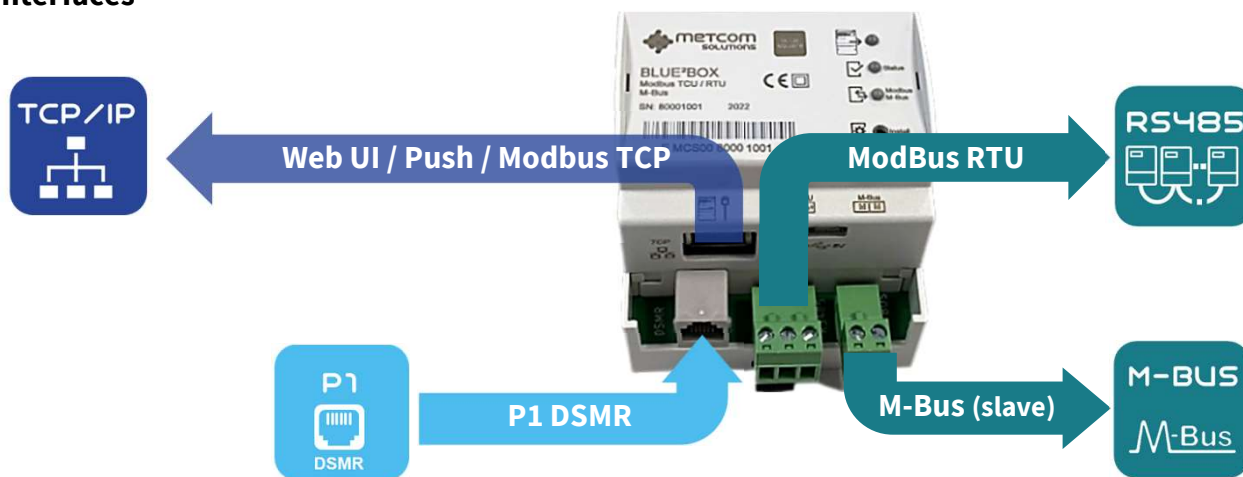
<b>Power supply</b>	P1/CIF	max 250 mA
	USB-C	5V (max. 250 mA)
<b>Temperature / Environmental influences</b>	Operation	- 30°C ... +70°C
	Storage	- 30°C ... +85°C
	Humidity	95% rel. humidity, non-condensing
<b>Electro-magnetic Compatibility</b>	Security	EN 60950-1
	Noise immunity	EN 60950-1
	Emission	EN55022
<b>Communication Interfaces</b>	Customer Interface CIF (RJ12)	P1 - DSMR 4.2 / 5.0
	M-Bus (Terminals)	2 M-Bus Loads
	RS-485 (Terminals)	RS-485 Half Duplex ModBus RTU
	LAN Ethernet (RJ45)	TCP/IP, IPv4, 10M/100Mbit, IEEE 802.3, ModBus TCP
	WAN Wi-Fi	TCP/IP and full 802.11 b/g/n Wi-Fi MAC protocol
	Dimensions	62 x 71.3 x 90.5 mm
<b>Housing</b>	Material	Polycarbonate, flame-retardant, self-extinguishing plastic, recyclable
	Protection class	IP 20

## Installation

Few and easy steps:

- ✓ Connect P1 DSMR interfaces from MCS301 and Blue2Box
- ✓ Supply power to the Blue2Box from P1/CIF or to the USB-C (5V)
- ✓ Follow the instructions
  - ✓ With Smart phone: Scan the QR code located at the side of the
  - ✓ With a PC/Laptop: Connect a LAN cable to the RJ45 port and type in your browser the IP address 192.168.4.1
- ✓ Close and secure the terminal cover.

## Interfaces



## BLUE SQUARE CONCEPT



## About Us

MetCom Solutions GmbH was founded with the aim to Develop, Manufacture and Deliver innovative Metering solutions and support Utilities to master their Digital Transformation journey.



## MetCom Solutions GmbH

Marie-Curie-Str. 19, D-68219  
 Mannheim, Germany  
 +49 (0) 621 861990 86  
 +49 (0) 621 861990 87  
 info@metcom-solutions.com  
 www.metcom-solutions.com