



LAKE CITY  
LAHORE

# 5 Bedroom Villa

Plot Size: 7 Marla







Nayyar Ali Dada  
& Associates



**Nayyar  
Ali Dada**

Hilal-i-Imtiaz (Crescent of Excellence)  
Aga Khan Award for Architecture



**Raza  
Ali Dada**

Arcasia Gold Medal  
Aga Khan Award for Architecture

Nayyar Ali Dada & Associates is an internationally acclaimed architectural practice established in 1978. The founder of NADA, Mr. Nayyar Ali Dada is a living legend of Pakistan and has received the honourable Hilal-e-Imtiaz by the Government of Pakistan. Throughout the firm's working history, it has served notable clients and produced a vast portfolio that spans across the private and public sectors. Due to a number of sensitive public projects, the firm enjoys a strong and highly respectable position as a leading design firm in Pakistan.



Lake City Grand  
Jamia Mosque, Lahore



Bahria Jamia  
Mosque, Lahore



Qaddafi Stadium, Lahore



Supreme Court  
Museum, Islamabad



Shaukat Khaum  
Memorial, Lahore



Quaid-e-Azam  
Library, Lahore



This beautifully laid out property is built on 3052 sft. usable area. It offers incredible space, direct perspective on brilliant skies and loads of natural light. It comprises of five extravagant rooms with five en-suite restrooms.





# Salient Features



# Porch Pavers



- Car Porch Area 250 Sft.
- Deck Area 102 Sft.  
Designated for Outdoor Sitting



# Double Heighted Lobby



- Full Height Window with Tempered Ghani Glass



## China Verona Marble Finishing



- Marble Stairs with Ms/Wooden Railing



# Kitchen Fixtures



- Kitchen with Al Noor Laminated Sheets & Cherry Pink Granite Top



# Wardrobes & Doors



- Engineered Wood Semi Solid with Machine Pressed Polished Doors
- Al Noor Laminated Full Heighted Wardrobes



# Bathroom Fittings



- Porta Imported Fittings with Wooden Vanity Cabinet & Marble Top



# Open Terraces/Patio



- 1<sup>st</sup> Floor Open Terrace Area 120 sft.
- 2<sup>nd</sup> Floor Open Terrace Area 182 sft. with Nippon Textured Paint & Marble Flooring





# Floor Plans



# Ground Floor

**TOTAL COVERED AREA**  
**1216 SQFT**

1. LIVING/DINING	13'-6" x 28'-6"
2. BEDROOM	13'-3" x 20'-9"
3. BATH	6'-6" x 7'-9"
4. KITCHEN	9'-6" x 14'-9"
5. POWER	6'-3" x 4'-9"
6. PORCH	9'-7" x 13'-0"
7. DECK	10'-7" x 9'-7"

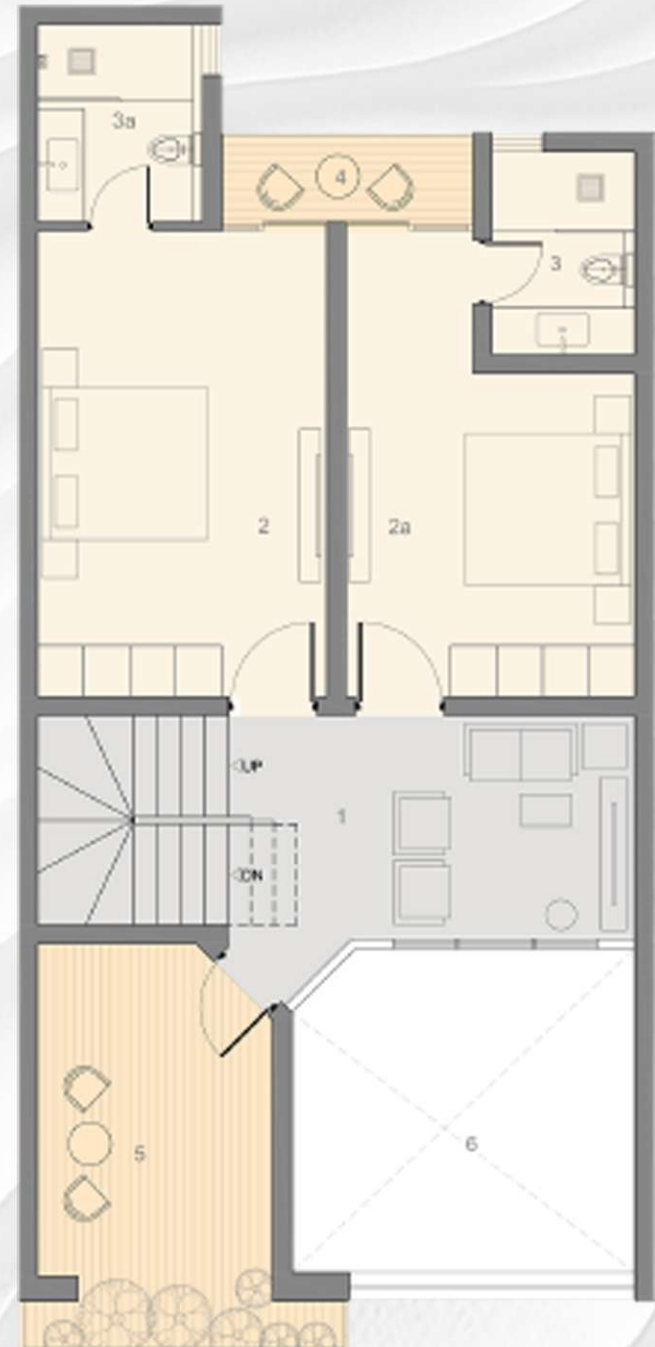




# First Floor

**TOTAL COVERED AREA**  
**1069 SQFT**

1. LOUNGE	15'-0" x 8'-9"
2. BEDROOM 01	11'-4.5" x 18'-6"
3. BEDROOM 02	11'-4.5" x 18'-6"
4. BATHROOM 01	5'-7.5" x 8'-0"
5. BATHROOM 02	6'-6" x 7'-9"
6. BALCONY	9'-10" x 3'-6"
7. TERRACE	9'-3" x 13'-0"

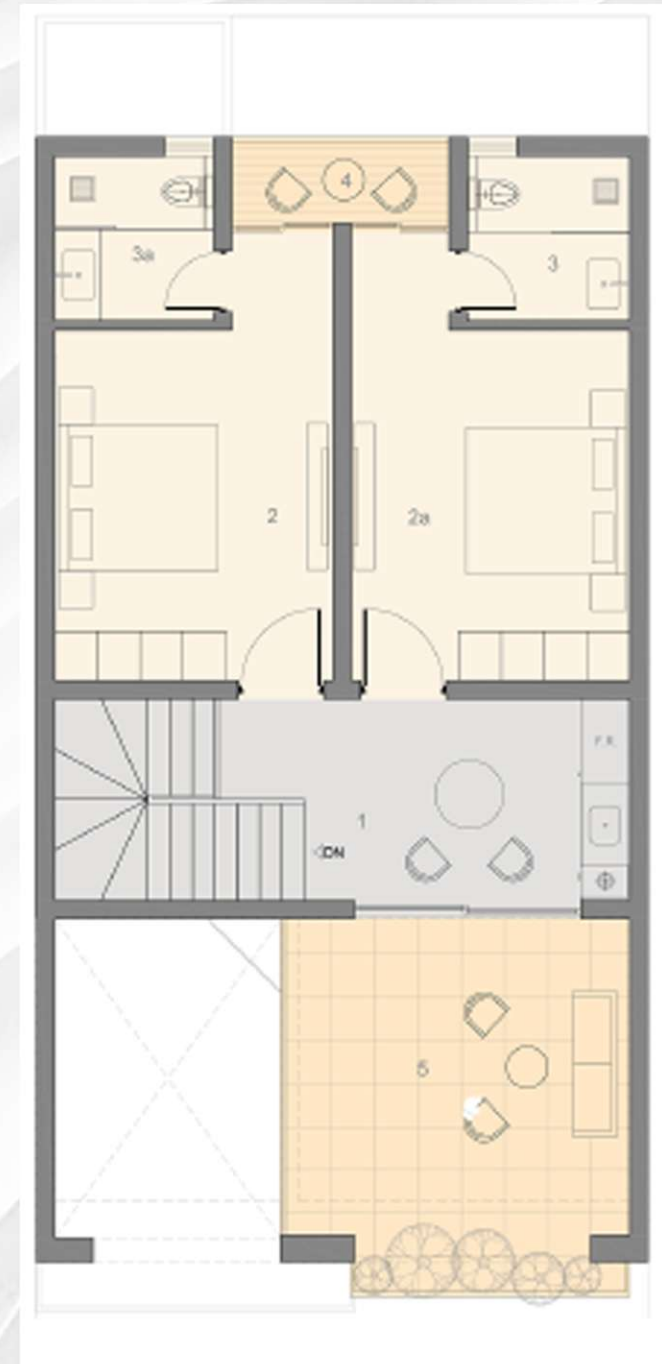




# Second Floor

**TOTAL COVERED AREA**  
**767 SQFT**

1. LOUNGE	15'-0" x 8'-9"
2. BEDROOM 01	11'-4.5" x 18'-6"
3. BEDROOM 02	11'-4.5" x 18'-6"
4. BATHROOM 01	6'-7.5" x 6'-9"
5. BATHROOM 01	6'-7.5" x 6'-9"
6. BALCONY	9'-10" x 3'-6"
7. TERRACE	14'-0" x 13'-0"





# 1.5 YEAR PAYMENT PLAN



Size	Marla	Villa type	Total Price	Down Payment (20%)	Quarterly Installments (5)	Payment on Possession (15%)
3052 sqft	07	05 Bedroom	36,900,000/-	7,380,000/-	4,797,000/-	5,535,000/-

\*T&C Apply: Premium is applicable on corner and park-facing units

## Booking Office Pakistan

2nd Floor Lake City  
Mall, Lahore.

Lake City Corporate Office,  
13-KM Raiwind Road, Lahore.

042-111-444-999

## Booking Office UK

South Kensington London, SW7 2HL

+44 80 0112 0377 | +44 7449 993399