



LAKE CITY  
LAHORE

# 12 MARLA VILLAS 1.5 YEAR PAYMENT PLAN





LIVING ROOM



KITCHEN



BEDROOMS



BALCONY



BATHROOM



# FLOOR PLAN

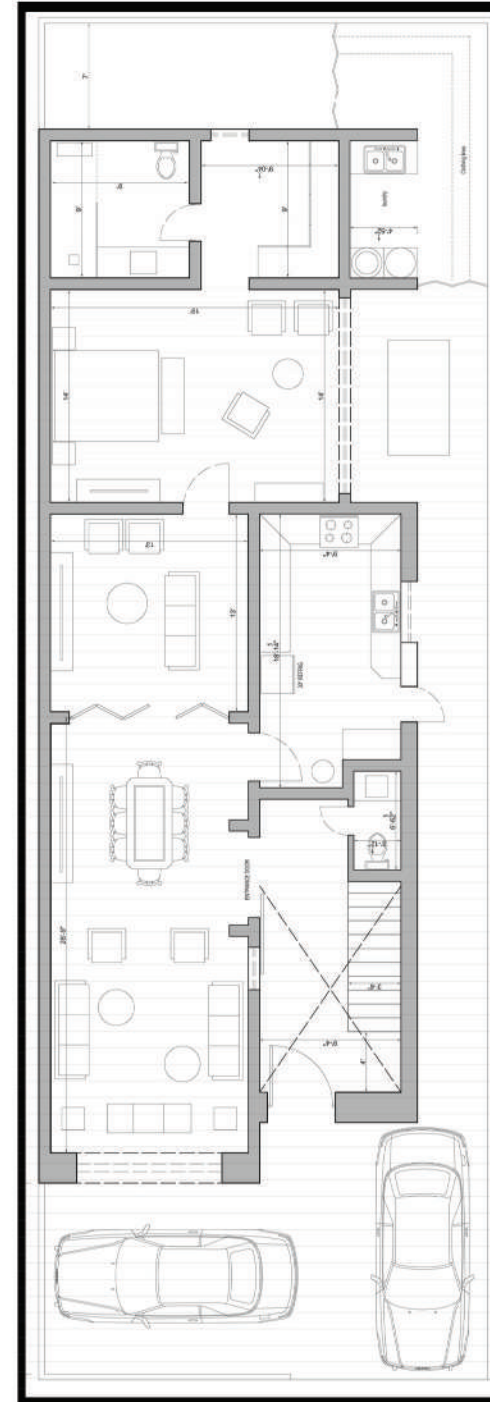
---

## GROUND FLOOR

### 12 MARLA VILLA

### LAKE CITY, LAHORE

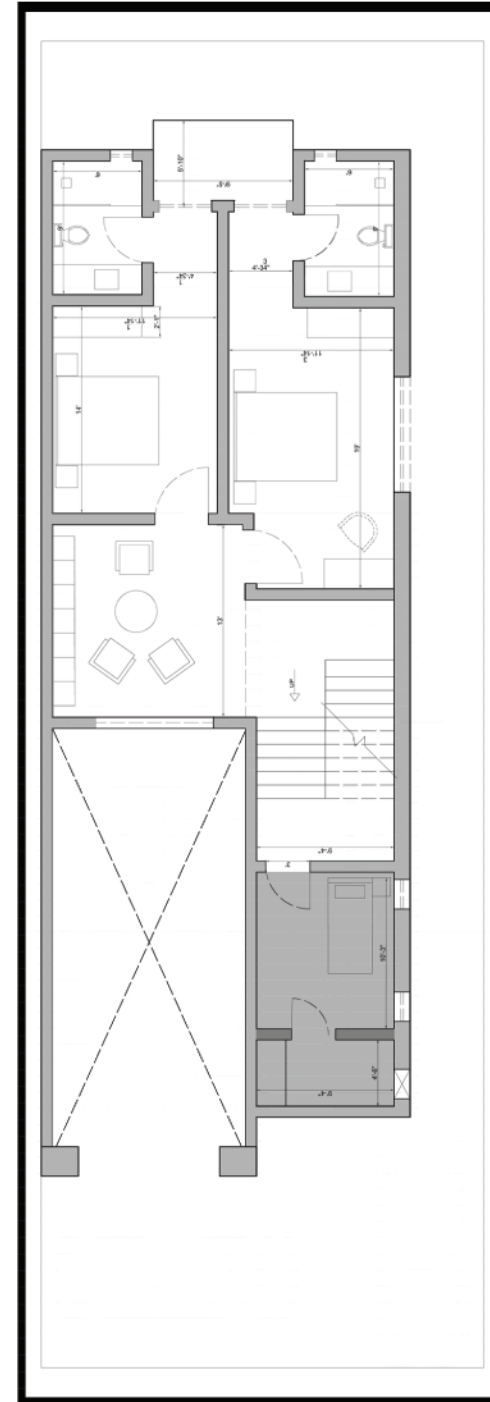
\* FLOOR PLANS ARE TENTATIVE AND SUBJECT TO SLIGHT VARIATIONS. MEASUREMENTS ARE APPROXIMATE.



# **FLOOR PLAN**

---

## **FIRST FLOOR**



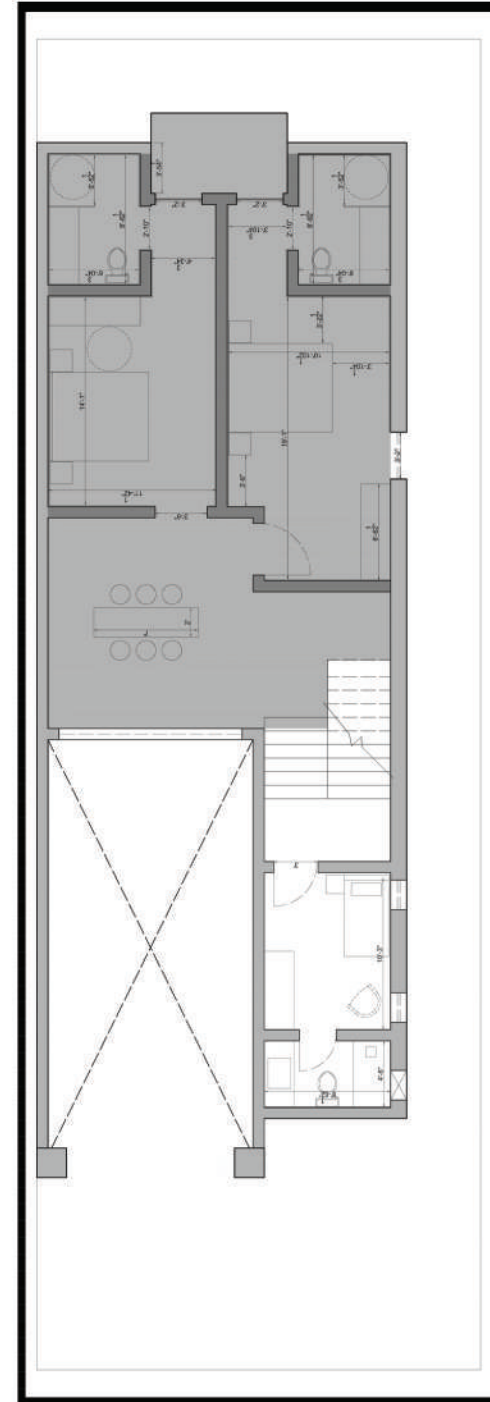
**12 MARLA VILLA**  
**LAKE CITY, LAHORE**

\* FLOOR PLANS ARE TENTATIVE AND SUBJECT TO SLIGHT VARIATIONS. MEASUREMENTS ARE APPROXIMATE.

# FLOOR PLAN

---

## MEZZANINE FLOOR



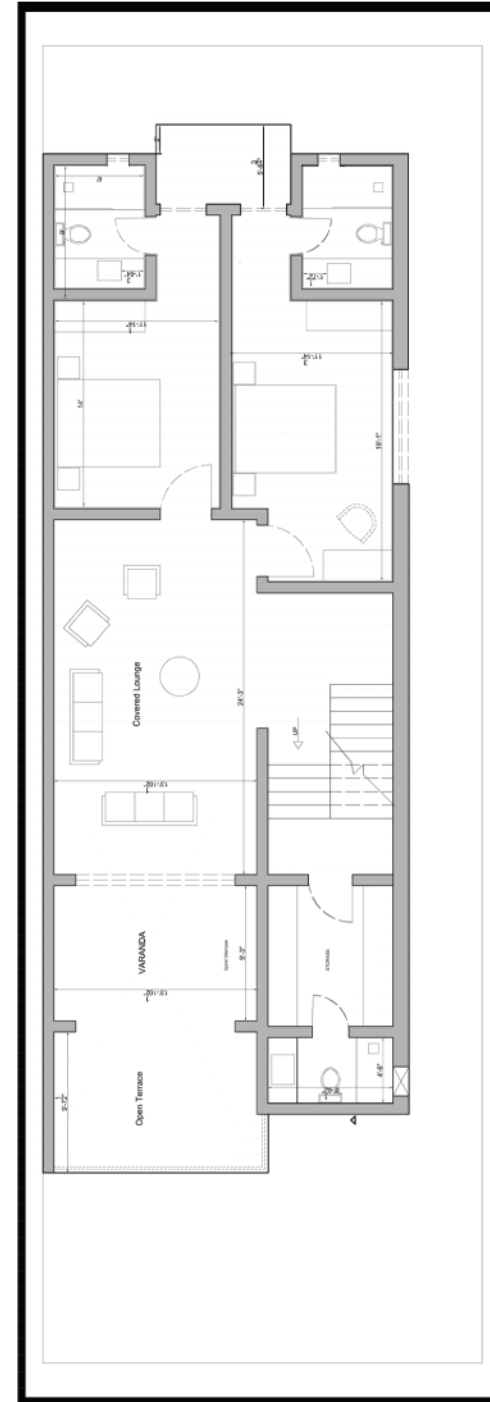
**12 MARLA VILLA**  
**LAKE CITY, LAHORE**

\* FLOOR PLANS ARE TENTATIVE AND SUBJECT TO SLIGHT VARIATIONS. MEASUREMENTS ARE APPROXIMATE.

# FLOOR PLAN

---

## SECOND FLOOR



**12 MARLA VILLA**  
**LAKE CITY, LAHORE**

\* FLOOR PLANS ARE TENTATIVE AND SUBJECT TO SLIGHT VARIATIONS. MEASUREMENTS ARE APPROXIMATE.



Size	Type	Total Price	Down Payment (20%)	Quarterly instalment(5) (pkr)	Possession (15%)
<b>12 Marla</b>	<b>Residential</b>	<b>66,000,000/-</b>	<b>13,200,000/-</b>	<b>8,580,000/-</b>	<b>9,900,000/-</b>

## NOTE :

- 10% WILL BE CHARGED ON SINGLE PREMIUM CORNER, PARK FACING & MAIN BOULEVARD UNITS.
- 15% WILL BE CHARGED ON DOUBLE PREMIUM CORNER / MB, PARK FACING / MB, & CORNER / FACING PARK UNITS.
- 5% DISCOUNT ON LUMP SUM PAYMENT.
- PRICES ARE SUBJECT TO CHANGE WITHOUT PRIOR NOTICE.
- APPLICABLE GOVERNMENT TAXES TO BE PAID BY APPLICANT.

## 12 MARLA VILLA LAKE CITY, LAHORE

\* FLOOR PLANS ARE TENTATIVE AND SUBJECT TO SLIGHT VARIATIONS. MEASUREMENTS ARE APPROXIMATE.