

# Model LT100



## WARNING



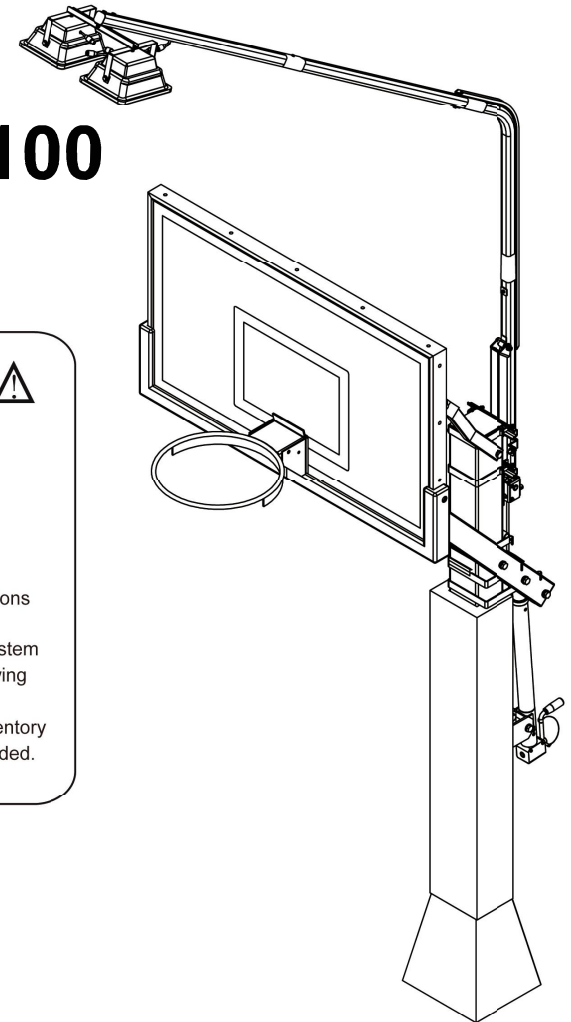
Failure to comply with any of the instructions may result in serious personal injury.

Failure to comply may also result in property damage.

Please heed all warnings and cautions to ensure your safety.

Do not attempt to assemble this system without carefully reading and following all instructions.

Begin by identifying and taking inventory of all parts using the parts list provided.



Keep this instruction manual in case you have to contact the manufacturer for replacement parts.

## SAFETY INSTRUCTIONS

### CAUTION

Owner/Purchaser must insure that all players have read these instructions and both know and follow these rules for the safe operation of the system.

To insure safety, DO NOT attempt to assemble this light system without following the instructions carefully. Proper and complete assembly, use and supervision, and full understanding of the instructions are essential for proper operation and to reduce the risk of accident or injury. A high probability of serious injury exists if this system is not installed, maintained, and operated properly.

Proper and complete assembly, use and supervision is essential for proper operation of the product and to reduce the risk of accident or injury.

Use caution when using this light system. Most injuries are caused by misuse and/or not following these instructions.

Only use parts provided by the manufacturer for installation as outlined in this manual as other parts may cause system to fail.

Installation of this product will require heavy lifting. (2) People in good physical condition are recommended for safe installation and assembly.

This is not an indoor light fixture.

Do not look directly into light fixture to avoid any damage to vision.

KEEP CHILDREN AWAY FROM THIS LIGHT FIXTURE.

Light should be unplugged and completely cool before you attempt to replace the fixture. Avoid direct contact of fingers with the fixture.

Do not operate light with broken pieces or missing safety guard.

Keep water and organic material away from system as this could cause failure from rust/corrosion. Check light system regularly for rust. If surface rust is found, remove the affected part and repaint with exterior enamel paint.

Retain this manual for future reference of operation, maintenance and parts information. The information in this manual is based on the latest information available at the time of publication. Your light system may have product improvements and options not yet contained in this manual. Manufacturer reserves the right to make changes at any time without notice or obligation.

Contact the manufacturer if technical assistance is required.

### WARNING

FAILURE TO FOLLOW THESE WARNINGS & INSTRUCTIONS MAY RESULT IN SERIOUS INJURY, DEATH, AND/ OR PROPERTY DAMAGE

Locate your light system away from potential dangers including trip hazards, high traffic areas, or where a vehicle may be in contact with the system.

To avoid serious injury, DO NOT locate the light system under a power lines that may come into contact with the system as it is raised. Power lines should not be present within a 20 foot radius of system.

If using a ladder during assembly, use extreme caution. Follow all warnings and cautions on the ladder carefully.

DO NOT CLIMB OR HANG on any part of the goal or light system. This includes the backboard, support braces and any part of the light system. The product is not designed for such use and property damage or personal injuries such as cuts, broken bones, nerve, spinal cord or brain injury or death could occur.

Do not use the system to lift/support anything. When adjusting the system height, keep hands/fingers away from moving parts. DO NOT ALLOW CHILDREN TO ADJUST SYSTEM.

Climate, corrosion, or misuse could result in system failure. Check system before each use for loose hardware, signs of rust and instability. If the rust has penetrated the steel, replace that part immediately. Repair before each use. Never play on damaged equipment.

Light fixture gets very hot. Unplug power supply and allow to cool before touching surface of fixture.

Do not assemble without the guard and keep light at least 36 inches from any sort of flammable material.

Never operate light around highly flammable liquids.

This light should never be in or near a wet surface. Never use near a swimming pool, hot tub or sauna, or near a standing body of water. Do not operate this light fixture in the rain

Always insert the plug into the outlet carefully.

## MAINTENANCE

Like any piece of hardware proper maintenance is required. Several factors such as the environment, organic materials, herbicides, pesticides, excessive use, or misuse can eventually cause the system to require periodic maintenance. Failure to do so could result in system failure, property damage, or even personal injury.

- a) Keep all organic materials (grass clippings, garbage, etc.) away from the Light System and basketball system to alleviate any chance of rust penetrating the powder coated finish.
- b) Clean the light post periodically with water and a soft cotton cloth. To properly clean the system components use a soft, non-abrasive cloth and water with a mild detergent. Do not use abrasive materials to clean as it could damage the powder-coated finish.
- c) If you see any signs of rust on the Light System or basketball system remove the loose paint, gently sand the area, and apply outdoor enamel gloss paint to the affected area.
- d) Never leave the Light System plugged in when not in use. When not in use disconnect the extension cord from the light, and store the extension cord indoors.
- e) Never use your Light System during rain, or after precipitation.

## ROUTINE SYSTEM INSPECTION

Before each use inspect the Light System for any signs of the following:

- Loose nuts and bolts
- All parts and components for excessive wear and tear
- Any signs of rust or corrosion

If replacement parts are needed, only replacement parts from the manufacturer should be used in the repair process. Use of other parts may cause the system to fail resulting in serious injury or death and will void the manufacturers' limited life time warranty.

## STEP 6

### CAUTION

Attaching the Light System to the post requires at least two capable adults.

### WARNING

When attaching the Light System to the main post, stay clear of all overhead power lines, electrical lines, telephone lines, and obstacles. Any contact between the Light System and any of these lines will result in severe and immediate danger.

First, attach the assembled light post to Mounting Brace #1 using (1) Hex Bolt M10x75mm #20, (2) Flat Washer #28, (1) Nylon Nut M10 #32.

Second, attach the belt of Winch #8 to the light post #2, using (1) Hex Bolt M8x55mm #18, (2) Flat Washer #27, (1) Nylon Nut M8 #31. **See the Tips.**

Third, assemble the Crank handle #9 and the Winch #8, like photo shows.

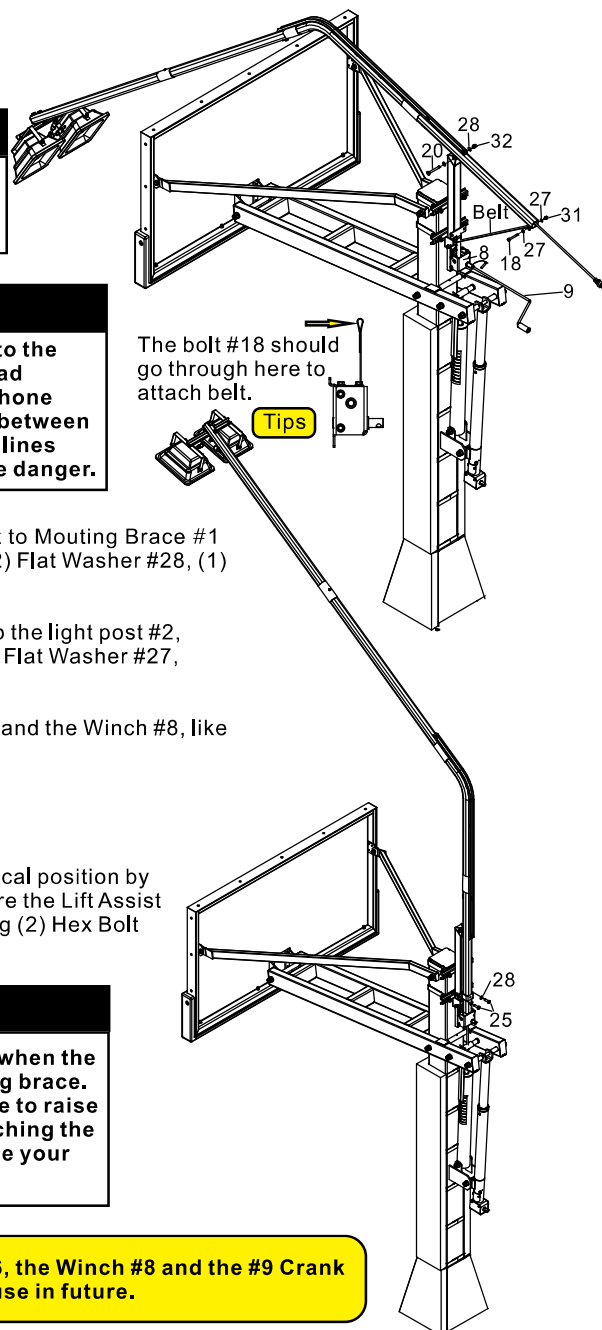
## STEP 7

Begin raising the light post into a vertical position by rotating the actuator handle #9. Secure the Lift Assist base #7 to Mounting Brace #1 by using (2) Hex Bolt M10x30mm #25, (2) Flat Washer #28.

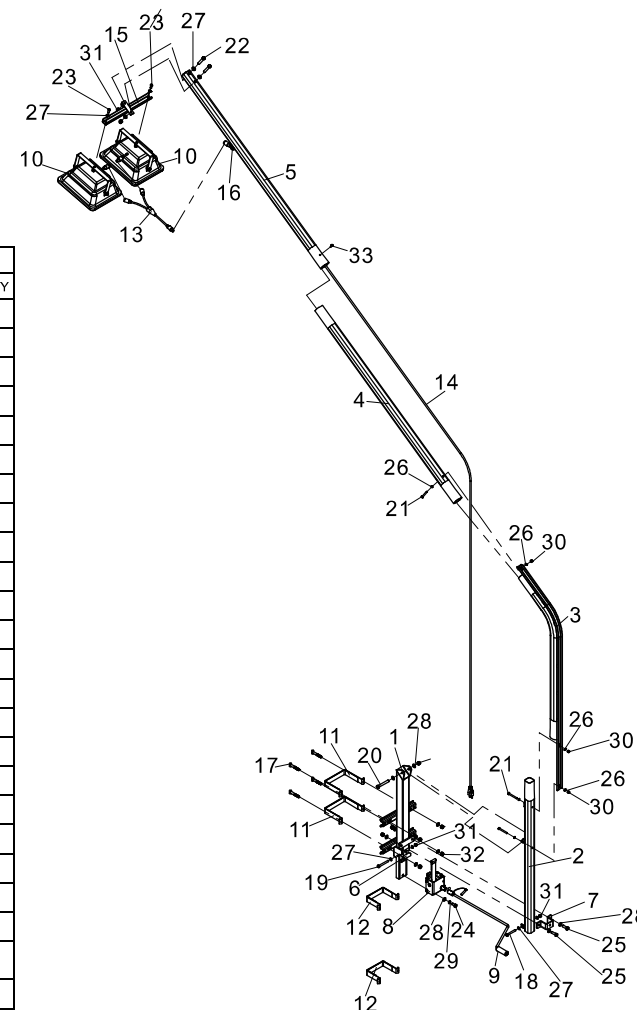
### WARNING

Stop rotating the actuator handle when the light post is touching the mounting brace. If you continue to rotate the handle to raise the light after the light post is touching the mounting brace, you could damage your system.

**Tips:** Remove the Nylon Sleeve #6, the Winch #8 and the #9 Crank Handle, and keep individually to use in future.



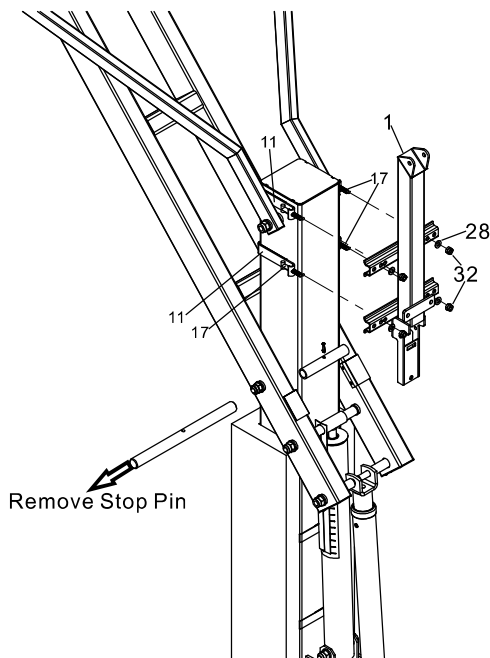
Part List		
#	Item	QTY
1	Mounting Brace	1
2	Light Post (Bottom Part)	1
3	Light Post (Angle Branch)	1
4	Light Post (Connect Part)	1
5	Light Post (Top Part)	1
6	Nylon Sleeve	1
7	Lift Assist Base	1
8	Winch	1
9	Crank Handle	1
10	LED Light Fixture 110V/50W	2
11	U Bracket 6"x6"	2
12	U Bracket 6"x8"	2
13	Light Connector 110V/100W	1
14	Electrical Cord 110V/50W*2	1
15	Light Post Bracket	1
16	Black Protective Ring	1
17	"T" Bolt M10x60mm	4
18	Hex Bolt M8x55mm	1
19	Hex Bolt M8x75mm	1
20	Hex Bolt M10x75mm	1
21	Hex Bolt M6x65mm	3
22	Hex Bolt M8x65mm	2
23	Hexagon Socket Button Head Screw M8x20mm	2
24	Hex Bolt M10x20mm	1
25	Hex Bolt M10x30mm	2
26	Flat Washer F6	6
27	Flat Washer F8	12
28	Flat Washer F10	11
29	Lock Washer F10	1
30	Nylon Nut M6	3
31	Nylon Nut M8	6
32	Nylon Nut M10	7
33	Self Tapping Screw	1
34	Spanner Band	1



### Note:

Please check the items according to part list before installation.

Item #11 and #12 is optional, pls choose one according to the post dimension.



## STEP 1

Lower down your basketball system to 7.5'.

Remove the stop pin before proceeding.

## STEP 2

Attach the Mounting Brace #1 to the rear of the main post using (2) properly sized U Bracket #11, (4) M10x60mm T Bolt #17, (8) Flat Washer #28 and (4) Nylon Nut M10 #32.

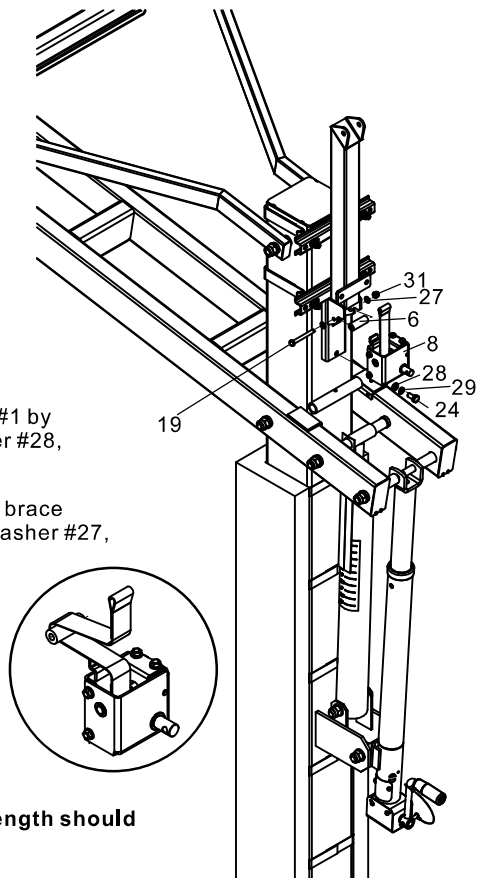
## STEP 3

Attach the Winch #8 to the mounting brace #1 by using Hex Bolt M10x20mm #24, Flat Washer #28, Lock Washer #29.

Attach the Nylon Sleeve #6 to the mounting brace #1 by using Hex Bolt M8x75mm #19, Flat Washer #27, M8 Nylon Nut #31.

**Note:**  
During this process, pull the belt of winch #8 out around the nylon sleeve #6, like the photo show.

**Note:**  
The belt of winch #8 should go out from right side like the photo show. And the length should up to 400mm.



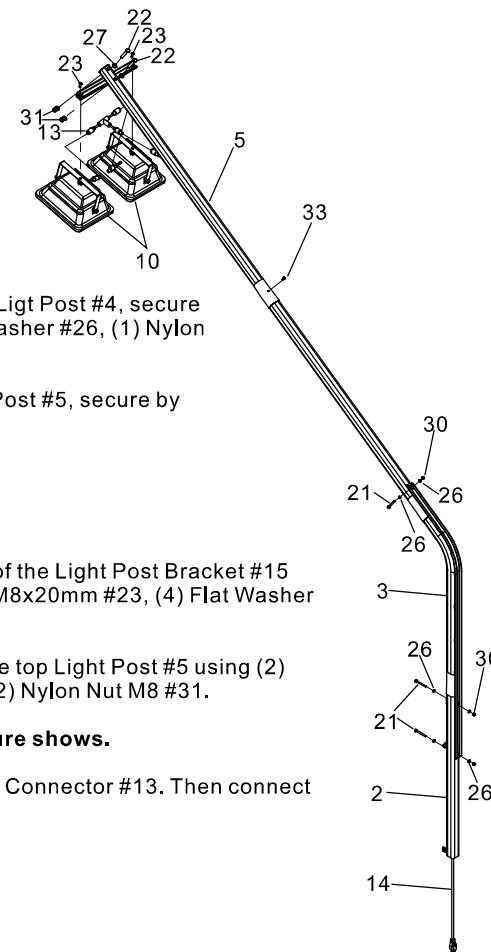
## STEP 4 Light Post Assembly

**Find a large area to assemble the four-piece light post.**

First, insert the Light Post #2 into the curved middle Light Post #3, secure by using (2) Hex Bolt M6x65mm #21, (4) Flat Washer #26, (2) Nylon Nut M6 #30.

Second, insert the curved light post #3 into the Light Post #4, secure by using (1) Hex Bolt M6x65mm #21, (2) Flat Washer #26, (1) Nylon Nut M6 #30.

Third, insert the light post #4 into the top Light Post #5, secure by using Self Tapping Screw #33.



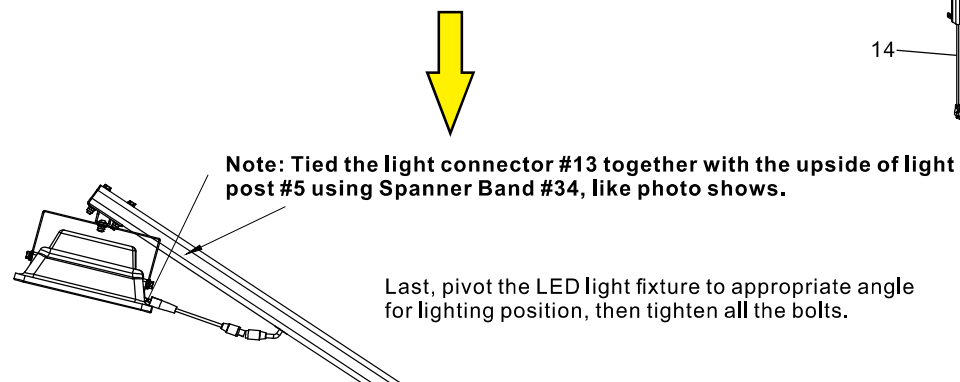
## STEP 5 LED Light Assembly

First, attach the (2) LED light #10 to both ends of the Light Post Bracket #15 using (2) Hexagon Socket Button Head Screw M8x20mm #23, (4) Flat Washer #27, (2) Nylon Nut M8 #31.

Second, attach the Light Post Bracket #15 to the top Light Post #5 using (2) Hex Bolt M8x65mm #22, (4) Flat Washer #27, (2) Nylon Nut M8 #31.

**Note: The direction should be as below picture shows.**

Third, connect the (2) LED light #10 to the Light Connector #13. Then connect light connector #13 to the electrical cord #14.



**Note: Tied the light connector #13 together with the upside of light post #5 using Spanner Band #34, like photo shows.**

Last, pivot the LED light fixture to appropriate angle for lighting position, then tighten all the bolts.