

2025 CENTRAL OREGON ECONOMIC PROFILE

INFO@EDCOINFO.COM
541.388.3236
705 SW Bonnett Way, #1000
Bend, OR 97702
edcoinfo.com

WELCOME TO CENTRAL OREGON

Where the commute is short and the views are endless

Central Oregon spans the sweeping high desert plateau and rugged mountains of Deschutes, Crook and Jefferson Counties. Nestled midway between San Francisco and Seattle, the region continues to shine as one of America's most dynamic small metropolitan markets.



Strong economic momentum

Over the past decade, Central Oregon has seen some of the highest sustained GDP, employment and population growth in the nation. In 2025, the Milken Institute once again placed the Bend–Redmond metro area among the top five Best-Performing Small Cities, highlighting its expanding high-tech sector, exceptional job growth, strong wage gains, and a resilient economy that continues to attract diverse industries and talent.

A magnet for talent and investment

Attracted by both striking natural beauty and urban-grade amenities, people and companies are flocking here. Deschutes County led Oregon in new investment dollars in 2023 and 2024, according to SmartAsset data.

Work–life balance redefined

Here, people achieve what many only dream of: real balance. Commutes are measured in minutes, not hours, and outdoor adventures

are practically your daily routine. It's no surprise that employees report higher satisfaction, while companies operate more nimbly and innovatively.

A local footprint with global reach

Though dominated by small and mid-sized enterprises, Central Oregon's brands are making waves worldwide, driven by bold startups, advanced manufacturers and a growing concentration of high-tech and outdoor recreation companies.

Central Oregon delivers an irresistible package: exceptional economic opportunity, a thriving entrepreneurial ecosystem, cutting-edge connectivity, and a lifestyle defined by proximity to nature. The region enjoys a high desert climate with abundant sunshine and mild, dry weather throughout the year. With less than 10.4 inches of precipitation annually, the area offers clear skies and ideal conditions for outdoor living.

Bend residents reflected a combination of relatively low unemployment (3.1%) and high income growth at 44.2% over three years. At the same time, work is accessible and flexible for many, with an average commute time of 16 minutes, while 26.9% work remotely.

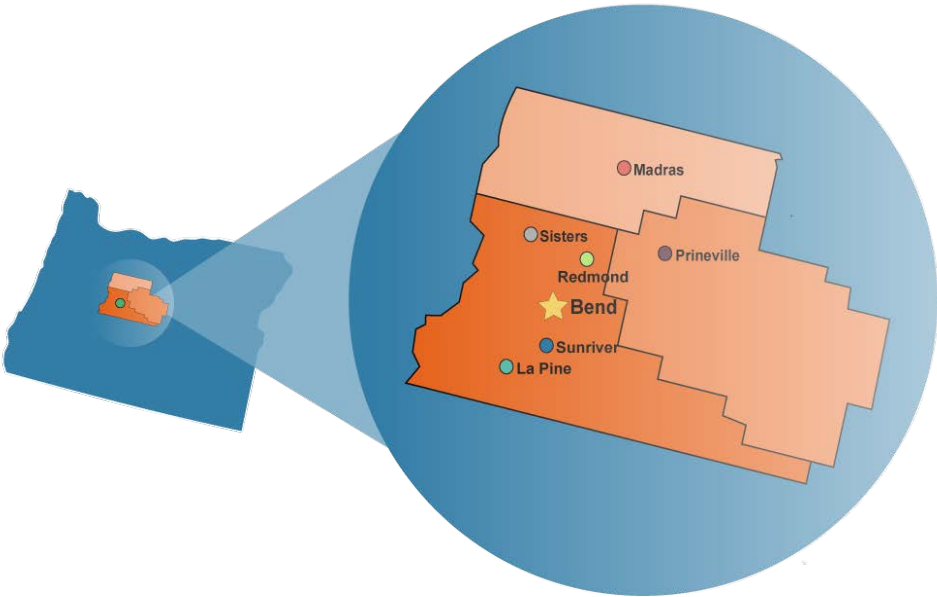
- [SmartAsset, 2025](#)

CENTRAL OREGON OVERVIEW



GEOGRAPHIC ACCESSIBILITY

An expanding regional airport provides convenient daily direct flights to 11 destinations, enhancing connectivity for both business and leisure travelers. To meet the region’s rising demand, the Redmond Municipal Airport (RDM) is set to begin a major terminal expansion in the summer of 2025.

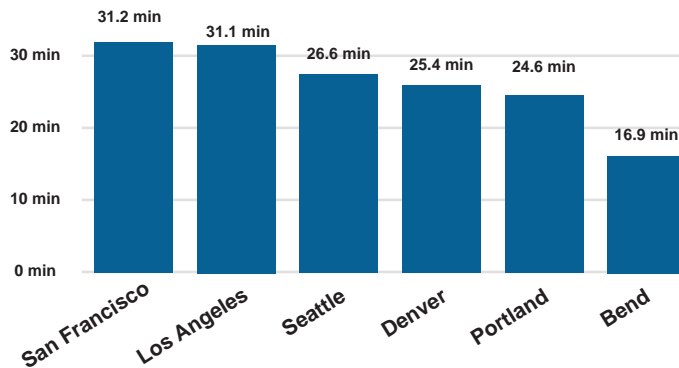


Central Oregon’s location at the intersection of key state highways allows for easy and scenic drives to the Willamette Valley, the Oregon Coast, Portland, Boise, and Seattle.

Regional Population: <small>(2024 estimates from PSU Population Research Center)</small>	260,425
Regional Labor Force: <small>(2024 estimates from Oregon Prospector)</small>	135,838
Median Household Income: <small>(2024 estimates from Oregon Prospector)</small>	\$79,420

TRANSPORTATION

AVERAGE COMMUTE TIMES



The Central Oregon average commute time is 24 minutes each way, saving the average worker nearly one work week per year.

Source: [Census.gov](https://www.census.gov) 2023



Source: [Redmond Municipal Airport](https://www.redmond-airport.com)

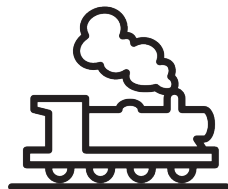
AIR

Redmond Municipal Airport (RDM) provides commercial air service with an average of 30 daily outbound flights to Burbank, Dallas, Denver, Las Vegas, Los Angeles, Phoenix, Portland, Salt Lake City, San Diego, San Francisco, and Seattle via five carriers (Alaska, American, Breeze, Delta, and United).



RAIL

Burlington Northern-Santa Fe (BNSF), Union Pacific (UPRR) and the City of Prineville Railway (COPR) provide direct connections for shipping to any market in the United States, Canada and Mexico.



FREIGHT

U.S. Highways 97 and 20 are two of the State's major trucking routes, with access to major metro areas with connections to Interstate 5 and Interstate 84.



TRAVEL TIME & DISTANCE BY ROAD



TRAVEL TIME BY AIR



CENTRAL OREGON AMONG THE FASTEST GROWING REGIONS

The Bend Metropolitan Statistical Area (MSA), which includes Deschutes, Crook and Jefferson counties, grew by nearly 7% between the April 2020 Census and July 1, 2022, adding close to 17,000 residents according to U.S. Census Bureau data. This growth reflects the continued appeal of Central Oregon, with Crook County standing out as the fastest-growing county in the state during that period.

Net migration remained strong in Deschutes County. In 2022, it saw a gain of 1,848 residents, based on IRS migration data. Of the 13,327 people who moved into the county, 5,598 came from other parts of Oregon, while 7,729 relocated from out of state. Oregon as a whole experienced a net loss of 6,896 residents during that same period, with most newcomers arriving from California (30,421) and Washington (19,487). Despite the statewide decline, the Bend metro area continues to grow steadily, fueled by both in-state and out-of-state migration.

4.1 million visitors are drawn to Central Oregon each year for its outdoor recreation, vibrant communities and high quality of life. Tourism serves as a gateway to discovering the region’s livability and business potential. Between 2010 and 2024, Central Oregon’s population grew by nearly 30%, driven by in-migration and a thriving economy. In response, communities across the region are investing in infrastructure, housing and workforce development to support sustainable growth.

Central Oregon continues to attract skilled talent and entrepreneurs, reinforcing its reputation as a dynamic place to live, work and build a business.

“Central Oregon’s economic growth is stronger than the state and nation overall. The primary reason is the high quality of life that attracts new residents. Faster population growth means local businesses can hire and expand at a faster rate due to the influx of working-age migrants and the growing labor force.”

Josh Lehner, Economist
Oregon Office of Economic Analysis



POPULATION CHANGES			
Area	Population Growth 2020-2024	Net Migration 2020-2024	Net Migration %
Oregon	30,005	45,937	153%
Counties			
Deschutes	10,359	10,048	97%
Crook	1,628	1,914	118%
Jefferson	945	951	101%

Source: [Population Research Center](#), 2020-2024



POPULATION TOTALS FOR CENTRAL OREGON

Area	2000	2010	2020	2024	% Growth 2010-2024
Oregon	3,421,399	3,837,300	4,237,256	4,267,261	11.2%
Crook County	19,184	21,020	24,738	26,366	25.4%
Deshcutes County	115,367	157,905	198,253	208,612	32.1%
Bend	52,029	76,740	99,178	104,089	35.6%
La Pine (not incorporated)		1,660	2,512	3,110	87.3%
Redmond	13,481	26,225	33,274	37,146	41.6%
Sisters	959	2,040	3,064	3,738	83.2%
Jefferson County	19,009	21,750	24,502	25,447	17.0%
MSA Total	153,560	200,675	248,536	260,425	29.8%

Source: [Population Research Center, PSU](#) 2000, 2010 & 2020 Census numbers are for April 1 of that year; 2024 data is for July 1 of that year.

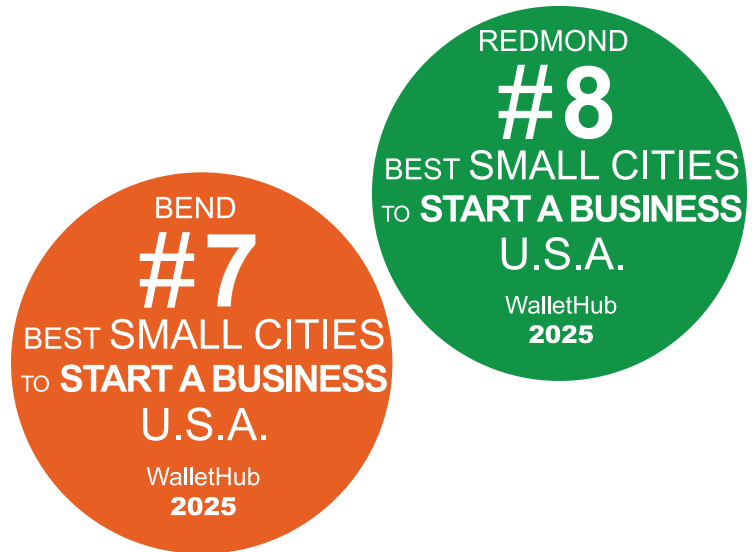
ECONOMIC DIVERSITY

Central Oregon's thriving and diverse economy makes it an ideal place to enjoy a fulfilling career. The Bend MSA offers a pro-business environment with incentives and supportive business finance options to encourage economic growth. Oregon allows corporate net operating losses to be carried forward for up to 15 years without a cap, which can meaningfully reduce business tax liability.

For businesses looking to relocate, Central Oregon has a reputation for welcoming new companies. The region offers a tight-knit community without sacrificing talent, education opportunities or quality healthcare. EDCO's network can help businesses streamline decisions when choosing a new home.

A driving force for Central Oregon's economic performance is a collaborative and inclusive entrepreneurial community. This is supported by the number of new business registrations, which have outpaced far larger cities.

The region is large enough to provide resources and access to capital that help new entrepreneurs get started, while still being small enough that those resources are interconnected to support businesses as they grow. Assets managed by EDCO include Central Oregon PubTalks and the largest Angel Conference in the Pacific Northwest, the Bend Venture Conference.



The Bend Venture Conference has been run in Bend for twenty years and brings entrepreneurs and angel investors together. Efforts to foster new local businesses also include regular Central Oregon PubTalks - networking events for people interested in entrepreneurship. These longterm efforts have borne fruit, with Bend ranking No. 17 for young firm employment share.

- [Most Dynamic Metros 2024](#), [Heartland Forward](#)

WORKFORCE DEVELOPMENT

Communities in Central Oregon are actively engaged in aligning workforce goals with economic development. Local education institutions and private sector employers continue to find innovative ways to improve skill attainment within the workforce. The area benefits from a strong and expanding education sector, with institutions like Oregon State University-Cascades, Central Oregon Community College, Hillsboro Aero Academy, and Leading Edge Aviation Flight School playing a crucial role in developing a skilled workforce.



Oregon State University

OSU-Cascades offers over 27 degree programs and recently launched

SnoPlanks Academy, a student-lead and operated snowboard company that delivers career development to every student.



CENTRAL OREGON community college

Central Oregon Community College (COCC) has campuses

in Bend, Prineville, Redmond, and Madras. Students can choose from over 25 Certificate and Associate options.



Central Oregon (Crook, Deschutes and Jefferson counties) stands out as the region's employment powerhouse, driving most of the employment growth seen in the East Cascades. The sub-region is projected to grow the fastest, with an 8.6% increase that will add nearly 9,900 new nonfarm jobs by 2033.

- [2023-2033 Industry Projections in the East Cascades](#),
[Oregon Employment Department](#)

HEALTHCARE

St. Charles Health System is the largest healthcare provider in the region, and is also the largest employer with over 5,100 employees across the tri-county area. The hospital offers a network of more than 100 clinics and specialty practices throughout the community. St. Charles has been recognized with numerous quality awards including:

- Recognized as a top performing health system for quality and efficiency by Thomson Reuters
- The American Heart Association Stroke Gold Quality Achievement Award
- March of Dimes Leading Practice Award

UTILITIES

Most of Central Oregon has been newly built in the past two decades, making the region's telecommunications infrastructure one of the Northwest's most technologically advanced. Businesses and telecommuters benefit from reliable fast data speeds and upload times.

MANUFACTURING EMPLOYMENT GROWTH 2010-2025

Percent Growth	
Oregon	12.1%
Bend MSA	67.8%

[Source: State of Oregon Employment Department](#)

MOVE

EDCO works to attract companies from outside the region to relocate to or expand in Central Oregon. This includes offering confidential site selection assistance, providing local market insights, helping businesses navigate local regulations, and coordinating with city, state and county partners. EDCO connects prospects with available workforce and incentives as well as key community partners. The goal is to bring traded-sector companies that generate new revenue and jobs to the region. By aligning business needs with local assets, EDCO helps companies find the right fit for long-term success.

Oregon offers more incentive programs to traded-sector businesses than Washington or California. Even without taking those incentives into consideration, Oregon is still a more cost-effective choice for doing business. Connect with EDCO for a detailed look at the available incentives, potential sites and business costs in Central Oregon.

BUSINESS COST COMPARISON

	Oregon	California	Washington
Avg. Electricity Rate (\$/kWh)	\$ 10.32	\$ 24.87	\$ 9.58
Avg. Natural Gas Rate (\$/kcf)	\$6.86	\$14.28	\$14.28
State & Local Sales Tax Rate	NONE	8.98%	9.47%
State Tax Competitiveness Index	#30	#48	#45

Source: [Tax Foundation 2025](#), [US Energy Information Association](#) (Average Industrial Price Natural Gas) 2025, [US Energy Information Association](#) (Electricity) 2021



MOVE

Case Study: Holy Kakow – Scaling Craft Food Production in Sisters



Founded in Portland in 2009, Holy Kakow has built a national and international reputation for its premium organic chocolate sauces and syrups, widely used by specialty coffee shops around the world. After nearly a decade of growing the company, Founder Wyatt Woods began exploring ways to relocate the business to better align with his family's long-term goals. The City of Sisters offered the lifestyle and community he was looking for, but moving an established food manufacturing operation presented significant logistical challenges.

Enter EDCO. Through direct support from its team, Holy Kakow received hands-on assistance with site selection, navigating the permitting process, identifying potential incentives, and coordinating

local resources. EDCO helped secure a location in the Sisters Business Park that would allow Holy Kakow to expand its operations and meet growing demand.

The relocation was completed in the early months of the COVID-19 pandemic, a time when many businesses were scaling back. With the added space and the support of EDCO and the local business community, Holy Kakow more than doubled its workforce in just a few months.

Today, Holy Kakow is actively working on new product lines and is part of a growing cluster of craft food producers in Sisters, a supportive, entrepreneurial ecosystem that fosters innovation and sustainable growth.

"While our move to Central Oregon may have started for personal reasons, it has allowed us to do more with our business than we thought possible. It has allowed us to hire amazing employees – the available talent here in Central Oregon has proven to be of the highest caliber and chocked full of integrity. Sometimes you feel like you can get lost in a big city. In Sisters we have been able to be part of a growing and nurturing business community."
- Wyatt Woods, President and Owner, Holy Kakow



START

Through its Venture Catalyst program, EDCO supports early-stage entrepreneurs and scalable startups. The organization provides mentorship, strategic planning guidance, advice on access to capital, and exposure to investor networks. Signature events, such as the Bend Venture Conference and PubTalk, are central in this effort. EDCO plays a key role in fostering a robust startup ecosystem in Central Oregon.

A driving force for our economic performance is a collaborative and inclusive entrepreneurial community. According to 2023 SmartAsset data, 28.96% of Deschutes County residents have small business incomes, and independent businesses generate about 13.02% of the income for the county.

Both Redmond and Bend made WalletHub's 2025 Top 30 list for best small cities to start a business at #7 and #8 respectively, based on an index of criteria that included business environment, access to resources and business costs. They were the only two Oregon cities to make it in the top 500 of 1,334 small cities ranked in the index.

BEST SMALL CITIES FOR STARTING A BUSINESS

	National Rank	Business Environment Rank
St. George, UT	1	2
Fort Myers, FL	2	69
Cedar City, UT	3	4
Bend, OR	7	1
Redmond, OR	8	3

[Source: WalletHub, 2025](#)

Bend is one of six small cities in the U.S. that ranked highest of all 1,334 cities for the most startups per capita.

- TheStreet, 2023



START

Case Study: Luno – Expanding Outdoor Innovation in Central Oregon

Luno, founded by Pete Ducato in Santa Barbara, California, is redefining vehicle-based adventure with the first-ever inflatable car mattress built specifically for camping. As the company expanded, Pete began looking for a new home base that aligned with both his business goals and outdoor lifestyle. Central Oregon quickly rose to the top of the list, and EDCO helped make the transition possible.

From the start, EDCO provided hands-on support through every stage of relocation. The team assisted with site selection, reviewed and negotiated lease terms and

connected Luno to key regional resources to help ease the move. Beyond logistics, EDCO delivered strategic value through mentorship and exposure.

Luno was invited to present at Central Oregon PubTalk, a high-visibility event for emerging companies. EDCO's Venture Catalyst Director and team provided pitch coaching to help refine the company's story and maximize its impact on stage. In addition, Pete received ongoing guidance from EDCO staff as he navigated the local business landscape and prepared for future growth.

Now headquartered in Bend, Luno is thriving in a region that embraces innovation, entrepreneurship and the outdoor industry. With EDCO's ongoing support, Luno is positioned to keep scaling and expanding its impact in the outdoor recreation market.



GROW

EDCO plays a vital role in supporting the growth and success of companies across the region. For existing businesses looking to expand, EDCO provides tailored, hands-on assistance to help them scale effectively and sustainably. This includes guiding companies through the permitting process, helping them recruit skilled talent, identifying and accessing local and state incentives, and securing suitable sites for expansion. With deep knowledge of the region and strong connections across both public and private sectors, EDCO streamlines the often complex steps that accompany business growth.

Beyond logistical support, EDCO serves as a long-term strategic partner, committed to the sustained success of companies throughout Central Oregon. The EDCO team stays engaged well beyond the initial project, offering continued access to resources, networking

“Traded-sector businesses play a pivotal role in stimulating economic growth by infusing new capital into the local economy, ultimately creating a ripple effect that supports local governments, retail, service, and utility providers. As the backbone of Central Oregon’s economic stability, these employers have been instrumental in driving employment growth across the region.” - Jon Stark, CEO, EDCO

opportunities and industry insights that help businesses adapt to changing markets and conditions. Whether a company is entering new markets, adding new product lines or simply scaling up to meet demand, EDCO is there to ensure these businesses remain competitive and rooted in the region’s economic landscape. Through this ongoing collaboration, EDCO fosters a thriving business community that contributes to the resilience and diversity of the Central Oregon economy.



GROW

Case Study: Serán Bioscience – Powering High- Growth Biotech in Bend

serán

Serán Bioscience, a cutting-edge pharmaceutical development and manufacturing company headquartered in Bend, has become one of the most active and fast-growing players in Central Oregon's biotech ecosystem. With multiple expansion projects across the region, Serán stands out as the company with one of the highest number of distinct growth initiatives supported by EDCO.

From permitting support to coordinating Enterprise Zone (Ezone) incentives for several new facilities, EDCO has worked closely with Serán's leadership through every phase of their expansion. The collaboration has helped

the company continue building advanced infrastructure while maintaining momentum in a highly regulated, technical field.

In addition to development support, EDCO facilitated connections with key federal partners, including coordinating communication with the office of Oregon senators. This has helped Serán stay engaged with relevant policy conversations and federal opportunities.

Serán's Founder and CEO, Dan Smithey, is also an active participant in EDCO's Business Roundtable Group, an initiative that brings together CEOs from growing companies across the region to share insights, collaborate and strengthen the local business environment.

As Serán continues to grow, EDCO is currently working with the company to develop a customized workforce training program focused on technical and operator-level roles, helping ensure that local talent is prepared to meet the demands of their high-tech manufacturing.



FOUNDATIONS OF CENTRAL OREGON'S ECONOMY

ADVANCED MANUFACTURING

Central Oregon is home to a variety of businesses in advanced manufacturing, which produce essential products and play a crucial role in the supply chain for various original equipment manufacturers (OEMs) in industries such as aviation and aerospace, brewing and distilling, specialty food processing, and automotive. Local advancements include both additive and subtractive machining of metals and plastics, advanced welding and metal fabrication, specialty metals casting, and the development of specialized machinery and equipment. Notable employers in this industry include BASX, Epic Aircraft, JELD-WEN Windows and Doors, and Keith Manufacturing.

Aviation/Aerospace

The production of light aircraft in Central Oregon spans back more than 30 years. Composite (carbon fiber) fabrication and innovation in aircraft are the region's specialty, offering a cluster of world-class talent and capabilities. Some of the most successful flight training programs in the country are located in the area, with both fixed-wing and helicopter flight schools, including Leading Edge, Hillsboro Aero Academy and Central Oregon Community College, which serve the global industry.

Building Products

After more than 100 years and considerable change across the industry, the building products sector remains Central Oregon's largest traded-sector employer. Businesses in this sector compete and win on a global scale, innovating and automating as leaders in their respective sub-industries, including wood doors and windows, mouldings, cabinetry, and furniture. The region's largest manufacturer and second-largest private employer, Brightwood Corporation, is based in Madras, with operations in Redmond, Culver and Prineville. The company has been growing in Central Oregon for over half a century.



HIGH TECHNOLOGY

Central Oregon's high technology sector is broad and growing, encompassing software development, electronics manufacturing, data centers, and alternative energy. A large and growing number of tech companies now operate in the region, with a particularly strong presence in software. Many firms have established headquarters in Central Oregon, drawn by the region's livability, talent pipeline and business-friendly environment.

Prineville has emerged as a data center hub, anchored by Meta's first and largest data center campus, an expansive site comprising 11 buildings totaling approximately 4.6 million square feet. Central Oregon's appeal for data infrastructure includes access to affordable industrial land, low utility costs, a dry climate ideal for cooling efficiency, and globally competitive tax incentives. With multiple telecom carriers and an expanding technology ecosystem, the region continues to attract investment and talent in high-tech industries.



LIFESTYLE PRODUCTS

Brewing and Distilling

Central Oregon is home to a diverse brewing and distilling community, ranging from small craft breweries to some of the most well-known producers in the state. Bend, in particular, is recognized nationally for its high concentration of craft breweries and its active beer culture.

The region also supports a growing number of craft cideries and distilleries, totaling more than a dozen operations. Among them, AVID Cider stands out as Oregon's second-largest cider producer, earning statewide recognition. Crater Lake Spirits is a prominent distillery in the area and a key player in Oregon's craft spirits market.

Together, these businesses contribute significantly to Central Oregon's reputation as a leading hub for quality and innovation in craft beverages. Bend is often cited in national media as one of the top beer destinations in the U.S., contributing to the local economy and tourism.

Outdoor Gear and Apparel

Central Oregon's outdoor gear and apparel sector reflects the region's natural assets and active lifestyle, with businesses spanning sub-sectors like rock climbing, water sports, hydration, hiking, backpacking, outerwear, mountain and road biking, recreation vehicles, and even outdoor-focused software. This diversity has created a vibrant ecosystem of companies ranging from early-stage startups to established global brands.

The region plays a central role in shaping the outdoor industry statewide. It is home to the Oregon Outdoor Alliance (OOA) and Oregon's Office of Outdoor Recreation—both of which foster industry collaboration, growth and advocacy. Bend Outdoor Worx, the nation's first dedicated outdoor industry startup accelerator, offers early-stage companies access to capital, mentorship and exposure, helping turn bold ideas into market-ready products.

DESCHUTES
BREWERY



10 BARREL
BREWING CO

humm[®]
KOMBUCHA

bS BlackStrap

 **Hydro Flask**[®]



BOW
BEND OUTDOOR WORX

MANAGEMENT OF COMPANIES AND ADMIN

A growing number of firms that manage operations and deliver professional services to clients well beyond the region call Central Oregon home. This sector includes a wide range of specialties including engineering, architecture, accounting, human resources, recruitment, publishing, and administrative support, providing essential infrastructure for businesses across industries.

The region's creative, marketing and advertising sub-sectors are particularly strong, supported by a deep talent pool and a culture of innovation. Companies headquartered in Central Oregon increasingly serve national and international clients, leveraging remote work trends and quality-of-life advantages to attract and retain skilled professionals in administrative and corporate management roles.

SCIENTIFIC

Central Oregon's bioscience sector is a rapidly-expanding pillar of the regional economy, producing everything from titanium implants to cutting-edge drug research. The industry has sustained double-digit year-over-year employment growth for nearly a decade, driven by innovation, advanced manufacturing and a strong pipeline of technical talent.

The region has become a magnet for world-class scientific and engineering professionals, helping local companies compete globally in pharmaceuticals, medical devices, diagnostics, and contract development and manufacturing. At the center of this growth is Lonza, a Swiss-based pharmaceutical and biologics company and the region's largest bioscience employer. Originally founded as Bend Research, Lonza has completed several major expansions in Central Oregon, reinforcing its role as one of the state's most significant players in drug development and delivery technologies.

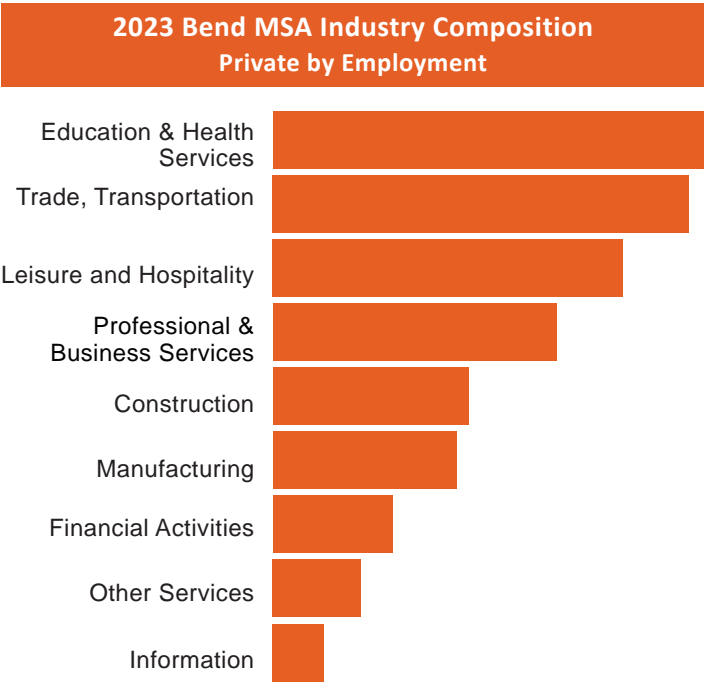
Lonza

ThermoFisher
SCIENTIFIC

serán



TOP EMPLOYERS

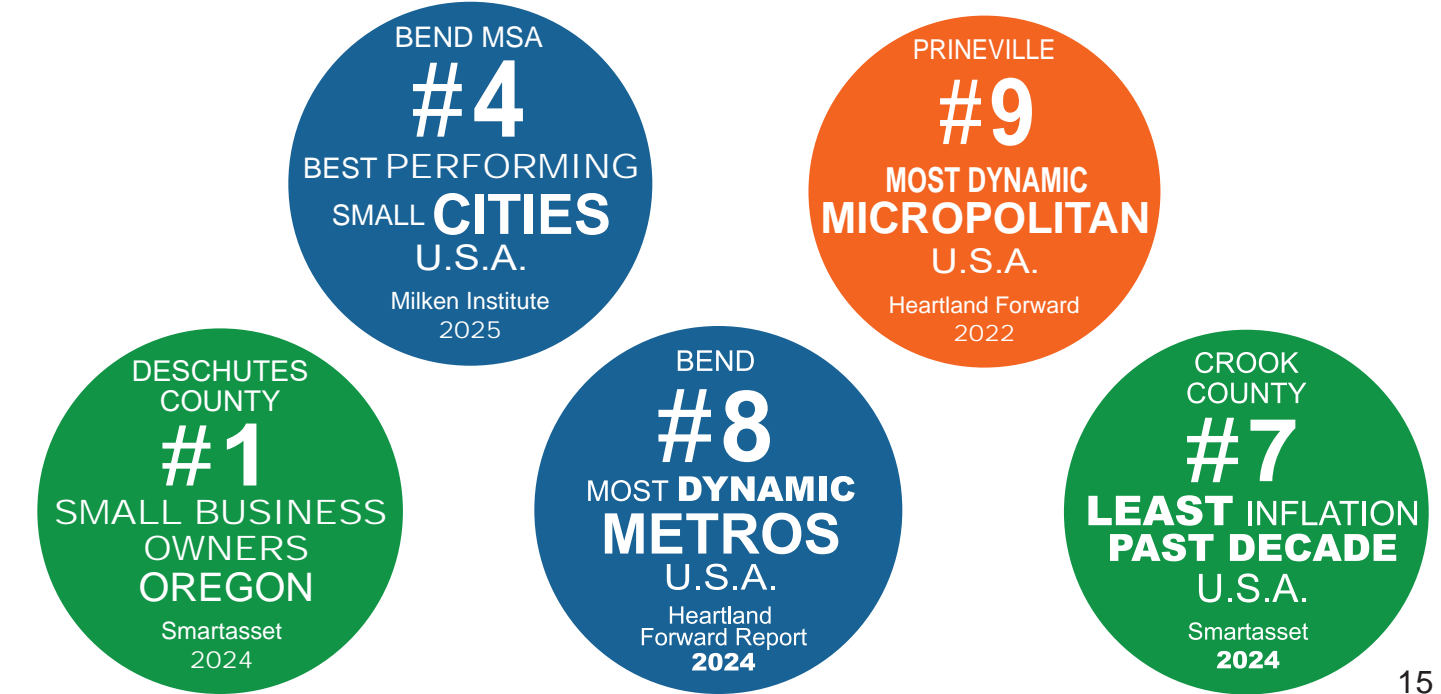


Source: Oregon Employment Department Geocoded 2023 QCEW

Bend-Redmond’s robust labor market is a key factor in its continued success, with five-year job growth ranking 14th and five-year wage growth placing fifth among small cities. The region’s technology industry is flourishing, with significant contributions to Bend’s high-tech GDP from software publishing, which has risen an impressive 40.3% since 2018.

Rank		2025 Central Oregon Largest Employers (Private)	Employees	
2025	2024		2025	2024
1	1	St. Charles Health System (regional)	5,188	4,791
2	4	Bright Wood Corporation (regional)	1,150	975
3	2	Mt. Bachelor	1,094	1,117
4	8	BASX Solutions	1,060	661
5	3	Les Schwab Headquarters & Tire Centers (regional)	1,026	985
6	6	Sunriver Resort	975	950
7	5	Safeway (includes Albertsons) (regional)	937	964
8	7	Summit Medical Group (regional)	754	736
T-9	NL	Almost Family, LLC	600	400
T-9	10	Meta Platforms - Facebook Data Center	600	600
11	9	McDonald's (regional)	564	611
12	11	Fred Meyer (regional)	529	582
13	12	Epic Aircraft	510	455
T-14	16	Costco	463	388
T-14	15	Mosaic Medical (regional)	463	388
16	13	Lonza, formerly Bend Research	427	441
17	14	Black Butte Ranch	400	390
18	19	PCC Structurals	330	328
19	20	Central Oregon Radiology Associates (CORA)	328	295
20	18	BestCare Treatment Services	322	331

NL = Not Listed | T = Tied



LIFESTYLE

Living in Central Oregon means embracing a lifestyle where outdoor adventure and small-town charm go hand in hand. The region is a playground for nature lovers. There are more than 600 miles of trails for hiking, biking, off-highway vehicles (OHVs), and horseback riding. Two major ski areas, Mt. Bachelor and Hoodoo, offer everything from downhill skiing to snowshoeing and Nordic trails. With over 30 golf courses, the area attracts both casual players and pros looking to tee off against a stunning mountain backdrop.

Beyond the trails and slopes, Central Oregon is home to a thriving food and beverage scene. Bend alone boasts more than 30 craft breweries, alongside a growing number of distilleries and cideries. Restaurants reflect the area's diversity, with options ranging from locally sourced fine dining to food trucks serving global flavors. The culinary culture is matched by a vibrant arts and entertainment scene. The Hayden Homes Amphitheater hosts major concerts throughout the summer. Local galleries, theaters and seasonal festivals add to the cultural richness of the region.

Life here strikes a balance between outdoor activities and community engagement. You can spend your morning fly fishing or trail running, then head downtown for an art walk or a live show. The communities in Deschutes, Crook and Jefferson counties are known for their friendly pace, innovative spirit and easy access to natural beauty. Whether you're raising a family, growing a business or simply looking to make the most of each day, Central Oregon offers a lifestyle that is both active and deeply rewarding.

"Central Oregon enjoys a truly collaborative environment. Everyone is not only supportive of each other, but excited to see one another grow. We share the same trails, rivers and slopes and ultimately share a similar vision to help the region succeed."
- Scott Allan, Interim CEO, [Puffin Drinkwear](#)



ABOUT EDCO

Economic Development for Central Oregon (EDCO) is a non-profit corporation supported by private and public members and stakeholders. Our mission is to create a diversified local economy and a strong base of middle-class jobs in Central Oregon.

EDCO connects businesses to Central Oregon’s growing industry clusters, including advanced manufacturing, bioscience, outdoor products, technology, natural foods, and consumer goods. The organization links companies to a wide range of resources, such as local supply chain connections, talent acquisition, incentives, business finance, market intelligence, and more. EDCO also supports companies in navigating the regional and local real estate market, as well as infrastructure and permitting processes.

2024/25 FISCAL YEAR RESULTS

MOVE EDCO Move projects for 2024/25 fiscal year resulted in four companies moving to the region, creating an anticipated 20 jobs and \$8.4M in capital investment.

START EDCO Start projects for the 2024/25 fiscal year resulted in 18 companies achieving significant milestones with EDCO’s support, such as securing financing (equity or debt), obtaining a grant, hiring key talent, completing incorporation, or achieving another measurable advancement. These efforts resulted in the anticipated creation of 62 jobs and \$36.8M in equity investment.

GROW EDCO Grow projects for 2024/25 fiscal year resulted in ten companies reaching milestones in growing their business, such as increasing staffing, scaling production, moving into a larger facility, or otherwise demonstrating measurable operational growth, adding an anticipated 180 jobs and \$63.2M in capital investment.

EDCO’s RESULTS			
Fiscal Year	Companies	Jobs	Capital Investment
2024/25	32	262	\$108M
2023/24	29	295	\$35M
2022/23	36	175	\$53M
TOTALS	97	732	\$196M

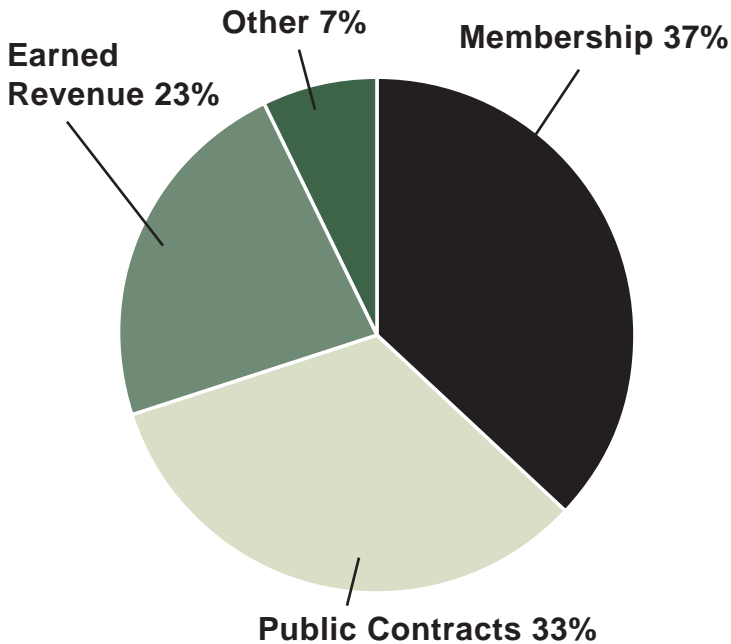
RESOURCES

- [Carl Riccadonna, Oregon Office of Economic Analysis](#)
- [Beacon Appraisal Group, Beacon Report and Market Overview](#)
- [Compass Points Commercial and Industrial Market Report](#)
- [Central Oregon Economic Indicators \(OED\)](#)
- [Statewide Economic Data](#)
- [Redmond Airport Flight Statistics](#)
- [Deschutes County Permits](#)
- [Crook County Permits](#)
- [Jefferson County Permits](#)

ADDITIONAL INFORMATION AVAILABLE AT EDCOINFO.COM

- Upcoming networking events, luncheons, conferences, and more
- Current comprehensive data for Central Oregon
- Success stories from regional businesses
- Business news on EDCO’s blog
- Membership listings
- Business support and relocation resources
- Entrepreneurial and startup resources
- Community and professional development resources

EDCO FUNDING SOURCES



EDCO PLATINUM MEMBERS:

[BendTel](#)
[Cascade Disposal](#)
[Cascade Natural Gas](#)
[Central Oregon Community College](#)
[City of Bend](#)
[City of Madras](#)
[City of Prineville](#)
[City of Redmond](#)
[City of Sisters](#)
[CMIT Solutions](#)
[Combined Communications](#)
[Crook County](#)
[Deschutes County](#)
[First Interstate Bank](#)
[Jefferson County](#)
[Mid Oregon Credit Union](#)
[OSU-Cascades](#)
[Pacific Power](#)
[PacificSource](#)
[Schwabe, Williamson & Wyatt](#)
[Sensiba](#)
[St. Charles Health System](#)
[TDS Telecom](#)
[US Bank](#)



1,618

Current total of new jobs projected by traded-sector companies that have collaborated with EDCO and are looking to move, start or expand their businesses in Central Oregon.



\$1.76B

Total new taxable capital investments projected by traded-sector companies that have collaborated with EDCO and are looking to move, start, or expand their businesses in Central Oregon.



\$14M

Total awarded to participating startups at the Bend Venture Conference, and growing.

EDCO CONTACT INFORMATION

Regional Office (Bend)	Redmond	Prineville/Crook County	Sisters	Sunriver/La Pine	Jefferson County
CEO: Jon Stark	Director: Steve Curley		Director: Eric Strobel	Director: Patricia Lucas	Director: Brenna Fuls
Director: Don Myll	411 SW 9th Street	Director: Kelsey Lucas	520 E Cascade Street	16345 Sixth Street	125 SW E Street
705 SW Bonnett Way	Ste. #203	PO Box 153	Sisters, OR 97759	La Pine, OR 97739	Madras, OR 97741
Ste. #1000	Redmond, OR 97756	Prineville, OR 97754	541.410.8630	248.693.3049	541.325.0315
Bend, OR 97702	541.923.5223	541.213.3169			
541.388.3236					

EDCO

MOVE
START
GROW

