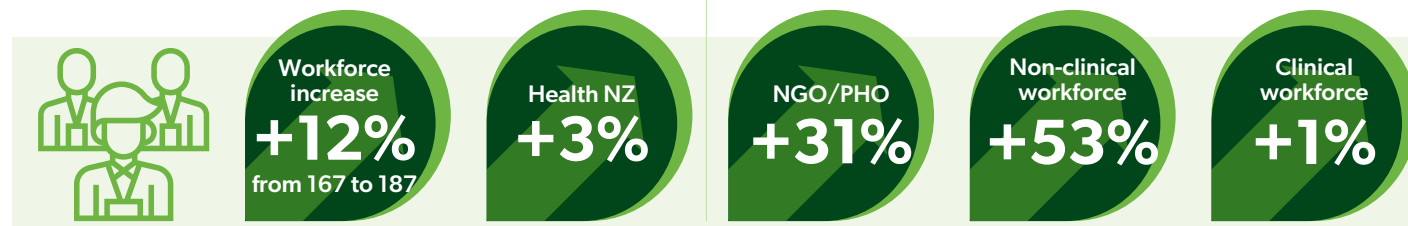


Asian national overview

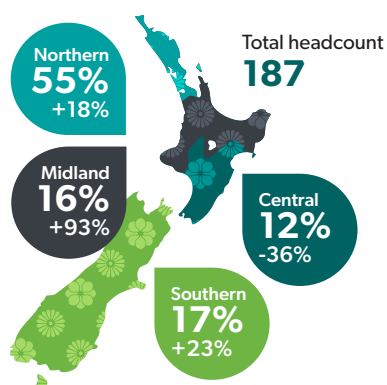
This Asian national overview presents data related to the Asian workforce who work in infant, child, and adolescent mental health and alcohol and other drug (ICAMH/AOD) services, funded by Health NZ. It also includes population and service access data for Asian pēpi, tamariki, and rangatahi aged 0–24. For 0–19 data, data definitions and data references, please see main report.

WORKFORCE DATA

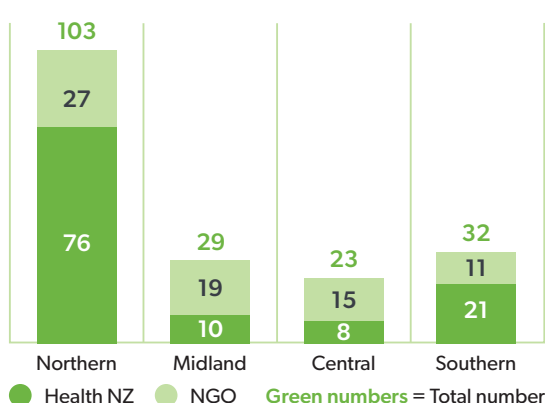
Asian workforce data by headcount (2022 - 2024)



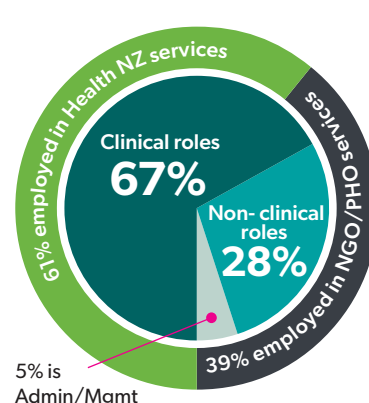
Regional share of Asian workforce in 2024 and change since 2022



Asian workforce headcount by region and service type (2024)

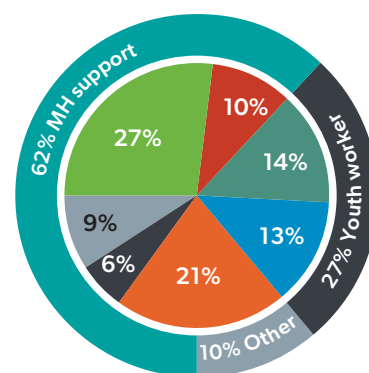
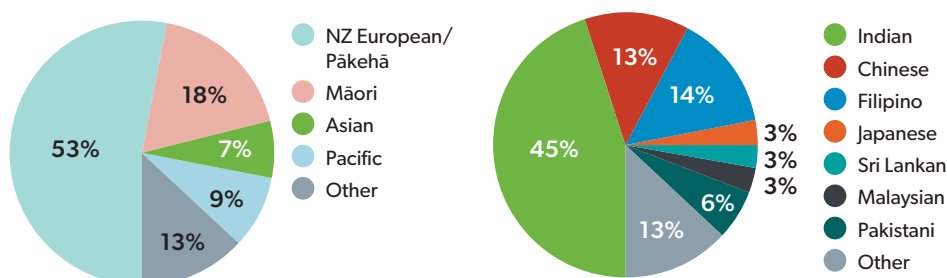


Asian workforce by service and role type (2024)



Asian workforce by ethnicity (2024)

Asian workforce made up 7 % of the total workforce

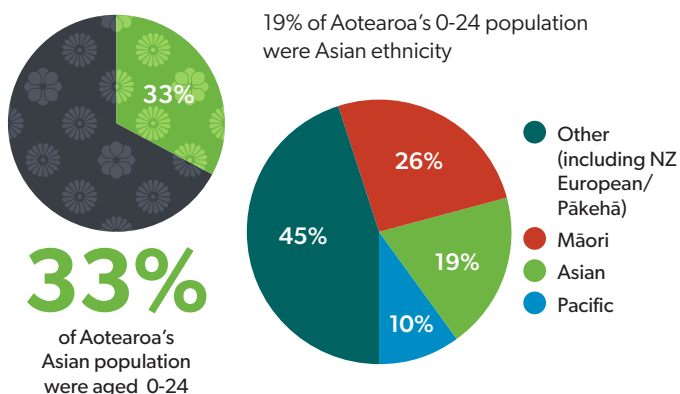


Outer ring:
Non-clinical roles (28% of total)
Inner circle:
Clinical roles (72% of total)

- | | |
|--|---|
| ● Nurse | ● Social worker |
| ● OT | ● AOD practitioner |
| ● Psychiatrist | ● Other |
| ● Psychologist | |

POPULATION DATA

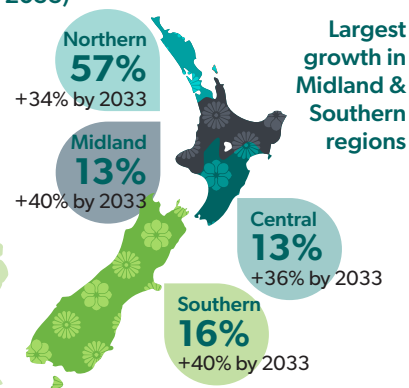
Asian population data for those aged 0-24 (2023)



Asian population projection data for those aged 0-24 (2023-2033)

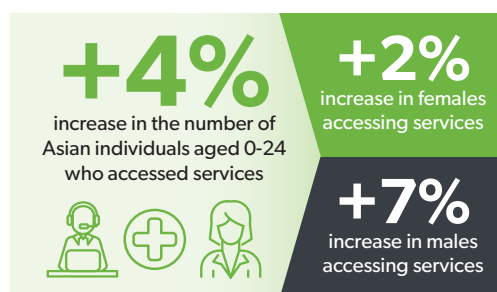
The Asian ethnic group is projected to be the fastest-growing among those aged 0-24

+36%
projected growth

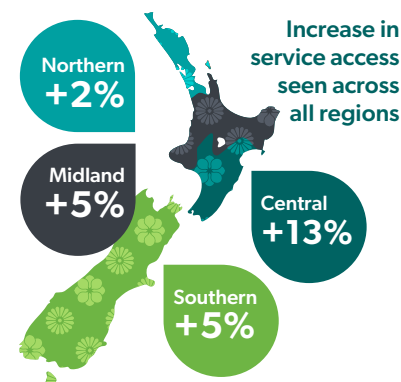
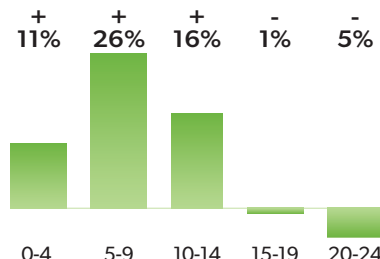


SERVICE ACCESS DATA

Asian service access to Health NZ and NGO ICAMH/AOD services for those aged 0-24 (2021 - 2023)

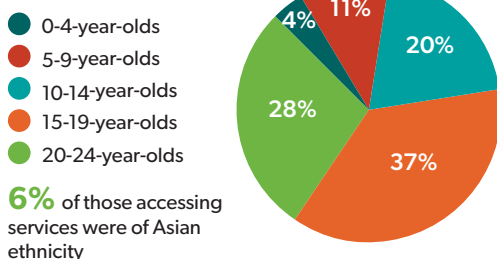


Service access by age group



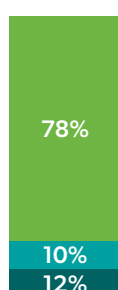
Asian service access to Health NZ and NGO ICAMH/AOD services for those aged 0-24 (2023)

Access by age group



Access by service

Legend:
 ● Health NZ
 ● NGO
 ● Health NZ & NGO



Northern region had the highest proportion of both NGO and Health NZ access

NGO



Health NZ

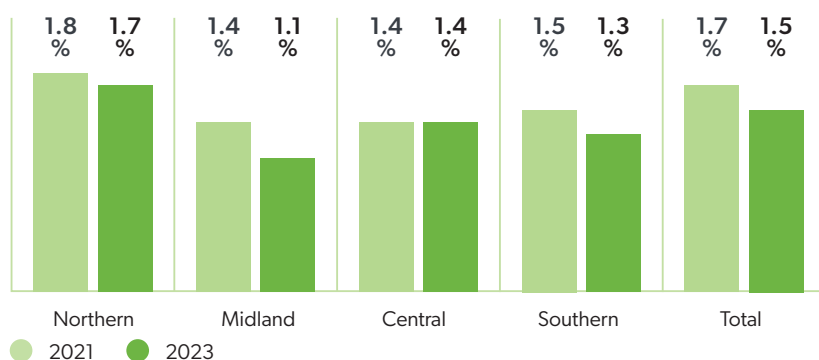


Legend: ● Northern ● Midland ● Central ● Southern

Asian service access rates to Health NZ and NGO ICAMH/AOD services for those aged 0-24

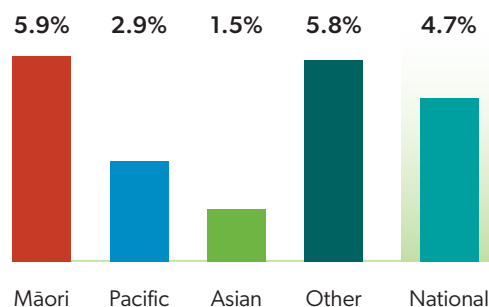
Service access rate data reflects access to services as a percentage of corresponding population

Access rates decreased across most regions (2021-2023)



Access rates by ethnicity (2023)

Asian population had the lowest rate of access rate compared to other ethnicity groups



Find out more at wharaurau.org.nz/stocktake