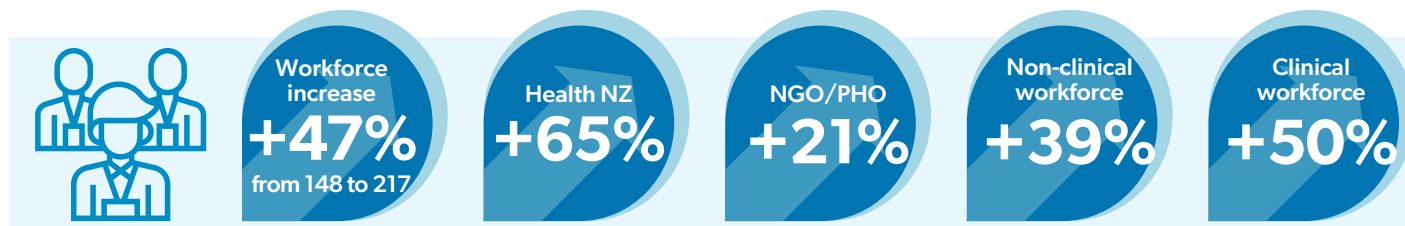


Pacific national overview

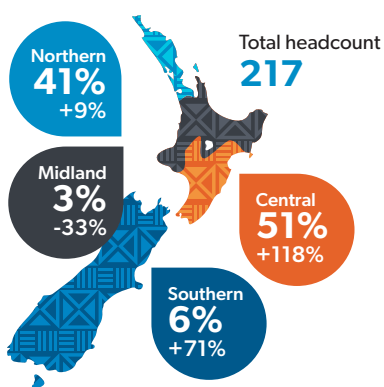
This Pacific national overview presents data related to the Pacific workforce who work in infant, child, and adolescent mental health and alcohol and other drug (ICAMH/AOD) services, funded by Health NZ. It also includes population and service access data for Pacific pēpi, tamariki, and rangatahi aged 0–24. For 0–19 data, data definitions and data references, please see main report.

WORKFORCE DATA

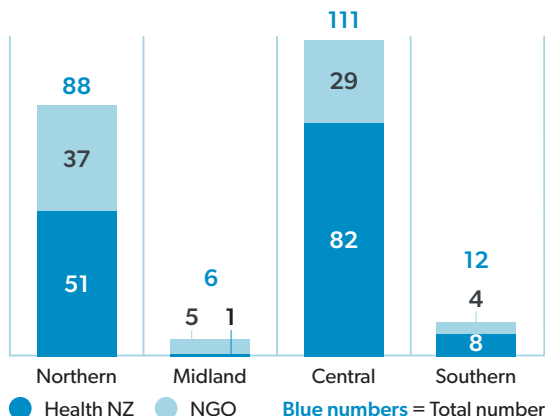
Pacific workforce data by headcount (2022 - 2024)



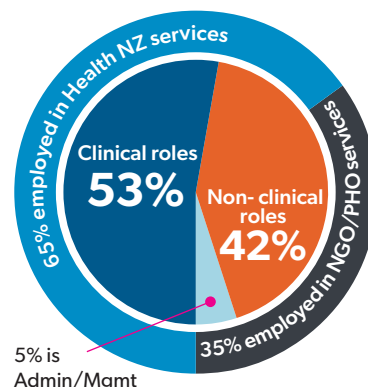
Regional share of Pacific workforce in 2024 and change since 2022



Pacific workforce headcount by region and service type (2024)

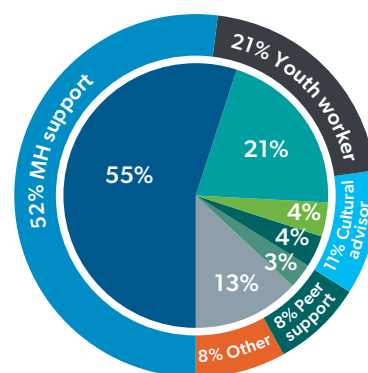
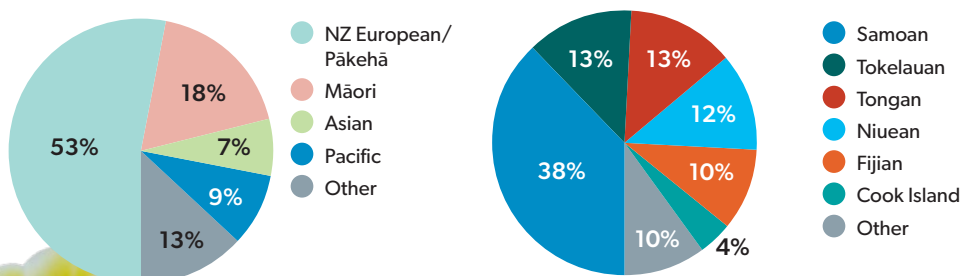


Pacific workforce by service and role type (2024)



Pacific workforce by ethnicity (2024)

Pacific workforce made up 9% of the total workforce

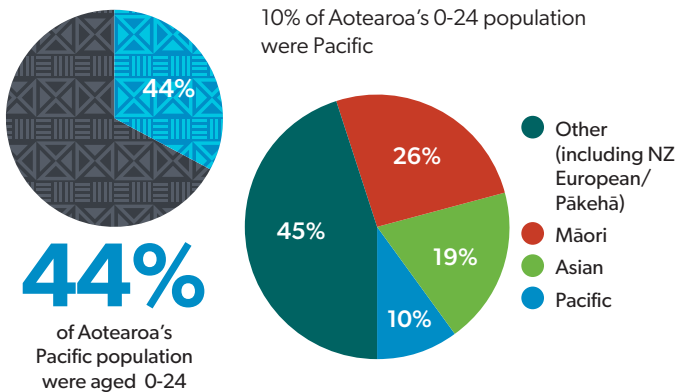


Outer ring:
Non-clinical roles (42% of total)
Inner circle:
Clinical roles (53% of total)

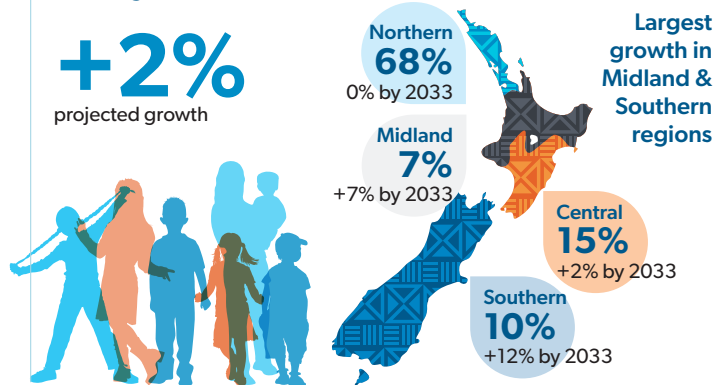
- Nurse
- Psychiatrist
- Social worker
- AOD practitioner
- Occupational therapist
- Other

POPULATION DATA

Pacific population data for those aged 0-24 (2023)

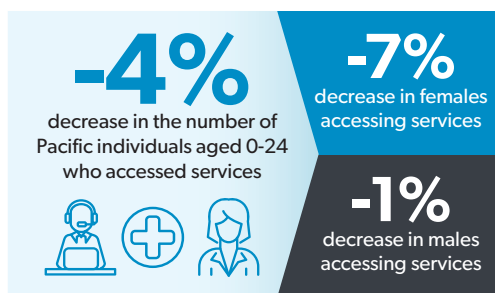


Pacific population projection data for those aged 0-24 (2023-2033)

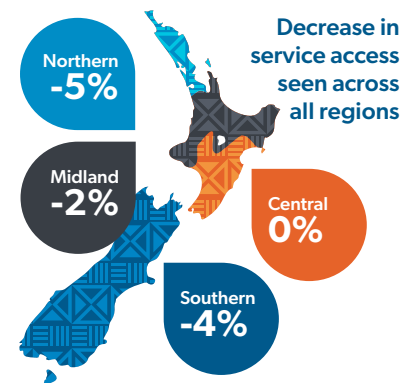
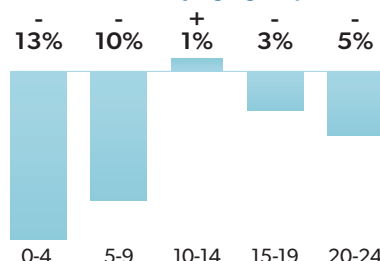


SERVICE ACCESS DATA

Pacific service access to Health NZ and NGO ICAMH/AOD services for those aged 0-24 (2021 - 2023)

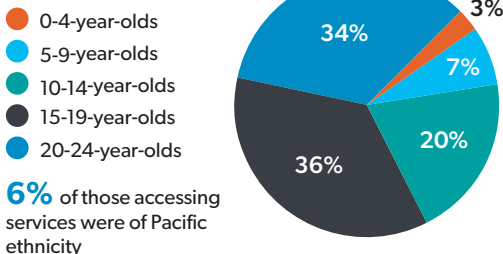


Service access by age group



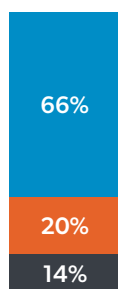
Pacific service access to Health NZ and NGO ICAMH/AOD services for those aged 0-24 (2023)

Access by age group

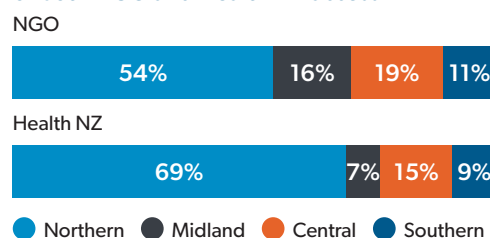


Access by service

● Health NZ
● NGO
● Health NZ & NGO



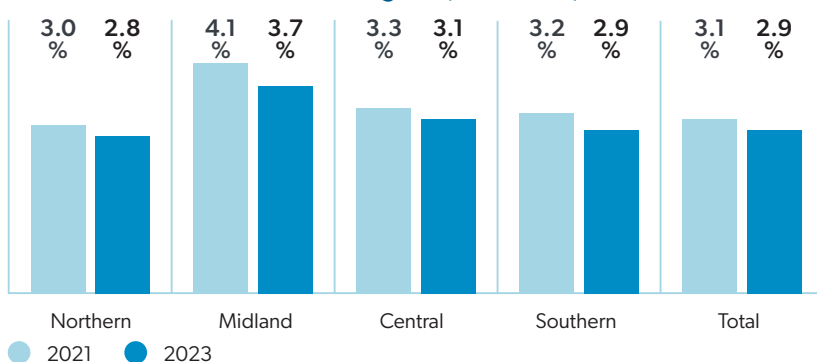
Northern region had the highest proportion of both NGO and Health NZ access



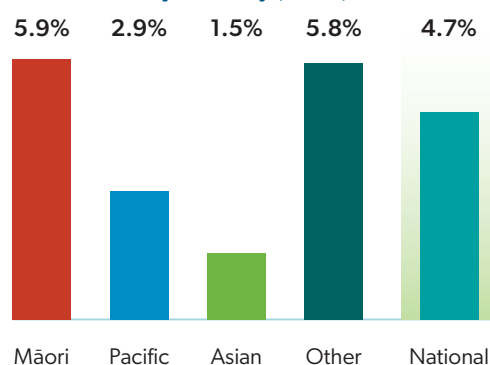
Pacific service access rates to Health NZ and NGO ICAMH/AOD services for those aged 0-24

Service access rate data reflects access to services as a percentage of corresponding population

Access rates decreased across all regions (2021-2023)



Access rates by ethnicity (2023)



Find out more at wharaurau.org.nz/stocktake