

Smart & Innovative Popping Machines

# InnoPOP

makes the best Popped Chips



## What is POPPING?

Well to start with,

# IT'S NOT

Oil Frying

Baking

Air Frying

Boiling

Roasting

Steaming

Toasting

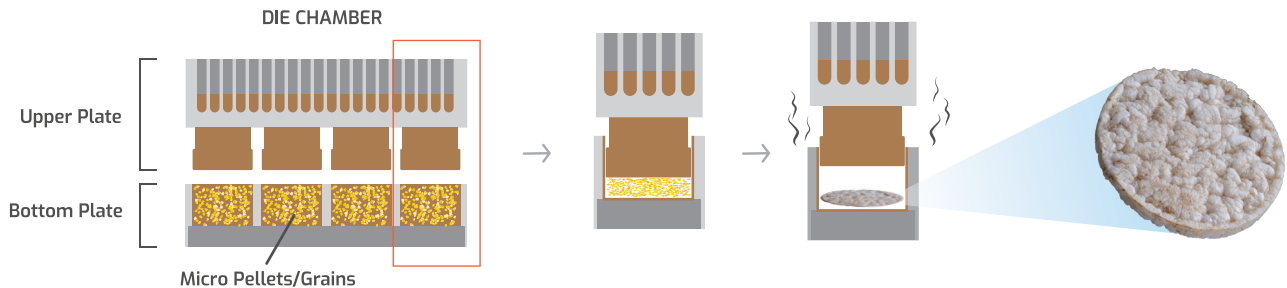
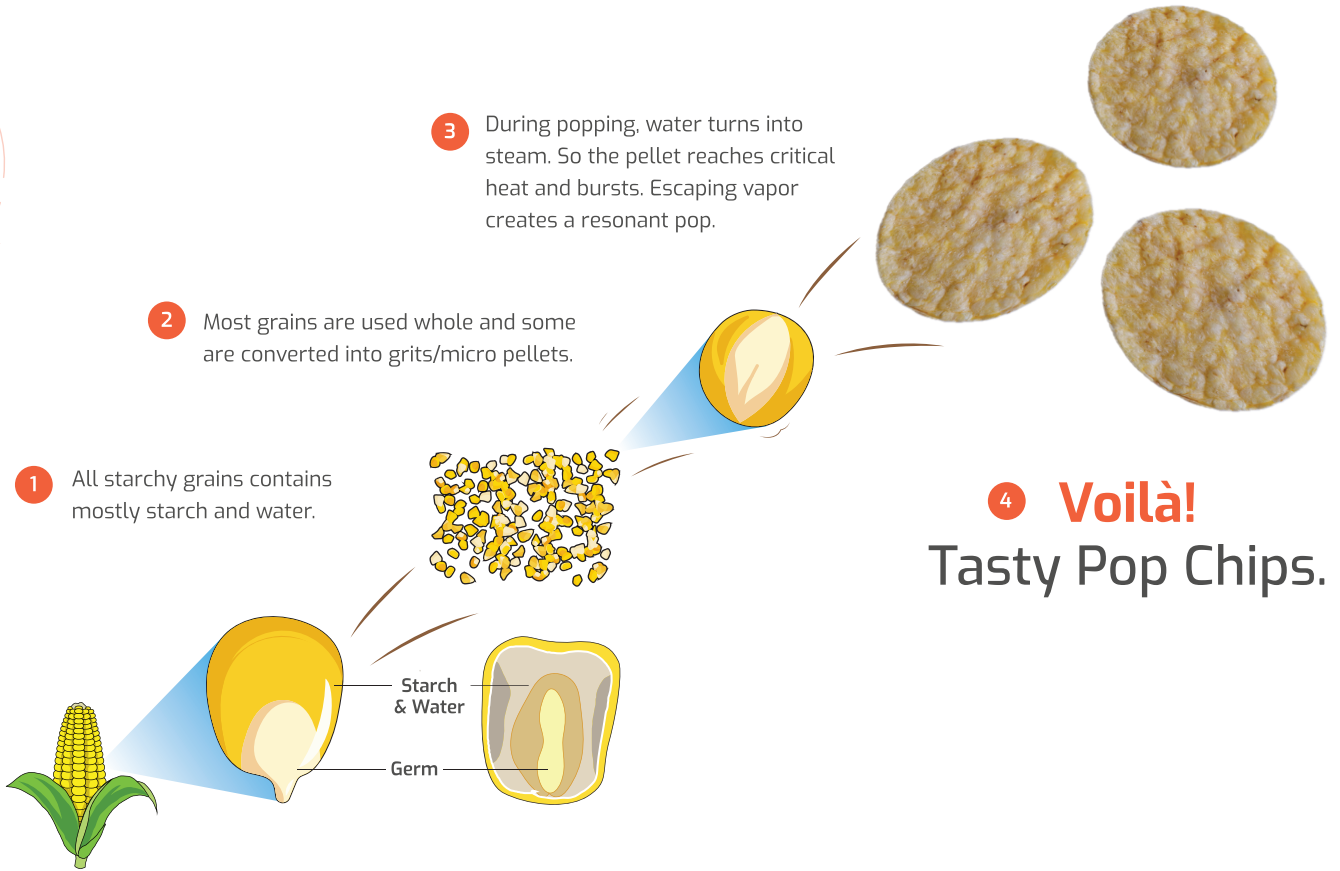
and it's not many things.

It's a pure '**Dry compression cooking**' also called *compression popping* or "POPPING"

Oil Free



# Basics of **POPPING**



# What can be **POPPED?**

## WHOLE GRAINS



Corn



Wheat



Sorghum

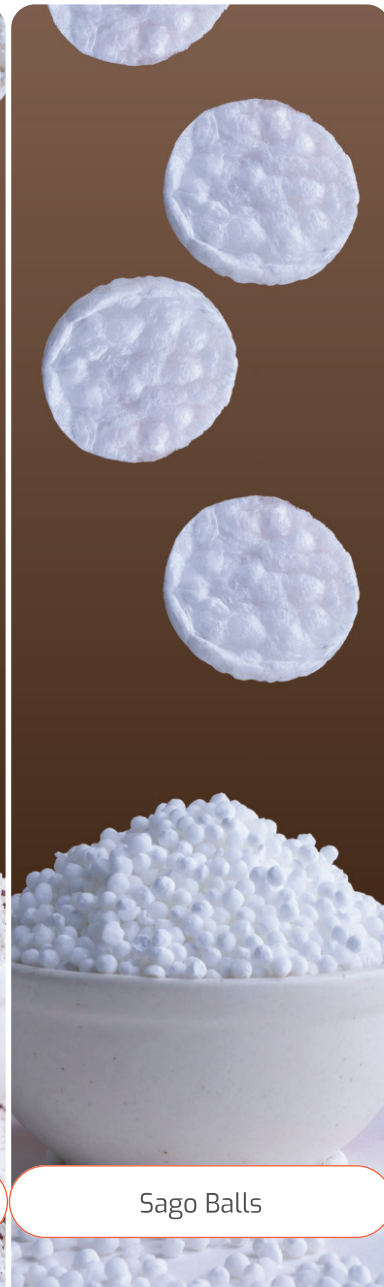
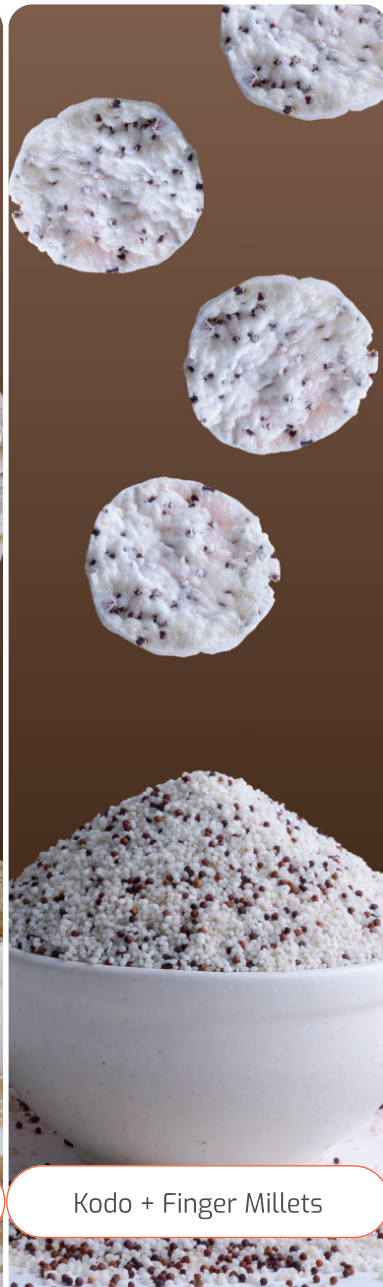


Rice + Oil Seeds

Multiple combinations including Oil seeds (up to 3% to 5%) & broken.

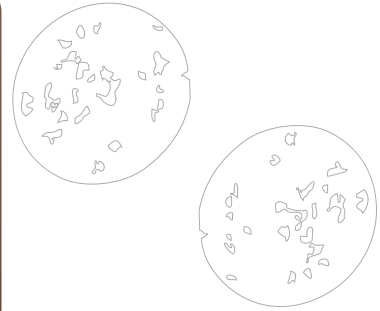
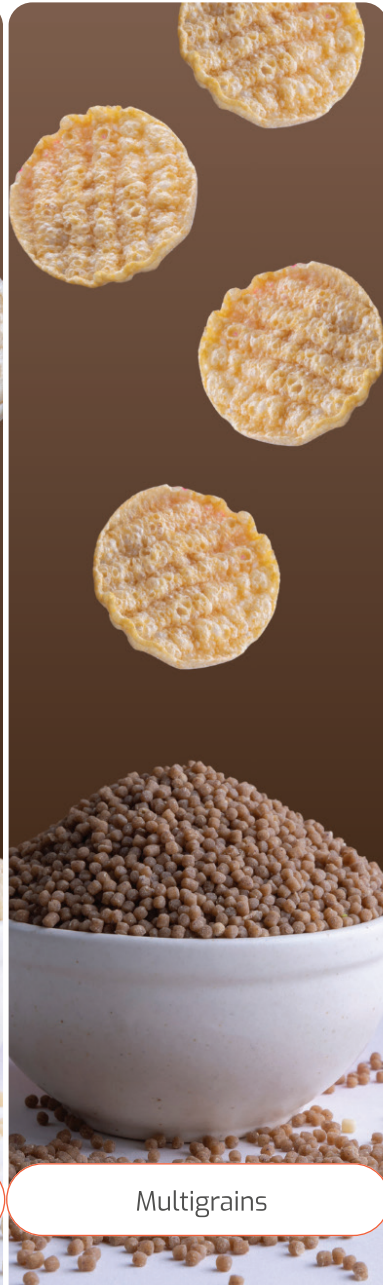


## GRAINS SEEDS & BROKENS



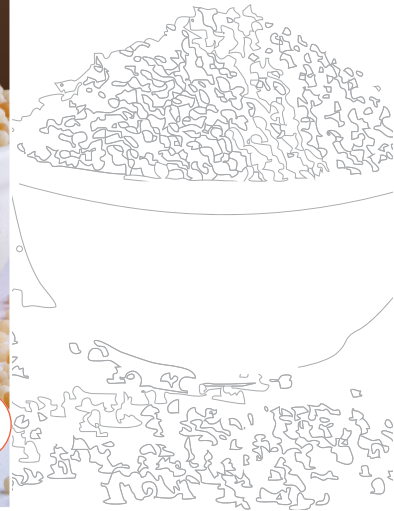
# What can be **POPPED?**

## MICRO PELLETS



And more,  
as per availability  
of micro pellets

Customers can create  
their own personalized  
combinations.



# Discover the **Benefits** of Our Popping Machines

## Reliable Systems

Our popping machines are very reliable, advanced and fully automatic for excellent operational efficiency.



## Future Proof Automation

Our popping machines are programmed in a way to adapt to future developments for longer operational life, leveraging **IoT 4.0 capabilities & Cloud Intelligence** to enhance connectivity, efficiency and predictive maintenance.



## Healthy and Zero Oil Indulgence

Indulge guilt-free with InnoPOP's healthy popped chips, packed with nutrition. Start your smart snack journey today with InnoPOP!



## Easy to Use Easy to Maintain

InnoPOP machine: Easy to use for creating favorite popped chips, impressing customers with simplicity and efficiency.





**Per Day Production Capacity:**

**120 Kg+ Chips/Day**

**Per Hour Production Capacity:**

**4300 to 5000 Chips/Hr**

**Quality Assurance:**

**97% Uptime**

**Optimum Efficiency:**

**<1% Wastage**

**Popping capacity:**

12 chips - circle - 45 mm dia.

12 chips - triangle - 49 mm L

3 chips - circle - 90 mm dia.

**PLC :** Delta

**HMI:** 7" Touch screen

**Motors:** ABB

**Hydraulic Pump and Valves:**

Rexroth

**Hydraulic Cylinders:**

Specially designed cylinders with high temperature, high performance seals

**Heaters:** 4 qty

Closed loop PLC controlled

**Pneumatics:**

SMC (Japan / India)

**Power Requirement:**

5KW @415VAC, 50/60 Hz

**Air requirement:**

1 CFM @ 7 bar

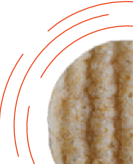
# InnoPOP 200



H: 1650 mm

L: 1370 mm

W: 750 mm





# InnoPOP 500

Per Day Production Capacity:  
**300 Kg+ Chips/Day**

Per Hour Production Capacity:  
**10,000 to 11,500 Chips/Hr**

Optimum Efficiency:  
**<1% Wastage**

Quality Assurance:  
**97% Uptime**



IoT 4.0



Remote  
Support  
Option



SCAN FOR IoT DETAILS



## Popping capacity:

28 chips - circle - 45 mm dia.  
32 chips - triangle - 49 mm L  
8 chips - circle - 90 mm dia.

PLC : Delta / Siemens

HMI: 7" Touch screen

Motors: ABB

Hydraulic Pump and Valves:

Rexroth

## Hydraulic Cylinders:

Specially designed cylinders  
with high temperature, high  
performance fluropolymers seals

Heaters: 8 qty

Closed loop PLC controlled

Pneumatics: SMC (Japan / India)

## Power Requirement:

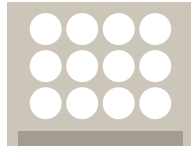
18 kW (Power Mode)  
12 kW (Eco Mode)  
@415VAC, 50/60 Hz

## Air requirement:

1.5 CFM @ 7 bar

# Select from the Wide Range of Die Shapes

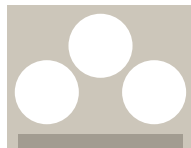
## IP200 Die Shapes



IP200-C45D



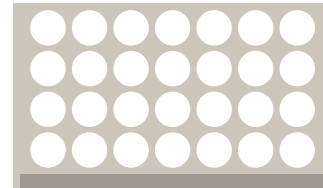
IP200-T49L



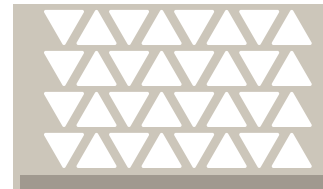
IP200-C90D



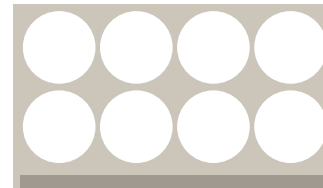
IP200-R115x52



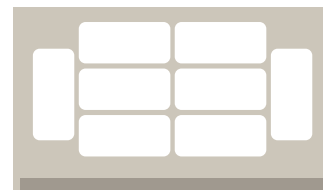
IP500-C45D



IP500-T49L



IP500-C90D



IP500-R115x52

We also provide customized die shapes according to your requirements

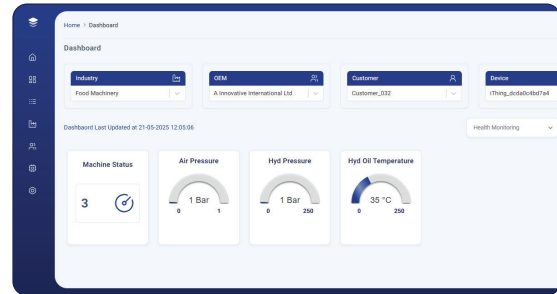


# InnoPOP is IoT 4.0 Capable

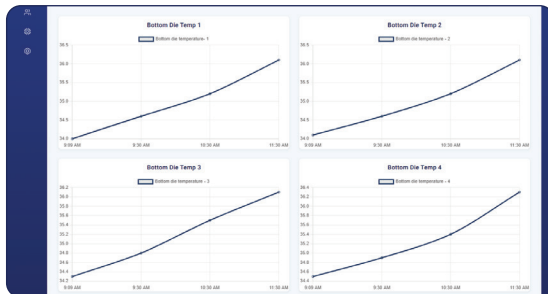
InnoPOP-500 comes equipped with an advanced IoT 4.0 module



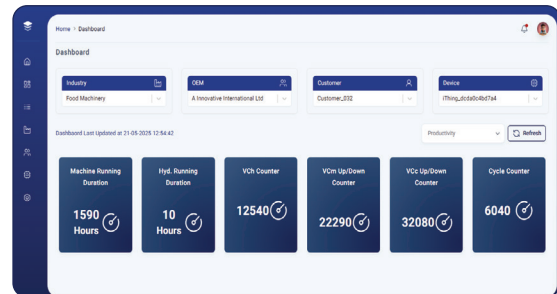
Dashboard



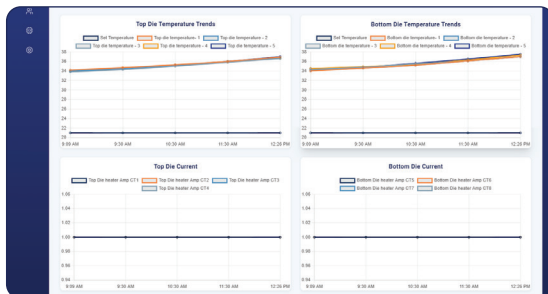
Health Monitoring



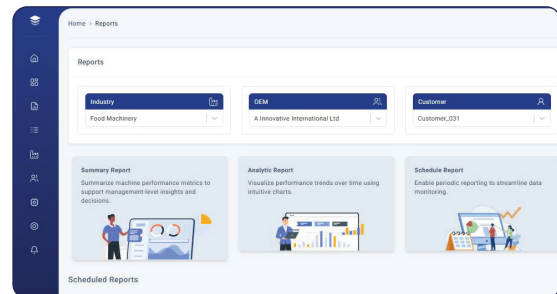
Die Temp. Trend



Productivity

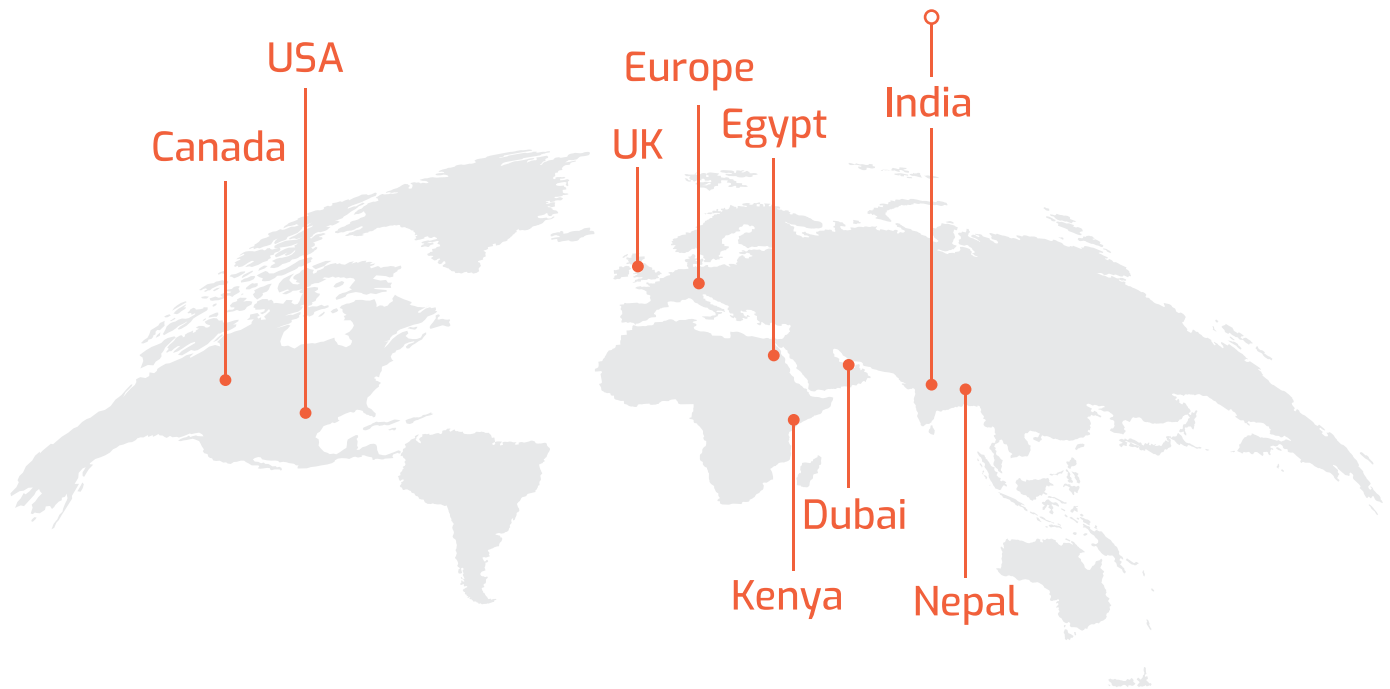


Group Trend



Reports & more...

All essential metrics are available on a smart dashboard to optimize performance, reduce downtime, and ensure smooth operations.



# InnoPOP machine

CREATES POPPED CHIPS LIKE NO OTHER!

Experience the delicious crunch of our Popped chips, made with love and innovation

## Get in Touch

Have a question?  
Contact us today!



Email: [sales@poppingmachine.com](mailto:sales@poppingmachine.com)  
Phone: +91 99099 88244

**A Innovative International Limited**  
Office: 6A, Orchid Industrial Park,  
Sarkhej Bavla Highway, Rajoda,  
Ahmedabad - 382220, Gujarat, **INDIA**

[www.poppingmachine.com](http://www.poppingmachine.com)

SCAN FOR  
MORE INFORMATION

