

Land for Sale Or Lease

10 COMMERCE BOULEVARD

WRENTHAM, MA 02093

2.6 ACRES



CONTACT

DAVID SKINNER

ADVISOR, PARTNER

david@prescottios.com

617.999.0057

DEVON WAGNER

ADVISOR

devon@prescottios.com

978.795.7933

PROPERTY DETAILS



Property Description

2.6 AC Commercially Zoned Vacant Land

Property Highlights

- Owner would like to land lease, sell, or build and lease
- Permitted for a gas station and a convenience store
- Final approvals needed from DOT for traffic light at the corner of Commerce Boulevard and Route 1
- 115 feet of frontage on Route 1
- 0.8 Miles to I-495
- 3.2 Miles to I-95
- 3.9 Miles to Gillette Stadium
- 21 Miles to Providence
- 31 Miles to Boston

Permitted Building Specifications

Gas Station:	Six double-sided Pumps
Convenience Store:	Approx. 4,500 SF
Lot Size:	2.6 Acres

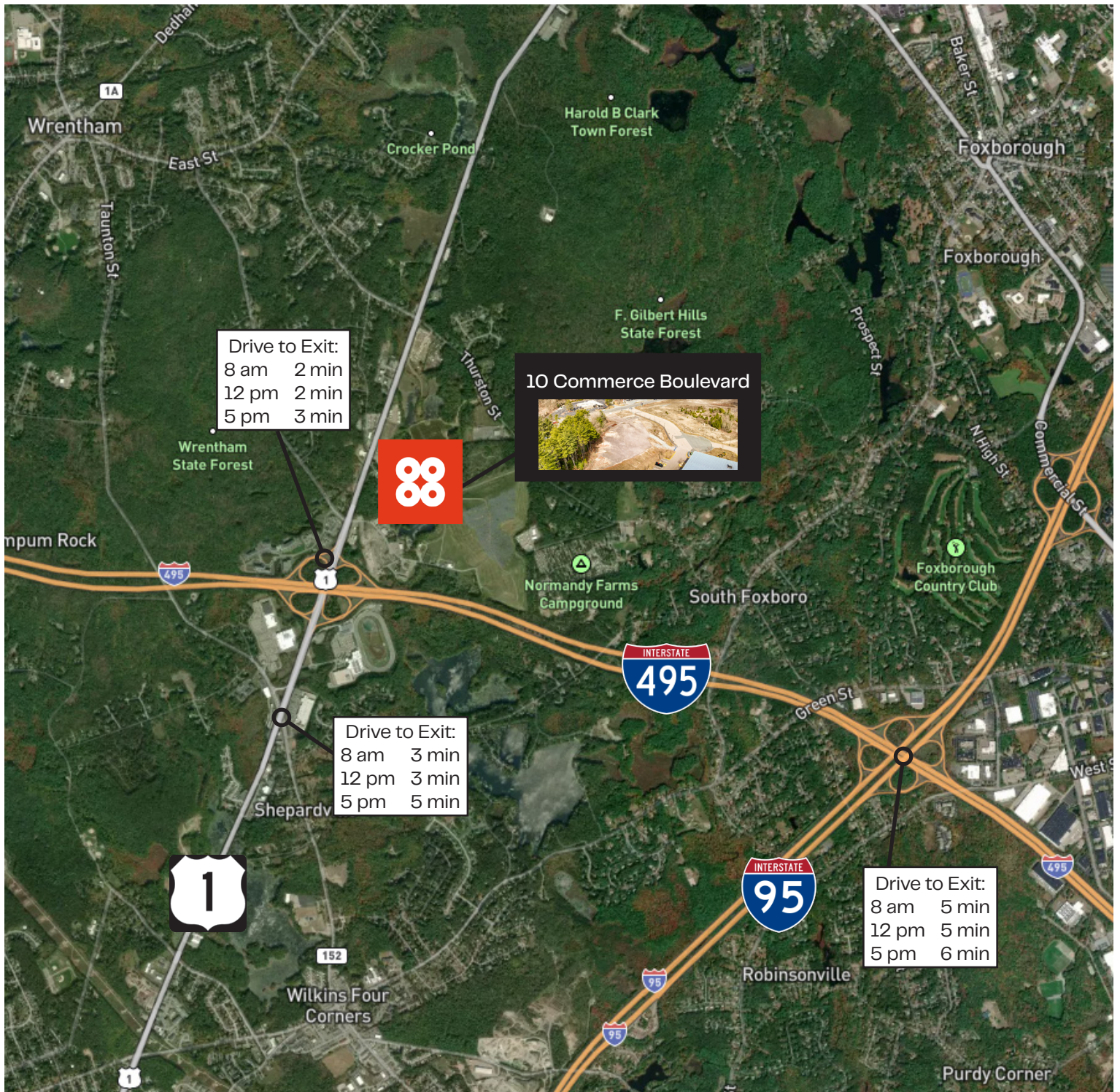
Demographics	3 Miles	5 Miles	10 Miles
Total Households	8,661	29,239	150,745
Total Population	21,913	75,954	398,178
Avg. HH Income	\$168,490	\$159,723	\$156,241



ADDITIONAL PHOTOS



NEIGHBORHOOD MAP



Drive times shown on this map are estimates based on Google Maps data and are provided for informational purposes only. Actual travel times may vary due to traffic, road conditions, weather, construction, and other unforeseen factors. Please use these estimates as a general guide and plan accordingly.



Industrial and Outdoor Storage (IOS) properties that do their job so you can do yours.

CONTACT

DAVID SKINNER

ADVISOR, PARTNER

david@prescottios.com
617.999.0057**DEVON WAGNER**

ADVISOR

devon@prescottios.com
978.795.7933

We obtained the information above from sources we believe to be reliable. However, we have not verified its accuracy and make no guarantee, warranty or representation about it. It is submitted subject to the possibility of errors, omissions, change of price, rental or other conditions, prior sale, lease or financing, or withdrawal without notice. We include projections, opinions, assumptions or estimates for example only, and they may not represent current or future performance of the property. You and your tax and legal advisors should conduct your own investigation of the property and transaction.