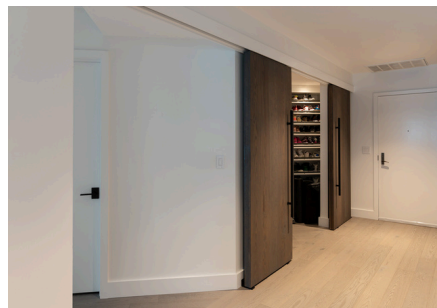


Belltown Condo

SEATTLE, WA



Located in downtown Seattle's Belltown neighborhood, this two-bedroom, two-bath condo was refreshed to better suit the owners' lifestyle and aesthetic. While the original floorplan remained intact, the unit was transformed with updated finishes, fixtures, and custom details. A sleek modern palette is softened with warm wood accents, creating a space that feels both refined and comfortable for everyday living. Clean lines, layered textures, and thoughtful detailing help balance the contemporary setting with a sense of warmth.

The open kitchen anchors the home with raised white cabinetry, marble-look quartz countertops, and brass accents paired with navy bar seating. New hardwood flooring ties the living, kitchen, and dining areas together, while updated lighting and a custom fireplace cabinet create a cohesive focal point for gathering. The primary suite was redesigned as a spa-like retreat with a large walk-in shower clad in matte black marble tile, wrap-around glass, and a floating dual vanity. Thoughtful additions such as built-in shelving, custom closet organization, and sliding barn doors that can create a private guest suite add flexibility, functionality, and storage throughout the home.