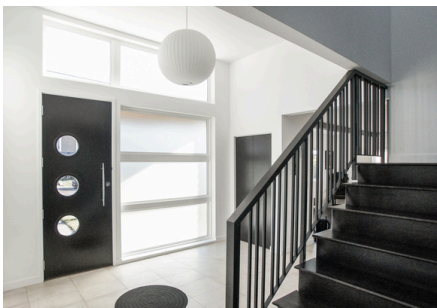
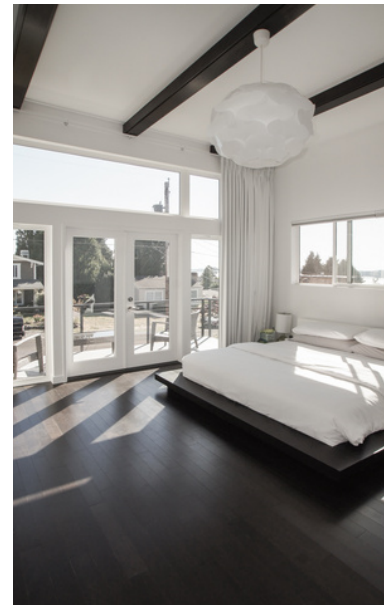


Mod Remodel

KIRKLAND, WA



The updated design for this mid-century dwelling created a home that is nearly indistinguishable from the original. The roof was peeled off for a new second-story addition, and the main floor was gutted while maintaining key features like the roman brick wainscot.

The living room, with its inviting open plan, offers direct connection to the entry, stair, and kitchen. The circular seating creates an intimate space for interaction. In the primary bedroom, the wide windows and glass doors let light stream in and create a connection to the rest of the beautiful Kirkland neighborhood and the view beyond. Large windows were incorporated into other rooms throughout the house to create a sense of openness, while contributing to the theme of clean lines.

Unique touches are seen throughout the home like circular windows and lamps grounded in a classic black and white color scheme while the bedroom pops with bright accents of color and in addition to a loft. The plot allowed for a substantial backyard, perfect for family gatherings. The design further ensures that multiple activities can be enjoyed at once.