



Global Leadership Exchange

Presentation:

The impact of a pandemic on longitudinal research | The Infant Development, Environment And Lifestyle “IDEAL” Study

Please note: Whāraurau has made this and other resources available on its website with the permission of the Global Leadership Exchange. As these are resources are provided by the GLE, Whāraurau is not responsible for broken links or outdated content. Whāraurau will endeavour to keep the information as current as possible with the assistance of the GLE.

The impact of a pandemic on longitudinal research!

The Infant Development, Environment And Lifestyle “IDEAL” Study

IIMHL Presentation

28 January 2022

Professor Trecia Wouldes
Department of Psychological Medicine



THE UNIVERSITY OF
AUCKLAND
Te Whare Wānanga o Tamaki Makaurau
NEW ZEALAND

**MEDICAL AND
HEALTH SCIENCES**



BROWN
Alpert Medical School

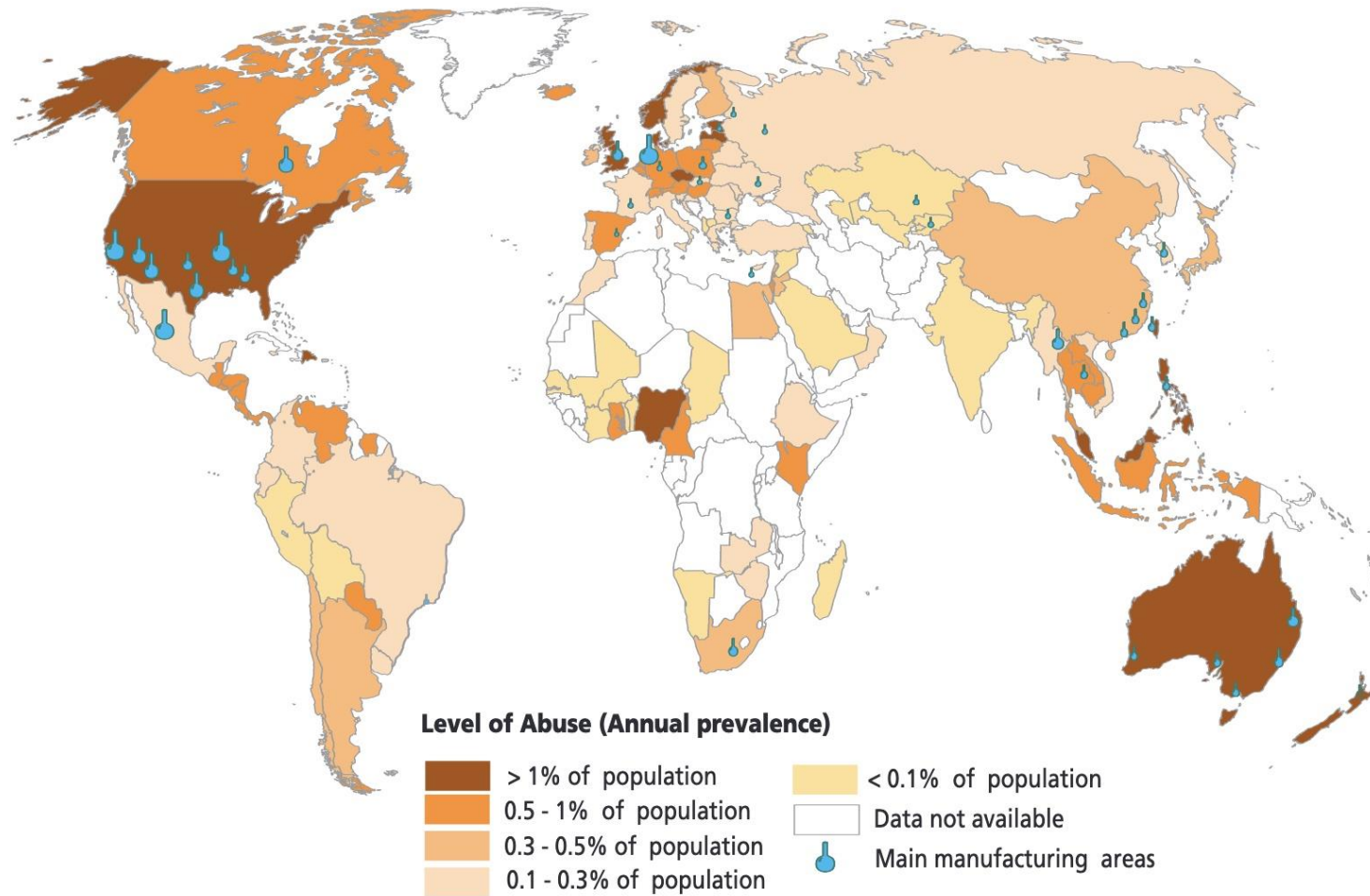


Methamphetamine Street name "P" for Pure

- Powerful stimulant drug
- Odourless crystalline substance
- Colour changes with ingredients
- Smoked, snorted, injected
- Manufactured in man-made labs



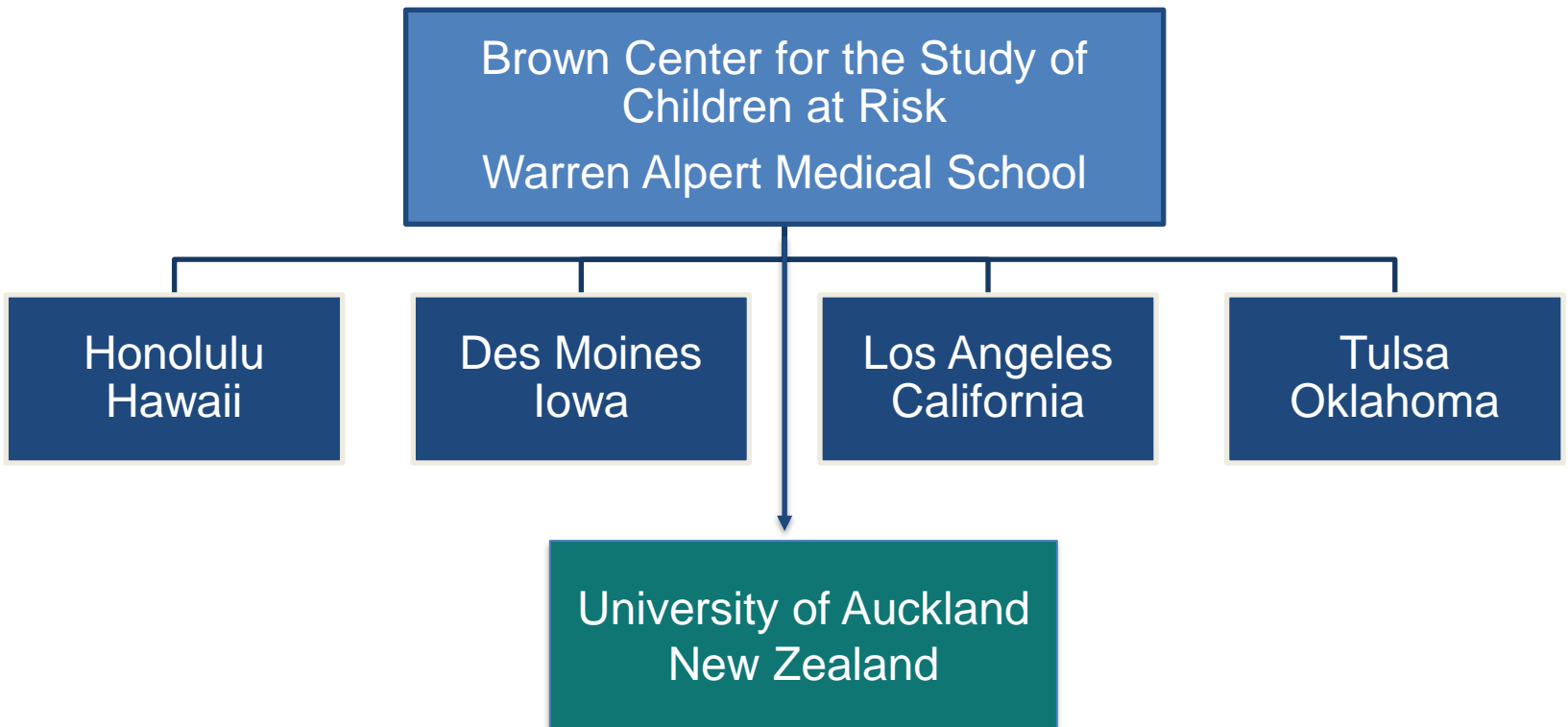
Map 22: Use of amphetamines in 2004 (or latest year available)



Map 23: Ranking of amphetamine-type stimulants in order of prevalence in 2004 (or latest year available)



Infant Development, Environment And Lifestyle “**IDEAL**” Study



US vs NZ IDEAL Study Opportunity to explore cross-cultural questions

United States

- Child removal for prenatal drug use common
- Poor/restricted health care – insurance required
- Purity of drug variable
- Restricted access to benefits and housing
- Punitive approach towards mothers who use illicit drugs - imprisonment

New Zealand

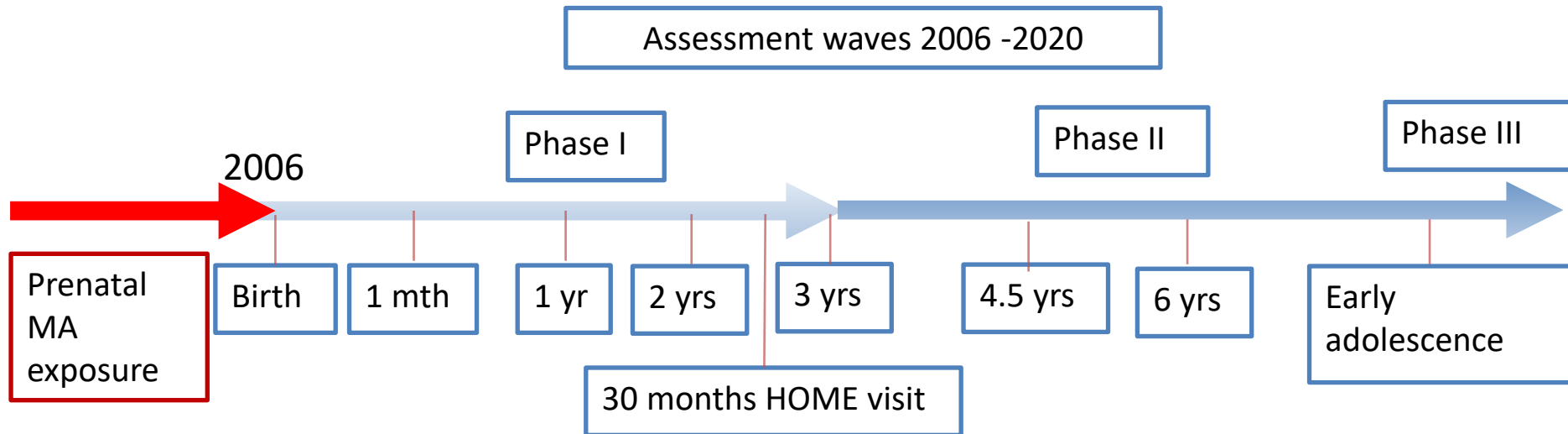
- Child removal for prenatal drug use less common
- Health care during pregnancy available for everyone
- “P” Purity of meth
- Needs based benefit for single and drug dependent mothers
- “Harm Minimisation” approach to maternal drug use



Recruited during pregnancy

107 Mothers who reported using METH during pregnancy

110 Matched comparison mothers



Prenatal

Infancy

Early Childhood

Middle Childhood

Adolescence

Social-emotional
Cognitive
Motor
Growth/Health
Behaviour

Maternal Lifestyle Interview

- Neighborhood characteristics
- Domestic Violence
- Family Resources

Medical Chart Review

- Obstetric History – Terminations, Miscarriages
- Antenatal Care

Maternal Mental Illness

- Beck Depression Interview (BDI)
- Brief Symptom Inventory (BSI)

Drug Use and Related Harm

- Substance Use Inventory (SUI)
- Substance Abuse Subtle Screening Inventory-3 (SASSI-3)
- Addiction Severity Index (ASI)

Prenatal

Infancy

Early Childhood

Middle Childhood

Adolescence

Summary of Findings

Birth, Infancy and early childhood

- Smaller babies at birth
- Neurobehavioural differences
- Delayed motor development
- Delayed cognitive development (Māori boys)

Prior to entering primary school and middle childhood

- Delayed motor and cognitive development (Maternal Distress)
- Poorer executive function (Maternal Distress)
- More problem behaviour (Maternal Distress)
- General and verbal memory (Meth)



- First time child interviewed
- Data entered directly into Redcap
- Cognitive testing on iPad
- Eye movement on specialist equipment

Domain	Measure
Substance use	Substances and Choices Scale (SACS; Werry Workforce Whāraurau)
Emotional & behavioural problems	Youth Self Report (Achenbach)
Exposure to violence	Modified 'Things I've Seen and Heard', additional questions re domestic violence
Life experiences	Negative Life Events Inventory (NIH, plus additions)
Wellbeing	Warwick- Edinburgh Mental Wellbeing Scale
Resilience	Compass-W Scale
Puberty	Tanner Scales plus menstruation questions (NICHD)

The challenges & impact of COVID

- Needed to put our cognitive assessments online
- Needed to train staff to use RED Cap and complete maternal & Adolescent interviews via ZOOM

Problem:

- **Not all families have access to ipad or computer to carry out cognitive testing or use ZOOM**
- **Questions we ask primary caregiver and adolescent often sensitive – no safe or private place to respond**
- **Adolescents in both Methamphetamine exposed and comparison group reporting more distress (CBCL)**

United Nations Office on Drugs & Crime 2021 Report

Amphetamines

Annual prevalence of drug use

(or latest year available)

