

UK DEGREE APPLICATIONS MADE EASY

MABECS *QuickGuides*



ALL YOU NEED TO KNOW ABOUT

Management & Business Studies

SPECIALLY CURATED FOR YOU BY



BEFORE WE GO FURTHER...



Who is MABECS

MABECS is Malaysia's most experienced advisory service on UK degrees.
Our service is free of charge.



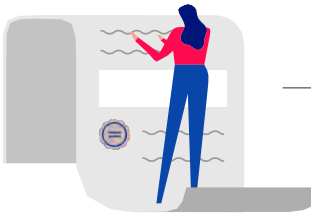
To find out more about MABECS' history and services, turn to the inside back cover.
To reach a MABECS education advisor, call or WhatsApp us at +603-7956 7655 or
email enquiries@mabecs.com

From enquiry to successful student placement, **we take care of it all.**

Advice & guidance

Find guidance on the right course and university including rankings, research ratings, entry requirements, and more.

1



2

Application

Our experienced UK education advisors will advise you on the required documents and relevant procedures. Note that the application method is different from the postgraduate level.

Test Preparation & Mock Interviews

We provide assistance for LNAT, BMAT, UCAT and others tests that might be required by UK universities. We also provide mock interviews for Medicine, Dentistry, Veterinary Science and Oxford & Cambridge.

3



4

Air tickets & accommodation

Yes, we also help to provide guidance from flight bookings, visa applications and suitable accommodations to stay in.

Study in the UK!

CONTENTS

01

GET TO KNOW MANAGEMENT & BUSINESS STUDIES

Introduction	02
Course Organisation	02
Course Content	03

02

APPLYING FOR MANAGEMENT & BUSINESS STUDIES

How it works	05
Course Codes & Fees	06
Entry Requirements	26
Selectors' Attitude	26
Personal Statement	26

03

LOOKING AHEAD

Career Path	28
-------------	----

Have a different set of questions about studying in the UK?

Call us* at **03-7956 7655** to reach us immediately, or
email **enquiries@mabecs.com** if you're the shy type.

*Our education advisors have all been educated in the UK with over 10 years of experience in counselling. They help provide first-hand information on UK education as well as student life in the UK.



DISCLAIMER

The MABECS QuickGuides are for reference purposes only.

*Course content, entry requirements, and tuition fees could change from time to time.
You're advised to check the specific university website for the latest information.*

01



GET TO KNOW
MANAGEMENT &
BUSINESS STUDIES

Introduction

Management and Business Studies is a broad-based discipline that studies the functions of the business world and management theories of organisations. They provide a solid foundation for students who want to launch careers in business and management. The study areas can be cross-cultural and cross-geographical so that students are provided with a more comprehensive knowledge in business and management.



Course Organisation

Typically, Management and Business Studies degrees last 3 years. Students can opt for an additional year of placement or study abroad, which takes place in the third year of study.

Modules are taught through lectures, small group tutorials and seminars. Assessment will depend on the modules, with compulsory subjects typically being assessed in examinations, supplemented by written essay and elective modules by combination of those and other exercises.

Course Content

There may be compulsory subjects that cover the essential understanding of Management and Business Studies. Students are also expected to study quantitative methods and are usually given flexibility to take electives that interest them from a long list.

- **First Year**

Students will study essential foundations in Accounting, Economics, Business Law, Management, and Statistics.

- **Second Year**

Students will be able to either take further electives that build on the foundation from the first year or take any subjects that interest them. Subjects will normally include Financial Accounting, Corporate Finance, Human Resources Management, Operation, Information Technology for Business, and more.

- **Third Year**

Students will study advanced level subjects in all the main fields of business and management. Students can select subjects according to their interests. These usually include Strategy, Decision Science, Business Analysis, Global Business, and more.



02

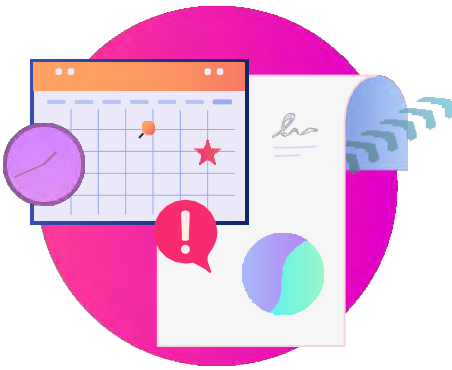


**APPLYING FOR
MANAGEMENT &
BUSINESS STUDIES**

How it works

Applications for undergraduate degrees for most of the UK universities go via UCAS. You will need to register and complete a UCAS form, with payment, by the set deadline. Colleges will usually set internal deadlines for their students. With the exception of Oxford and Cambridge, the UCAS deadline for competitive universities is January 14, 2026.

The final deadline to submit a UCAS application is 30 June.



Course Codes & Fees

Name of University	Course Title & UCAS Code	Course Duration	Tuition fees (£) per academic year 2025	Entry Requirements	Remarks
Aberdeen	Business Management (N200) Accountancy and Business Management (NN24)	4FT	£ 20,800	A Level: BBC IB: 32 points, include 555 at HL	Joint honours degrees: Business Management and Economics/English/Finance /French/Geography etc... For more courses, please visit https://www.abdn.ac.uk/study/undergraduate/subject-areas/345/business-management/
Aberystwyth	Business and Management (N122) Business Finance (N310)	3FT	£ 19,190	A Level: BBB – CCC TP: 96 – 120 IB: 26 – 30	Joint honours degrees: Business Management and French/Computing/Economics/Law/Psychology etc... For more courses, please visit https://courses.aber.ac.uk/subjects/undergraduate#business-&-management
Anglia Ruskin	Business Management (N201) Business with Entrepreneurship (N100) Marketing (N506)	3FT / 4SW	£ 16,700	A Level/TP: 96 3 GCSE including English and Maths at C / 4 IB: 24	Other courses: Business with Economics/Entrepreneurship/Events Management/Finance/Human Resource Management/Marketing/Tourism Management For more courses, please visit https://www.aru.ac.uk/business-and-law/management
Aston	Business and Management (NN12) Business Analytics (NG12) Human Resources and Business Management (N600) Marketing (N500)	3FT / 4SW	£ 21,500	A Level: BBB – BBC IB: 31 with 555 at HL, SL Maths at 4 and SL English Language at 5.	Joint honours degrees: Business and Politics/Sociology Business Management and English Language/ International Business and Economics/Management For more courses, please visit https://www.aston.ac.uk/business/aston-business-school

Name of University	Course Title & UCAS Code	Course Duration	Tuition fees (£) per academic year 2025	Entry Requirements	Remarks
Bangor	Business Management (N200)	3FT / 4SW	£ 19,000	TP: 104 – 136 GCSE Maths C / 4	For more courses, please visit https://www.bangor.ac.uk/study/undergraduate/business-management-marketing
	Management with Human Resource Management (N2N6)				
	Marketing (N501)				
	Accounting and Management (N4N2)				
Bath	Accounting and Management (C170)	3FT / 4SW	£ 27,300	A Level: AAA/A*AB IB: 36 with 666 or 765 in 3 HL subjects	For more courses, please visit https://www.bath.ac.uk/campaigns/undergraduate-courses-in-the-school-of-management/
	Business (C110)				
	International Management (C150)				
	Management (C140 / C141)				
Birkbeck	Management with Marketing (C160)	3FT	£ 18,060	A Level: BBC TP: 112 GCSE English and Maths at C / 4	For more courses, please visit https://www.bbk.ac.uk/departments/management/
	Management (N203)				
	Business (N100)				
	Marketing (1D12)				
Birmingham	Business and Human Resource Management (N102)	3FT / 4SW	£ 25,520	A Level: AAB GCSE English at B / 6 and Maths at B / 5 IB: 32 with 665 at HL	For more courses, please visit https://www.birmingham.ac.uk/study/undergraduate/subjects/business-and-management-courses
	Business Management (N200 / N201)				
	Business Management with Marketing (N202 / N203)				
	International Business (N120)				
Birmingham City	Business Finance (NN13)	3FT / 4SW	£ 18,570	A Level: BBC TP: 112 IB: 28	For more courses, please visit https://www.bcu.ac.uk/business-school
	Business Management (N201)				
	Human Resource Management (NN16)				
	Marketing (N500)				

Name of University	Course Title & UCAS Code	Course Duration	Tuition fees (£) per academic year 2025	Entry Requirements	Remarks
Bournemouth	Marketing (N504)	3FT / 4SW	£ 18,700	TP: 104 – 120 inc 2 AL subjects	Other courses: International Tourism & Business Management
	Business & Management (NN12)			GCSE English Language or Literature and Maths at C / 4	For more courses, please visit https://www.bournemouth.ac.uk/about/our-faculties/bournemouth-university-business-school/explore-business-school
	Tourism Management (N800)			IB: 28 – 31	
Bradford	Business and Management (N100 / N101)	3FT / 4SW	£ 20,538	A Level: BBC	For more courses, please visit https://www.bradford.ac.uk/undergraduate/subjects/business-management/
	International Business and Management (NN12 / NNC2)			TP: 112	
	Marketing (N500 / N501)			GCSE English and Maths at C / 4 or equivalent IB: 112 points to include at least 2 HL subjects plus HL 3 or SL 4 in Maths.	
Brighton	Business Management (N103)	3FT / 4SW	£ 17,250	A Level: BBB – BCC	Joint honours degrees: Business Management with Marketing/Finance/Economics/HRM
	International Business Management (N110)			TP: 104-120	For more courses, please visit https://www.brighton.ac.uk/sbl/brighton-business-school/index.aspx
	Marketing Management (N501)			IB: 26 with HL subjects	
Bristol	Business and Management (N200)	3FT	£ 27,400	A Level: AAA – A*AB	Joint honours degrees: Management and Accounting/Economics
	International Business Management (N120)			GCSE English at C / 4 and Maths at B / 6	International Business Management and French/German/Spanish
	Marketing (N500)			IB: 36 with 18 at HL	For more courses, please visit https://www.bristol.ac.uk/business-school/undergraduate-courses/
Bristol UWE	Accounting and Business Management (N4NB)	3FT / 4SW	£ 16,000	TP: 112	For more courses, please visit https://www.uwe.ac.uk/about/colleges-and-schools/business-and-law/bristol-business-school
	Business and Management (N100)			GCSE English and Maths at C / 4	
	Marketing (N500)				

Name of University	Course Title & UCAS Code	Course Duration	Tuition fees (£) per academic year 2025	Entry Requirements	Remarks
Brunel	Accounting and Business Management (NN14 / N2NL) Business and Management (N100 / N221) Human Resource Management (N130 / N131) Marketing (N500 / N501)	3FT / 4SW	£ 22,232	A Level: AAB – BBB IB: 30	For more courses, please visit https://www.brunel.ac.uk/business-school/undergraduate-courses
Cambridge	Management Studies (Part II course)	1 year	£41,124 + College Fees £ 10,017 – 13,662 / year	Based on 2nd/3rd year result of another subject	Offered as a Part 2 course. Students at any college can apply to transfer after 2 or 3 years of studying another subject.
Cardiff	Business Management (N201 / 457D) Business Management (International Management) (N202 / 2B68) Business Management (Marketing) (NN25 / 8J73)	3FT / 4SW	£23,700	A Level: AAB – BBB GCSE English at C / 4 and Maths at B / 6 IB: 31-34 or 665 - 666 in 3 HL subjects	Other courses: Business Management with Human Resources Management/International Management/Logistics and Operations/Marketing/ European Language For more courses, please visit https://www.cardiff.ac.uk/business-school/courses/undergraduate
City	Business Management (N102 / N121) Business with Finance (N1N3 / N131) Business with Marketing (N1N5 / N151)	3FT / 4SW	£ 27,000	For N102 / N121: For N1N3 / N131: A Level: AAA GCSE English at C / 4 and Maths at B / 6 IB: 35 with HL4 or SL5 in English / English	For more courses, please visit https://www.bayes.city.ac.uk/study/undergraduate

Name of University	Course Title & UCAS Code	Course Duration	Tuition fees (£) per academic year 2025	Entry Requirements	Remarks
Coventry	Business and Finance (N290)	3FT / 4SW	£ 16,800	A Level: BBC – BCC (different requirements for different courses)	The courses have different minimum requirements of A-Level qualification. IB requirements are the same across all courses.
	Business and Human Resource Management (N600)			GCSE incl English and Maths at C / 4	
	Business Management (N221)			TP: 104 – 112 (different requirements for different courses)	
	Marketing (N500)			IB: 24 – 28 (different requirements for different courses)	
De Montfort	Accounting with Business Management (NN41)	3FT / 4SW	£ 16,250	TP: 112 in 2 AL	For more courses, please visit https://www.dmu.ac.uk/Study/Courses/Undergraduate-courses/Undergraduate-courses.aspx
	Business Management (NN12)			5 GCSEs incl English and Maths at C / 4	
	Human Resource Management (N600)			IB: 26	
	Marketing (N500)				
Dundee	Business Management (N200)	3FT or 4FT	£ 22,500	Level 1 entry: A Level: CCC	For more courses, please visit https://www.dundee.ac.uk/subjects/business
				IB: 28 with 554 at HL	
				Level 2 entry: A Level: BBB	
				IB: 30 with 555 at HL	
Durham	Business and Management (N201 / N203)	3FT / 4SW	£ 29,500	A Level: AAB and GCSE Maths A / 7 if no AL Maths	For more courses, please visit https://www.durham.ac.uk/business/programmes/undergraduate/
				IB: 36 with 665 at HL and SL 5 at Maths unless has HL Maths	

Name of University	Course Title & UCAS Code	Course Duration	Tuition fees (£) per academic year 2025	Entry Requirements	Remarks
East Anglia	Accounting and Management (NN42 / NN4N)	3FT / 4SW	£ 22,000	A Level: ABB	For more courses, please visit https://www.uea.ac.uk/about/norwich-business-school
	Marketing and Management (NN52 / NN5N)			IB: 32	
	Business Management (N200 / N20N)			GCSE English and Maths at C/4	
	Business and Human Resource Management (N1N6 / N16N)				
East London	Business Management (N2BM)	3FT / 4SW	£ 14,820	TP: 112 from at least 2 A Level	For more courses, please visit https://uel.ac.uk/about/our-schools/royal-docks-school-business-law
	Human Resource Management (N602)			GCSE English and Maths at C / 4	
	Marketing (N502)			IB: 24 and minimum 15 points at HL	
Edinburgh	Business Management (N100)	4FT	£ 28,000	A Level: A*AA-AAA	Other courses: International Business with Languages Joint honours degrees: Business and Economics/Geography/Law/Language For more courses, please visit https://www.business-school.ed.ac.uk/undergraduate/business
	Business with Human Resource Management (N1N6)			GCSE English at C / 4 and Maths at B / 6	
	Business with Marketing (N1N5)			IB: 37 points with 666 at HL to 42 points with 766 at HL	
Edinburgh Napier	Business Management (N200)	4FT	£ 17,520	Year 1 entry: A-Level: BCC	For more courses, please visit https://www.napier.ac.uk/courses/study-areas/business-and-management
	Business Management with Human Resource Management (N2NP)			GCSE grade C / 4 in English and Maths	
	Business Management with Marketing (N2N5)			IB: 28 with three HL subjects at grades 654 Year 2 entry: A-Level: BBB	

Name of University	Course Title & UCAS Code	Course Duration	Tuition fees (£) per academic year 2025	Entry Requirements	Remarks
Essex	Accounting and Management (NN24)	3FT / 4SW	£ 21,525	A Level: BBB – BBC	For more courses, please visit https://www.essex.ac.uk/departments/ess-ex-business-school
	Business Management (N200)			TP: 112 – 120 from at least 2 AL subjects	
	Marketing (N501)			GCSE Maths at C / 4	
	Finance and Management (N344)			IB: 29 – 30 with 554 – 555 including SL Maths at 4 or HL Maths at 3	
Exeter	Accounting and Business (NN41 / NND4)	3FT / 4SW	£ 24,700	A Level: AAB	For more courses, please visit https://business-school.exeter.ac.uk/study/undergraduate/
	Business and Management (N202 / NN12)			GCSE English at C / 4 and Maths at B / 5	
	Marketing and Management (N2N5 / N2NN)			IB: 34 with 665 at HL	
Glasgow	Business & Management (N200)	4FT	£ 26,580	For Year 1: A Level: AAB – BBB at least one English / Humanities subject IB: 36 with 655 at HL English at 6 or SL English at 6 with HL Humanities at 6 For Year 2: A Level: A*A*A IB: 38 with 666 at HL	For more courses, please visit https://www.gla.ac.uk/schools/business/undergraduate/
Glasgow Caledonian	Business Management (8J9J)	4FT	£ 15,200	A Level: BCC	For more courses, please visit https://www.gcu.ac.uk/aboutgcu/academic/schools/gsbs/study/undergraduate
	International Business (N120)			TP: 114 GCSE English and Maths 4/C IB: 29 inc Maths & English	
Goldsmiths	Business Management (N200)	3FT	£ 21,200	A Level: BBB	For more courses, please visit https://www.gold.ac.uk/institute-management-studies/
	Management with Marketing (NN25)			IB: 33 with three HL subjects at 655	
	Marketing (N500)				

Name of University	Course Title & UCAS Code	Course Duration	Tuition fees (£) per academic year 2025	Entry Requirements	Remarks
Greenwich	Business Management (N210)	3FT / 4SW	£ 17,500	TP: 112 GCSE English Language or Literature and Maths at C / 4	For more courses, please visit https://www.gre.ac.uk/bus
	Business Studies (N107)				
	International Business (N120)				
	Marketing and Brand Management (N510)				
	Human Resource Management (N600)				
Heriot-Watt	International Business Management (Accelerated) (N23Y)	3FT	£ 20,536	For N23Y Year 2 entry: A Level: ABB incl one of Acct, Business, Economics or Maths IB: 34 including HL Business Management at 5	For more courses, please visit https://www.hw.ac.uk/ebs/study/undergraduate.htm
	Marketing (M1MK)	4FT	£ 19,456	For N202 & M1MK: Year 1 entry; A Level: ABB – BBC IB: 29	
	International Business Management (N202)			Year 2 entry: A Level: ABB incl one of Acct, Business, Economics or Maths IB: 34 including HL Business Management at 5	
Hertfordshire	Business and Accounting (NN4D)	3FT / 4SW	£ 15,965	A Level: BBB – BBC	For more courses, please visit https://www.herts.ac.uk/study/schools-of-study/business/subject-areas
	Business and Finance (NN13)			GCSE English and Maths at C / 4	
	Marketing (N500)			TP: 112 – 120	
	Business Management (N100)				
Huddersfield	Business Management (N223)	3FT / 4SW	£ 16,500	A Level: BBB – BBC	For more courses, please visit https://www.hud.ac.uk/subjects/business/
	Marketing (N500)			TP: 112 – 120	

Name of University	Course Title & UCAS Code	Course Duration	Tuition fees (£) per academic year 2025	Entry Requirements	Remarks
Hull	Business Management (N100) Marketing (N500) BSc Financial Management (N340)	3FT / 4SW	£ 17,500	A Level: BBC TP: 112 IB: 28	For more courses, please visit https://www.hull.ac.uk/faculties/subjects/business-and-management
Keele	Business Management (N202) Business Management and Human Resources (NN69) Business Management and Marketing (NN25)	3FT / 4FT	£ 17,700	A Level: BBC GCSE Maths at C / 4 IB: 29 or 554 in three HL	Other courses: Business Management and Accounting/Data Science/Economics/Finance/Geography etc... For more courses, please visit https://www.keele.ac.uk/study/undergraduate/subjectareas/businessandmanagement/
Kent	Business and Management (N206) Business and Marketing (N500)	3FT / 4SW	£ 20,700	A Level: ABB TP: 112 - 128 IB: 32 or 665 at HL	For more courses, please visit https://www.kent.ac.uk/kent-business-school
King's	Business Management (N200 / N201) Economics and Management (LN12 / LN14) International Management (N290)	3FT / 4SW 4FT	£ 35,800	A Level: A*AA, to include at least one humanities or social science subject GCSE Maths at B/6 IB: 38 inc TOK / EE and 19 from HL, include at least one humanities or social science subject at HL 6 GCSE Maths requirement can be met via IB SL at 5, if not studied / studying at HL	For more courses, please visit https://www.kcl.ac.uk/business/undergraduate/courses
Kingston	Business and Accounting (N140 / N141) Business Management (N221 / N223) Business Management and Marketing (N297 / N298)	3FT / 4SW	Y1: £ 18,500 Y2: £ 19,200 Y3: £ 19,900	TP: 112 – 128 from at least 2 AL subjects	Please note that Marketing Management is still subject to validation. For more courses, please visit https://www.kingston.ac.uk/faculties/faculty-of-business-and-social-sciences/

Name of University	Course Title & UCAS Code	Course Duration	Tuition fees (£) per academic year 2025	Entry Requirements	Remarks
Lancaster	Accounting and Management (NN24 / NN25) Management and Human Resources (N600 / N602) Business Management (N102 / N104) Marketing (N500/N505)	3FT / 4SW	£ 25,450	A Level: ABB GCSE English Language at C / 4 and Maths at B / 6 IB: 35 and 16 from 3 HL	For more courses, please visit https://www.lancaster.ac.uk/lums/undergraduate/our-courses/
Leeds	Business Management (N200) International Business (N120)	3FT / 4SW	£ 28,250	A Level: AAA 5 GCSEs at C / 4 incl English Language at B / 6 and Maths at B / 5 IB: 35 with 17 points from HL subjects incl HL Maths at 4 or SL Maths at 5 and SL English A or HL English B at 6 or HL English A at 5	For more courses, please visit https://business.leeds.ac.uk/undergraduate
Leicester	Business and Management (N200) Human Resource Management (N600) Marketing (N500)	3FT / 4SW	£ 19,700	A Level: ABB GCSE English Language and Maths at C / 4 IB: 30 with 3 in SL Maths Analysis and Approach or 3 in HL Maths or 4 in SL Maths Application and Interpretation if not at GCSE grade C/4. Must include 4 in English A or 5 in English B if GCSE English Language not at C/4	For more courses, please visit https://le.ac.uk/study/business-management
Lincoln	Business (N100) Business and Management (NN12) Business and Finance (NN13) Business and Marketing (NN1M)	3FT / 4SW	£ 16,600	A Level: BBC GCSE 3 GCSEs at C / 4 incl English and Maths TP: 104 from 2 A-Level IB: 29	For more courses, please visit https://www.lincoln.ac.uk/lbs/undergraduate/courses/

Name of University	Course Title & UCAS Code	Course Duration	Tuition fees (£) per academic year 2025	Entry Requirements	Remarks
Liverpool	Business Management (N100 / N101)	3FT / 4SW	£ 25,000	A Level: AAB	For more courses, please visit https://www.liverpool.ac.uk/management/study/undergraduate/
	International Business (N120 / N12) Marketing (N500 / N501)			GCSE English at C / 4 and Maths at C / 5 IB: 35 with no score lower than 4	
Liverpool John Moores	Business Management (N200)	3FT / 4SW	£ 17,750	A-Level: ABB – BBC	For more courses, please visit https://www.ljmu.ac.uk/about-us/faculties/faculty-of-business-and-law/liverpool-business-school/courses
	Business with International Business Management (NN12)			GCSE English Language and Maths at C / 4	
	Human Resource Management (N600)			TP: 112 – 128 IB: 28	
	Marketing (N500)				
London South Bank	Business Management (Finance Pathway) (N237)	3FT / 4SW	£ 17,600	A Level: BBC	For more courses, please visit https://www.lsbu.ac.uk/our-schools/business/study/subjects
	Business Management (Accounting Pathway) (N235)			TP: 112	
	Business Management (N203)				
	Marketing with Advertising and Digital Communications (N573)				
Loughborough	Management (N202/N200)	3FT / 4SW	£ 26,500	A Level: AAB	For more courses, please visit https://www.lboro.ac.uk/departments/sbe/study/undergraduate/
	Marketing and Management (NN53/NN52)			A minimum of 5 GCSEs at 9 – 6 (A* – B) including English Language at B / 6 And Maths grade C / 5 IB: 35 and 665 in HL	
LSE	Management (N200)	3FT	£ 34,000	A Level: AAA incl A in Maths Some GCSEs at A* – A or 7 – 8 / 9 and English Language and Maths at B / 6 IB: 38 with 766 in HL incl Maths	For more courses, please visit https://www.lse.ac.uk/management/study/undergraduate

Name of University	Course Title & UCAS Code	Course Duration	Tuition fees (£) per academic year 2025	Entry Requirements	Remarks
Manchester	Management (N201)	3FT	£ 31,000	A Level: AAA	For more courses, please visit https://www.manchester.ac.uk/study/undergraduate/courses/2024/
	Management (Accounting and Finance) (NN24 / NN25)	3FT / 4SW		GCSE English Language and Maths at B / 6	
	Management (Human Resources) (N600 / N601)			IB: 36 with 666 at HL subjects and SL English A at 4 or SL English B at 6 if no GCSE English Language at B / 6 and SL Maths at 5 if no GCSE Maths at B / 6	
	Management (Marketing) (N2N5 / N2N6)				
Manchester Metropolitan	Business Management (N201)	3FT / 4SW	£ 20,000	A Level: BBB	For more courses, please visit https://www.mmu.ac.uk/business-school/study/undergraduate/
	Marketing (N503)			GCSE English Language and Maths at C / 4 TP: 120 – 128 IB: 30	
Middlesex	Business Management (N200)	3FT / 4SW	£ 16,600	A Level: BBC	For more courses, please visit https://www.mdx.ac.uk/courses/business
	Business Management (Human Resource Management) (N601)			TP: 112	
	Business Management (Finance) (N302)			GCSE English at C / 4	
	Business Management (Marketing) (N504)				
Newcastle	Business Management (N200)	3FT / 4SW	£ 24,400	A Level: AAB	For more courses, please visit https://www.ncl.ac.uk/undergraduate/subjects/business-management/
	International Business Management (N121 / N120)			GCSE English Language or Literature and Maths at B / 6 if not taken at AS or AL IB: 34 with SL English and Maths at 5 if no HL	
Northampton	Marketing (N500)	3FT / 4SW	£ 15,700	A Level: BCC	For more courses, please visit https://www.northampton.ac.uk/courses/
	Business Management (N124)				
	Human Resource Management (N600)				

Name of University	Course Title & UCAS Code	Course Duration	Tuition fees (£) per academic year 2025	Entry Requirements	Remarks
Northumbria	Business and Human Resource Management (N110)	3FT / 4SW	£ 20,950	TP: 112	For more courses, please visit https://www.northumbria.ac.uk/study-at-northumbria/subject-landing-pages/business/
	Business and Marketing (N660)			GCSE English Language and Maths at C / 4	
	Business Management (N205)				
	Business and Entrepreneurship (N155)				
Nottingham	Finance, Accounting and Management (NN34)	3FT	£ 23,000	A Level: AAA	For more courses, please visit https://www.nottingham.ac.uk/business/study-with-us/ug/index.aspx
	International Management (N20A)			GCSE Maths at B / 6	
	Management (N200)			IB: 34 or 666 in three HL subjects and 5 in SL or 4 in HL Maths	
Nottingham Trent	Business (N101 / N100)	3FT / 4SW	£ 18,250	For N101 / N100: TP: 112	Joint honours degrees: Business Management and Accounting and Finance/Economics/Entrepreneurship/Human Resources/Marketing
	Marketing (N501 / N502)			GCSE English and Maths at C / 4 For N501 / N502: TP: 120	
Oxford	Economics and Management (LN12)	3FT	£ 38,550	A Level: A*AA incl Maths at A* or A	Required to sit the TSA (S1) Admissions Test.
				IB: 39 incl core points with 766 at HL incl HL Maths at 7 or 6	
Oxford Brookes	Business and Management (N200)	3FT / 4SW	£ 17,100	A Level: BBC	For more courses, please visit https://www.brookes.ac.uk/business/undergraduate
	International Business Management (N120)			TP: 112 IB: 30	

Name of University	Course Title & UCAS Code	Course Duration	Tuition fees (£) per academic year 2025	Entry Requirements	Remarks
Plymouth	Business Management (N203) Marketing (N500) Maritime Business (N108)	3FT / 4SW	£ 17,600	TP: 112 from at least 2 AL subject GCSE English and Maths at grade C / 4 IB: 28 – 32 include 4 at any subject at HL + Maths & English HL – 4 or SL 5	For more courses, please visit https://www.plymouth.ac.uk/schools/plymouth-business-school/courses
Portsmouth	Business and Human Resource Management (NN16 / NN10) Business and Management (NN21 / NN20) Entrepreneurship and Business (N150 / N155) Marketing (N500 / N505)	3FT / 4SW	£ 17,200	A Level: BBB – BBC TP: 112 – 120 from three AL subjects IB: 29	For more courses, please visit https://www.port.ac.uk/study/subject-area/business-management-and-marketing#undergraduate-degrees
Queen's Belfast	Business Management with Placement (N202)	4SW	£ 20,800	A Level: ABB and GCSE Maths at B / 6 IB: 33 with 655 at HL and SL Maths at 5 if not at HL or GCSE Maths at B / 6	For more courses, please visit https://www.qub.ac.uk/schools/queens-business-school/study/undergraduate/
Queen Margaret	Business Management (N100) International Hospitality, Tourism and Events Management (N890)	4FT	£ 9,250	Year 1 entry: A Level: BCC GCSE English and Maths are preferred IB: 28 SL English at 5 and Maths is preferred Year 2 entry: A Level: BBB in relevant subjects	Joint honours degrees: Business Management with Analytics/Digital Marketing/Finance/Human Resource Management For more courses, please visit https://www.qmu.ac.uk/study-here/undergraduate-study/undergraduate-subject-overviews/business-international-hospitality-tourism-and-events-management/
Queen Mary	Business Management (NN12 / NN16) Marketing and Management (4G44 / 4G46)	3FT / 4SW	£ 27,950	A Level: AAA 5 GCSEs incl English and Maths at C / 4 IB: 36 with 666 at three HL subjects and SL Maths at 4	For more courses, please visit https://www.qmul.ac.uk/busman/study/undergraduate/undergraduate-programmes/

Name of University	Course Title & UCAS Code	Course Duration	Tuition fees (£) per academic year 2025	Entry Requirements	Remarks
Ravensbourne	Business Management (N100)	3FT	£ 17,000	A Level: BCC GCSE English at C / 4 IB: 24	For more courses, please visit https://www.ravensbourne.ac.uk/study/undergraduate/business-and-management
	Advertising and Brand Design (NW52)				
	Digital Marketing (N500)				
Reading	Accounting and Management (NN24 / NN42)	3FT / 4SW	£ 25,850	A Level: ABB GCSE English and Maths at B / 5 IB: 32 including SL English and Maths at 4	Other courses: Business and Management with Data Analytics & Digital Business/Entrepreneurship/Marketing International Business and Management with a Modern Language For more courses, please visit https://www.henley.ac.uk/study/undergraduate
	Business and Management (N100 / N101)				
	International Business and Management (N120 / N110)				
Robert Gordon	Business and Management (N201)	4FT / 4SW	£ 18,300	Year 1 entry: A Level: BCC IB: 27 Year 2 entry: A Level: ABB IB: 31	For more courses, please visit https://www.rgu.ac.uk/study/types-of-study/undergraduate-courses
	Business with Marketing (N2N5)				
	Business with Human Resource Management (N2N6)				
Royal Holloway	Business and Management (N200 / N201)	3FT / 4SW	£ 22,900	A Level: ABB – BBB and at least 5 GCSEs incl English and Maths at A* – C / 9 – 4 IB: 32 with 655 at HL	For more courses, please visit https://www.royalholloway.ac.uk/research-and-teaching/department-schools/business-and-management/
	Economics and Management (LN12 / LN21)				
	Management with Marketing (N2N5 / NN25)				
	Management with Accounting (N2N4 / NN24)				
	Management with Human Resources (N2N6 / NN16)				

Name of University	Course Title & UCAS Code	Course Duration	Tuition fees (£) per academic year 2025	Entry Requirements	Remarks
Salford	Business Management (N100)	3FT / 4SW	£ 15,720	A Level: BBC – BCC	For more courses, please visit https://www.salford.ac.uk/salford-business-school/undergraduate-courses-in-business-finance-and-law
	Business with Human Resource Management (N1N6)			TP: 104 – 112	
	Business Management with Marketing (N1N5)			GCSE English and Maths at C/4 IB: 30	
Sheffield	Business Management (N200)	3FT / 4SW	£ 23,810	A Level: AAB GCSE Maths at B/6 IB: 34 with A in social science based extended essay	Joint honours degrees: Business or Accounting with another subject Business Management with a language For more courses, please visit https://www.sheffield.ac.uk/management/undergraduate/courses
Sheffield Hallam	Business Studies (BB09)	3FT / 4SW	£ 17,155	A Level: BBB – BBC	For more courses, please visit https://www.shu.ac.uk/courses/business-and-management?page=0&perPage=5&query=&yearOfEntry=2024%2F25
	Business Management (A097)			GCSE English Language at C / 4 and Maths at D / 4	
	Marketing (N500)			TP: 112 – 120 incl at least 48 from 2 A Level	
SOAS	Marketing Communications and Advertising (N590)	3FT	£ 22,870	A Level: ABB and GCSE Maths at B / 6 if no AL Maths	For more courses, please visit https://www.soas.ac.uk/about/schools-and-departments/schools-finance-and-management
	Management (4G55)			IB: 32 with 555 at HL	
Solent	Business Management (BM01)	3FT	£ 17,750	TP: 104 – 120 from at least 2 AL subjects	Joint honours degrees: Business Management with Digital Technologies/Finance/Marketing For more courses, please visit https://www.solent.ac.uk/faculties-and-schools/solent-business-school

Name of University	Course Title & UCAS Code	Course Duration	Tuition fees (£) per academic year 2025	Entry Requirements	Remarks
Southampton	Business Entrepreneurship (N102 / N103) Business Management (N202 / N203) Marketing (N501 / N500)	3FT	£ 24,200	A Level: AAB IB: 34 with 17 at HL	For more courses, please visit https://www.southampton.ac.uk/study/subjects/business-accounting-finance-marketing
South Wales	Business and Management (N201 / N202) Human Resource Management (N602 / N604) International Business and Management (N210) Marketing (N507 / N508)	3FT / 4SW	£ 15,850	A Level: CCC 5 GCSEs incl English and Maths at C / 4 TP: 96	For more courses, please visit https://www.southwales.ac.uk/courses/faculty/CI/?faculty_title=Faculty+of+Creative+Industries
St Andrews	Management (N200 / N201) BSc (Hons) / MA (Hons)	4FT	£ 31,670	A Level: AAA GCSE English Language and Maths at B/5 IB: 38 with 666 at HL	Joint honours degrees: Management and Computer Science/Economics/Geography/ Sustainable Development/Art History For more courses, please visit https://www.st-andrews.ac.uk/subjects/management/
Stirling	Business Studies (N100) Human Resource Management (N600) Management (N200) Marketing (N500)	3FT 4FT	£ 18,400	Year 1 entry: A Level: BBB IB: 28 Year 2 entry: A Level: ABB IB: 32	More joint honours degrees in the university website For more courses, please visit https://www.stir.ac.uk/subjects/business-and-management/
Strathclyde	Business (N100) International Business (N120)	4FT	£ 21,500	A Level: ABB – BBB GCSE English Language or Literature and Maths at B / 6 IB: 30 – 32 (no subject below 5 incl SL English and Maths at 5 or HL Maths at 5 for combinations with Accounting or Maths and Stat)	For more courses, please visit https://www.strath.ac.uk/business/undergraduate/studywithus/

Name of University	Course Title & UCAS Code	Course Duration	Tuition fees (£) per academic year 2025	Entry Requirements	Remarks
Sunderland	Business and Management (NN2C)	3FT / 4SW	£ 16,500	A Level: BBC 3 GCSEs incl English and Maths at C / 4 TP: 112	For more courses, please visit https://www.sunderland.ac.uk/study/business-and-management/
	Business and Human Resource Management (NN1P)				
	Business and Marketing Management (NN1N)				
Surrey	Business Management (N200 / N201) International Business Management (N120 / N121)	3FT / 4SW	£ 22,800	A Level: ABB GCSE English and Maths at C / 4 IB: 33 with either SL or HL English A at 4 or SL English B at 6 or HL English B at 5 and SL or HL either Maths at 4	Other courses: Business Management with Business Analytics/Entrepreneurship/HRM/Marketing/Language For more courses, please visit https://www.surrey.ac.uk/business-school/study/undergraduate-courses
Sussex	Business and Management Studies (NN12 / NN1F) Computing for Business and Management (GN42 / G44F) Finance and Business (NN13 / NN1H) Marketing and Management (NN25 / NN2M)	3FT / 4SW	£ 22,575	A Level: ABB GCSEs at A* – C or 9 - 4 incl Maths at C / 4 IB: 32	For more courses, please visit https://www.sussex.ac.uk/study/undergraduate/
Swansea	Business Management (N100 / N103) Business Management (Human Resource Management) (N600 / N601) International Tourism Management (N800 / N802) Marketing (N500 / N502)	3FT / 4SW	£ 19,600	A Level: ABB – BBB TP: 120 – 128 IB: 32	For more courses, please visit https://www.swansea.ac.uk/som/

Name of University	Course Title & UCAS Code	Course Duration	Tuition fees (£) per academic year 2025	Entry Requirements	Remarks
Teesside	Business with Accounting (N242) Business Management (N200) Marketing (N502)	3FT / 4SW	£ 17,000	TP: 80 – 104 from at least 2 AL GCSEs incl Maths at C / 4	For more courses, please visit https://www.tees.ac.uk/schools/tubs/study.cfm
UAL	Fashion Management (WN30) Fashion Marketing (9K55)	3FT / 4SW	£ 29,990	A Level: Passes at C in at least 3 subjects and passes in at least 6 GCSEs at B / 6 including English and Maths TP: 112 IB: 25	For more courses, please visit https://www.arts.ac.uk/subjects/business-and-management-and-science
UCL	BSc Management Science (N991)	3FT	£ 39,800	A Level: A*AA incl Maths at A*. Science or Social Sciences are preferred. GCSE English Language at B / 6 and Maths at C / 4. IB: 39 with 19 in three HL subjects incl Maths at 7 with no score below 5. HL Maths: Analysis and Approaches and Maths: Applications and Interpretation can be accepted.	For more courses, please visit https://www.mgmt.ucl.ac.uk/undergraduate-study
Warwick	International Management (N290) Management (N200 / N20Y)	4SW 3FT / 4SW	£ 33,520	A Level: A*AA GCSE English at B/6, one Humanities / Social Sciences subject at A / 7 and Maths at A / 7 IB: 38	Joint honours degrees: Business Studies with Computer Science/German/Global Sustainable Development/Physics For more courses, please visit https://www.wbs.ac.uk/courses/undergraduate/
Westminster	Business Management (N900) Marketing Management (N502)	3FT / 4SW	£ 17,000	A Level: BBC GCSE English Language and Maths C / 4 TP: 112 IB: HL English and Maths at 4	Other courses: Business Management and Digital Business/Entrepreneurship/ Human Resource Management/Marketing For more courses, please visit https://www.westminster.ac.uk/about-us/our-university/our-colleges-and-schools/westminster-business-school

Name of University	Course Title & UCAS Code	Course Duration	Tuition fees (£) per academic year 2025	Entry Requirements	Remarks
Winchester	Business Management (NP29)	3FT / 4SW	£ 16,700	A Level: BBB – BCC TP: 104 – 120 GCSE English and Maths C / 4 IB: minimum 2 HL at 4	For more courses, please visit https://www.winchester.ac.uk/study/subjects/Business-and-Marketing/
York	BA Business and Management (N200 / N203) BSc Business and Management (N202 / N204) Accounting, Business Finance and Management (NN42 / NN4F) Marketing (N500 / N501)	3FT / 4SW	£ 25,800	A Level: AAB GCSE Maths at C / 4 IB: 35	For more courses, please visit https://www.york.ac.uk/business-society/study/management-undergraduate/

Entry Requirements

Universities are happy to accept 3 A Levels subjects or a combination of 3 HL and 3 SL IB subjects from Arts, Humanities, Maths and Sciences. Many competitive universities will require Maths as one of the 3 A Levels subjects, or HL Maths as one of the 6 HL and SL IB subjects. General Studies and Critical Thinking are not accepted.

Selectors' Attitude

Your UCAS application is always considered as a whole; taking into account your qualifications, experience, personal statement and reference.

Some universities will look for clear mathematical aptitude and capability in the application of students.

Personal Statement

Students are expected to demonstrate interest in the world of business and management. Aptitude for mathematics is essential, particularly to some competitive universities.

UCAS has implemented a system called the UCAS Similarity Detection Service to verify the authenticity of Personal Statements. If significant amounts of similarities are detected and the Verification staff decides to flag a personal statement, the university and the applicant will be notified via email by UCAS.

03



LOOKING AHEAD

A day in the life of a Management & Business Studies student

Students will study theories via lectures. Further reading is to follow before preparing for discussion on hypothetical business and management problems in tutorials. The quantitative subjects are mainly for learning to solve sums. The mode of learning is quite similar for every subject. However, students would also spend time writing essays and dissertation to be submitted by the end of the semesters in addition to preparing for exams.

Career Path

Graduates of Management and Business Studies degrees enjoy a wide variety of career opportunities. They can go to become business and management analysts, entrepreneurs, researchers, education advisors and more. To be senior managers, graduates usually will continue to further their studies to master's level in order to gain more in-depth business and management knowledge after some years of working experience. This will help them to handle more complex business and management problems.

Examples of graduates' job roles include: Business Analyst, Market Researcher, Entrepreneur, Management Trainee, Sales Associate, HR Coordinator, and more.



“How can MABECS help me?”



If all that information is making you feel overwhelmed, don't worry. You're not alone. Countless students have felt the same way and they've found it helpful to consult MABECS for their UK degree applications. For an overview of our services, check out the Inside Front Cover page.

Here is how your MABECS education advisor can help you in detail:

1

BEFORE APPLYING

MABECS provides detailed information on:

- UK universities' environment, fees, and facilities
- course structure, content and specialisation
- entry requirements and university standards
- specific university's research ratings and teaching quality assessments



We can also recommend suitable and relevant universities based on your academic results and preferences.

3

PRE-DEPARTURE HELP

MABECS provides guidance on:

- visa applications
- accommodation arrangements
- flight bookings

2

APPLICATION

MABECS provides detailed information on:

- undergraduate degree application explained from start to end
- personal guidance for your Personal Statement
- mock interviews
- monitoring the progress of your application
- providing advice at stages where important decisions need to be made
- being the intermediary (middle person) between you and universities if our assistance is required
- counselling sessions with visiting UK admissions tutors and university representatives
- IELTS registration with the British Council

About Us

MABECS was set up in 1985 to assist students in Malaysia to find suitable places at universities in the United Kingdom.

Since 1985, students we have counselled have successfully enrolled in top UK universities – both at undergraduate and postgraduate levels.

Whether you're an individual student seeking counselling for your UK degree application, or an education institution hoping to achieve the same for your pre-university students, MABECS is here to help.



Visit our website at www.mabecs.com for a quick overview of how MABECS helps students from start to end of their UK degree application process. You'll also find many helpful articles on studying in the UK, including real student stories!

UK degree applications made easy

MABECS SDN BHD 198501011041 (143492v)

B-07-03 Block B West, PJ8
No. 23 Jalan Barat, Seksyen 8
46050 Petaling Jaya
Selangor, Malaysia.

T +603 7956 7655
M +6017 339 7453
E enquiries@mabecs.com
W www.mabecs.com

Monday to Friday:
9:30am to 4:30pm

**Saturdays, Sundays and public
holidays:** Closed



UK degree applications made easy.

We take care of everything in your UK degree application with your cooperation - free of charge.



Student-centered

Our strong student-centered approach to counselling, means that we give students the fullest possible information on all available options, to help them make sensible decisions.



Free Consultation

Advice, information and assistance with applications, are given free of charge and our education advisors are always ready to sort out any problems that may arise, and to brief you on preparations for travel to the UK.



Accessible

Our friendly multi-racial, open-access office, can be easily reached by public transport, and no appointment is necessary to drop in and browse through the reference library, talk to a education advisor, or complete and send an application.