

ATMOSPHERE

I

MOVECHO®

THE PERVADING TONE OR MOOD OF A
PLACE, SITUATION, OR CREATIVE WORK.



KNOW-HOW

- 1. KNOWLEDGE OF HOW TO DO SOMETHING SMOOTHLY AND EFFICIENTLY;
- 2. EXPERTISE.

CARTIER

Cartier

Cartier

Place du
Lac

REYL

FENDI

















CUSTOMIZATION

1. TO BUILD, FIT, OR ALTER ACCORDING
TO INDIVIDUAL SPECIFICATIONS.

CHAUMET

CHAUMET

















ACCURACY

1. THE CONDITION OR QUALITY OF BEING TRUE, CORRECT, OR EXACT;
2. FREEDOM FROM ERROR OR DEFECT;
3. PRECISION OR EXACTNESS; CORRECTNESS.



JNCQUOI



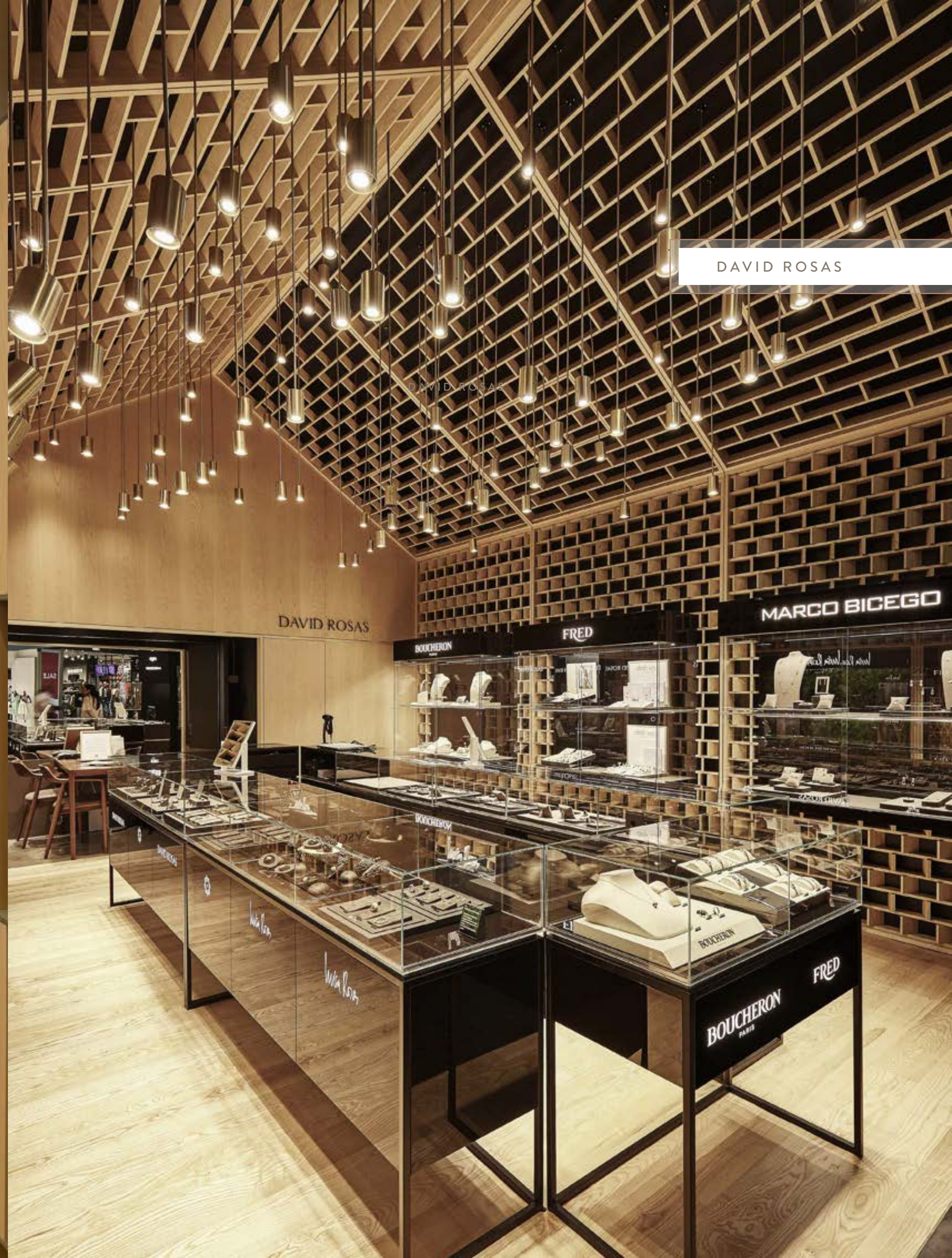




EFFICIENCY

1. COMPETENCY IN PERFORMANCE;

2. HOW WELL AN INDUSTRIAL PROCESS, FACTORY, OR BUSINESS WORKS SO THAT IT PRODUCES AS MUCH AS POSSIBLE FROM THE TIME, MONEY, AND RESOURCES THAT ARE PUT INTO IT.





DAVID ROSAS

DAVID ROSAS

THOMAS PIGET

Luisa Rosas

Luisa Rosas

NATURALLY
INSPIRED
FORMS





DE LEMOS





CROWNE PLAZA





SOPHISTICATION

1. HAVING CHARACTER AND TASTES
BASED ON INTELLIGENCE AND
WORLDLY EXPERIENCE;
2. A QUALITY OF REFINEMENT

JO MALONE

JO MALONE
LONDON



Jo MALONE
LONDON



LA MER

LA MER

LA MER

clé de peau
BEAUTÉ



WE ARE A PORTUGUESE-SWISS COMPANY WITH 30 YEARS OF EXPERIENCE IN MANUFACTURING CUSTOMIZED FURNITURE FOR COMMERCIAL AND SERVICE SPACES. WE WORK WITH STATE-OF-THE-ART MACHINERY AND 220 SKILLED AND QUALIFIED WORKERS SPREAD ACROSS DIFFERENT FIELDS OF ACTION: PROJECT MANAGEMENT, PRODUCT ENGINEERING, PROTOTYPING, PRODUCTION, LOGISTICS AND AFTER SALES SERVICE PROVIDING AN EFFICIENT RESPONSE THROUGHOUT THE ENTIRE PROCESS.

WE STAND FOR MULTIDISCIPLINARITY BETWEEN PROJECT, PRODUCTION, AND MANUFACTURING SECTORS. IT IS NOT JUST A MATTER OF EQUIPPING A PLANT WITH MACHINERY AND WHAT IT ALLOWS FOR, BUT RATHER OF GATHERING AND PROVIDING THE RIGHT CONDITIONS FOR THAT PLANT TO BE ACTUALLY EFFECTIVE, WHICH IMPLIES THE EMPLOYEES' QUALIFICATION THAT TURN THE COMPANY INTO A LIVE ORGANISM, ABLE TO GIVE RESPONSE, ABLE TO BE.

TO CREATE UNIQUE AND INNOVATIVE SOLUTIONS, WE RELY ON AN INTERNATIONAL SUPPLIER NETWORK FROM DIFFERENT BUSINESS SECTORS SUCH AS WOOD, METAL, FABRIC OR GLASS. OUR PARTNERS HELP US TO PROVIDE FLEXIBLE AND QUICK RESPONSES TO OUR CUSTOMERS. FURTHERMORE, OUR PARTNERSHIP DOES NOT END WITH THE ON-SITE ASSEMBLY AS WE GUARANTEE CONSTANT MAINTENANCE SUPPORT.

OUR COMPANY IS STAFFED BY AN EXPERIENCED TEAM SUPPORTED BY THE MOST RECENT TECHNOLOGY. HORIZONTAL STORAGE SYSTEM COMBINED WITH SAW AND EDGE BANDING TECHNOLOGY, CNC MACHINES WITH 5-AXIS AND EDGE BANDING TECHNOLOGY, EDGE BANDERS WITH LASER EDGING. HIGHLIGHT ALSO FOR THE 9-AXIS ROBOT AND A CELL EQUIPPED WITH A HYBRID ROBOTIC SYSTEM WHICH INTEGRATES SUBTRACTIVE AND ADDITIVE MANUFACTURING TECHNOLOGY - DEVELOPED EXCLUSIVELY FOR MOVECHO, - 5-AXIS WATERJET CUTTING MACHINE, PAINT BOOTHS FOR DIFFERENT TYPES OF PAINTING, INCLUDING HIGH-GLOSS.

THIS TECHNOLOGIC EVOLUTION HAS TO BE COMPLEMENTED BY AN ATTENTIVE LOOK AT THE SOCIAL EVOLUTION. THE COMMITMENT TO THE CERTIFICATION OF CONTINUOUS IMPROVEMENT OF THE ACTIVITIES WITH QUALITY MANAGEMENT SYSTEMS (ISO 9001:2015) AND THE CERTIFICATION OF SAFETY, HYGIENE AND WORKPLACE HEALTH MANAGEMENT SYSTEMS IN THE FACILITIES (OHSAS 18001 STANDARD) IS AN EXPRESSION OF INTEREST IN THE ACCURACY AND EFFECTIVENESS OF PRODUCTION, AS WELL AS A TOKEN OF THE AWARENESS THAT A COMPANY IS, IN ITSELF, A SOCIAL COMMUNITY. CONDITIONS DETERMINE RESULTS AND THAT IS WHY THE DIFFERENT PARTS FORMING A COMPANY SHOULD TAKE PART, IN HARMONY, IN A WHOLE THAT ONE SHOULD PRESERVE SO THAT WE CAN BE WHAT WE ACTUALLY WANT TO BE.

WE PRODUCE DESIGN OBJECTS IN PARTNERSHIP WITH ARCHITECTS AND DESIGNERS THAT IDENTIFY THEMSELVES WITH OUR APPROACH. THESE PARTNERSHIPS FOSTER THE RESEARCH AND DEVELOPMENT COMPONENT TOWARDS CHALLENGES THAT PROMOTE THAT RESTLESSNESS THAT A COMPANY, WHICH PURSUES A PERMANENT CONFRONTATION WITH LIMITS CONTINUOUSLY REDEFINING THEMSELVES, HAS TO BE ABLE TO FOLLOW AND ANTICIPATE. RESPONSE CAPACITY IS A CONSTANT CONCERN IN THE SAME WAY AS THE BUILDING UP OF AN IDENTITY IN A FIELD WITH SUCH DIVERSITY. IDENTITY IS ALSO THE RESULT OF DIFFERENTIATION, OF THE DESIRE TO TAKE A PART IN THE WORLD AND, AT THE SAME TIME, TO TAKE PART IN THE RECOGNITION OF THE PLACE ONE OCCUPIES, OF BEING AND OF WANTING TO BECOME. A RECOGNISABLE PLACE, AT THE SAME TIME INNOVATIVE AND SURPRISING, IS NOT A CONTRADICTIONARY ONE; IT IS, INDEED, THE RESULT OF AN ACCURATE, EXACT AND OBJECTIVE WORK. UNDERSTAND WHERE TO BE, WHAT TO WANT, WHAT TO DO AND HOW TO DO IT.