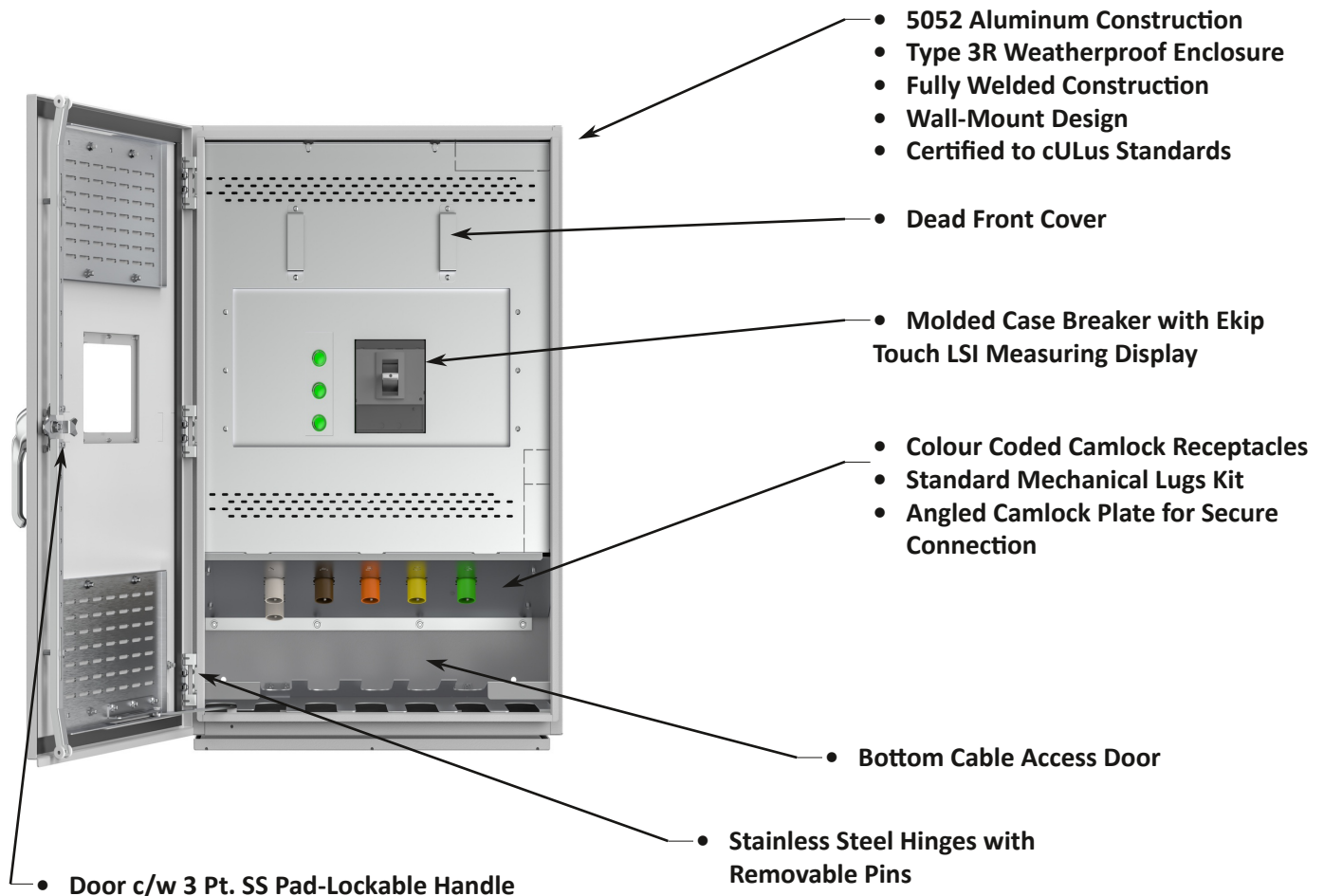


Connection Cabinets

FFCS-C3 Series



The FFCS-C3 Series Company Switch Connection Cabinets provide a quick and safe power connection point for portable event power, trailers, amusement park setups, food trucks, performance theatre, arena/stadium, and movie set trailers. These units are equipped with a molded case breaker, allowing temporary loads to receive power quickly, safely, and providing overcurrent protection simultaneously. They also come complete with colour-coded camlock receptacles, configurable to suit site requirements allowing for plug-and-play connection, an in-phase measurement display, operation indicator lights, and an operator handle. Dual neutrals are optional for redundancy. Assemblies are available with up to 400A mains and are certified to cULus Standards. Full custom options available, consult factory.



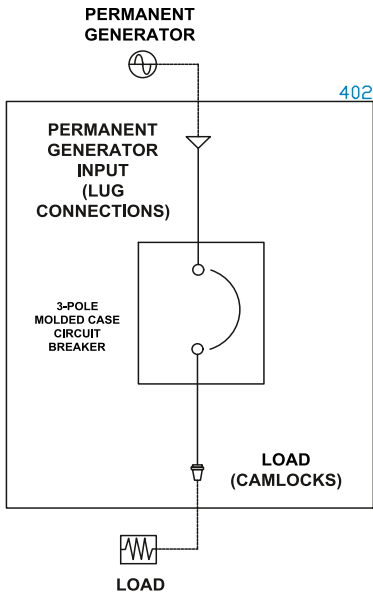
Rev 2.5

Connection Cabinets

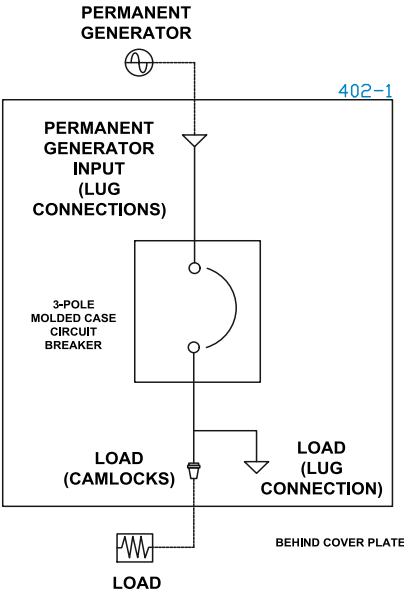
FFCS-C3 Series



One-Line Diagram



SINGLE BREAKER DOCKING STATION



SINGLE BREAKER DOCKING STATION
INCLUDES OPTIONAL MECHANICAL LUGS

Connection Cabinets

FFCS-C3 Series



Product Selector

FFCS - C3 - - - - - - - PART NO.

FFCS - C3 - 400 - LSI - U3 - L - ALU - LA - ACC EX.

AMPS

100A
200A
400A
600A
800A
1200A

C.B. TRIP UNIT

LSI = Ekip Touch LSI

CONNECTION

G = TEMP INPUT
L = LOAD (OUTLET)
+ LUGS (OPTIONAL)

ENCLOSURE CONSTRUCTION

ALU = 5052 ALUMINUM
304 = 304 STAINLESS STEEL
316 = 316 STAINLESS STEEL

ACCESSORIES (ACC)

AXX = 400A CAMLOCK CABLE SET (XX = FT)
AA = CAMLOCK SNAP COVERS
AB = CUSTOM POWDER COAT COLOUR
AC = HEATER W/ STAT
AD = GFCI RECEPTACLE
AF = TERMINAL STRIP
AG = PHASE SEQUENCE MONITOR
AH = POWER METER
AI = MICRO-SWITCH
AJ = LEG STAND SET
BE = BOTTOM ENTRY
SPD = SURGE SUPPRESSION DEVICE
VI = VOLTAGE INDICATOR
BLANK = NONE
FOR MORE DETAILS CONTACT US

USA

VOLTAGE	A	B	C	N	G
U1 = 120/240V (1PH + N + G)	BLK	RED		WHT	GRN
U2 = 240V (3PH + G)	BLK	RED	BLU		GRN
U3 = 208Y/120V (3PH + N + G)	BLK	RED	BLU	WHT	GRN
U4 = 480Y/277V (3PH + N + G)	BRN	ORG	YEL	WHT	GRN
U5 = 480V (3PH + G)	BRN	ORG	YEL		GRN

CANADA

VOLTAGE	A	B	C	N	G
C1 = 120/240V (1PH + N + G)	RED	BLK		WHT	GRN
C2 = 240V (3PH + G)	RED	BLK	BLU		GRN
C3 = 208Y/120V (3PH + N + G)	RED	BLK	BLU	WHT	GRN
CU4 = 480Y/277V (3PH + N + G)	RED	BLK	BLU	WHT	GRN
CU5 = 480V (3PH + G)	RED	BLK	BLU		GRN
C4 = 600Y/347V (3PH + N + G)	RED	BLK	BLU	WHT	GRN
C5 = 600V (3PH + G)	RED	BLK	BLU		GRN

LUG CONFIGURATIONS (PER POLE)

AMPS	OPTION LA	OPTION LB	OPTION CL (CUSTOM LUGS)
100A	(1) #6 AWG - 250MCM, (1) #2 GND	(1) #4 AWG - 600MCM, (1) #1/0 GND	
200A	(1) #6 AWG - 250MCM, (1) #2 GND	(1) #4 AWG - 600MCM, (1) #1/0 GND	
400A	(2) #6 AWG - 250MCM, (2) #2 GND	(1) #4 AWG - 600MCM, (1) #1/0 GND	CONSULT FACTORY
600A	(2) #4 AWG - 600MCM, (2) #1/0 GND	(2) 300 - 800 MCM, (2) #2/0 GND	
800A	(3) #4 AWG - 600MCM, (3) #1/0 GND	(2) 300 - 800 MCM, (2) #2/0 GND	
1200A	(4) #4 AWG - 600MCM, (4) #1/0 GND	(3) 300 - 800 MCM, (3) #2/0 GND	

**FOR CUSTOM LUG SIZES, SPECIFY WHEN PLACING ORDER

Max Ratings

- 400A
- 600VAC

Dimensions

- 42"H x 30"W x 16"D (100A - 400A)
- 60"H x 36"W x 24"D (600A - 1200A)

- 180LB
- 380LB