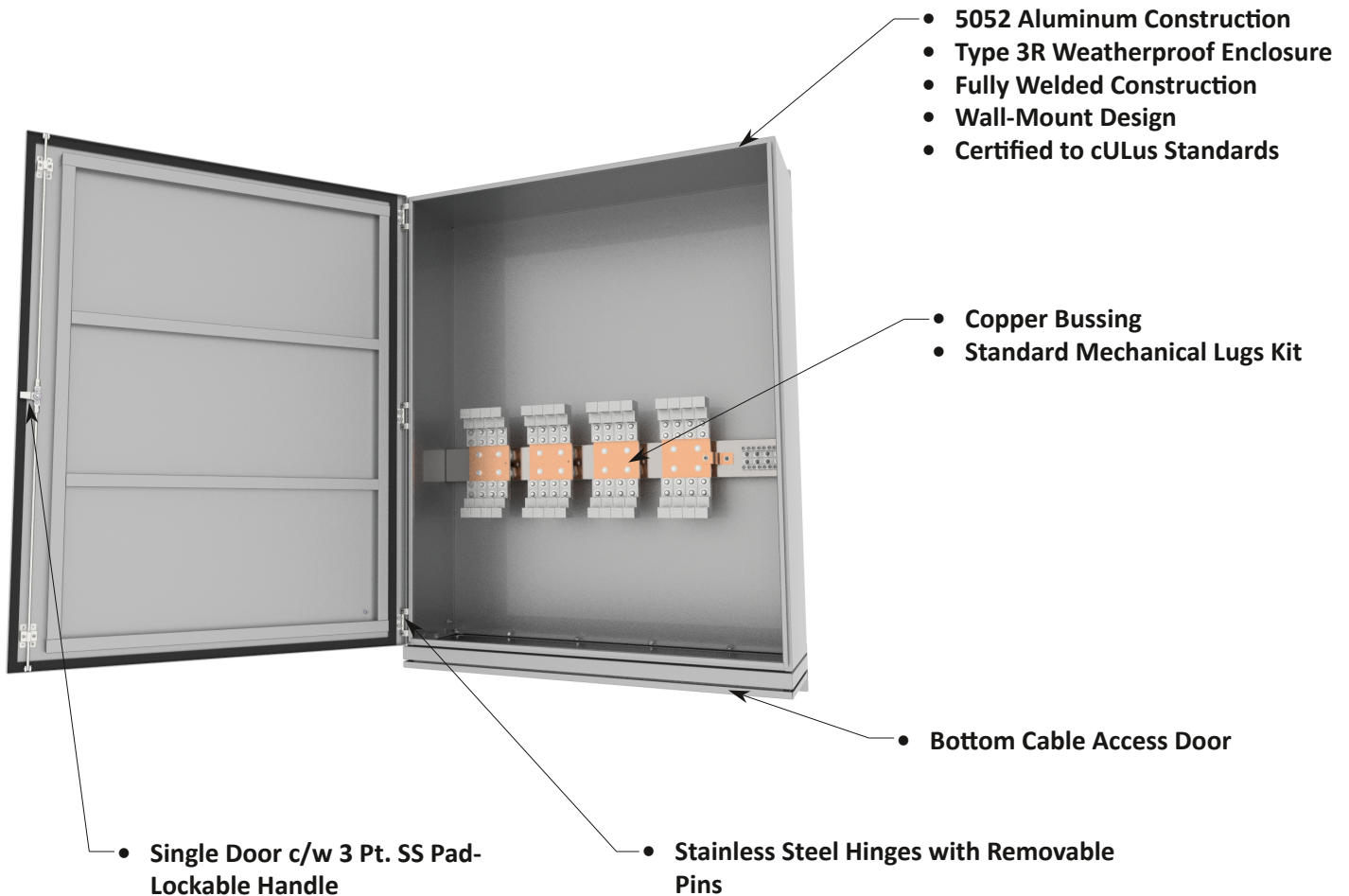


Connection Cabinets

FFCC-CLC Series



The FFCC-CLC Series Connection Cabinets offer quick connection to a mobile generator or load bank allowing temporary power to be received quickly and safely. They can be penetrated from the side or bottom to allow for facility wiring. These units are equipped with mechanical lugs allowing for easy connection. Assemblies are available up to 4000A mains and are certified to cULus standards.

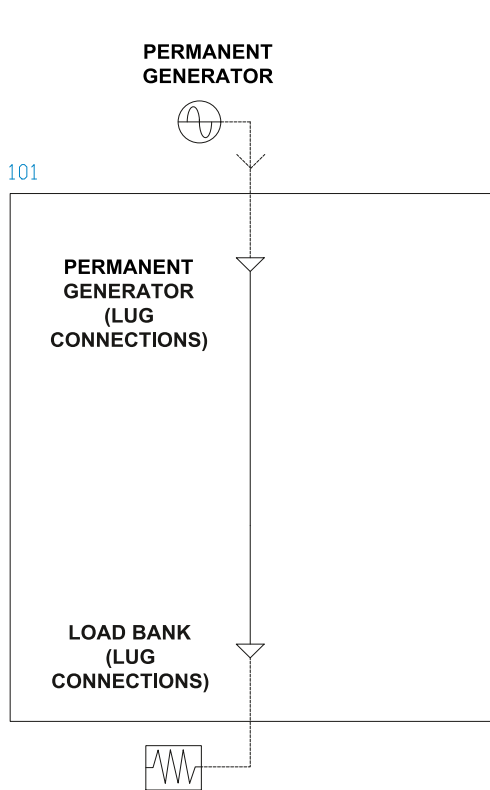


Connection Cabinets

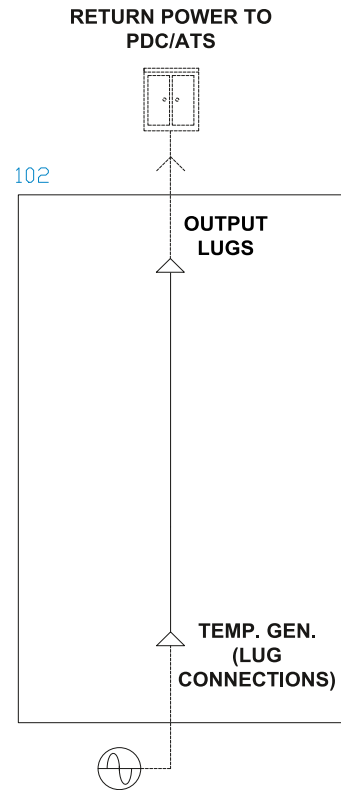
FFCC-CLC Series



One-Line Diagram



STANDARD LOAD BANK DOCKING STATION



STANDARD PORTABLE GENERATOR DOCKING STATION

Connection Cabinets

FFCC-CLC Series



Product Selector

FFCC - CLC - - - - - PART NO.

FFCC - CLC - 400 - V3 - ALU - LA - ACC EX.

AMPS
100
200
400
600
800
1200
1600
2000
2500
3000
4000

VOLTAGE
V1 = 120/240V (1PH + N + G)
V2 = 240V (3PH + G)
V3 = 208Y/120V (3PH + N + G)
V4 = 480Y/277V (3PH + N + G)
V5 = 480V (3PH + G)
V6 = 600Y/347V (3PH + N + G)
V7 = 600V (3PH + G)

ENCLOSURE CONSTRUCTION
ALU = 5052 ALUMINUM
304 = 304 STAINLESS STEEL
316 = 316 STAINLESS STEEL

ACCESSORIES (ACC)
AXX = 400A CAMLOCK CABLE SET (XX = FT)
AB = CUSTOM POWDER COAT COLOR
AC = HEATER C/W STAT
AF = TERMINAL STRIP
AI = MICRO-SWITCH
SER = SERVICE ENTRANCE ACCESS
LEG = LEG STAND SET
BE = BOTTOM ENTRY
BLANK = NONE
FOR MORE DETAILS CONTACT US

LUG CONFIGURATIONS (PER POLE)			
AMPS	OPTION LA	OPTION LB	OPTION CL (CUSTOM LUGS)
100A	(1) #6 AWG - 250MCM, (1) #2 GND	(1) #4 AWG - 600MCM, (1) #1/0 GND	
200A	(1) #6 AWG - 250MCM, (1) #2 GND	(1) #4 AWG - 600MCM, (1) #1/0 GND	
400A	(2) #6 AWG - 250MCM, (2) #2 GND	(1) #4 AWG - 600MCM, (1) #1/0 GND	
600A	(2) #4 AWG - 600MCM, (2) #1/0 GND	(2) 300 - 800 MCM, (2) #2/0 GND	
800A	(3) #4 AWG - 600MCM, (3) #1/0 GND	(2) 300 - 800 MCM, (2) #2/0 GND	
1200A	(4) #4 AWG - 600MCM, (4) #1/0 GND	(3) 300 - 800 MCM, (3) #2/0 GND	CONSULT FACTORY
1600A	(5) #4 AWG - 600MCM, (5) #1/0 GND	(4) 300 - 800 MCM, (4) #2/0 GND	
2000A	(6) #4 AWG - 600MCM, (6) #1/0 GND	(5) 300 - 800 MCM, (5) #2/0 GND	
2500A	(9) #4 AWG - 600MCM, (9) #1/0 GND	(8) 300 - 800 MCM, (8) #2/0 GND	
3000A	(9) #4 AWG - 600MCM, (9) #1/0 GND	(8) 300 - 800 MCM, (8) #2/0 GND	
3500A	(11) #4 AWG - 600MCM, (11) #1/0 GND	(10) 300 - 800 MCM, (10) #2/0 GND	
4000A	(12) #4 AWG - 600MCM, (12) #1/0 GND	(11) 300 - 800 MCM, (11) #2/0 GND	

**FOR CUSTOM LUG SIZES, SPECIFY WHEN PLACING ORDER

Max Ratings

- 4000A
- 600VAC

Dimensions & Est. Weights

- 36"H x 30"W x 16"D (800A and Below) 100lb
- 60"H x 36"W x 24"D (800A - 4000A) 265lbs

Bottom Entry
Consult factory for sizing