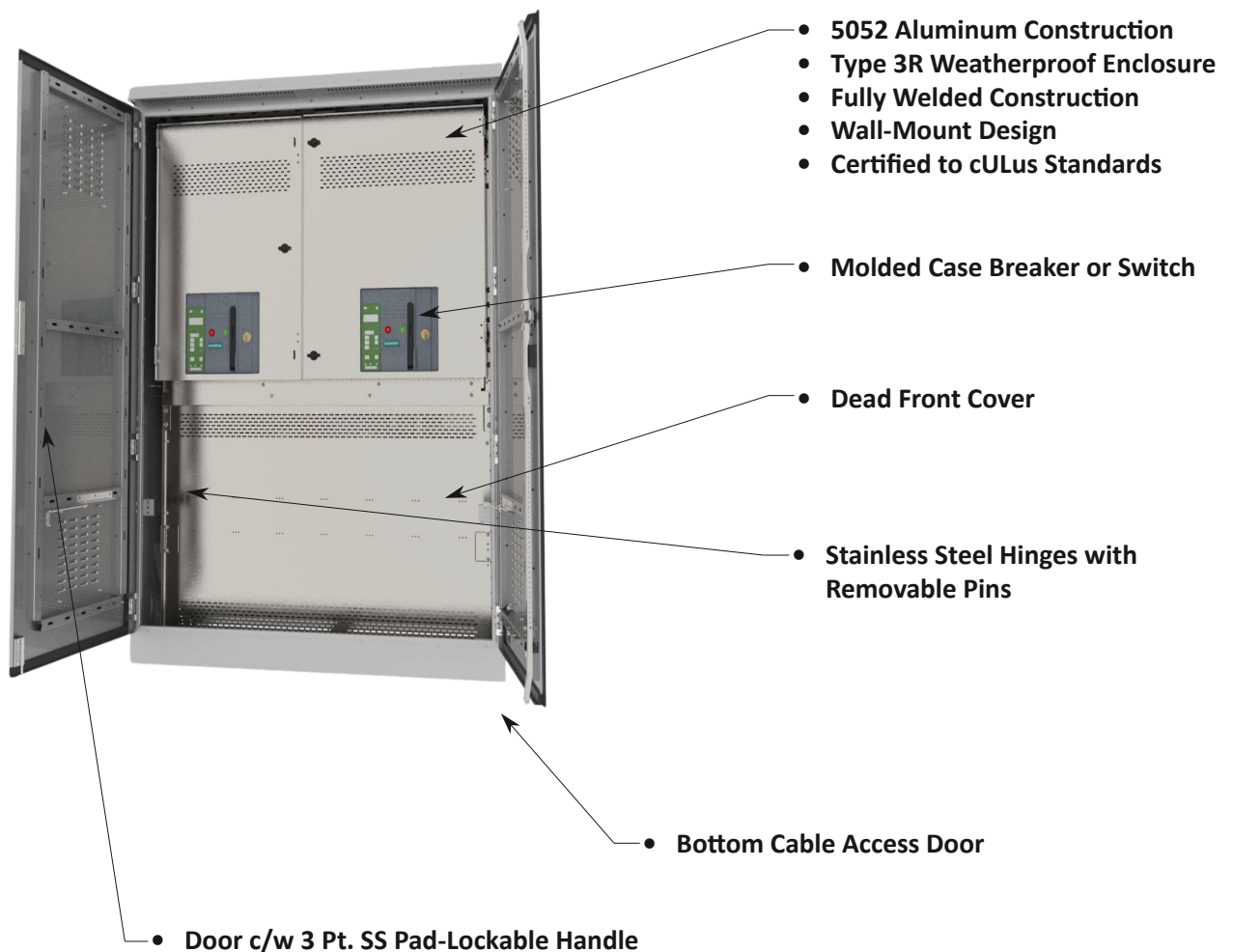


The FFTS-M2CB Series is a breaker based manual transfer switch. These units are equipped with two molded case circuit breakers and are available with optional indicating lights, providing a quick visual status on normal/emergency supply selection. Additionally, these units are equipped with mechanical lugs, allowing for easy connection. Assemblies are available with up to 4000A mains and are certified to cULus standards.

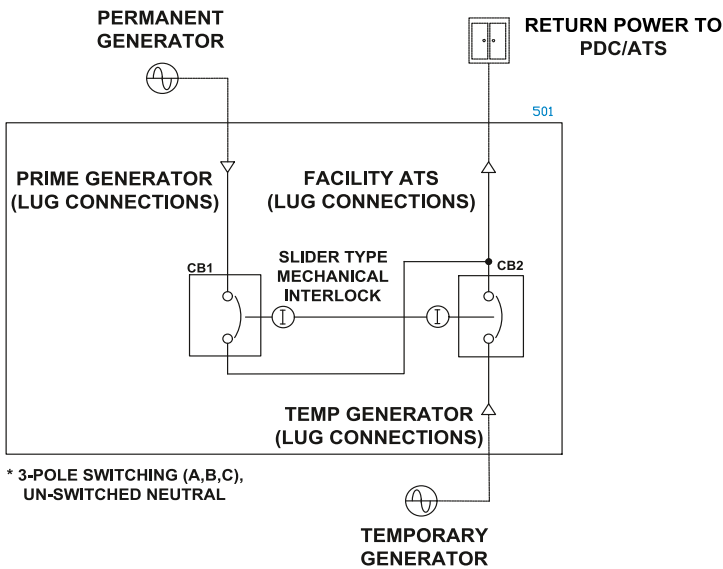


# Connection Cabinets

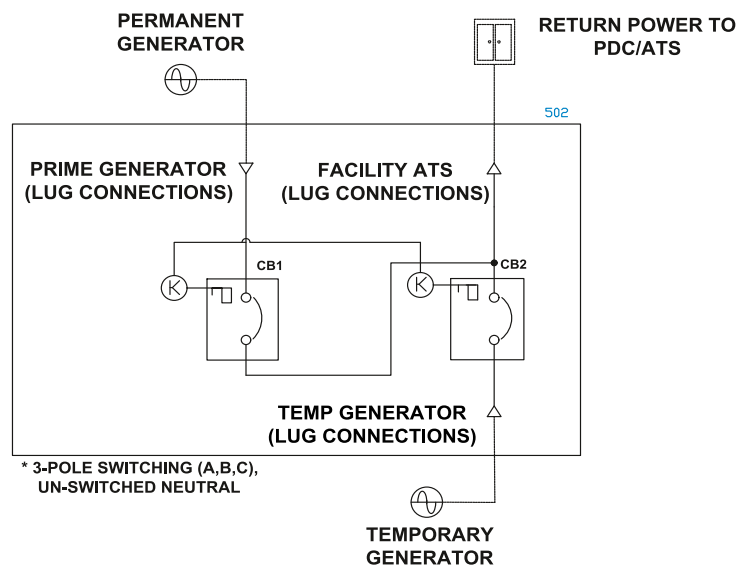
## FFTS-M2CB Series



### One-Line Diagram



**DUAL BREAKER DOCKING STATION - TEMPORARY GENERATOR CONNECTION WITH SLIDER TYPE INTERLOCKED CIRCUIT BREAKERS. CONFIG 1**



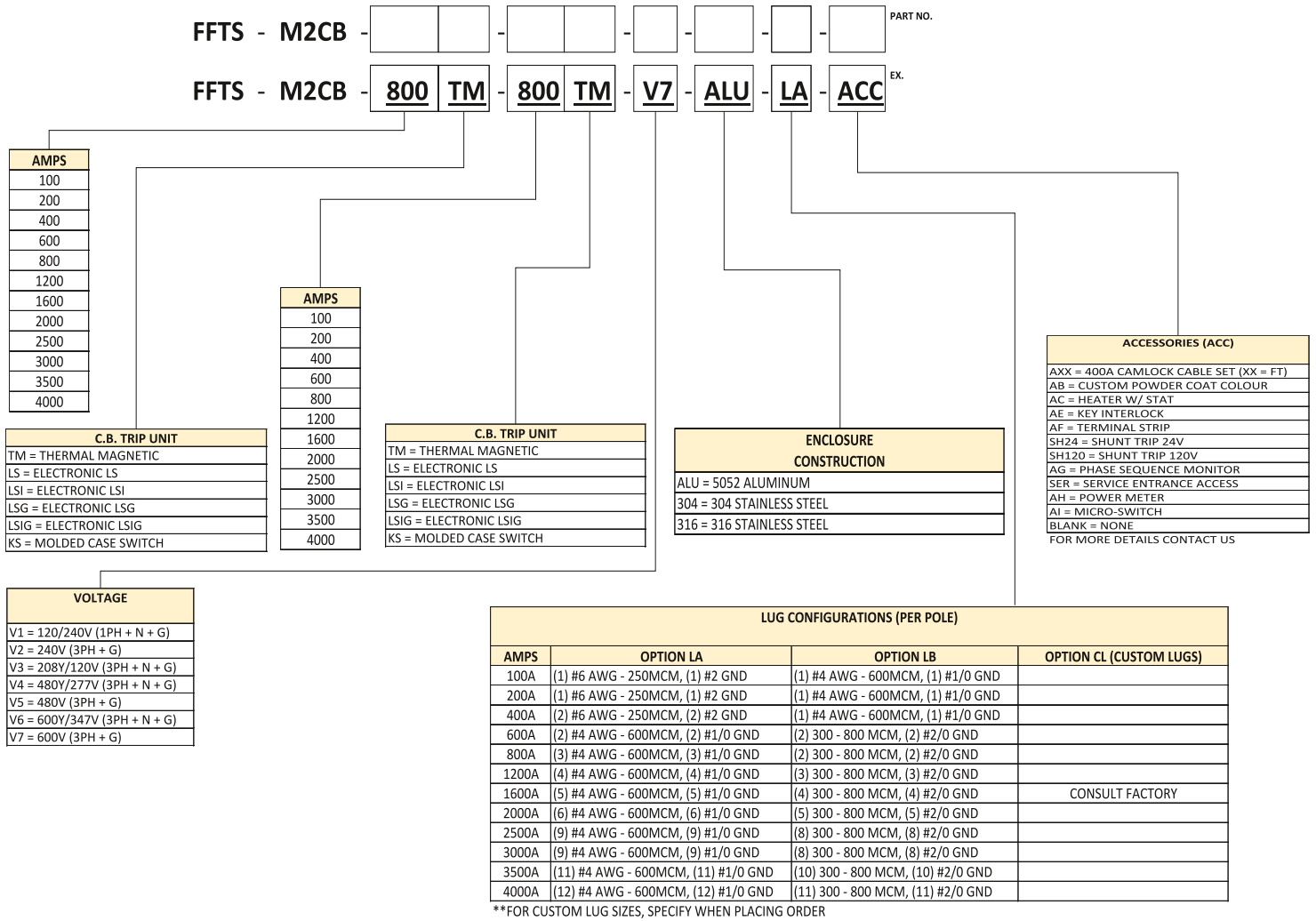
**DUAL BREAKER DOCKING STATION - TEMPORARY GENERATOR CONNECTION WITH KIRK KEY INTERLOCKED CIRCUIT BREAKERS. CONFIG 2**

# Connection Cabinets

## FFTS-M2CB Series



### Product Selector



### Max Ratings

- 4000A
- 600VAC

### Dimensions & Est. Weights

Consult factory for sizing