

NO	SIZE	DESCRIPTION
1C		CARGO TANK VALVE
2C		LOAD VALVE
3C		MASTER SUCTION VALVE
4C		DISCHARGE VALVE
5C		HEADER VALVE
6C		SALVAGE VALVE
8C		RELIEF VALVE
9C		CHECK VALVE
12C		BURP VALVE RETURN TO CARGO TANK
15C		BYPASS VALVE (AROUND CHECK VALVE)

NO	SIZE	DESCRIPTION
16C		DISCHARGE PRESSURE GAUGE
19C		CARGO HEADER
30C		CARGO PIPELINE
	—	ABOVE DECK PIPING
	- - -	BELOW DECK PIPING

BARGE INFORMATION

HULL:	97-2104
NAME:	CBC 20
OFF.#	1057377
YR BUILT	1998

BUILDER: JEFFBOAT

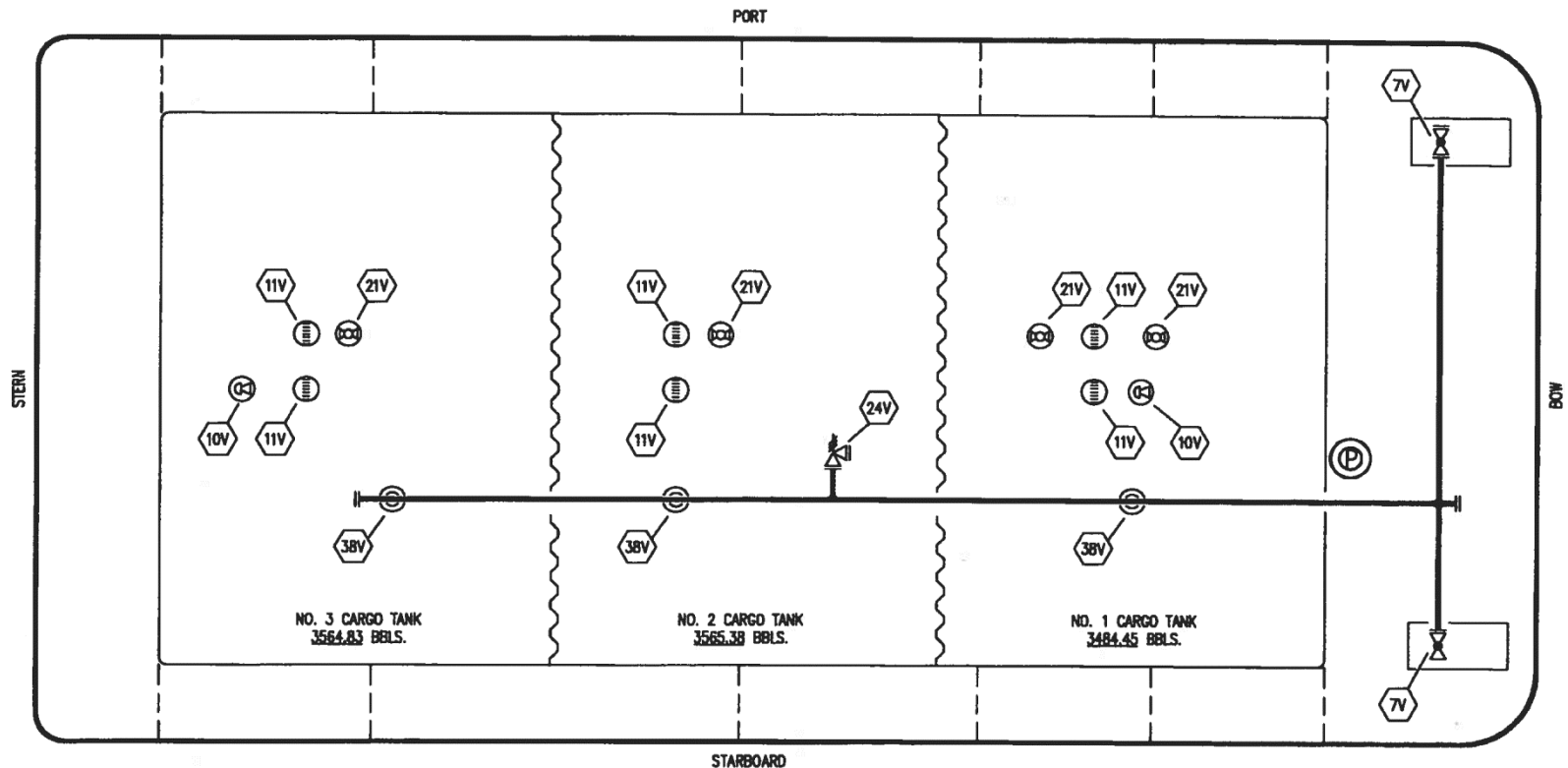
CANAL BARGE COMPANY, INC.



195'-0" X 35'-0" X 12'-0" DOUBLE SKIN TANK BARGE

CARGO PIPING DIAGRAM

DATE: 04/04/13



NO	SIZE	DESCRIPTION
7V		HEADER VALVE
10V		HIGH LEVEL/OVERFILL ALARM
11V		GAUGE STICK
21V		HERMETIC GAUGE
24V		PRESSURE RELIEF VALVE
38V		VAPOR DROP
————		ABOVE DECK PIPING
----		BELOW DECK PIPING

BARGE INFORMATION

HULL:	97-2104
NAME:	CBC 20
OFF.#	1057377
YR BUILT	1998

BUILDER: JEFFBOAT

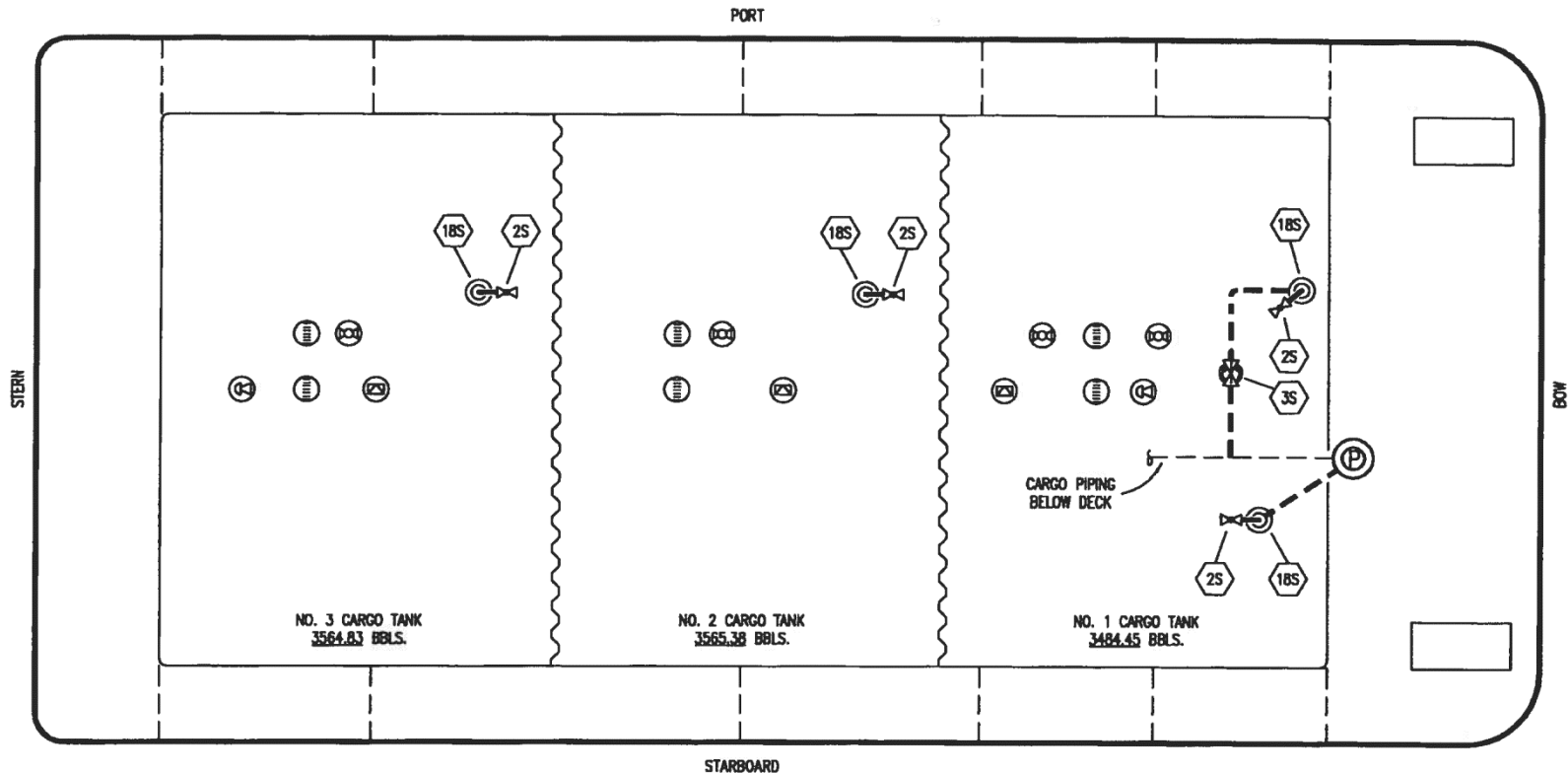
CANAL BARGE COMPANY, INC.



195'-0" X 35'-0" X 12'-0" DOUBLE SKIN TANK BARGE

VAPOR PIPING DIAGRAM

DATE: 04/04/13



NO SIZE DESCRIPTION

- 2S VALVE CARGO TANK
- 3S VALVE MAIN CARGO PIPING
- 18S STRIPPING DROP

— ABOVE DECK PIPING

- - - BELOW DECK PIPING

BARGE INFORMATION

HULL:	97-2104
NAME:	CBC 20
OFF.#	1057377
YR BUILT	1998

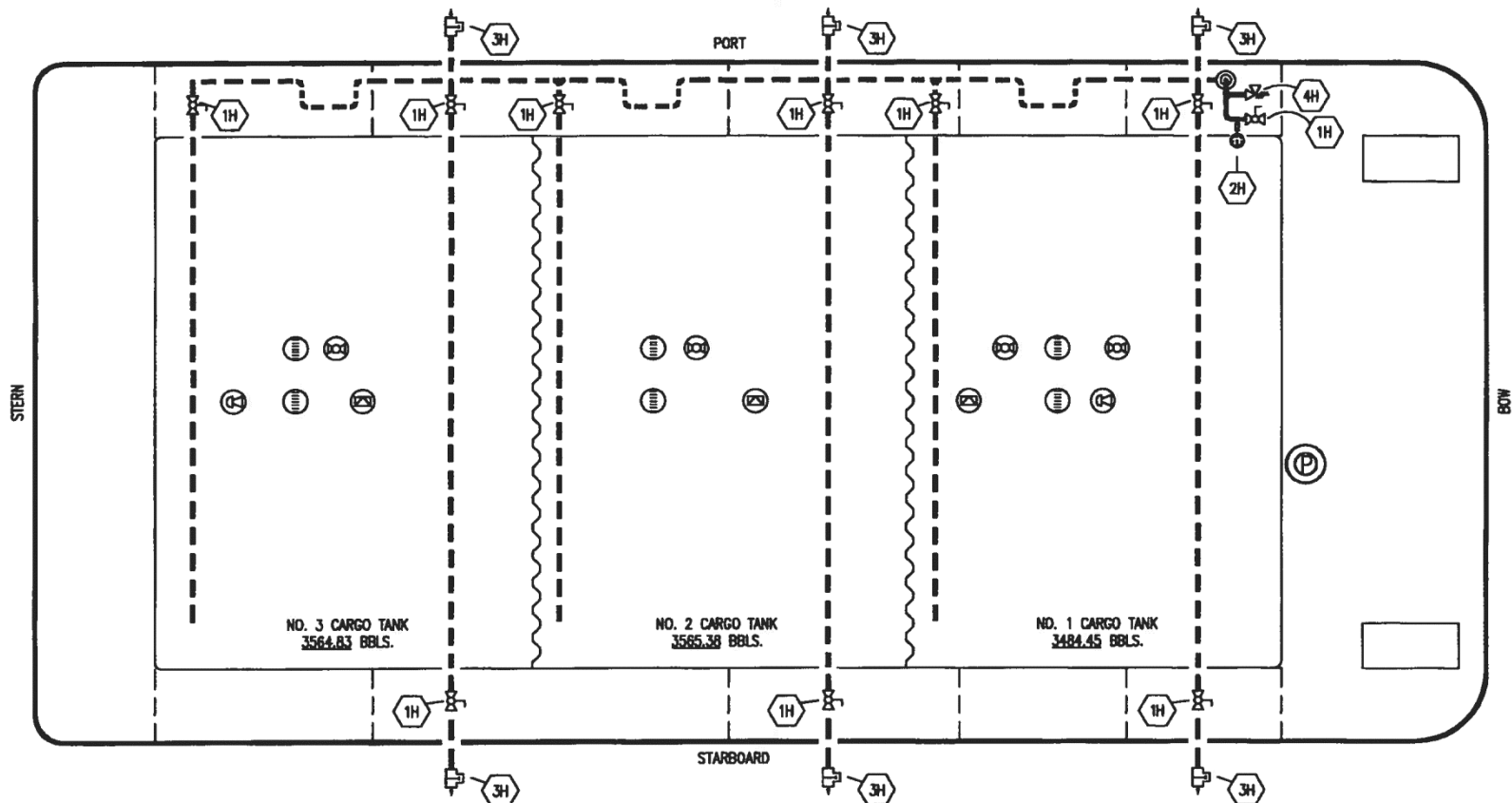
BUILDER: JEFFBOAT

CANAL BARGE COMPANY, INC.



195'-0" X 35'-0" X 12'-0" DOUBLE SKIN TANK BARGE
STRIPPING PIPING FLOW DIAGRAM

DATE: 04/04/13



NO	SIZE	DESCRIPTION
1H		GLOBE VALVE
2H		PRESSURE GAUGE
3H		IMPULSE STEAM TRAP
4H		RELIEF VALVE

— ABOVE DECK PIPING
 - - - BELOW DECK PIPING

BARGE INFORMATION

HULL:	97-2104
NAME:	CBC 20
OFF.#	1057377
YR BUILT	1998

BUILDER: JEFFBOAT

CANAL BARGE COMPANY, INC.



195'-0" X 35'-0" X 12'-0" DOUBLE SKIN TANK BARGE
 HEATING PIPING FLOW DIAGRAM

DATE: 04/04/13