

**CARGO LOADING:**

- A OPEN VALVES NO.:5,6,7,8,9,10,11 & 12
- B CLOSE VALVES NO.:1,2
- C VENT TANKS

**CARGO DISCHARGE:**

- A OPEN VALVES NO.:1,2,6,7,8,9,10,11, & 12
- B CLOSE VALVES NO.: 5
- C VENT TANKS

**CARGO SYSTEM VALVES**

- 1 PUMP SUCTION VALVE
- 2 PUMP DISCHARGE VALVE
- 3 PUMP DISCHARGE CHECK VALVE
- 4 PRESSURE RELIEF VALVE
- 5 CARGO FILL VALVE
- 6 PORT & STBD HEADER VALVES
- 7 TK 1 FILL / SUCTION VALVE
- 8 TK 2 FILL / SUCTION VALVE
- 9 TK 3 FILL / SUCTION VALVE
- 10 TK 1 FILL / SUCTION VALVE
- 11 TK 2 FILL / SUCTION VALVE
- 12 TK 3 FILL / SUCTION VALVE
- 13 #1 STRIPPING VALVE
- 14 #2 STRIPPING VALVE
- 15 #3 STRIPPING VALVE
- 16 DEEPWELL CAN STRIPPING VALVE

**TANK VOL. 100% FULL**

TANK	GAL.	BBL.	CU. FT.
1	151506	3607.28	20253.41
2	190912	4545.52	25521.22
3	170306	4054.90	22766.60
<b>TOTAL</b>	<b>512724</b>	<b>12207.70</b>	<b>68541.23</b>
		<b>98% FULL</b>	
		<b>11963.55</b>	

MAX CAPACITY - BBL (100%)			
12207.70	3607.28	4545.52	4054.90
TOTAL	CT1	CT2	CT3

MAX CAPACITY - CU. FT. (100%)			
68541.23	20253.41	25521.22	22766.60
TOTAL	CT1	CT2	CT3

**PLAN**

CAPACITIES—SHORT TONS AT VARIOUS DRAFTS				
TANK NUMBER				
DRAFT (FT)	TOTAL (S.T.)	1 (S.T.)	2 (S.T.)	3 (S.T.)
6.00	924.60	282.00	328.90	313.70
6.25	979.20	299.00	348.70	331.50
6.50	1033.90	316.00	368.40	349.50
6.75	1088.50	333.00	388.20	367.30
7.00	1143.10	350.00	408.00	385.10
7.25	1197.70	367.10	427.80	402.80
7.50	1252.30	384.10	447.70	420.70
7.75	1307.00	401.10	467.40	438.50
8.00	1361.60	418.10	487.20	456.30
8.25	1416.20	435.10	507.00	474.10
8.50	1470.80	452.20	526.80	491.80
8.75	1525.50	469.20	546.60	509.70
9.00	1580.10	486.20	566.40	527.50
9.25	1634.70	503.20	586.10	545.40
9.4167	1671.00	514.50	599.30	557.20
9.50	1689.17	520.20	605.90	563.07
9.75	1744.00	537.30	625.70	581.00
10.00	1798.60	554.30	645.50	598.80
10.25	1853.20	571.30	665.30	616.60
10.50	1907.80	588.30	685.10	634.40

**SPECIAL FEATURES**

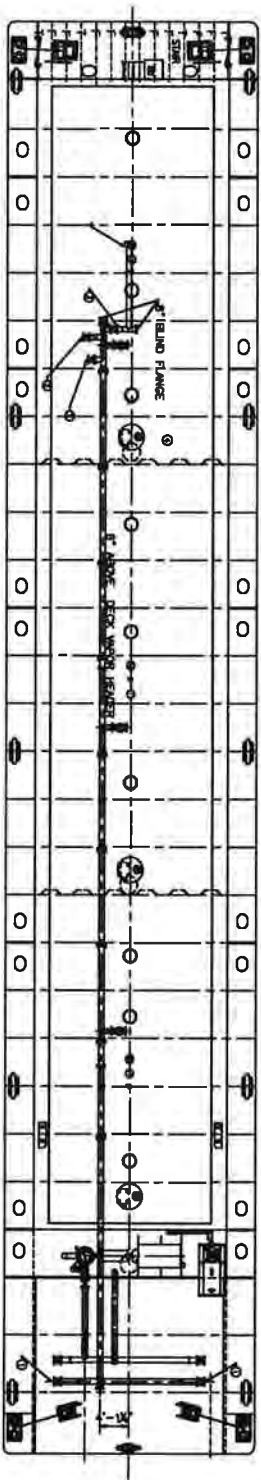
- 1. CARGO PUMP: BYRON JACKSON MODEL 11LS14GH-3 AMARILLO GEAR S300 2100 GPM, 253' TDH @ 192 H.P.
- 2. CARGO PUMP ENGINE: MECO/FPT DIESEL MODEL PU-1173

**BARGE INFORMATION**

YEAR BUILT: 2018  
 HULL TYPE: I  
 CARGO GRADE: A & LOWER PRODUCTS PER SUBCHAPTER "D" AND LIMITED SUBCHAPTER "O" PRODUCTS. WHEN IN TOW WITH A RAKE BARGE

CANAL BARGE COMPANY	
NAME	HULL #
CBC 1400	9780
CBC 1401	9781
CBC 1402	9782
CBC 1403	9783
CBC 1404	9784
CBC 1405	9785
CBC 1408	9786
CBC 1407	9787
CBC 1408	9788
CBC 1409	9789

REV	DATE	DESCRIPTION	DATE BY
REVISIONS			
MARINE SOLUTIONS, INC.			
<small>           MARINE SOLUTIONS, INC.            2007-01" x 35'-0" x 17'-6" DOUBLE SKIN TANK BARGE            CARGO PIPING DIAGRAM            (SOUTHWEST SHIPYARD)         </small>			
SCALE: 3/8" = 1'-0"	DATE: 04/21/17	DWG NO.:	
DRAWN BY: MS	CHK BY:	APP. BY:	14020414-1
SHEET NO.:	CONTRACT NO.:	SHEET 1 OF 1	
		REV. 0	



**VAPOR SYSTEM VALVES:**

- 1- 8" HEADER VALVES
- 2- 6" BERGAN PV VALVE SET
- 3- 1.5# PSI/ 0.5# VACUUM ISOLATION VALVE
- 4- VENT STACK

DATE	BY	REV	DESCRIPTION
01/11/11	AW	1	ISSUED FOR PERMITTING
01/11/11	AW	2	REVISED VENT STACK
01/11/11	AW	3	REVISED VENT STACK
01/11/11	AW	4	REVISED VENT STACK
01/11/11	AW	5	REVISED VENT STACK
01/11/11	AW	6	REVISED VENT STACK
01/11/11	AW	7	REVISED VENT STACK
01/11/11	AW	8	REVISED VENT STACK
01/11/11	AW	9	REVISED VENT STACK
01/11/11	AW	10	REVISED VENT STACK
01/11/11	AW	11	REVISED VENT STACK
01/11/11	AW	12	REVISED VENT STACK
01/11/11	AW	13	REVISED VENT STACK
01/11/11	AW	14	REVISED VENT STACK
01/11/11	AW	15	REVISED VENT STACK
01/11/11	AW	16	REVISED VENT STACK
01/11/11	AW	17	REVISED VENT STACK
01/11/11	AW	18	REVISED VENT STACK
01/11/11	AW	19	REVISED VENT STACK
01/11/11	AW	20	REVISED VENT STACK
01/11/11	AW	21	REVISED VENT STACK
01/11/11	AW	22	REVISED VENT STACK
01/11/11	AW	23	REVISED VENT STACK
01/11/11	AW	24	REVISED VENT STACK
01/11/11	AW	25	REVISED VENT STACK
01/11/11	AW	26	REVISED VENT STACK
01/11/11	AW	27	REVISED VENT STACK
01/11/11	AW	28	REVISED VENT STACK
01/11/11	AW	29	REVISED VENT STACK
01/11/11	AW	30	REVISED VENT STACK
01/11/11	AW	31	REVISED VENT STACK
01/11/11	AW	32	REVISED VENT STACK
01/11/11	AW	33	REVISED VENT STACK
01/11/11	AW	34	REVISED VENT STACK
01/11/11	AW	35	REVISED VENT STACK
01/11/11	AW	36	REVISED VENT STACK
01/11/11	AW	37	REVISED VENT STACK
01/11/11	AW	38	REVISED VENT STACK
01/11/11	AW	39	REVISED VENT STACK
01/11/11	AW	40	REVISED VENT STACK
01/11/11	AW	41	REVISED VENT STACK
01/11/11	AW	42	REVISED VENT STACK
01/11/11	AW	43	REVISED VENT STACK
01/11/11	AW	44	REVISED VENT STACK
01/11/11	AW	45	REVISED VENT STACK
01/11/11	AW	46	REVISED VENT STACK
01/11/11	AW	47	REVISED VENT STACK
01/11/11	AW	48	REVISED VENT STACK
01/11/11	AW	49	REVISED VENT STACK
01/11/11	AW	50	REVISED VENT STACK
01/11/11	AW	51	REVISED VENT STACK
01/11/11	AW	52	REVISED VENT STACK
01/11/11	AW	53	REVISED VENT STACK
01/11/11	AW	54	REVISED VENT STACK
01/11/11	AW	55	REVISED VENT STACK
01/11/11	AW	56	REVISED VENT STACK
01/11/11	AW	57	REVISED VENT STACK
01/11/11	AW	58	REVISED VENT STACK
01/11/11	AW	59	REVISED VENT STACK
01/11/11	AW	60	REVISED VENT STACK
01/11/11	AW	61	REVISED VENT STACK
01/11/11	AW	62	REVISED VENT STACK
01/11/11	AW	63	REVISED VENT STACK
01/11/11	AW	64	REVISED VENT STACK
01/11/11	AW	65	REVISED VENT STACK
01/11/11	AW	66	REVISED VENT STACK
01/11/11	AW	67	REVISED VENT STACK
01/11/11	AW	68	REVISED VENT STACK
01/11/11	AW	69	REVISED VENT STACK
01/11/11	AW	70	REVISED VENT STACK
01/11/11	AW	71	REVISED VENT STACK
01/11/11	AW	72	REVISED VENT STACK
01/11/11	AW	73	REVISED VENT STACK
01/11/11	AW	74	REVISED VENT STACK
01/11/11	AW	75	REVISED VENT STACK
01/11/11	AW	76	REVISED VENT STACK
01/11/11	AW	77	REVISED VENT STACK
01/11/11	AW	78	REVISED VENT STACK
01/11/11	AW	79	REVISED VENT STACK
01/11/11	AW	80	REVISED VENT STACK
01/11/11	AW	81	REVISED VENT STACK
01/11/11	AW	82	REVISED VENT STACK
01/11/11	AW	83	REVISED VENT STACK
01/11/11	AW	84	REVISED VENT STACK
01/11/11	AW	85	REVISED VENT STACK
01/11/11	AW	86	REVISED VENT STACK
01/11/11	AW	87	REVISED VENT STACK
01/11/11	AW	88	REVISED VENT STACK
01/11/11	AW	89	REVISED VENT STACK
01/11/11	AW	90	REVISED VENT STACK
01/11/11	AW	91	REVISED VENT STACK
01/11/11	AW	92	REVISED VENT STACK
01/11/11	AW	93	REVISED VENT STACK
01/11/11	AW	94	REVISED VENT STACK
01/11/11	AW	95	REVISED VENT STACK
01/11/11	AW	96	REVISED VENT STACK
01/11/11	AW	97	REVISED VENT STACK
01/11/11	AW	98	REVISED VENT STACK
01/11/11	AW	99	REVISED VENT STACK
01/11/11	AW	100	REVISED VENT STACK

**PLAN**

MARINE SOLUTIONS, INC.		DATE	NO.	REV.
MARINE SOLUTIONS, INC.		DATE	NO.	REV.
CANAL BARGE COMPANY		DATE	NO.	REV.
2007-CANAL-COASTAL-DOCK-SHIP-TANK-ENGINE		DATE	NO.	REV.
VAPOR PIPING		DATE	NO.	REV.
(SOUTHWEST SHIPPING, L.P.)		DATE	NO.	REV.
DRAWING NO.		DATE	NO.	REV.
SHEET NO.		DATE	NO.	REV.
TOTAL SHEETS		DATE	NO.	REV.