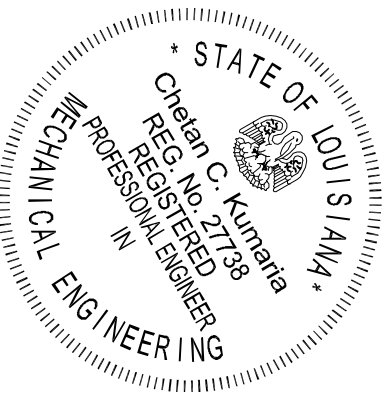
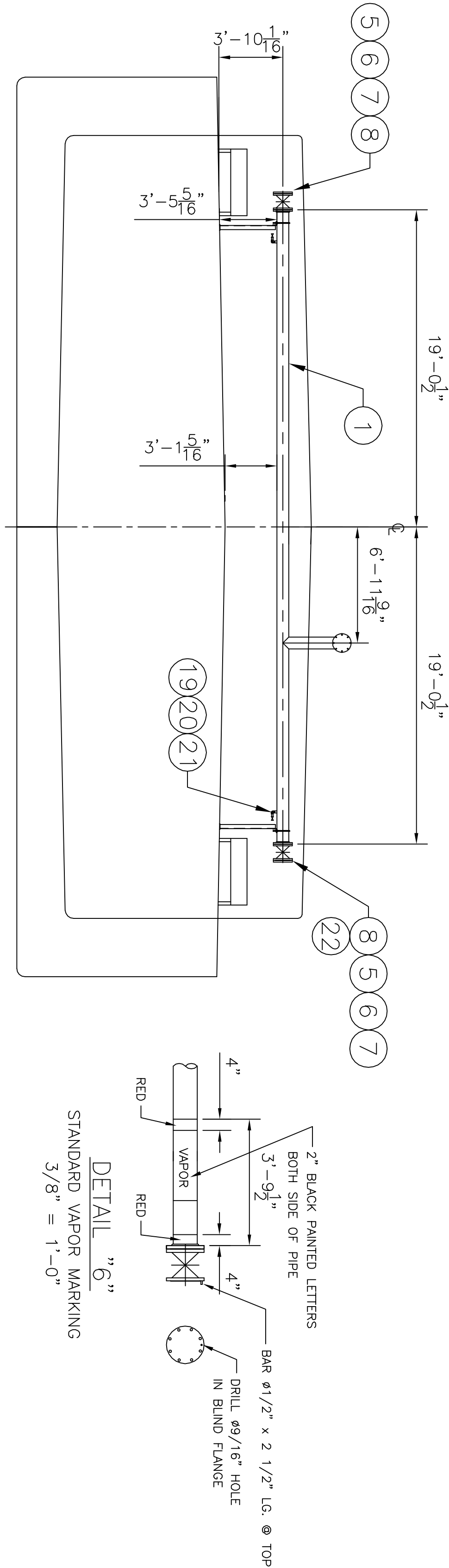


BERGAN PV VALVE

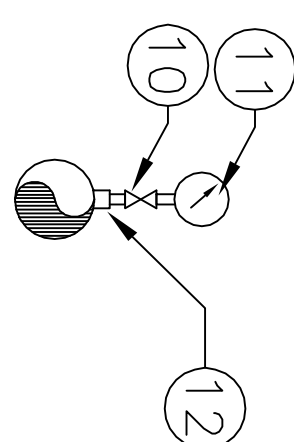
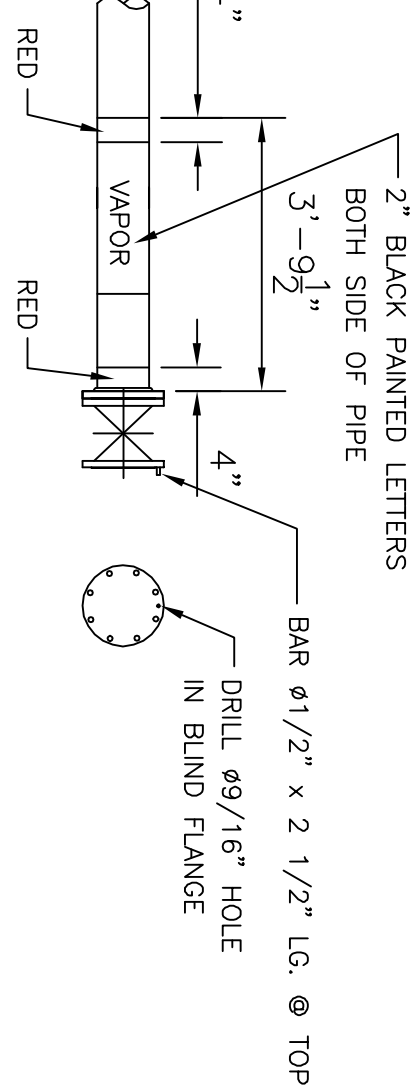
DECK PLAN



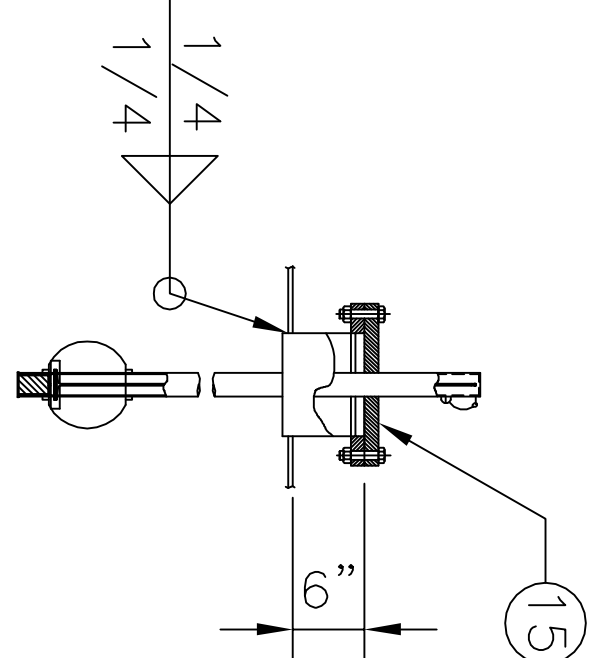
SIGNED ON: 04/11/2012
EXPIRY DATE: 08/30/2012



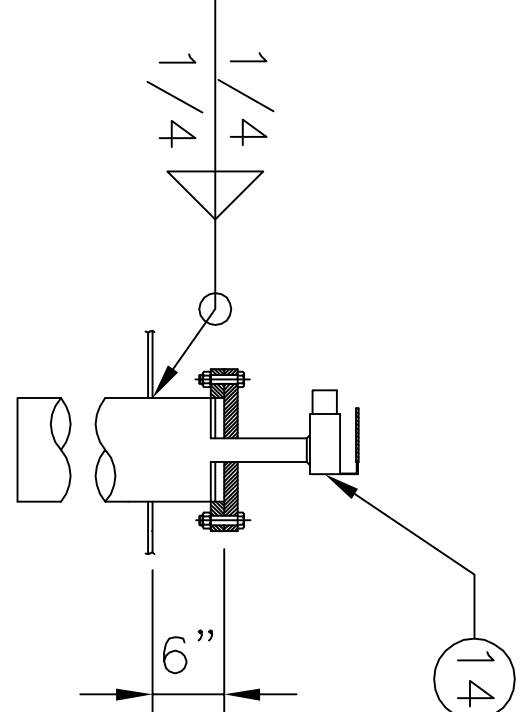
DETAIL "6"
STANDARD VAPOR MARKING
3/8" = 1'-0"



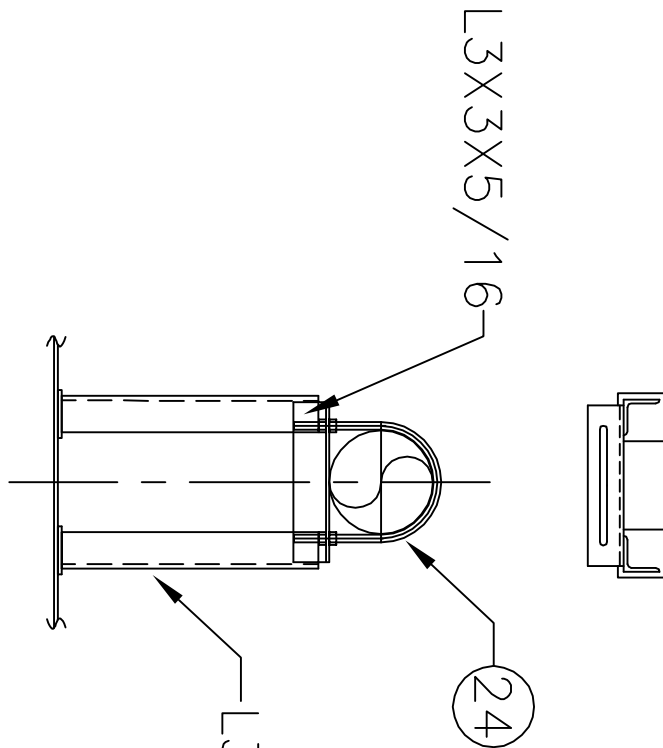
DETAIL "7"
PUMP DISCHARGE PRESSURE GAUGE
NTS



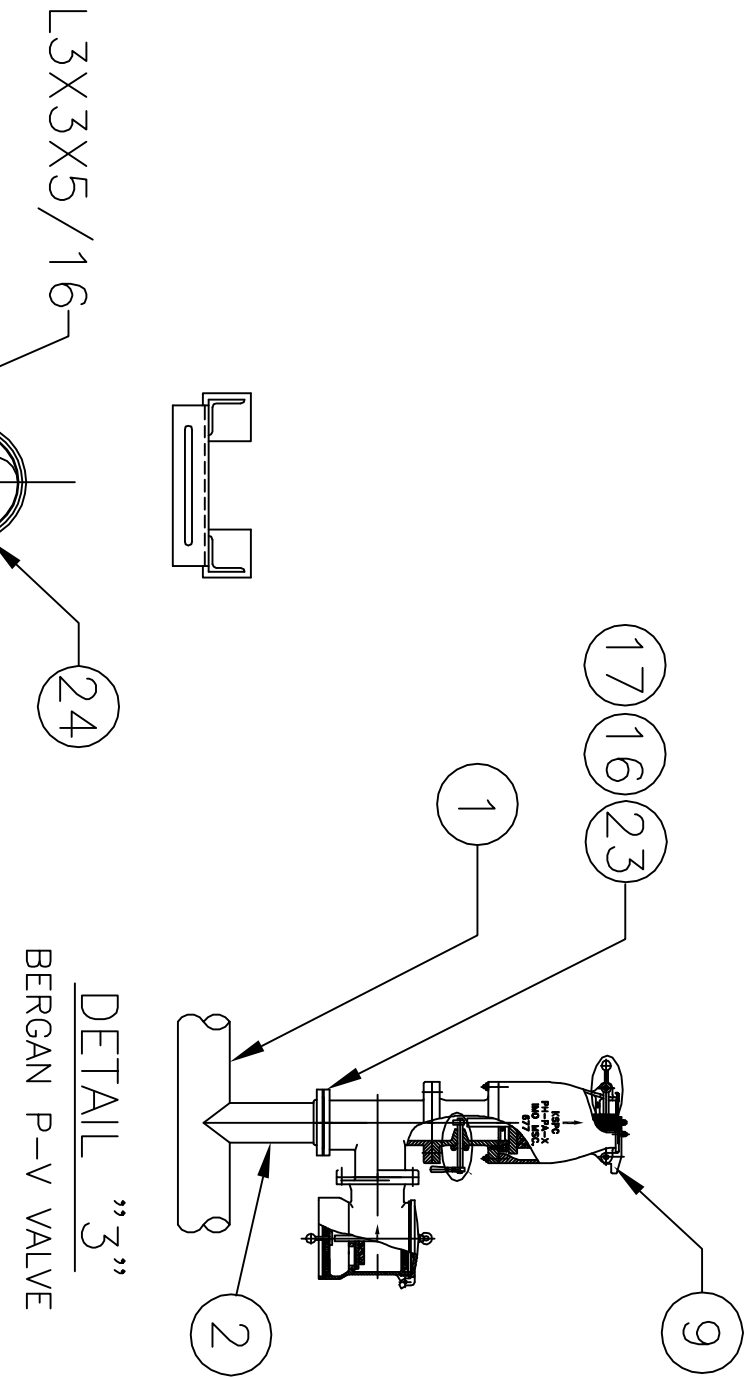
DETAIL "1"
BERGAN FULL DEPTH LIQUID GAUGE
3/4" = 1'-0"



DETAIL "2"
BERGAN HIGH LEVEL/ALARM
SHUTDOWN



DETAIL "8"
8" PIPE SUPPORT



MARK	QTY	DESCRIPTION	ASTM NO.	ANSI NO.
1	283	8" PIPE, SCH. 40, ERW, BLK. STEEL	A-53	B36.10
2	4'	6" PIPE, SCH. 20, ERW, BLK. STL.	A-53	B36.10
3	10'	8" PIPE, SCH. 10, 304 SS.	A-312	B36.10
5	5	8" BLIND FLANGE, 150#, R.F., F.S.	A-105	B16.5
6	19	RING GASKET, 1/8" THK., NON-ASBESTOSS, 150# 8" FLG., KLINGERSL OR EQ.		
7	152	BOLTS, 3/4" x 3 1/2" LG. FOR 8" FLG.	A-307	B18.2.1
8	3	GATE VALVE, 8", 150#, C.S. BODY/CR13 TRIM, SPACE#15011C OR EQ	A-216	B16.5
9	1	PV VALVE, 6", BERGAN KLPH-6, SET @ 1.0 PSI PRESS & 0.5 PSI VACUUM	A-216	B16.5
10	1	VALVE, GLOBE, 1/2", SCRD., FORGED STEEL BODY/CR13 TRIM, VOGT TPE 600 #10103	A-105	B16.11
11	1	PRESSURE VACUUM GAUGE, 4 PSI VAC. TO 4 PSI PRESS, ASHCROFT OR EQ		
12	1	COUPLING, 1/2", 3000#, SCRD	A-105	B16.11
13	1	ELBOW, 45°, 8", SCH. 40, L.R., B.W., STEEL	A-234	B16.9
14	6	HIGH LEVEL ALARM/SHUT DOWN SYSTEM, BERGAN GUARD LEVEL 07324WIN-2A		
15	6	HIGH LEVEL INDICATING DEVISE, BERGAN GUARD LEVEL 07324VDS		
16	1	RING GASKET, 1/8" THK., NON-ASBESTOSS, 150# 6" FLG., KLINGERSL OR EQ.		
17	8	BOLTS, 3/4" x 3 1/4" LG. FOR 6" FLG.	A-307	B18.2.1
18	1	ELBOW, 90°, 8", SCH. 40, B.W.	A-234	B16.9
19	2	VALVE, GATE, 3/4", SCRD., FORGED STEEL BODY/CR13 TRIM, FARBANK FIG#0418	A-105	B16.11
20	2	ELBOW, 90°, 3/4", 3000#, SCRD, F.S.	A-105	B16.11
21	2	HALF COUPLING, 3/4", 3000#, SCRD.	A-105	B16.11
22	24	8" FLANGE, 150#, SLIP ON, R.F., F.S.	A-105	B16.5
23	1	6" FLANGE, SLIP-ON, 150#, R.F., F.S.	A-105	B16.5
24	AS REQD	U-BOLT FOR 8" PIPE	A-307	B18.2.1
25	10'	4" PIPE, SCH. 40, ERW, BLK. STEEL	A-53	B36.10
26	6	4" BLIND FLANGE, 150#, R.F., F.S.	A-105	B16.5
27	6	4" FLANGE, 150#, SLIP ON, R.F., F.S.	A-105	B16.5
28	6	RING GASKET, 1/8" THK., NON-ASBESTOSS, 150# 4" FLG., KLINGERSL OR EQ.		
29	48	BOLTS, 5/8" x 3" LG. FOR 4" FLG.	A-307	B18.2.1
30	1	LAP JOINT, 8" SCH. 10, WELDED, 304SS	A-312	B36.10
31	1	STUB FOR 8" LAP JOINT, SCH. 10, WELDED, 304SS	A-312	B36.10
32	1	ELBOW, 90°, 8", SCH. 10, B.W., 304SS	A-182	B16.9

GENERAL NOTES

- BERGE IS CBC 336, O.N. D111919685.
- ALL PIPING TO MEET USCG 11 REGULATIONS.
- BACKING RINGS SHALL BE USED AT BUTT WELD JOINTS 2" AND LARGER
- PIPES PASSING THROUGH WATER/OIL TIGHT BOUNDARIES TO BE WELDED BOTH SIDES.
- VAPOR SYSTEM:
DESIGN 1.0 PSI
TEST 2.0 PSI
RELIEF VALVE 1.0 PSI
- LABELS TO BE INSTALLED ON ALL VALVES WHERE REQUIRED TO IDENTIFY SERVICE.
- ENDS OF VAPOR MANIFOLD SHOULD BE PAINTED AS SHOWN IN DETAIL "6" IN ACCORDANCE WITH CFR 46 PART 39.20-D-(d).
- THE VAPOR PIPING MUST BE ELECTRICALLY CONTINUOUS AND BONDED TO HULL.

REV	ITEM	DESCRIPTION	DATE	BY

REVISIONS

MARINE SOLUTIONS, INC.
UNLESS THESE DRAWINGS AND SPECIFICATIONS OR A CONFIDENTIAL NOTE WITH AN EXPRESSED UNDERSTANDING THAT THE DRAWING IS NOT TO BE USED FOR ANY OTHER PURPOSE, THE RECIPIENT HEREBY AGREES NOT TO DISCLOSE THESE CONFIDENTIAL DRAWINGS OR ANY OTHER PORTION THEREOF TO ANY OTHER PARTY EXCEPT FOR THOSE SPECIFIC PURPOSES FOR WHICH THIS DRAWING WAS ISSUED.

MARINE SOLUTIONS, INC.
7985 BOONE TRACE
NASHVILLE, TN 37221
TEL: 615-564-0906 FAX: 615-562-0665 EMAIL: MARINESOL@MARINE.COM

CANAL BARGE COMPANY, INC.

297'-6" x 54'-0" x 12'-0" DOUBLE SKIN TANK BARGE
VAPOR PIPING ADDITION

SCALE: 3/32"=1'-0"	DATE: 03/16/12	DWG NO.:
DRAWN BY: MSJ	CHK'D BY:	031202RP-1
	APPR. BY:	SHT 1 OF 1
HULL NO. 0	CONTRACT NO. 0	REV. 0